

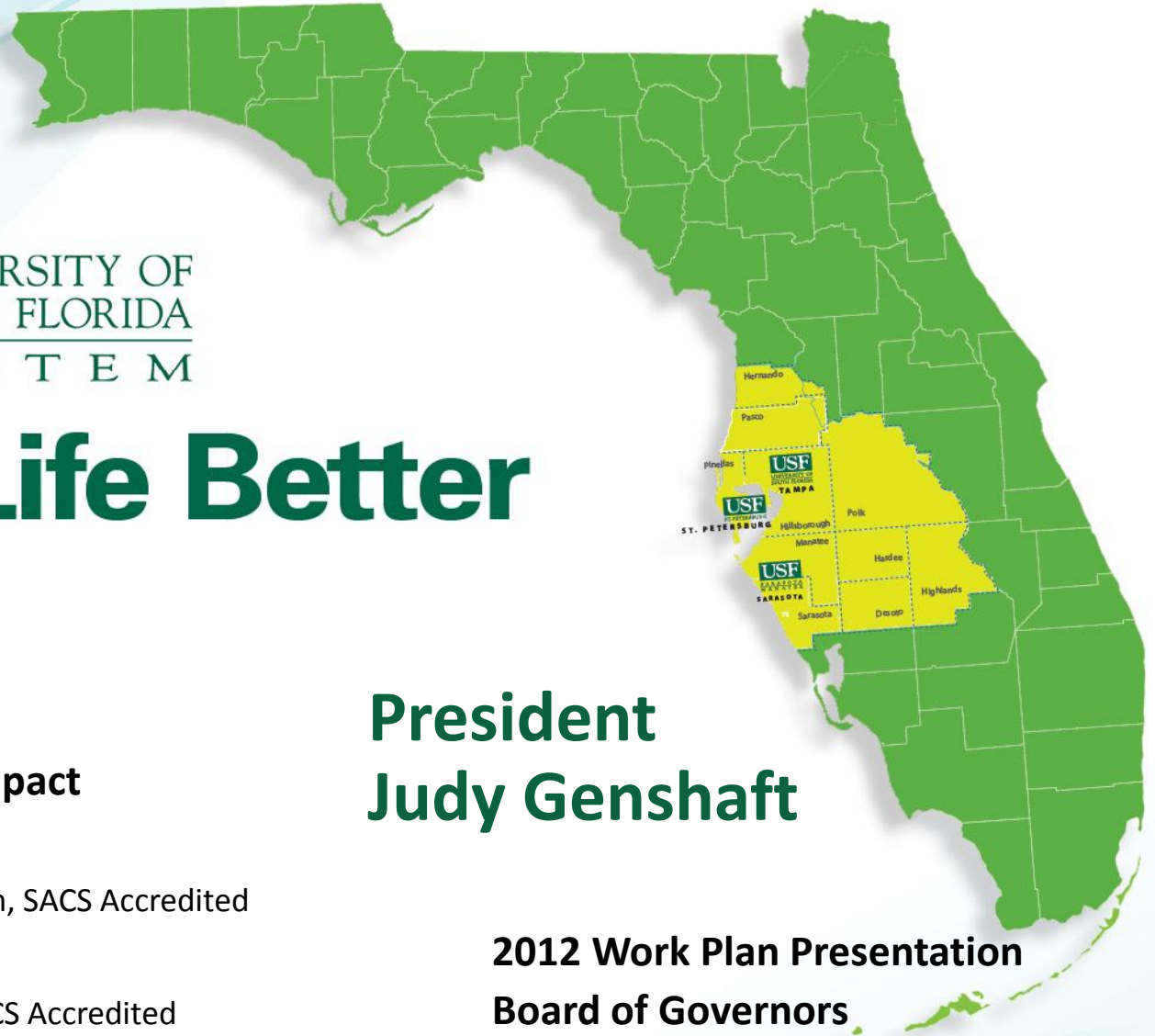


Makes Life Better

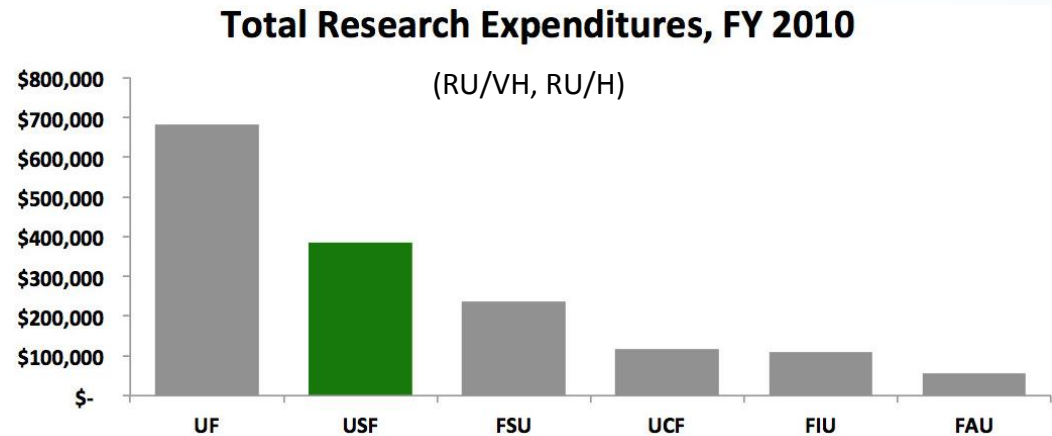
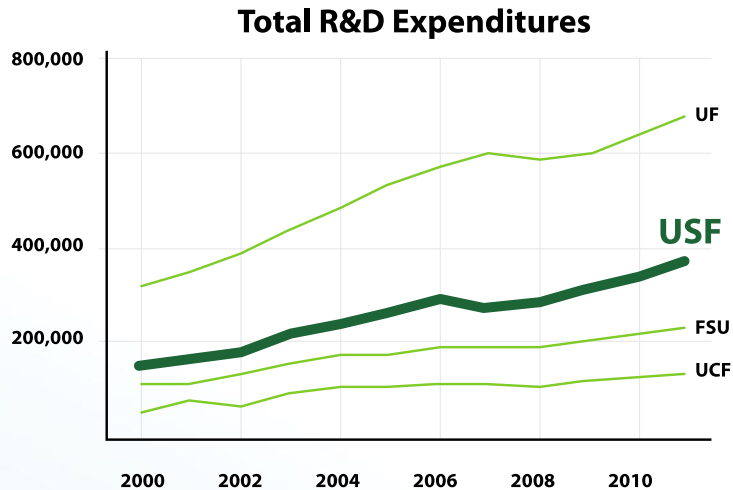
- **47,000 students**
- **\$3.7 billion annual impact**
- **USF Tampa:**
Carnegie Very High Research, SACS Accredited
- **USF St. Petersburg:**
Carnegie Large Masters, SACS Accredited
- **USF Sarasota-Manatee:**
Carnegie Large Masters, SACS Accredited

**President
Judy Genshaft**

**2012 Work Plan Presentation
Board of Governors
June 20, 2012**



Fastest growing: USF's impressive 213 percent growth rate from 2000-2007 led the nation's public institutions receiving federal research funding.



USF - 2nd in Florida since 2001 for research expenditures



Now Top 50:
 USF ranked in the
 Top 50 Research
 Universities, public
 and private -
 National Science
 Foundation.

Only two
 universities in
 Florida are top 50

AAU Members

Purdue
 Rutgers
 Michigan State

SUNY-Buffalo

Princeton
 U Kansas

Brown
 Stony Brook

Tulane
 U Oregon

Rice

**Non-AAU Members
 (RU/VH, RU/H)**

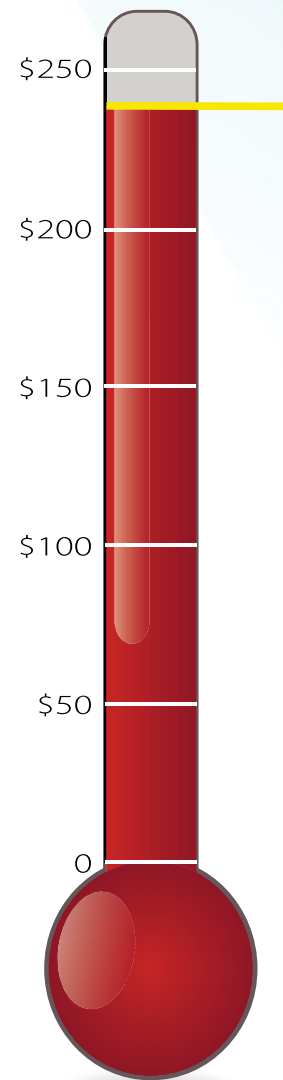
**University of
 South Florida**

U Miami

Arizona State - Tempe
 Virginia Tech
 Wake Forest

North Carolina State
 Florida State
 U Georgia

U Central Florida
 Auburn



**2010 Total Federal
 R&D Expenditures**

National Science Foundation,
 includes USDA

In Millions of Dollars



Research Priorities and ROI:

\$337,000 in research funding per tenured / tenure-track faculty member.

- Highest among all Florida universities
- Above median AAU
- Priorities:
 - Diabetes and autoimmune disorders
 - Drug discovery and development
 - Integrated neurosciences/Alzheimer's
 - Sustainability and the environment
 - Clean energy, public health, urban transportation, water
 - Veterans' reintegration



Patently USF: Ranks 10th worldwide among all universities granted U.S. patents.

- **USF “in an elite entrepreneurial class” for the second year in a row**
- **USF retained its position as 8th in the U.S.**
- **Founded National Academy of Inventors, now worldwide**

Rank	University
1	UC System
2	MIT
3	Stanford
4	Wisconsin
5	Texas
6	Caltech
7	Tsinghua
8	National Taiwan University
9	Illinois
10	USF (86 U.S. Patents, up 3.6%)
11	Michigan

2011: Intellectual Property Owners Association



Planning, Performance and Accountability: USF is a national leader in benchmarking return on investment.

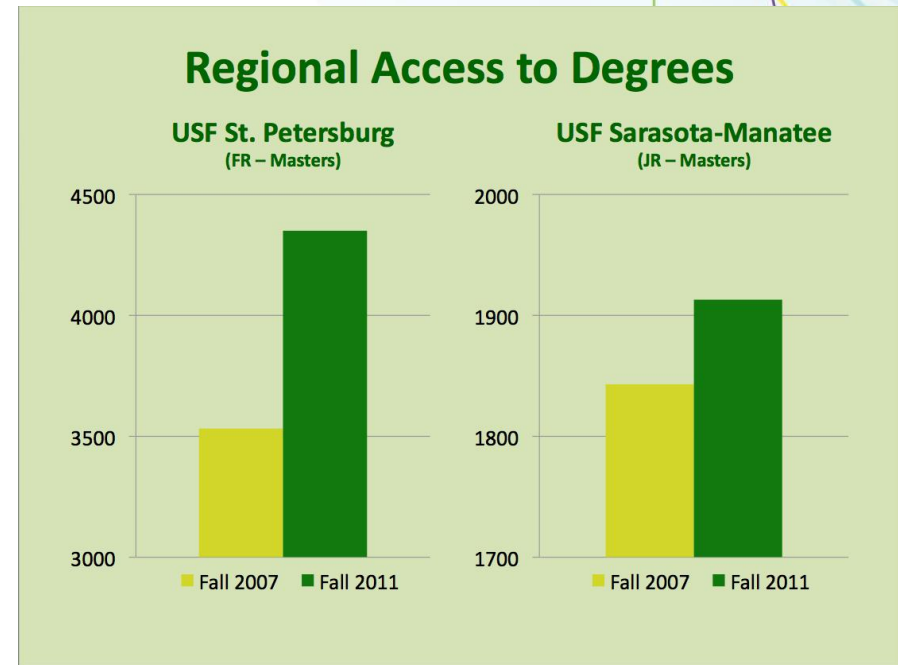
- Two Strategic Plans since 2001
- USF has documented student, faculty, and institutional outcomes
- The performance matrix guides strategic decisions and investment
- Drives student success and increased graduation rates



Strategic growth:

USF shapes its student enrollment profile.

- **USF Tampa:**
 - Balance of undergraduate & graduate programs, 75-25%
 - Enhanced profile/grad rates
 - Student awards: Fulbright, Goldwater, Gilman, Marshall, Udall
 - Leader in distance learning/online
- **Differential missions at USF St. Petersburg and USF Sarasota-Manatee**
- **Strong partnerships with Florida College System**



Fiscally conservative - Academically innovative

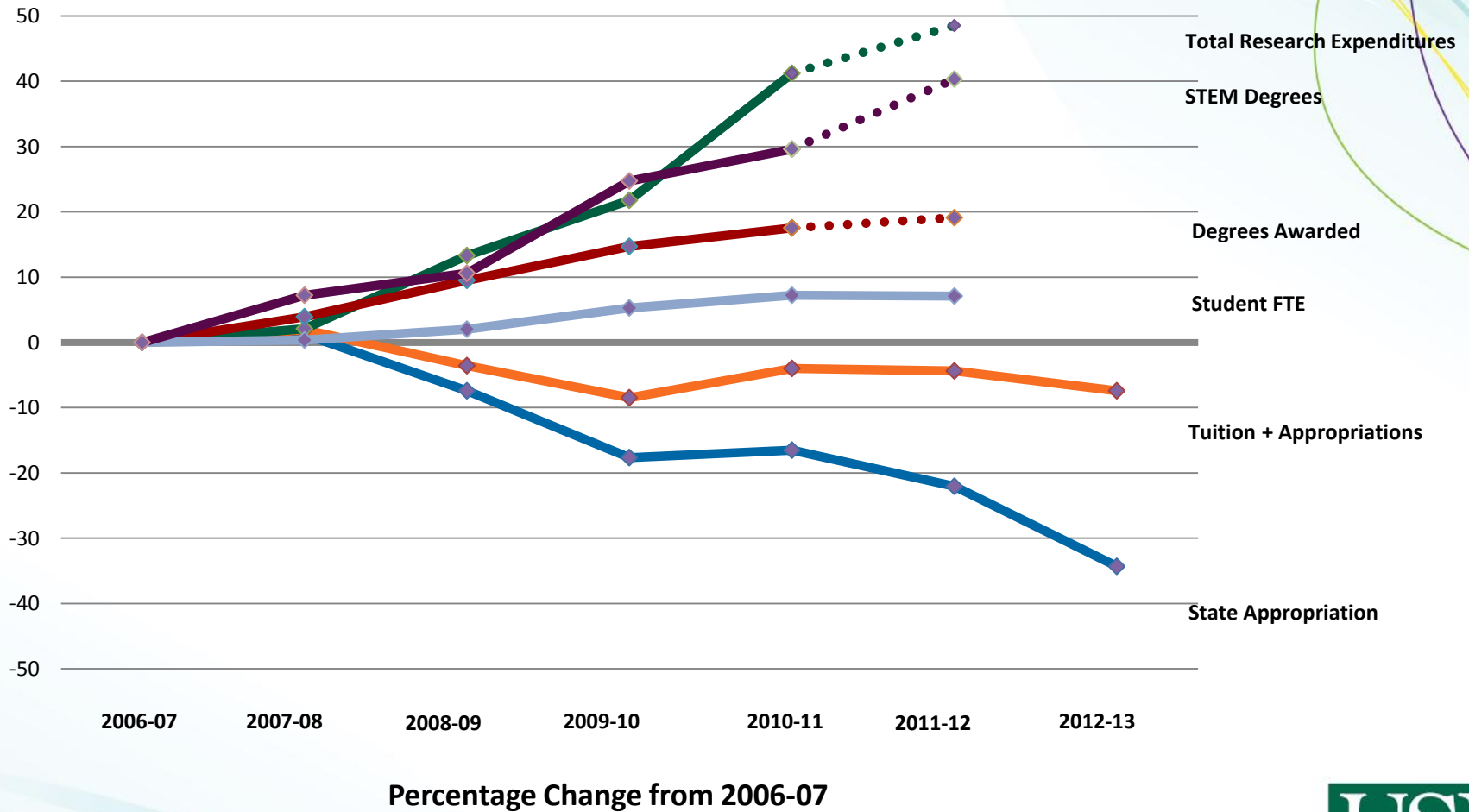
USF has met the changing needs of students and business.

Since 2008:

- \$125 million lost in state support
- 267 faculty positions lost - \$30.0m
- Cut purchasing, travel, equipment, operations, contracts - \$2.7m
- Energy efficiency, utilities cuts - \$3.7m
- Early retirement - \$4.1m est.
- USF System central services - \$2.4m
- Increased class size, increased workload for faculty - \$2.3m
- Eliminated administrative positions \$2.1m
- 2011/2012: Terminated 12 programs; added 9 strategic programs
- Closed underperforming centers and institutes
- Academic restructuring for greater efficiency
- Expanded access through emerging technologies



Diminished Investment - Increased Productivity



Investing in our students: USF BOT tuition differential proposal

Proposed use:

- **Need-based financial aid. USF BOT increased percentage of tuition differential for aid, to 40% from 30%**
- **Expanding highly skilled workforce, and assuring job placement. USF is already the 2nd highest producer of STEM graduates in Florida**
- **Academic advising, and veterans' support**
- **Financial counseling and debt reduction**



Innovation and Partnership: *It's in our DNA.*

- Draper Laboratory, SRI International
- Center for Advanced Medical Learning and Simulation (CAMLs)
- Tampa Bay Lightning - new MBA in Sport and Entertainment Management
- ChromAlloy, Nielsen, Verizon Wireless
- Agilent Technologies
- MacDill AFB, CENTCOM, SOCOM
- Veterans Administration
- Florida High Tech Corridor
- Tampa Innovation Alliance
- Florida College System

