



# Workforce Initiatives Overview

**Ms. Emily Sikes**

**Assistant Vice Chancellor for Strategic Initiatives and Economic Development**

**January 27, 2021**

**[www.flbog.edu](http://www.flbog.edu)**

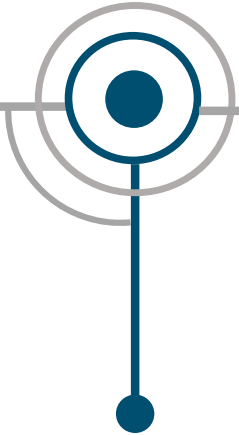
# Board of Governors Workforce Initiatives



# Aligning Degrees to Florida's Needs

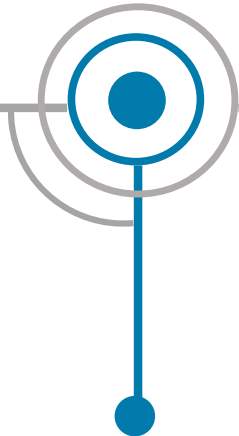


## New Academic Programs



Board office reviews all new academic programs to ensure workforce demand

## Existing Academic Programs



Board office periodically reviews existing academic programs to ensure efficient use of resources

## Programs of Strategic Emphasis



Updated 2019 & 2020 to identify state workforce needs & emerging fields; used in PBF

## Gap Analyses



Review of labor market data including workforce demand projections & related graduate production

# Strong Talent Pipeline to Diversify Florida's Economy



SUS Career Centers work to connect students with employers & prepare them for employment

Collaboration with economic development stakeholders to recruit & retain businesses



SUS research opportunities allow students to gain experience for future jobs

# Accountability: PBF Metrics



## Post Graduation Outcomes

**-1-**

% of Bachelor's  
Grads Enrolled or  
Employed  
(\$25,000+)

**70%**

2017-18

**-2-**

Median Wages of  
Bachelor's  
Graduates  
(Employed Full-Time)

**\$39,900**

2017-18

### Impact

**More graduates** are **securing employment** after graduation & **earning higher wages**

## Programs of Strategic Emphasis

**-6-**

% of Bachelors  
Degrees Awarded  
within Programs of  
Strategic Emphasis

**52.6%**

2018-19

**-8-**

% of Graduate  
Degrees Awarded  
within Programs of  
Strategic Emphasis

**63.8%**

2018-19

### Impact

Universities are awarding **more bachelor's & graduate degrees** in **areas critical to Florida**

# Accountability: Post-Graduate Outcomes



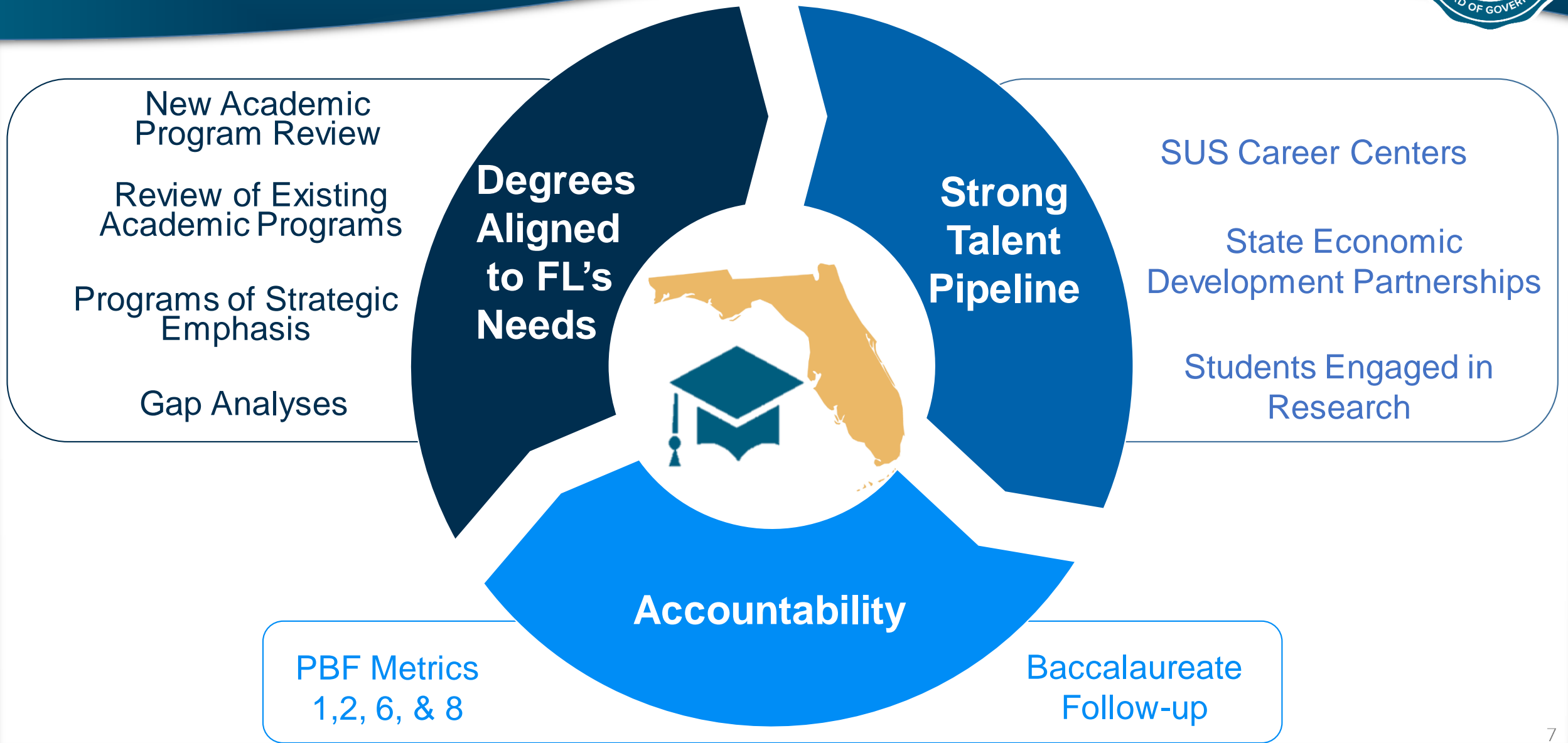
## **Baccalaureate Follow-up Study** Outcomes 1, 5 & 10 years after graduation

**Most graduates were  
employed & worked full-time**

**More than 1/3 of graduates  
go on to receive another  
credential**

**Wages increase 57%  
by year 10**

# Board of Governors Workforce Initiatives





[www.flbog.edu](http://www.flbog.edu)