



The University of Florida *College of Dentistry*

Teresa A. Dolan, DDS, MPH
Professor and Dean

352 273 5802

tdolan@dental.ufl.edu

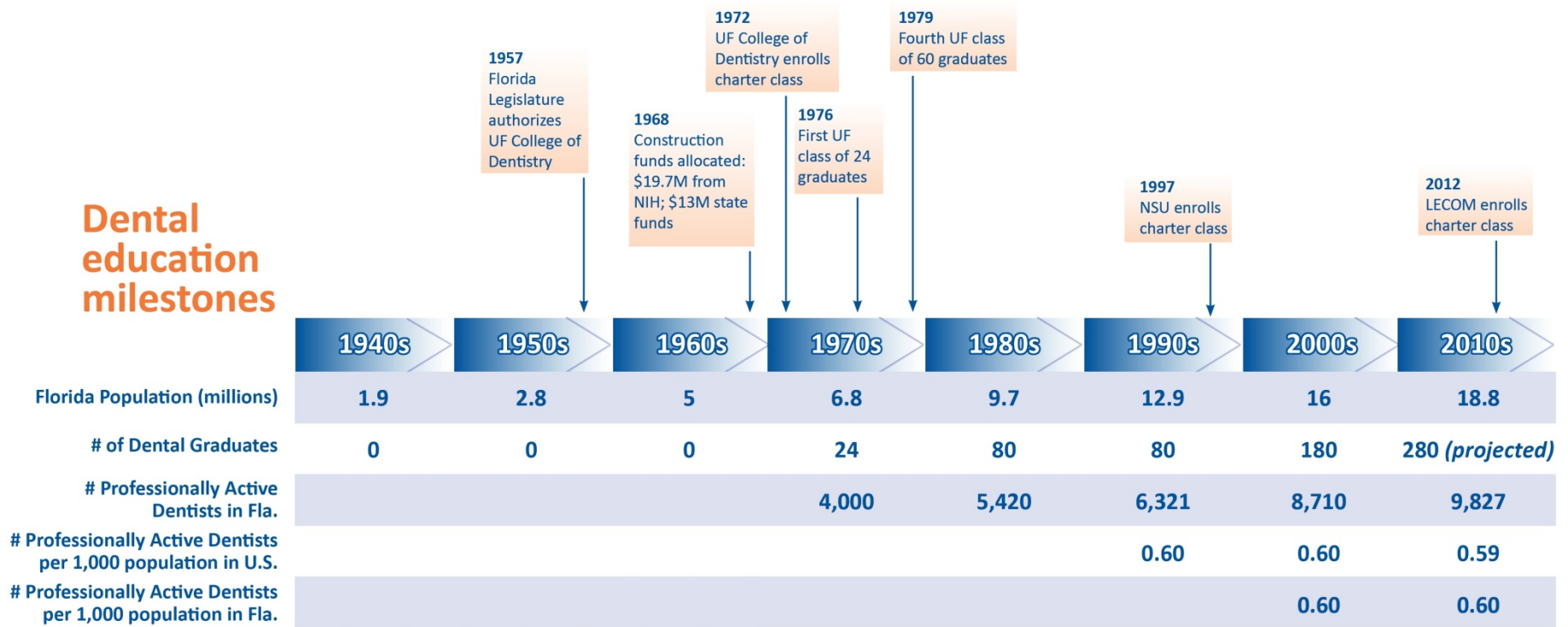
www.dental.ufl.edu



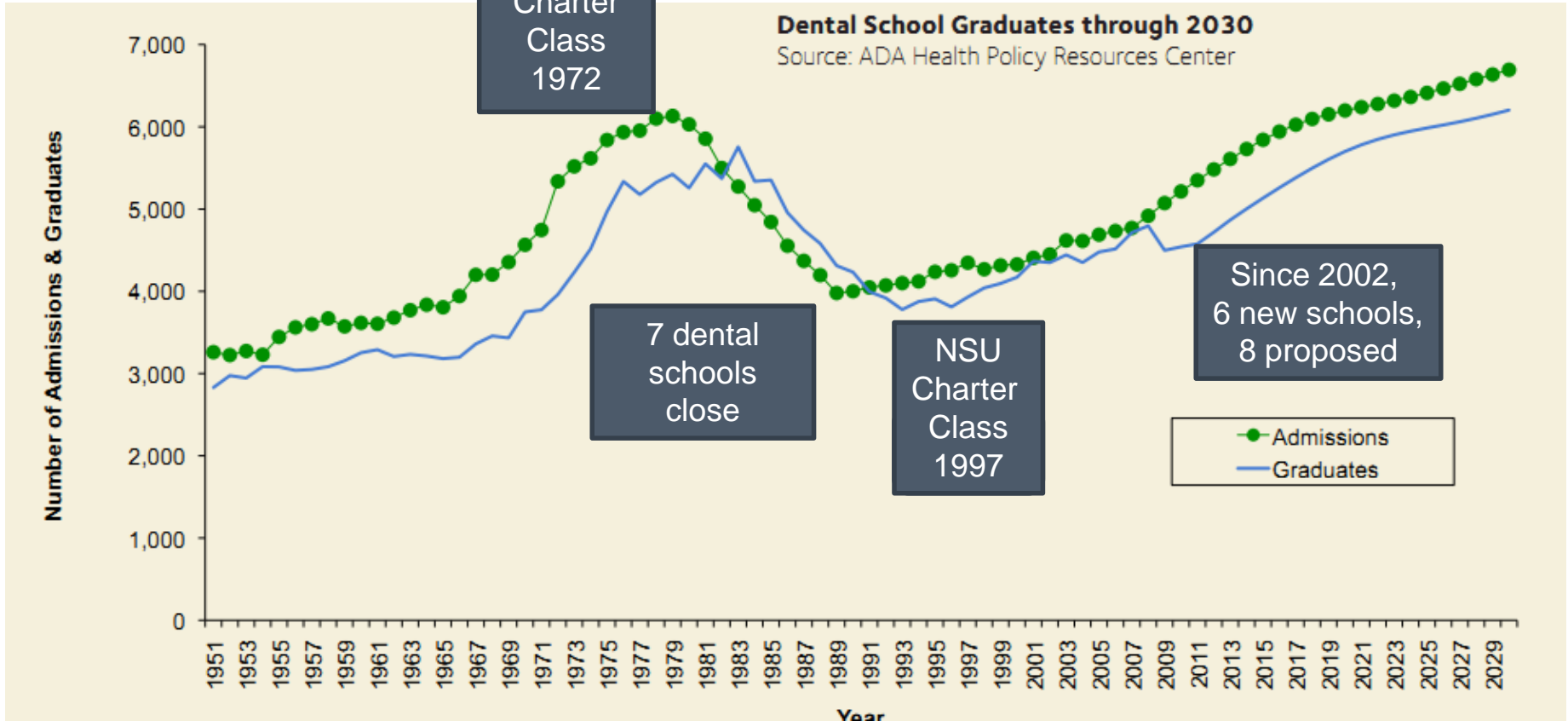


Dentistry in Florida

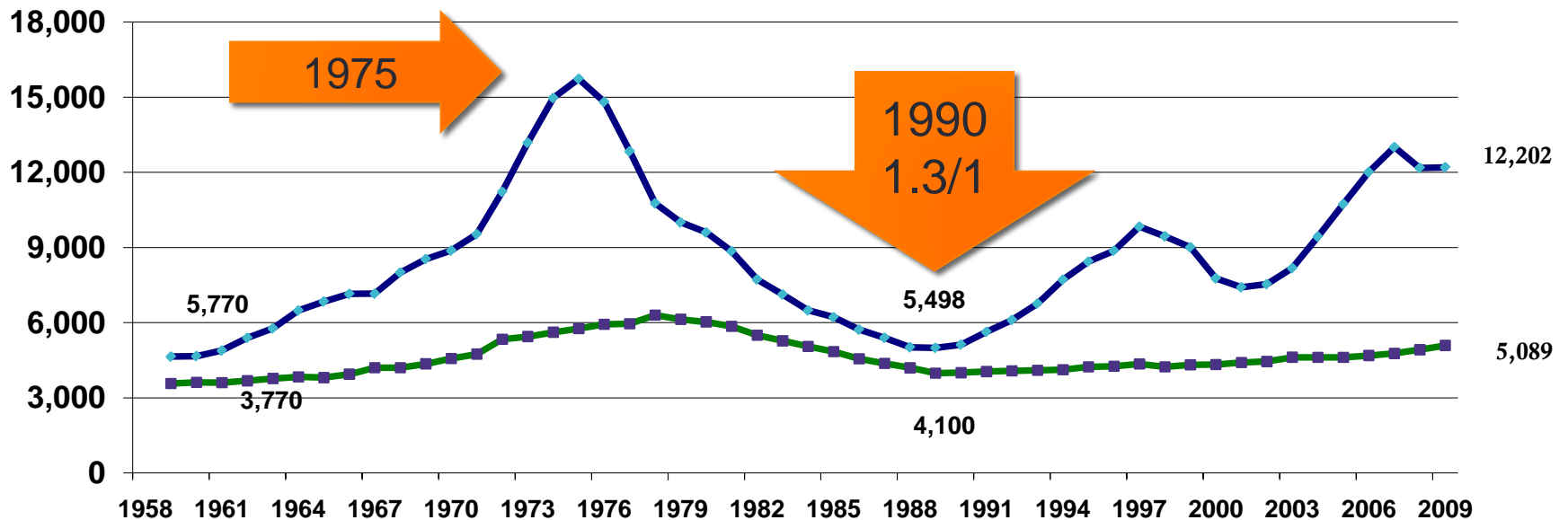
Dental education milestones



National Trends in Dental School Admissions and Graduates, 1951-2030

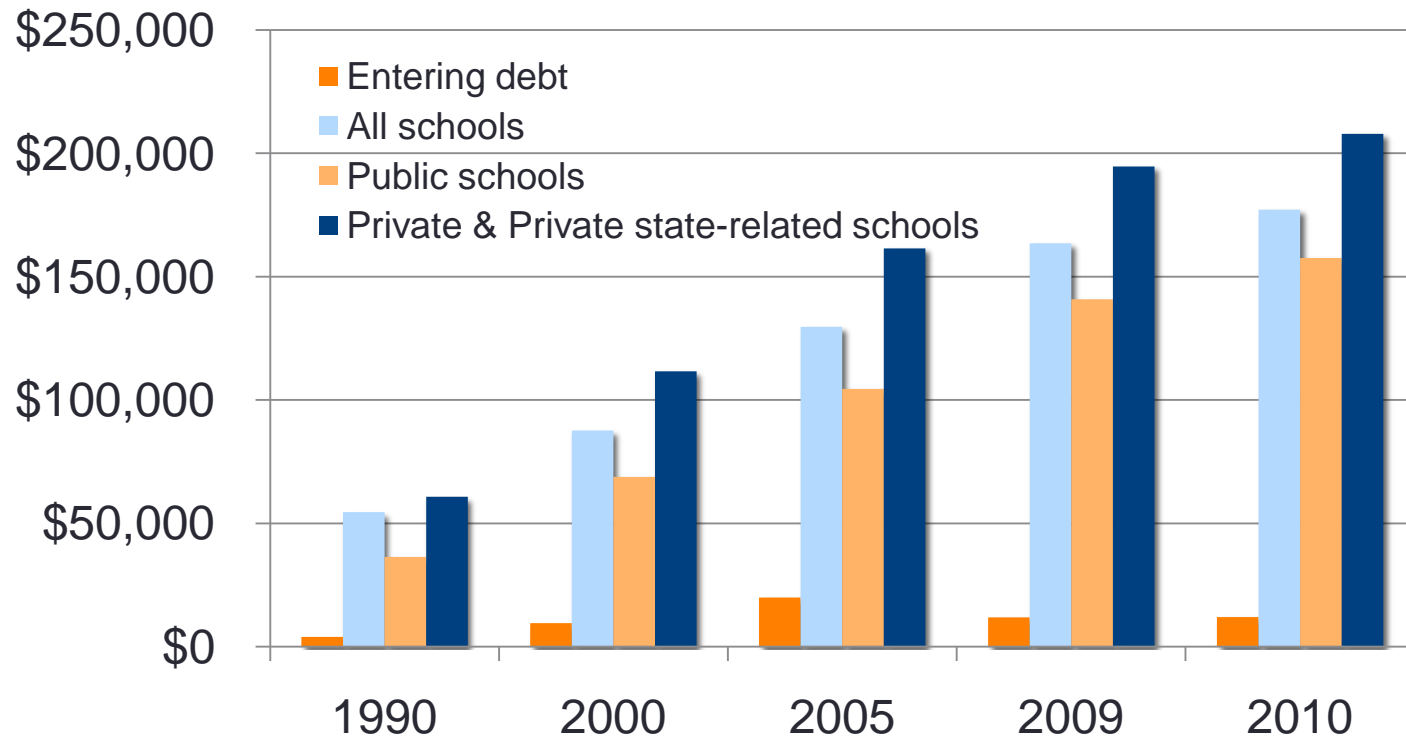


U.S. Dental School Applicant and First-Year Enrollment Trends 1959 - 2009

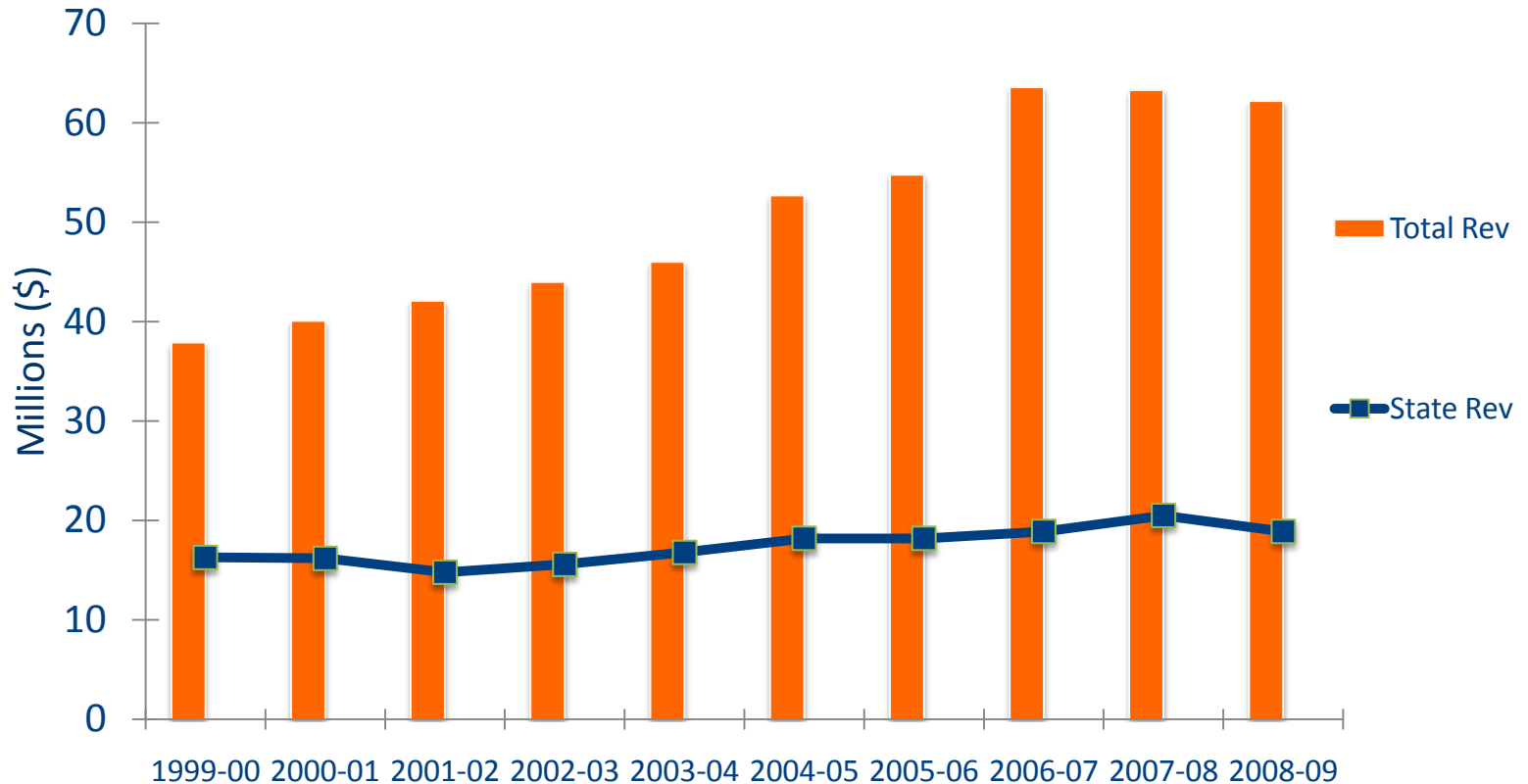


Source: American Dental Education Association, Applicant Analysis Survey

Dental Student Graduating Debt



Trends in UFCD Operating Budget, 1999-09



NOTE: State Revenues include General Revenues and Tuition.

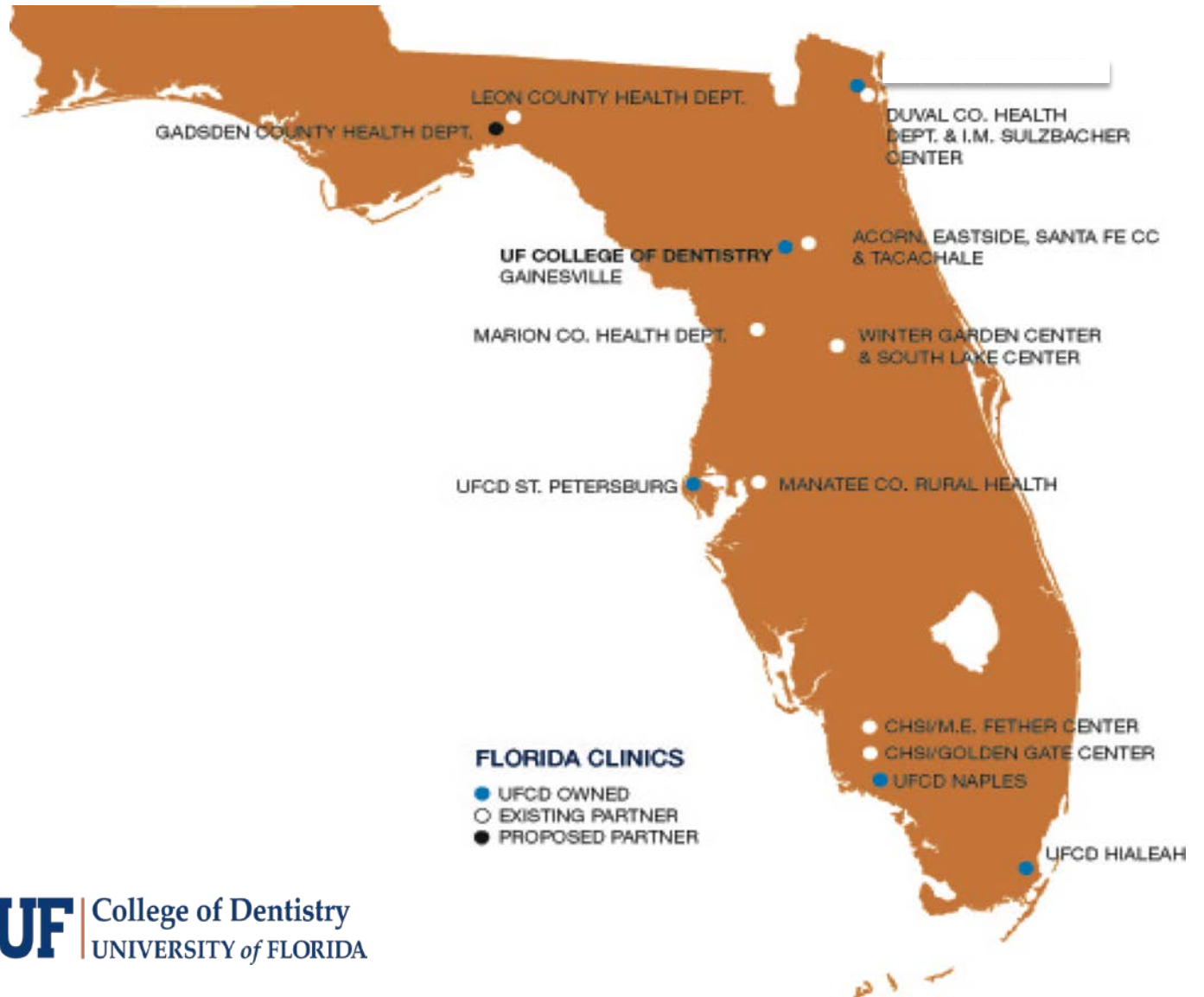
UF College of Dentistry “At a Glance”

Students	455
DMD	328
Advanced Education	127
Fulltime faculty	134
Staff	258
Degree and certificate programs	16
Clinic locations	Gainesville, Hialeah, Naples, and Seminole
Patient visits	120,761
Revenue (FY10-11)	\$ 60,694,785
Expenditures (FY10-11)	\$ 61,174,301
Research funding (FY10-11)	\$ 18,096,185



The UF College of Dentistry

Statewide Network for Community Oral Health



NCEF Pediatric Dental Center in Naples

- Public-Private Partnership (NCEF, UF, Edison College)
- Opened in December 2008
- 10,000 patient visits last year
- Almost all patients are at 200% poverty and below.



UF's Commitment to diversity

- 40 percent of our DMD students report themselves as belonging to a minority group; 50 of the 328 students are Hispanic and 22 are African American.
- Ranked 3rd in the US in Hispanic enrollment
- For more than 10 years the college has self-funded a Summer of Learning program targeting underrepresented minority students.



Opportunities

Expand UF College of Dentistry DMD program:

- Build on existing resources and expertise at UF
- Expand class size and modernize facilities in Gainesville.
- Expand current community-based education model.
- Expand the diversity of dental students.
- Collaborate with interested State University System schools and other public and private partners.





The University of Florida *College of Dentistry*

Teresa A. Dolan, DDS, MPH
Professor and Dean

352 273 5802

tdolan@dental.ufl.edu

www.dental.ufl.edu