



STATE UNIVERSITY SYSTEM *of* FLORIDA

Board of Governors

2009 - 2010 Annual Report

Dorothy J. Minear, Ph.D.
January 20, 2011

www.flbog.edu

Comprehensive System of Strategic Planning, Budgeting, and Accountability

INCREASING STRATEGIC ALIGNMENT AMONG:

- Targeted State Needs
- State University System Strategic Plan
- University Strategic Plans
- Multi-Year University Work Plans
- Annual Legislative Budget Requests
- Annual Accountability Reports



STATE UNIVERSITY SYSTEM *of* FLORIDA
Board of Governors

2009 - 2010

Continuous Improvement of Processes and Products:

- Refinement of Data Definitions
- New Metrics This Year
- Inclusion of Targets Articulated in University Work Plans
- More Reporting on Efficiencies
- Continued Work on Outstanding Metrics
- Establishment of Underlying Database
- More Electronic Submissions
- Use of Business Intelligence to Pull Some Information Forward for the Report



STATE UNIVERSITY SYSTEM of FLORIDA
Board of Governors

Structure of 2009-2010 Annual Report

Volume I

- Key Developments in 2009-2010
- System Data Dashboard
- System-Level Report
- System Data Tables
- Individual University Annual Reports
 - University Data Dashboard
 - University Report
- Appendices - Including Tuition Differential Report

Volume II

- Individual University Data Tables



Key Developments in 2009-2010

- Talent and Innovation
- Addressing Local, State, National, and International Challenges
- State University System Governance and Cross-Sector Coordination
- Tuition and Fees
- Focusing Operations and Pursuing Efficiency
- Strategic Planning and Performance Monitoring



STATE UNIVERSITY SYSTEM *of* FLORIDA
Board of Governors

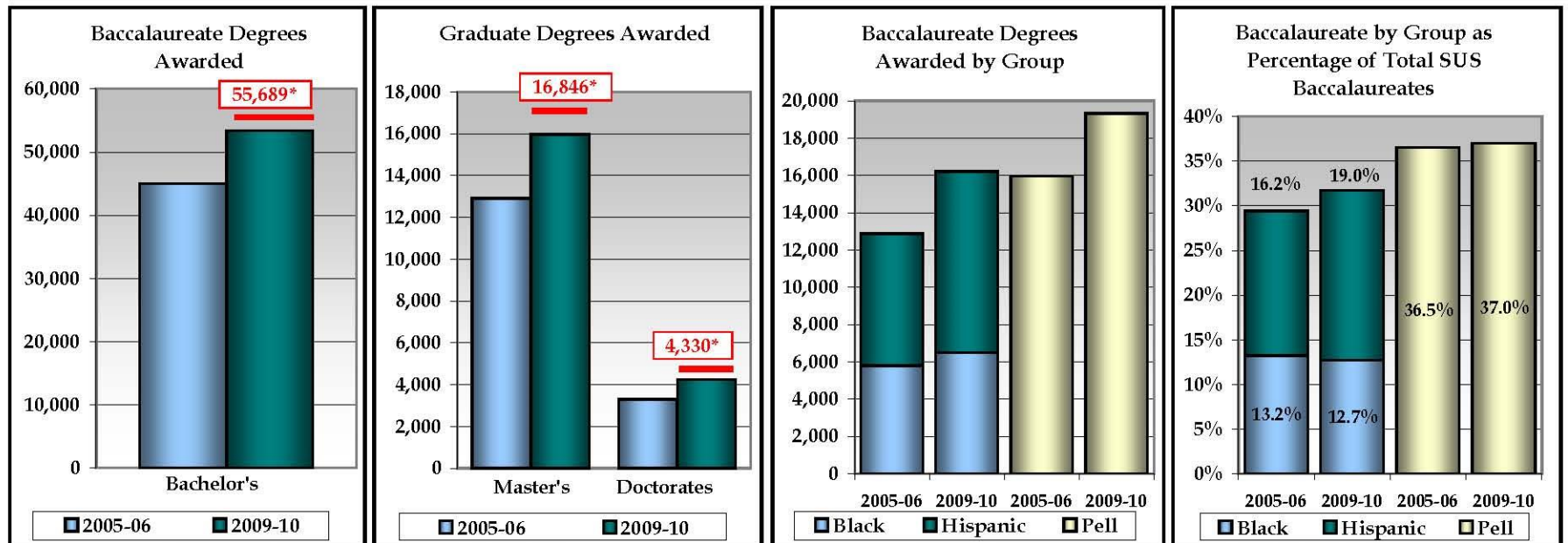
State University System of Florida 2010 Annual Report

Institutions

Florida A&M University, Florida Atlantic University, Florida Gulf Coast University, Florida International University, Florida State University, New College of Florida, University of Central Florida, University of Florida, University of North Florida, University of South Florida, University of West Florida,

Enrollments	#	%	Degree Programs Offered (As of Spr. 2010)			Basic Carnegie Classifications	
TOTAL (Fall 2009)	312,259	100%	TOTAL		1,782	UF, FSU, USF	Research Universities (Very High Research Activity)
Black	42,719	14%	Baccalaureate		733		
Hispanic	57,870	19%	Master's & Specialist's		738	FAU, UCF, FIU	Research Universities (High Research Activity)
White	175,352	56%	Research Doctorate		282		
Other	36,318	12%	Professional Doctorate		29	FAMU, UWF	Doctoral/Research Universities
Full-Time	223,663	72%	Faculty (Fall 2009)	Full-Time	Part-Time		
Part-Time	88,596	28%					
Undergraduate	240,102	77%	TOTAL	12,389	4,475	UNF, FGCU	Master's Colleges and Universities (Larger Programs)
Graduate	59,583	19%	Tenure/T. Track	7,805	253		
Unclassified	12,574	4%	Other Faculty/Instr.	4,584	4,222	NCF	Arts & Sciences Focus, No Graduate Coexistence

BOARD OF GOVERNORS - STATE UNIVERSITY SYSTEM GOAL 1: ACCESS TO AND PRODUCTION OF DEGREES



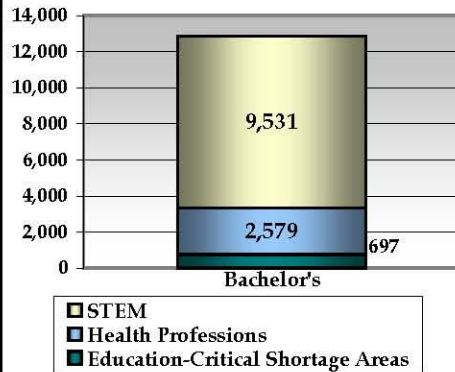
*2012-13 Targets for Degrees Awarded.

Note: All targets are based on 2010 University Workplans

[2012-13 Targets for Baccalaureates by Group
Reported in Volume II - Table 41.]

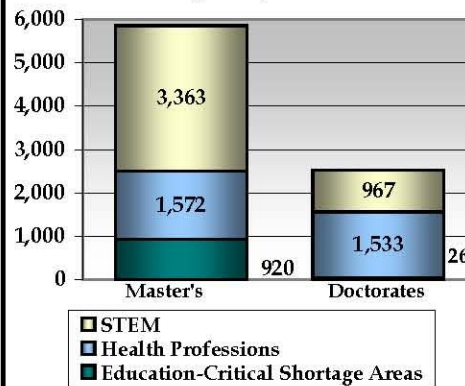
BOARD OF GOVERNORS - STATE UNIVERSITY SYSTEM GOAL 2: MEETING STATEWIDE PROFESSIONAL AND WORKFORCE NEEDS

**Baccalaureate Degrees Awarded
in Select Areas of Strategic
Emphasis, 2009-10**



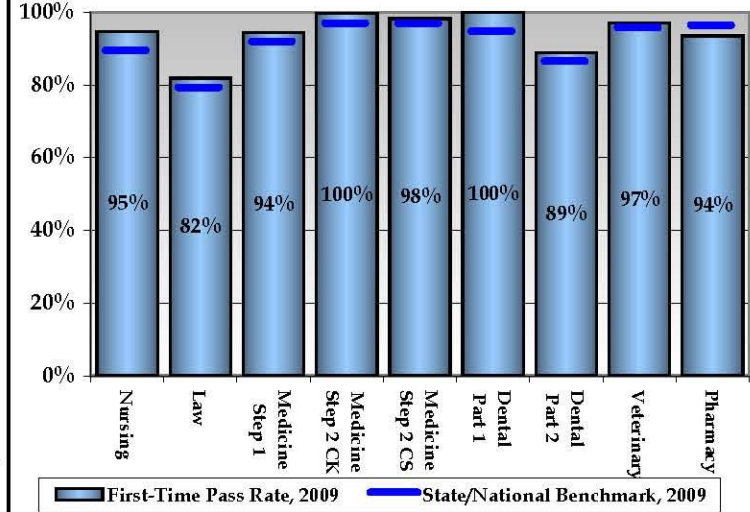
**2012-13 Target: 9 Increase & 2 Maintain
(2008-09 Baseline: 12,005 Total)**

**Graduate Degrees Awarded in
Select Areas of Strategic
Emphasis, 2009-10**



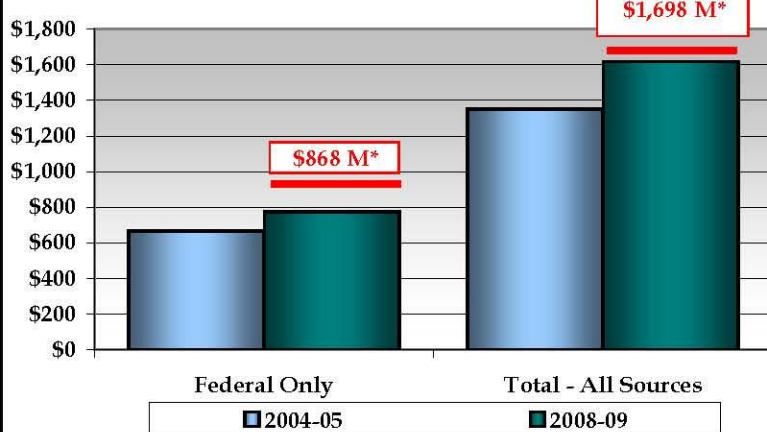
**2012-13 Target: 10 Increase
(2008-09 Baseline: 7,768 Total)**

Licensure Exam Pass Rates



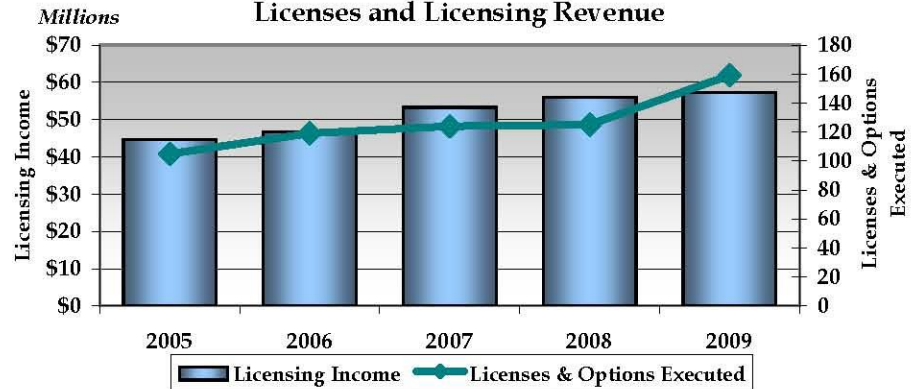
BOARD OF GOVERNORS - STATE UNIVERSITY SYSTEM GOAL 3: BUILDING WORLD-CLASS ACADEMIC PROGRAMS AND RESEARCH CAPACITY

Academic Research and Development Expenditures



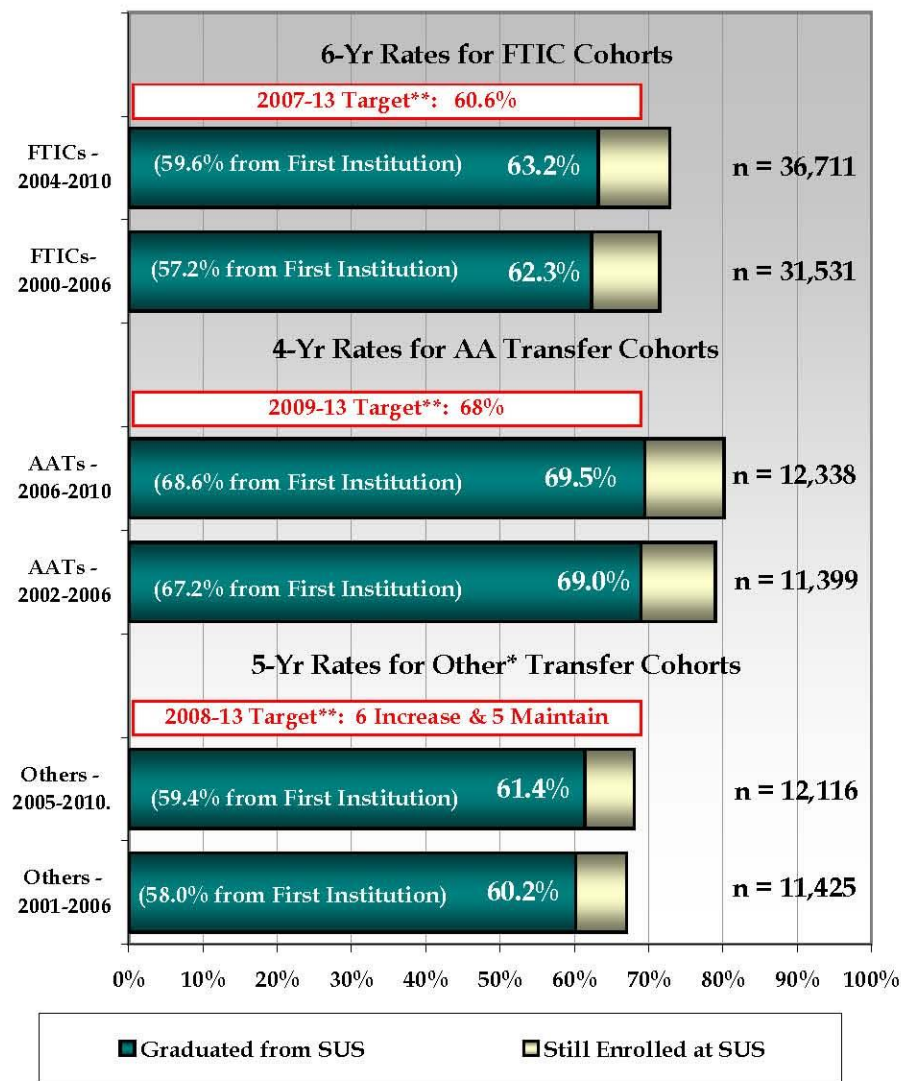
***2011-12 Targets for Research and Development Expenditures**

**University Innovations Generating Revenue Through
Technology Transfer:
Licenses and Licensing Revenue**



**2011-12 Targets: Licenses - 9 Increase & 1 Maintain (2008 Baseline - 125)
Licensing Revenue - 9 Increase & 1 Maintain (2008 Baseline - \$55,885,510)**

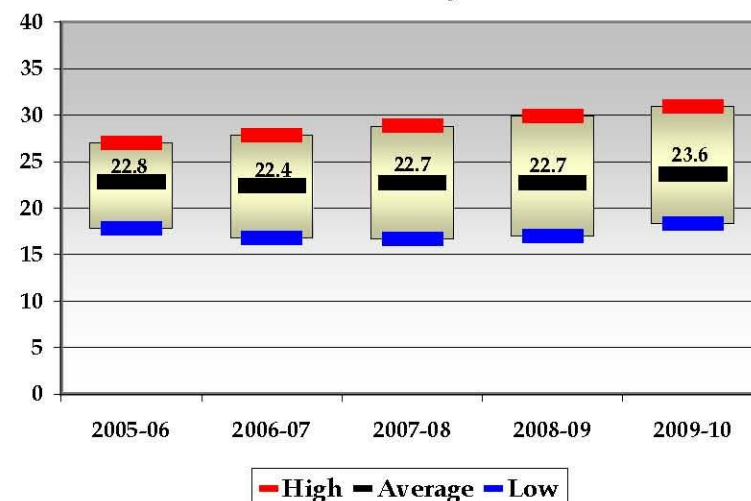
Undergraduate Retention and Graduation Rates



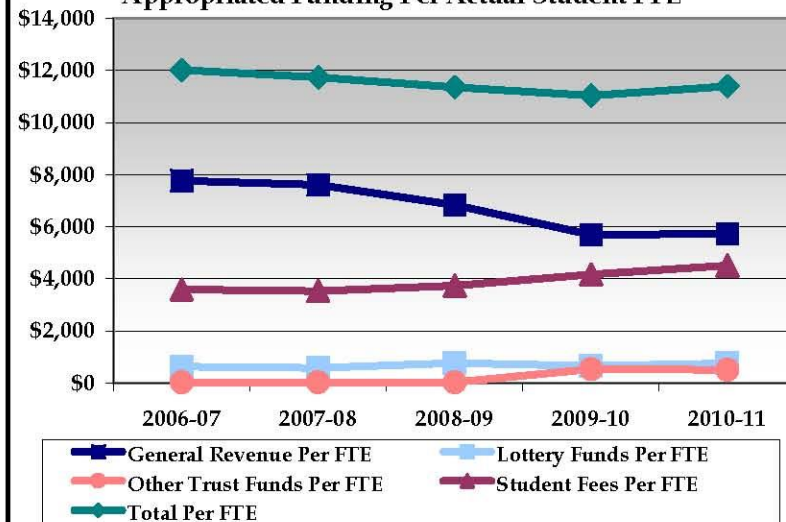
* The composition of "Other Transfer" cohorts may vary greatly by institution and by year.

** Graduation from the SAME Institution

Student-to-Faculty Ratios



Appropriated Funding Per Actual Student FTE**



** FTE for this metric uses the standard IPEDS definition of FTE, equal to 30 credit hours for undergraduates and 24 for graduates.

2010 - 2011: Looking Forward

Continuous Improvement of Processes and Products:

- Separate Report on 21st Century Programs
- Continue Work on Jobs Metrics
- Continue Work on Additional Professional Licensure/ Certification Examination Pass Rates
- Use of Business Intelligence to Make Data Available in an Interactive Web-Base Format
- Use of 2009-2010 Annual Report to Inform Decision Making Regarding Updates to University Work Plans and Legislative Budget Request





STATE UNIVERSITY SYSTEM *of* FLORIDA

Board of Governors

2009 - 2010 Annual Report

Dorothy J. Minear, Ph.D.

January 20, 2011

www.flbog.edu