



STATE UNIVERSITY SYSTEM *of* FLORIDA

Board of Governors

Budget & Finance Committee

Tico Perez, Chair

June 23, 2011

www.flbog.edu

SUS Undergraduate Increases

Year	Base Tuition	Tuition Differential	Total
2006-07	3%	0%	3%
2007-08	5%	0%	5%
2008-09*	6%	8%	14%
2009-10	8%	7%	15%
2010-11	8%	7%	15%
2011-12	8%	7%**	15%

*Only 5 universities were authorized to charge tuition differential.

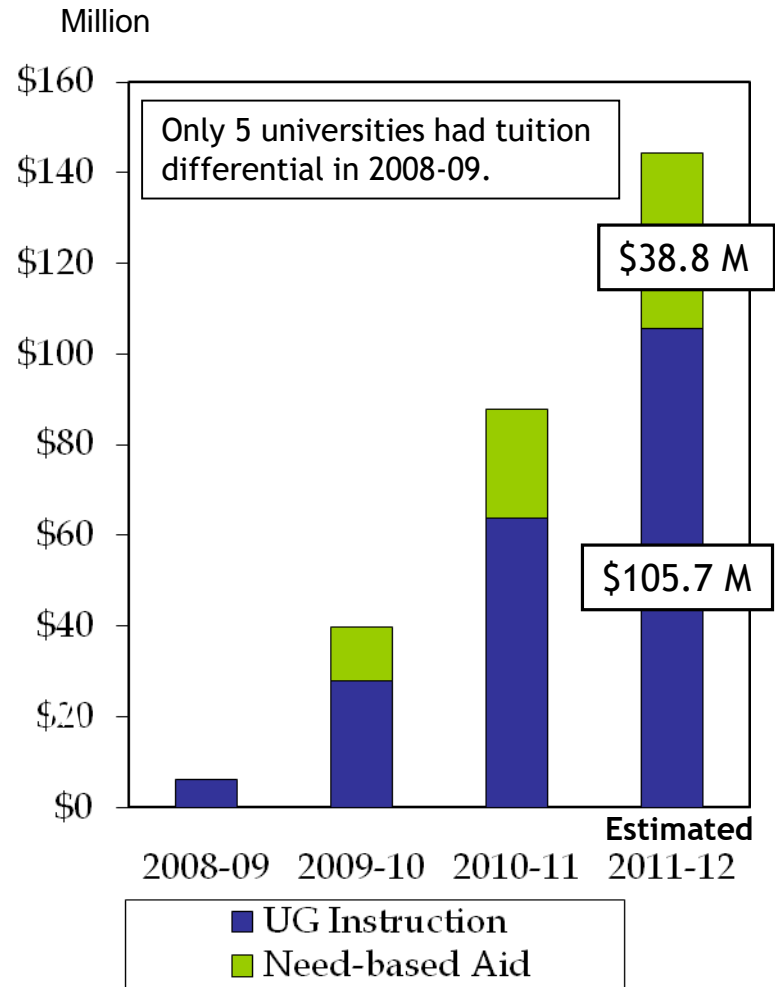
**Proposed increases.



Tuition Differential Per Credit Hour & Revenue Collected

	2008-09	2009-10	2010-11	2011-12 Proposed Differential
FAMU		\$5.74	\$12.80	\$21.42
FAU		\$5.74	\$12.80	\$21.42
FGCU		\$5.74	\$12.80	\$21.42
FIU	\$6.96	\$13.74	\$22.00	\$32.00
FSU	\$6.96	\$13.74	\$22.00	\$32.00
NCF		\$5.74	\$12.80	\$21.42
UCF	\$2.32	\$8.41	\$15.88	\$24.96
UF	\$6.96	\$13.74	\$22.00	\$32.00
UNF		\$5.74	\$12.80	\$21.42
USF*	\$6.96	\$13.74	\$22.00	\$32.00
UWF		\$5.74	\$12.80	\$21.42

Amounts per credit hour.
* Tampa Campus



STATE UNIVERSITY SYSTEM of FLORIDA
Board of Governors

Resources Are Being Utilized to Ensure Students Have Access to Needed Courses - 2010-11

	Course Sections Added or Saved	Adjuncts / Faculty Hired or Retained	Advisors Hired or Retained
FAMU	585	319	
FAU	500	75	9
FGCU	286	14	
FIU	573	58	33
FSU	104	27	
NCF	3	3	
UCF	929	114	28
UF	755	130	3
UNF	240	36	
USF	343	110	21
UWF		20	
Total	4,318	906	41



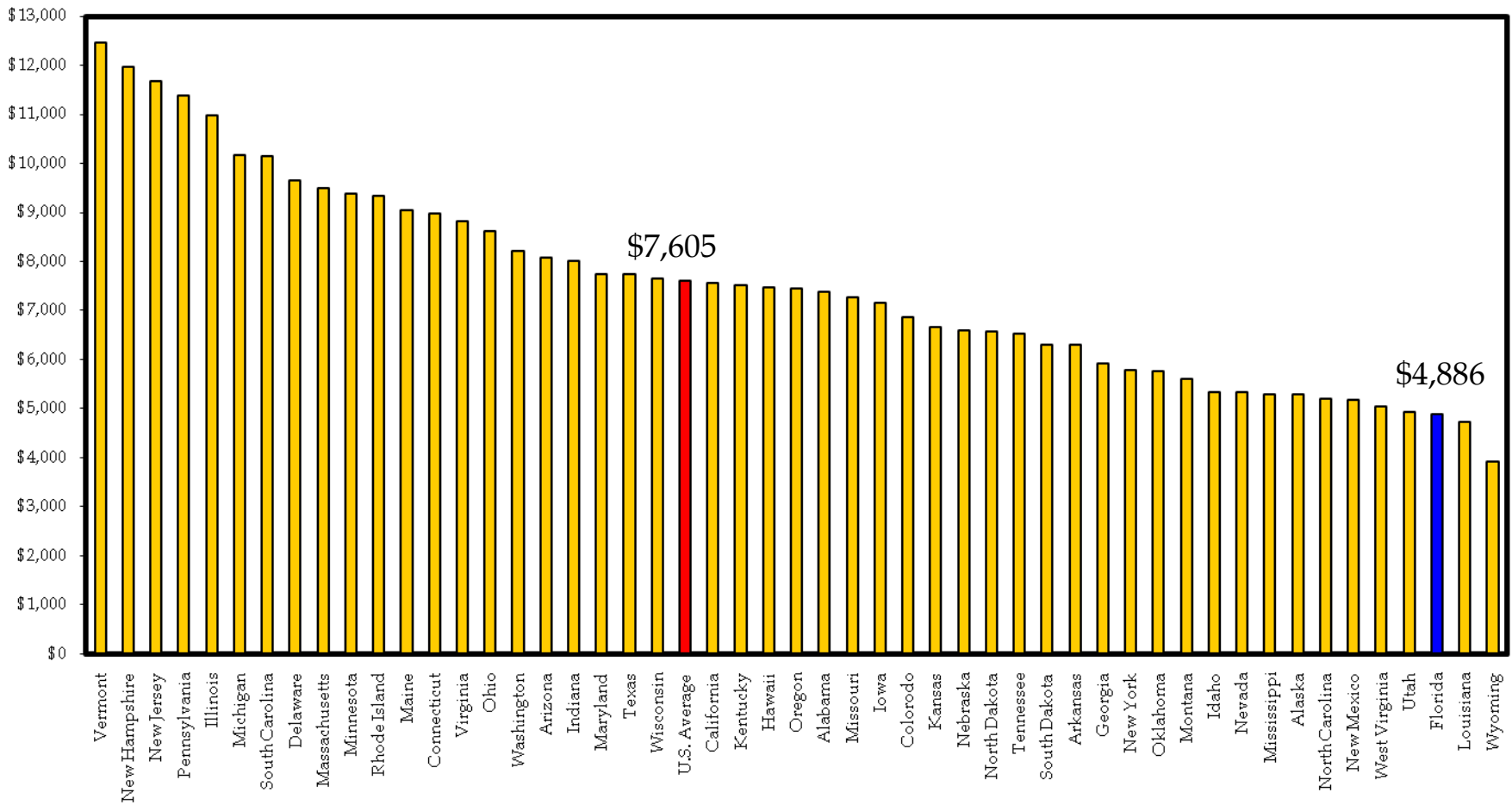
Over 20,750 Students Received a Tuition Differential Need-Based Financial Aid Award in 2010-11

	# of Students	\$ Mean Award
FAMU	248	\$1,755
FAU	826	\$1,000
FGCU	735	\$1,674
FIU	5,207	\$640
FSU	2,196	\$1,625
NCF	35	\$545
UCF	5,610	\$2,240
UF	1,403	\$2,587
UNF	243	\$3,738
USF	3,696	\$1,187
UWF	554	\$1,128



Undergraduate Tuition & Fees by State for 2010-11

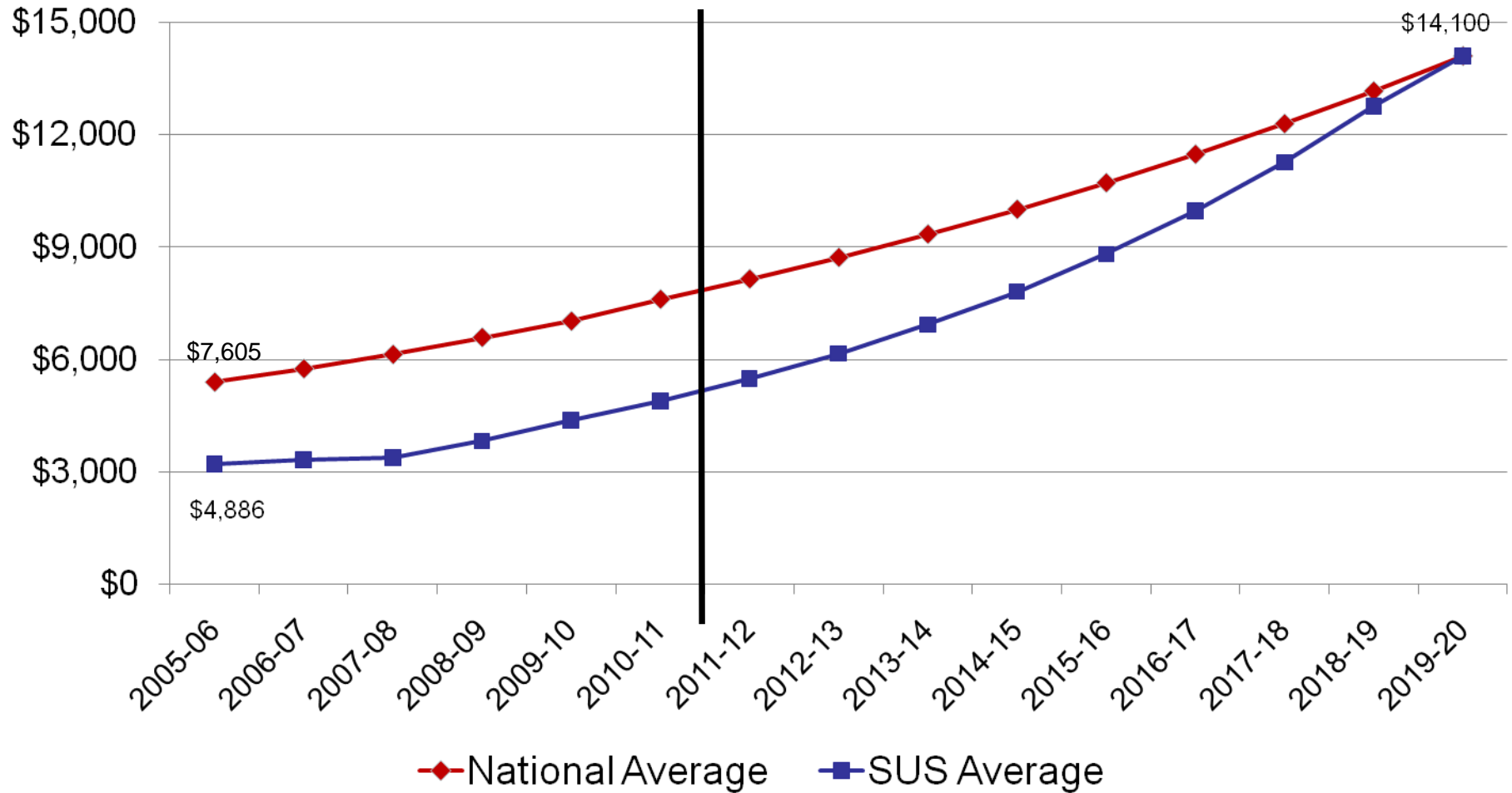
Florida remains 48th



STATE UNIVERSITY SYSTEM of FLORIDA
Board of Governors

College Board, Trends in College Pricing, 2010

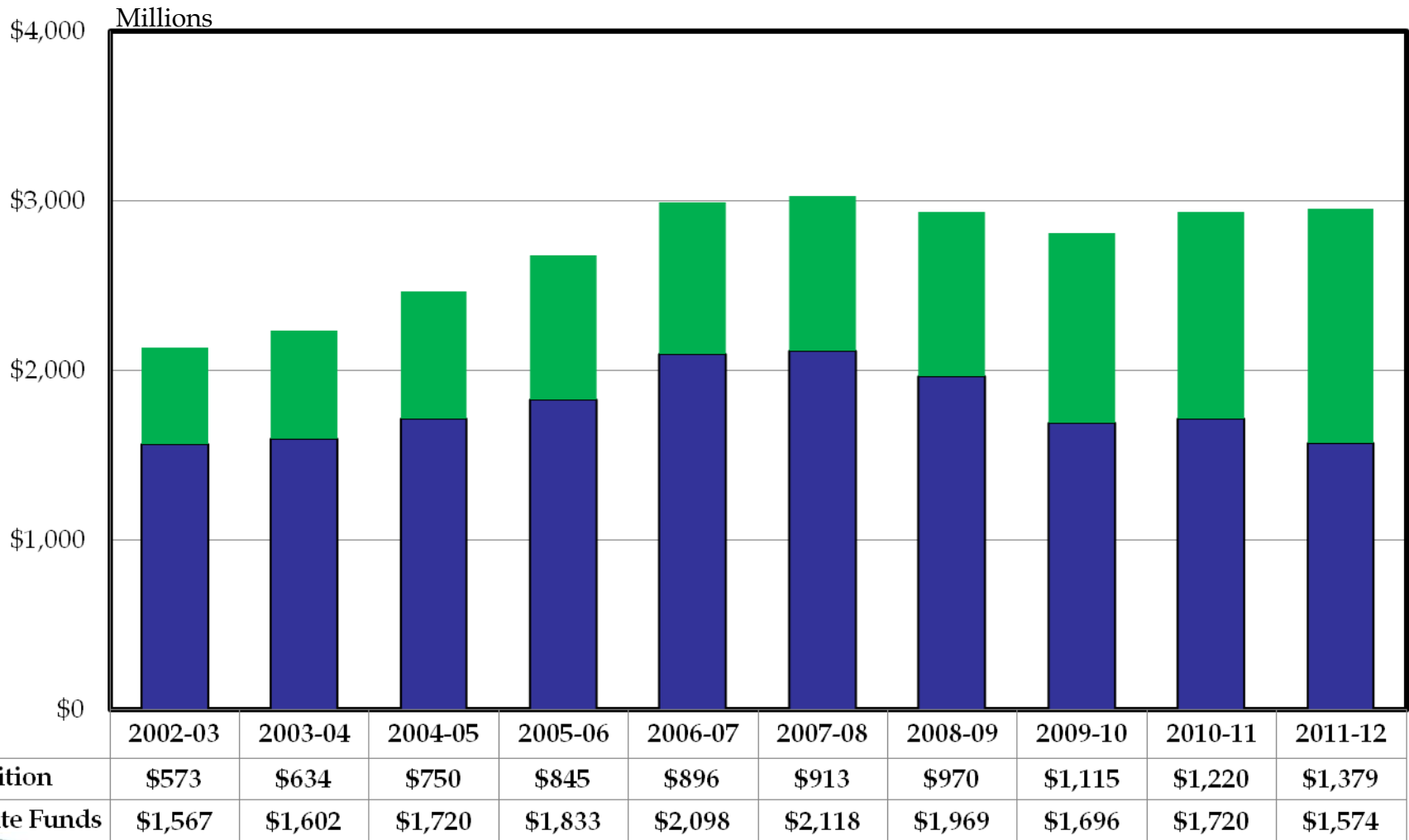
SUS Institutions Would Reach the National Average In 10 Years if Recent Trends Continue



STATE UNIVERSITY SYSTEM of FLORIDA
Board of Governors

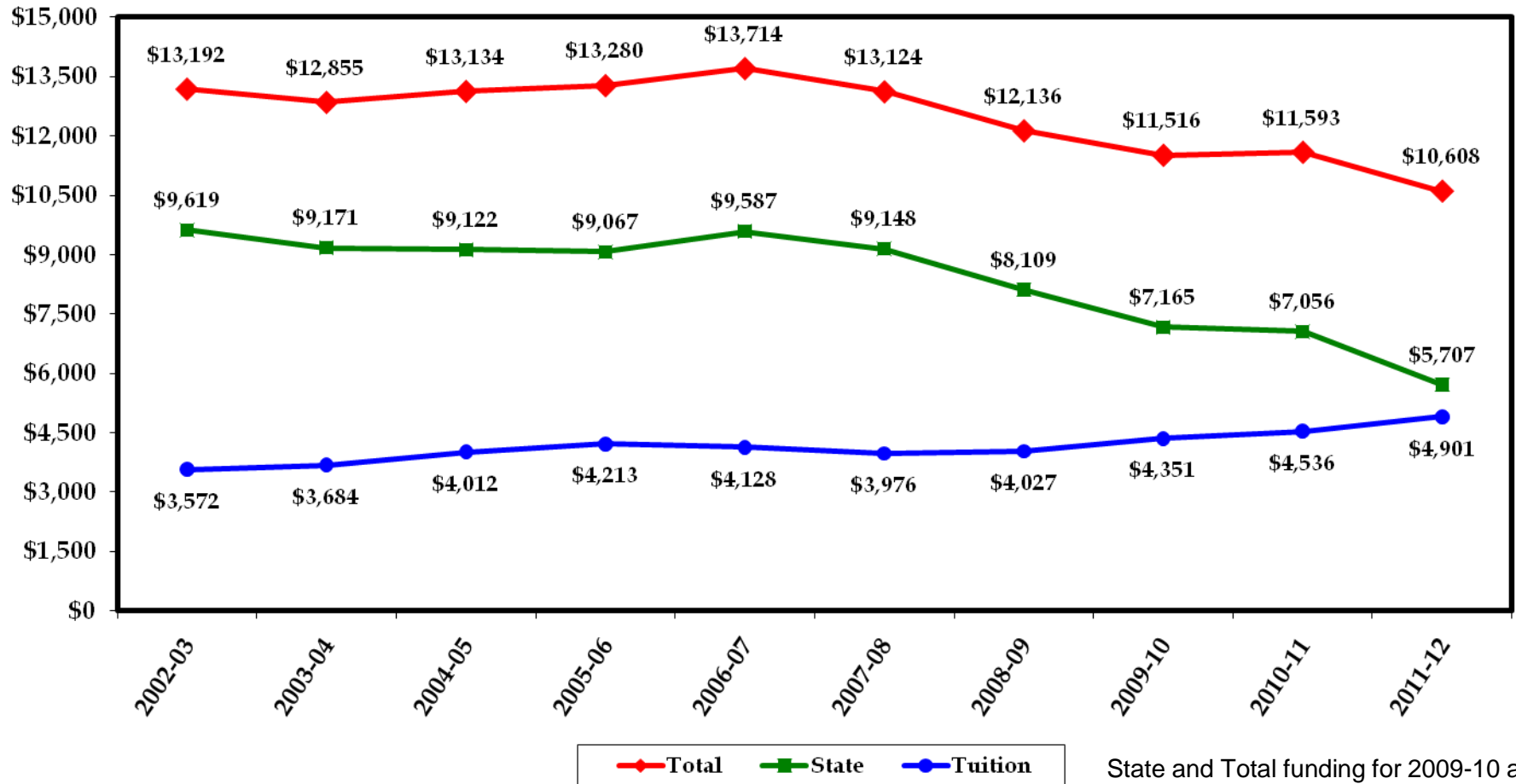
National Average – assumes a 7.1% annual increase.
SUS – assumes 15% tuition and 5% local fee increase.

SUS Total E&G State Funds - Returned to 2002-03 Appropriation Levels



STATE UNIVERSITY SYSTEM of FLORIDA
Board of Governors

E&G Funding per FTE Student



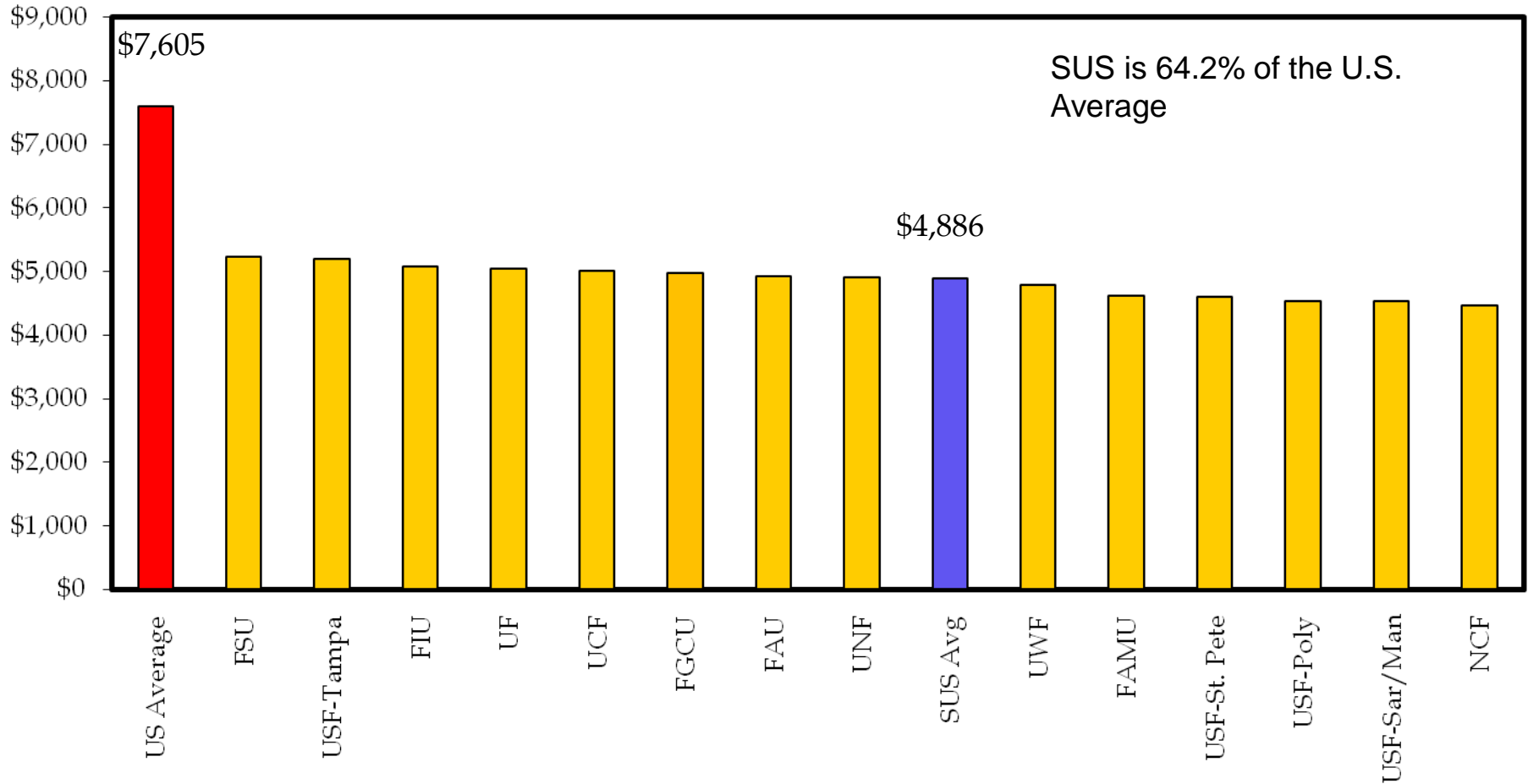
State and Total funding for 2009-10 and 2010-11 includes federal stimulus.

Adjusted for inflation.



STATE UNIVERSITY SYSTEM of FLORIDA
Board of Governors

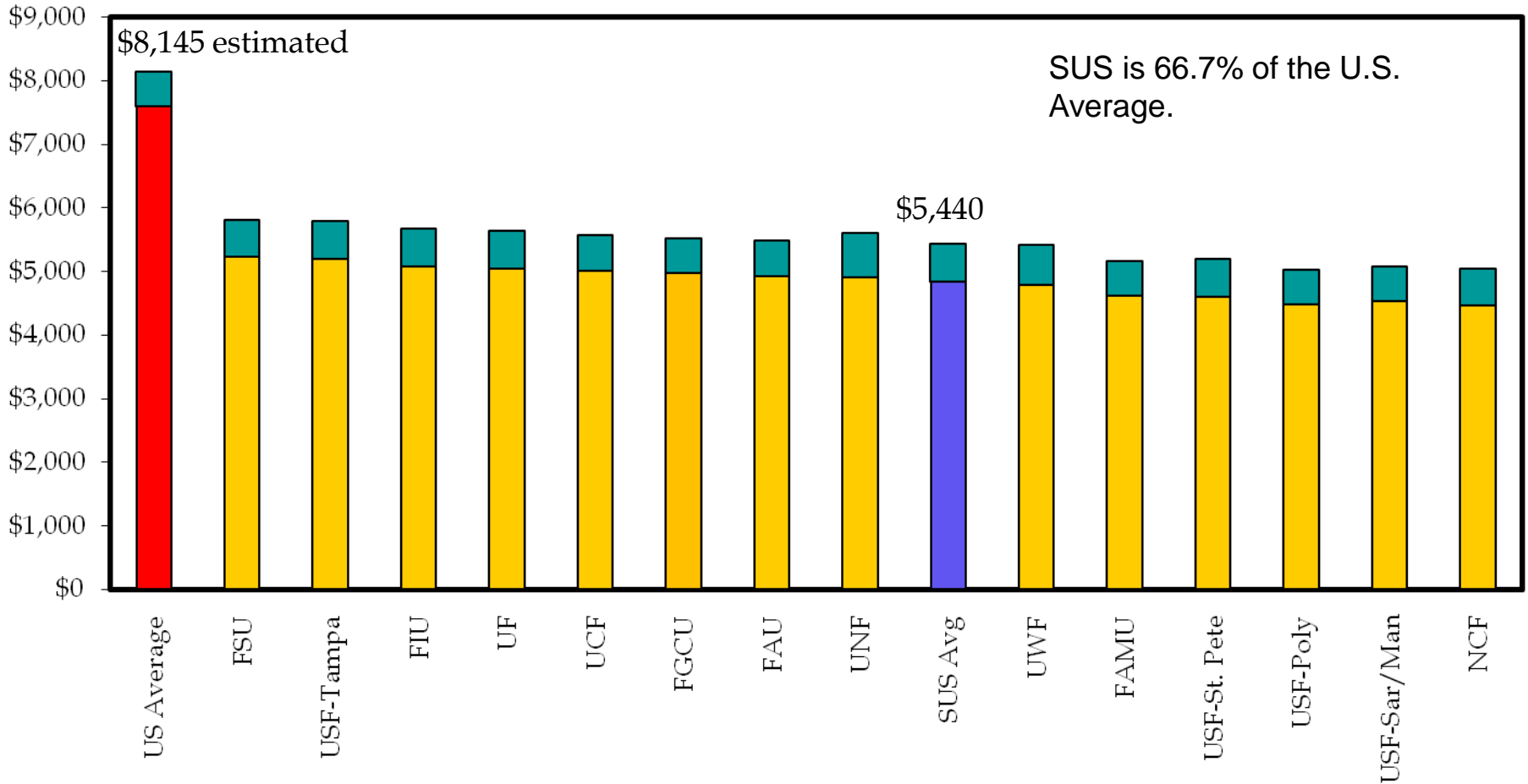
Undergraduate Tuition & Fees - SUS Compared to U.S. Average for 2010-11



STATE UNIVERSITY SYSTEM of FLORIDA
Board of Governors

U.S. Average from The College Board, Annual Survey of Colleges

Undergraduate Tuition & Fees - after increase in Tuition Differential - 2011-12 - Estimated



STATE UNIVERSITY SYSTEM of FLORIDA
Board of Governors

U.S. Average estimated at a 7.1% increase. The College Board, Annual Survey of Colleges

University Tuition Differential Requests

	2010-11 Differential	2011-12 Incremental Increase – 7%	Total 2011-12 Differential
FAMU	\$12.80	\$8.62	\$21.42
FAU	\$12.80	\$8.62	\$21.42
FGCU	\$12.80	\$8.62	\$21.42
FIU	\$22.00	\$10.00	\$32.00
FSU	\$22.00	\$10.00	\$32.00
NCF	\$12.80	\$8.62	\$21.42
UCF	\$15.88	\$9.08	\$24.96
UF	\$22.00	\$10.00	\$32.00
UNF	\$12.80	\$8.62	\$21.42
USF – Tampa	\$22.00	\$10.00	\$32.00
USF – St. Petersburg	\$12.80	\$8.62	\$21.42
USF – Sarasota/Manatee	\$12.80	\$8.62	\$21.42
USF - Polytechnic	\$12.80	\$8.62	\$21.42
UWF	\$12.80	\$8.62	\$21.42

