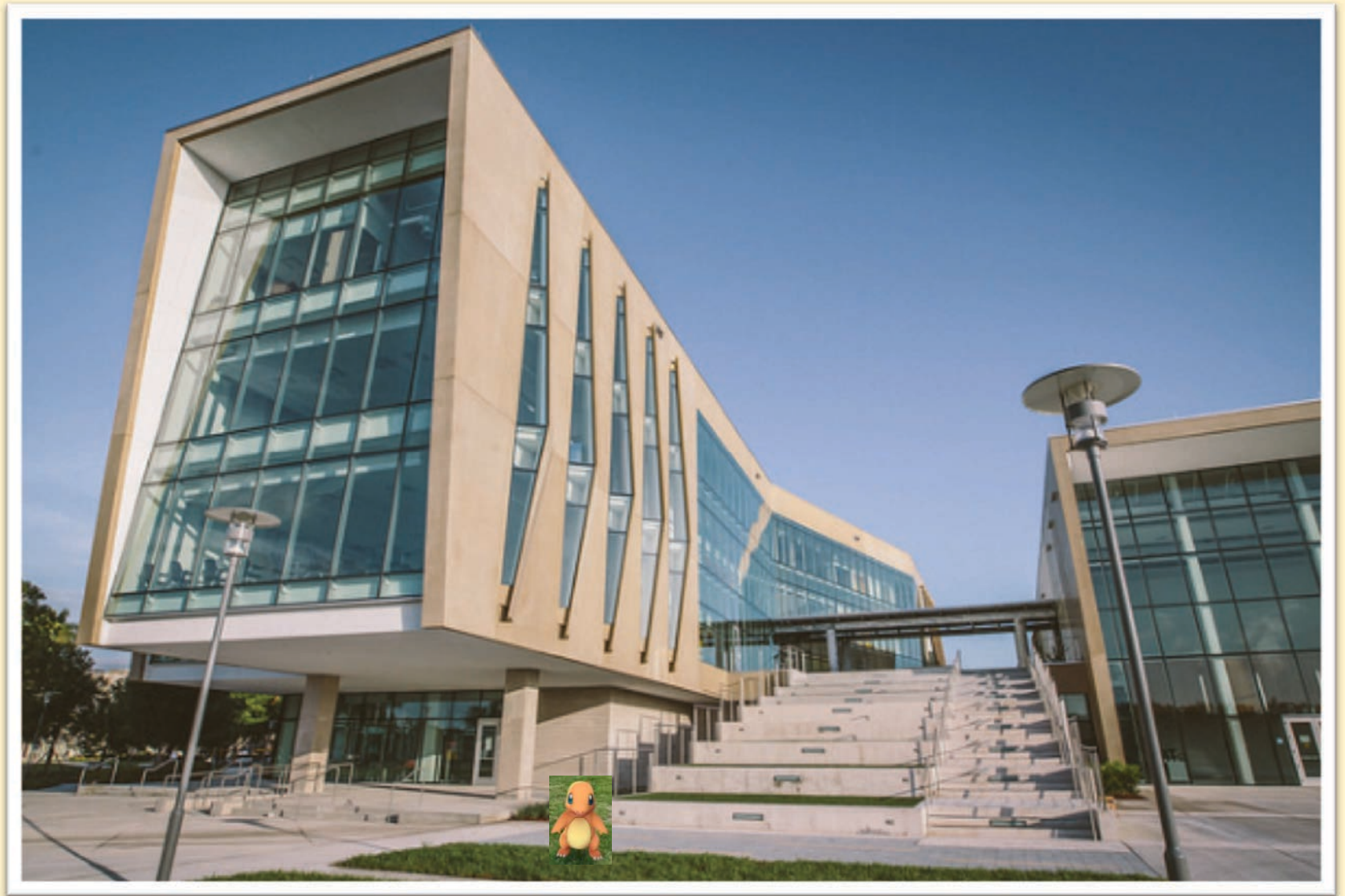


*FIU students think differently, go beyond what is expected.
Do something great with the opportunity they are given.*

Be Worlds Ahead



Student Academic Success Center



Biscayne Bay Campus



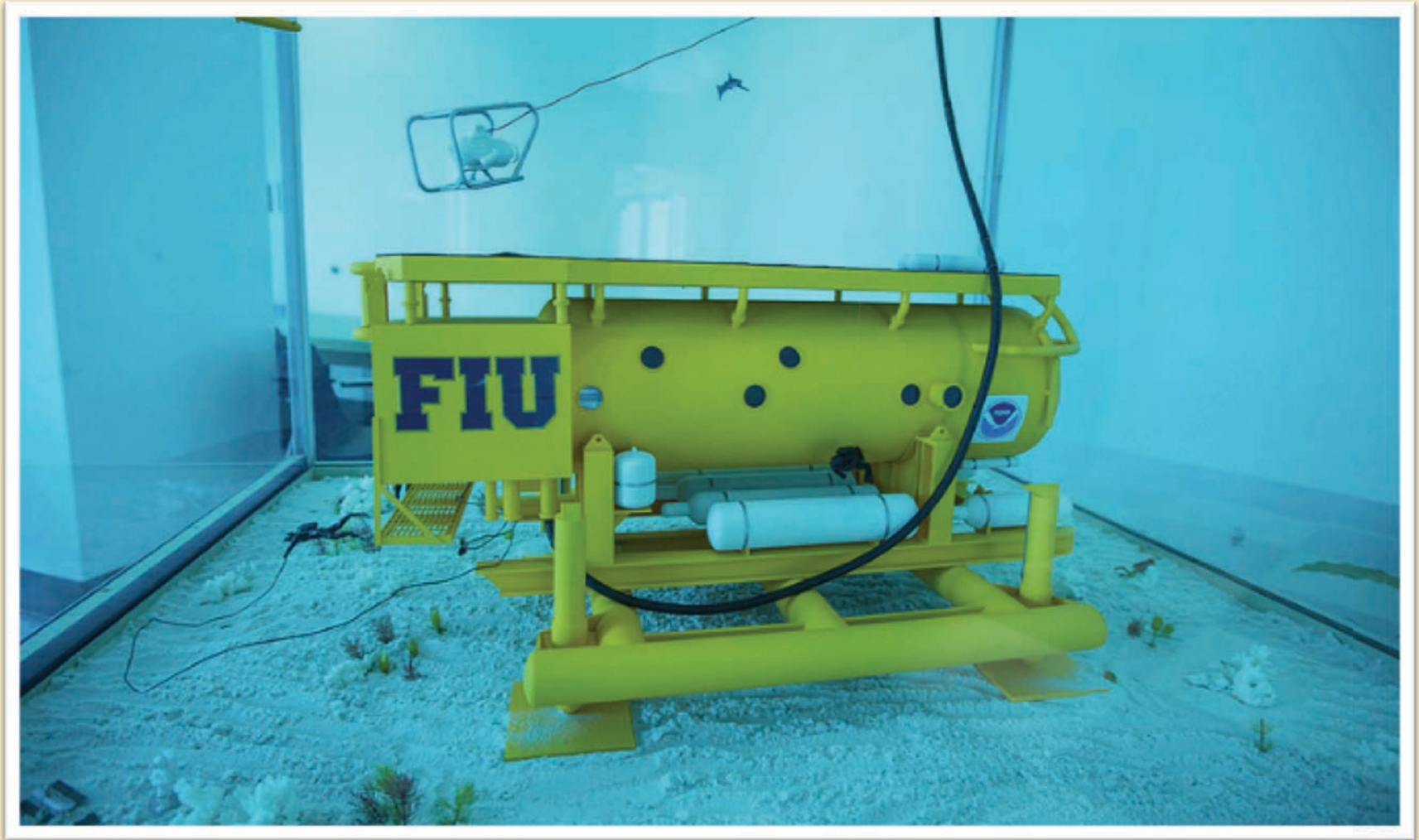
Wolfsonian-FIU Museum, Library and Research Center in the Art Deco District of Miami Beach



FIU@I-75



Medina Aquarius Program Florida Keys National Marine Sanctuary

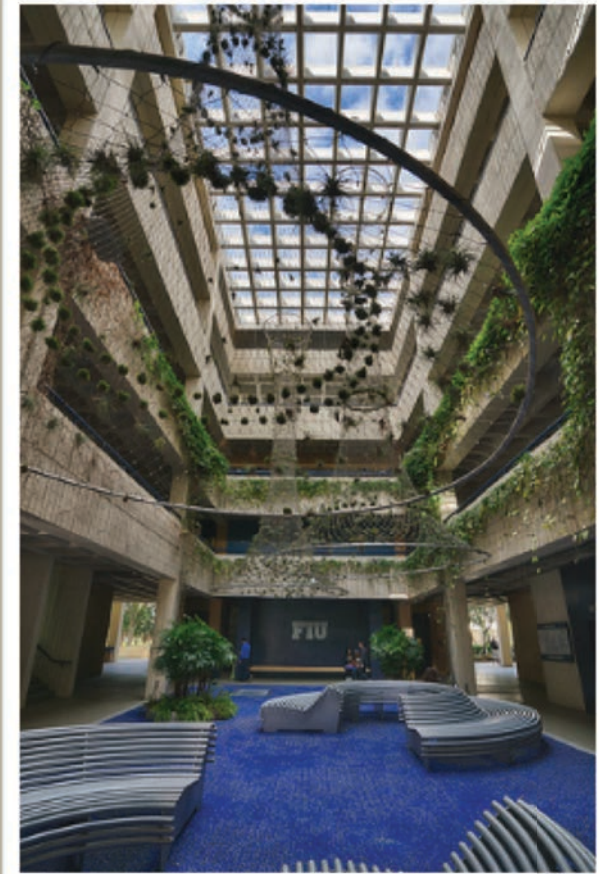
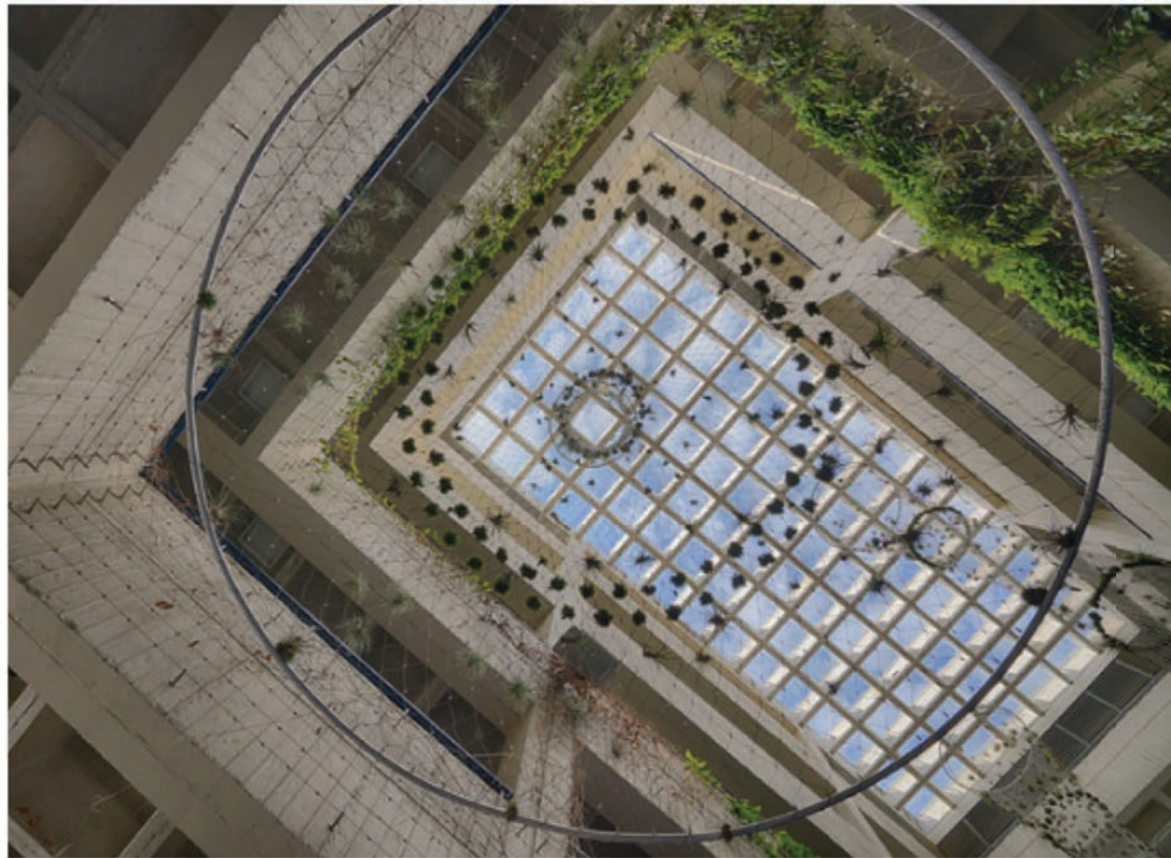


FIU and Tianjin University of Commerce



Sky Lounge

Popular hangout designed and built by FIU
Landscape Architecture faculty and students



Engineering & Computer Science



Parkview Residence Hall



Nicole Wertheim College of Nursing & Health Sciences



College of Communications, Architecture & the Arts



Steven J. Green School of International & Public Affairs



FIU Means Community Engagement



“At FIU we obsess on impact. We have the obligation to leave our community better than we found it, one student, one initiative at a time.”

FIU President Mark B. Rosenberg



FIU

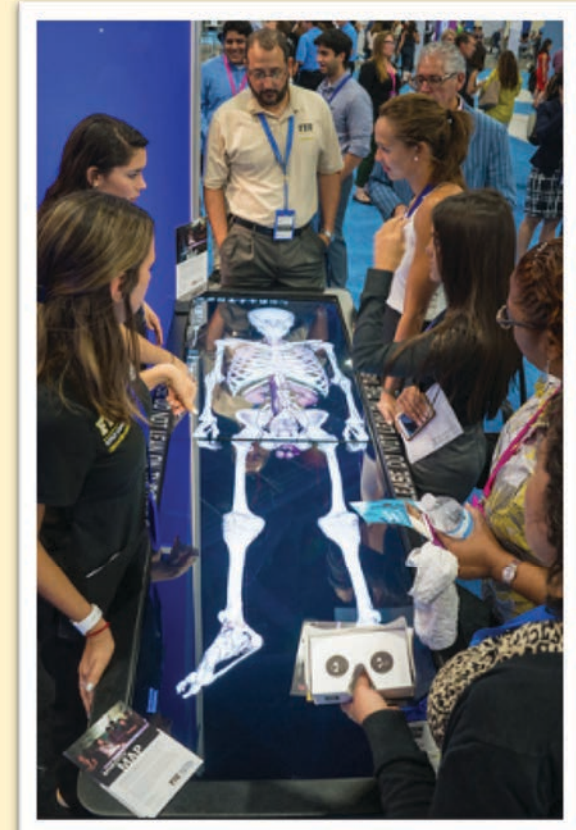
Green Family Foundation NeighborhoodHELP



What Problem do YOU Want to Solve?



Emerge Americas 2016



Opportunity for FIU students to connect, discover and be inspired by some of the world's top thought leaders in technology and innovation!

Panther Pride



FIU Swimming&Diving @FIUSwimDive - Feb 28

Back-to-Back Champs: #FIU Claims 2016
C-USA Swimming and Diving
Championship

Personalized Education Pathways

Personalized Educational Pathways allow students to choose the best-fit route to an undergraduate degree at FIU.

The admission requirements to each pathway are designed to provide access to a top tier research university in a supported environment to ensure students completion and success.



Meeting Minimum Admission Criteria

Admission to FIU is selective. Minimum criteria for Early Fall start, fall start and spring start are quantitative, based on inversely correlated high school GPA and SAT/ACT scores scales.

Early Fall start 2017				Fall 2017				Spring 2018			
GPA	SAT <i>Post March</i>	SAT <i>Pre March</i>	ACT	GPA	SAT <i>Post March</i>	SAT <i>Pre March</i>	ACT	GPA	SAT <i>Post March</i>	SAT <i>Pre March</i>	ACT
3.2	1140	1070	23	3.5	1220	1150	25	2.9	1070	990	21
3.3	1110	1030	22	3.6	1180	1110	24				
3.6+	1070	990	21	3.7	1140	1070	23				
				3.8+	1110	1030	22				

Must apply and be admitted by **November 1** to compete for academic scholarships

Supported Transition to Excellence Program (STEP)

- Students admitted to STEP will be provided with empowering support to promote success in and out of the classroom.
- Each term the student will be limited to a maximum number of credit hours and will be required to participate in at least one student success strategy.
- The first summer and fall of the program includes limiting participants to less than full time enrollment.
- For our need-base students, the Office of Financial Aid will leverage financial resources in a way that minimizes impact on the student's ability to afford college.
- Students who successfully complete the program by earning 30 academic credits and a 2.0 GPA after one year of enrollment (including summers) will receive a \$500 success grant to apply to their tuition costs during their sophomore year at FIU.

Connect4Success

Our FIU Connect4Success program enhances Florida's 2+2 Pathway to Success program. All students in the state of Florida are eligible to participate in Connect4Success. Students who complete their A.A. from a Florida college in three years or less will be granted automatic admission to FIU.

Option 1: Choosing (High School)

- Student Profile: High school student intending to transfer to FIU upon completion of the AA degree at an FCS institution.

Option 2: Opting-In (Enrolled in FCS)

- Student Profile: Enrolled FCS student with approximately 30+ credits earned; identified FIU as transfer institution through FCS procedures.

FIU's Golden Promise

FTIC, U.S. Citizens or Permanent Residents, who are Florida residents with a 0 EFC will have 100% of their tuition and fees covered by grants



FIU × Raise.me

Earn scholarships from Florida International University for each of your achievements during 9th-12th grade

Students Get Started *free*

Parents

Educators

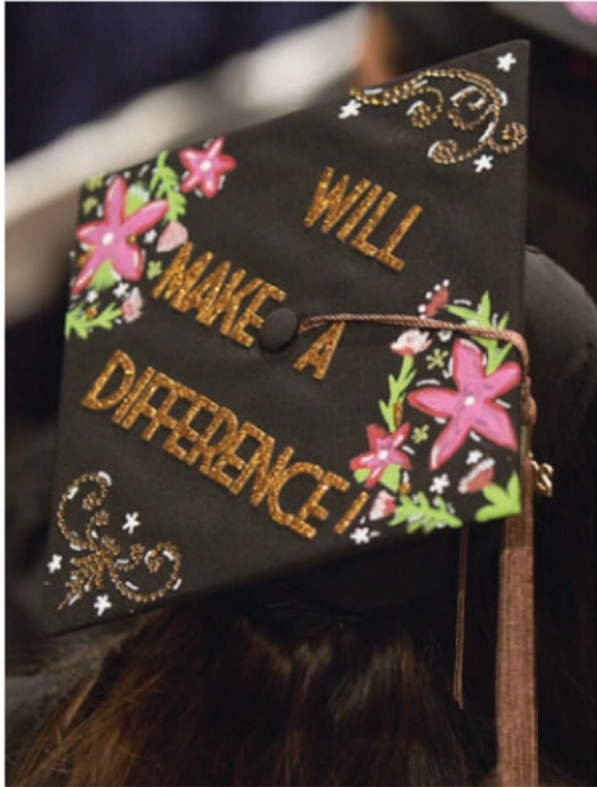
<https://www.raise.me/join/fiu>

FIU



Paola Gil @paogil19 · May 17

So happy and proud to be part of the FIU alumni now. Unforgettable moments
#FiuGrad #classof2016



OSO-CITY @OSOCITY · Aug 4

The Journey Doesn't start at the beginning, it begins at the end 🎓 #FIUGRAD