



Areas of Expertise

Ms. Emily Sikes, Vice Chancellor for Academic & Student Affairs

September 11, 2025

www.flbog.edu



Overview



Each state university will elevate areas of expertise & intentionally prioritize resources so that it will be the very best in those areas.

Differentiating & excelling in these areas will bolster the reputation of the System & Florida.

Purpose

- Bolster the success of acclaimed students, faculty, & research
- Establish world-class outcomes & goals
- Contribute to Florida's economic development

Framework

- Reflect quality outcomes that are measurable
- Areas that are existing strengths & what the university will be known for nationally

Goals

- Be recognized within Florida & nationally
- Develop shared Centers of Distinction to foster collaboration across the System

Institutional Selections



34 Areas of Expertise selected

11 sectors chosen



Most popular: Healthcare

7 universities



Construction
& Design



Healthcare



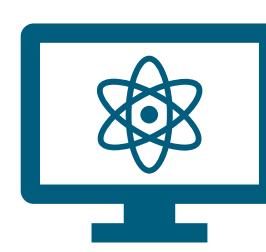
Artificial
Intelligence



Business
Innovation



Biological &
Earth Sciences



Computer
Sciences



Advanced
Materials



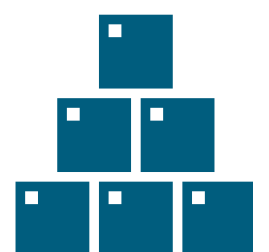
National &
Cyber
Security



Civics



Education



Supply Chain
Logistics



Health, Pharmacological Research, Allied Health Sciences, & Workforce Readiness

- Create a center of distinction in health excellence



Business Innovation in Supply Chain, Accounting, & Cyber Policy

- Improve targeted PBF metrics



Innovation in Architecture, Agricultural Engineering, & Environmental Design

- Grow targeted engineering & design program enrollment



Neuroscience

- Expand external research funding sources



Ocean Science & Engineering/Environmental Studies

- Expand faculty hiring & publications



Entrepreneurship

- Foster regional business partner relationships



The Water School

- Develop research & internship pathways



Health Span

- Expand healthcare-related enrollment & research



Resort, Golf, & Hospitality Management

- Grow community engagement & industry partnerships



Risk and Resilience Mitigation: Natural and Built Environment

- Establish & grow world-class research centers



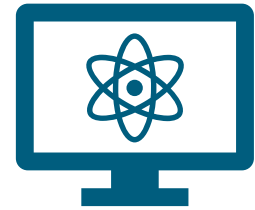
Health: Precision Imaging and Personalized Health

- Encourage hospital workforce partnerships



Economic Freedom

- Increase faculty recruitment & retention in target areas



Industry-Integrated STEM Education & Applied Research

- Optimize data-driven student recruitment & admissions



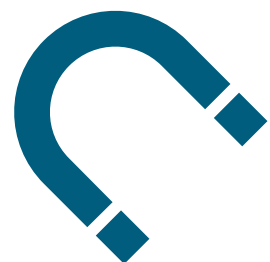
Industrial & Phosphate Research

- Expand patent & tech transfer opportunities



A Healthy Florida

- Develop FSU Health & associated institutes & centers



Advancing Materials

- Utilize National Laboratory for World-Class Research



A Resilient Future

- Increase faculty publications & research productivity

New College

Areas of Expertise



A.I. for Liberal Arts Learning, Research, and Innovation

- Curate AI coursework



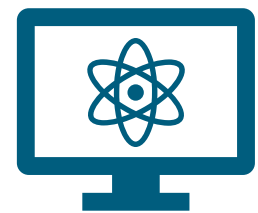
Economics and Finance

- Work with alumni resources for industry connections



Marine Sciences

- Expand student research & internship opportunities with local partners



Engineering & Computer Science

- Achieve a Top 25 Ranking in Engineering Rankings



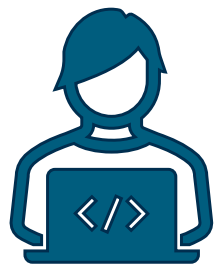
Immersive User Experiences

- Strengthen partnerships with local software & defense partners



Defense & National Security

- Expand collaborative research with SUS partners



AI & Applications

- Bolster relevant institute & center research activity



Hamilton School for Classical & Civic Education

- Pursue business partners & contributions to academic programs



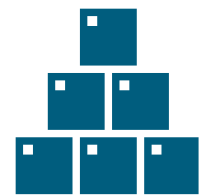
Neuroscience & Neuromedicine at UF Health

- Explore innovative approaches to AI applications



Experiential Learning

- Provide every student with an experiential learning opportunity



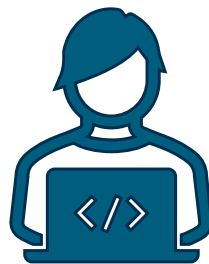
Supply Chain Innovation

- Rank as the Top Supply Chain/Logistics University



Molecular Medicine, Science, & Biology

- Grow Blue Ridge Medical Research Ranking



Applied Artificial Intelligence

- Bolster A.I. research productivity & publications



Human and Infrastructure Security

- Synergize existing research, defense, & academic resources



Public Archaeology & Community Heritage

- Collaborate on innovative projects through existing research centers



Computational Intelligence

- Boost computational degrees & certificates awarded



Cybersecurity

- Increase Cybersecurity publications, presentations, & grants

Next Steps



**September-
October**
Feedback on
Areas

**November
Board Meeting**
Approval of
Areas

June 2026
Updates in
Accountability
Plans



SUS 30

EXTRAORDINARY IMPACT



**STATE UNIVERSITY
SYSTEM OF FLORIDA**