



2025-2026 ALLOCATION SUMMARY and WORKPAPERS

EDUCATION AND GENERAL

State University System of Florida
Board of Governors

MEMORANDUM

TO: University Budget Officers

FROM: Roger Strickland *S. Roger Strickland, Jr.*
Director, University Budgets

DATE: September 17, 2025

Subject: **2025-2026 Allocation Summary and Work Papers**

The attached document is the 2025-2026 Allocation Summary and work papers that provide budgetary details for each university. The Governor received and signed the appropriations bill on June 30, 2025.

Copies of the Allocation Summary and work papers are being forwarded for your information. If you have questions, please contact me at 850-245-9064.

SRS/pt

c: Mr. William Fontaine, House
Mr. Tim Elwell, Senate
Ms. Sherry Clark, Office of the Governor

**STATE UNIVERSITY SYSTEM OF FLORIDA
2025-2026 ALLOCATION SUMMARY**

I. INTRODUCTION

The allocation of resources to the twelve universities and the seven special units has been developed in accordance with the 2025 General Appropriations Act (GAA) – Senate Bill 2500 (Chapter No. 2025-198, Laws of Florida). The Appendix contains relevant sections of the GAA, Implementing Legislation – Senate Bill 2502 (Chapter No. 2025-199 Laws of Florida), and other important information. It is the responsibility of each university board of trustees to assure compliance with legislative conditions and restrictions as they affect the budgets of their state university.

Appropriated funds for the State University System (SUS) are provided in the Education and General (E&G) budget entity. The 2025-2026 Allocation Summary is based on the 2024-2025 estimated expenditures reported as the base in the 2025-2026 Legislative Budget Request (LBR) plus any additional appropriations provided by the Legislature.

A. Appropriated Program Component

The 2025-2026 Allocation Summary was developed using the Grants and Aids (G/A) and Special Categories within the Education and General program component as follows:

<u>Program Component Title</u>	<u>Component #</u>
Education and General	03.05.01.00.00
<u>Grants & Aids</u>	<u>Category #</u>
1. Education and General	052310
2. FAMU-FSU College of Engineering	052312
3. Institute of Food and Agricultural Sciences – IFAS/UF	052315
4. UF Health Center - UF-HSC	052325
5. USF Medical Center - USF-HSC	052320
6. FSU Medical School - FSU-MS	052335
7. UCF Medical School – UCF-MS	052337
8. FIU Medical School – FIU-MS	052339
9. FAU Medical School – FAU-MS	052341
10. Nursing Education	052305
11. Moffitt Cancer Center Operations	050333

**STATE UNIVERSITY SYSTEM OF FLORIDA
2025-2026 ALLOCATION SUMMARY**

12. Student Financial Aid	052350
13. Institute for Human & Machine Cognition	052353
14. FL Postsecondary Comprehensive Transition Program - UCF	052351
15. Nursing Education	052305
16. FL Postsecondary Academic Library Network - FSU	052311
17. Lastinger Center for Learning - UF	052330

<u>Special Categories</u>	<u>Category #</u>
1. Enterprise Cybersecurity Resiliency – USF & FSU	100815
2. Risk Management Insurance	103241
3. Florida Center for Autism and Neurodevelopment - UF	103412
4. Community School Grant Program - UCF	104045
5. Facility Repairs Maintenance	140111

B. Traditional Program Components

Universities will develop their operating budgets by matching the allocated Grants and Aids and/or Special Category to traditional program components as follows:

Allocated

- Universities

Traditional

Instruction & Research
 Institutes & Research Center
 Academic Infrastructure Support
 Plant Operation & Maintenance
 Administrative Direction & Support Services
 Radio/TV
 Libraries
 Museums
 Student Services

**STATE UNIVERSITY SYSTEM OF FLORIDA
2025-2026 ALLOCATION SUMMARY**

- | | |
|--|---|
| 2. FAMU-FSU College of Engineering | Instruction & Research
Institutes & Research Centers
Academic Infrastructure Support Orgs
Plant Operation & Maintenance
Administrative Direction & Support Services
Radio/TV
Libraries
Museums
Student Services |
| 3. Institute of Food and Agricultural Sciences – IFAS/UF | Instruction & Research
Institutes & Research Centers
Academic Infrastructure Support Orgs
Plant Operation & Maintenance
Administrative Direction & Support Services
Extension |
| 4. UF Health Science Center - UF-HSC | Instruction & Research
Institutes & Research Centers
Plant Operation & Maintenance
Administrative Direction & Support Services
Libraries
Student Services |
| 5. USF Health Science Center - USF-HSC | Instruction & Research
Institutes & Research Centers
Academic Infrastructure Support Orgs
Plant Operation & Maintenance
Administrative Direction & Support Services
Libraries
Student Services
Allied Clinics |

**STATE UNIVERSITY SYSTEM OF FLORIDA
2025-2026 ALLOCATION SUMMARY**

- | | | |
|-----|---|---|
| 6. | FSU Medical School - FSU-MS | Instruction & Research
Plant Operation & Maintenance
Administrative Direction & Support Services
Libraries
Student Services |
| 7. | FIU Medical School – FIU-MS | Instruction & Research
Plant Operation & Maintenance
Administrative Direction & Support Services
Libraries
Student Services |
| 8. | UCF Medical School – UCF-MS | Instruction & Research
Plant Operation & Maintenance
Administrative Direction & Support Services
Libraries
Student Services |
| 9. | FAU Medical School – FAU-MS | Instruction & Research
Plant Operation & Maintenance
Administrative Direction & Support Services
Libraries
Student Services |
| 10. | Moffitt Cancer Center | Separate Entity |
| 11. | Student Financial Aid | Student Services |
| 12. | Institute of Human & Machine Cognition | Separate Entity |
| 13. | FSU/NWRDC - Florida Postsecondary Academic
Library Network | Auxiliary |

**STATE UNIVERSITY SYSTEM OF FLORIDA
2025-2026 ALLOCATION SUMMARY**

- | | |
|---|---|
| 14. Nursing Education | Instruction & Research
Institutes & Research Centers
Academic Infrastructure Support Orgs
Plant Operation & Maintenance
Administrative Direction & Support Services
Radio/TV
Libraries
Museums
Student Services |
| 15. Enterprise Cybersecurity Resiliency - USF & FSU | Instruction & Research
Institutes & Research Centers
Academic Infrastructure Support Orgs
Plant Operation & Maintenance
Administrative Direction & Support Services
Radio/TV
Libraries
Museums
Student Services |
| 16. Lastinger Center for Learning - UF | Institutes & Research Centers
Academic Infrastructure Support Orgs
Plant Operation & Maintenance
Administrative Direction & Support Services
Radio/TV
Libraries
Museums
Student Services |
| 17. University of Florida - Center for Autism
and Neurodevelopment | Institutes & Research Centers |

**STATE UNIVERSITY SYSTEM OF FLORIDA
2025-2026 ALLOCATION SUMMARY**

II. ALLOCATION GUIDANCE

A. Issues Impacting All Institutions

1. Student Tuition and Fee Charges

The 2025 Legislature did not recommend a base undergraduate student tuition increase; therefore, tuition will remain at \$105.07 per credit hour as required by s. 1009.24(4)(a), Florida Statutes.

Section 1009.24, F.S., requires the Board of Governors to establish tuition for graduate and professional programs and out-of-state fees for all programs. Each state university is required to publicly notice any proposal to change tuition or fees at least 28 days before being considered at a university board of trustees meeting.

On June 18, 2025, the Board of Governors authorized Florida's public universities to increase out-of-state fees for undergraduate, graduate, and professional programs by up to 10% this fall and up to 15% for the fall of 2026. The board of trustees at each university retains the right to determine how much to raise the fees, if at all, and under the requirements, if universities increase out-of-state enrollment, they must also increase in-state enrollment proportionately.

Additionally, proviso language states that the general revenue funding provided to each university is contingent upon each university complying with the tuition and fee policies established in the proviso language and Part II of section 1009, Florida Statutes. Funds appropriated to a specific university entity shall not be affected by the failure of another university entity to comply with this provision.

2. Additional fee requirements

Pursuant to Board Regulation 7.001(10), each student enrolled in the same undergraduate college credit course more than twice shall be assessed a total of \$261.06 per student credit hour charge in addition to the traditional tuition and fees charged per student. This amount is an increase of \$12.54 per student credit hour from the prior fiscal year. These college credit hours shall not be included in calculations of full-time equivalent enrollments for state funding purposes. Universities may make exceptions to this provision for individualized elective coursework, courses repeated due to the requirements of a major, and courses that are intended to continue over multiple semesters. The amount the student pays through base tuition plus the repeat course fee makes up the full cost per credit hour.

3. Student tuition / other revenue projections

For fiscal year 2025-26, section 1011.4106, Florida Statutes, allows universities to expend tuition and fees collected during the 2025-26 fiscal year and carried forward from the prior fiscal year and deposited in local accounts. Tuition and fee revenues may be expended from local accounts according to the tuition and fees policies established in Part II of section 1009, Florida Statutes.

**STATE UNIVERSITY SYSTEM OF FLORIDA
2025-2026 ALLOCATION SUMMARY**

B. Cost-to-Continue/Base Budget Programs

1. *Technical Transfer Adjustments*

Technical adjustments between main campuses, branch campuses, and medical schools are needed to support activities such as, but not limited to, plant operations and maintenance adjustments, health insurance adjustments, and other operational and administrative adjustments required by the receiving entity.

C. Performance Funding

1. *Performance-Based Incentives Funding - \$645 M*

The Legislature provided additional support for Florida's higher education system by allocating \$645 M in university performance funding for the 2025-26 fiscal year. This total consists of two components: an investment of \$350 M in non-recurring incentive funds for FY 2025-26 and a reallocation of institutional base funding of \$295 M in recurring funds. Allocation of these funds will be based on the maximum number of excellence or improvement points achieved using 2025 Accountability Plan data.

D. University Initiatives / Medical School Initiatives

1. *Incentives for Programs of Strategic Emphasis - \$18.5 M*

Funding for tuition and fee waivers in twelve Programs of Strategic Emphasis has been provided in FY 2025-26 for those eligible for waivers pursuant to section 1009.26, Florida Statutes. Funds shall be distributed for waivers provided during the fall, spring, and then summer academic terms.

2. *UF – Lastinger Center for Learning - \$50.2 M*

General Revenue funds are allocated to the University of Florida's Lastinger Center for Learning to support the development and implementation of statewide initiatives to support early learning coalitions, school districts, and schools in improving student achievement in reading and mathematics as provided for in section 1004.561, Florida Statutes.

3. *Nursing Education - \$46 M*

Forty million is provided to universities to reward performance and excellence among nursing programs for Prepping Institutions, Programs, Employers, and Learners through Incentives for Nursing Education (PIPELINE). The remaining \$6 M supports Linking Industry to Nursing Education (LINE) partnership funding between universities and healthcare providers.

**STATE UNIVERSITY SYSTEM OF FLORIDA
2025-2026 ALLOCATION SUMMARY**

4. *USF – Enterprise Cybersecurity Resiliency - \$36 M*

Ten million dollars in funds are provided to the Florida Center for Cybersecurity at the University of South Florida (USF) and will be used to position Florida as a national leader in cybersecurity and its related workforce through education, research, and community engagement. \$500,000 in recurring funds will be used to operate and maintain a Cyber Attack and Simulation Range, which provides training and testing in a simulated environment. The Cybersecurity Center will also partner with our military to help with homeland security cyber defense. \$25 M is also provided to USF to assist in the creation of jobs in the cybersecurity industry and build upon the existing cybersecurity workforce. From these funds, \$409 K is provided to the Northwest Regional Data Center (NWRDC) at Florida State University for cloud storage and logging. These functions were previously performed through Enterprise Cybersecurity Resiliency within the Department of Management Services.

5. *UF College of Medicine – Florida Center for Autism and Neurodevelopment - \$10 M*

Ten million dollars is provided to the Florida Center for Autism and Neurodevelopment within the University of Florida College of Medicine to develop and implement the programs and services pursuant to section 1004.551, Florida Statutes. These funds are for costs associated with the center's role as the statewide coordinating body, administrator, and fiscal agent for these programs. The remaining funds shall be used by the center to support and implement various programs established in sections 1003.5711, 1003.5712, and 1004.551, Florida Statutes, for Fiscal Year 2025-2026 based on actual participation and demonstrated need.

E. Fixed Capital Outlay

The Legislature also appropriated \$758,333 in nonrecurring Fixed Capital Outlay funds for the following projects:

1. Jewish Life on College Campuses (FSU): Physical and Cultural Safety - \$170,000 (HF 2318)
2. Jewish Life on College Campuses (UF) - Physical and Cultural Safety - \$175,000 (SF 1508 & HF 2318)
3. U Matter Program Expansion - \$333,333 (SF 2141) (HF 3492)
4. Jewish Life on College Campuses (USF): Physical and Cultural Safety - \$80,000 (SF 1681 & HF 3321)

**STATE UNIVERSITY SYSTEM OF FLORIDA
2025-2026 ALLOCATION SUMMARY**

F. Recurring Projects

The following recurring projects were appropriated by the Legislature for fiscal year 2025-2026:

1. FIU – Adam Smith Center for Economic Freedom - \$15 M
2. FIU Medical School - Neuroscience Centers of Florida Foundation - \$1.5 M
3. FSU – Florida Institute for Child Welfare - \$10 M
4. FSU – Florida Center for Reading Research - \$250,000
5. NCF – Operational Enhancements - \$10 M
6. UCF Medical School - Crohn's and Colitis Research - \$337,000
7. UF – Hamilton Center for Classical and Civic Education - \$10 M
8. UF-IFAS – Animal Agriculture Industry Science & Technology - \$2.2 M
9. UF-IFAS – Cervidae Disease Research - \$2 M
10. UF-IFAS – Florida Shellfish Aquaculture - \$250,000
11. UF-IFAS – Forestry Education - \$1.1 M
12. UF-IFAS – Statewide Water Budget Data Analytics Pilot Project w/DEP - \$1.4 M
13. USF - Florida Center for Nursing - \$5 M
14. USF Medical Center – Center for Neuromusculoskeletal Research - \$300,000
15. USF Medical Center – Veteran PTSD Study - \$125,000
16. USF Medical Center – Veteran PTSD & Traumatic Brain Injury Study - \$250,000
17. USF Medical Center – Veteran Service Center - \$175,000

III. FISCAL GUIDELINES FOR 2025-2026 APPROPRIATIONS

Funds appropriated for the 2025-2026 fiscal year have been allocated for the development of operating budgets in accordance with the guidelines outlined below. The conditions and restrictions placed upon these appropriations by proviso language in the 2025 GAA and by other statutory provisions will guide the universities in the development and submission of their 2025-2026 operating budgets.

For FY 2025-26, there are several changes to the employer contribution rates. Pursuant to Senate Bill 7022 (Chapter No. 2025-205, Laws of Florida), the following changes are effective July 1, 2025:

- Regular Class – FRS costs increase from 6.73% to 7.10%. Unfunded Actuarial Liability (UAL) costs for regular class members will increase from 4.84% to 4.87%.
- Special Risk Class – FRS costs increase from 18.66% to 20.10%. UAL increases from 12.07% to 13.03%.
- Senior Management Service Class – FRS costs increase from 8.56% to 8.73%. UAL decreases from 23.90% to 22.45%.

STATE UNIVERSITY SYSTEM OF FLORIDA 2025-2026 ALLOCATION SUMMARY

- DROP – FRS costs increase from 8.49% to 9.37%. UAL increases from 10.64% to 10.65%.
- Retiree Health Insurance Subsidy for all classes remains at 2.00%.

When administered funding provided for **Casualty Insurance Premiums adjustments** is released by the Governor's Office to the Florida Department of Education (FDOE), the FDOE will send these funds directly to the universities as directed by the Board of Governors' Budget Office. Each university will be responsible for submitting payment to the Division of Insurance based on invoices received from the Division of Risk Management.

A. Prior-Year Reconciliation

The starting point of each year's allocation is the prior-year base, which incorporates permanent budget amendments made during the fiscal year. Near the end of each fiscal year, the Board Budget Office establishes a cut-off date and amendment number that will represent the base and starting point for the next year's allocation process. This year, the base was established prior to any amendments; therefore, the initial 2024-2025 allocation plus permanent 2024-2025 amendments comprise the base, which is the 2025-2026 Estimated Expenditures. The "Prior-Year Reconciliation" section of the allocation summary document contains the specific transactions.

B. Appropriation Category / Disbursements

The Board of Governors' Budget Office accounts for the allocation and expenditure of Grants and Aids appropriations by appropriated program component and traditional expenditure category. Universities will continue to receive general revenue disbursements from the Florida Department of Education via electronic funds transfer around the 5th and 20th of each month.

C. Proviso Language

Details of selected proviso language, including certain items that require special instructions, are as follows:

"Funds in Specific Appropriations 9 through 13 and 145 through 163 are provided as grants and aids to support the operation of state university entities. Funds provided to each university entity are contingent upon that university following the provisions of sections 1000 through 1013, Florida Statutes, which relate to state universities. Any withholding of funds pursuant to this provision shall be subject to the approval of the Legislative Budget Commission."

Special Instructions: None

STATE UNIVERSITY SYSTEM OF FLORIDA 2025-2026 ALLOCATION SUMMARY

“Each university board of trustees is given flexibility to make necessary adjustments to its operating budget. If any board reduces individual programs or projects within the university by more than 10 percent during the 2025-2026 fiscal year, written notification shall be made to the Executive Office of the Governor, the President of the Senate, the Speaker of the House of Representatives, and the Board of Governors.”

Special Instructions: None

“From the funds provided in Specific Appropriation 147, \$645,000,000 is provided for State University System Performance-based Incentives. The funds available for allocation to the universities based on the performance funding model shall consist of the state's investment of \$350,000,000 in non-recurring funds, plus an institutional investment of \$295,000,000 in recurring funds to be redistributed from the base funding of the State University System. The Board of Governors shall allocate all appropriated funds for State University System Performance-based Incentives based on the requirements in section 1001.92, Florida Statutes.”

Note: Funds were allocated by the Board of Governors on July 11, 2025

“From the funds in Specific Appropriation 158, the Board of Governors Foundation shall distribute \$335,000 in recurring funds to state universities for Johnson Scholarships in accordance with section 1009.74, Florida Statutes. Sixty percent of such funds shall be released at the beginning of the first quarter and the balance at the beginning of the third quarter.”

Special Instructions: None

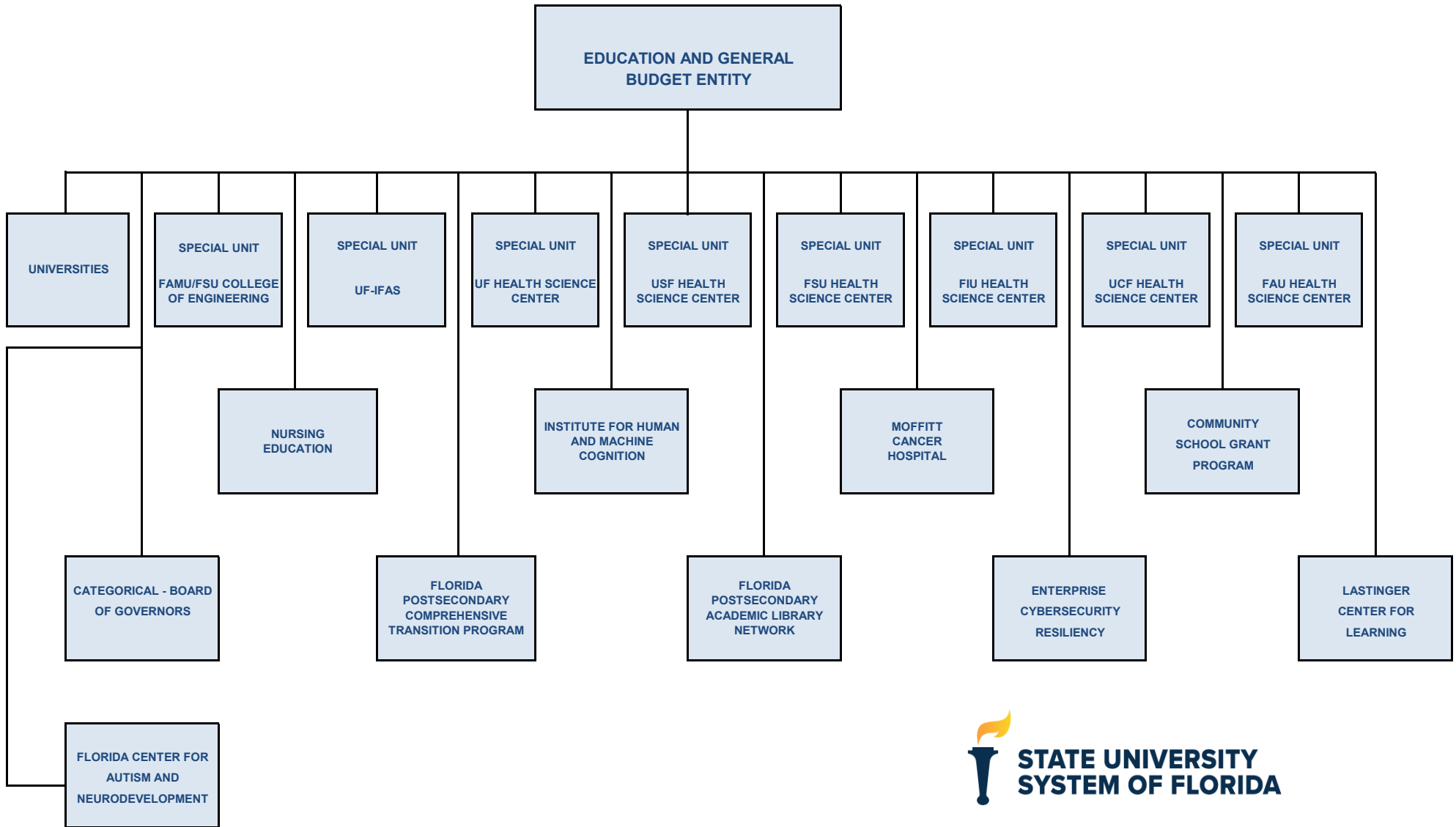
D. Operating budgets and Carryforward Spending Plan

Each university and special unit shall furnish data files that include their approved operating budgets and an Education & General (E&G) Carryforward Spending Plan to the Board of Governors' Budget Office. From the data files, budgets will be published and forwarded for consideration by the Board of Governors and for informational purposes to the Executive Office of the Governor and the House and Senate Appropriations Committees. Questions regarding the preparation of university operating budgets should be directed to the Board Budget Office.

As a result of the appropriation of Grants & Aid, the instructions for the development of the 2025-2026 operating budgets by the universities will continue to allow considerable flexibility. The operating budgets should continue to reflect the universities' anticipated expenditures by traditional program components.

**STATE UNIVERSITY SYSTEM OF FLORIDA
2025-2026 ALLOCATION SUMMARY**

Previously, the annual operating budget process extracted university data from the Florida Accounting and Information Resource (FLAIR) system for both the history year and the current (estimated) year. All state universities officially left the FLAIR system on July 1, 2004. University operating budget data shall continue to be submitted in a format that will allow the Board of Governors' Office of Data Analytics and Budget Office to generate comparable data reporting pursuant to Board Regulation 9.007. The data contained in the Salary Category Detail File may be used to support the annual operating budgets. The university operating budgets are to be submitted to the Chancellor by August 15, 2025.



2025-2026
ALLOCATION WORKPAPERS
EDUCATION AND GENERAL
UNIVERSITY/SPECIAL UNITS
APPROPRIATED PROGRAM COMPONENT
GRANTS & AIDS/SPECIAL CATEGORY FUND



OPERATING BUDGET
EDUCATION AND GENERAL
UNIVERSITY/SPECIAL UNITS
TRADITIONAL PROGRAM COMPONENT
TRADITIONAL CATEGORY FUND

State University System of Florida
General Appropriations Act
University Detail by Grant & Aids / Special Category
2025-2026

	UF	FSU	FAMU	USF	FAU	UWF
G/A - Education & General						
General Revenue Fund	\$ 561,746,517	\$ 526,306,782	\$ 95,600,972	\$ 311,864,696	\$ 140,161,139	\$ 85,435,682
Educational Enhancement TF	\$ 112,555,070	\$ 93,976,008	\$ 35,465,109	\$ 90,634,496	\$ 49,940,241	\$ 18,865,269
Phosphate Research TF	\$ -	\$ -	\$ -	\$ -	\$ -	\$ -
Total G/A - Educational & General	\$ 674,301,587	\$ 620,282,790	\$ 131,066,081	\$ 402,499,192	\$ 190,101,380	\$ 104,300,951
G/A - Nursing Education						
General Revenue Fund	\$ 4,341,261	\$ 2,885,871	\$ 1,287,929	\$ 6,298,131	\$ 3,462,652	\$ 3,809,453
G/A - Student Financial Assistance						
General Revenue Fund	\$ 1,737,381	\$ 1,467,667	\$ 624,417	\$ 801,368	\$ 399,658	\$ 157,766
S/C - Risk Management Insurance						
General Revenue Fund	\$ 3,366,629	\$ 2,380,080	\$ 1,810,357	\$ 1,836,244	\$ 1,685,539	\$ 634,874
Phosphate Research TF	\$ -	\$ -	\$ -	\$ -	\$ -	\$ -
Total S/C - Risk Management Insurance	\$ 3,366,629	\$ 2,380,080	\$ 1,810,357	\$ 1,836,244	\$ 1,685,539	\$ 634,874
Grand Total						
General Revenue	\$ 571,191,788	\$ 533,040,400	\$ 99,323,675	\$ 320,800,439	\$ 145,708,988	\$ 90,037,775
Educational Enhancement TF	\$ 112,555,070	\$ 93,976,008	\$ 35,465,109	\$ 90,634,496	\$ 49,940,241	\$ 18,865,269
Phosphate Research TF	\$ -	\$ -	\$ -	\$ -	\$ -	\$ -
Total All Funds	\$ 683,746,858	\$ 627,016,408	\$ 134,788,784	\$ 411,434,935	\$ 195,649,229	\$ 108,903,044

State University System of Florida
General Appropriations Act
University Detail by Grants & Aids / Special Category
2025-2026

	UCF		FIU		UNF		FGCU		NCF		FPU		Other and Unallocated	UNIVERSITIES TOTAL
G/A - Educational & General														
General Revenue Fund	\$	253,699,680	\$	287,216,370	\$	106,379,724	\$	104,265,017	\$	59,759,455	\$	54,223,634	\$667,235,299	\$3,253,894,967
Educational Enhancement TF	\$	86,143,050	\$	73,723,382	\$	30,655,715	\$	17,086,697	\$	2,497,847	\$	682,893		\$612,225,777
Phosphate Research TF											\$	5,234,908		\$5,234,908
Total G/A - Educational & General	\$	339,842,730	\$	360,939,752	\$	137,035,439	\$	121,351,714	\$	62,257,302	\$	60,141,435	\$ 667,235,299	\$ 3,871,355,652
G/A - Nursing Education														
General Revenue Fund	\$	7,361,168	\$	4,305,897	\$	3,725,062	\$	2,522,576	\$	-	\$	-	\$ 6,000,000	\$46,000,000
G/A - Student Financial Assistance														
General Revenue Fund	\$	858,405	\$	540,666	\$	200,570	\$	98,073	\$	204,407	\$	50,000	\$ 335,000	\$7,475,378
S/C - Risk Management Insurance														
General Revenue Fund	\$	2,607,445	\$	2,077,776	\$	770,180	\$	639,936	\$	246,958	\$	74,448	\$ -	\$18,130,466
Phosphate Research TF	\$	-	\$	-	\$	-	\$	-	\$	-	\$	2,180	\$ -	\$ 2,180
Total S/C - Risk Management Insurance	\$	2,607,445	\$	2,077,776	\$	770,180	\$	639,936	\$	246,958	\$	76,628	\$ -	\$ 18,132,646
Grand Total														
General Revenue	\$	264,526,698	\$	294,140,709	\$	111,075,536	\$	107,525,602	\$	60,210,820	\$	54,348,082	\$ 673,570,299	\$3,325,500,811
Educational Enhancement TF	\$	86,143,050	\$	73,723,382	\$	30,655,715	\$	17,086,697	\$	2,497,847	\$	682,893	\$ -	\$612,225,777
Phosphate Research TF	\$	-	\$	-	\$	-	\$	-	\$	-	\$	5,237,088	\$ -	\$5,237,088
Total All Funds	\$	350,669,748	\$	367,864,091	\$	141,731,251	\$	124,612,299	\$	62,708,667	\$	60,268,063	\$ 673,570,299	\$ 3,942,963,676

State University System of Florida
General Appropriations Act
University Detail by Grants & Aids /Special Category
2025-2026

	University Totals	FAMU - FSU COE	UF-IFAS	UF-HSC	USF-HSC	FSU-MS	UCF-MS	FIU-MS	FAU-MS	Special Units Totals
G/A - Education & General										
General Revenue Fund	\$ 3,253,894,967	\$ -	\$ -	\$ -	\$ -	\$ -	\$ -	\$ -	\$ -	-
Educational Enhancement TF	\$ 612,225,777	\$ -	\$ -	\$ -	\$ -	\$ -	\$ -	\$ -	\$ -	-
Phosphate Research TF	\$ 5,234,908	\$ -	\$ -	\$ -	\$ -	\$ -	\$ -	\$ -	\$ -	-
Total G/A - Educational & General	\$ 3,871,355,652	\$ -	\$ -	\$ -	\$ -	\$ -	\$ -	\$ -	\$ -	-
G/A - FAMU-FSU College of Engineering										
General Revenue Fund		\$ 21,256,475								\$ 21,256,475
Total G/A - FAMU-FSU College of Engineering	\$ -	\$ 21,256,475	\$ -	\$ -	\$ -	\$ -	\$ -	\$ -	\$ -	21,256,475
G/A - IFAS										
General Revenue Fund			\$ 189,966,502							\$ 189,966,502
Educational Enhancement TF			\$ 17,079,571							\$ 17,079,571
Total G/A - IFAS	\$ -	\$ -	\$ 207,046,073	\$ -	\$ -	\$ -	\$ -	\$ -	\$ -	207,046,073
G/A - UF Health Center										
General Revenue Fund				\$ 134,796,162						\$ 134,796,162
Educational Enhancement TF				\$ 7,898,617						\$ 7,898,617
Total G/A - UF Health Center	\$ -	\$ -	\$ -	\$ 142,694,779	\$ -	\$ -	\$ -	\$ -	\$ -	142,694,779
G/A - USF Medical Center										
General Revenue Fund					\$ 126,416,839					\$ 126,416,839
Educational Enhancement TF					\$ 12,740,542					\$ 12,740,542
Total G/A - USF Medical Center	\$ -	\$ -	\$ -	\$ -	\$ 139,157,381	\$ -	\$ -	\$ -	\$ -	139,157,381
G/A - FSU Medical School										
General Revenue Fund						\$ 35,359,083				\$ 35,359,083
Educational Enhancement TF						\$ 824,574				\$ 824,574
Total G/A - FSU Medical School	\$ -	\$ -	\$ -	\$ -	\$ -	\$ 36,183,657	\$ -	\$ -	\$ -	36,183,657
ALG - UCF Medical School										
General Revenue Fund							\$ 31,814,672			\$ 31,814,672
Total ALG - UCF Medical School	\$ -	\$ -	\$ -	\$ -	\$ -	\$ -	\$ 31,814,672	\$ -	\$ -	31,814,672
ALG - FIU Medical School										
General Revenue Fund								\$ 33,153,594		\$ 33,153,594
Total ALG - FIU Medical School	\$ -	\$ -	\$ -	\$ -	\$ -	\$ -	\$ -	\$ 33,153,594	\$ -	33,153,594

State University System of Florida
General Appropriations Act
University Detail by Grants & Aids /Special Category
2025-2026

	University Totals	FAMU - FSU COE	UF-IFAS	UF-HSC	USF-HSC	FSU-MS	UCF-MS	FIU-MS	FAU-MS	Special Units Totals
ALG - FAU Medical School										
General Revenue Fund									\$ 22,197,039	\$ 22,197,039
Total ALG - FAU Medical School	\$ -	\$ -	\$ -	\$ -	\$ -	\$ -	\$ -	\$ -	\$ 22,197,039	\$ 22,197,039
G/A - Nursing Education										
General Revenue Fund	\$ 46,000,000	\$ -	\$ -	\$ -	\$ -	\$ -	\$ -	\$ -	\$ -	-
G/A - Student Financial Assistance										
General Revenue Fund	\$ 7,475,378	\$ -	\$ -	\$ -	\$ -	\$ -	\$ -	\$ -	\$ -	-
S/C - Risk Management Insurance										
General Revenue Fund	\$ 18,130,466	\$ 30,675	\$ 3,952,309	\$ 1,835,826	\$ 434,561	\$ 381,911	\$ -	\$ 70,948	\$ -	\$ 6,706,230
Phosphate Research TF	\$ 2,180	\$ -	\$ -	\$ -	\$ -	\$ -	\$ -	\$ -	\$ -	-
Total S/C - Risk Management Ins.	\$ 18,132,646	\$ 30,675	\$ 3,952,309	\$ 1,835,826	\$ 434,561	\$ 381,911	\$ -	\$ 70,948	\$ -	\$ 6,706,230
Grand Total										
General Revenue	\$ 3,325,500,811	\$ 21,287,150	\$ 193,918,811	\$ 136,631,988	\$ 126,851,400	\$ 35,740,994	\$ 31,814,672	\$ 33,224,542	\$ 22,197,039	\$ 601,666,596
Educational Enhancement TF	\$ 612,225,777	\$ -	\$ 17,079,571	\$ 7,898,617	\$ 12,740,542	\$ 824,574	\$ -	\$ -	\$ -	\$ 38,543,304
Phosphate Research TF	\$ 5,237,088	\$ -	\$ -	\$ -	\$ -	\$ -	\$ -	\$ -	\$ -	-
Total All Funds	\$ 3,942,963,676	\$ 21,287,150	\$ 210,998,382	\$ 144,530,605	\$ 139,591,942	\$ 36,565,568	\$ 31,814,672	\$ 33,224,542	\$ 22,197,039	\$ 640,209,900

State University System of Florida
General Appropriations Act
University Detail by Grants & Aids /Special Category
2025-2026

University Totals	Special Units Totals	Moffitt Cancer Center	Institute For Human And Machine Cognition	Florida Postsecondary Comprehensive Transition Program	Florida Postsecondary Academic Library Network	Enterprise Cybersecurity Resiliency	Community School Grant Program	Lastinger Center for Learning	Florida Center for Autism and Neurdevelopment	Fixed Capital Outlay Projects	E&G Total
G/A - Education & General											
General Revenue Fund	\$ 3,253,894,967	\$ -	\$ -	\$ -	\$ -	\$ -	\$ -	\$ -	\$ -	\$ -	\$ 3,253,894,967
Educational Enhancement	\$ 612,225,777	\$ -	\$ -	\$ -	\$ -	\$ -	\$ -	\$ -	\$ -	\$ -	\$ 612,225,777
Phosphate Research	\$ 5,234,908	\$ -	\$ -	\$ -	\$ -	\$ -	\$ -	\$ -	\$ -	\$ -	\$ 5,234,908
Total G/A - Education & General	\$ 3,871,355,652	\$ -	\$ -	\$ -	\$ -	\$ -	\$ -	\$ -	\$ -	\$ -	\$ 3,871,355,652
G/A - FAMU-FSU College of Engineering											
General Revenue Fund	\$ 21,256,475										\$ 21,256,475
Total G/A - FAMU-FSU College of Engineering	\$ -	\$ 21,256,475	\$ -	\$ -	\$ -	\$ -	\$ -	\$ -	\$ -	\$ -	\$ 21,256,475
G/A - IFAS											
General Revenue Fund	\$ 189,966,502										\$ 189,966,502
Educational Enhancement TF	\$ 17,079,571										\$ 17,079,571
Total G/A - IFAS	\$ -	\$ 207,046,073	\$ -	\$ -	\$ -	\$ -	\$ -	\$ -	\$ -	\$ -	\$ 207,046,073
G/A - UF Health Center											
General Revenue Fund	\$ 134,796,162										\$ 134,796,162
Educational Enhancement TF	\$ 7,898,617										\$ 7,898,617
Total G/A - UF Health Center	\$ -	\$ 142,694,779	\$ -	\$ -	\$ -	\$ -	\$ -	\$ -	\$ -	\$ -	\$ 142,694,779
G/A - USF Medical Center											
General Revenue Fund	\$ 126,416,839										\$ 126,416,839
Educational Enhancement TF	\$ 12,740,542										\$ 12,740,542
Total G/A - USF Medical Center	\$ -	\$ 139,157,381	\$ -	\$ -	\$ -	\$ -	\$ -	\$ -	\$ -	\$ -	\$ 139,157,381
G/A - FSU Medical School											
General Revenue Fund	\$ 35,359,083										\$ 35,359,083
Educational Enhancement TF	\$ 824,574										\$ 824,574
Total G/A - FSU Medical School	\$ -	\$ 36,183,657	\$ -	\$ -	\$ -	\$ -	\$ -	\$ -	\$ -	\$ -	\$ 36,183,657
ALG - UCF Medical School											
General Revenue Fund	\$ 31,814,672										\$ 31,814,672
Total ALG - UCF Medical School	\$ -	\$ 31,814,672	\$ -	\$ -	\$ -	\$ -	\$ -	\$ -	\$ -	\$ -	\$ 31,814,672
ALG - FIU Medical School											
General Revenue Fund	\$ 33,153,594										\$ 33,153,594
Total ALG - FIU Medical School	\$ -	\$ 33,153,594	\$ -	\$ -	\$ -	\$ -	\$ -	\$ -	\$ -	\$ -	\$ 33,153,594
ALG - FAU Medical School											
General Revenue Fund	\$ 22,197,039										\$ 22,197,039
Total ALG - FAU Medical School	\$ -	\$ 22,197,039	\$ -	\$ -	\$ -	\$ -	\$ -	\$ -	\$ -	\$ -	\$ 22,197,039
G/A - Nursing Education											
General Revenue Fund	\$ 46,000,000	\$ -	\$ -	\$ -	\$ -	\$ -			\$ -	\$ -	\$ 46,000,000

State University System of Florida
General Appropriations Act
University Detail by Grants & Aids /Special Category
2025-2026

University Totals	Special Units Totals	Moffitt Cancer Center	Institute For Human And Machine Cognition	Florida Postsecondary Comprehensive Transition Program	Florida Postsecondary Academic Library Network	Enterprise Cybersecurity Resiliency	Community School Grant Program	Lastinger Center for Learning	Florida Center for Autism and Neurdevelopment	Fixed Capital Outlay Projects	E&G Total
G/A - Student Financial Assistance											
General Revenue f	\$ 7,475,378	\$ -	\$ -	\$ -	\$ -	\$ -	\$ -	\$ -	\$ -	\$ -	7,475,378
S/C - Risk Management Insurance											
General Revenue f	\$ 18,130,466	\$ 6,706,230	\$ -	\$ -	\$ -	\$ -	\$ -	\$ -	\$ -	\$ -	24,836,696
Phosphate Resear	\$ 2,180	\$ -	\$ -	\$ -	\$ -	\$ -	\$ -	\$ -	\$ -	\$ -	2,180
Total S/C - Risk Man	\$ 18,132,646	\$ 6,706,230	\$ -	\$ -	\$ -	\$ -	\$ -	\$ -	\$ -	\$ -	24,838,876
G/A - Cancer Center Operations											
General Revenue f	\$ -	\$ -	\$ 23,576,930	\$ -	\$ -	\$ -	\$ -	\$ -	\$ -	\$ -	23,576,930
G/A - Institute for Human & Machine Cognition											
General Revenue f	\$ -	\$ -	\$ -	\$ 9,339,184	\$ -	\$ -	\$ -	\$ -	\$ -	\$ -	9,339,184
G/A - FI Postsecondary Comprehensive Transition Program											
General Revenue f	\$ -	\$ -	\$ -	\$ -	\$ 12,484,565	\$ -	\$ -	\$ -	\$ -	\$ -	12,484,565
G/A - FI Postsecondary Academic Library Network											
General Revenue f	\$ -	\$ -	\$ -	\$ -	\$ -	\$ 13,421,847	\$ -	\$ -	\$ -	\$ -	13,421,847
G/A - Community School Grant Program											
General Revenue f	\$ -	\$ -	\$ -	\$ -	\$ -	\$ -	\$ 20,116,736	\$ -	\$ -	\$ -	20,116,736
G/A - Enterprise Cybersecurity Resiliency											
General Revenue f	\$ -	\$ -	\$ -	\$ -	\$ -	\$ 35,908,629	\$ -	\$ -	\$ -	\$ -	35,908,629
G/A - Lastinger Center For Learning											
General Revenue f	\$ -	\$ -	\$ -	\$ -	\$ -	\$ -	\$ -	\$ 50,180,571	\$ -	\$ -	50,180,571
G/A - Florida Center for Autism and Neurodevelopment											
General Revenue f	\$ -	\$ -	\$ -	\$ -	\$ -	\$ -	\$ -	\$ -	\$ 10,000,000	\$ -	10,000,000
G/A - Fixed Capital Outlay Projects											
General Revenue f	\$ -	\$ -	\$ -	\$ -	\$ -	\$ -	\$ -	\$ -	\$ -	\$ 758,333	758,333
Grand Total											
General Revenue	\$ 3,325,500,811	\$ 601,666,596	\$ 23,576,930	\$ 9,339,184	\$ 12,484,565	\$ 13,421,847	\$ 35,908,629	\$ 20,116,736	\$ 50,180,571	\$ 10,000,000	4,102,954,202
Educational Enhanc	\$ 612,225,777	\$ 38,543,304	\$ -	\$ -	\$ -	\$ -	\$ -	\$ -	\$ -	\$ -	650,769,081
Phosphate Resear	\$ 5,237,088	\$ -	\$ -	\$ -	\$ -	\$ -	\$ -	\$ -	\$ -	\$ -	5,237,088
Total All Funds	\$ 3,942,963,676	\$ 640,209,900	\$ 23,576,930	\$ 9,339,184	\$ 12,484,565	\$ 13,421,847	\$ 35,908,629	\$ 20,116,736	\$ 50,180,571	\$ 10,000,000	4,758,960,371

**State University System of Florida
Education and General
2025-2026 General Appropriations Act Summary
Fund Detail**

Specific Appropriation #	Appropriation Category	General Revenue	Educ. Enhancement (Lottery) Trust Fund	Phosphate Research Trust Fund	Total
145	G/A - Moffitt Cancer Center & Research Institute	\$23,576,930			\$23,576,930
146	G/A - Nursing Education	\$46,000,000			\$46,000,000
9 & 147	G/A - Education & General Activities (E&G)*	\$3,253,894,967	\$612,225,777	\$5,234,908	\$3,871,355,652
148	G/A - Florida Postsecondary Academic Library Network	\$13,421,847			\$13,421,847
149	G/A - FAMU/FSU College of Engineering	\$21,256,475			\$21,256,475
10 & 150	G/A - Institute of Food & Agricultural Sci (IFAS)	\$189,966,502	\$17,079,571		\$207,046,073
11 & 151	G/A - USF- Health Sciences Center (HSC)	\$126,416,839	\$12,740,542		\$139,157,381
12 & 152	G/A - UF-Health Sciences Center (HSC)	\$134,796,162	\$7,898,617		\$142,694,779
153	ALG - Lastinger Center for Learning (UF)	\$50,180,571			\$50,180,571
13 & 154	G/A - FSU Medical School (MS)	\$35,359,083	\$824,574		\$36,183,657
155	ALG - UCF Medical School (MS)	\$31,814,672			\$31,814,672
156	ALG - FIU Medical School (MS)	\$33,153,594			\$33,153,594
157	ALG - FAU Medical School (MS)	\$22,197,039			\$22,197,039
158	ALG - Student Financial Assistance	\$7,475,378			\$7,475,378
159	ALG - Fl. Postsecondary Comprehensive Transition Program	\$12,484,565			\$12,484,565
160	G/A - Institute for Human & Machine Cognition	\$9,339,184			\$9,339,184
161	S/C - Enterprise Cybersecurity Resiliency	\$35,908,629			\$35,908,629
162	S/C - Risk Management Insurance	\$24,836,696		\$2,180	\$24,838,876
162A	G/A - Florida Center for Autism and Neurodevelopment	\$10,000,000			\$10,000,000
163	G/A - Community School Grant Program	\$20,116,736			\$20,116,736
163A	G/A - Fixed Capital Outlay/Facility Repair Maintenance & Construction	\$758,333			\$758,333
CH 2025-180	Special Categories - NWRDC Florida Behavioral Health Data Repository	\$794,880			\$794,880
SUMMARY		\$4,103,749,082	\$650,769,081	\$5,237,088	\$4,759,755,251

Non-Recurring Appropriations



**State University System
Education and General
Nonrecurring Appropriations
2025-2026**

2025-26 Issue Title	Total Appropriation	Nonrecurring
System Initiatives		
Performance-Based Funding	\$ 350,000,000	\$ 350,000,000
University Initiatives		
FAMU - Agronomic Study on Emerging Crops	\$ 975,000	\$ 975,000
FAU - Lab Schools Center for Educational Strategy and Innovation	\$ 2,000,000	\$ 2,000,000
FAU - Max Planck Florida Scientific Fellows Program	\$ 1,110,899	\$ 1,110,899
FAU - Medical School - Continued Enrollment Expansion	\$ 450,000	\$ 450,000
FPU - Rising to 3,000 – Expanding Florida Poly’s Impact	\$ 10,000,000	\$ 10,000,000
FSU - American Legion Boys State & American Legion Auxiliary Girls State	\$ 200,000	\$ 200,000
FSU - Hillel at FSU Jewish Life on College Campuses Physical & Cultural Safety	\$ 480,000	\$ 480,000
FSU - Institute for Pediatric Rare Disease	\$ 4,500,000	\$ 4,500,000
FSU - Sunshine Genetics Pilot Program	\$ 3,000,000	\$ 3,000,000
UCF - Center for the Student of Human Trafficking & Modern Slavery	\$ 500,000	\$ 500,000
UCF - RESTORES PTSD Clinic for Florida’s Veterans & First Responders	\$ 500,000	\$ 500,000
UF - Jewish Life on College Campuses- Physical and Cultural Safety	\$ 150,000	\$ 150,000
UF - AI Leadership Technology Renewal - HiPer Gator Updates	\$ 350,000	\$ 350,000
UF - Lastinger Center for Learning	\$ 50,180,571	\$ 16,000,000
UF - Center of Excellence for Advanced Catheter Technology	\$ 2,132,500	\$ 2,132,500
UF - Health Jacksonville - Forensic Interview Center	\$ 500,000	\$ 500,000
UF - Health - Diabetes STEPS: Screening, Treatment, Education, Prevention, Support	\$ 10,000,000	\$ 10,000,000
UF - Health - Alzheimer's and Dementia Research	\$ 5,000,000	\$ 5,000,000
UF - Health - Intelligent Immunotherapy Initiative (i3) - AI Empowered Healthier Tomorrow	\$ 500,000	\$ 500,000
UF - IFAS - Center for Applied Artificial Intelligence in Agriculture	\$ 2,250,000	\$ 2,250,000
USF - Institute of Applied Engineering Classified Research Equipment	\$ 2,500,000	\$ 2,500,000
USF - Jewish Life on College Campuses - Physical and Cultural Safety	\$ 245,000	\$ 245,000
USF - UMMatter Program Expansion	\$ 666,667	\$ 666,667
UWF - Undergraduate Civil Engineering Program	\$ 750,000	\$ 750,000
Pass-Through		
Institute for Human and Machine Cognition	\$ 9,339,184	\$ 1,000,000
Alzheimer's Research Using Exablate Neuro Focused Ultrasound Technology	\$ 3,000,000	\$ 3,000,000
Student Nurse Intern Program for Recruitment and Retention	\$ 750,000	\$ 750,000
FSU/NWRDC - Florida Behavioral Health Care Data Repository	\$ 794,880	\$ 229,840
Fixed Capital Outlay		
FSU - Hillel at FSU Jewish Life on College Campuses Physical & Cultural Safety	\$ 170,000	\$ 170,000
UF - Jewish Life on College Campuses- Physical and Cultural Safety	\$ 175,000	\$ 175,000
USF - UMMatter Program Expansion	\$ 333,333	\$ 333,333
USF - Jewish Life on College Campuses - Physical and Cultural Safety	\$ 80,000	\$ 80,000
Totals :	\$ 463,583,034	\$ 420,498,239

E&G	\$ 448,940,637	\$ 414,760,066
Pass-Through	\$ 13,884,064	\$ 4,979,840
Fixed Capital Outlay	\$ 758,333	\$ 758,333
	\$ 463,583,034	\$ 420,498,239

Allocation by Major Issue



State University System
Education and General
FY 2025-2026 Final Conference Spread POST-VETO

<u>2025-2026 Start-Up Budget</u>	<u>UF</u>	<u>FSU</u>	<u>FAMU</u>	<u>USF Tampa</u>	<u>USF St. Pete</u>	<u>USF Sar/Man</u>	<u>FAU</u>	<u>UWF</u>	<u>UCF</u>	<u>FIU</u>
General Revenue	603,502,748.00	513,509,463.00	91,850,954.00	284,528,649.00	34,865,782.00	19,216,958.00	151,488,149.00	95,911,907.00	281,755,031.00	273,397,269.00
Ed Enhancement (Lottery)	114,514,170.00	95,611,727.00	36,082,404.00	85,183,111.00	3,773,334.00	3,255,609.00	50,809,486.00	19,193,632.00	87,642,431.00	75,006,589.00
Phosphate Research TF	0.00	0.00	0.00	0.00	0.00	0.00	0.00	0.00	0.00	0.00
TOTAL	718,016,918.00	609,121,190.00	127,933,358.00	369,711,760.00	38,639,116.00	22,472,567.00	202,297,635.00	115,105,539.00	369,397,462.00	348,403,858.00
<u>Technical Transfer - From USF E&G to USF Med</u>										
Recurring General Revenue				(11,334,043.00)						
<u>Technical Transfer - From FAU E&G to FAU Med</u>										
Recurring General Revenue							(5,000,000.00)			
<u>Technical Transfer - From UF E&G to IFAS</u>										
Recurring General Revenue	(1,998,199.00)									
<u>Technical Transfer - From USF Main to USF-Sar/Man</u>										
Recurring General Revenue										
<u>Technical Transfer - From USF Main to USF-St. Pete</u>										
Recurring General Revenue										
<u>Reduction of Current Year Base for Institutional Investment In Performance Based Incentives</u>										
Recurring General Revenue	(60,349,632.00)	(49,418,400.00)	(12,842,277.00)	(35,401,875.00)			(20,307,154.00)	(11,554,588.00)	(35,554,732.00)	(32,464,106.00)
<u>2025-26 Institutional Investment in Performance Based Incentives</u>										
Recurring General Revenue										
<u>Balance Lottery to Available Revenue - GR</u>										
Recurring General Revenue	1,959,100.00	1,635,719.00	617,295.00	1,577,558.00			869,245.00	328,363.00	1,499,381.00	1,283,207.00
<u>Balance Lottery to Available Revenue - Trust</u>										
Recurring Lottery EETF	(1,959,100.00)	(1,635,719.00)	(617,295.00)	(1,577,558.00)			(869,245.00)	(328,363.00)	(1,499,381.00)	(1,283,207.00)
<u>Recduce Incentives for Programs of Strategic Emphasis</u>										
Recurring General Revenue										
<u>Music-Based Supplemental Consent to accelerate Learner Engagement & Success (MSCALES)</u>										
Recurring General Revenue	1,000,000.00									
<u>Realignment of Johnson Matching Funds</u>										
Recurring General Revenue										
<u>Performance-Based Funding Incentives</u>										
NR General Revenue										
<u>Preeminence</u>										
NR General Revenue	10,000,000.00	10,000,000.00		10,000,000.00						10,000,000.00
<u>Operational Support - Nonrecurring</u>										
NR General Revenue	5,000,000.00	27,400,000.00	15,000,000.00	2,500,000.00			10,000,000.00		5,000,000.00	20,000,000.00
<u>Operational Support - Recurring</u>										
Recurring General Revenue		15,000,000.00		2,500,000.00						15,000,000.00
<u>Research University Alzheimer's Research Using Exablate Neuro Focused Ultrasound (SF 1102) (HF 3452)</u>										
NR General Revenue										
<u>Student Nurse Intern Program for Recruitment and Retention (SF 2506) (HF 1779)</u>										
NR General Revenue										
<u>Consolidate USF</u>										
Recurring General Revenue				54,082,740.00	(34,865,782.00)	(19,216,958.00)				
Recurring Lottery EETF				7,028,943.00	(3,773,334.00)	(3,255,609.00)				

State University System
Education and General
FY 2025-2026 Final Conference Spread POST-VETO

<u>2025-2026 Start-Up Budget</u>	<u>UF</u>	<u>FSU</u>	<u>FAMU</u>	<u>USF Tampa</u>	<u>USF St. Pete</u>	<u>USF Sar/Man</u>	<u>FAU</u>	<u>UWF</u>	<u>UCF</u>	<u>FIU</u>
General Revenue	603,502,748.00	513,509,463.00	91,850,954.00	284,528,649.00	34,865,782.00	19,216,958.00	151,488,149.00	95,911,907.00	281,755,031.00	273,397,269.00
Ed Enhancement (Lottery)	114,514,170.00	95,611,727.00	36,082,404.00	85,183,111.00	3,773,334.00	3,255,609.00	50,809,486.00	19,193,632.00	87,642,431.00	75,006,589.00
Phosphate Research TF	0.00	0.00	0.00	0.00	0.00	0.00	0.00	0.00	0.00	0.00
TOTAL	718,016,918.00	609,121,190.00	127,933,358.00	369,711,760.00	38,639,116.00	22,472,567.00	202,297,635.00	115,105,539.00	369,397,462.00	348,403,858.00
<u>2025-2026 Budget - University Totals Shown in the GAA</u>										
General Revenue	559,114,017.00	518,126,782.00	94,625,972.00	308,453,029.00	0.00	0.00	137,050,240.00	84,685,682.00	252,699,680.00	287,216,370.00
Ed Enhancement (Lottery)	112,555,070.00	93,976,008.00	35,465,109.00	90,634,496.00	0.00	0.00	49,940,241.00	18,865,269.00	86,143,050.00	73,723,382.00
Phosphate Research TF	0.00	0.00	0.00	0.00	0.00	0.00	0.00	0.00	0.00	0.00
TOTAL	671,669,087.00	612,102,790.00	130,091,081.00	399,087,525.00	0.00	0.00	186,990,481.00	103,550,951.00	338,842,730.00	360,939,752.00
NonRecurring Projects										
FAMU - Agronomic Study on Emerging Crops			975,000.00							
FAU - Lab Schools Center for Educational Strategy and Innovation							2,000,000.00			
FAU—Max Planck Florida Scientific Fellows Program (MPFSFP)							1,110,899.00			
FPU Rising to 3,000 – Expanding Florida Poly's Impact										
FSU - American Legion Boys State & American Legion Auxiliary Girls State		200,000.00								
FSU - Hillel at FSU Jewish Life on College Campuses Physical & Cultural Safety		480,000.00								
FSU - Institute for Pediatric Rare Disease		4,500,000.00								
FSU Sunshine Genetics Pilot Program (SF 1963) (HF 3246)		3,000,000.00								
UCF - Center for the Student of Human Trafficking & Modern Slavery									500,000.00	
UCF - RESTORES PTSD Clinic for Florida's Veterans & First Responders									500,000.00	
UF - Jewish Life on College Campuses- Physical and Cultural Safety	150,000.00									
UF - AI Leadership Technology Renewal - HiPer Gator Updates	350,000.00									
UF - Center of Excellence for Advanced Catheter Technology	2,132,500.00									
USF - Institute of Applied Engineering Classified Research Equipment				2,500,000.00						
USF - Jewish Life on College Campuses - Physical and Cultural Safety				245,000.00						
USF - UMatteer Program Expansion				666,666.67						
UWF - Undergraduate Civil Engineering Program								750,000.00		
<u>2025-2026 Budget - University Total Totals (including NR projects)</u>										
General Revenue	561,746,517.00	526,306,782.00	95,600,972.00	311,864,695.67	0.00	0.00	140,161,139.00	85,435,682.00	253,699,680.00	287,216,370.00
Ed Enhancement (Lottery)	112,555,070.00	93,976,008.00	35,465,109.00	90,634,496.00	0.00	0.00	49,940,241.00	18,865,269.00	86,143,050.00	73,723,382.00
Phosphate Research TF	0.00	0.00	0.00	0.00	0.00	0.00	0.00	0.00	0.00	0.00
TOTAL	674,301,587.00	620,282,790.00	131,066,081.00	402,499,191.67	0.00	0.00	190,101,380.00	104,300,951.00	339,842,730.00	360,939,752.00

**State University System
Education and General
FY 2025-2026 Final Conference Spread POST-VETO**

[illegible]

State University System
Education and General
FY 2025-2026 Final Conference Spread POST-VETO

								Research University Alzheimer's Research Using Exablate Neuro Focused Ultrasound Technology		Student Nurse Intern Program for Recruitment and Retention	
	UNF	FGCU	NCF	Polytechnic	Johnson Matching Grant	Performance- Based Funding	PBF - Recruitment and Retention Incentives		PSE Waiver Incentive		UNIV.
2025-2026 Start-Up Budget											
General Revenue	112,244,379.00	117,508,472.00	38,873,282.00	49,222,580.00	335,000.00	0.00	0.00	0.00	38,485,299.00		2,706,695,922.00
Ed Enhancement (Lottery)	31,189,299.00	17,384,103.00	2,541,324.00	694,779.00	0.00	0.00	0.00	0.00	0.00		622,881,998.00
Phosphate Research TF	0.00	0.00	0.00	5,234,908.00	0.00	0.00	0.00	0.00	0.00		5,234,908.00
TOTAL	143,433,678.00	134,892,575.00	41,414,606.00	55,152,267.00	335,000.00	0.00	0.00	0.00	38,485,299.00		3,334,812,828.00
2025-2026 Budget - University Totals Shown in the GAA											
General Revenue	106,379,724.00	104,265,017.00	59,759,455.00	44,223,634.00	0.00	645,000,000.00	0.00	3,000,000.00	18,485,299.00	750,000.00	3,223,834,901.00
Ed Enhancement (Lottery)	30,655,715.00	17,086,697.00	2,497,847.00	682,893.00	0.00	0.00	0.00	0.00	0.00	0.00	612,225,777.00
Phosphate Research TF	0.00	0.00	0.00	5,234,908.00	0.00	0.00	0.00	0.00	0.00		5,234,908.00
TOTAL	137,035,439.00	121,351,714.00	62,257,302.00	50,141,435.00	0.00	645,000,000.00	0.00	3,000,000.00	18,485,299.00	750,000.00	3,841,295,586.00
NonRecurring Projects											
FAMU - Agronomic Study on Emerging Crops											975,000.00
FAU - Lab Schools Center for Educational Strategy and Innovation											2,000,000.00
FAU—Max Planck Florida Scientific Fellows Program (MPFSFP)											1,110,899.00
FPU - Rising to 3,000 – Expanding Florida Poly's Impact				10,000,000.00							10,000,000.00
FSU - American Legion Boys State & American Legion Auxiliary Girls State											200,000.00
FSU - Hillel at FSU Jewish Life on College Campuses Physical & Cultural Safety											480,000.00
FSU - Institute for Pediatric Rare Disease											4,500,000.00
FSU Sunshine Genetics Pilot Program (SF 1963) (HF 3246)											3,000,000.00
UCF - Center for the Student of Human Trafficking & Modern Slavery											500,000.00
UCF - RESTORES PTSD Clinic for Florida's Veterans & First Responders											500,000.00
UF - Jewish Life on College Campuses- Physical and Cultural Safety											150,000.00
UF - AI Leadership Technology Renewal - HiPer Gator Updates											350,000.00
UF - Center of Excellence for Advanced Catheter Technology											2,132,500.00
USF - Institute of Applied Engineering Classified Research Equipment											2,500,000.00
USF - Jewish Life on College Campuses - Physical and Cultural Safety											245,000.00
USF - UMMatter Program Expansion											666,666.67
UWF - Undergraduate Civil Engineering Program											750,000.00
2025-2026 Budget - University Total Totals (including NR projects)											
General Revenue	106,379,724.00	104,265,017.00	59,759,455.00	54,223,634.00	0.00	645,000,000.00	0.00	3,000,000.00	18,485,299.00	750,000.00	3,253,894,966.67
Ed Enhancement (Lottery)	30,655,715.00	17,086,697.00	2,497,847.00	682,893.00	0.00	0.00	0.00	0.00	0.00	0.00	612,225,777.00
Phosphate Research TF	0.00	0.00	0.00	5,234,908.00	0.00	0.00	0.00	0.00	0.00	0.00	5,234,908.00
TOTAL	137,035,439.00	121,351,714.00	62,257,302.00	60,141,435.00	0.00	645,000,000.00	0.00	3,000,000.00	18,485,299.00	750,000.00	3,871,355,651.67

State University System
Education and General
FY 2025-2026 Final Conference Spread POST-VETO

	FAMU-FSU College of Engineering	UF-IFAS	UF-HSC	USF-HSC	FSU-MS	UCF-MS	FIU-MS	FAU-MS
<u>Special Units:</u>								
<u>2025-2026 Start-Up Budget</u>								
General Revenue	21,256,475.00	182,218,303.00	118,796,162.00	107,082,796.00	35,359,083.00	31,814,672.00	33,153,594.00	16,747,039.00
Ed Enhancement (Lottery)	0.00	17,079,571.00	7,898,617.00	12,740,542.00	824,574.00	0.00	0.00	0.00
Phosphate Research TF	0.00	0.00	0.00	0.00	0.00	0.00	0.00	0.00
TOTAL	21,256,475.00	199,297,874.00	126,694,779.00	119,823,338.00	36,183,657.00	31,814,672.00	33,153,594.00	16,747,039.00
<u>Technical Transfer - From USF E&G to USF Med</u>								
Recurring General Revenue				11,334,043.00				
<u>Technical Transfer - From FAU E&G to FAU Med</u>								
Recurring General Revenue								5,000,000.00
<u>Technical Transfer - From UF E&G to IFAS</u>								
Recurring General Revenue		1,998,199.00						
<u>Operational Support</u>								
NR General Revenue				8,000,000.00				
<u>IFAS Workload</u>								
Recurring General Revenue		3,500,000.00						
<u>FAU Med - Continued Enrollment Expansion</u>								
NR General Revenue								450,000.00
<u>UF Health - Diabetes STEPS: Screening, Treatment, Education, Prevention, Support</u>								
NR General Revenue			10,000,000.00					
<u>UF Health - Forensic Interview Center</u>								
NR General Revenue			500,000.00					
<u>UF Health - Alzheimer's and Dementia Research</u>								
NR General Revenue			5,000,000.00					
<u>UF Health - Intelligent Immunotherapy Initiative (i3) - AI Empowered Healthier Tomorrow</u>								
NR General Revenue			500,000.00					
<u>UF IFAS - Center for Applied Artificial Intelligence in Agriculture</u>								
NR General Revenue		2,250,000.00						
<u>USF Med - Center for Neuromusculoskeletal Research</u>								
NR General Revenue				500,000.00				
2025-2026 Final Conference Budget - POST-VETO								
General Revenue	21,256,475.00	189,966,502.00	134,796,162.00	126,416,839.00	35,359,083.00	31,814,672.00	33,153,594.00	22,197,039.00
Ed Enhancement (Lottery)	0.00	17,079,571.00	7,898,617.00	12,740,542.00	824,574.00	0.00	0.00	0.00
Phosphate Research TF	0.00	0.00	0.00	0.00	0.00	0.00	0.00	0.00
TOTAL	21,256,475.00	207,046,073.00	142,694,779.00	139,157,381.00	36,183,657.00	31,814,672.00	33,153,594.00	22,197,039.00

State University System
Education and General
FY 2025-2026 Final Conference Spread POST-VETO

Other Issues - Special Categories / Pass Throughs

	Moffitt Cancer Center	Institute for Human & Machine Cognition	Florida Postsecondary Comprehensive Transition Program (UCF)	Florida Postsecondary Academic Library Network (FSU-NWRDC)	Cybersecurity Resiliency (USF/FSU)	Community School Grant Program (UCF)	Lastinger Center for Learning (UF)	Florida Center for Autism (UF)	Florida Behavioral Health Care Data Repository FSU/NWRDC	Fixed Capital Outlay
<u>2025-2026 Start-Up Budget</u>										
General Revenue	20,576,930.00	6,339,184.00	12,484,565.00	13,421,847.00	35,500,000.00	20,116,736.00	30,180,571.00	0.00	0.00	0.00
Ed Enhancement (Lottery)	0.00	0.00	0.00	0.00	0.00	0.00	0.00	0.00	0.00	0.00
Phosphate Research TF	0.00	0.00	0.00	0.00	0.00	0.00	0.00	0.00	0.00	0.00
TOTAL	20,576,930.00	6,339,184.00	12,484,565.00	13,421,847.00	35,500,000.00	20,116,736.00	30,180,571.00	0.00		0.00
<u>Workload Increase</u>										
Recurring General Revenue							4,000,000.00	10,000,000.00		
Nonrecurring General Revenue							16,000,000.00			
<u>IHMC</u>										
Recurring General Revenue		3,000,000.00								
<u>Realign Enterprise Cybersecurity Resiliency</u>										
Recurring General Revenue (FSU)					408,629.00					
<u>Moffitt</u>										
NR General Revenue	3,000,000.00									
<u>UF - Jewish Life on College Campuses - Physical and Cultural Safety</u>										
NR General Revenue										175,000.00
<u>FSU - Hillel at FSU Jewish Life on College Campuses Physical & Cultural Safety</u>										
NR General Revenue										170,000.00
<u>USF Jewish Life on College Campuses - Physical and Cultural Safety</u>										
NR General Revenue										80,000.00
<u>USF - UMMatter Program Expansion</u>										
NR General Revenue										333,333.00
<u>FSU/NWRDC - Florida Behavioral Health Care Data Repository</u>										
Recurring General Revenue									565,040.00	
Nonrecurring General Revenue									229,840.00	
<u>2025-2026 Final Conference Budget - POST-VETO</u>										
General Revenue	23,576,930.00	9,339,184.00	12,484,565.00	13,421,847.00	35,908,629.00	20,116,736.00	50,180,571.00	10,000,000.00	794,880.00	758,333.00
Ed Enhancement (Lottery)	0.00	0.00	0.00	0.00	0.00	0.00	0.00	0.00	0.00	0.00
Phosphate Research TF	0.00	0.00	0.00	0.00	0.00	0.00	0.00	0.00	0.00	0.00
TOTAL	23,576,930.00	9,339,184.00	12,484,565.00	13,421,847.00	35,908,629.00	20,116,736.00	50,180,571.00	10,000,000.00	794,880.00	758,333.00

Performance Funding Detail



Board of Governors

Performance Funding Model Overview

The Performance Funding Model includes 10 metrics that evaluate the institutions on a range of issues. One metric is a Choice metric, picked by the university boards of trustees. These metrics were chosen after reviewing over 40 metrics identified in the University Work Plans.

The model has four guiding principles: 1) use metrics that align with SUS Strategic Plan goals, 2) reward Excellence or Improvement, 3) have a few clear, simple metrics, and 4) acknowledge the unique mission of the different institutions.

Key components of the model:

- Institutions will be evaluated on either Excellence or Improvement for each metric.
- Data is based on one-year data.
- The benchmarks for Excellence were based on the Board of Governors 2025 System Strategic Plan goals and analysis of relevant data trends, whereas the benchmarks for Improvement were determined after reviewing data trends for each metric.
- The Florida Legislature and Governor determine the amount of new state funding and an amount of institutional funding that would come from each university's recurring state base appropriation.

Metrics Common to all Institutions:

Nine metrics apply to all twelve institutions. There are two exceptions: Metric 8b for New College and FL Poly and Metric 9b.1 for FL Poly.

Metrics Common to all Institutions	
1. Percent of Bachelor's Graduates Employed (Earning \$40,000+) or Continuing their Education	6. Bachelor's Degrees Awarded in Areas of Strategic Emphasis
2. Median Wages of Bachelor's Graduates Employed Full-time	7. University Access Rate (Percent of Undergraduates with a Pell-grant)
3. Average Cost to the Student (Net Tuition per 120 Credit Hours)	8a. Graduate Degrees Awarded in Areas of Strategic Emphasis 8b. Percentage of Newly Admitted FTICs with High School GPA of a 4.0 or Higher- for NCF only
4. Four Year Graduation Rate (Full-time FTIC)	9a. Three-Year Graduation Rate for FCS Associate in Arts Transfer Student 9b. Six-Year Graduation Rate for Students who are Awarded a Pell Grant in their First Year
5. Academic Progress Rate (2 nd Year Retention with GPA Above 2.0)	10. Board of Trustees Choice

Board of Trustees Choice Metric – Each Board of Trustees has chosen a metric from the remaining metrics in the University Work Plans that are applicable to the mission of that university and have not been previously chosen for the model.

How will the funding component of the model work?

To ensure each university is striving to excel and improve on key metrics, there must be a financial incentive. That financial incentive will not only be new state funding, but an amount of the base state funding reallocated.

Board of Governors

Performance Funding Model Overview

State Investment versus Institutional Base Funding:

The amount of the state investment appropriated by the Legislature and Governor for performance funding will be matched by an amount reallocated from the university system base budget. These “institutional base” funds are the cumulative recurring state appropriations the Legislature has appropriated to each institution. Any state investment funding appropriated would be allocated as follows:

Institutional Base Funding Allocation

1. A prorated amount will be deducted from each university’s base recurring state appropriation.
2. On a 100-point scale, a threshold of 60-points is established as the minimum number of total points needed to be eligible for the institutional investment.
3. Any institution that fails to meet the minimum point threshold for the institutional investment must submit an improvement plan to the Board for consideration at its August/September meeting that specifies the activities and strategies for improving the institution’s performance. As of July 1, 2016, an institution is limited to only one improvement plan.

State Investment Funding Allocation

1. Each university metric is evaluated based on Excellence or Improvement and has ten benchmarks ranging from low to high. The lowest benchmark receives one point, while the highest receives ten points. The higher point value for Excellence or Improvement on each metric are counted in the university’s total score.
2. The state investment will be allocated based on points earned, with a maximum of 100 points possible.
3. On a 100-point scale, institutions with the top 3 scores are eligible for their proportional amount of the state’s investment. In the case of a tie for the top 3 scores, the tie will go to the benefit of the institutions.
4. All SUS institutions with a score the same or higher as the previous year, are eligible for their proportional amount of the state’s investment.
5. Any institution with a score less than the previous year but the previous year’s score was higher or the same than the year before, are eligible for their proportional amount of the state’s investment.
6. Any institution with a score lower than the previous year’s score for two consecutive years must submit a student success plan to the Board for consideration at its August/September meeting that specifies the activities and strategies for improving the institution’s performance metrics in order to be eligible for their proportional amount of the state’s investment. If approved, up to 50 percent of the allocation shall be released. A monitoring report shall be considered by the Board during the March meeting. If approved, up to the remaining balance of the allocation shall be released.
7. Any institution with a score lower than 70 points must submit a student success plan to the Board for consideration at its August/September meeting that specifies the activities and strategies for improving the institution’s performance metrics in order to be eligible for 50 percent of their proportional amount of the state’s investment. If approved, up to 25 percent of the allocation shall be released. A monitoring report shall be considered by the Board during the March meeting. If approved, up to the remaining balance of half of the allocation shall be released.
8. The remaining funds of each institutions state’s investment shall be distributed to the top three scoring institutions (including ties) based on the total number of points of the top three scoring eligible institutions.

2025-2026 Performance-Based Funding Model Allocations

July 2025, September 2025, March 2026

		July 2025 Allocation - PENDING				Sept. 2025 PENDING	March 2026 PENDING				
	Score	Institutional Investment Allocation	State Investment Allocation	Top 3 State Investment Allocation	State Investment Allocation held in reserve		State Investment Allocation Maximum*	State Investment Allocation Maximum*	Final State Investment Allocation	Final Total Allocation	
FAMU	83	\$12,842,277	\$15,236,600							\$15,236,600	\$28,078,877
FAU	76	\$20,307,154	\$24,093,233							\$24,093,233	\$44,400,387
FGCU	67	\$13,540,861	\$0		\$8,032,715			\$4,016,358	\$4,016,357	\$8,032,715	\$21,573,576
FIU	96	\$32,464,106	\$38,516,736	\$2,072,958						\$40,589,694	\$73,053,800
FPU	74	\$5,010,831	\$5,945,055							\$5,945,055	\$10,955,886
FSU	91	\$49,418,400	\$58,632,000	\$1,964,992						\$60,596,992	\$110,015,392
NCF	80	\$4,157,304	\$4,932,394							\$4,932,394	\$9,089,698
UCF	87	\$35,554,732	\$42,183,580							\$42,183,580	\$77,738,312
UF	94	\$60,349,633	\$71,601,258	\$2,029,772						\$73,631,030	\$133,980,663
UNF	81	\$14,398,239	\$17,082,657							\$17,082,657	\$31,480,896
USF	89	\$35,401,875	\$42,002,225							\$42,002,225	\$77,404,100
UWF	91	\$11,554,588	\$13,708,833	\$1,964,992						\$15,673,825	\$27,228,413
Total		\$295,000,000	\$333,934,571	\$8,032,714	\$8,032,715			\$4,016,358	\$4,016,357	\$350,000,000	\$645,000,000

*Allocation amounts must be determined and approved by the Board in September 2025 and March 2026.

Metric Score Details

Metric 1 Percent of Bachelor's Graduates Employed (earning \$40,000+) and/or Continuing their Education (One Year after Graduation) (10 points)

	FAMU	FAU	FGCU	FIU	FPU	FSU	NCF	UCF	UF	UNF	USF	UWF
Data	69.8%	72.5%	70.5%	76.4%	80.9%	76.2%	64.6%	70.9%	79.4%	72.8%	72.9%	80.1%
	2.9%	1.1%	0.2%	-0.8%	-4.4%	1.1%	8.5%	0.6%	0.4%	0.8%	1.3%	0.3%
Excellence	6	7	6	8	10	8	4	6	9	7	7	10
Improvement	5	2	0	0	0	2	10	1	0	1	2	0
Higher Score	6	7	6	8	10	8	10	6	9	7	7	10

Metric 2 Median Wages of Bachelor's Graduates Employed Full-time One Year After Graduation (10 points)

	FAMU	FAU	FGCU	FIU	FPU	FSU	NCF	UCF	UF	UNF	USF	UWF
Data	\$45,800	51,500	48,900	50,400	66,800	50,300	46,100	51,300	58,200	50,100	48,000	54,000
	4.8%	4.0%	2.5%	1.6%	-1.8%	3.7%	8.5%	1.6%	3.0%	4.2%	-2.0%	1.9%
Excellence	10	10	10	10	10	10	10	10	10	10	10	10
Improvement	9	8	5	3	0	7	10	3	6	8	0	3
Higher Score	10	10	10	10	10	10	10	10	10	10	10	10

Metric 3 Net Tuition & Fees per 120 Credit Hours (10 points)

	FAMU	FAU	FGCU	FIU	FPU	FSU	NCF	UCF	UF	UNF	USF	UWF
Data	\$(1,300)	5,390	8,300	(450)	(9,510)	(2,190)	(19,280)	2,250	(5,820)	4,380	(500)	2,810
	-211%	-9%	-4.6%	-149%	14%	-72%	-180%	-30%	-33%	-16%	-28%	-32%
Excellence	10	10	10	10	10	10	10	10	10	10	10	10
Improvement	10	10	9	10	0	10	10	10	10	10	10	10
Higher Score	10	10	10	10	10	10	10	10	10	10	10	10

Metric 4 Four Year Graduation Rate (Full-Time FTIC) (10 points)

	FAMU	FAU	FGCU	FIU	FPU	FSU	NCF	UCF	UF	UNF	USF	UWF
Data	41.0%	53.2%	45.3%	70.0%	36.8%	75.9%	47.4%	58.7%	78.0%	45.0%	66.0%	53.7%
	6.0%	2.9%	3.0%	5.1%	-4.4%	1.0%	-5.7%	4.5%	1.1%	-3.4%	0.5%	5.6%
Excellence	2	6	3	10	0	10	4	7	10	3	10	6
Improvement	10	5	6	10	0	2	0	9	2	0	1	10
Higher Score	10	6	6	10	0	10	4	9	10	3	10	10

Metric 5 Academic Progress Rate (2nd Year Retention with GPA Above 2.0) (10 points)

	FAMU	FAU	FGCU	FIU	FPU	FSU	NCF	UCF	UF	UNF	USF	UWF
Data	86.3%	82.4%	80.5%	91.5%	74.9%	95.6%	75.6%	91.5%	96.9%	82.7%	89.5%	87.8%
	4.5%	0.5%	1.7%	0.7%	1.3%	0.5%	10.7%	0.4%	0.7%	5.0%	0.4%	1.0%
Excellence	7	3	2	10	0	10	0	10	10	4	9	8
Improvement	9	1	3	1	2	1	10	0	1	10	0	2
Higher Score	9	3	3	10	2	10	10	10	10	10	9	8

Metric 6 Bachelor's Degrees Awarded in Areas of Strategic Emphasis (10 points)

	FAMU	FAU	FGCU	FIU	FPU	FSU	NCF	UCF	UF	UNF	USF	UWF
Data	53.7%	61.3%	53.6%	61.4%	100.0%	57.5%	56.9%	54.7%	59.8%	70.1%	67.7%	60.8%
	-0.6%	0.0%	-0.1%	0.5%	0.0%	1.7%	1.7%	0.1%	0.3%	-0.1%	-0.5%	0.3%
Excellence	10	10	10	10	10	10	10	10	10	10	10	10
Improvement	0	0	0	1	0	3	3	0	0	0	0	0
Higher Score	10	10	10	10	10	10	10	10	10	10	10	10

Metric 7 University Access Rate (Percent of Undergraduates w/ Pell Grant) (10 points)

	FAMU	FAU	FGCU	FIU	FPU	FSU	NCF	UCF	UF	UNF	USF	UWF
Data	56.6%	36.3%	29.4%	50.5%	34.1%	23.7%	35.9%	33.7%	23.2%	32.4%	33.0%	36.3%
	-0.7%	-1.7%	-0.4%	0.2%	-0.8%	-0.7%	4.2%	-1.0%	0.0%	0.0%	-0.9%	0.8%
Excellence	10	8	6	10	8	5	8	7	5	7	7	8
Improvement	0	0	0	0	0	0	8	0	0	0	0	1
Higher Score	10	8	6	10	8	5	8	7	5	7	7	8

Metric 8a Graduate Degrees Awarded in Areas of Strategic Emphasis (10 points)**Metric 8b** Percentage of Newly Admitted FTICs w/ High School GPA of a 4.0 or Higher (NCF only) (10 points)

	FAMU	FAU	FGCU	FIU	FPU	FSU	NCF*	UCF	UF	UNF	USF	UWF
Data	54.0%	69.6%	44.5%	67.1%	100.0%	56.7%	42.1%	60.5%	70.2%	65.8%	73.9%	73.4%
	2.4%	3.5%	-2.6%	2.4%	0.0%	2.4%	-1.5%	0.2%	1.4%	1.4%	0.8%	-0.1%
Excellence	7	10	3	10	10	8	4	10	10	10	10	10
Improvement	4	7	0	4	0	4	0	0	2	2	1	0
Higher Score	7	10	3	10	10	8	4	10	10	10	10	10

*Data and Scores shown for Metric 8b

Metric 9a Three-Year Graduation Rate for Florida College System Associate in Arts Transfer Student (5 points)

	FAMU	FAU	FGCU	FIU	FPU	FSU	NCF	UCF	UF	UNF	USF	UWF
Data	59.6%	59.8%	59.5%	70.6%	25.0%	78.4%	60.7%	52.4%	72.2%	64.5%	66.2%	61.2%
	-0.9%	0.9%	2.0%	0.6%	0.0%	4.0%	4.8%	1.5%	1.8%	1.9%	2.3%	8.9%
Excellence	1	1	1	5	0	5	1	0	5	3	3	2
Improvement	0	0	2	0	0	4	4	1	1	1	2	5
Higher Score	1	1	2	5	0	5	4	1	5	3	3	5

Metric 9b Six-Year Graduation Rate for Students who are Awarded a Pell Grant in their First Year (5 points)

	FAMU	FAU	FGCU	FIU	FPU	FSU	NCF	UCF	UF	UNF	USF	UWF
Data	48.5%	63.2%	52.7%	73.0%	50.5%	82.6%	56.3%	76.1%	86.4%	61.3%	74.7%	53.6%
	-1.3%	-2.4%	1.0%	0.8%	4.1%	2.7%	-5.1%	4.4%	1.1%	-0.7%	1.8%	-3.6%
Excellence	0	1	0	3	0	5	0	4	5	1	3	0
Improvement	0	0	1	0	4	2	0	4	1	0	1	0
Higher Score	0	1	1	3	4	5	0	4	5	1	3	0

Metric 10 Board of Trustees' Choice (10 points)

	FAMU	FAU	FGCU	FIU	FPU	FSU	NCF	UCF	UF	UNF	USF	UWF
Data	327	88	944	274	98.8%	1615	94.4%	40.8%	2454	41.8%	76.1%	68.9%
	13.1%	13.3%	1.0%	4.6%	-0.7%	6.7%	-1.5%	0.2%	5.0%	-1.5%	1.9%	8.3%
Excellence	8	10	10	10	10	10	10	10	9	10	10	10
Improvement	10	10	2	9	0	10	0	0	10	0	3	10
Higher Score	10	10	10	10	10	10	10	10	10	10	10	10

- FAMU Number of Bachelor's Degrees Awarded to Transfers with AA Degrees from FCS
 FAU Total Research Expenditures (in Millions)
 FGCU Number of Bachelor's Degrees Awarded to Hispanic & African-Americans
 FIU Number of Post-Doctoral Appointees
 FPU Percent of Baccalaureate Graduates Completing 2+ Types of High-Impact Practices
 FSU Number of Bachelor's Graduates who passed an Entrepreneurship Class
 NCF Percent of FTIC Graduates Completing 3+ High-Impact Practices
 UCF Percent of Bachelor's Degrees Awarded to African American and Hispanic Students
 UF Endowment Size
 UNF 10j. Percent of Undergraduate FTE in Online Courses
 USF 10k. 6-Year Graduation Rates
 UWF 10l. Percent of Baccalaureate Graduates Completing 2+ Types of High-Impact Practices

Metric Benchmarks

Metrics 1 – 8b:

Points:	10	9	8	7	6	5	4	3	2	1
Metrics:										
1. Percent of Bachelor's Graduates Employed (\$40,000+) and/or Continuing their Education Further 1 Yr after Graduation	80%	77%	74%	71%	68%	65%	62%	59%	56%	53%
2. Median Wages of Bachelor's Graduates Employed Full-time One Year After Graduation	\$43,200	\$40,700	\$38,200	\$35,700	\$33,200	\$30,700	\$28,200	\$25,700	\$23,200	\$20,700
3. Net Tuition & Fees per 120 Credit Hours	\$9,000	\$10,000	\$11,000	\$12,000	\$13,000	\$14,000	\$15,000	\$16,000	\$17,000	\$18,000
4. Four Year Graduation Rate (Full-time FTIC)	65%	62%	59%	56%	53%	50%	47%	44%	41%	38%
5. Academic Progress Rate (2 nd Year Retention with GPA Above 2.0)	90.0%	88.8%	87.5%	86.3%	85%	83.8%	82.5%	81.3%	80.0%	78.8%
6. Bachelor's Degree's Awarded in Areas of Strategic Emphasis	50.0%	47.5%	45.0%	42.5%	40.0%	37.5%	35.0%	32.5%	30%	27.5%
7. University Access Rate (Percent of Undergraduates with a Pell Grant)	42%	38%	34%	30%	26%	22%	18%	14%	10%	6%
8a. Graduate Degrees Awarded in Areas of Strategic Emphasis	60.0%	57.5%	55.0%	52.5%	50.0%	47.5%	45.0%	42.5%	40.0%	37.5%
8b. Percentage of Newly Admitted FTICs with High School GPA of a 4.0 or Higher (NCF only)	70.0%	65.0%	60.0%	55.0%	50.0%	45.0%	40.0%	35.0%	30.0%	25.0%

Improvement Points:	10	9	8	7	6	5	4	3	2	1
Percent Improvement:	5.0%	4.5%	4.0%	3.5%	3.0%	2.5%	2.0%	1.5%	1.0%	0.5%

Metrics 9a – 9b:

Points:	5	4	3	2	1
Metrics:					
9a. Three-Year Graduation Rate for FCS Associate in Arts Transfer Students	70%	67%	64%	61%	58%
9b. Six-Year Graduation Rate for Students who are Awarded a Pell Grant in their First Year	80%	75%	70%	65%	60%

Improvement Points:	5	4	3	2	1
Percent Improvement:	5.0%	4.0%	3.0%	2.0%	1.0%

Metric 10:

Points:	10	9	8	7	6	5	4	3	2	1
Metrics:										
10a. FAMU - Number of Bachelor's Degrees Awarded to Transfers with AA Degrees from FCS	350	330	310	290	270	250	230	210	190	170
10b. FAU - Total Research Expenditures (in Millions)	\$75	\$72	\$69	\$66	\$63	\$60	\$57	\$54	\$51	\$48
10c. FGCU - Number of Bachelor's Degrees Awarded to Hispanic & African-Americans	820	780	740	700	660	620	580	540	520	500
10d. FIU - Number of Post-Doctoral Appointees	271	259	247	235	223	211	199	187	175	163
10e. FL Poly - Percent of Bachelor Degree Graduates with 2+ Workforce Experiences	76%	75%	74%	73%	72%	71%	70%	69%	68%	67%
10f. FSU - Number of Bachelor's Graduates who passed an Entrepreneurship Class	1,360	1,275	1,190	1,105	1,020	935	850	765	680	595
10g. NCF - Percent of FTIC Graduates Completing 3+ High-Impact Practices	67%	63%	59%	55%	51%	47%	43%	39%	35%	31%
10h. UCF - Percent of Bachelor's Degrees Awarded to African-American and Hispanic Students	40%	39%	38%	37%	36%	35%	34%	33%	32%	31%
10i. UF - Endowment Size (in Millions)	2,600	2,350	2,100	1,850	1,600	1,350	1,100	850	600	350
10j. UNF - Percent of Undergraduate FTE in Online Courses	27%	26%	25%	24%	23%	22%	21%	20%	19%	18%
10k. USF - 6-Year Graduation Rates	74%	73%	72%	71%	70%	69%	68%	67%	66%	65%
10l. UWF - Percent of Baccalaureate Graduates Completing 2+ Types of High-Impact Practices	51%	47%	43%	39%	35%	31%	27%	23%	19%	15%
Improvement Points:	10	9	8	7	6	5	4	3	2	1
Percent Improvement:	5.0%	4.5%	4.0%	3.5%	3.0%	2.5%	2.0%	1.5%	1.0%	0.5%

Score Status

	2023 Score*	2024 Score	2025 Score	Status
FAMU	78 / 78	72	83	Increase
FAU	77 / 82	84	76	Watchlist
FGCU	72 / 74	63	67	Below 70
FIU	94 / 95	96	96	Top 3
FL Poly	86 / 86	74	74	Same Score
FSU	92 / 94	89	91	Top 3 (tie)
NCF	65 / 65	71	80	Increase
UCF	87 / 89	85	87	Increase
UF	90 / 90	92	94	Top 3
UNF	77 / 79	76	81	Increase
USF	85 / 90	89	89	Same Score
UWF	82 / 82	84	91	Top 3 (tie)

*Actual Score / Normalized Score

Drop (2 years):

If a university's score decreases for 2 consecutive years, the university may receive up to 100% of its allocation of the state investment after presenting/completing a student success plan. For the current year, there are no scores that have dropped 2 consecutive years.

Score below 70: FGCU

If a university's score is lower than 70 points, the university may receive up to 50% of its allocation of the state investment after presenting/completing a student success plan.

Watch list: FAU

If any of these institutions' scores decrease again next year, the university may receive up to 100% of their allocation of the state investment after presenting/completing a student success plan. Universities on the watch list have a drop in score for 1 year.

Top 3: FIU, UF, FSU (tie) and UWF (tie)

The remaining funds of each institution's state investment shall be distributed to the top three scoring institutions (including ties) based on the total number of points of the top three scoring eligible institutions. This year, FSU and UWF tied for the 3rd highest score.

Fixed Capital Outlay



STATE UNIVERSITY SYSTEM OF FLORIDA
Board of Governors
2025-2026 Fixed Capital Outlay Budget Comparison
June 30, 2025

	University	Project Name	Project Priority List - Total Points ¹	Prior State Funding	Board Statutorily Required PECO List, by Project Priority ¹	House Bill 5001	Senate Bill 2500	Final Approved Budget (reflecting vetoes)
1	USF	Environmental & Oceanographic Sciences Research & Teaching Facility	51	\$ 24,339,226	\$ 30,220,654	\$ 5,000,000	\$ 10,000,000	\$ 10,000,000
2	UF	IFAS Florida 4-H: Camp Cherry Lake Outdoor Learning Center Facilities	44	\$ 900,000	\$ 5,600,000	\$ 2,800,000	\$ 5,600,000	\$ 5,600,000
3	FGCU	Reed Hall Addition, Remodel, and Renovation	33	\$ -	\$ 24,596,845	\$ -	\$ -	\$ -
4	FSU	Kellogg Research Building Remodel	32	\$ 2,300,000	\$ 10,000,000	\$ 5,000,000	\$ 5,000,000	\$ 5,000,000
5	FIU	H. Wertheim College of Medicine Academic Health Sciences/Clinical Facility	31	\$ 105,000,000	\$ 107,383,188	\$ 53,691,594	\$ 21,168,667	\$ 53,691,594
6	FPU	Campus Relocation Remodel Project	27	\$ -	\$ 8,534,922	\$ -	\$ -	\$ -
7	UF	Dental Science Building *	27	\$ 103,647,435	\$ 47,500,000	\$ -	\$ 23,750,000	\$ 47,500,000
8	FSU	Academic Support Bldg. (Maintenance Complex)	25	\$ 40,000,000	\$ 19,118,401	\$ 17,440,000	\$ -	\$ 25,000,000
9	FAU	S.E. Wimberly Library Remodel/Renovation	25	\$ -	\$ -	\$ -	\$ -	\$ -
10	FSU	FAMU-FSU College of Engineering Building C	25	\$ 25,000,000	\$ -	\$ 40,000,000	\$ 40,000,000	\$ 40,000,000
11	FGCU	Wilson G. Bradshaw Library and Annex Remodel/Renovation	23	\$ -	\$ -	\$ -	\$ -	\$ -
12	NCF	Rice Multi-Purpose Building Supporting Enrollment Growth	23	\$ -	\$ -	\$ 5,051,785	\$ -	\$ 5,051,785
13	UNF	Matthews Computer Science Building Remodel	21	\$ -	\$ -	\$ -	\$ -	\$ -
14	FPU	Student Achievement Center	21	\$ 5,698,055	\$ -	\$ 11,117,047	\$ -	\$ 12,000,001
15	FAU	Health Professions Training & Research Facility	21	\$ -	\$ -	\$ 5,000,000	\$ 10,000,000	\$ 10,000,000
16	UWF	Science and Engineering Research Wing	21	\$ 21,122,335	\$ -	\$ -	\$ -	\$ -
17	FAMU	School of Business and Industry South	19	\$ -	\$ -	\$ -	\$ -	\$ -
18	UCF	Howard Phillips Hall Remodel/Renovation	19	\$ -	\$ -	\$ 2,500,000	\$ 8,500,000	\$ 8,500,000
19	FAMU	Chemical and Biological Laboratory Center	17	\$ 14,309,913	\$ -	\$ -	\$ -	\$ -
20	UF	IFAS Microbiology & Cell Sciences Teaching Lab	14	\$ 2,750,000	\$ -	\$ 1,750,000	\$ 3,500,000	\$ 3,500,000
21	FIU	Honors College	11	\$ 11,000,000	\$ -	\$ -	\$ -	\$ -
22	UWF	Student Engagement and Research Center (SERC)	11	\$ -	\$ -	\$ -	\$ -	\$ -
23	UF	Thermal Infrastructure Plant & Distribution Upgrades	9	\$ -	\$ -	\$ -	\$ -	\$ -
24	FSU	Veterans Legacy Complex	8	\$ 17,500,000	\$ -	\$ 12,000,000	\$ -	\$ 20,000,000
25	FSU	Panama City Health - Academic Research Center	6	\$ 4,000,000	\$ -	\$ 5,000,000	\$ -	\$ 5,000,000
26	UCF	Research II	5	\$ -	\$ -	\$ -	\$ -	\$ -
27	FSU	College of Nursing	4	\$ 2,000,000	\$ -	\$ 10,000,000	\$ -	\$ 10,000,000
28	FSU	Arts District	4	\$ 1,467,202	\$ -	\$ 2,500,000	\$ -	\$ 2,500,000
29	NCF	Land Acquisition	3	\$ -	\$ -	\$ -	\$ -	\$ -
30	UCF	Discovery and Innovation Hub - Daytona Campus	2	\$ 20,000,000	\$ -	\$ -	\$ -	\$ 5,000,000
31	USF	Academic Nursing STEM Facility - Sarasota Manatee	0	\$ 3,000,000	\$ -	\$ -	\$ -	\$ -
32	Projects not included in Board Statutorily-Required PECO List							
33	UF	Hamilton Center for Classical and Civic Education	n/a	\$ 47,000,000	\$ -		\$ 350,000	\$ 8,000,000
34	NCF	Dormitory Remediation (reversion of Hamilton Bldg Remodel Chptr 2023-239)	n/a	\$ 6,250,000	\$ 5,882,388	\$ 5,882,388	\$ 5,882,388	\$ 5,882,388
35	FAMU	Campus Security Hardening (HF 3082)				\$ 2,500,000		\$ 2,500,000
36	FAMU	College of Agriculture & Life Sciences, Brooksville (HF 3081)				\$ 2,750,000		\$ 2,000,000
37	FAMU	College of Law Infrastructure Upgrades (HF 3487 & SF 2926)				\$ 5,000,000	\$ 8,000,000	\$ 5,000,000
38	FGCU	Babcock Ranch Learning, Research & Outreach Facility (HF 2127 & SF 3298)				\$ 21,732,277	\$ 24,596,845	\$ 21,732,277
39	FSU	Middleton Center Planning (HF 3399)				\$ 2,500,000		\$ 5,000,000
40	FSU	Moore Auditorium Remodel (HF 2186)				\$ 5,000,000		\$ 5,000,000
41	FSU	Rovetta Business Building Renovation (HF 1465)				\$ 12,500,000		\$ 12,500,000
42	FSU	Tully Remodel Planning (HF 1360 & SF 1549)				\$ 2,500,000	\$ 2,500,000	\$ 2,500,000
43	UF	IFAS Animal Sciences Expansion & Renovation (HF 2991)				\$ 2,750,000	\$ 2,275,000	\$ 2,275,000
44	UF	IFAS Renovation & Expansion Marianna Rec (HF 1933)				\$ 1,000,000	\$ 2,000,000	\$ 2,000,000
45	UF	Norman Fixel Institute for Neurological Diseases (SF 1819)					\$ 25,000,000	\$ 25,000,000
46	UF	Utility Infrastructure (SF 2057)					\$ 350,000	\$ 10,000,000
47	UF	School of Music Building Addition (SF 1184)					\$ 350,000	\$ 5,000,000
48	UNF	Hicks Honors College Academic Building (HF 1614)				\$ 7,418,000		\$ 14,836,000
49	USF	College of AI, Cybersecurity & Computing Facility (HF 2531)				\$ 10,000,000		\$ 10,000,000
50	USF	Health Translational Research Institute Facility (SF 3282)					\$ 13,255,000	\$ 8,000,000
51	USF	Veterans, Military Families & First Responder Service Complexes						\$ 8,500,000
52	UWF	Educational Research Center for Child Development Expansion (HF 2736)				\$ 1,667,400		\$ 1,667,400
53	UWF	Next Gen Innovators with Northwest Florida State College (HF 1748)				\$ 1,500,000		\$ 2,000,000
	Total SUS Named Projects				\$ 258,836,398	\$ 263,550,491	\$ 212,077,900	\$ 427,736,445
54	Total FCO Budget	Maintenance, Repair, Renovation & Remodeling ("Sum of Digits", per s. 1013.64 FS)		\$ -	\$ 81,843,725	\$ -	\$ -	\$ -
55		Special Request to address Deferred Capital Needs backlog of \$1B+		\$ -	\$ 400,000,000	\$ -	\$ -	\$ -
56		Requests from CITF		\$ 50,546,000	\$ 50,384,000	\$ 50,384,000	\$ 50,384,000	\$ 50,384,000
57		Total SUS Projects - per Statutorily-required PECO List, presented in Board's FCO LBR		\$ 410,413,670	\$ 258,836,398	\$ 178,850,426	\$ 127,518,667	\$ 265,843,380
58		Total SUS Projects - Legislative projects		\$ 162,492,365	\$ -	\$ 84,700,065	\$ 84,559,233	\$ 155,225,665
59	Total		\$ 623,452,035	\$ 791,064,123	\$ 313,934,491	\$ 262,461,900	\$ 471,453,045	

* The FY24-25 GAA, Section 273, includes reallocation of \$100M (WPB Global Center) and \$58.3M (Dental Science Bldg), representing federal Coronavirus State Fiscal Recovery Fund funding, from an American Rescue Plan (ARP) appropriation to a non-ARP appropriation category.

1) Points-based prioritization, pursuant to s. 1001.706(12), F.S.

General Appropriations Act 2025-2026



To view the entire 2025-26 GAA, Ch. 2026-198, Laws of Florida

Visit

2025-26 GAA



www.flbog.edu