



2023 System Accountability Plan

Ms. Emily Sikes
Assistant Vice Chancellor, Strategic Initiatives and Economic Development

November 9, 2023

www.flbog.edu

Highlights: 5 Year Trends



↑ 9% pts in overall 4-year grad rates

↑ 12% pts Pell students
4-year grad rates

↑ 5% pts AA transfers
3-year grad rates



More bachelor's grads enrolled or employed

↑ 4% pts since 2019-20



Continued growth in research

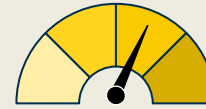
↑ \$420M in research expenditures

PBF 1: Percent of Bachelor's Enrolled or Employed (\$40,000+)



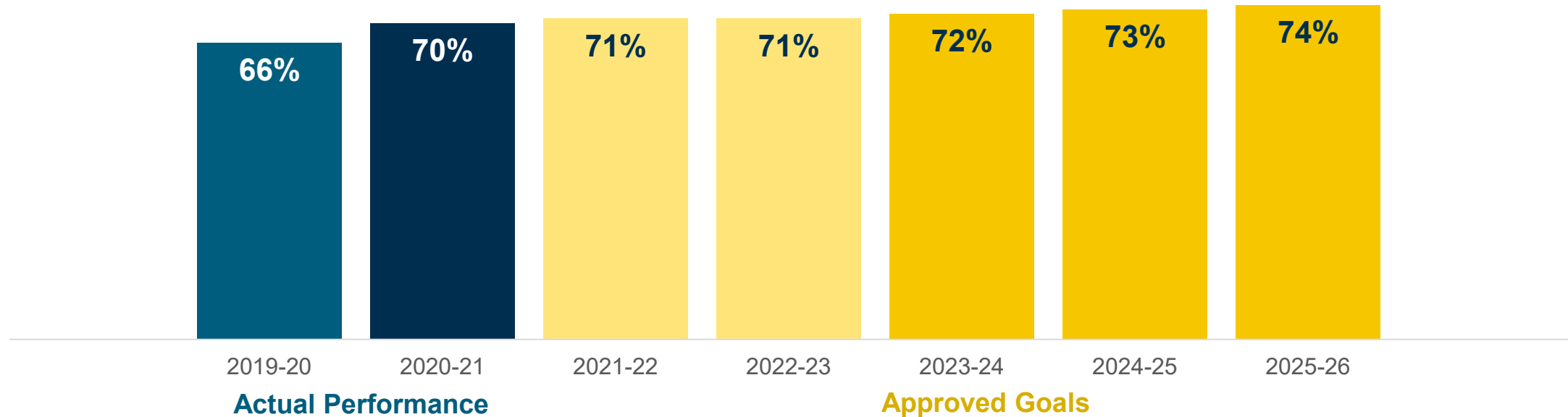
System Rate ↑ **4% pts** • 1-Year Change

Remaining progress to goal: **10% points**



Not on pace to meet 2025 goal

2025 System Goal: 80%

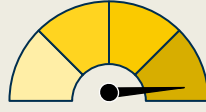


*In November 2022, the Board's Budget and Finance Committee approved a change increase the wage threshold for graduates found employed from \$30,000 to \$40,000

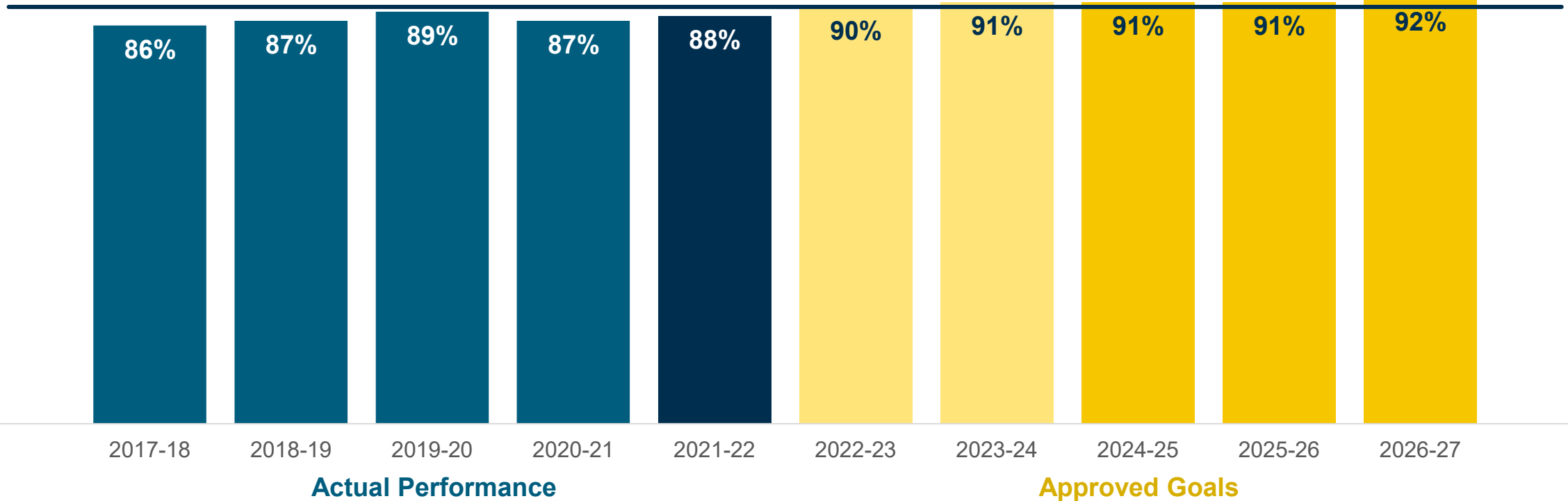
PBF 5: Academic Progress Rate



System Rate | ↑ 2% pts • Last 5 years

Remaining progress to goal: 2% points  On pace to meet 2025 goal

2025 System Goal: 90%

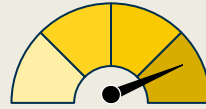


PBF 4: FTIC 4-year Graduation Rate



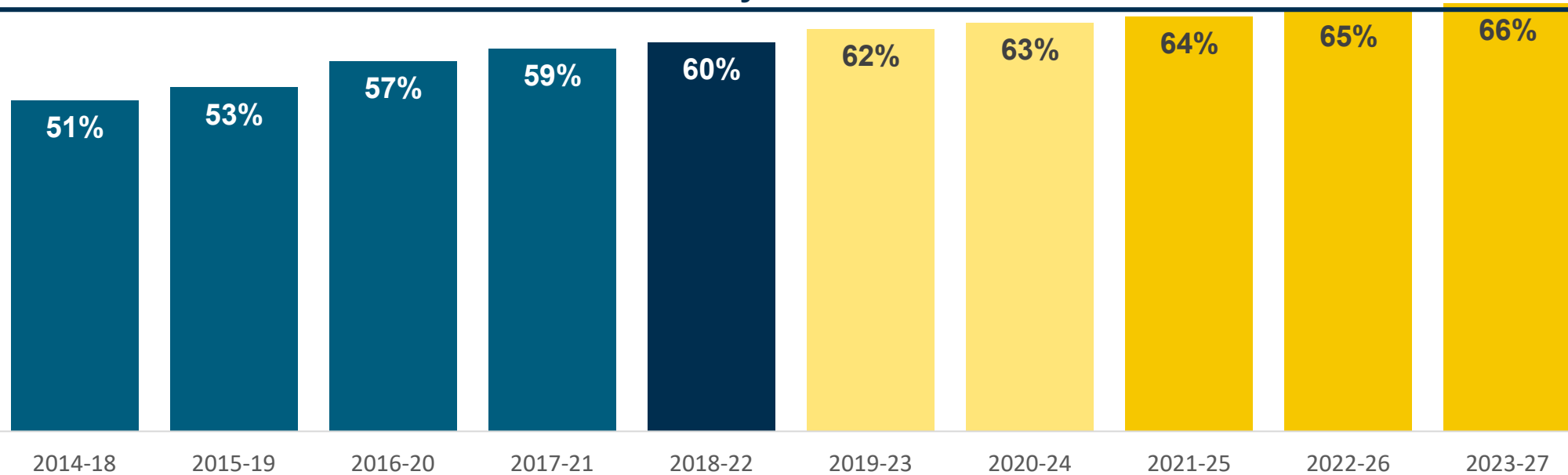
System Rate ↑ **Almost 10% pts** • Last 5 years

Remaining progress to goal: **5% pts**



On pace to meet 2025 goal

2025 System Goal: 65%



Actual Performance

Approved Goals

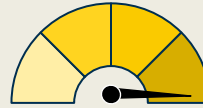
*This metric was based only on FTICs who graduate from the same institution where they started; it doesn't include those who transferred & graduated from another SUS institution.

KPI 7: Pell Recipient 4-year Graduation Rate

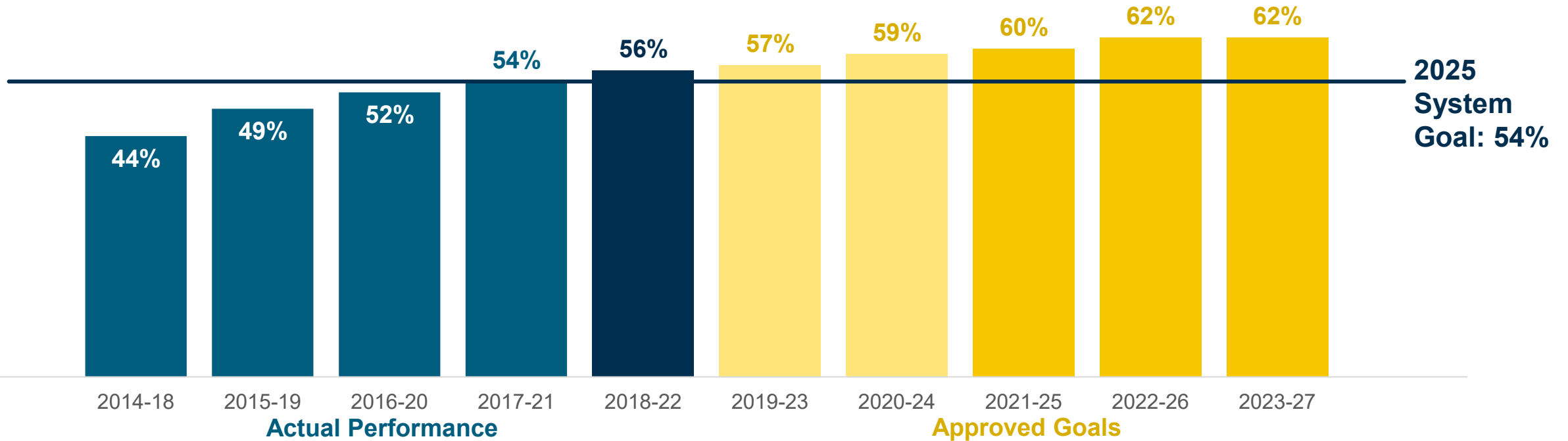


System Rate ↑ 12% pts • Last 5 years

Remaining progress to goal: **None**



Achieved 2025 goal



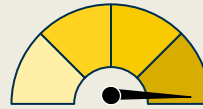
*This metric was based only on FTICs who graduate from the same institution where they started; it doesn't include those who transferred & graduated from another SUS institution.

PBF 9a: FCS AA Transfer 3-year Graduation Rate

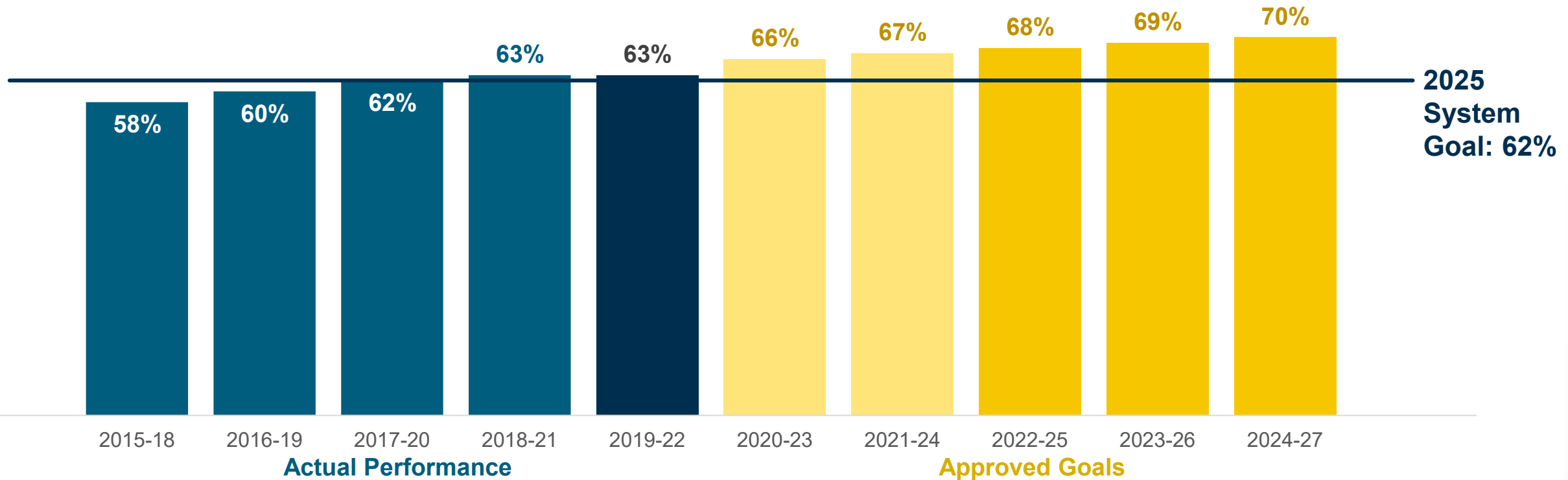


System Rate ↑ 5% pts • Last 5 years

Remaining progress to goal: **None**



Achieved 2025 goal



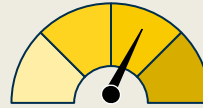
*This metric was based only on FTICs who graduate from the same institution where they started; it doesn't include those who transferred & graduated from another SUS institution.

KPI 18: Total Research Expenditures (Millions)



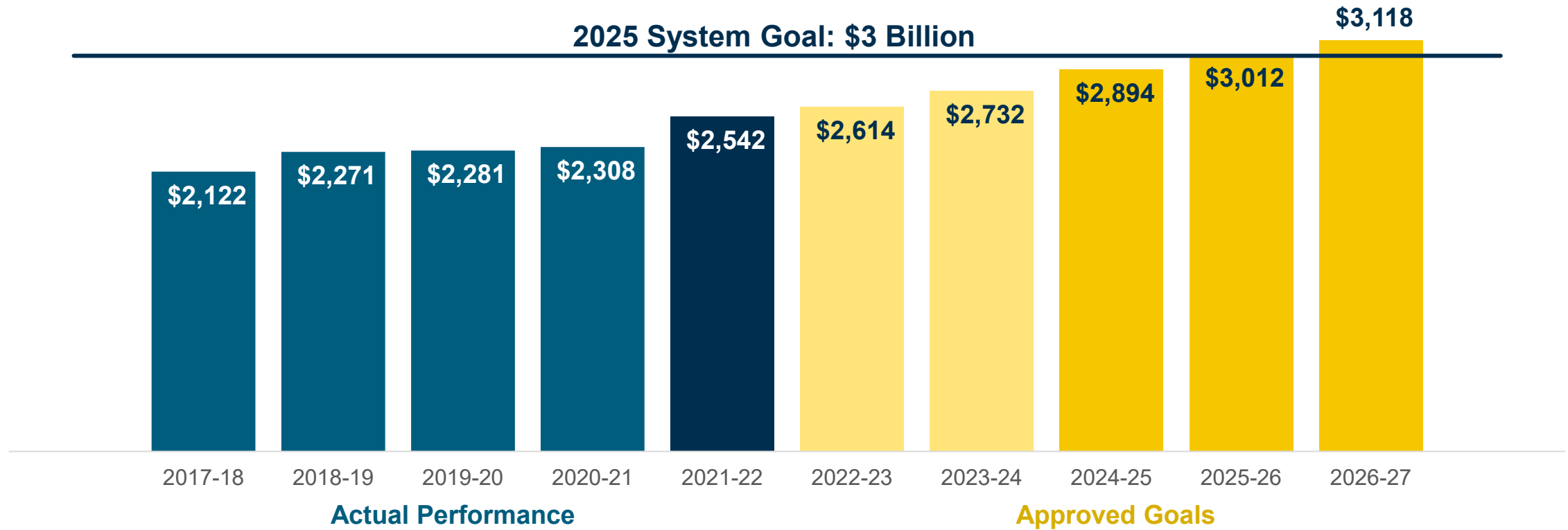
System Rate ↑ \$420 M • Last 5 years

Remaining progress
to goal: \$458 M



On pace to
meet 2025 goal

2025 System Goal: \$3 Billion





The State University System continues to raise the bar for excellence



Excellence in student success

88%

retention rate

60%

4-yr grad rate

Quality SUS degrees

strong post-graduation outcomes



More than half of bachelor's degrees awarded in

Programs of Strategic Emphasis

Over \$2.5 Billion
in total research expenditures



