



Linking Industry to Nursing Education (LINE) Recommendations

Ms. Emily Sikes

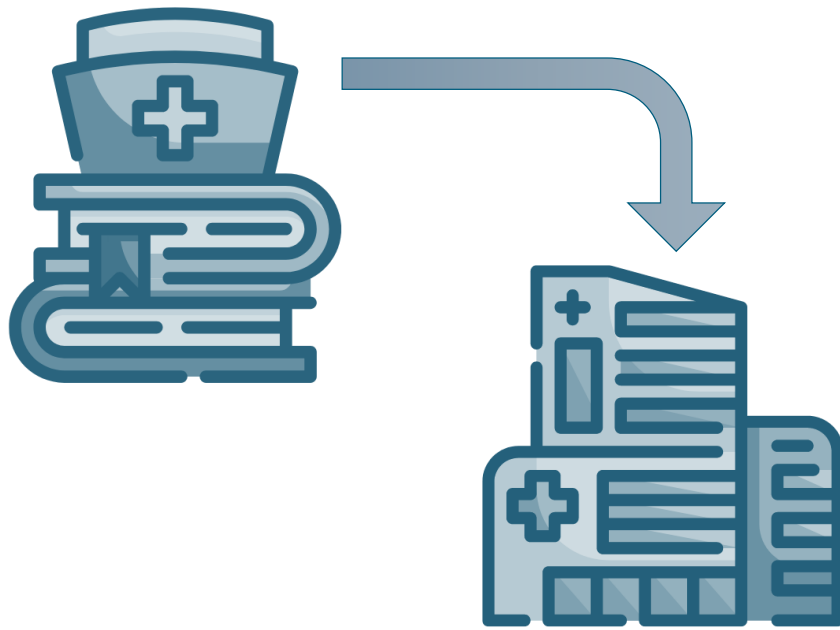
Assistant Vice Chancellor for Strategic Initiatives & Economic Development

August 29, 2023

www.flbog.edu

Section 1009.8962, Florida Statutes

Linking Industry to Nursing Education (**LINE**) Fund



- Incentivize collaboration between nursing education programs & healthcare partners
- The Board of Governors is charged with evaluating & approving program proposals
- Legislature provided a maximum of \$6 million in LINE Funds
- Provides a **dollar-for-dollar match** for contributions from healthcare partners

Allowable Uses of LINE Funds

Section 1009.8962, Florida Statutes



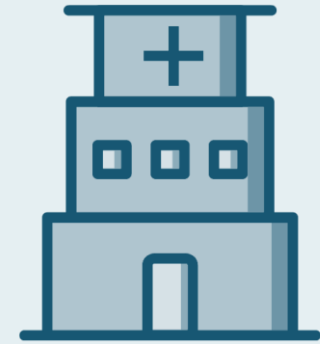
**Student
Scholarships**



**Faculty
Recruitment**



Equipment



**Simulation
Centers**



Funds may **not** be used for the construction of new buildings

Proposal Summary (page 1)



22 proposals
were received
from 8
institutions

	Institution	Healthcare Partner	Amount Requested
1	FAU	Memorial Healthcare System	\$320,000
2	FGCU	Lee Health System	\$500,000
3	FGCU	Naples Community Hospital System	\$50,000
4	FIU	Baptist Health South Florida	\$250,000
5	FIU	Memorial Healthcare System (Faculty)	\$273,000
6	FIU	Memorial Healthcare System (Scholarships)	\$200,000
7	FIU	Nicklaus Children's Hospital	\$100,000
8	FIU	Nicklaus Children's Hospital	\$100,000
9	FSU	HCA Florida Capital Hospital & BayCare Health System	\$212,000
10	FSU	Tallahassee Memorial Healthcare	\$204,895
11	UCF	AdventHealth	\$350,000
12	UCF	Orlando Health	\$350,000
13	UCF	UCF Lake Nona Hospital	\$50,000



List continues on next slide

Proposal Summary (Cont'd)



List continued from prior slide

Institution	Healthcare Partner	Amount Requested
14 UNF	Baptist Health	\$50,000
15 UNF	HCA Healthcare South Atlantic Division	\$128,086
16 UNF	Mayo Clinic	\$200,000
17 USF	Johns Hopkins All Children's Hospital	\$428,972
18 USF	Tampa General Hospital	\$191,250
19 USF	HCA West Florida Division	\$50,000
20 UWF	Ascension Sacred Heart Hospital	\$228,000
21 UWF	Baptist Healthcare	\$37,000
22 UWF	Santa Rosa Medical Center	\$37,800
Total		\$4,311,003





The Legislature allocated \$6 million in possible matching funds for the LINE Program this year



\$1,688,997 remains available for allocation

Uses of Funds Summary



	 Student Scholarships	 Faculty Salary	 Simulation Equipment & Resources	 Clinical Preceptors
FAU	✓	✓		
FGCU	✓	✓	✓	
FIU	✓	✓		
FSU	✓	✓		
UCF	✓		✓	
UNF	✓	✓	✓	
USF	✓	✓	✓	✓
UWF	✓	✓	✓	✓



www.flbog.edu