



Performance-Based Funding Discussion

Budget & Finance Committee
Eric Silagy, Chair

January 24, 2023

www.flbog.edu

Performance-Based Funding Statute



Section 1001.92 State University System Performance-Based Incentive-

(1) A State University System Performance-based Incentive shall be awarded to state universities using performance-based metrics adopted by the Board of Governors of the State University System. Beginning with the Board of Governors' determination of each university's performance improvement and achievement ratings, and the related distribution of annual fiscal year appropriation, the performance-based metrics must include:

- (a) The 4-year graduation rate for first-time-in-college students; **(metric 4)**
- (b) Beginning in fiscal year 2022-2023, the 3-year graduation rate for associate in arts transfer students; **(metric 9a)**
- (c) Retention rates; **(metric 5)**
- (d) Post-graduation education rates; **(metric 1)**
- (e) Degree production; **(metrics 6 and 8a)**
- (f) Affordability; **(metric 3)**
- (g) Post-graduation employment and salaries, including wage thresholds that reflect the added value of a baccalaureate degree; **(metrics 1 and 2)**
- (h) Access rate, based on the percentage of undergraduate students enrolled during the fall term who received a Pell Grant during the fall term; and **(metric 7)**
- (i) Beginning in fiscal year 2021-2022, the 6-year graduation rate for students who are awarded a Pell Grant in their first year. **(metric 9b)**

Performance-based Funding Metrics



1. Percent of Bachelor's Graduates Employed (Earning \$40,000+) or Continuing their Education	6. Bachelor's Degrees Awarded in Areas of Strategic Emphasis
2. Median Wages of Bachelor's Graduates Employed Full-Time	7. University Access Rate (Percent of Undergraduates with a Pell-grant)
3. Average Cost to the Student (Net Tuition per 120 Credit Hours)	8a. Graduate Degrees Awarded in Areas of Strategic Emphasis 8b. Freshmen in Top 10% of Graduating High School Class (NCF & FL Poly only)
4. Four Year Graduation Rate (Full-time FTIC)	9a. 3-Year Graduation Rate for FCS AA Transfer Students 9b. 6-Year Graduation Rate for Students Awarded Pell Grants 9b.1. Academic Progress Rate for Pell Students (FL Poly only)
5. Academic Progress Rate (2nd Year Retention with GPA Above 2.0)	10. Board of Trustees Choice



Metric 1: Percent of Bachelor's Graduates Employed (\$40,000+) and/or Continuing their Education Further 1 Yr after Graduation

Background

- The Board of Governors included a post-graduation metric goal in its 2012-2025 Strategic Plan that was approved in 2011. In January of 2014, the Board of Governors approved a Performance-based Funding model that included two post-graduation metrics within one year of graduation (Metrics 1 and 2).
- Section 1001.92(1) the performance-based metrics must include: (d) Post-graduation education rates; (g) Post-graduation employment and salaries, including wage thresholds that reflect the added value of a baccalaureate degree

Definition and Data Sources

- This metric is based on the percentage of a graduating class of bachelor's degree recipients who are enrolled or employed (earning at least \$40,000) somewhere in the United States. Students who do not have valid social security numbers and are not found enrolled are excluded. This data now includes: non-Florida data from all states and districts, including the District of Columbia and Puerto Rico; and military enlistment as reported by the institutions.
- Data Sources: State University Database System (SUDS), Florida Department of Economic Opportunity (DEO) analysis of State Wage Interchange System (SWIS), and National Student Clearinghouse (NSC).

Metric Changes

June Board Meeting		2014	2015	2016	2017	2018	2019	2020	2021	2022	2023
Allocation Fiscal Year		2014-15	2015-16	2016-17	2017-18	2018-19	2019-20	2020-21	2021-22	2022-23	2023-24
1	% Enrolled or Employed FT (FL)	•
	% Enrolled or Employed FT (US)	.	•	•
	% Enrolled/Employed (\$25,000+)	.	.	.	•	•	•	•	•	.	.
	% Enrolled/Employed (\$30,000+)	•	.
	% Enrolled/Employed (\$40,000+)	•



Metric 1: Percent of Bachelor's Graduates Employed (\$40,000+) and/or Continuing their Education Further 1 Yr after Graduation

Most Recent Data:

2022-23		FAMU	FAU	FGCU	FIU	FL Poly	FSU	NCF	UCF	UF	UNF	USF	UWF
1. Percent of Bachelor's Graduates Employed (earning \$30,000+) and/or Continuing their Education (1 Yr after Graduation)	Excellence	62.5%	64.2%	64.7%	65.7%	69.6%	65.9%	52.5%	63.0%	70.1%	65.3%	65.2%	72.5%
	Improvement	0.6%	-1.6%	0.1%	-2.6%	-2.8%	0.2%	4.4%	-0.6%	-1.7%	-1.7%	-1.3%	-2.2%

Score History:

Metric	FAMU	FAU	FGCU	FIU	FL Poly	FSU	NCF	UCF	UF	UNF	USF	UWF
2022-23	4	4	4	5	6	5	8	4	6	5	5	7
2021-22	8	9	9	9	10	8	0	8	10	9	9	10
2020-21	6	8	8	9	NA	7	10	8	9	9	9	10

Scores in black are based on excellence. Scores in orange are based on improvement.

Raw scores – these scores are not normalized.

2022-23 Benchmarks:

Excellence Points	10	9	8	7	6	5	4	3	2	1
1. Percent of Bachelor's Graduates Employed (earning \$30,000+) and/or Continuing their Education (1 Yr after Graduation)	80%	77%	74%	71%	68%	65%	62%	59%	56%	53%
Improvement Points	10	9	8	7	6	5	4	3	2	1
% Improvement	5.0%	4.5%	4.0%	3.5%	3.0%	2.5%	2.0%	1.5%	1.0%	0.5%

Strategic Plan Goal: 80%



Metric 2: Median Wages of Bachelor's Graduates Employed Full-time One Year After Graduation

Background

- The Board of Governors included a post-graduation metric goal in its 2012-2025 Strategic Plan that was approved in 2011. In January 2014, the Board of Governors approved a Performance-based Funding model that included two post-graduation metrics within one year of graduation (Metrics 1 and 2).
- Section 1001.92(1) the performance-based metrics must include: (g) Post-graduation employment and salaries, including wage thresholds that reflect the added value of a baccalaureate degree

Definition and Data Sources

- This metric is based on annualized Unemployment Insurance (UI) wage data from the fourth fiscal quarter after graduation for bachelor's recipients. This data does not include individuals who are self-employed, employed by the military, those without a valid social security number, or making less than minimum wage. This data now includes non-Florida data from all states and districts, including the District of Columbia and Puerto Rico.
- Sources: State University Database System (SUDS), Florida Department of Economic Opportunity (DEO) analysis of State Wage Interchange System (SWIS).

Metric Changes

June Board Meeting		2014	2015	2016	2017	2018	2019	2020	2021	2022	2023
Allocation Fiscal Year		2014-15	2015-16	2016-17	2017-18	2018-19	2019-20	2020-21	2021-22	2022-23	2023-24
2	Median FT Wage in Florida	•	•	•
	Median FT Wage in U.S.	.	.	.	•	•	•	•	•	•	•



Metric 2: Median Wages of Bachelor's Graduates Employed Full-time One Year After Graduation

Most Recent Data:

2022-23		FAMU	FAU	FGCU	FIU	FL Poly	FSU	NCF	UCF	UF	UNF	USF	UWF
2. Median Wages of Bachelor's Graduates Employed Full-time One Year After Graduation	Excellence	\$37,000	\$41,500	\$40,200	\$40,800	\$ 54,400	\$40,300	\$32,400	\$42,300	\$48,500	\$42,900	\$41,300	\$45,500
	Improvement	7.0%	1.0%	0.0%	0.0%	-3.0%	-2.0%	-11.0%	0.0%	0.0%	5.0%	1.0%	1.0%

Score History:

Metric	FAMU	FAU	FGCU	FIU	FL Poly	FSU	NCF	UCF	UF	UNF	USF	UWF
2022-23	10	10	9	10	10	9	6	10	10	10	10	10
2021-22	7	10	9	10	10	10	10	10	10	10	10	10
2020-21	10	9	9	9	NA	9	10	9	10	9	9	10

Scores in black are based on excellence. Scores in orange are based on improvement.

2022-23 Benchmarks:

Excellence Points	10	9	8	7	6	5	4	3	2	1
2. Median Wages of Bachelor's Graduates Employed Full-time One Year After Graduation	\$40,700	\$38,200	\$35,700	\$33,200	\$30,700	\$28,200	\$25,700	\$23,200	\$20,700	\$18,200
Improvement Points	10	9	8	7	6	5	4	3	2	1
% Improvement	5.0%	4.5%	4.0%	3.5%	3.0%	2.5%	2.0%	1.5%	1.0%	0.5%

Strategic Plan Goal: \$43,200



Metric 3: Net Tuition & Fees per 120 Credit Hours

Background

- The original metric, Cost per Bachelor’s Degree, focused on the Cost to the Institution. In 2015, the Board took suggestions for a possible alternative methodology that would enhance how the Cost of a Bachelor’s Degree was calculated. After meetings with university representatives, university proposals for alternative metrics were considered. The Board decided to use a Cost to the Student metric that was largely based on a 2013 report from the Cost-per-Degree Workgroup.
- Section 1001.92(1) the performance-based metrics must include: (f) affordability

Definition and Data Sources

- This metric compares the average sticker price and the average gift aid amount. The sticker price includes: (1) tuition and fees for resident undergraduates; (2) books and supplies (as calculated by the College Board); and (3) the average number of credit hours attempted by students who were admitted as an FTIC student who graduated with a bachelor’s degree from a program that requires only 120 credit hours. The gift aid amount includes: financial aid (grants, scholarships, waivers and third-party payments) provided to resident undergraduate students during the most recent academic year. The average gift aid award per credit hour was multiplied by 120 and compared to the sticker price.



- Sources: State University Database System (SUDS), the Legislature’s annual General Appropriations Act, and university required fees.

Metric Changes:

June Board Meeting		2014	2015	2016	2017	2018	2019	2020	2021	2022	2023
Allocation Fiscal Year		2014-15	2015-16	2016-17	2017-18	2018-19	2019-20	2020-21	2021-22	2022-23	2023-24
3	Cost of Bachelor’s Degree to the Institution	•	•	•
	Cost of Bachelor’s Degree to the Student	.	.	.	•	•	•	•	•	•	•



Metric 3: Net Tuition & Fees per 120 Credit Hours

Most Recent Data:

2022-23		FAMU	FAU	FGCU	FIU	FL Poly	FSU	NCF	UCF	UF	UNF	USF	UWF
3. Net Tuition & Fees per 120 Credit Hours	Excellence	\$ (630)	\$ 6,100	\$ 8,740	\$ 2,970	\$(12,160)	\$ (900)	\$(4,310)	\$ 4,110	\$(6,040)	\$ 5,790	\$ (620)	\$ 4,000
	Improvement	-127.0%	-21.0%	0.0%	-25.0%	-61.0%	-218.0%	-116.0%	-12.0%	-61.0%	-29.0%	-134.0%	-23.0%

Score History:

Metric	FAMU	FAU	FGCU	FIU	FL Poly	FSU	NCF	UCF	UF	UNF	USF	UWF
2022-23	10	10	10	10	10	10	10	10	10	10	10	10
2021-22	10	10	10	10	10	10	10	10	10	10	10	10
2020-21	10	10	10	10	NA	10	10	10	10	10	10	10

Scores in black are based on excellence. Scores in orange are based on improvement.

2022-23 Benchmarks:

Excellence Points	10	9	8	7	6	5	4	3	2	1
3. Net Tuition & Fees per 120 Credit Hours	\$9,000	\$10,000	\$11,000	\$12,000	\$13,000	\$14,000	\$15,000	\$16,000	\$17,000	\$18,000
Improvement Points	10	9	8	7	6	5	4	3	2	1
% Improvement	5.0%	4.5%	4.0%	3.5%	3.0%	2.5%	2.0%	1.5%	1.0%	0.5%

No Strategic Plan Goal



Metric 4: Four Year Graduation Rate (Full-Time FTIC)

Background

- The national standard graduation rate was created by the Student Right to Know Act of 1990, which required institutions of higher education receiving federal financial assistance to report graduation rates to current and prospective students via the US Department of Education's Integrated Postsecondary Education Data System (IPEDS). This act established the graduation rate for first-time in college (FTIC) students based on 150% of the normal time for completion from the program - which is six years for a four-year program. In 2011, the Board included retention and graduation rate metrics in its 2012-2025 System Strategic Plan.
- In 2014, the importance of the graduation rate data was further elevated by the Board's inclusion of this metric in the PBF Model. In 2018, the Florida Legislature changed the FTIC graduation rate metric included in PBF from a six-year to a four-year measure.
- Section 1001.92(1) the performance-based metrics must include: (a) The 4-year graduation rate for first-time-in-college students;

Definition and Data Source

- This metric is based on the percentage of full-time first-time-in-college (FTIC) students who started in the Fall (or summer continuing to Fall) term and were enrolled full-time in their first semester and had graduated from the same institution by the summer term of their fourth year. FTIC includes 'early admit' students who were admitted as a degree-seeking student prior to high school graduation. Students who were enrolled in advanced graduate programs during their 4th year were excluded.
- Source: State University Database System (SUDS).

Metric Changes:

June Board Meeting		2014	2015	2016	2017	2018	2019	2020	2021	2022	2023
Allocation Fiscal Year		2014-15	2015-16	2016-17	2017-18	2018-19	2019-20	2020-21	2021-22	2022-23	2023-24
4	FTIC Grad Rate (6yr)
	FTIC Grad Rate (4yr)



Metric 4: Four Year Graduation Rate (Full-Time FTIC)

Most Recent Data:

2022-23		FAMU	FAU	FGCU	FIU	FL Poly	FSU	NCF	UCF	UF	UNF	USF	UWF
4. Four Year Graduation Rate (Full-Time FTIC)	Excellence	27.0%	49.8%	42.1%	59.4%	38.2%	72.7%	55.3%	50.0%	74.7%	48.3%	62.5%	47.4%
	Improvement	-7.6%	2.3%	0.7%	10.1%	3.9%	-1.1%	1.4%	2.3%	4.0%	0.0%	1.6%	11.0%

Score History:

Metric	FAMU	FAU	FGCU	FIU	FL Poly	FSU	NCF	UCF	UF	UNF	USF	UWF
2022-23	0	4	2	10	7	10	6	5	10	4	9	10
2021-22	10	10	10	10	0	10	10	8	10	8	10	3
2020-21	10	7	10	7	NA	10	10	7	10	10	10	7

Scores in black are based on excellence. Scores in orange are based on improvement.

Raw scores – these scores are not normalized.

2022-23 Benchmarks:

Excellence Points	10	9	8	7	6	5	4	3	2	1
4. Four Year Graduation Rate (Full-Time FTIC)	65%	62%	59%	56%	53%	50%	47%	44%	41%	38%
Improvement Points	10	9	8	7	6	5	4	3	2	1
% Improvement	5.0%	4.5%	4.0%	3.5%	3.0%	2.5%	2.0%	1.5%	1.0%	0.5%

Strategic Plan Goal: 65%



Metric 5: Academic Progress Rate - 2nd Year Retention with GPA Above 2.0

Background

- In 2011, the Board included a retention rate metric in its 2012-2025 System Strategic Plan. In 2014, the importance of the retention rate data was further elevated by their inclusion of the metric in the PBF Model.
- Section 1001.92(1) the performance-based metrics must include: (c) Retention rates;

Definition and Data Source

- This metric is based on the percentage of first-time-in-college (FTIC) students who started in the Fall (or summer continuing to Fall) term and were enrolled full-time in their first semester and were still enrolled in the same institution during the next Fall term with a grade point average (GPA) of at least 2.0 at the end of their first year (Fall, Spring, Summer).
- Source: State University Database System (SUDS).

Metric Changes:

June Board Meeting	2014	2015	2016	2017	2018	2019	2020	2021	2022	2023
Allocation Fiscal Year	2014-15	2015-16	2016-17	2017-18	2018-19	2019-20	2020-21	2021-22	2022-23	2023-24
5 Academic Progress Rate	•	•	•	•	•	•	•	•	•	•



Metric 5: Academic Progress Rate - 2nd Year Retention with GPA Above 2.0

Most Recent Data:

2022-23		FAMU	FAU	FGCU	FIU	FL Poly	FSU	NCF	UCF	UF	UNF	USF	UWF
5. Academic Progress Rate - 2 nd Year Retention with GPA Above 2.0	Excellence	84.2%	78.0%	76.8%	89.2%	64.2%	92.9%	78.8%	90.5%	95.5%	73.9%	86.4%	80.8%
	Improvement	2.0%	-3.0%	0.1%	-1.2%	-12.4%	-0.7%	-1.5%	-0.9%	-0.8%	-7.4%	-3.5%	-1.4%

Score History:

Metric	FAMU	FAU	FGCU	FIU	FL Poly	FSU	NCF	UCF	UF	UNF	USF	UWF
2022-23	5	0	0	9	0	10	1	10	10	0	7	2
2021-22	10	3	3	10	10	10	2	10	10	3	9	3
2020-21	3	1	5	8	NA	10	10	10	10	4	8	2

Scores in black are based on excellence. Scores in orange are based on improvement.

2022-23 Benchmarks:

Excellence Points	10	9	8	7	6	5	4	3	2	1
5. Academic Progress Rate - 2 nd Year Retention with GPA Above 2.0	90%	88.8%	87.5%	86.3%	85%	83.8%	82.5%	81.3%	80%	78.8%
Improvement Points	10	9	8	7	6	5	4	3	2	1
% Improvement	5.0%	4.5%	4.0%	3.5%	3.0%	2.5%	2.0%	1.5%	1.0%	0.5%

Strategic Plan Goal: 90%



Metric 6: Bachelor's Degrees Awarded in Areas of Strategic Emphasis

Background

- The Board approves a methodology document that is used to generate a list of Programs of Strategic Emphasis (PSE) to promote the alignment of the State University System degree program offerings with the economic development and workforce needs of the State. The Board has updated the methodology document several times to reflect that Florida's workforce needs change over time. The last update occurred in January 2020.
- Section 1001.92(1) the performance-based metrics must include: (e) Degree production;

Definition and Data Source

- This metric is based on the number of baccalaureate degrees awarded within the programs designated by the Board of Governors as 'Programs of Strategic Emphasis'. A student who has multiple majors in the subset of targeted Classification of Instruction Program codes will be counted twice (i.e., double-majors are included).
- Source: State University Database System (SUDS).

Metric Changes:

June Board Meeting	2014	2015	2016	2017	2018	2019	2020	2021	2022	2023
Allocation Fiscal Year	2014-15	2015-16	2016-17	2017-18	2018-19	2019-20	2020-21	2021-22	2022-23	2023-24
6 % Bachelor's PSE Degrees	•	•	•	•	•	•	•	•	•	•



Metric 6: Bachelor's Degrees Awarded in Areas of Strategic Emphasis

Most Recent Data:

2022-23		FAMU	FAU	FGCU	FIU	FL Poly	FSU	NCF	UCF	UF	UNF	USF	UWF
6. Bachelor's Degrees Awarded in Areas of Strategic Emphasis	Excellence	53.9%	58.3%	55.4%	57.5%	100.0%	50.3%	46.2%	55.5%	60.8%	66.5%	68.1%	64.4%
	Improvement	6.7%	5.5%	3.2%	7.0%	0.0%	7.1%	-11.7%	2.6%	2.0%	9.5%	4.6%	5.0%

Score History:

Metric	FAMU	FAU	FGCU	FIU	FL Poly	FSU	NCF	UCF	UF	UNF	USF	UWF
2022-23	10	10	10	10	10	10	8	10	10	10	10	10
2021-22	8	10	10	10	10	7	10	10	10	10	10	10
2020-21	9	10	10	8	NA	7	10	10	10	10	10	10

Scores in black are based on excellence. Scores in orange are based on improvement.

2022-23 Benchmarks:

Excellence Points	10	9	8	7	6	5	4	3	2	1
6. Bachelor's Degrees Awarded in Areas of Strategic Emphasis	50%	47.5%	45%	42.5%	40%	37.5%	35%	32.5%	30%	27.5%
Improvement Points	10	9	8	7	6	5	4	3	2	1
% Improvement	5.0%	4.5%	4.0%	3.5%	3.0%	2.5%	2.0%	1.5%	1.0%	0.5%

Strategic Plan Goal: 50%



Metric 7: University Access Rate - Percent of Undergraduates with a Pell Grant

Background

- The Board included the University Access Rate in the PBF model to help preserve access for students from low-income families.
- Section 1001.92(1) the performance-based metrics must include: (h) Access rate, based on the percentage of undergraduate students enrolled during the fall term who received a Pell Grant during the fall term;

Definition and Data Source

- This metric is based on the number of undergraduates, enrolled during the fall term, who received a Pell grant during the fall term. Students who were not eligible for Pell grants (e.g., Unclassified, non-resident aliens, post-baccalaureates) were excluded from the denominator for this metric.
- Source: State University Database System (SUDS).

Metric Changes:

June Board Meeting	2014	2015	2016	2017	2018	2019	2020	2021	2022	2023
Allocation Fiscal Year	2014-15	2015-16	2016-17	2017-18	2018-19	2019-20	2020-21	2021-22	2022-23	2023-24
7 Access Rate	•	•	•	•	•	•	•	•	•	•



Metric 7: University Access Rate - Percent of Undergraduates with a Pell Grant

Most Recent Data:

2022-23		FAMU	FAU	FGCU	FIU	FL Poly	FSU	NCF	UCF	UF	UNF	USF	UWF
7. University Access Rate (Percent of Undergraduates with a Pell Grant)	Excellence	59.3%	39.6%	30.6%	50.1%	33.1%	26.3%	30.4%	35.9%	24.7%	30.8%	35.4%	35.7%
	Improvement	-3.6%	-1.9%	-1.9%	-0.8%	-0.7%	-0.9%	2.0%	-1.7%	-1.1%	-0.4%	-2.6%	-1.5%

Score History:

Metric	FAMU	FAU	FGCU	FIU	FL Poly	FSU	NCF	UCF	UF	UNF	USF	UWF
2022-23	10	9	7	10	7	6	7	8	5	7	8	8
2021-22	10	9	7	10	8	6	6	8	5	7	9	8
2020-21	10	10	7	10	NA	6	7	9	6	7	9	9

Scores in black are based on excellence. Scores in orange are based on improvement.

2022-23 Benchmarks:

Excellence Points	10	9	8	7	6	5	4	3	2	1
6. Bachelor's Degrees Awarded in Areas of Strategic Emphasis	42%	38%	34%	30%	26%	22%	18%	14%	10%	6%
Improvement Points	10	9	8	7	6	5	4	3	2	1
% Improvement	5.0%	4.5%	4.0%	3.5%	3.0%	2.5%	2.0%	1.5%	1.0%	0.5%

No Strategic Plan Goal



Metric 8a: Graduate Degrees Awarded in Areas of Strategic Emphasis

Background

- This metric coincides with Metric 6, Bachelor’s Degrees Awarded in Areas of Strategic Emphasis. This is the only metric that recognizes graduate degrees earned.
- Currently, New College of Florida and Florida Polytechnic University are not included in this metric because they have not met the minimum threshold of 25 graduate degrees awarded set by the Board. However, FL Poly now meets the threshold and will be included in this metric beginning in the upcoming 2023-24 cycle.
- Section 1001.92(1) the performance-based metrics must include: (e) Degree production;

Definition and Data Source

- This metric is based on the number of graduate degrees awarded within the programs designated by the Board of Governors as ‘Programs of Strategic Emphasis’. A student who has multiple majors in the subset of targeted Classification of Instruction Program codes will be counted twice (i.e., double-majors are included).
- Source: State University Database System (SUDS).

Metric Changes:

June Board Meeting	2014	2015	2016	2017	2018	2019	2020	2021	2022	2023
Allocation Fiscal Year	2014-15	2015-16	2016-17	2017-18	2018-19	2019-20	2020-21	2021-22	2022-23	2023-24
8 % Graduate PSE Degrees	•	•	•	•	•	•	•	•	•	•



Metric 8a: Graduate Degrees Awarded in Areas of Strategic Emphasis

Most Recent Data:

2022-23		FAMU	FAU	FGCU	FIU	FL Poly	FSU	NCF	UCF	UF	UNF	USF	UWF
8a. Graduate Degrees Awarded in Areas of Strategic Emphasis	Excellence	47.3%	66.5%	64.5%	63.8%	NA	59.9%	NA	57.9%	70.0%	57.8%	70.4%	65.4%
	Improvement	2.7%	0.8%	-1.2%	3.8%	NA	1.1%	NA	-2.6%	2.5%	5.9%	-1.0%	1.8%

Score History:

Metric	FAMU	FAU	FGCU	FIU	FL Poly	FSU	NCF	UCF	UF	UNF	USF	UWF
2022-23	5	10	10	10	NA	9	NA	9	10	10	10	10
2021-22	3	10	10	10	NA	9	NA	10	10	6	10	10
2020-21	6	10	10	8	NA	9	NA	10	10	7	10	8

Scores in black are based on excellence. Scores in orange are based on improvement.

2022-23 Benchmarks:

Excellence Points	10	9	8	7	6	5	4	3	2	1
8a. Graduate Degrees Awarded in Areas of Strategic Emphasis	60%	57.5%	55%	52.5%	50%	47.5%	45%	42.5%	40%	37.5%
Improvement Points	10	9	8	7	6	5	4	3	2	1
% Improvement	5.0%	4.5%	4.0%	3.5%	3.0%	2.5%	2.0%	1.5%	1.0%	0.5%

Strategic Plan Goal: 60%

Metric 8b: Freshman in Top 10% of Graduating High School Class



Background

- Metric 8b was chosen for New College of Florida in year one of Performance-Based Funding. The metric was chosen to encourage them to attract the best FTIC students. Florida Poly has participated in this metric for two years.
- Beginning with the upcoming 2023-24 cycle, Florida Poly will be included in metric 8 and this metric will be updated to Percentage of Newly Admitted FTICs with High School GPA of a 4.0 or Higher for New College of Florida. The metric is being updated because only 64% of NCF's incoming freshman come to the university having a class high school rank. A metric focused on high school GPA will be a more appropriate way to determine student success.

Definition and Data Source

- Percent of all degree-seeking, first-time, first-year (freshman) students who had high school class rank within the top 10% of their graduating high school class.
- Source: New College of Florida and Florida Polytechnic University as reported to the Common Data Set.

Metric 9a: Three-Year Graduation Rate for FCS Associate in Arts Transfer Student



Background

- Originally, Metric 9 was designated as the Board's choice metric. From 2014-15 to 2017-18, the metric was split between 3 different metrics chosen by the Board:
 - 9a. Percent of Bachelor Degrees Without Excess Hours (FAMU, FAU, FGCU, FIU, UCF, UNF, USF, and UWF)
 - 9b. Faculty Awards (FSU and UF)
 - 9c. National Ranking for Institutional & Program Achievements (NCF)
- From 2018-19 to 2020-21, the Board decided to include all of the universities in Metric 9a. Percent of Bachelor Degrees Without Excess Hours
- The 2021 Legislature added two new metrics in the PBF statute, 2-year graduation rate for associate in arts transfer students and 6-year graduation rate for students who are awarded a Pell Grant in their first year. Instead of adding more metrics to the model, the Board decided to replace their Choice Metric to include these two new required metrics. The metrics are worth 5 points each. The 2022 legislature changed 2-year to 3-year graduation rates for AA transfer students which will be implemented in the upcoming PBF cycle.
- Section 1001.92(1) the performance-based metrics must include: (b) Beginning in fiscal year 2022-2023, the 3-year graduation rate for associate in arts transfer student;

Definition and Data Source

- This transfer cohort is defined as undergraduates entering in fall term (or summer continuing to fall) from the Florida College System with an Associate in Arts (AA) degree. The rate is the percentage of the initial cohort that has either graduated from the same institution by the summer term of their third academic year. Both full-time and part-time students are used in the calculation. Students who were flagged as enrolled in advanced graduate programs that would not earn a bachelor's degree are excluded.
- Source: State University Database System (SUDS).

Metric 9a: Three-Year Graduation Rate for FCS Associate in Arts Transfer Student



2023-24 Benchmarks:

Excellence Points	5	4	3	2	1
9a. Three-Year Graduation Rate for FCS Associate in Arts Transfer Student	70%	67%	64%	61%	58%

Improvement Points	5	4	3	2	1
% Improvement	5%	4%	3%	2%	1%

Strategic Plan Goal: 62%

Metric 9b: Six-Year Graduation Rate for Students who are Awarded a Pell Grant in their First Year



Background

- Originally, Metric 9 was designated as the Board's choice metric. From 2014-15 to 2017-18, the metric was split between 3 different metrics chosen by the Board:
 - 9a. Percent of Bachelor Degrees Without Excess Hours (FAMU, FAU, FGCU, FIU, UCF, UNF, USF, and UWF)
 - 9b. Faculty Awards (FSU and UF)
 - 9c. National Ranking for Institutional & Program Achievements (NCF)
- From 2018-19 to 2020-21, the Board decided to include all of the universities in Metric 9a. Percent of Bachelor Degrees Without Excess Hours
- The 2021 Legislature added two new metrics in the PBF statute, 2-year graduation rate for associate in arts transfer students and 6-year graduation rate for students who are awarded a Pell Grant in their first year. Instead of adding more metrics to the model, the Board decided to replace their Choice Metric to include these two new required metrics. The metrics are worth 5 points each.
- Section 1001.92(1) the performance-based metrics must include: (i) Beginning in fiscal year 2021-2022, the 6-year graduation rate for students who are awarded a Pell Grant in their first year.

Definition and Data Source

- This metric is based on the percentage of students who started in the Fall (or summer continuing to Fall) term and were enrolled full-time or part-time in their first semester and who received a Pell Grant during their first year and who graduated from the same institution by the summer term of their sixth year. Students who were flagged as enrolled in advanced graduate programs that would not earn a bachelor's degree were excluded.
- Source: State University Database System (SUDS).



Metric 9b: Six-Year Graduation Rate for Students who are Awarded a Pell Grant in their First Year

Most Recent Data:

2022-23		FAMU	FAU	FGCU	FIU	FL Poly	FSU	NCF	UCF	UF	UNF	USF	UWF
9b. Six-Year Graduation Rate for Students who are Awarded a Pell Grant in their First Year	Excellence	52.0%	55.9%	51.5%	65.0%	NA	81.3%	65.2%	70.6%	87.3%	58.3%	72.0%	45.0%
	Improvement	-1.3%	0.6%	1.4%	1.2%	NA	1.3%	4.6%	-0.7%	2.1%	1.8%	0.5%	0.0%

Score History:

Metric	FAMU	FAU	FGCU	FIU	FL Poly	FSU	NCF	UCF	UF	UNF	USF	UWF
2022-23	0	0	1	2	NA	5	4	3	5	1	3	0
2021-22	1	4	3	3	NA	5	1	3	5	0	3	5

Scores in black are based on excellence. Scores in orange are based on improvement.

Raw scores – these scores are not normalized.

2022-23 Benchmarks:

Excellence Points	5	4	3	2	1
9b. Six-Year Graduation Rate for Students who are Awarded a Pell Grant in their First Year	80%	75%	70%	65%	60%
Improvement Points	5	4	3	2	1
% Improvement	5%	4%	3%	2%	1%

No Strategic Plan Goal



Metric 9b1: Academic Progress Rate, 2nd Year Retention for FTIC with a Pell Grant

Background

- This is an alternative metric for Florida Polytechnic University. The first year FL Poly will have a 6-yearr Pell FTIC rate is 2018-24 that will be reported in 2025. FL Poly will have an alternative metric until they are able to participate in Metric 9b.

Definition and Data Source

- This metric is based on the percentage of students who started in the Fall (or summer continuing to Fall) term and were enrolled full-time in their first semester and who received a Pell Grant during their first year and were still enrolled in the same institution during the next Fall term.
- Source: State University Database System (SUDS).

Most Recent Data:

2022-23		FL Poly
9b1. Academic Progress Rate, 2nd Year Retention for FTIC with a Pell-Grant	Excellence	66.0%
	Improvement	-21.8%

Score History:

Metric	FL Poly
2022-23	0
2021-22	5

2022-23 Benchmarks:

Excellence Points	5	4	3	2	1
9b1. Academic Progress Rate, 2nd Year Retention for FTIC with a Pell-Grant	89%	88%	87%	86%	85%

Improvement Points	5	4	3	2	1
% Improvement	5%	4%	3%	2%	1%

No Strategic Plan Goal



Metric 10: University BOT Choice

Background

- University Boards of Trustees were asked to choose one unique metric for their university. Each Board of Trustees has chosen a metric from the metrics in the University Work Plans that are applicable to the mission of that university and have not been previously chosen for the model.
- From 2014-15 to 2019-20 Metric 10 remained the same for nearly all of the universities. Eventually this resulted in each university scoring 10 points every year for their choice metric.
- In 2020, the Board required the universities to review their choice metric and benchmarks. The BOTs could choose a new metric or keep their original, however the benchmarks had to be set so that every school started with a score of 7 points with the data available at the time. The direction from the Board was for the universities to strive for improvement in their choice metric, not just an easy score of 10.

Definition and Data Source

- Each university has its own unique definition with many different data sources which are provided in detail on the Board’s website.

Score History:

Metric	FAMU	FAU	FGCU	FIU	FL Poly	FSU	NCF	UCF	UF	UNF	USF	UWF
2022-23	10	10	9	7	10	7	10	9	10	10	10	9
2021-22	10	10	8	10	10	8	10	9	5	10	9	9
2020-21	5	10	10	10	NA	7	10	7	5	7	9	6

Scores in black are based on excellence. Scores in orange are based on improvement.

Raw scores – these scores are not normalized.



Metric 10: University BOT Choice

2023-24 Metric 10 Benchmarks											
Excellence Points		10	9	8	7	6	5	4	3	2	1
10.A.	FAMU - Number of Bachelor's Degrees Awarded to Transfers with AA Degrees from FCS	350	330	310	290	270	250	230	210	190	170
10.B.	FAU - Total Research Expenditures (in Millions)	\$ 75 M	\$72 M	\$69 M	\$66 M	\$63 M	\$60 M	\$57 M	\$54 M	\$51 M	\$48 M
10.C.	FGCU - Number of Bachelor's Degrees Awarded to Hispanic & African-Americans	820	780	740	700	660	620	580	540	520	500
10.D.	FIU - Number of Post-Doctoral Appointees	271	259	247	235	223	211	199	187	175	163
10.E.	FL Poly - Percent of Bachelor Degree Graduates with 2+ Workforce Experiences	76%	75%	74%	73%	72%	71%	70%	69%	68%	67%
10.F.	FSU - Number of Bachelor's Graduates who took an Entrepreneurship Class	1,360	1,275	1,190	1,105	1,020	935	850	765	680	595
10.G.	NCF - Percent of FTIC Graduates Completing 3+ High-Impact Practices	67%	63%	59%	55%	51%	47%	43%	39%	35%	31%
10.H.	UCF - Percent of Bachelor's Degrees Awarded to African-American and Hispanic Students	40%	39%	38%	37%	36%	35%	34%	33%	32%	31%
10.I.	UF - Endowment Size (\$M)	2,600	2,350	2,100	1,850	1,600	1,350	1,100	850	600	350
10.J.	UNF - Percent of Undergraduate FTE in Online Courses	27%	26%	25%	24%	23%	22%	21%	20%	19%	18%
10.K.	USF - 6-Year Graduation Rates	74%	73%	72%	71%	70%	69%	68%	67%	66%	65%
10.L.	UWF - Percent of Baccalaureate Graduates Completing 2+ Types of High-Impact Practices	51%	47%	43%	39%	35%	31%	27%	23%	19%	15%
Improvement Points		10	9	8	7	6	5	4	3	2	1
% Improvement		5.0%	4.5%	4.0%	3.5%	3.0%	2.5%	2.0%	1.5%	1.0%	0.5%



www.flbog.edu



- Additional supporting materials follow this slide.

Performance Funding – A Look Back



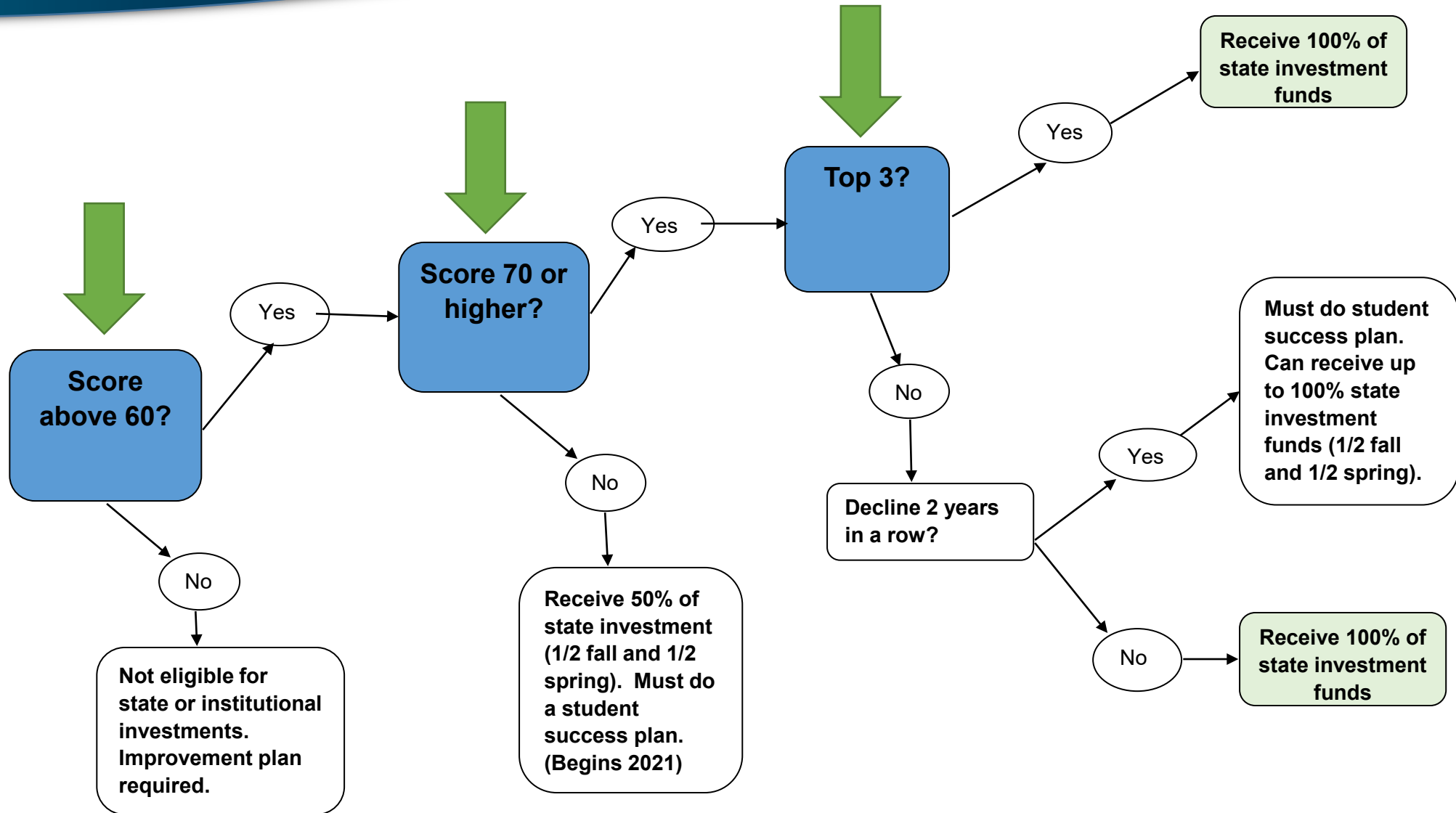
- 2012 – Chair Colson charged the Budget & Finance Committee with creating a performance-based funding model
- January 2014 – Board approved a model
- 2016, Section 1001.92, F.S. created in House Bill 7029 (Ch. 2016-237, L.O.F.). Board Regulation 5.001 created
- FY 2022-23: \$560 M Total PBF Appropriation (\$265 M State Investment, \$295 M Institutional Investment)

Performance Funding Appropriations



	State Investment	Institutional Investment	Total
2014-2015	\$100 M	\$65 M	\$165 M
2015-2016	\$150 M	\$250 M	\$400 M
2016-2017	\$225 M	\$275 M	\$500 M
2017-2018	\$245 M	\$275 M	\$520 M
2018-2019	\$265 M	\$295 M	\$560 M
2019-2020	\$265 M	\$295 M	\$560 M
2020-2021	\$265 M	\$295 M	\$560 M
2021-2022	\$265 M	\$295 M	\$560 M
2022-2023	\$265 M	\$295 M	\$560 M

Performance Funding Score Methodology Overview





www.flbog.edu