



# **Linking Industry to Nursing Education (LINE) Recommendations**

**Ms. Emily Sikes**

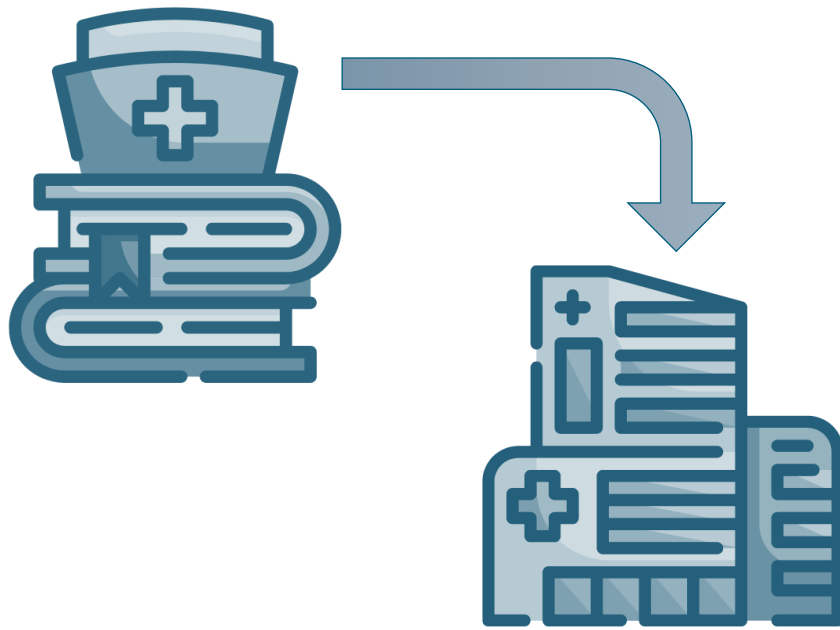
**Assistant Vice Chancellor for Strategic Initiatives & Economic Development**

**November 9, 2022**

**[www.flbog.edu](http://www.flbog.edu)**

## Section 1009.8962, Florida Statutes

### Linking Industry to Nursing Education (**LINE**) Fund



- Incentivize collaboration between nursing education programs & healthcare partners
- The Board of Governors is charged with evaluating & approving program proposals
- Legislature provided a maximum of \$6 million in LINE Funds
- Provides a **dollar-for-dollar match** for contributions from healthcare partners

# Allowable Uses of LINE Funds

Section 1009.8962, Florida Statutes



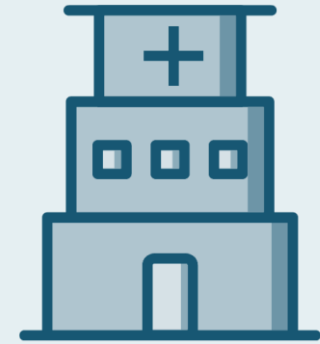
**Student  
Scholarships**



**Faculty  
Recruitment**



**Equipment**



**Simulation  
Centers**



Funds may **not** be used for the construction of new buildings

# Approved Proposals – Round 1



	Institution	Healthcare Partner	Amount Requested
1	<b>FAU</b>	Baptist Health	\$750,000
2	<b>FAU</b>	Memorial Healthcare System	\$366,000
3	<b>FGCU</b>	Lee Health System	\$500,000
4	<b>FIU</b>	Baptist Health South Florida	\$750,000
5	<b>FIU</b>	Memorial Healthcare System	\$200,000
6	<b>FIU</b>	Memorial Healthcare System	\$123,600
7	<b>FIU</b>	HCA Healthcare/HCA East Florida	\$1,500,000
8	<b>FSU</b>	Tallahassee Memorial Healthcare & HCA Florida Capital Hospital	\$744,000
9	<b>USF</b>	Johns Hopkins All Children's Hospital	\$391,856
10	<b>USF</b>	Moffitt Cancer Center	\$82,000
11	<b>UWF</b>	Baptist Health Care	\$192,500
<b>Total</b>			<b>\$5,599,956</b>

# New Proposals – Round 2 Funding Recommendations



	Institution	Healthcare Partner	Amount Requested	Amount to Fund	% Funded
1	<b>USF</b>	HCA Healthcare West Florida Division	\$155,000.00	\$29,182.42	19%
2	<b>FIU</b>	Public Health Trust of Miami-Dade County & Jackson Health System	\$400,000.00	\$75,309.49	19%
3	<b>FAU</b>	HCA Healthcare East Division	\$200,000.00	\$37,654.74	19%
4	<b>UNF</b>	HCA Healthcare South Atlantic Division	\$50,000.00	\$9,413.69	19%
5	<b>UCF</b>	Orlando Health	\$100,000.00	\$18,827.37	19%
6	<b>UCF</b>	AdventHealth Orlando	\$100,000.00	\$18,827.37	19%
7	<b>UCF</b>	Nemours Children's Hospital	\$182,000.00	\$34,265.82	19%
8	<b>FSU</b>	HCA Florida Capital Hospital	\$400,000.00	\$75,309.49	19%
9	<b>UWF</b>	Santa Rosa Medical Center	\$37,800.00	\$7,116.75	19%
10	<b>FGCU</b>	Lee Health System	\$400,000.00	\$75,309.49	19%
11	<b>USF</b>	Johns Hopkins All Children's Hospital	\$100,000.00	\$18,827.37	19%
<b>Total</b>			<b>\$2,124,800.00</b>	<b>\$400,044.00</b>	

# Uses of Funds Summary



**Student Scholarships**



**Faculty Salary**



**Simulation Resources**



**Faculty Professional Development**



**NCLEX Preparation**

	Student Scholarships	Faculty Salary	Simulation Resources	Faculty Professional Development	NCLEX Preparation
FAU	✓		✓	✓	✓
FGCU	✓	✓	✓		
FIU	✓				
FSU	✓	✓	✓	✓	
UCF	✓	✓			
UNF	✓	✓	✓		
USF	✓				
UWF	✓	✓			



[www.flbog.edu](http://www.flbog.edu)