



Ph.D. in Materials Science & Engineering
Florida Agricultural & Mechanical University

Dr. Christy England

Vice Chancellor for Academic & Student Affairs

November 9, 2022

www.flbog.edu

Program Information



PURPOSE

Train materials science engineers to solve complex problems related to emerging technologies & become leaders in the field



COMPARED TO OTHER SUS PROGRAMS

Offered jointly with Florida State University as the second program in CIP 40.1001 in the System



FAMU-FSU
College of Engineering

Enrollment & Workforce Demand



PROJECTED ENROLLMENT

YEAR 1

2

2-3 students per year initially
4 students per year by year 4

YEAR 5

5

PROJECTED INCREASE IN WORKFORCE DEMAND



2021-2029¹
Growth
Openings

Postsecondary
Engineering Teachers

18%
263

Architectural &
Engineering Managers

15%
1,150

Materials Engineers

12%
72



2020-2030
Growth
Openings

13%
5,800

4%
8,100

8%
2,100

¹ Workforce data for postsecondary engineering teachers in Florida include years 2020-2028.

BUDGET



- Year 1 total program costs **\$90,232**
- Funded through **E&G**

CURRENT APPROVED TUITION RATES



- Non-Resident **\$1,022.04** per credit hour
- Resident **\$405.67** per credit hour



Ph.D. in Engineering Education
University of Florida

Dr. Christy England

Vice Chancellor for Academic & Student Affairs
November 9, 2022

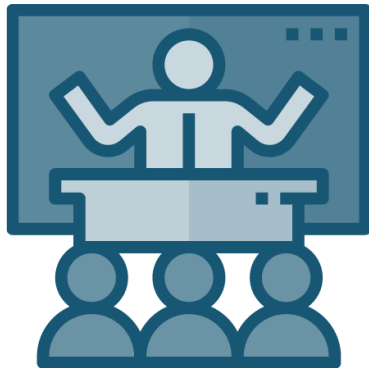
www.flbog.edu

Program Information



PURPOSE

Prepare graduates to conduct research & develop evidence-based practices to improve engineering instruction



COMPARED TO OTHER SUS PROGRAMS

2 other doctoral programs in CIP 14.9999 in the System



Ph.D. in Transportation & Environmental Engineering



Ph.D. in Engineering & Computing Education

Enrollment & Workforce Demand



PROJECTED ENROLLMENT

YEAR 1



10

10 students per year initially
5 students per year by year 4

YEAR 5

40

PROJECTED INCREASE IN WORKFORCE DEMAND

		Postsecondary Engineering Teachers	Training & Development Managers & Specialists
	2021-2029 ¹ Growth	18%	16%
	Openings	263	3,595
	2020-2030 Growth	13%	11%
	Openings	5,800	40,000

¹ Workforce data for postsecondary engineering teachers in Florida include years 2020-2028.

BUDGET



- Year 1 total program costs **\$191,703**
- Funded through **E&G**

CURRENT APPROVED TUITION RATES



- Non-Resident **\$690.21** per credit hour
- Resident **\$448.73** per credit hour



Ph.D. in Nursing
Florida State University

Dr. Christy England

Vice Chancellor for Academic & Student Affairs
November 9, 2022

www.flbog.edu

Program Information



PURPOSE

Train students to teach in nursing programs & contribute scholarship to the field



COMPARED TO OTHER SUS PROGRAMS

5 other doctoral program in the System in CIP 51.3808



Enrollment & Workforce Demand



PROJECTED ENROLLMENT

YEAR 1

6

6 students per year initially
8 students per year by year 3

YEAR 5

10

PROJECTED INCREASE IN WORKFORCE DEMAND

Nursing Educators



2021-2029
Growth **23%**
Openings **812**



2020-2030
Growth **22%**
Openings **16,300**

BUDGET



- Year 1 total program costs **\$325,234**
- Funded through **E&G**

CURRENT APPROVED TUITION RATES



- Non-Resident **\$1,075.66** per credit hour
- Resident **\$444.26** per credit hour



www.flbog.edu