



Linking Industry to Nursing Education (LINE) Recommendations

Ms. Emily Sikes

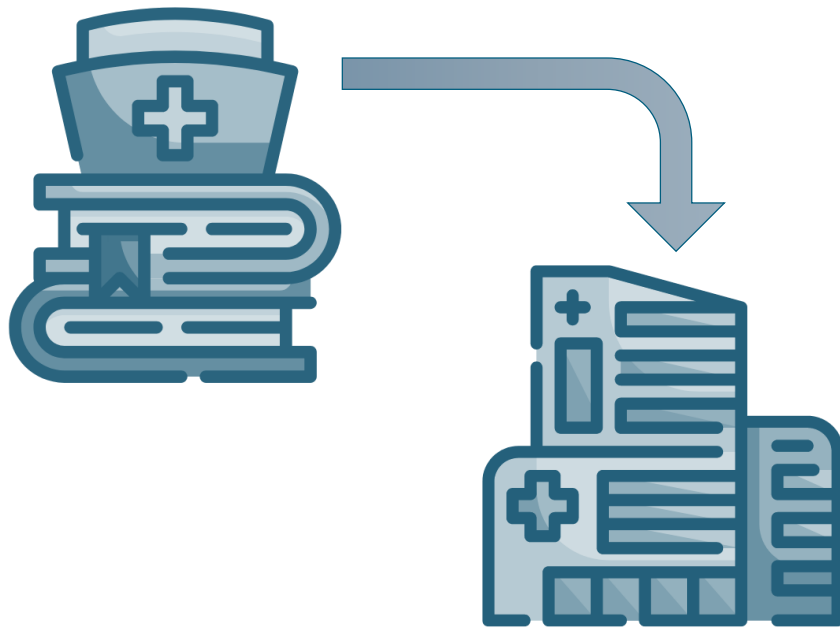
Assistant Vice Chancellor for Strategic Initiatives & Economic Development

September 13, 2022

www.flbog.edu

Section 1009.8962, Florida Statutes

Linking Industry to Nursing Education (**LINE**) Fund



- Incentivize collaboration between nursing education programs & healthcare partners
- The Board of Governors is charged with evaluating & approving program proposals
- Legislature provided a maximum of \$6 million in LINE Funds
- Provides a **dollar-for-dollar match** for contributions from healthcare partners

Allowable Uses of LINE Funds

Section 1009.8962, Florida Statutes



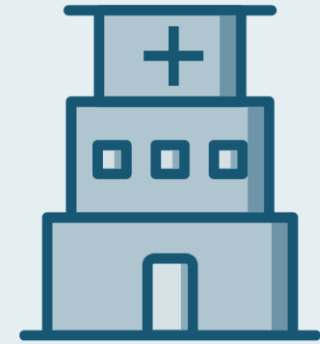
**Student
Scholarships**



**Faculty
Recruitment**



Equipment



**Simulation
Centers**



Funds may **not** be used for the construction of new buildings






Proposal Summary



	Institution	Healthcare Partner	Amount Requested
1	FAU	Baptist Health	\$750,000
2	FAU	Memorial Healthcare System	\$366,000
3	FGCU	Lee Health System	\$500,000
4	FIU	Baptist Health South Florida	\$750,000
5	FIU	Memorial Healthcare System	\$200,000
6	FIU	Memorial Healthcare System	\$123,600
7	FIU	HCA Healthcare/HCA East Florida	\$1,500,000
8	FSU	Tallahassee Memorial Healthcare & HCA Florida Capital Hospital	\$744,000
9	USF	Johns Hopkins All Children's Hospital	\$391,856
10	USF	Moffitt Cancer Center	\$82,000
11	UWF	Baptist Health Care	\$192,500
Total			\$5,599,956

Uses of Funds Summary



	 Student Scholarships	 Faculty Salary	 Simulation Equipment	 Faculty Professional Development	 Clinical Preceptors
FGCU	✓	✓	✓	✓	
FSU	✓	✓	✓	✓	
FIU	✓	✓			✓ **
UWF	✓	✓			✓
FAU	✓	✓			
USF			✓ *		

*USF also plans to spend funds on simulation equipment space & support staff.

** Clinical preceptors are experienced practitioners that provide clinical supervision. FIU plans to spend funds to recruit & prepare clinical preceptors to teach.



www.flbog.edu