

Institutional Approach



Transparency



Accountability



Internal Controls



Excellence





ATHLETICS

| Football Program

| Student-athlete Eligibility

| Certification Processes

| NCAA Waivers

| Recruiting & Advising

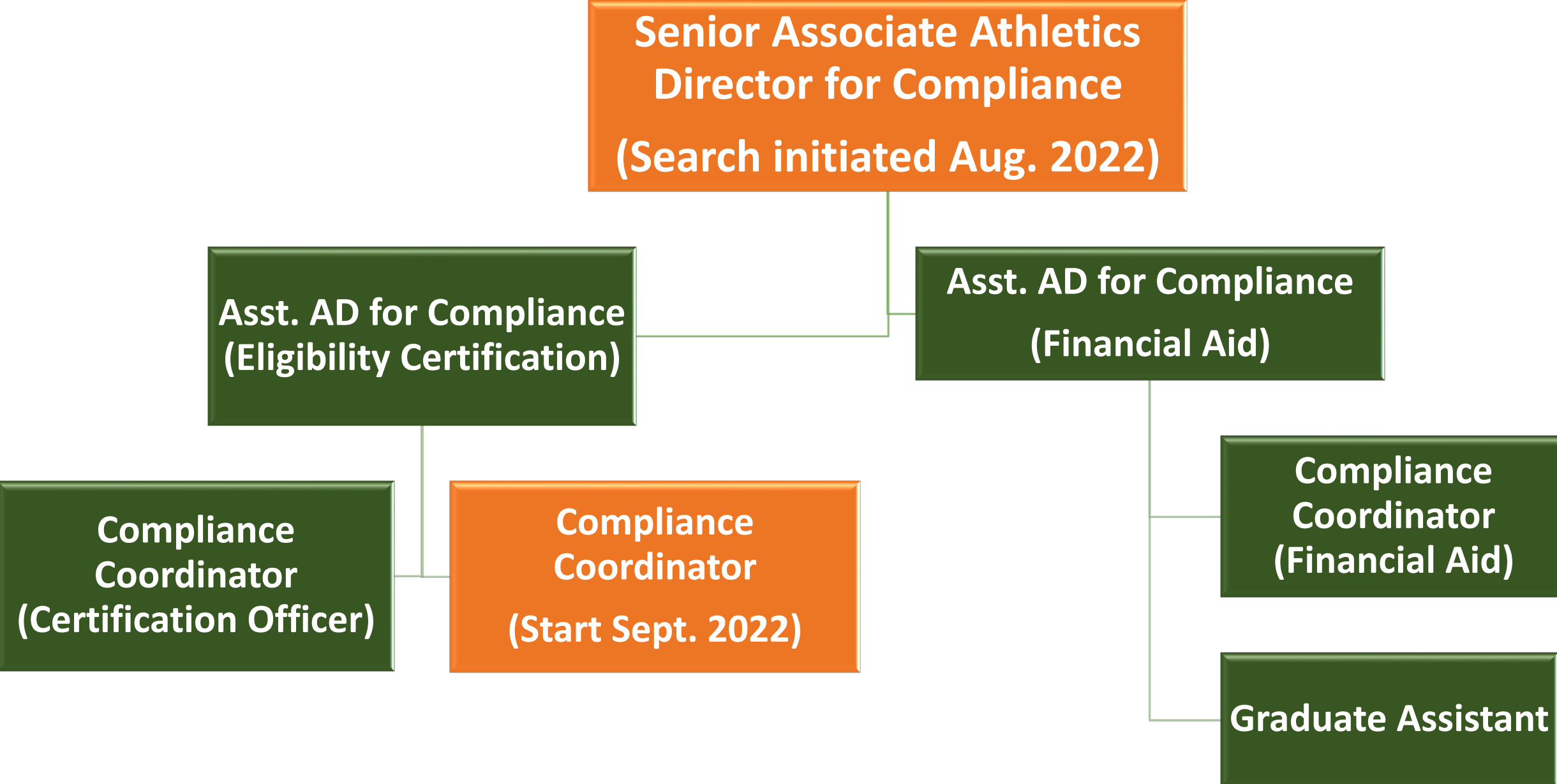
| Academic Support



Compliance: What We've Done

- | August 2022- 13 NCAA-approved waivers in football and volleyball; 4 reconsiderations; 1 appeal; 7 are in progress
- | Supplemented compliance support with internal personnel and external firm Bond, Schoeneck, and King
- | Increase staffing in the athletics compliance unit
- | Mandated use of ARMS software platform

Athletics Compliance – Adopted July 2022



Pathway to Athletics Excellence



Accomplished Tasks



In-Progress Efforts



Planned Actions to Achieve Athletics Excellence

Accomplished	In-Progress	Planned
<ul style="list-style-type: none"> ➤ January 2022 - Submitted NCAA Football APR Improvement Plan ➤ April 2022 - Benchmarked and conceived a revised compliance structure ➤ July 2022 - Adopted the improved athletics compliance structure ➤ August 2022 - Re-established the Athletics Support Committee 	<ul style="list-style-type: none"> ➤ Assessing athletics ➤ Preparing corrective action plans ➤ Recruiting and hiring additional athletics compliance and academic support staff including advisors and tutors ➤ Permanent AD search ➤ Division of Audit monitoring and review 	<ul style="list-style-type: none"> ➤ Enhance Athletics Internal Controls ➤ Institutional Effectiveness: metrics, scorecard, performance monitoring, and accountability measures ➤ Training ➤ Enhanced communications with all stakeholders



HOUSING

Palmetto Phase III

| Inspections

| Treatment

| Communication

| Security

| Lodging

| Transportation



| Built 1996/1997

| Single & Double Rooms

| Electronic Access

| Security Cameras

| 24/7 Front Desk Staff

| Convenient Location



HOUSING

Polkinghorne Village

- | Fire Hazard/ Sprinklers
- | Water Damage
- | Relocation & Response
- | Lodging
- | Transportation
- | Student Services

Pathway to Housing Excellence



**Accomplished
Tasks**



**In-Progress
Efforts**



**Planned Actions to
Achieve Housing
Excellence**

Accomplished	In-Progress	Planned
<ul style="list-style-type: none"> ➤ Fire extinguished ➤ Pests treated ➤ Students temporarily relocated to local lodging ➤ Student services provided – security, transportation, and meal plans ➤ Students returned to on-campus housing 	<ul style="list-style-type: none"> ➤ Responding to any additional reports of pests ➤ Responding to any property loss claims ➤ Monitoring, routine inspections, and pest services/maintenance as needed 	<ul style="list-style-type: none"> ➤ Plan ahead to avoid cross-scheduling conflicts ➤ Ensure adequate time for inspections, maintenance, pest services, and cleaning of residence halls ➤ Continue communications to students to ensure concerns are heard and timely addressed ➤ Pursue funding for needed deferred maintenance and new housing stock