



FLORIDA STATE UNIVERSITY  
DIVISION OF STUDENT AFFAIRS

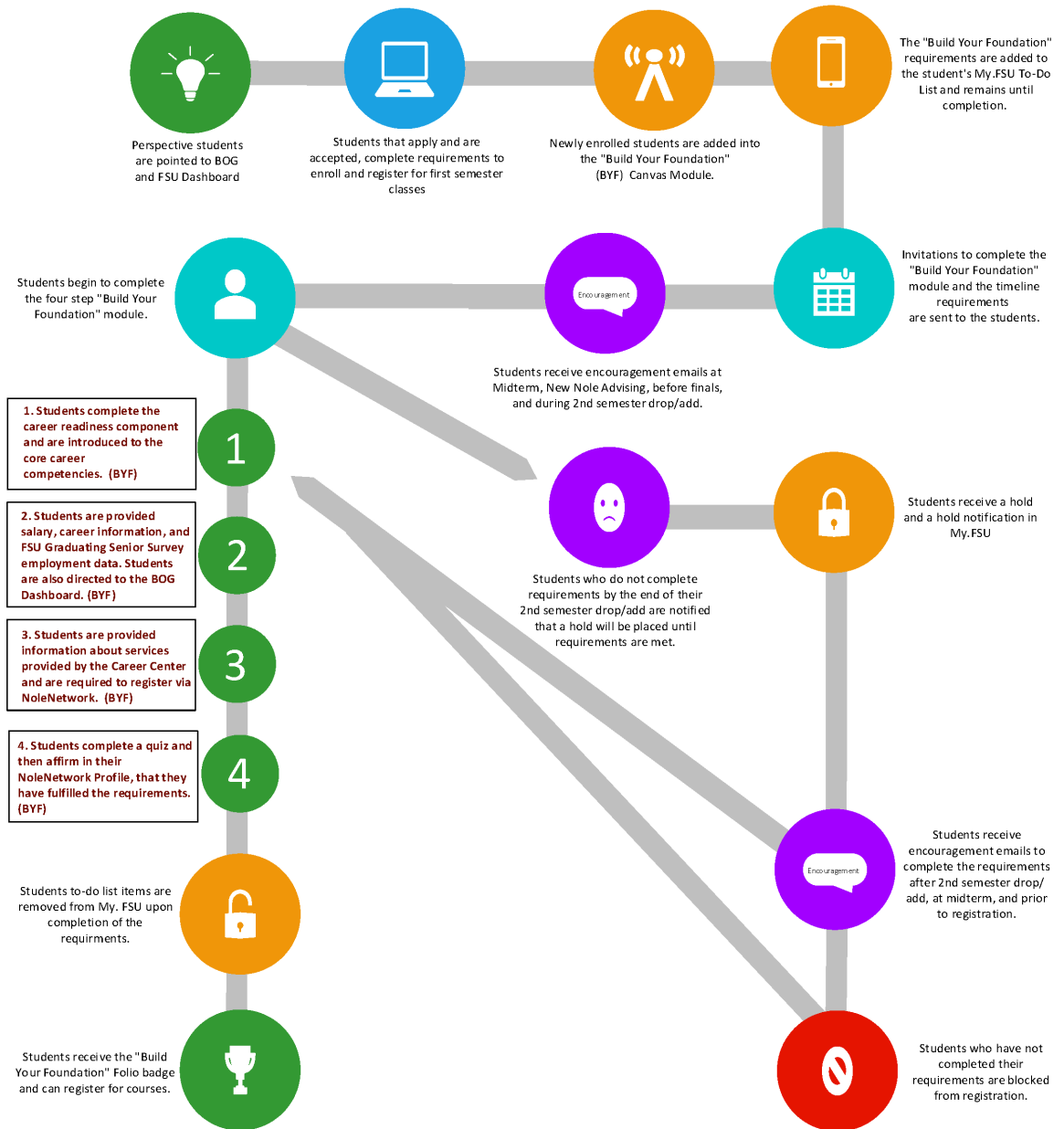
THE CAREER CENTER

# Build Your Foundation

Exceeding the Requirements of House Bill 1261



# Student Journey



Meeting  
Students  
Where  
They Are

Build Your Foundation

Organizations

Home





Modules

Grades

Recent Announcements

WELCOME


**BUILD YOUR FOUNDATION**


   

FLORIDA STATE UNIVERSITY  
DIVISION OF STUDENT AFFAIRS

THE CAREER CENTER

#DesignYourCareer

 [Start Here](#)

 [Get Help](#)

# Exceeding Expectations

## BOG/State Requirements

▼ Build your Foundation			Complete All Items	✓	+	⋮
⋮	All pages must view and all activities must be completed to fulfill the university requirements for Build Your Foundation.					✓ ⋮
⋮	FOUNDATION BUILDING MATERIALS					✓ ⋮
⋮	📄 1: Welcome to FSU	View		✓		⋮
⋮	📄 2: Foundation Building Blocks: What's Involved in a Career Choice?	View		✓		⋮
⋮	📄 3: Discover your Values, Interests & Skills	View		✓		⋮
⋮	📄 4: Major & Career Connection	View		✓		⋮
⋮	📄 5: Salary and Career Connection	View		✓		⋮
⋮	📄 6: Begin Building Career Ready Competencies			✓		⋮
⋮	📄 7: Design Your Career with the FSU Career Center	View		✓		⋮
⋮	FOUNDATION BUILDING ACTIVITIES					✓ ⋮
⋮	📄 Discover your Foundation	Mark done		✓		⋮
⋮	📄 Build your NoleNetwork	Mark done		✓		⋮
⋮	🎯 Quiz: Build Your Foundation	9 pts   Score at least 9.0		✓		⋮

# Building on the Foundation

## 6 Begin Building Career Ready Competencies

### ★ ProfessoNole Competencies

Skill development is a critical ingredient of becoming "career ready". Do you know which skills are most important to employers? You will learn how to build, demonstrate, and display your professional skills throughout this course.



### 📺 Career Ready Video

Watch the videos below to learn more



### 🏆 Earn Your ProfessoNole Ready Badges

The Career Center is excited for you to join our online badging program that will help you learn more about the professional skills that are valued by employers. There is engaging information to explore and career activities that will help you learn about being career-ready.

At the completion of ProfessoNole Ready, you will be able to:

1. Connect personal values, interests, and skills to career options.
2. Effectively engage with Career Center resources, services, and programs.
3. Learn about positive post-graduation outcomes including employment and continuing education.
4. Identify the skills and career readiness competencies that are most important to employers

Awarded badges automatically connect to your Folio profile and Canvas 'Badges' section.



We hope that this online professional development program will also help you connect with Career Center and FSU student services and staff!

### 📄 Earn Additional Badges through ProfessoNole Pathways and Badges

The [ProfessoNole Pathways and Badges](#) program here at FSU will help you to:

- connect you to additional skill development badges
- acquire new skills and competencies
- display and demonstrate the skills you have to potential employers
- provide proof of your accomplishments and demonstrate your ProfessoNole Competencies

## 👤 FSU Graduates' Salary & Hiring Information

The Career Center, in conjunction with the Office of Institutional Research, has administered a survey to graduating seniors since 2003, asking students about their post-college plans and overall FSU experience.

- Browse the internship salary reports, employment destination by college and major, and graduating senior survey results here <https://www.career.fsu.edu/stats> .

## 👤 Financial Success Resources & Badges

**FSU Financial Success:** In addition to evaluating salary information related to your occupational options, FSU is dedicated to providing you with information and opportunities to engage in planning for your financial future. Connect with campus resources, information, and events by visiting <https://financialsuccess.fsu.edu/> .

**Live Well Financially:** a financial literacy education course that helps prepare students for university life and beyond, and covers a wide range of topics such as student loan debt, credit card usage, and other financial wellness topics. The Center for Health Advocacy & Wellness (CHAW) at University Health Services encourages students to make healthy lifestyle decisions that facilitate academic success and lead to life-long health and wellness.

- Click [HERE](#) to start earning your Live Well Financially badge.



**Get Fiscally Fit:** engage in three (3) Financial Wellness workshops/webinars that cover these topics:

- Budgeting and Saving
- Investing for Your Future
- Identity Theft Protections
- Paying for College
- Managing Debt
- Financial Health for College and Beyond
- And More...

**Get Fiscally Fit!**

Start earning your Fiscally Fit Badge [HERE!](#)

All webinars can be found in [NoleNetwork](#) under Events, and Workshops.

# Badge Upon Completion



## Register with the Career Center's NoleNetwork System

NOTE: it is a university requirement to activate your NoleNetwork account. NoleNetwork is the Career Center's system for linking students and alumni directly with hiring employers, internships, and other experiential learning opportunities.

Follow the instructions below to complete this university requirement.

1. Visit [www.career.fsu.edu/nolenetwork](http://www.career.fsu.edu/nolenetwork)

- Click on the "Student/Alumni Login"
- Fill out all of the required fields in the "My Account" tab:
  - Personal
  - Academic
  - Privacy
  - Emails & Notifications

2. Start building your Public Profile and explore jobs/internships, events, employers, and more! Watch the video below to learn more about building your public profile.



# Questions and Answers

---





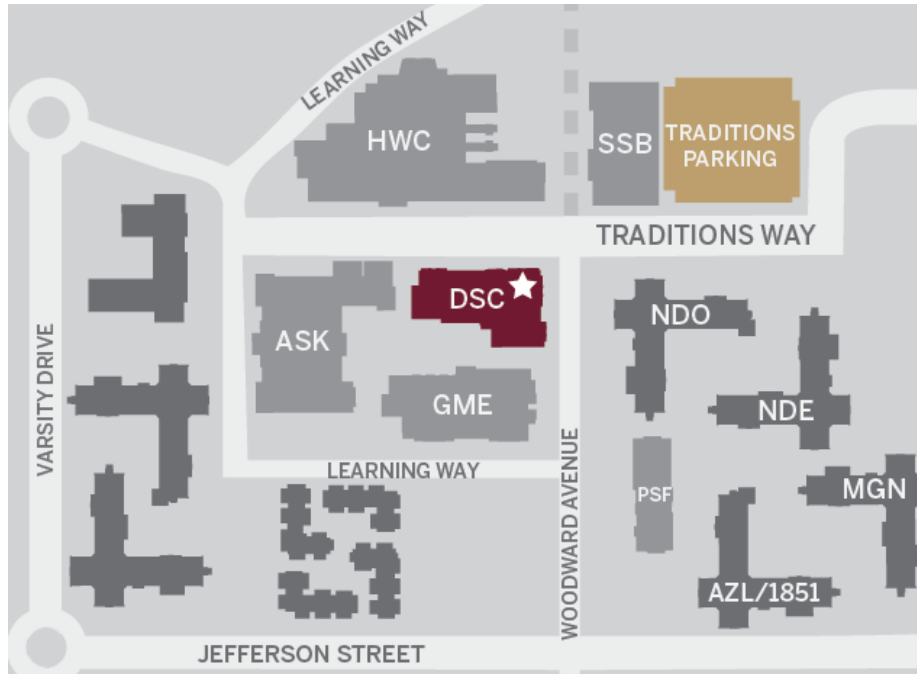


FLORIDA STATE UNIVERSITY  
DIVISION OF STUDENT AFFAIRS

THE CAREER CENTER

# The Career Center

Located in the Dunlap Success Center (DSC) across from Dorman and Deviney Halls, next to the Health and Wellness Center.



100 South Woodward Avenue, Tallahassee, FL 32306

[career.fsu.edu](http://career.fsu.edu) • 850-644-6431 • @fsucareercenter