



# **Undergraduate Career Planning Requirements**

**Ms. Emily Sikes, Assistant Vice Chancellor for Strategic Initiatives &  
Economic Development, Board of Governors**

**Ms. Myrna Hoover, Career Center Director, Florida State University**

**January 25, 2022**

**[www.flbog.edu](http://www.flbog.edu)**

## Section 1006.751, Florida Statutes

requires each state university board of trustees to adopt procedures to connect undergraduate students to career planning





## Section 1006.751, Florida Statutes requires that students



- ✓ Register with the university's career center
- ✓ Complete a career readiness training module
- ✓ Be directed to MyFloridaFuture
- ✓ Affirm awareness of their major's employment & wage prospects
- ✓ Affirm they have been provided with the required procedures

# Career Readiness Training Module



Major Exploration

Career Exploration

Competencies & Skills

Experience



# Outcomes



Personal characteristics, majors, & career paths



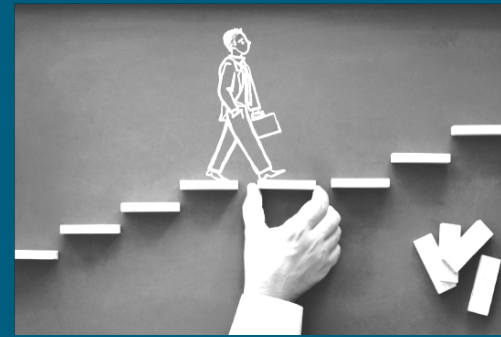
Resources



Decision making



Career plan





**All institutions have developed & are implementing career planning procedures**



## Benefits to students

- Assess personal values, interests, & skills & how these relate to academic majors & careers
- Understand the academic & the career readiness skills requirements
- Increase awareness of employment opportunities & wage prospects for each major
- Connect with resources including the career center, academic departments, state resources



## Florida State University Build Your Foundation



# Meeting Students Where They Are



## Build Your Foundation Student Journey



Perspective students are pointed to BOG and FSU Dashboard



Students that apply and are accepted, complete requirements to enroll and register for first semester classes



Newly enrolled students are added into the "Build Your Foundation" (BYF) Canvas Module.



The "Build Your Foundation" requirements are added to the student's My.FSU To-Do List and remains until completion.



Students begin to complete the four step "Build Your Foundation" module.



Encouragement

Students receive encouragement emails at Midterm, New Nole Advising, before finals, and during 2nd semester drop/add.



Invitations to complete the "Build Your Foundation" module and the timeline requirements are sent to the students.





# Providing Workforce & Occupational Data

## BOG / State Requirements

- 1. Students complete the career readiness component and are introduced to the core career competencies. (BYF)
- 2. Students are provided salary, career information, and FSU Graduating Senior Survey employment data. Students are also directed to the BOG Dashboard. (BYF)
- 3. Students are provided information about services provided by the Career Center and are required to register via NoleNetwork. (BYF)
- 4. Students complete a quiz and then affirm in their NoleNetwork Profile, that they have fulfilled the requirements. (BYF)



Students to-do list items are removed from My.FSU upon completion of the requirements.



Students receive the "Build Your Foundation" Folio badge and can register for courses.



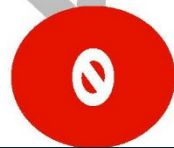
Students who do not complete requirements by the end of their 2nd semester drop/add are notified that a hold will be placed until requirements are met.



Students receive a hold and a hold notification in My.FSU



Students receive encouragement emails to complete the requirements after 2nd semester drop/add, at midterm, and prior to registration.

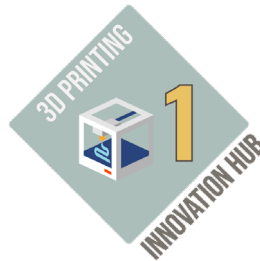


Students who have not completed their requirements are blocked from registration.

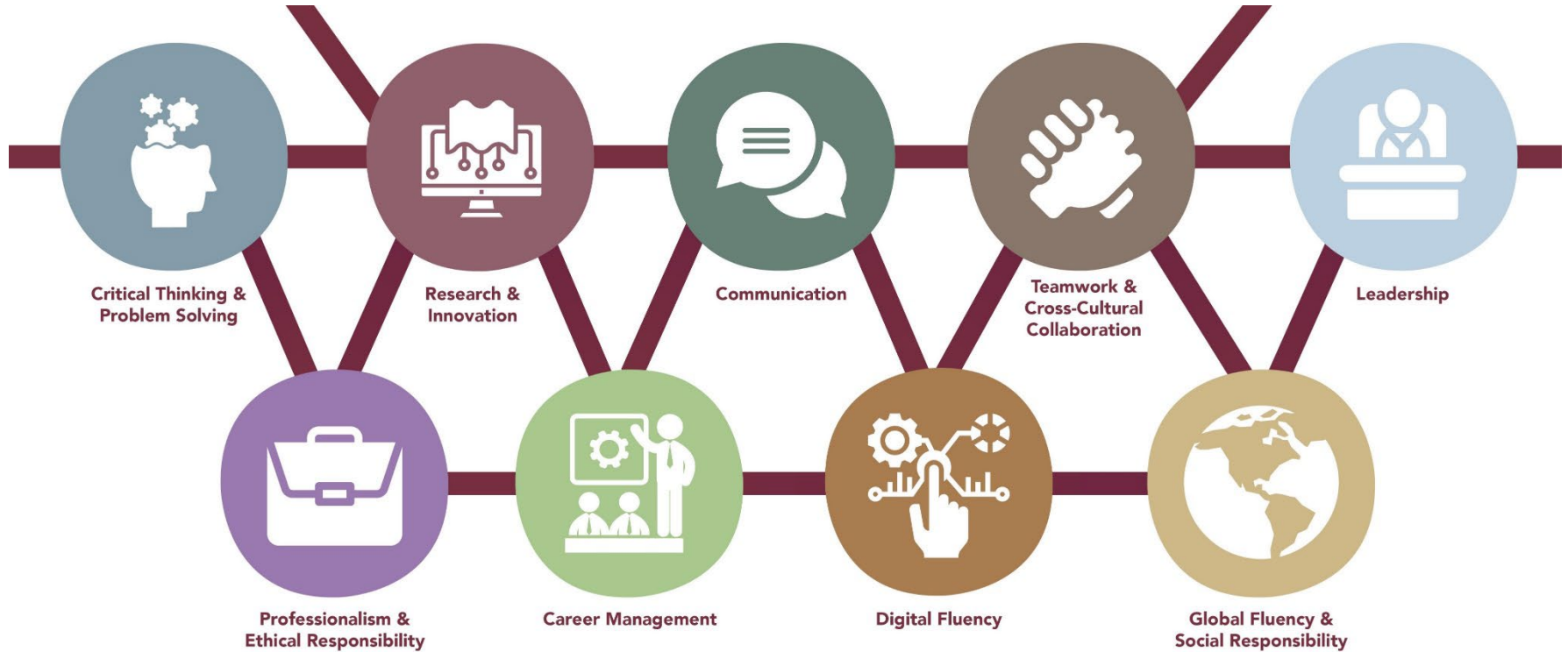
# Exceeding Expectations



## ProfessionNole Ready



# Building Student Competencies





[www.flbog.edu](http://www.flbog.edu)