



World Class Faculty & Scholar Program Report

Ms. Emily Sikes

Assistant Vice Chancellor for Strategic Initiatives & Economic Development

**January 25, 2022
www.flbog.edu**



WORLD CLASS FACULTY & SCHOLAR PROGRAM

PURPOSE

Support the efforts of state universities to recruit & retain **exemplary faculty & research scholars**

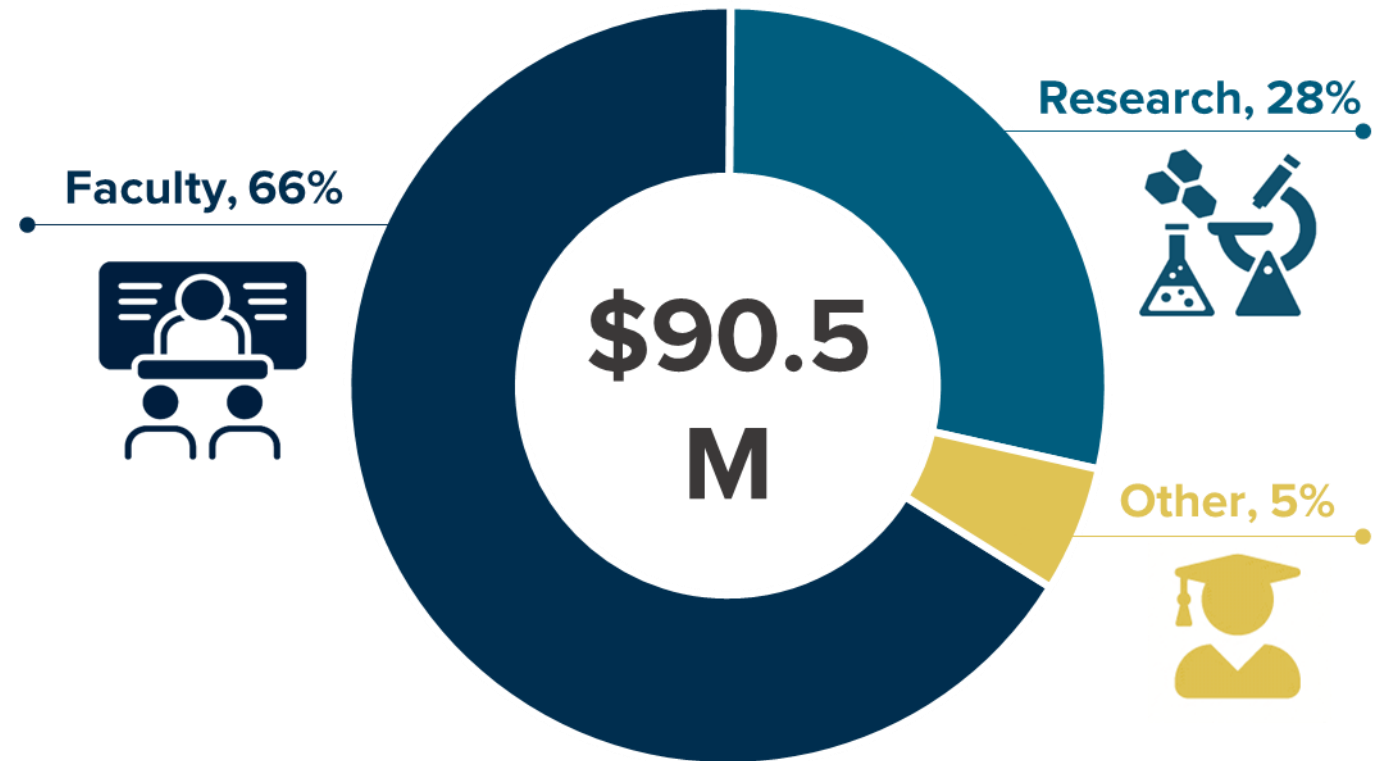
PROGRAM GOALS

Elevate the **national competitiveness** of Florida's state universities through faculty & scholar **recruitment & retention**

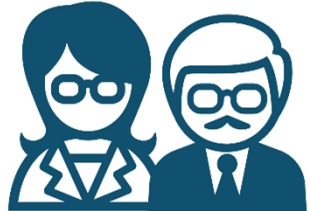
Program 2020-21 Expenditures



Almost all of World Class Faculty & Scholar Program funds **supported** faculty & research



Program benefits



- recruiting **106 new faculty** (FTE)
- retaining over **3,000 existing faculty** (FTE)



- improving the % of undergraduate **classes with fewer than 50** students to **87%**



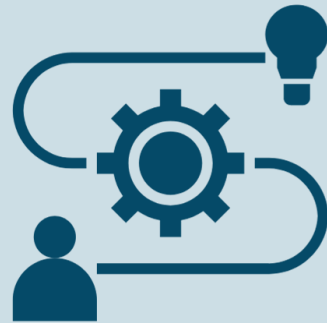
- transferring **≈ \$27.1 M** in research funding
- Over **\$384 M** in research proposals under development

Institutions reported **positive returns on investment to the state** as a result of this program

Additional research dollars



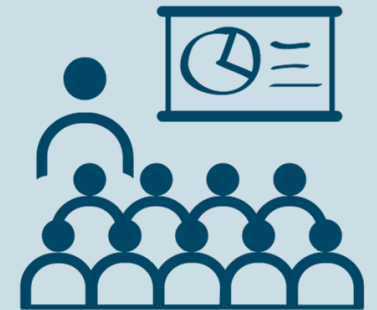
Innovation leading to economic development



Student research opportunities & workforce preparation



Improved faculty-to-student ratios



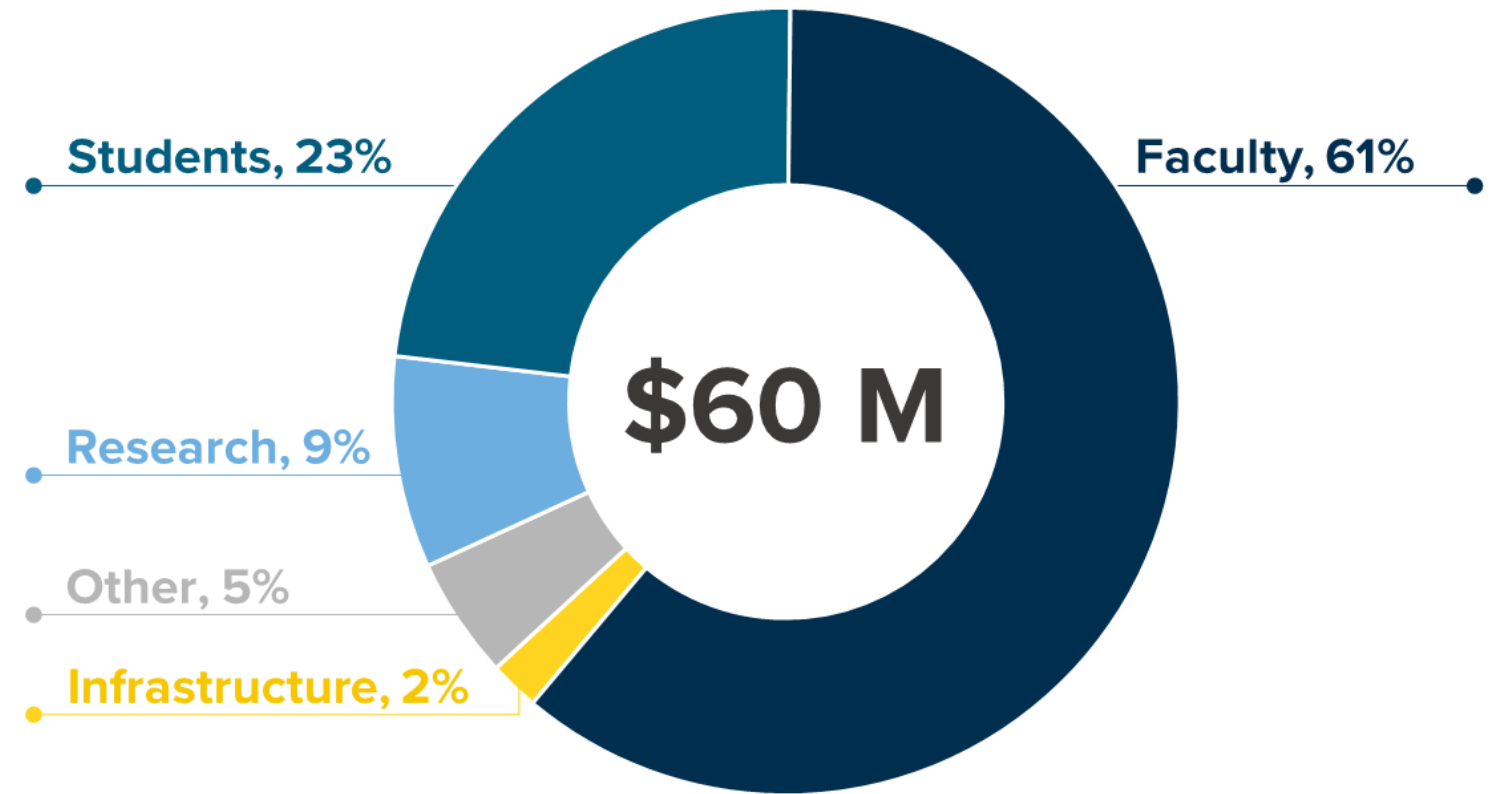


PROFESSIONAL & GRADUATE DEGREE EXCELLENCE PROGRAM REPORT

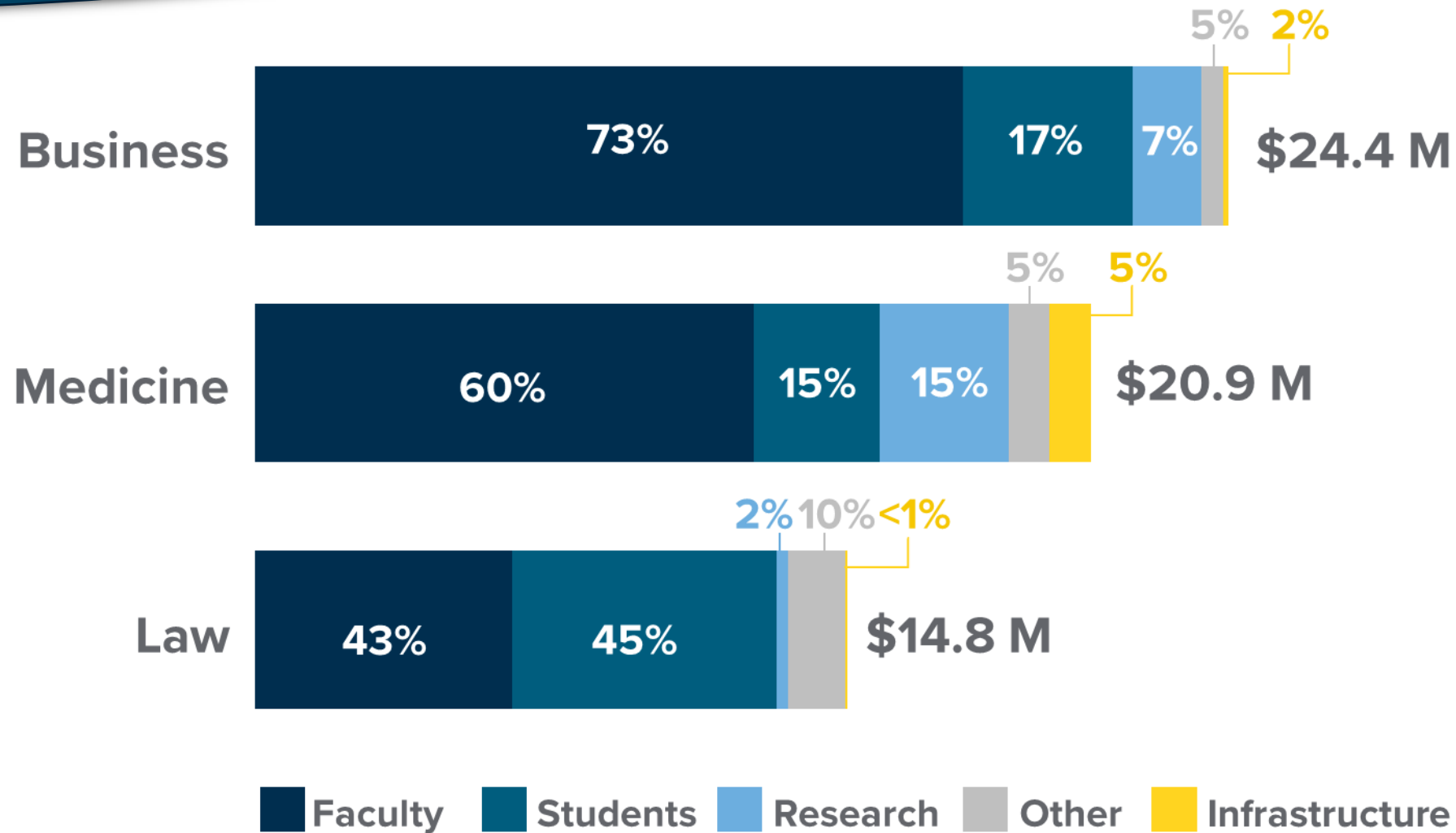
Professional Graduate Degree Excellence Program 2020-21 Expenditures



Most (84%) of the funds were used to **recruit & retain faculty & support student success initiatives**



Program 2020-21 Expenditures by Area



Note: Percentages may not total to 100% due to rounding.

Program benefits



- spending to **enhance & support** medical, law, & business programs



- **increasing** the number of graduate-level completers in medicine & business



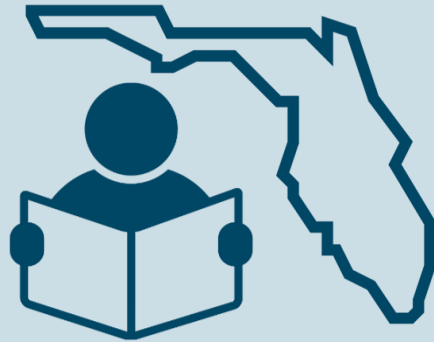
- **advancing** in the national rankings
 - UF, FSU & FIU law schools
 - UF medical & business schools
 - 5 schools in the Top 100

Institutions reported **positive economic impacts** as a result of enhancing their graduate programs

Capacity to produce more graduates



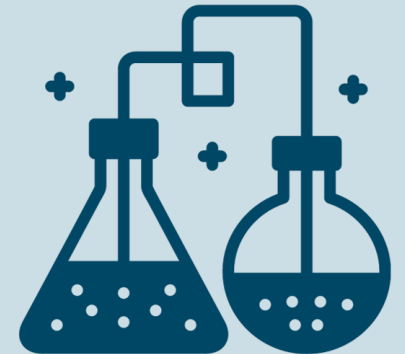
Attracting talent to Florida



Reducing cost to students



Scientific research & discoveries





www.flbog.edu