



# **2021 Accountability Plans**

**Governor Tim Cerio**  
**Chair, Strategic Planning Committee**  
**June 22, 2021**

**[www.flbog.edu](http://www.flbog.edu)**

# Highlights



**More graduates employed & higher median wages**

↑ System increase on PBF 1 & 2



**Lower costs** to students, a **25% reduction** in 2019-20  
Overall System lower cost on PBF 4



**More degrees** awarded in **Programs of Strategic Emphasis**

↑ System increase on PBF 6



**3.7% increase** in **4-year grad rates** in last year

↑ System increase on PBF 4

# Summary of PBF Current Year Goals Met



	1 Employed/ Enrolled	2 Median Wages	3 Cost to Student	4 4-yr Grad Rate	5 Progress Rate	6 Bachelor PSE	7 Access Rate	8A Grad PSE	8B Freshmen Top 10 %	10 BOT Choice	TOTAL
FAMU			•							•	2
FAU		•	•	•	•			•		•	6
FGCU			•	•				•			3
FIU	•	•	•	•	•	•	•	•		•	9
FPOLY	•	•	•			•	•		•	•	7
FSU	•	•	•	•	•					•	6
NCF		•	•			•				•	4
UCF		•	•		•					•	4
UF	•	•	•								3
UNF	•	•	•	•	•						5
USF		•	•			•					3
UWF	•	•	•	•	•	•	•	•		•	9
SUS TOTAL	6	10	12	6	6	5	3	4	1	8	61



# **2021 Accountability Plans**

**Dr. Christy England**

**Vice Chancellor for Academic and Student Affairs**

**Ms. Emily Sikes**

**Assistant Vice Chancellor for Strategic Initiatives and Economic Development**

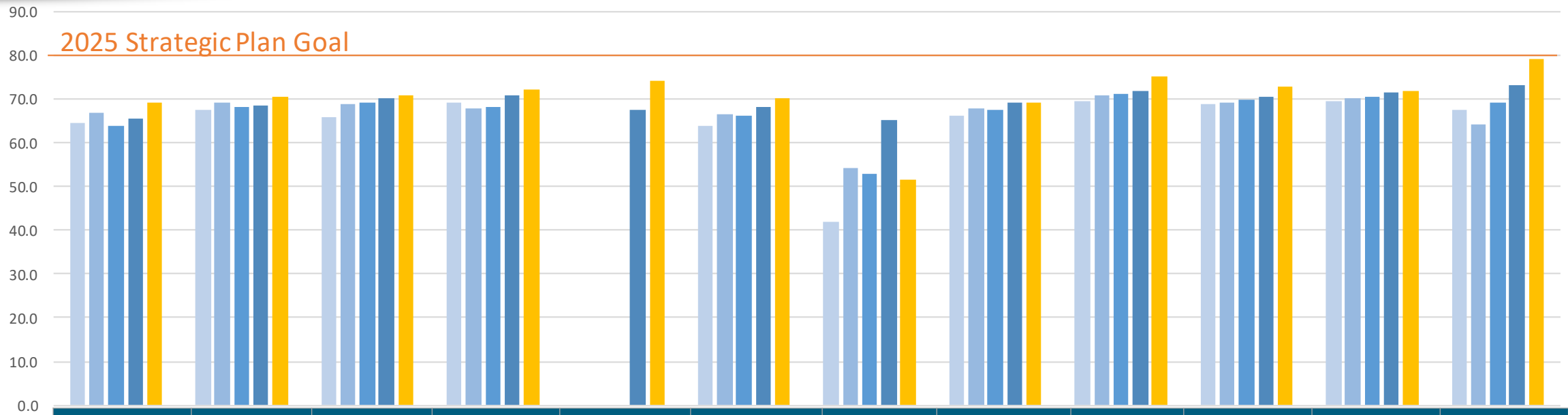
**June 22, 2021**

**[www.flbog.edu](http://www.flbog.edu)**

# **2021 Accountability Plans: Performance Based Funding**

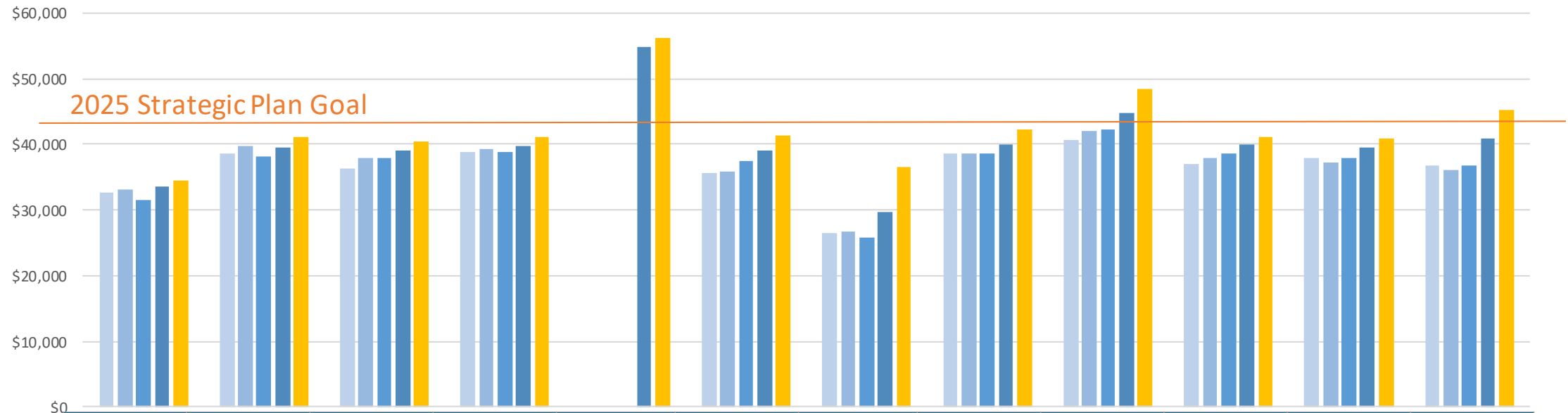


# PBF 1. Percent of Bachelor's Graduates Enrolled or Employed (\$25,000+) One Year After Graduation



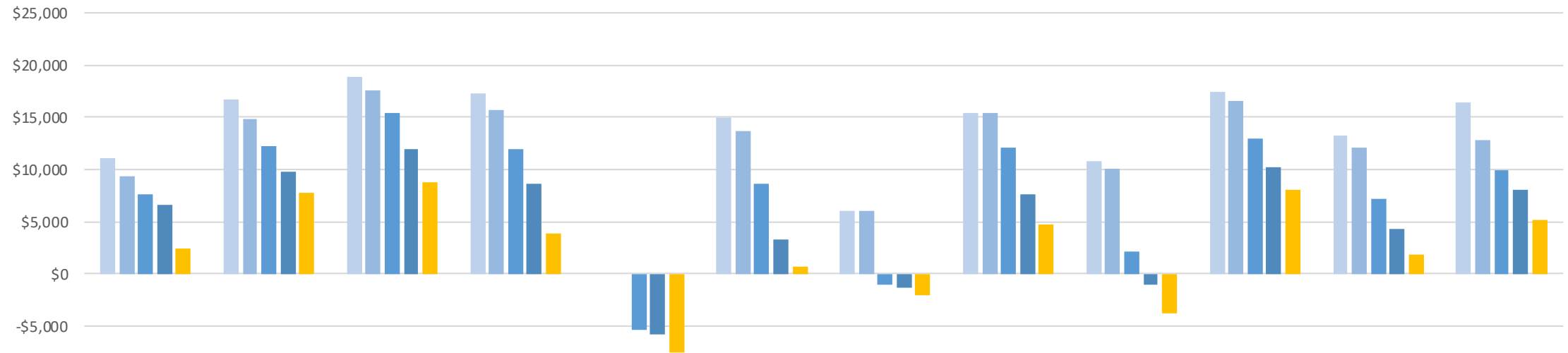
	FAMU	FAU	FGCU	FIU	FPOLY	FSU	NCF	UCF	UF	UNF	USF	UWF
2014-15	64.6	67.5	65.8	69.0	.	63.7	41.8	66.2	69.4	68.7	69.6	67.6
2015-16	66.7	69.0	68.7	67.9	.	66.6	54.2	67.9	70.9	69.3	70.0	64.0
2016-17	63.9	68.2	69.2	68.2	.	66.0	53.0	67.4	71.3	69.9	70.4	69.2
2017-18	65.6	68.4	70.2	70.9	67.5	68.0	65.3	69.1	71.8	70.5	71.6	73.2
2018-19	69.1	70.6	70.7	72.3	74.1	70.2	51.4	69.1	75.2	72.7	71.8	79.1
1-YR CHANGE	3.5	2.2	0.5	1.4	6.6	2.2	-13.9	0.0	3.4	2.2	0.2	5.9
2018-19 GOAL	72.5	72	71	70	72.8	70	61	69.5	72	72	72.8	73

# PBF 2. Median Wages of Bachelor's Graduates Employed Full-Time 1 Year After Graduation



	FAMU	FAU	FGCU	FIU	FPOLY	FSU	NCF	UCF	UF	UNF	USF	UWF
2014-15	\$32,700	\$38,700	\$36,300	\$38,800	.	\$35,700	\$26,500	\$38,600	\$40,700	\$37,000	\$38,000	\$36,700
2015-16	\$33,000	\$39,800	\$38,000	\$39,300	.	\$35,900	\$26,700	\$38,700	\$42,100	\$38,000	\$37,300	\$36,000
2016-17	\$31,600	\$38,200	\$38,000	\$38,800	.	\$37,500	\$25,900	\$38,600	\$42,200	\$38,600	\$38,000	\$36,800
2017-18	\$33,500	\$39,500	\$39,000	\$39,800	\$54,800	\$39,000	\$29,700	\$40,000	\$44,800	\$40,000	\$39,400	\$40,900
2018-19	<b>\$34,500</b>	<b>\$41,000</b>	<b>\$40,400</b>	<b>\$41,000</b>	<b>\$56,300</b>	<b>\$41,300</b>	<b>\$36,500</b>	<b>\$42,200</b>	<b>\$48,500</b>	<b>\$41,000</b>	<b>\$40,800</b>	<b>\$45,200</b>
1-YR CHANGE	<b>3%</b>	<b>4%</b>	<b>4%</b>	<b>3%</b>	<b>3%</b>	<b>6%</b>	<b>23%</b>	<b>6%</b>	<b>8%</b>	<b>3%</b>	<b>4%</b>	<b>11%</b>
2018-19 GOAL	\$35,900	\$41,000	\$40,500	\$40,500	\$45,000	\$40,000	\$31,000	\$40,600	\$43,000	\$40,640	\$40,375	\$40,900

# PBF 3. Average Cost to the Student for a Bachelor's Degree

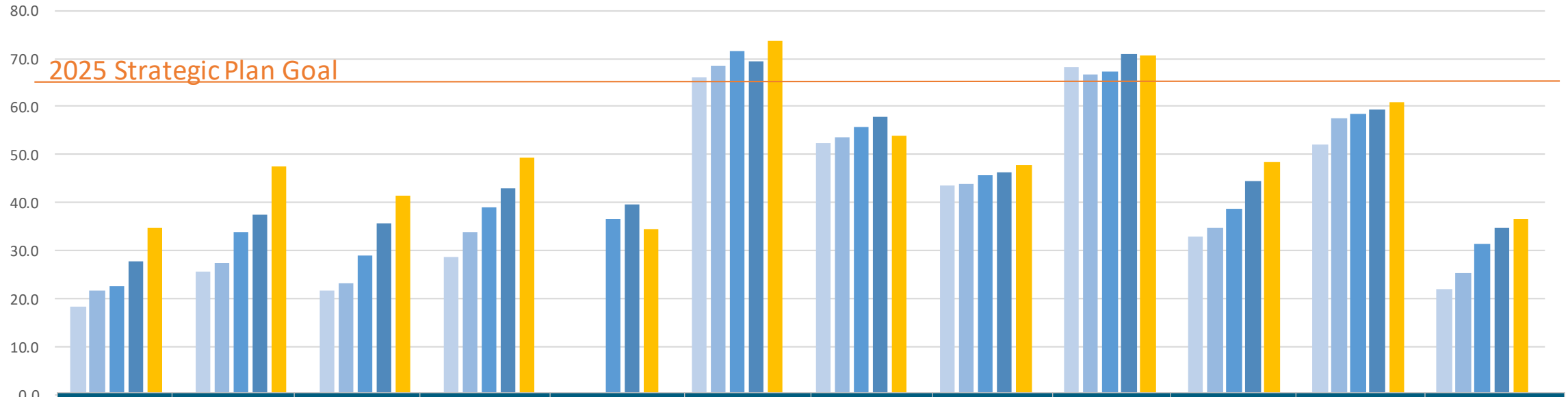


	FAMU	FAU	FGCU	FIU	FPOLY	FSU	NCF	UCF	UF	UNF	USF	UWF
2015-16	\$11,020	\$16,650	\$18,910	\$17,300	.	\$15,040	\$6,030	\$15,380	\$10,760	\$17,360	\$13,280	\$16,440
2016-17	\$9,410	\$14,880	\$17,630	\$15,670	.	\$13,690	\$5,990	\$15,400	\$10,120	\$16,540	\$12,040	\$12,850
2017-18	\$7,640	\$12,230	\$15,350	\$11,920	-\$5,330	\$8,680	-\$1,060	\$12,070	\$2,130	\$12,970	\$7,130	\$9,910
2018-19	\$6,570	\$9,760	\$11,970	\$8,670	-\$5,790	\$3,340	-\$1,400	\$7,580	-\$1,010	\$10,270	\$4,330	\$7,980
2019-20	<b>\$2,370</b>	<b>\$7,690</b>	<b>\$8,750</b>	<b>\$3,950</b>	<b>-\$7,540</b>	<b>\$760</b>	<b>-\$2,000</b>	<b>\$4,690</b>	<b>-\$3,750</b>	<b>\$8,100</b>	<b>\$1,810</b>	<b>\$5,170</b>
1-YR CHANGE	<b>-64%</b>	<b>-21%</b>	<b>-27%</b>	<b>-54%</b>	<b>-30%</b>	<b>-77%</b>	<b>-43%</b>	<b>-38%</b>	<b>-271%</b>	<b>-21%</b>	<b>-58%</b>	<b>-35%</b>
2019-20 GOAL	\$7,580	\$9,500	\$11,800	\$9,000	\$2,000	\$3,000	\$0	\$7,580	\$9,000	\$9,900	\$7,110	\$7,900



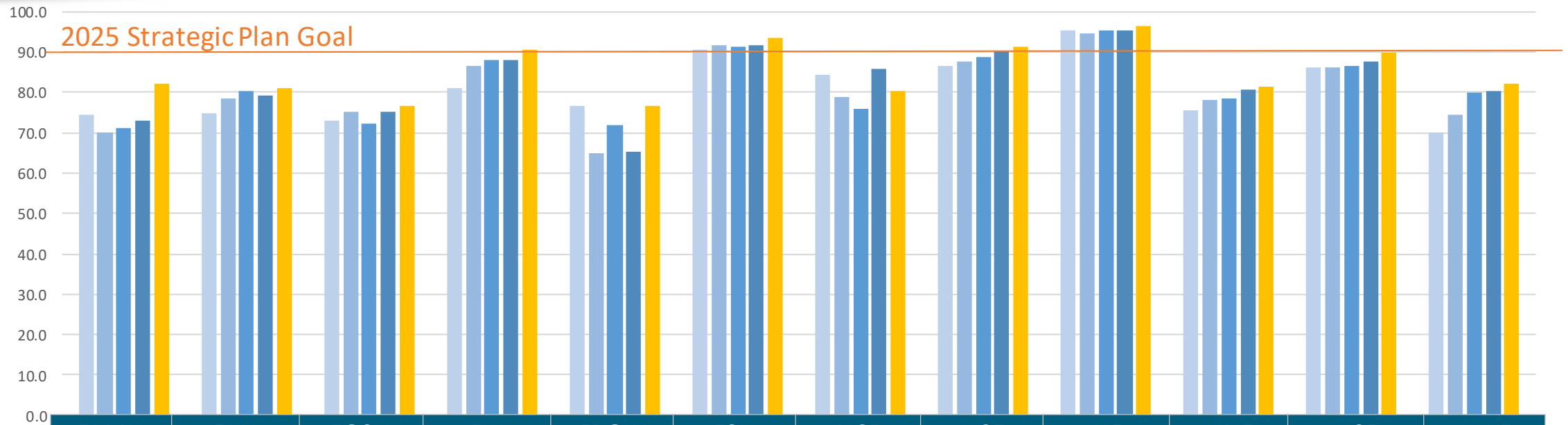
# PBF 4. FTIC Four-Year Graduation Rate

## Full-Time Only



	FAMU	FAU	FGCU	FIU	FPOLY	FSU	NCF	UCF	UF	UNF	USF	UWF
2012-16	18.3	25.6	21.7	28.6	.	66.0	52.5	43.6	68.3	32.9	52.0	22.0
2013-17	21.6	27.5	23.0	33.8	.	68.4	53.6	43.7	66.7	34.7	57.4	25.2
2014-18	22.5	33.9	28.8	38.9	36.6	71.5	55.7	45.7	67.3	38.6	58.6	31.3
2015-19	27.7	37.4	35.7	42.8	39.5	69.5	57.9	46.3	70.9	44.6	59.4	34.8
2016-20	34.6	47.5	41.4	49.3	34.3	73.8	53.9	47.7	70.7	48.3	60.9	36.4
1-YR CHANGE	6.9	10.1	5.7	6.5	-5.2	4.3	-4.0	1.4	-0.2	3.7	1.5	1.6
2016-20 GOAL	35	39	40	43	38	72	60	48	72	47	61.8	36

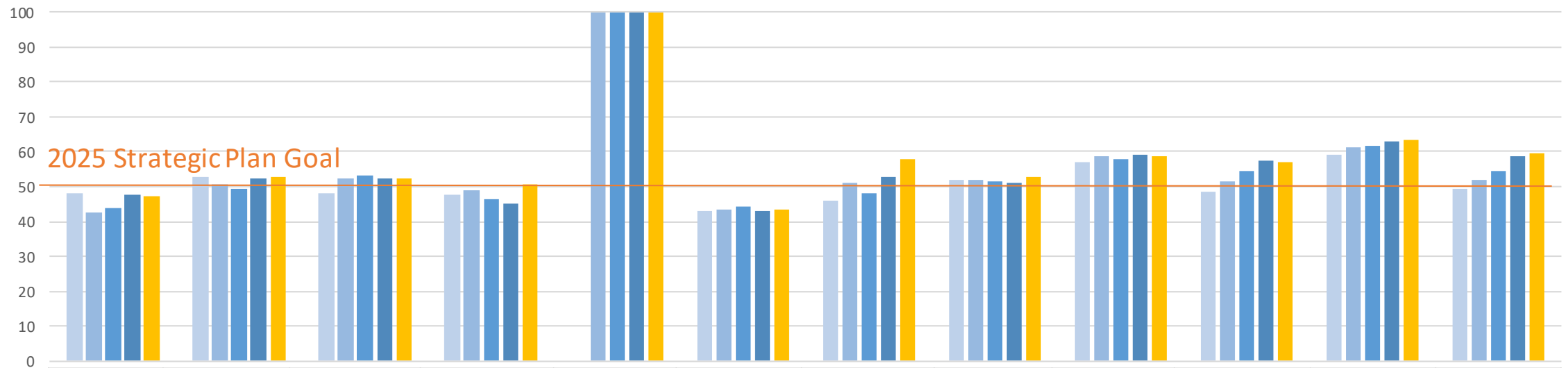
# PBF 5. Academic Progress Rate



	FAMU	FAU	FGCU	FIU	FPOLY	FSU	NCF	UCF	UF	UNF	USF	UWF
2015-16	74.6	74.7	72.9	80.9	76.8	90.4	84.3	86.5	95.5	75.4	86.1	70.1
2016-17	70.0	78.6	75.3	86.7	65.1	91.8	78.8	87.6	94.7	78.2	86.2	74.6
2017-18	71.3	80.4	72.4	88.0	71.7	91.4	75.9	88.7	95.2	78.6	86.6	79.8
2018-19	73.0	79.2	75.2	88.1	65.4	91.6	85.9	90.1	95.5	80.7	87.7	80.3
2019-20	82.2	81.0	76.7	90.4	76.6	93.6	80.3	91.4	96.3	81.3	89.9	82.2
1-YR CHANGE	9.2	1.8	1.5	2.3	11.2	2.0	-5.6	1.3	0.8	0.6	2.2	1.9
2019-20 GOAL	86	80.6	78	90	77	93	82	90.3	97	81	90.3	82

# PBF 6. Percent of Bachelor's Degrees in PSE

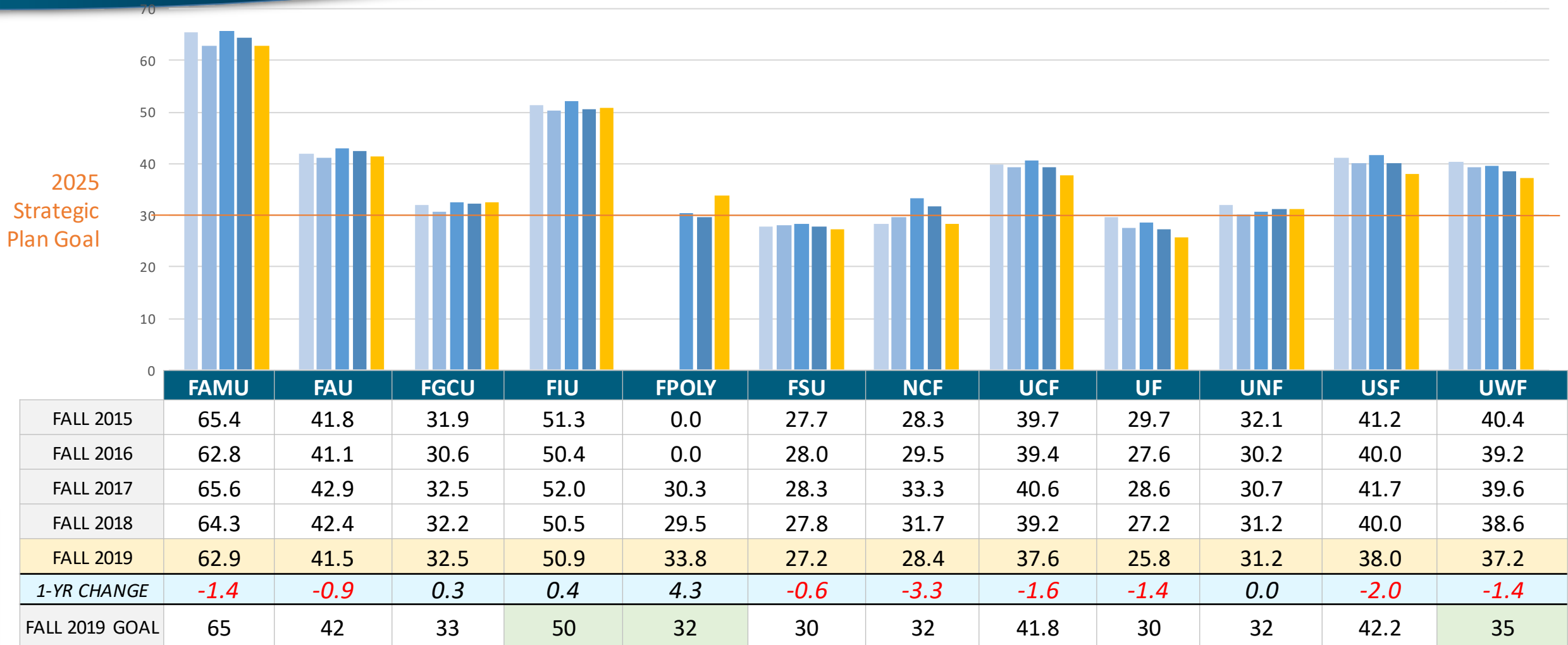
## Programs of Strategic Emphasis



	FAMU	FAU	FGCU	FIU	FPOLY	FSU	NCF	UCF	UF	UNF	USF	UWF
2015-16	48.0	52.7	47.9	47.7	.	42.8	45.9	52.0	56.9	48.7	59.0	49.5
2016-17	42.6	50.7	52.5	48.9	100	43.4	51.2	51.9	58.8	51.7	61.4	52.0
2017-18	43.7	49.3	53.1	46.3	100	44.4	48.0	51.6	57.7	54.3	61.5	54.3
2018-19	47.8	52.2	52.3	45.1	100	43.1	52.6	51.2	59.2	57.4	62.8	58.8
2019-20	47.2	52.8	52.2	50.5	100	43.2	57.9	52.9	58.8	57.0	63.5	59.4
1-YR CHANGE	-0.6	0.6	-0.1	5.4	0.0	0.1	5.3	1.7	-0.4	-0.4	0.7	0.6
2019-20 GOAL	52	52.9	54	50	100	47	52	53.4	59	58	63.5	58

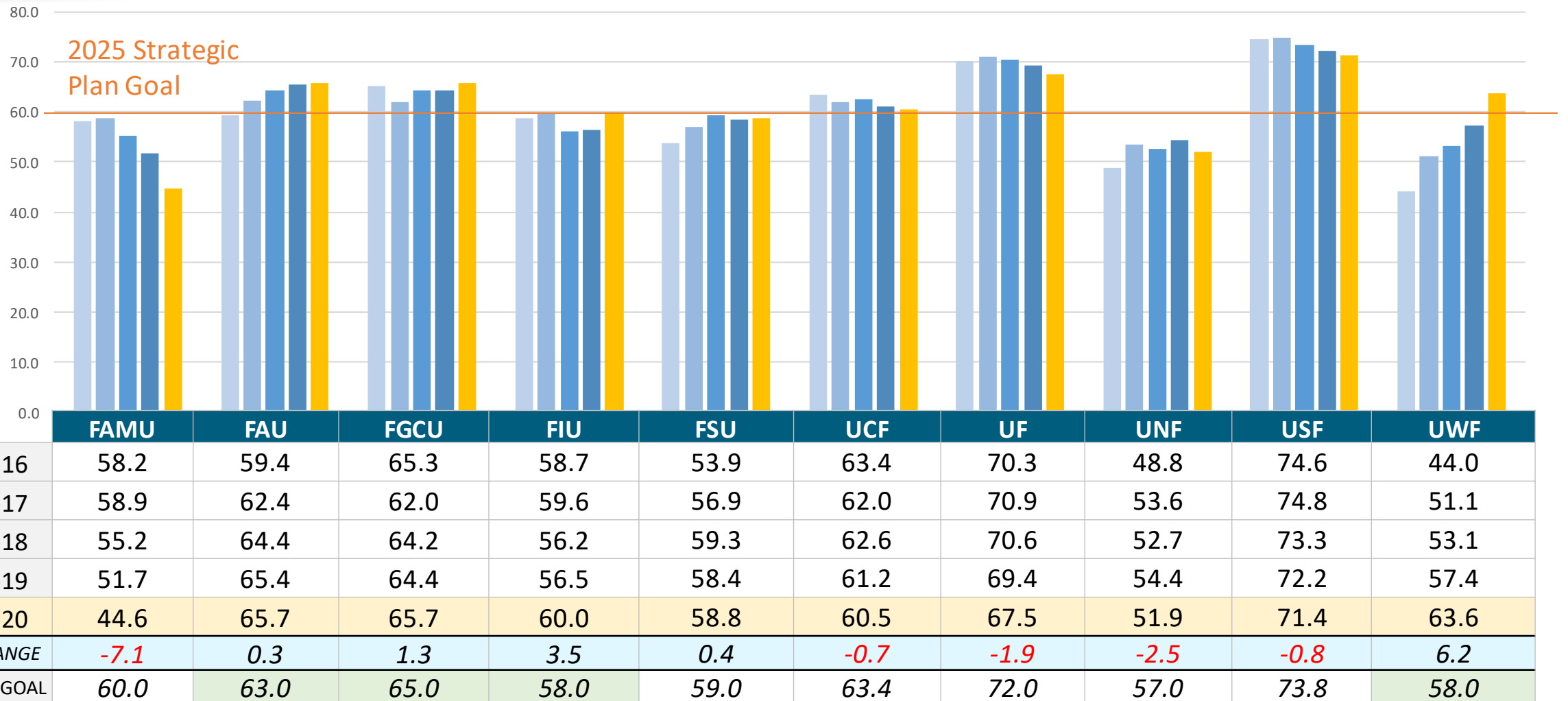
# PBF 7. University Access Rate

## Percent of Undergrads with Pell Grant



# PBF 8a. Percent of Graduate Degrees in PSE

## Programs of Strategic Emphasis



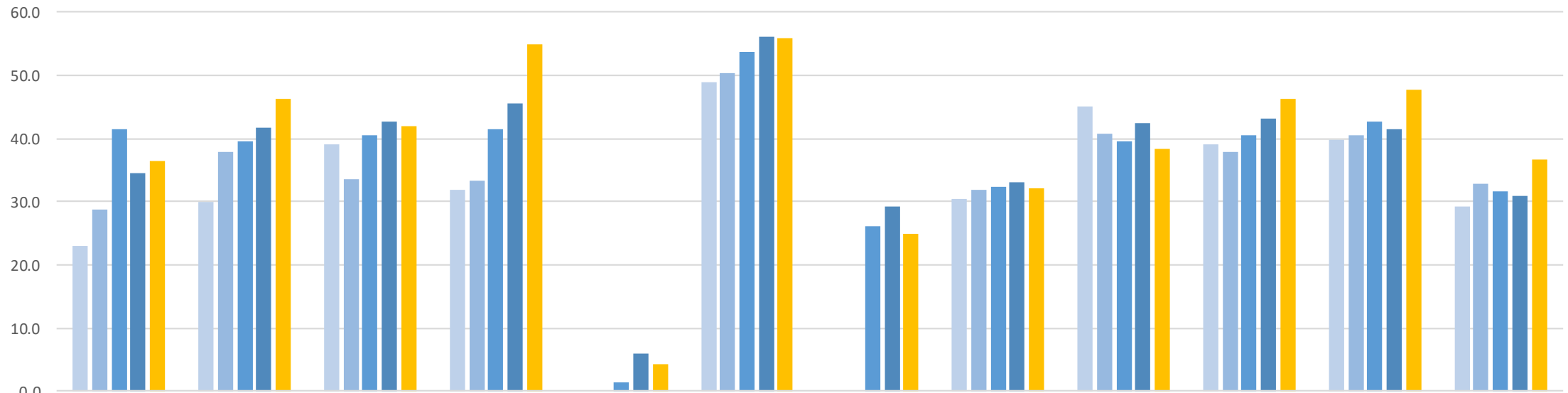
\*Poly & NCF both have an alternative metric for PBF #8.

# PBF 8b. Percent of Freshmen in Top 10% of High School Graduating Class



	FPOLY	NCF
FALL 2016	14	35.0
FALL 2017	22	38.2
FALL 2018	25	37.3
FALL 2019	25	21.6
FALL 2020	32	24.5
1-YR CHANGE	7.0	2.9
FALL 2020 GOAL	22	30

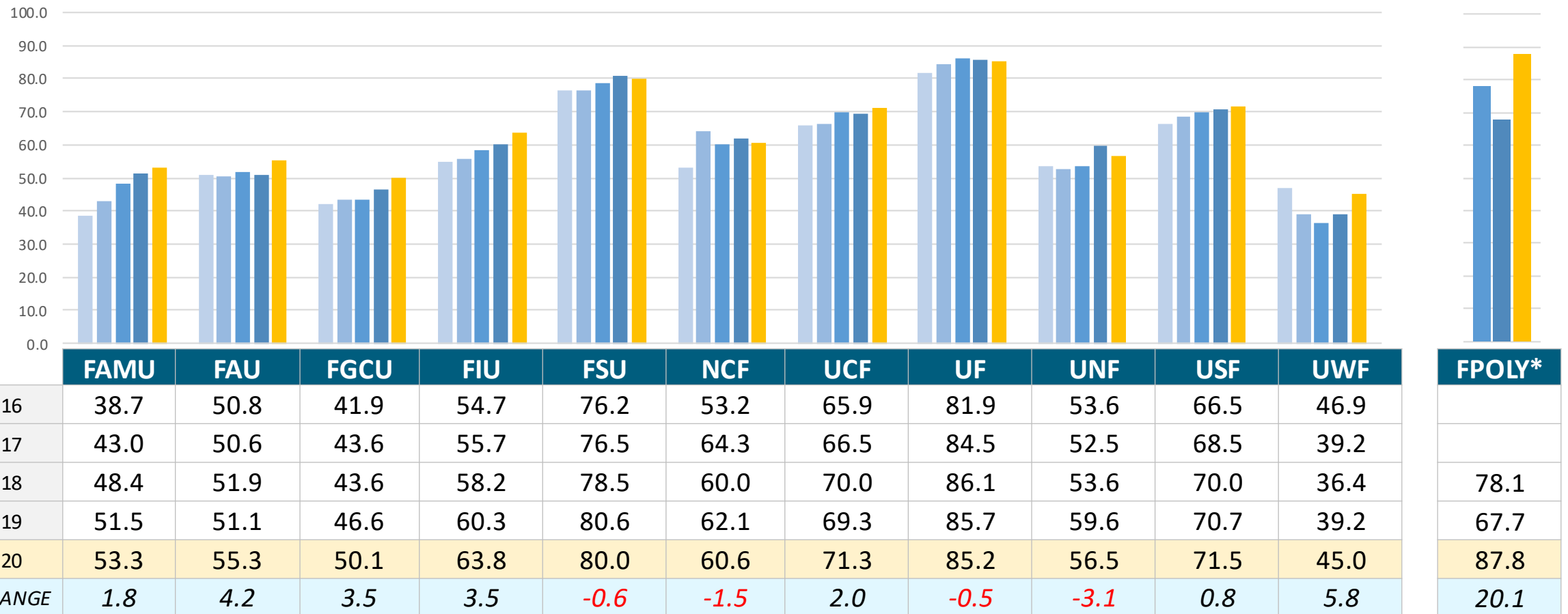
# PBF 9a. FCS AA Transfer Two-Year Graduation Rate (Full-Time students)



	FAMU	FAU	FGCU	FIU	FPOLY*	FSU	NCF*	UCF	UF	UNF	USF	UWF
2014-16	23.1	30.1	39.2	31.9	.	48.9	.	30.5	45.1	39.1	39.8	29.3
2015-17	28.8	37.8	33.6	33.4	.	50.3	.	31.8	40.7	37.9	40.6	32.8
2016-18	41.4	39.5	40.6	41.5	1.4	53.7	26.1	32.4	39.6	40.5	42.8	31.6
2017-19	34.6	41.8	42.7	45.6	5.9	56.1	29.3	33.0	42.5	43.2	41.4	31.0
2018-20	36.4	46.2	41.9	54.9	4.2	56.0	25.0	32.2	38.5	46.3	47.7	36.8
1-YR CHANGE	1.8	4.4	-0.8	9.3	-1.7	-0.1	-4.3	-0.8	-4.0	3.1	6.3	5.8

\*Three cohort rolling average used for FPOLY and NCF due to size.

# PBF 9b. FTIC Pell Recipient Six-Year Graduation Rate (Full-Time students)



\*In November 2020, the Board approved Poly to use an alternate metric for PBF 9b, FTIC Pell 2nd Year Retention for Full-Time students.



# PBF 10. BOT Choice



INST	METRIC	YEAR 1	YEAR 2	YEAR 3	YEAR 4	YEAR 5	YOY Δ	CURRENT GOAL
FAMU	Bachelor's Degrees Awarded to Transfers with AA Degrees from FCS	209	245	285	269	325	21%	310
FAU	Total Research Expenditures (\$M)	31	46	48	51	54	6%	53
FGCU	Bachelor's Degrees Awarded to Hispanic & African-Americans	549	608	706	833	800	-4%	850
FIU	Post-Doctoral Appointees	75	211	222	242	260	7%	255
FPU	Bachelor's Graduates with 2+ Workforce Experiences	.	.	.	73.2	84.6	11.4	75
FSU	Bachelor's Graduates who took an Entrepreneurship Class	7.2	9.5	11.3	13.1	14.5	1.4	14
NCF	FTIC Graduates Completing 3+ High-Impact Practices	38.4	46.7	57.9	65.7	86.2	20.5	59
UCF	Bachelor's Degrees Awarded to African American and Hispanic Students	33.2	35	35.5	37.9	39	1.1	39
UF	6-Year Graduation Rates	87.2	88	88.7	88.4	88.8	0.4	90
UNF	Undergraduate FTE in Online Courses	16.2	18.9	21.3	24.4	27.3	2.9	28
USF	6-Year Graduation Rates	66.4	68.8	71.2	73.2	73.1	-0.1	74
UWF	Baccalaureate Graduates Completing 2+ Types of High-Impact Practices	22.1	31.2	34.8	38.2	43	4.8	43

# Summary of University Current Year Goals Met: PBF



	1	2	3	4	5	6	7	8A	8B	10	
	Employed/ Enrolled	Median Wages	Cost to Student	4-yr Grad Rate	Progress Rate	Bachelor PSE	Access Rate	Grad PSE	Freshmen Top 10 %	BOT Choice	TOTAL
FAMU											2
FAU											6
FGCU											3
FIU											9
FPOLY											7
FSU											6
NCF											4
UCF											4
UF											3
UNF											5
USF											3
UWF											9
SUS TOTAL	6	10	12	6	6	5	3	4	1	8	61

# Overall PBF Performance 1-Yr Change



	FAMU	FAU	FGCU	FIU	FPOLY	FSU	NCF	UCF	UF	UNF	USF	UWF
1: % of Bach. Grads Enrolled or Employed (\$25,000+)												
2: Median Wages of Bach. Grads (employed full-time)												
3: Average Cost to the Student												
4: FTIC Four-Year Graduation Rate												
5: Academic Progress Rate												
6: % of Bachelor's Degrees in PSE												
7: University Access Rate												
8a: % of Graduate Degrees in PSE												
8b: % of Freshmen in Top 10% of HS Class												
9a: FCS AA Transfer 2-Year Graduation Rate												
9b: FTIC Pell Recipient 6-Year Graduation Rate												
10: BOT CHOICE												

# 2022 Proposed Goal – 2022 Approved Goal

## PBF Metrics



	1	2	3	4	5	6	7	8A	8B	10
	Employed/ Enrolled	Median Wages	Cost to Student	4-yr Grad Rate	Progress Rate	Bachelor PSE	Access Rate	Grad PSE	Freshmen Top 10 %	BOT Choice
FAMU										
FAU										
FGCU										
FIU										
FPOLY										
FSU										
NCF										
UCF										
UF										
UNF										
USF										
UWF										
LOWERED	3	1	0	1	3	1	4	3	1	3
INCREASED	1	3	8	5	0	2	1	3	1	3
SAME	8	8	4	6	9	9	7	4	0	6

Goals Lowered 20 Goals Increased 27 Remained the Same 61

# **2021 Accountability Plans: Key Performance Indicators**

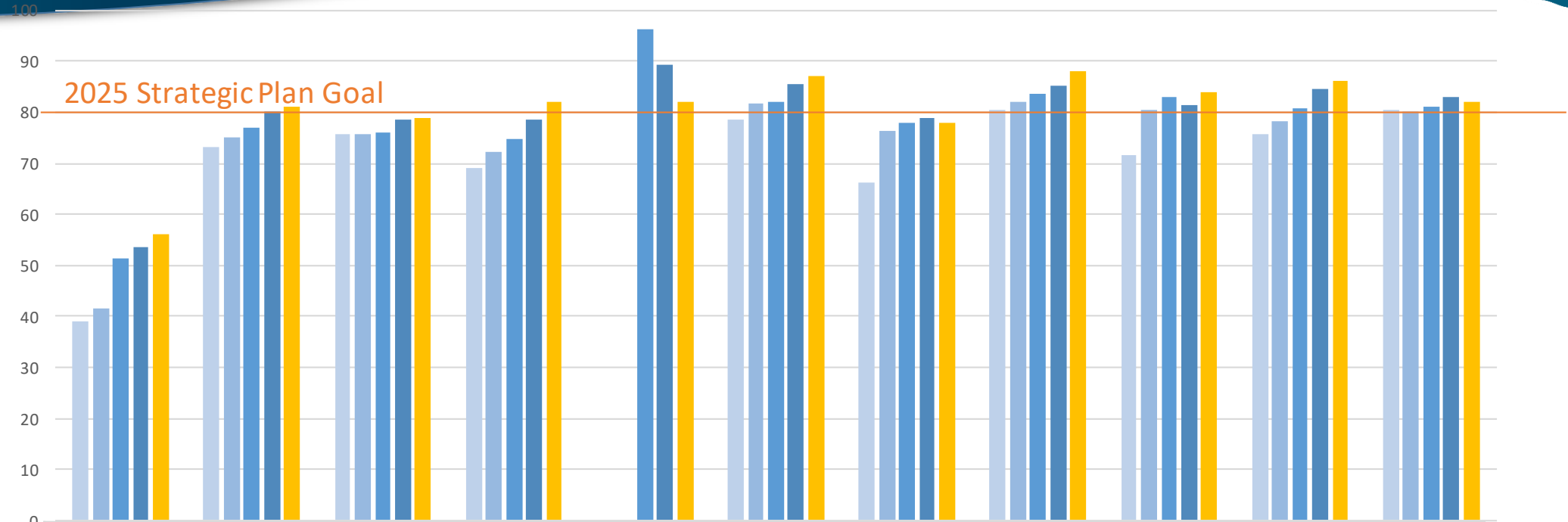


# Overall KPI Performance 1-Year Change



	FAMU	FAU	FGCU	FIU	FPOLY	FSU	UCF	UF	UNF	USF	UWF
1: Public University National Ranking											
2: Freshmen in Top 10% of High School Class											
3: Time to Degree for FTICs in 120hr programs											
4: % of Bachelor's Degrees Awarded w/o Excess Hours											
5: 6-Year FTIC Graduation Rates											
6: FCS AA Transfer 3-Year Graduation Rate											
7: Pell Recipient 4-Year Graduation Rate											
8: Bachelor's Degrees Awarded											
9: Graduate Degrees Awarded											
10: Bachelor's Degrees: African-American & Hispanic Students											
11: % of Adult (Aged 25+) Undergrad Enrolled											
12: % of Undergraduate FTE in Online Courses											
13: % of Bachelor's Degrees in STEM & Health											
14: % of Graduate Degrees in STEM & Health											
16: National Academy Memberships											
17: Faculty Awards											
18: Total Research Expenditures											
19: Research Expenditures from External Sources											
20: Utility Patents Awarded											
21: # of Licenses/Options Executed											
22: # of Start-up Companies Created											

# KPI 4: % of Bachelor's Degrees without Excess Hours

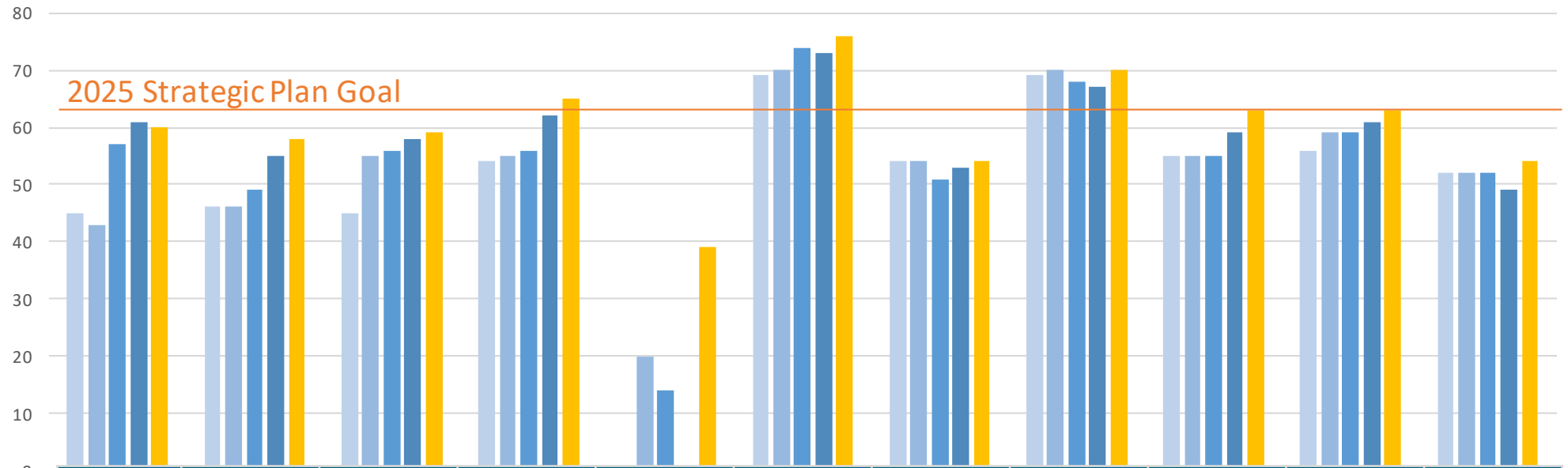


	FAMU	FAU	FGCU	FIU	FPOLY	FSU	UCF	UF	UNF	USF	UWF
2015-16	39	73.2	75.6	69.1	-	78.7	66.3	80.3	71.7	75.6	80.5
2016-17	41.6	75.1	75.7	72.2	-	81.7	76.4	82.1	80.3	78.3	80.2
2017-18	51.4	77.1	76.1	74.7	96.3	82.1	77.8	83.6	83.1	80.7	81.1
2018-19	53.5	80	78.6	78.6	89.2	85.6	79	85.3	81.5	84.7	82.9
2019-20	56	81	79	82	82	87	78	88	84	86	82
1 YR-CHANGE	2.5	1	0.4	3.4	-7.2	1.4	-1	2.7	2.5	1.3	-0.9
2019-20 GOAL	62	80.1	79	78.9	75	86	79.2	85	82	85	82

# KPI 6: 3-Year Grad Rates: FCS-AA Degree Transfers



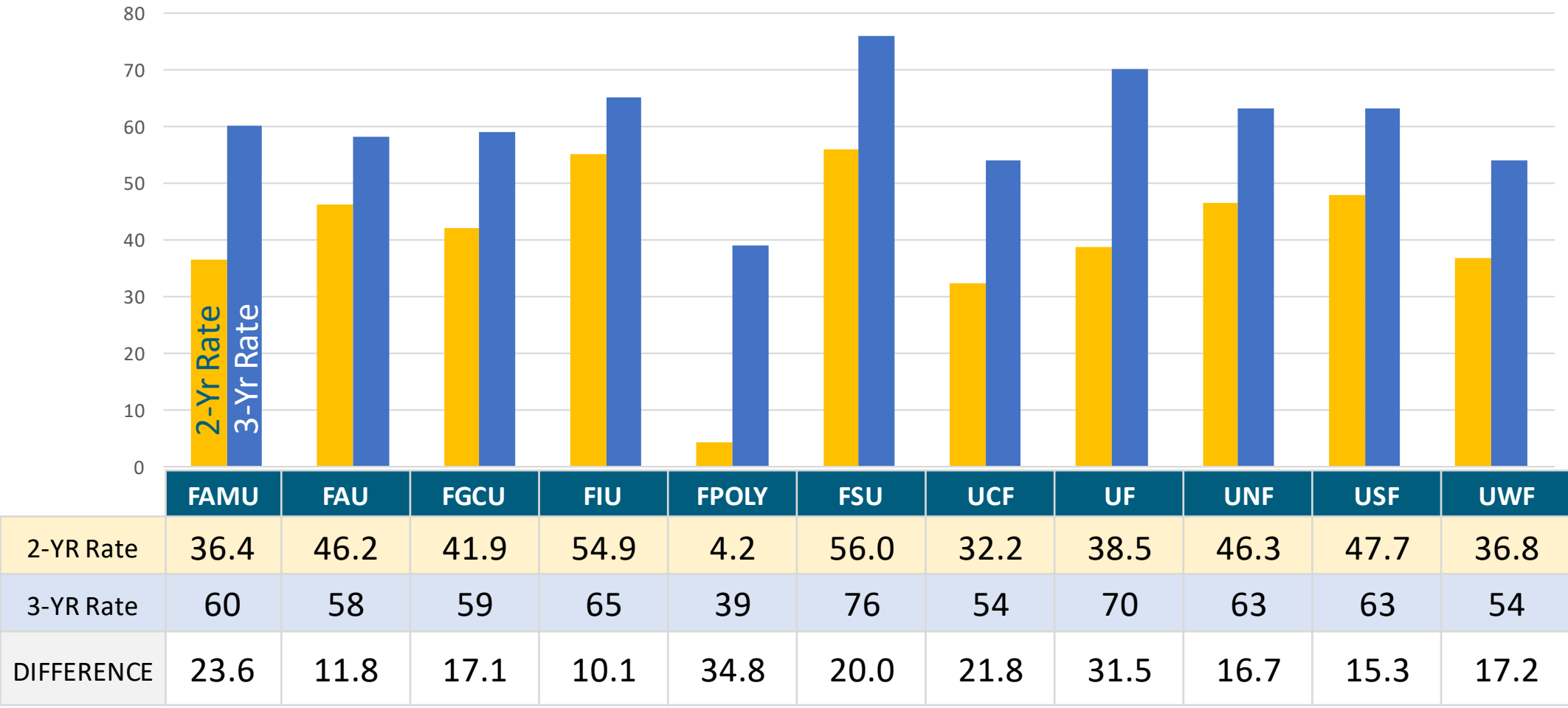
Different from PBF 9b:  
**Includes FT & PT students**



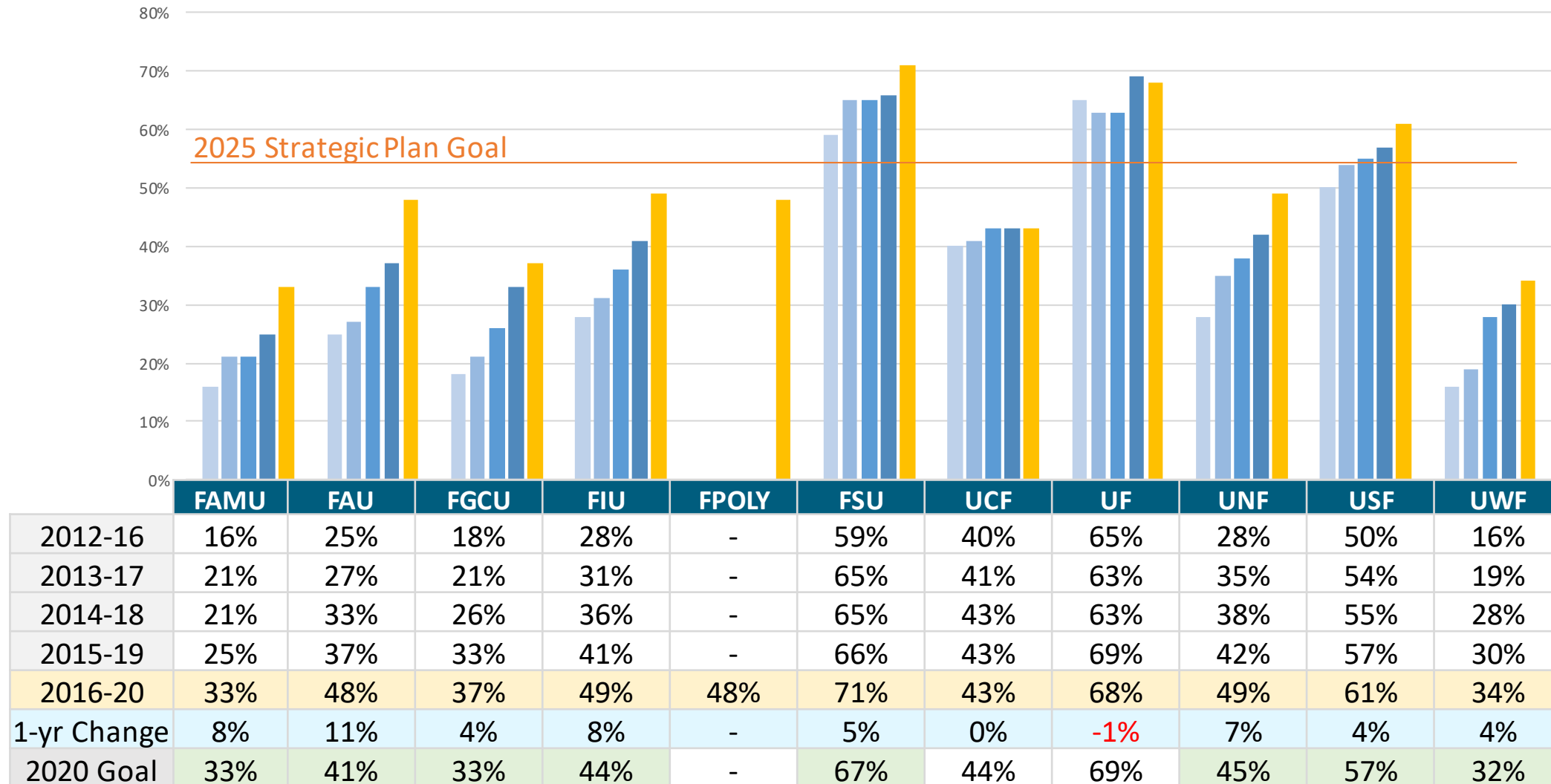
	FAMU	FAU	FGCU	FIU	FPOLY	FSU	UCF	UF	UNF	USF	UWF
2013-16	45	46	45	54	0	69	54	69	55	56	52
2014-17	43	46	55	55	20	70	54	70	55	59	52
2015-18	57	49	56	56	14	74	51	68	55	59	52
2016-19	61	55	58	62	0	73	53	67	59	61	49
2017-20	60	58	59	65	39	76	54	70	63	63	54
1-YR CHANGE	-1	3	1	3	--	3	1	3	4	2	5
2017-20 GOAL	62	56	58	62.5	16	74	53	67	60	61	51



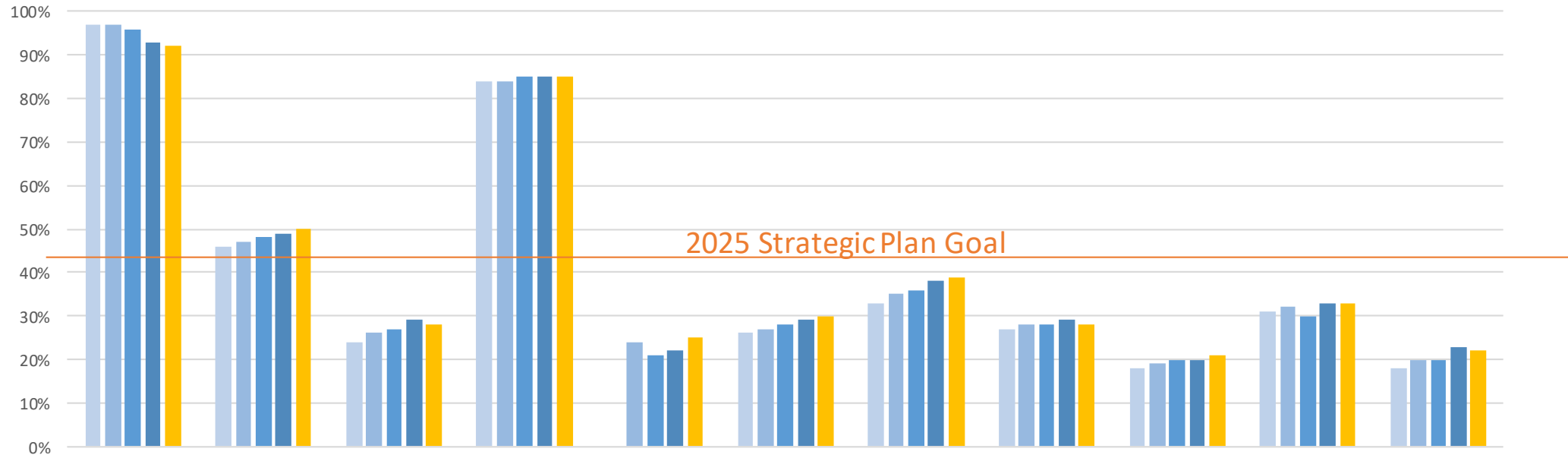
# PBF 9b & KPI 6: FCS AA Transfers 2-yr & 3-yr Grad Rate



# KPI 7: 4-Year Grad Rates: FTIC Pell Students

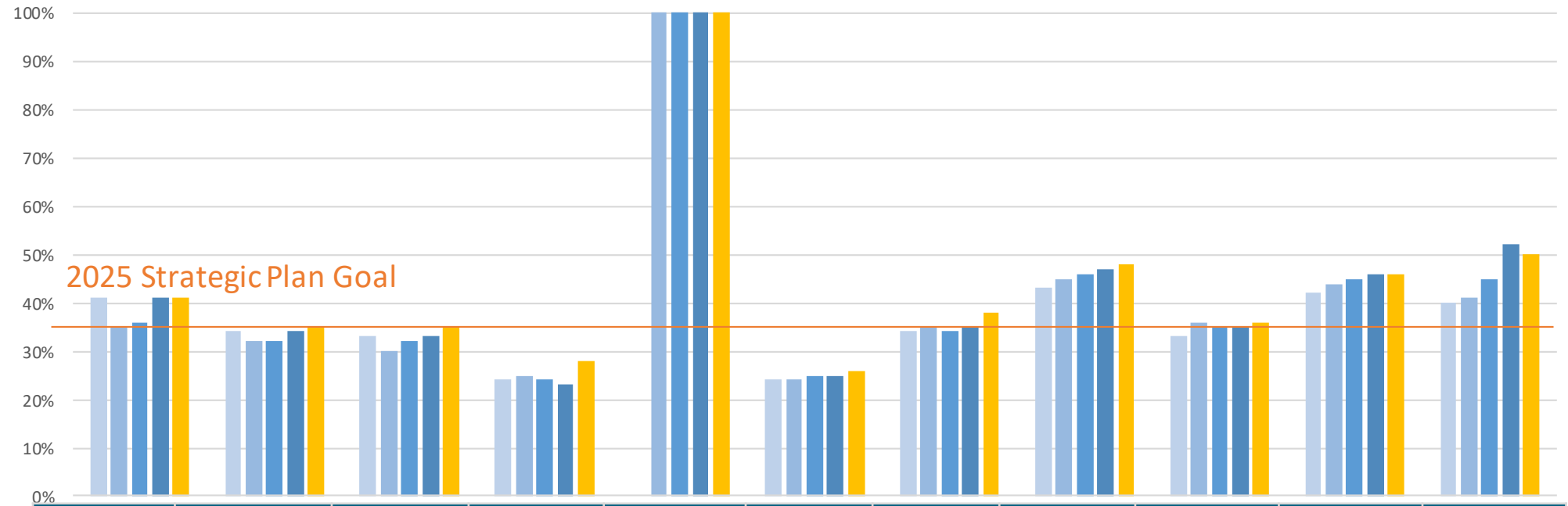


# KPI 10. % of Bachelor's Degrees Awarded to African-American & Hispanic Students



	FAMU	FAU	FGCU	FIU	FPOLY	FSU	UCF	UF	UNF	USF	UWF
2015-16	97%	46%	24%	84%	0%	26%	33%	27%	18%	31%	18%
2016-17	97%	47%	26%	84%	24%	27%	35%	28%	19%	32%	20%
2017-18	96%	48%	27%	85%	21%	28%	36%	28%	20%	30%	20%
2018-19	93%	49%	29%	85%	22%	29%	38%	29%	20%	33%	23%
2019-20	92%	50%	28%	85%	25%	30%	39%	28%	21%	33%	22%
1-yr Change	-1%	1%	-1%	0%	3%	1%	1%	-1%	1%	0%	-1%
2019-20 Goal	94%	50%	30%	85%	25%	30%	39%	28%	21%	33%	24%

# KPI 13. % of Bachelor's Degrees in STEM & Health



	FAMU	FAU	FGCU	FIU	FPOLY	FSU	UCF	UF	UNF	USF	UWF
2015-16	41%	34%	33%	24%	0%	24%	34%	43%	33%	42%	40%
2016-17	35%	32%	30%	25%	100%	24%	35%	45%	36%	44%	41%
2017-18	36%	32%	32%	24%	100%	25%	34%	46%	35%	45%	45%
2018-19	41%	34%	33%	23%	100%	25%	35%	47%	35%	46%	52%
2019-20	41%	35%	35%	28%	100%	26%	38%	48%	36%	46%	50%
1-YR-CHANGE	0%	1%	2%	5%	0%	1%	3%	1%	1%	0%	-2%
2019-20 Goal	45%	32%	37%	25%	100%	26%	37%	47%	39%	49%	52%

# 2022 Proposed Goal – 2022 Approved Goal

## KPI Metrics



### Teaching & Learning Metrics

	1	2	3	4	5	6	7	8	9	10	11	12	13	14
	College Rankings	Top10% HS Class	Time to Degree	% Degrees w/o Excess Hrs	6YR FTIC Grad Rate	3YR FCS AA Transfer Grad Rate	4YR Pell Grad Rate	BA Degrees Awarded	Grad Degrees Awarded	% BA's to Afr.-Am. & Hispanic	% of UG's Aged 25+	% of UG FTE Online	% BA's in STEM/Health	% Grad's in STEM/Health
FAMU														
FAU														
FGCU														
FIU														
FPOLY														
FSU														
UCF														
UF														
UNF														
USF														
UWF														
LOWERED	1	0	0	0	1	0	0	1	2	1	3	0	1	2
INCREASED	0	2	1	1	0	3	5	2	2	1	0	6	1	3
SAME	10	9	10	10	10	8	5	8	7	9	8	5	9	6

Goals Lowered

12

Goals Increased

27

Remained the Same

114

# 2022 Proposed Goal – 2022 Approved Goal

## KPI Metrics



### Scholarship, Research, & Innovation

	16	17	18	19	20	21	22
	Nat'l Academy Members	Faculty Awards	Research Expend. (Total)	Research Expend. (External)	Patents	Licenses/Options	Start-Ups
FAMU							
FAU							
FGCU							
FIU							
FPOLY							
FSU							
UCF							
UF							
UNF							
USF							
UWF							
LOWERED	2	0	2	3	1	0	0
INCREASED	0	0	4	3	0	1	1
SAME	9	11	5	5	10	10	10

Goals Lowered

8

Goals Increased

9

Remained the Same

60

# KPI 15. Licensure Exam Pass Rate: 2021 Summary



## Licensure Exams in the Accountability Plans (# of institutions)\*

**Nursing (10)**  
**Physical Therapy (7)**

**Pharmacy (3)**  
Medicine (5)

Veterinary (1)  
Dentistry (1)

**Law (4)**

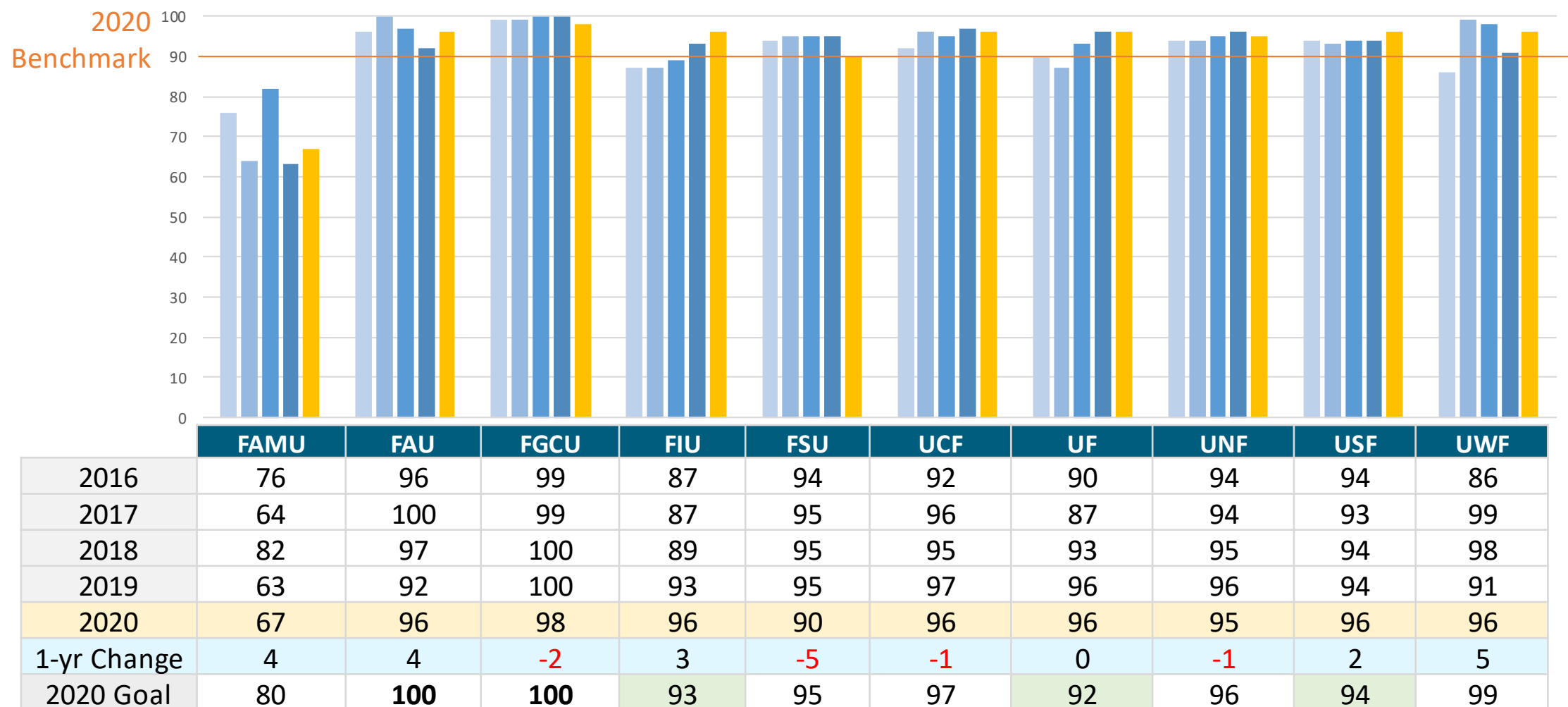
	FAMU	FAU	FGCU	FIU	FSU	UCF	UF	UNF	USF	UWF
ABOVE/TIED	0	3	2	5	3	4	9	2	4	1
BELOW	4	0	0	0	1	0	0	0	1	0
1-YR CHANGE	-	+1	-	+1	+1	-	+2	-	+1	-

= 5 pts or more below benchmark

= less than 5 pts below benchmark

\*Poly & NCF do not have programs that require licensure exams.

# Exam Pass Rates: Nursing

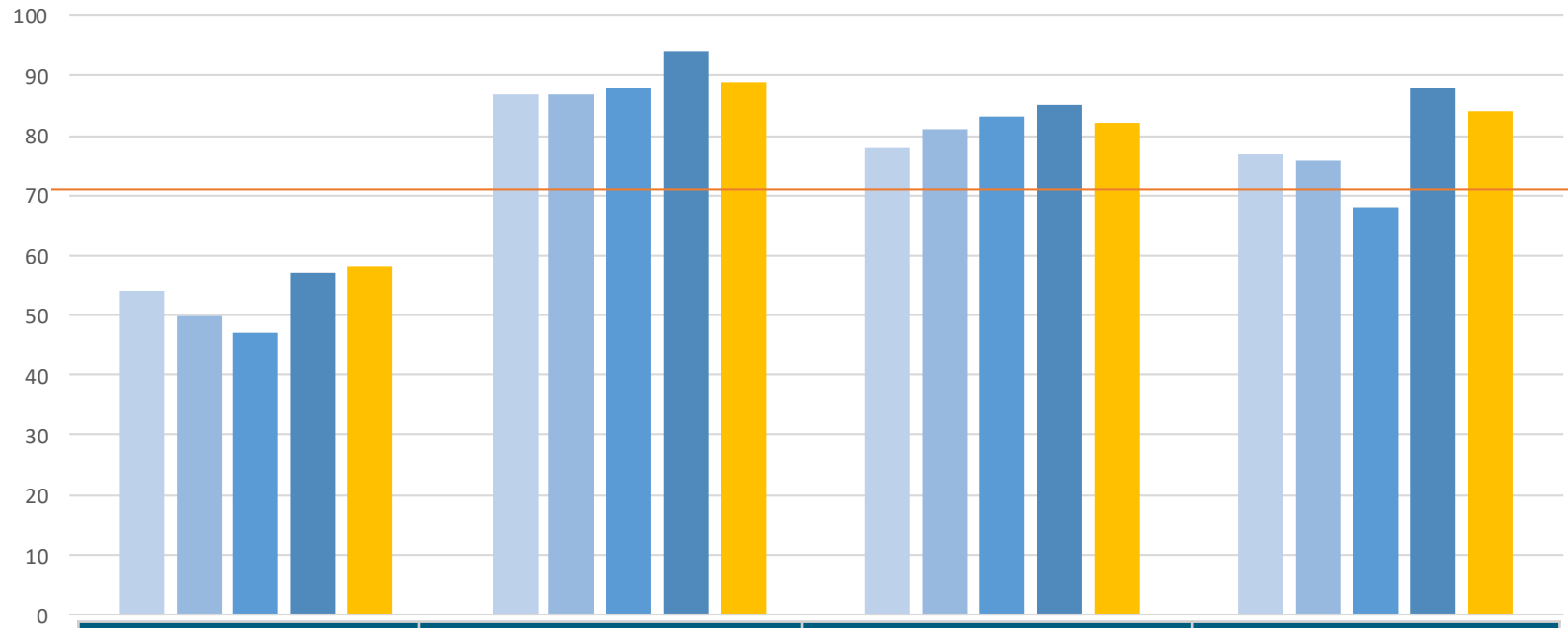




# Exam Pass Rate: Law



2020  
Benchmark

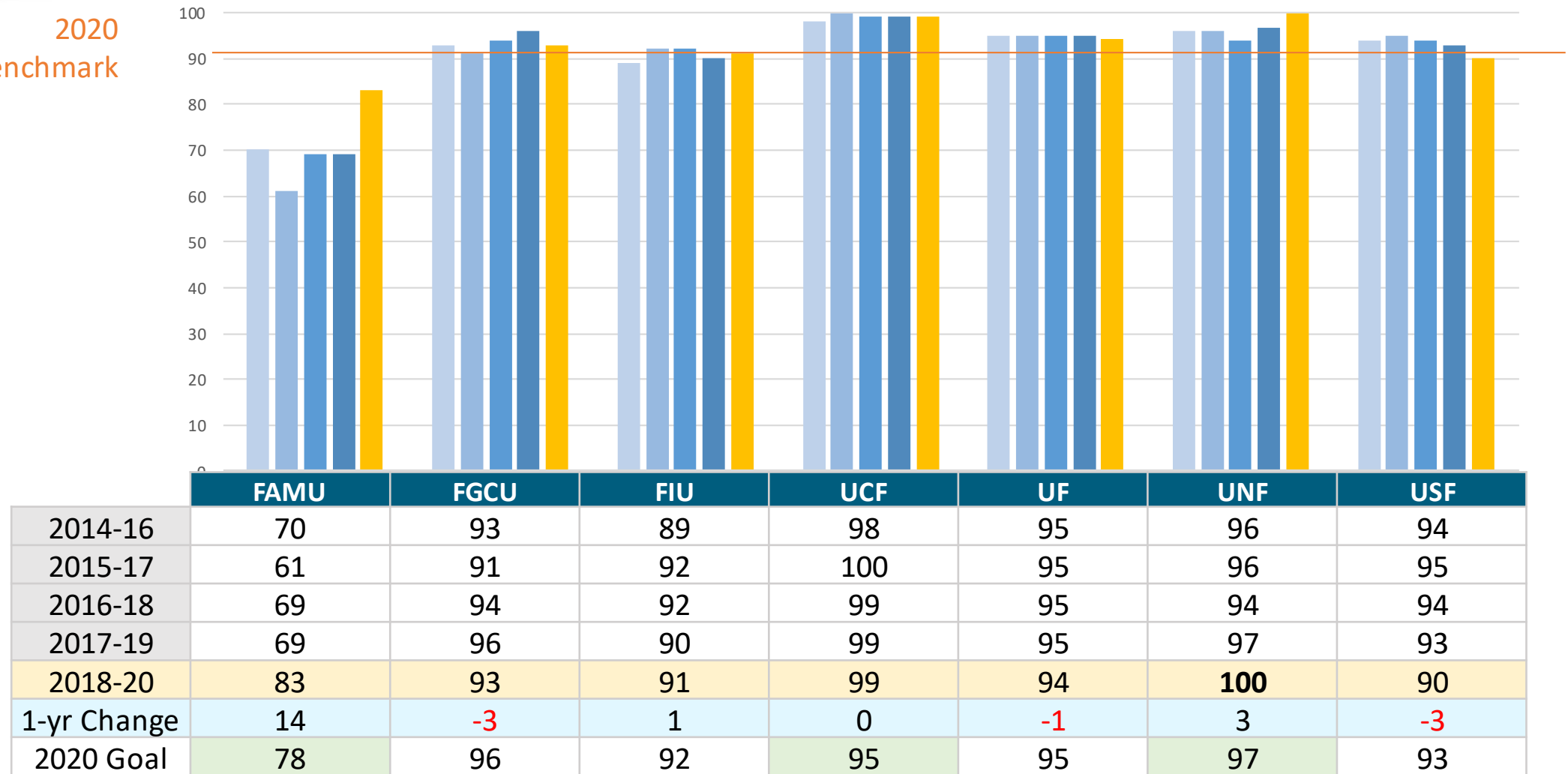


	FAMU	FIU	FSU	UF
2016	54	87	78	77
2017	50	87	81	76
2018	47	88	83	68
2019	57	94	85	88
2020	58	89	82	84
1-yr Change	1	-5	-3	-4
2020 Goal	80	85	84	88

# Exam Pass Rate: Physical Therapy



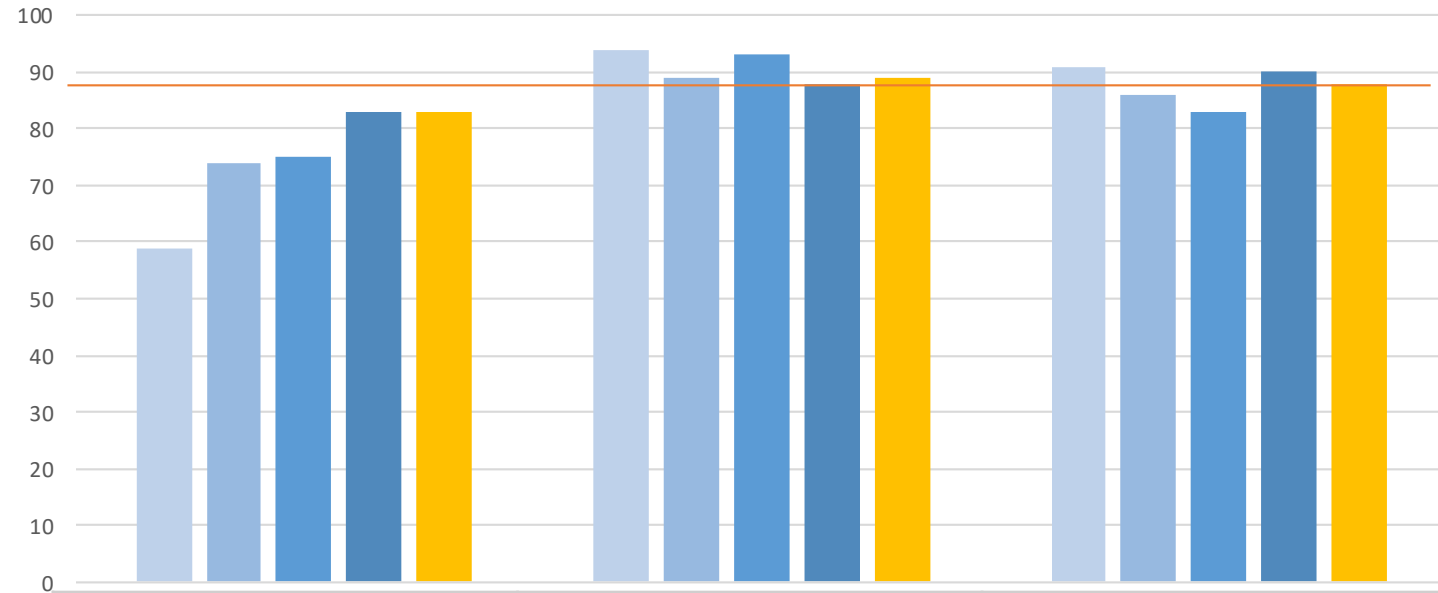
2020  
Benchmark



# Exam Pass Rate: Pharmacy



2020  
Benchmark



	FAMU	UF	USF
2016	59	94	91
2017	74	89	86
2018	75	93	83
2019	83	88	90
2020	83	89	88
1-yr Change	0	1	-2
2020 Goal	85	92	90

# 2022 Proposed Goal – 2022 Approved Goal

## KPI Metrics



### Professional Licensure & Certification Exam Pass Rates

	15A	15B	15C	15D	15E	15G	15K
	Nursing	Law	Physical Therapy	Medicine (2YR)	Medicine (4YR-CK)	Pharmacy	Veterinary
FAMU							
FAU							
FGCU							
FIU							
FSU							
UCF							
UF							
UNF							
USF							
UWF							
LOWERED	0	0	0	0	0	0	0
INCREASED	2	0	1	2	1	0	0
SAME	8	4	6	4	5	3	1

Goals Lowered 0 Goals Increased 6 Remained the Same 31

# **2021 Accountability Plans: Preeminent Research Universities**



# Preeminent Research Universities



METRICS		BENCHMARKS	Preeminent		
			FSU	UF	USF-T
A	GPA and SAT Score	4.0 / 1200	4.3 / 1328	4.5 / 1382	4.2 / 1311
B	National Rankings	2	8	10	6
C	Freshman Retention	90	94	97	92
D	4yr Graduation Rate	60	74	71	63
E	Nat. Academy Members	6	7	28	15
F	Total R&D Expenditures	200	270	890	290
G	Non-Health Sciences R&D	150	233	562	218
H	Nat. Ranking in R&D	5	7	8	7
I	Patents Awarded	100	128	377	348
J	Doctoral Degrees	400	554	1495	772
K	Post-Doctoral Appointees	200	254	671	297
L	Endowment Size (\$M)	500	700	1847	532
	<b>BENCHMARKS MET</b>		<b>12</b>	<b>12</b>	<b>12</b>

Emerging Preeminent	
UCF	FIU
4.2 / 1315	4.3 / 1270
2	1
92	91
48	49
8	7
188	210
170	196
6	6
145	189
466	430
171	260
163	219
<b>8</b>	<b>9</b>

# **2021 Accountability Plans: Academic Program Coordination Graduation Rate Improvement Plans**



# Academic Programs 2021-22



	FAMU	FAU	FGCU	FIU	POLY	FSU	UCF	UF	UNF	USF	UWF	Total
<b>Bachelors</b>	1	2	1	4	3	-	-	1	4	-	-	<b>16</b>
<b>Masters</b>	1	1	2	2	2	-	3	5	-	-	-	<b>16</b>
<b>Doctoral</b>	1	1	-	1	-	-	2	-	-	-	-	<b>5</b>
<b>Total</b>	<b>3</b>	<b>4</b>	<b>3</b>	<b>7</b>	<b>5</b>	<b>0</b>	<b>5</b>	<b>6</b>	<b>4</b>	<b>0</b>	<b>0</b>	<b>37</b>

**92%**  
Programs of  
Strategic  
Emphasis



**Education 4**



**Global 3**



**Health 2**



**STEM 25**

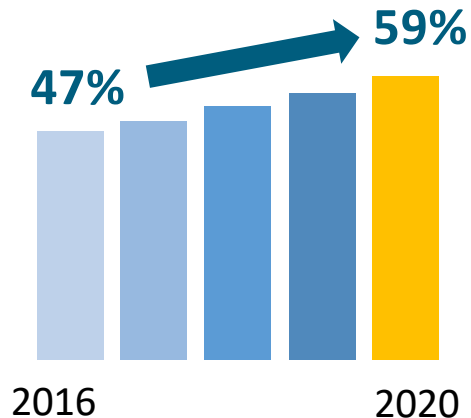


# Graduation Rate Improvement Plans: Annual Update



- ✓ Required in Statute beginning June 2018
- ✓ Identify initiatives for timely graduation
- ✓ Implement financial aid program to support students taking 15 credit hours

## System 4-yr grad rates continue to increase



## Common Themes in Plans

- ↑ More financial aid to support on-time graduation
- ↑ More offerings of in-demand courses
- 📈 Focus on 15 hrs
- 👥 Team-based student support: advising, mentoring, & tutoring

## Initiative Highlights

**FAU** ↑10.1%  
Expanded launch scholarships to incentivize 15 hours a semester

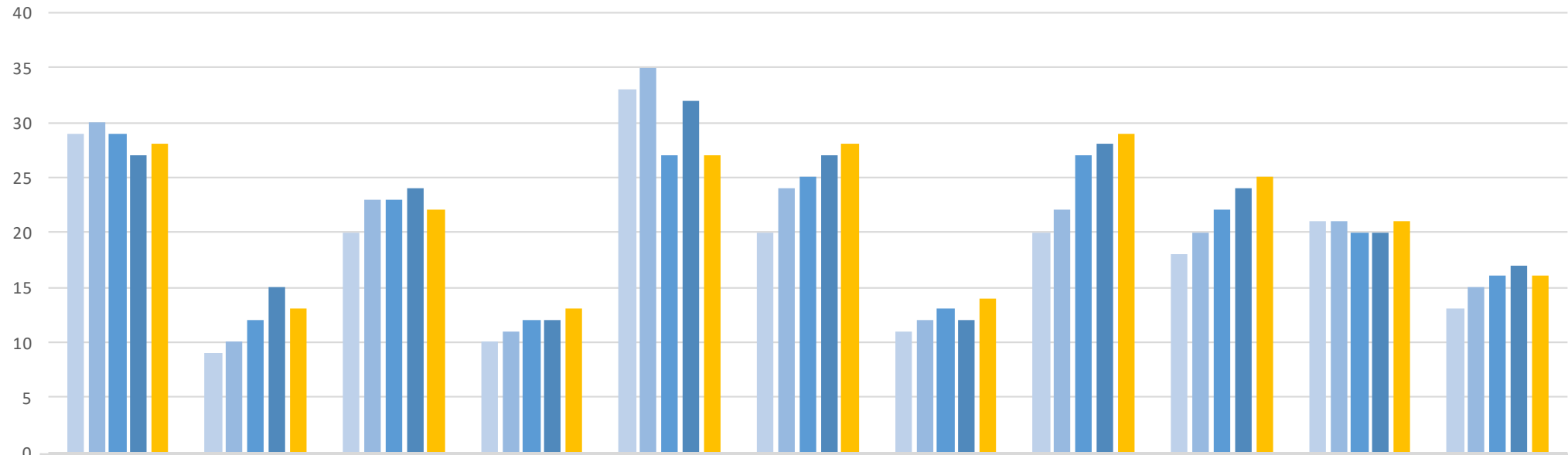
**FAMU** ↑6.9%  
Increased textbook affordability

**FIU** ↑6.5%  
Used cross-unit collaborative groups to identify barriers

# 2021 Accountability Plans: Enrollment

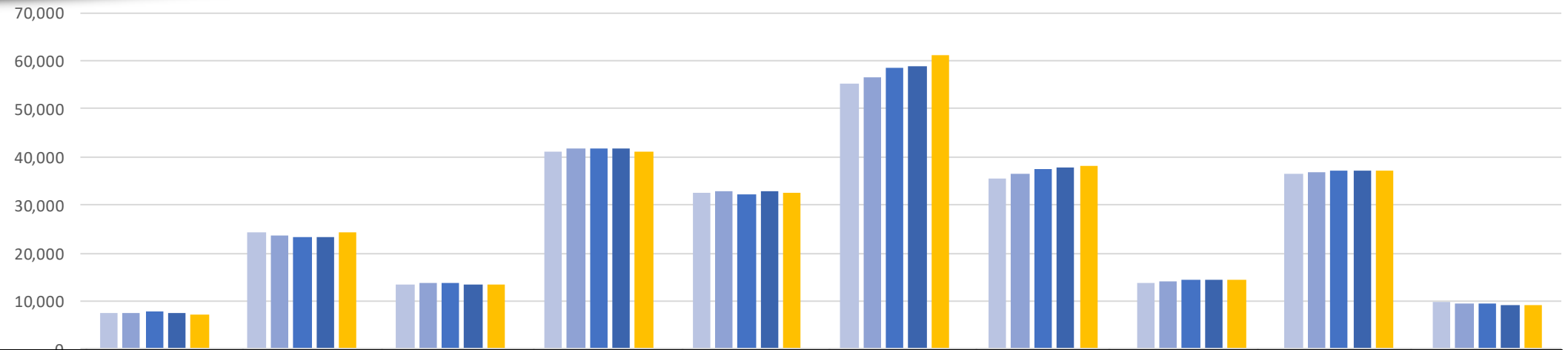


# % of Undergraduates Completing 15 Credits



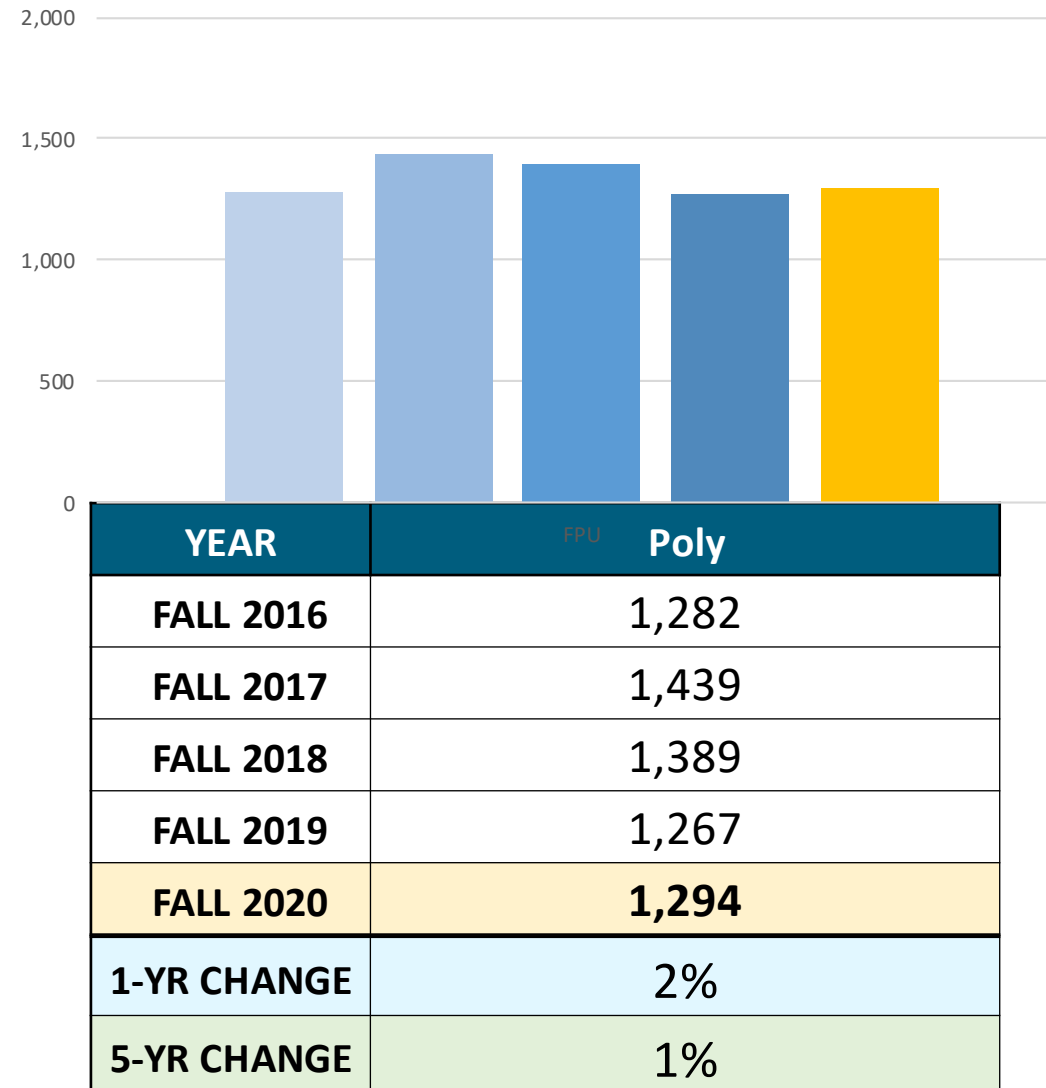
	FAMU	FAU	FGCU	FIU	FPOLY	FSU	UCF	UF	UNF	USF	UWF
FALL 2016	29	9	20	10	33	20	11	20	18	21	13
FALL 2017	30	10	23	11	35	24	12	22	20	21	15
FALL 2018	29	12	23	12	27	25	13	27	22	20	16
FALL 2019	27	15	24	12	32	27	12	28	24	20	17
FALL 2020	28	13	22	13	27	28	14	29	25	21	16
1-YR CHANGE	1	-2	-2	1	-5	1	2	1	1	1	-1
5-YR CHANGE	-1	4	2	3	-6	8	3	9	7	0	3
FALL 2020 GOAL	30	15	25	14	32	27	15	29	26	21	17

# Undergraduate Enrollment: Trends



YEAR	FAMU	FAU	FGCU	FIU	FSU	UCF	UF	UNF	USF	UWF
FALL 2016	7,364	24,225	13,544	41,111	32,628	55,253	35,518	13,597	36,373	9,644
FALL 2017	7,554	23,766	13,582	41,852	32,718	56,424	36,436	13,987	36,955	9,549
FALL 2018	7,724	23,238	13,624	41,796	32,316	58,402	37,527	14,256	37,235	9,355
FALL 2019	7,494	23,424	13,426	41,794	32,909	58,962	37,872	14,419	37,284	9,192
FALL 2020	7,082	24,379	13,491	41,160	32,463	61,115	38,233	14,310	37,010	9,172
1-YR CHANGE	-5%	4%	0%	-2%	-1%	4%	1%	-1%	-1%	0%
5-YR CHANGE	-4%	1%	0%	0%	-1%	11%	8%	5%	2%	-5%


# Poly Undergraduate Enrollment



# Undergraduate Enrollment: Takeaways

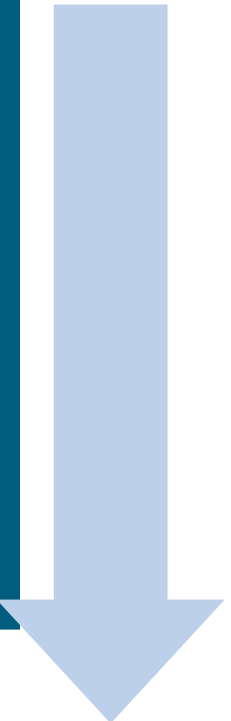


## Increasing Enrollment



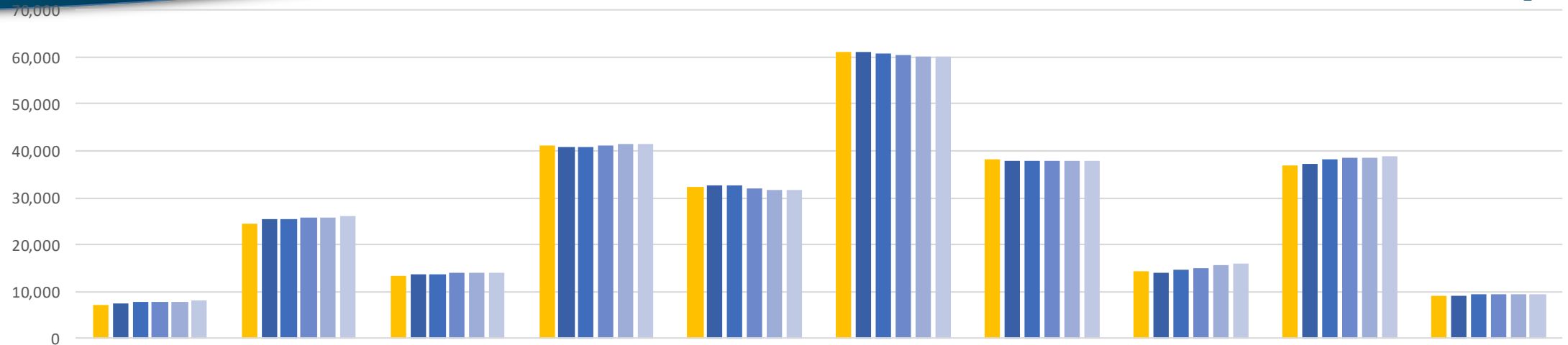
	5-yr % Trend	Subgroup Trends
UCF	11%	+26% FTIC +14% RETURN +27% TRANSFER OTHER
UF	8%	+3% RETURN +13% TRANSFER
UNF	5%	+38% FTIC +30% RETURN -29% TRANSFER

## Decreasing Enrollment



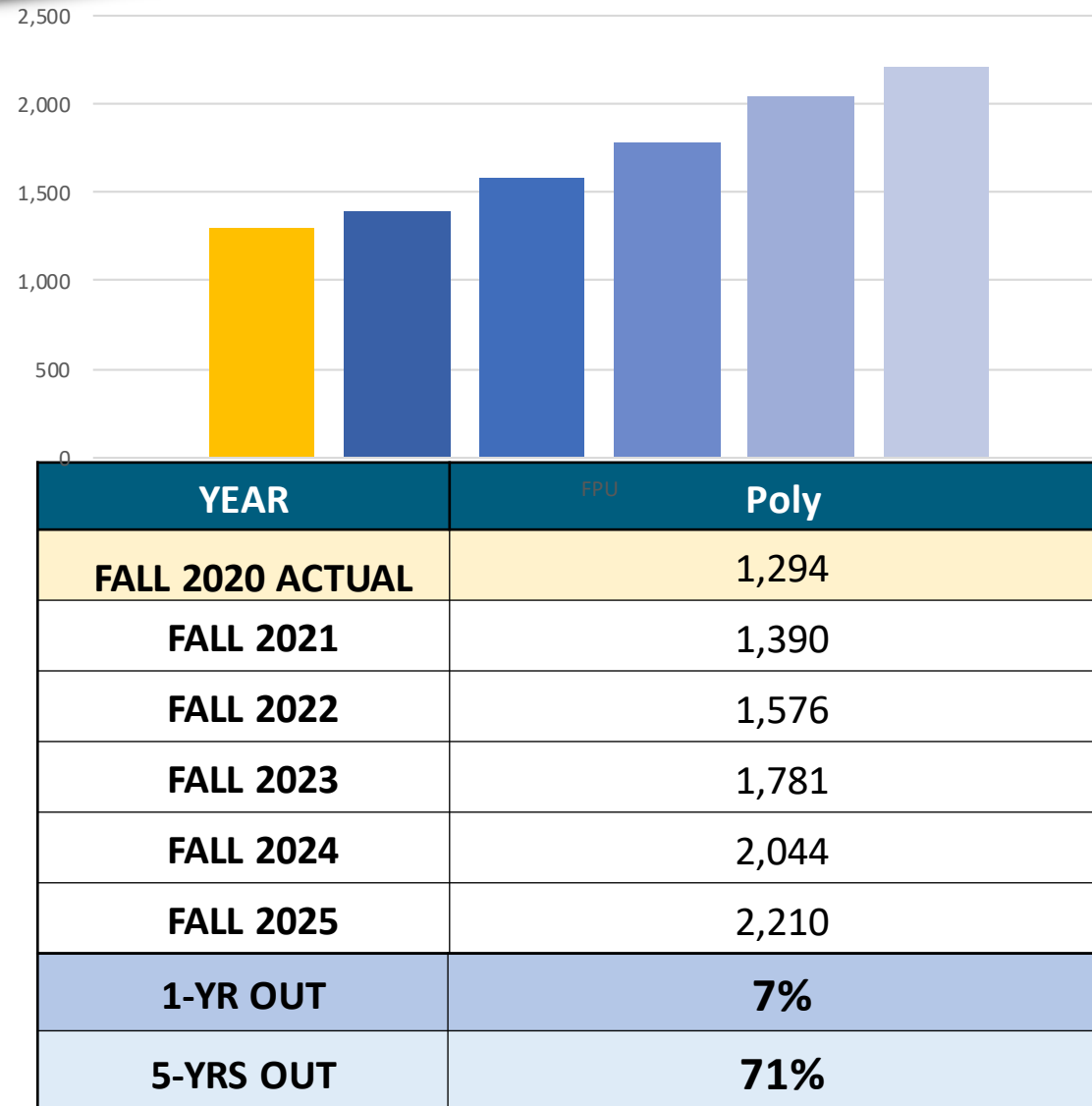
	5-yr % Trend	Subgroup Trends
UWF	-5%	-4% FTIC -9% RETURN -5% TRANSFER
FAMU	-4%	-17% FTIC +1% RETURN +18% TRANSFER

# Undergraduate Enrollment: Goals



YEAR	FAMU	FAU	FGCU	FIU	FSU	UCF	UF	UNF	USF	UWF
FALL 2020 ACTUAL	7,082	24,379	13,491	41,160	32,463	61,115	38,233	14,310	37,010	9,172
FALL 2021	7,420	25,310	13,553	40,991	32,718	56,424	36,436	13,987	36,955	9,549
FALL 2022	7,640	25,484	13,690	40,882	32,316	58,402	37,527	14,256	37,235	9,355
FALL 2023	7,755	25,660	13,826	41,017	32,909	58,962	37,872	14,419	37,284	9,192
FALL 2024	7,885	25,838	13,965	41,331	32,463	61,115	38,233	14,310	37,010	9,172
FALL 2025	8,060	26,017	14,004	41,592	31,600	60,000	38,000	15,940	38,798	9,350
1-YR OUT	5%	4%	0%	0%	0%	0%	-1%	-2%	1%	0%
5-YRS OUT	14%	7%	4%	1%	-3%	-2%	-1%	11%	5%	2%

# Poly Undergraduate Goals







[www.flbog.edu](http://www.flbog.edu)