



# Performance-Based Funding 2021-22

**Budget & Finance Committee**  
**Brian Lamb, Chair**

**June 22, 2021**  
**[www.flbog.edu](http://www.flbog.edu)**

# Performance Funding – A Look Back



- 2012 – Chair Colson charged the Budget & Finance Committee with creating a performance-based funding model
- January 2014 – Board approved a model
- 2016, Section 1001.92, F.S. created in House Bill 7029 (Ch. 2016-237, L.O.F.). Board Regulation 5.001 created
- FY 2021-22: \$560 M Total PBF Appropriation (\$265 M State Investment, \$295 M Institutional Investment)

# Performance Funding Appropriations

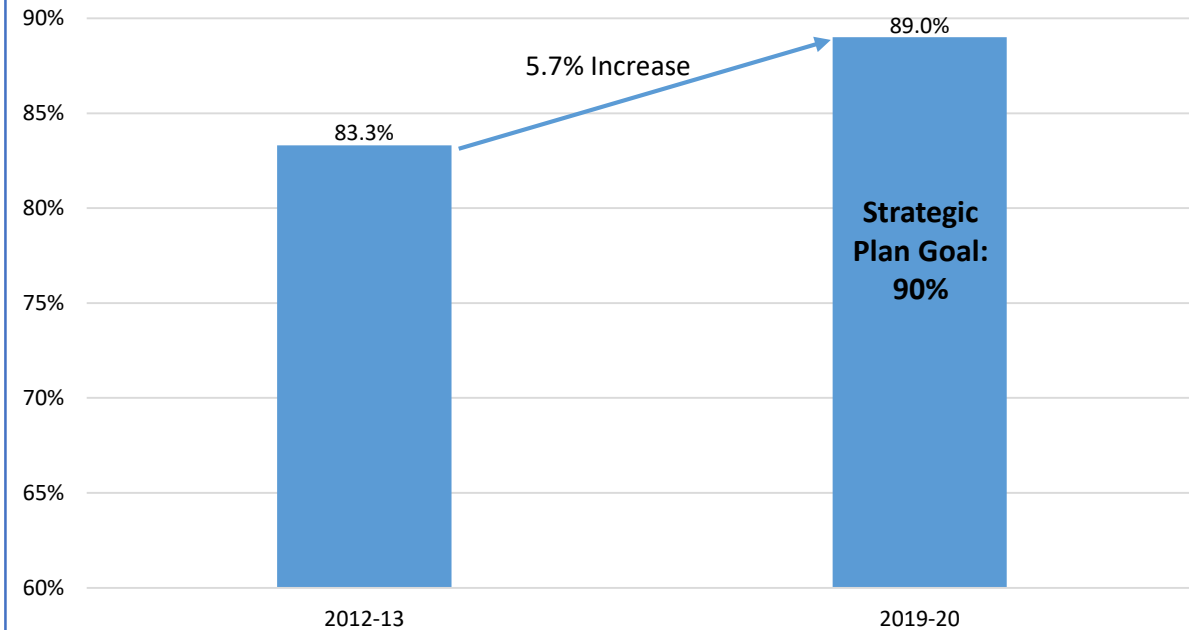


	<b>State Investment</b>	<b>Institutional Investment</b>	<b>Total</b>
<b>2014-2015</b>	\$100 M	\$65 M	\$165 M
<b>2015-2016</b>	\$150 M	\$250 M	\$400 M
<b>2016-2017</b>	\$225 M	\$275 M	\$500 M
<b>2017-2018</b>	\$245 M	\$275 M	\$520 M
<b>2018-2019</b>	\$265 M	\$295 M	\$560 M
<b>2019-2020</b>	\$265 M	\$295 M	\$560 M
<b>2020-2021</b>	\$265 M	\$295 M	\$560 M
<b>2021-2022</b>	\$265 M	\$295 M	\$560 M

# Performance Funding Improvement Retention and Graduation Rates



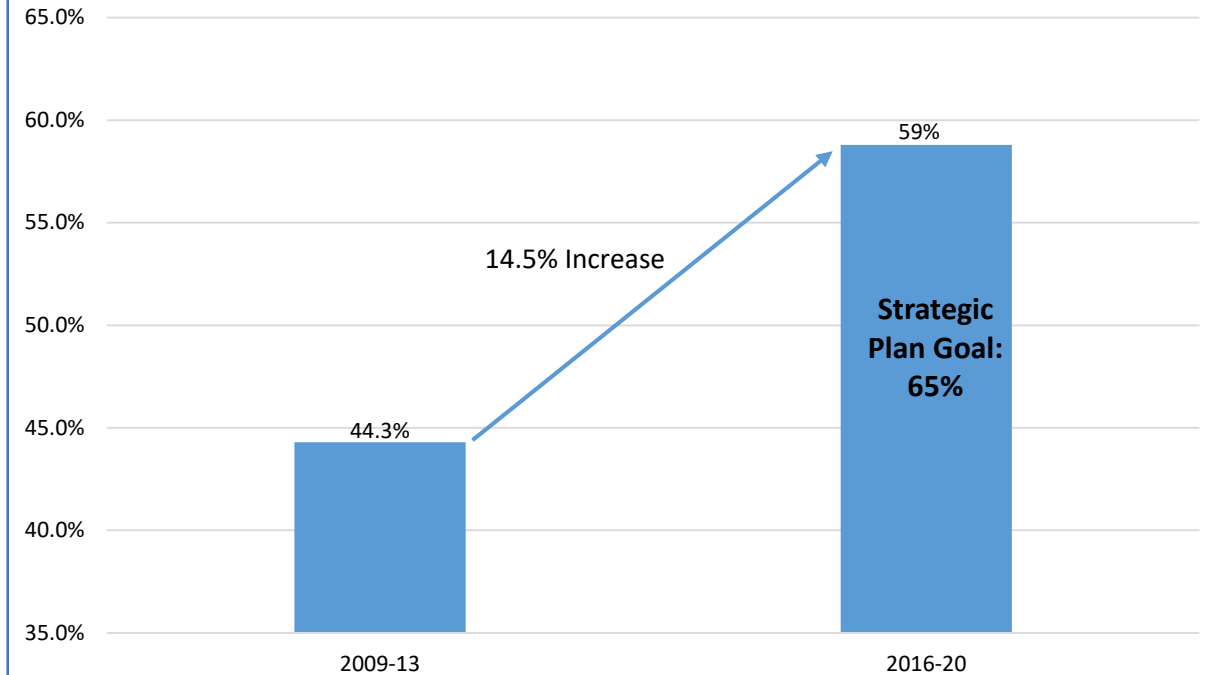
**Metric 5: Academic Progress Rate  
2nd Year Retention w/ GPA above 2.0**



In the last year, statewide retention rates increased by 2%. Notable improvements:

- FAMU: 9% increase (from 73% to 82%)
- FL Poly: 12% increase (from 65% to 77%)

**Metric 4: 4 Year Grad Rate**



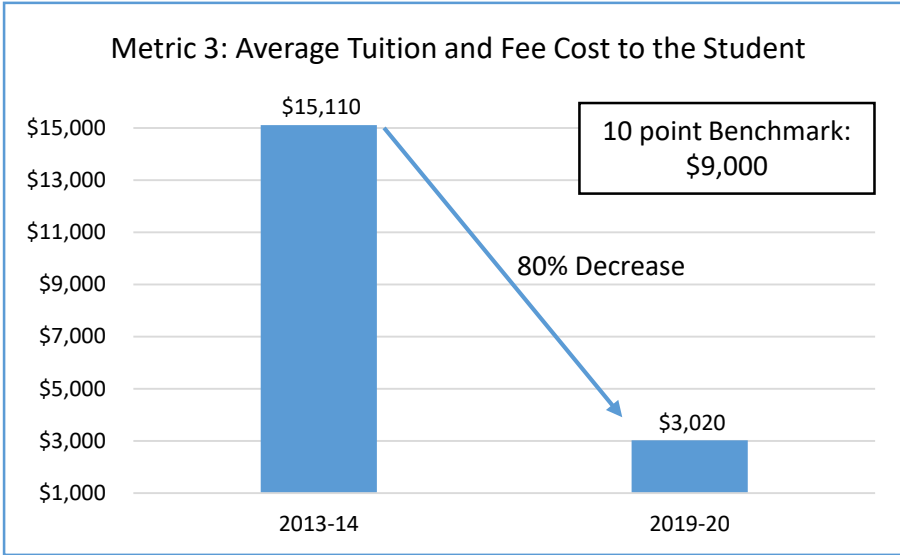
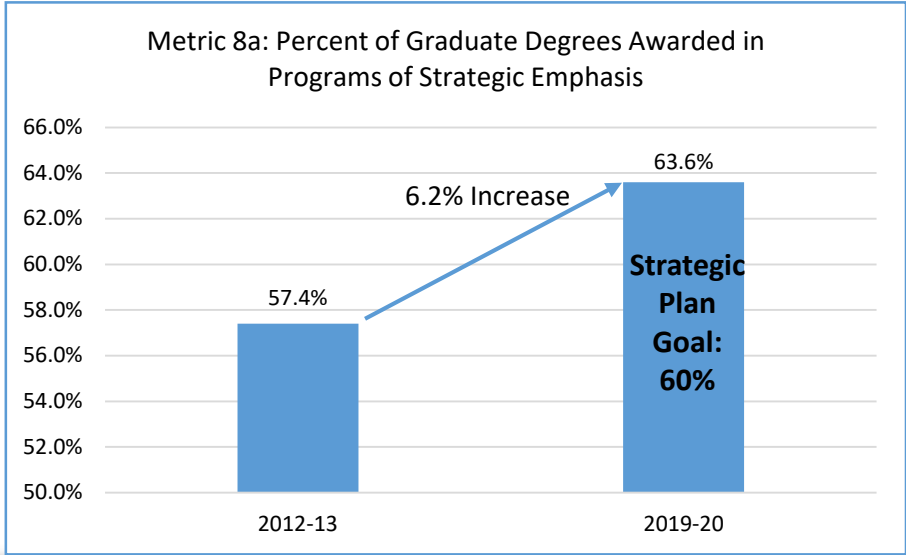
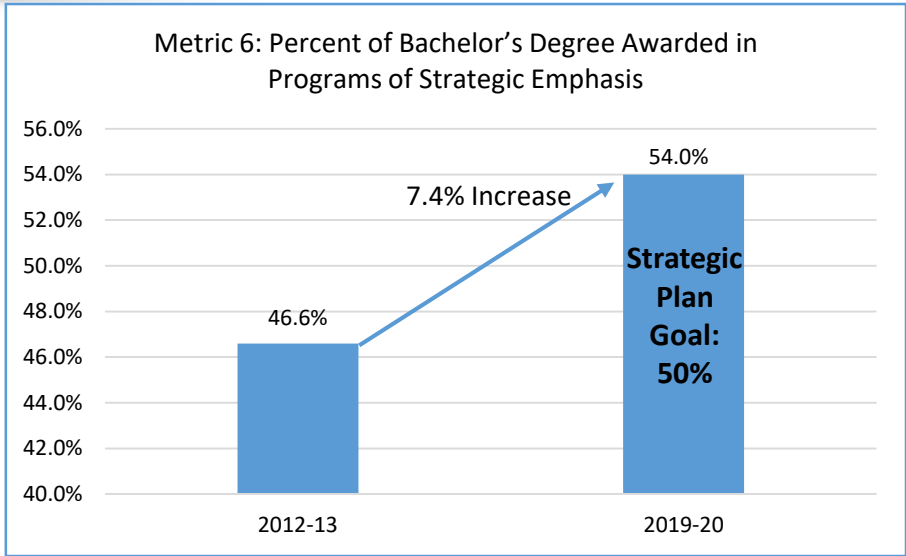
In the last year, statewide graduation rates increased by 4%. Notable improvements:

- FAMU: 7% increase (from 28% to 35%)
- FAU: 11% increase (from 37% to 48%)
- FIU: 6% increase (from 43% to 49%)

# Performance Funding Improvement Degrees and Cost to the Student



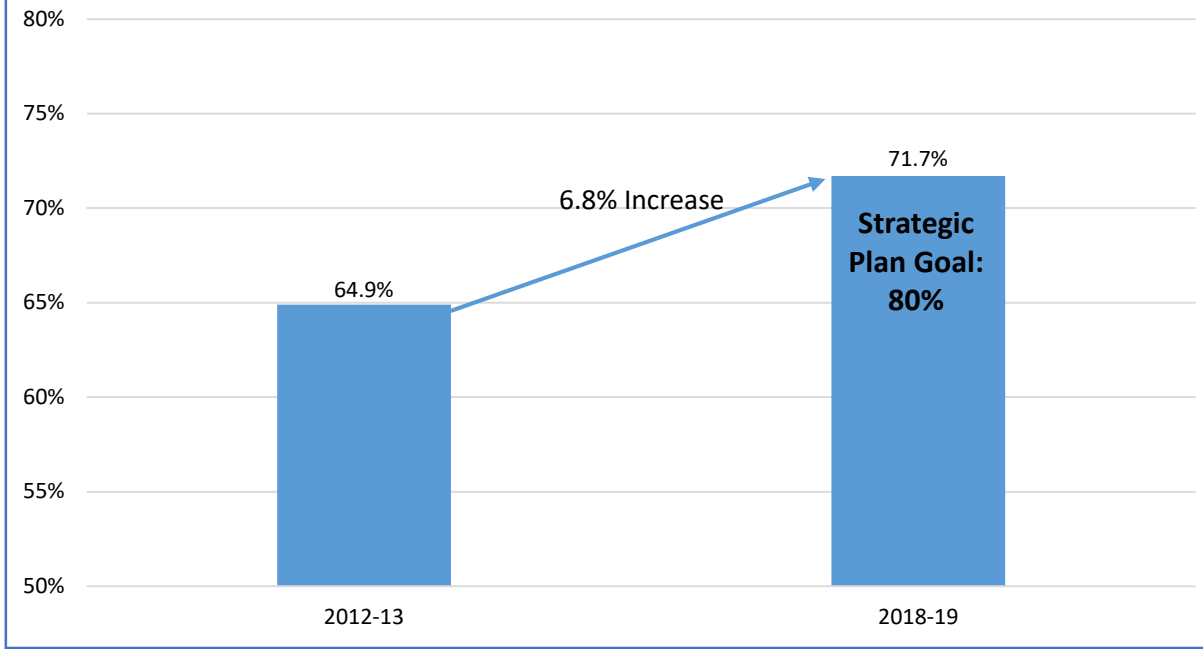
All of the SUS Averages for these metrics are exceeding the Strategic Plan Goals and/or 10-point Benchmarks.



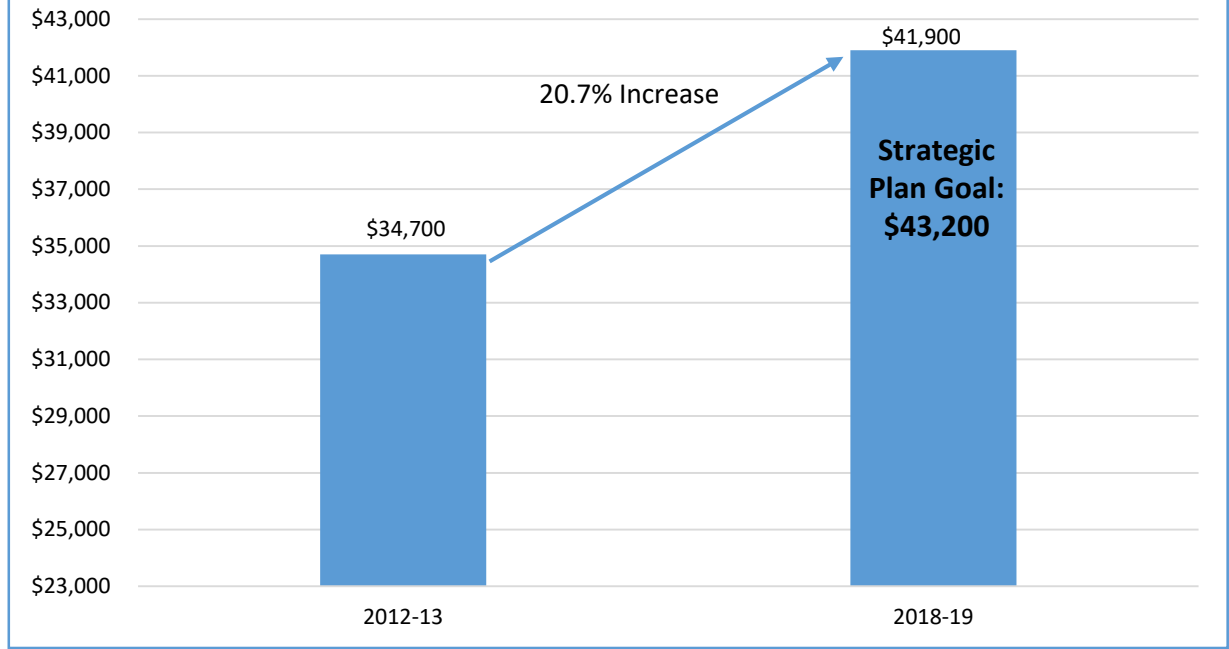
# Performance Funding Improvement Employment after Graduation



**Metric 1: Percent of Bachelor's Graduates Enrolled or Employed**



**Metric 2: Median Wages of Bachelor's Graduates Employed Full Time**



# Performance Funding Model 2021-22

## Metric 9a and 9b Data



### Benchmarks:

	<i>Excellence Points:</i>	5	4	3	2	1
Metric 9a: Two-Year Graduation Rate for FCS Associate in Arts Transfer Students		50%	45%	40%	35%	30%
Metric 9b: Six-Year Graduation Rate for Students Awarded a Pell Grant in their First Year		80%	75%	70%	65%	60%
Metric 9b1: Academic Progress Rate, 2 <sup>nd</sup> Year Retention for FTIC with a Pell Grant (FL Poly only)		89%	88%	87%	86%	85%
	<i>Improvement Points:</i>	5	4	3	2	1
	<i>% Improvement:</i>	5%	4%	3%	2%	1%

### Data:

	FAMU	FAU	FGCU	FIU	FL Poly	FSU	NCF	UCF	UF	UNF	USF	UWF
<i>Metric 9a</i>												
2018-20	36.4	46.2	41.9	54.9	4.2	56.0	25.0	32.2	38.5	46.3	47.7	36.8
% Change	1.8	4.4	-0.8	9.3	-1.7	-0.1	-4.3	-0.8	-4.0	3.1	6.3	5.8
<i>Metric 9b &amp; 9b1 (FL Poly only)</i>												
2014-20*	53.3	55.3	50.1	63.8	87.8	80.0	60.6	71.3	85.2	56.5	71.5	45.0
% Change	1.8	4.2	3.5	3.5	20.1	-0.6	-1.5	2.0	-0.5	-3.1	0.8	5.8

\*2019-20 for Metric 9b1 (FL Poly only)

# Performance Funding Model 2021-22

## Metric 9a and 9b Scores



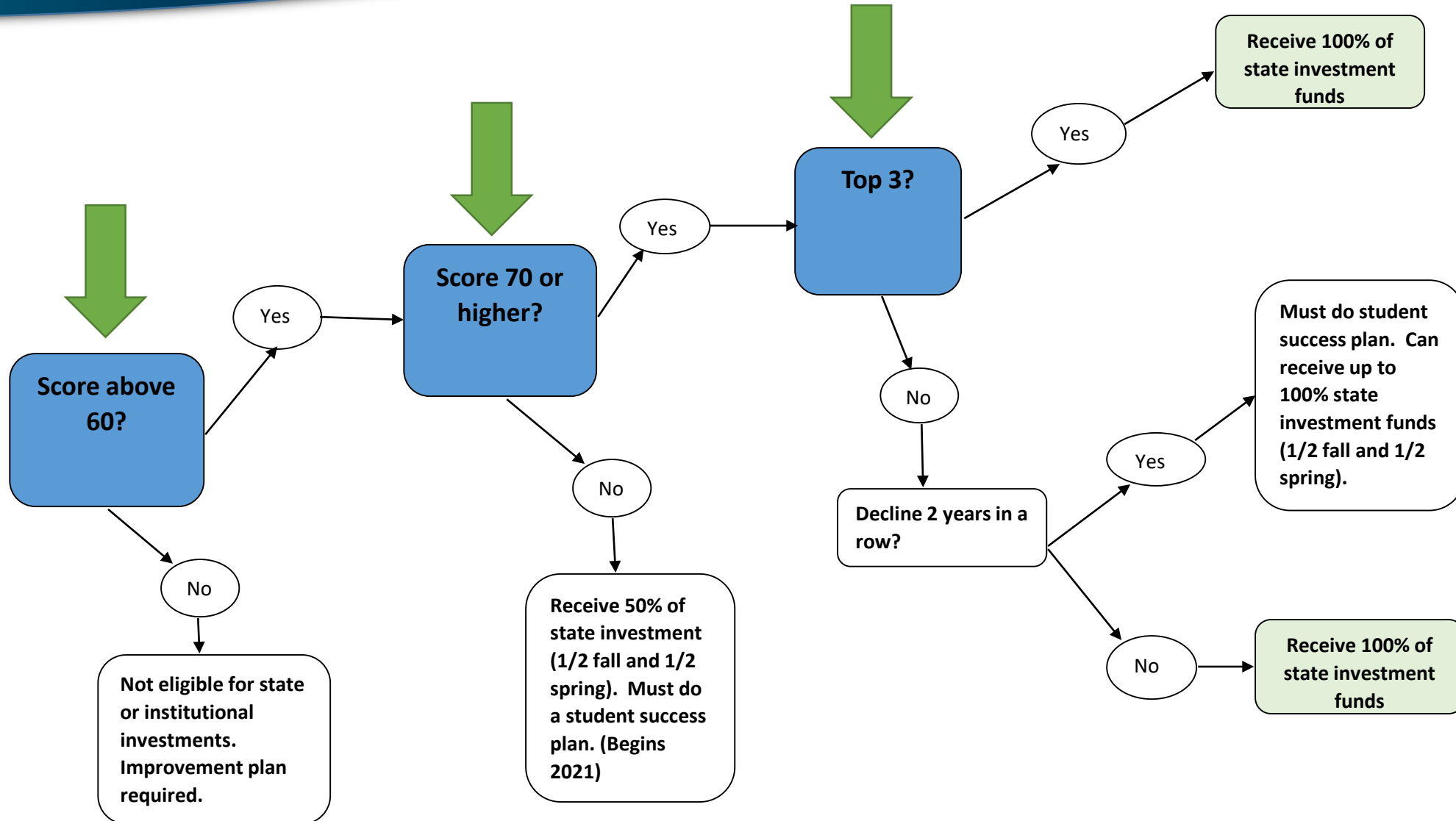
- Metric 9a: Two-Year Graduation Rate for FCS Associate in Arts Transfer Students
- Metric 9b: Six-Year Graduation Rate for Students who are Awarded a Pell Grant in their First Year
- Metric 9b1: Academic Progress Rate, 2<sup>nd</sup> Year Retention for FTIC with a Pell Grant (FL Poly only)

Univ.	Former Metric 9 2021*	Metric 9a 2021	Metric 9b & 9b1 2021	Metric 9 Total 2021	Over/Under Former Metric 9
FAMU	6	2	1	3	-3
FAU	10	4	4	8	-2
FGCU	9	3	3	6	-3
FIU	10	5	3	8	-2
FL Poly	n/a	0	5	5	n/a
FSU	10	5	5	10	-
NCF	10	0	1	1	-9
UCF	9	1	3	4	-5
UF	10	2	5	7	-3
UNF	10	4	0	4	-6
USF	10	5	3	8	-2
UWF	10	5	5	10	-

\*Using current year data to score former Metric 9, Percent of Baccalaureate Degrees Awarded without Excess Hours. Nine universities lost points.



# Performance Funding Overview



# 2021-22 Performance Funding Allocation



	2020 Scores	2021 Scores	Allocation of State Investment	Allocation of Institutional Investment	Total Performance-Based Funding Allocation
FAMU	73	79	\$12,651,647	\$14,083,909	\$26,735,556
★ FAU	85	89	\$20,392,761	\$22,701,375	\$43,094,136
→ FGCU	88	82	\$11,469,477	\$12,767,908	\$24,237,385
★ FIU	88	97	\$31,947,249	\$35,563,918	\$67,511,167
FL Poly		83	\$4,295,463	\$4,781,742	\$9,077,205
FSU	85	88	\$41,028,117	\$45,672,810	\$86,700,927
→ NCF	87	64	\$3,643,257	\$4,055,702	\$7,698,959
UCF	89	87	\$32,898,338	\$36,622,678	\$69,521,016
UF	90	87	\$50,191,372	\$55,873,414	\$106,064,786
UNF	83	77	\$12,903,434	\$14,364,201	\$27,267,635
★ USF	94	94	\$34,549,019	\$38,460,229	\$73,009,248
✓ UWF	82	83	\$9,029,866	\$10,052,115	\$19,081,981
<b>Total</b>			<b>\$265,000,000</b>	<b>\$295,000,000</b>	<b>\$560,000,000</b>

Scores will be normalized for Metric 9 changes.

## ★ Top 3: FAU, FIU, USF

Top 3 (including ties) receive 100% of their allocation of state investment.

## ✓ 2020 Watch List: FAU, UWF

All universities on the 2020 watch list have increased their score in 2021.

## → 2021 Watch List: FGCU, NCF

If a university's score decreases for 2 consecutive years, the university may receive up to 100% of their allocation of the state investment after presenting/completing a student success plan. Universities on the watch list have a drop in score for 1 year.

# 2021-22 Performance Funding Scores



Scores are normalized for Metric 9 changes:

Univ.	2020 Score	2021 Score	+/- Score	Metric 9a and 9b add back	Normalized Score*	Score Drop/ Increase
FAMU	73	79	+6	3	82	increase
FAU	85	89	+4	2	91	increase
FGCU	88	82	-6	3	85	drop
FIU	88	97	+9	2	99	increase
FSU	85	88	+3	-	88	increase
NCF	87	64	-23	9	73	drop
UCF	89	87	-2	5	92	increase
UF	90	87	-3	3	90	same score
UNF	83	77	-6	6	83	same score
USF	94	94	-	2	96	increase
UWF	82	83	+1	-	83	increase

By adding back lost points in Metric 9, no university's decline in score will be impacted by the Metric 9 changes.

# Performance Funding Model 2021-22

## Florida International University



**The highest score ever achieved  
in Performance Funding history.**

### 6 Year Score History

Year	Score
2021-22	97
2020-21	88
2019-20	87
2018-19	90
2017-18	68
2016-17	76

### Perfect score in 9 Metrics

Metric	Points
#2 – Median Wages of Bachelor’s Graduates Employed Full-time One Year After Graduation	10
#3 – Average Cost to the Student [Net Tuition per 120 Credit Hours]	10
#4 – Four-Year Graduation Rate for First-time-in-College (FTIC) Students [Full-time students]	10
#5 – Academic Progress Rate (2 <sup>nd</sup> Year Retention w/ GPA Above 2.0)	10
#6 – Bachelor’s Degrees Awarded in Areas of Strategic Emphasis	10
#7 – University Access Rate (Percent of Undergraduates with a Pell Grant)	10
#8 – Graduate Degrees Awarded in Areas of Strategic Emphasis (includes STEM)	10
#9A – Two-Year Graduation Rate for FCS Associate in Arts Transfer Students ( <i>out of 5 points</i> )	5
#10 – Number of Post Doctoral Appointees	10

# Performance Funding Model 2021-22

## Florida Polytechnic University



**Florida Poly's first year in the Performance Funding Model.**

**2021-22 Score:**

**83**

### Perfect score in 8 Metrics

Metric	Points
#1 – Percent of Bachelor's Graduates Employed (\$25,000) and/or Continuing their Education 1 Year After Graduation	10
#2 – Median Wages of Bachelor's Graduates Employed Full-time One Year after Graduation	10
#3 – Average Cost to the Student [Net Tuition per 120 Credit Hours]	10
#5 – Academic Progress Rate (2 <sup>nd</sup> Year Retention w/ GPA Above 2.0)	10
#6 – Bachelor's Degrees Awarded in Areas of Strategic Emphasis	10
#8B – Freshmen in Top 10% of Graduating High School Class	10
#9B1 – Academic Progress Rate, 2 <sup>nd</sup> Year Retention for FTIC with a Pell Grant ( <i>out of 5 points</i> )	5
#10 – Percent of Baccalaureate Graduates Completing 2+ Types of High-Impact Practices	10

# 2021-22 Performance Funding Allocation



	2020 Scores	2021 Scores	Allocation of State Investment	Allocation of Institutional Investment	Total Performance- Based Funding Allocation
FAMU	73	79	\$12,651,647	\$14,083,909	\$26,735,556
FAU	85	89	\$20,392,761	\$22,701,375	\$43,094,136
FGCU	88	82	\$11,469,477	\$12,767,908	\$24,237,385
FIU	88	97	\$31,947,249	\$35,563,918	\$67,511,167
FL Poly		83	\$4,295,463	\$4,781,742	\$9,077,205
FSU	85	88	\$41,028,117	\$45,672,810	\$86,700,927
NCF	87	64	\$3,643,257	\$4,055,702	\$7,698,959
UCF	89	87	\$32,898,338	\$36,622,678	\$69,521,016
UF	90	87	\$50,191,372	\$55,873,414	\$106,064,786
UNF	83	77	\$12,903,434	\$14,364,201	\$27,267,635
USF	94	94	\$34,549,019	\$38,460,229	\$73,009,248
UWF	82	83	\$9,029,866	\$10,052,115	\$19,081,981
<b>Total</b>			<b>\$265,000,000</b>	<b>\$295,000,000</b>	<b>\$560,000,000</b>



- Metric 1 – Percent of Bachelors Graduates Employed (earning \$25,000+) or Enrolled One Year after Graduation
  - The new 2025 Strategic Plan Goal for this metric increases the wage threshold to \$30,000 and sets the goal to 80%. Should the PBF metric match the new 2025 Strategic Plan Goal?
- Metric 4 – Four-Year Graduation Rate (Full-time FTIC)
  - The new 2025 Strategic Plan Goal for this metric is 65%. Should the PBF metric match the new 2025 Strategic Plan Goal?
- Metric 10 – Board of Trustees Choice
  - The university Boards have been asked to evaluate their current Metric 10 and request changes.



[www.flbog.edu](http://www.flbog.edu)