

FLORIDA INTERNATIONAL UNIVERSITY

# Graham University Center Expansion



# The Graham University Center

- Established in 1974, the Graham University Center is the unifying center of campus as it brings together academic, social, and retail enterprises important to student success.
- Viewed as the “living room” of the university due to its attractive and welcoming environment and vibrant student life, Graham University Center attracts almost 3.6 million students and visitors each year.
- From the first point of contact at student orientations to engaging in a vibrant student life at FIU, the Graham Center plays an integral role in the educational mission of FIU by serving as the “home away from home” for the FIU community.

# Why is the Graham Center Expansion Needed?

- Since the Graham Center's last expansion in 2006, the FIU student population at MMC has grown from approximately 30,000 to 40,000 fall 2016, a 33 percent increase.
- Current facilities cannot accommodate the increase in the number of students, student groups, clubs, departments and special events.
- Critical events such as Career Fairs and Student Orientations are currently being capped due to lack of space.



# Student Life at Graham Center





# Student Life at Graham Center





# Career Fair

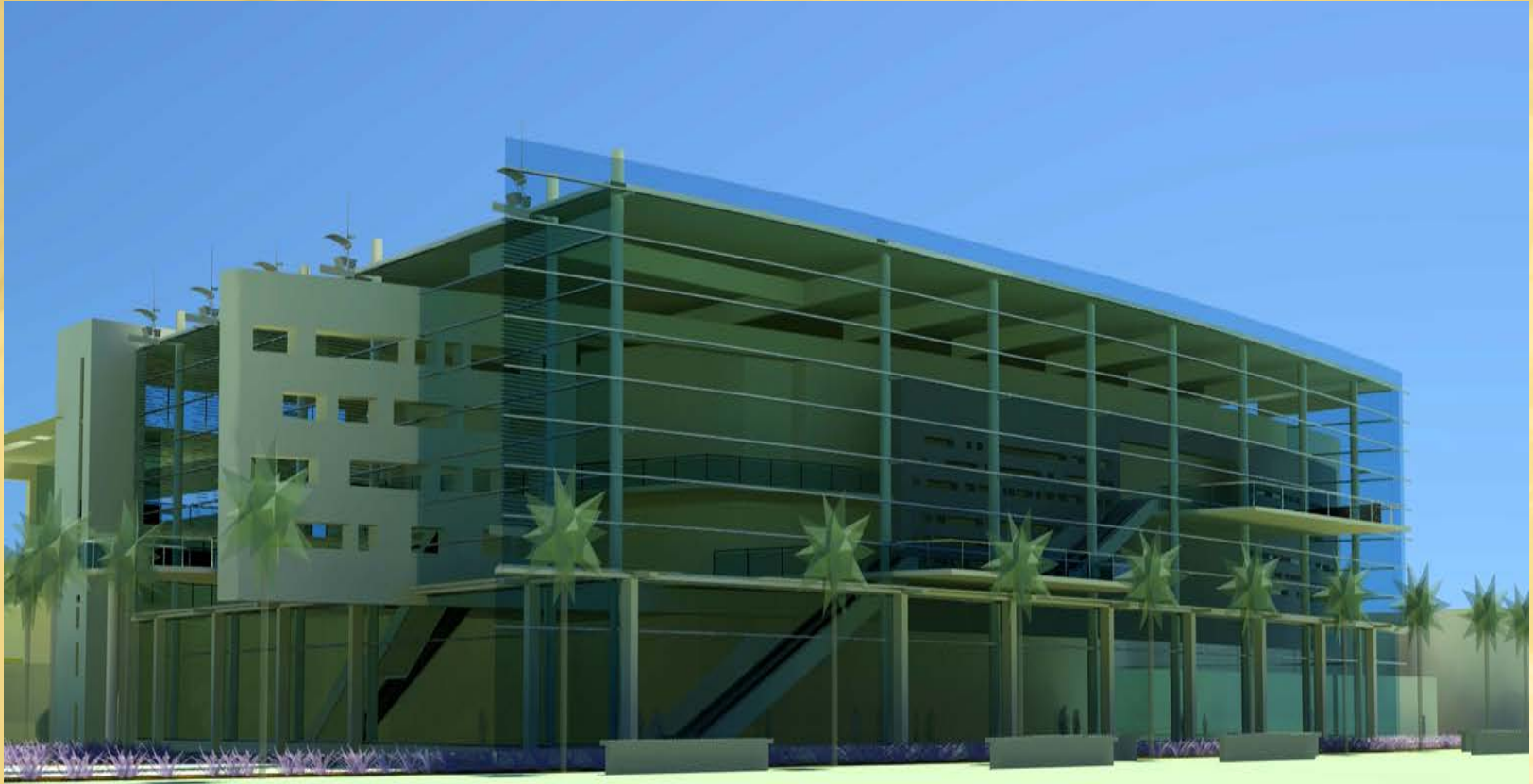


Fall 2016 Career Fair hosted 166 employers over two days. Numerous employers were turned away due to lack of space.

# Expansion Proposal

- Project Cost: \$24 million
- Project Details:
  - Project Size: 46,000 Gross Square Feet
  - Project Completion: 2020
  - Features
    - Ballroom (sub-dividable)
    - Four large meeting rooms
    - Five breakout rooms
    - Panther “Changemaker” Engagement Center
    - Tutoring and study space
    - Back-of-house/storage space
    - Two student lounges

# Expansion Facility Rendering





# How Will FIU Students Benefit?

Student retention, graduation rates, employment, and affinity enhanced by:

- Event spaces for student programming needs, such as lectures, seminars, recognition events, entertainment, town hall meetings, and student leadership conferences.
- Event spaces for career fairs, student orientations, student convocations, and conferences.
- Student study lounges and collaboration areas.
- Student tutoring and study spaces.
- Panther “Changemaker” Center will facilitate innovative solutions for global challenges, making a difference through service, social justice, and leading social change in local and global communities.