

# Strategic FIU Expansion Modesto A. Maidique Campus



Current



Vision

# Why is the FIU Expansion Needed?

- To meet the needs of the ever-growing South Florida community, FIU is looking at ways to expand its physical space and grow strategically.
- FIU's main campus is the second smallest in size and has the highest FTE and Headcount per acre.

Institution	Acres	Headcount/Acre	FTE/Acre
FIU	342	104	59
UF	2050	24	13
UWF	1666	7	4
USF	1493	24	16
UCF	1415	42	22
UNF	1170	14	8
FGCU	765	18	11
FAU	746	41	20
FSU	447	92	59
FAMU	423	29	18
NCF	119	7	6

- FIU has the highest space utilization rate in the SUS, achieving 160 percent of statutory requirements; has the largest percentage of classes with 30+ students; the smallest percentage of classes with less than 30 students; and has the second highest percentage of classes with 100+ students.

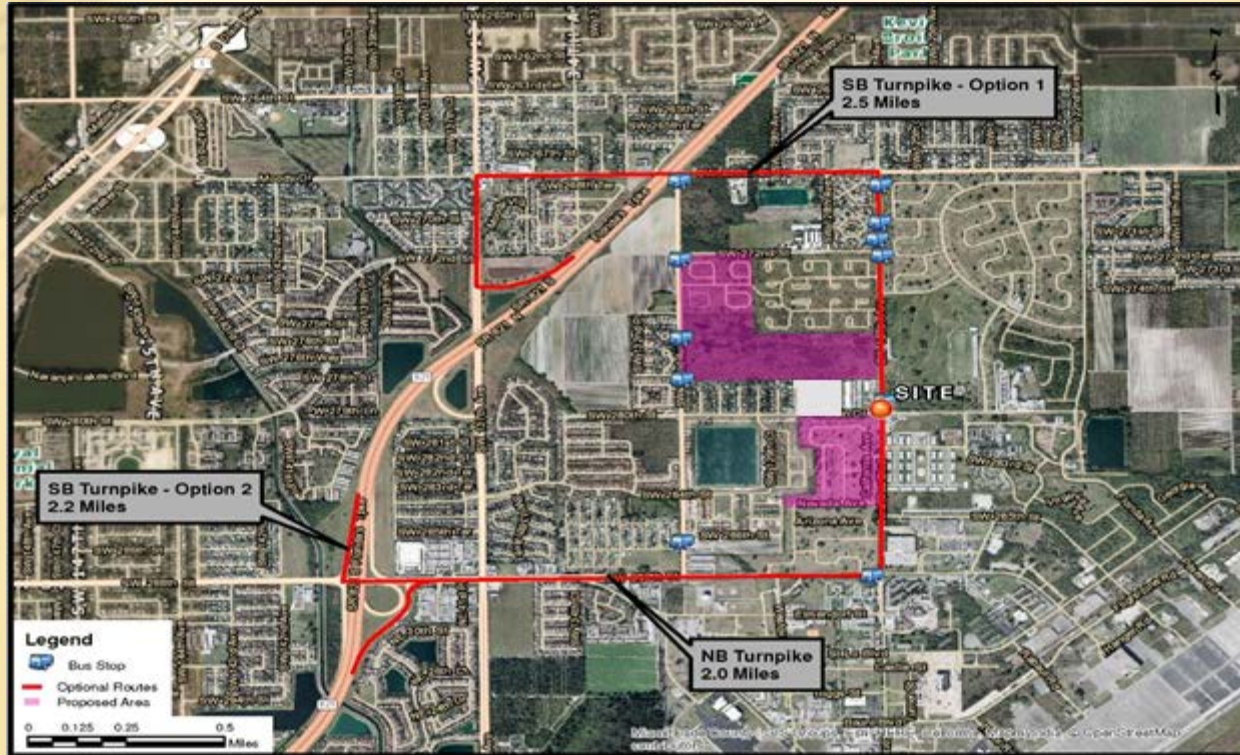
# How Will the Funds Be Used?

- FIU, Miami-Dade County, and the Fair have been working together since 2010 to develop FIU's expansion and Fair relocation plans.
- Total expansion cost of \$50 million will be used for relocation and replacement costs of the Fair, land acquisition and improvements.
- 64 acres located contiguous to campus, currently used by the Miami-Dade County Fair and Expo, will become part of FIU's campus (342+64= 406 acres).
- \$10 million was appropriated in 2014-15; \$40 million remaining.
- On September 3, 2014, the Miami-Dade County Commission approved a framework for FIU acquisition of the site as well as a resolution for voter approval of the acquisition.
- On the November 4, 2014 general election, Miami-Dade County voters overwhelmingly approved FIU's expansion onto the County land currently leased by the Fair; 65% of 500,000 voters in favor.
- Over 30 possible sites have been reviewed and a South Dade Site has been selected as the replacement site.

# Selected South Dade Site

- Project location, site improvements and building improvements have been quantified for a total project cost of \$50 million.
- Approximately 127 acres will be provided by Miami-Dade County.
- Site development costs (site work, parcel assembly, utilities, paving and parking) estimated at \$30 million.
- Fair relocation replacement costs of \$20 million for exhibition space, operations, maintenance and offices.
- Local support – The Cities of Homestead, Florida City and Cutler Bay have unanimously adopted resolutions in support of this collective effort. In addition, the City of Doral and City of Sweetwater, the two cities in closest proximity to FIU, have endorsed the plan.

# Selected South Dade Site



# Rendering of New Fairgrounds



# What is the Vision for the Acquired Land?

- **ACADEMIC AND RESEARCH SPACE**
  - Engineering Center expansion
  - Classrooms; teaching, research and technology labs; faculty and staff offices
  - Emphasis on facilities that support and expand programs in science, technology, engineering and mathematics (STEM)
  - Expansion of research capacity for Medicine, Nursing, Public Health and Social Work
- **INCUBATOR, ENTREPRENEURSHIP AND DATA CENTER**
  - Innovation and entrepreneurship space to focus on community economic development
  - University research incubator
  - Data center to support university research and teaching technology
- **LOWER DIVISION STUDENT HOUSING FACILITIES**
  - 2,000 additional beds with meeting rooms and study space
- **SUPPORT SPACE**
  - Exercise, health, wellness, and recreational facilities for students
  - Food service facilities, student services, and pedestrian pathways and green space

# Rendering--Engineering Center on FIU Expansion Site

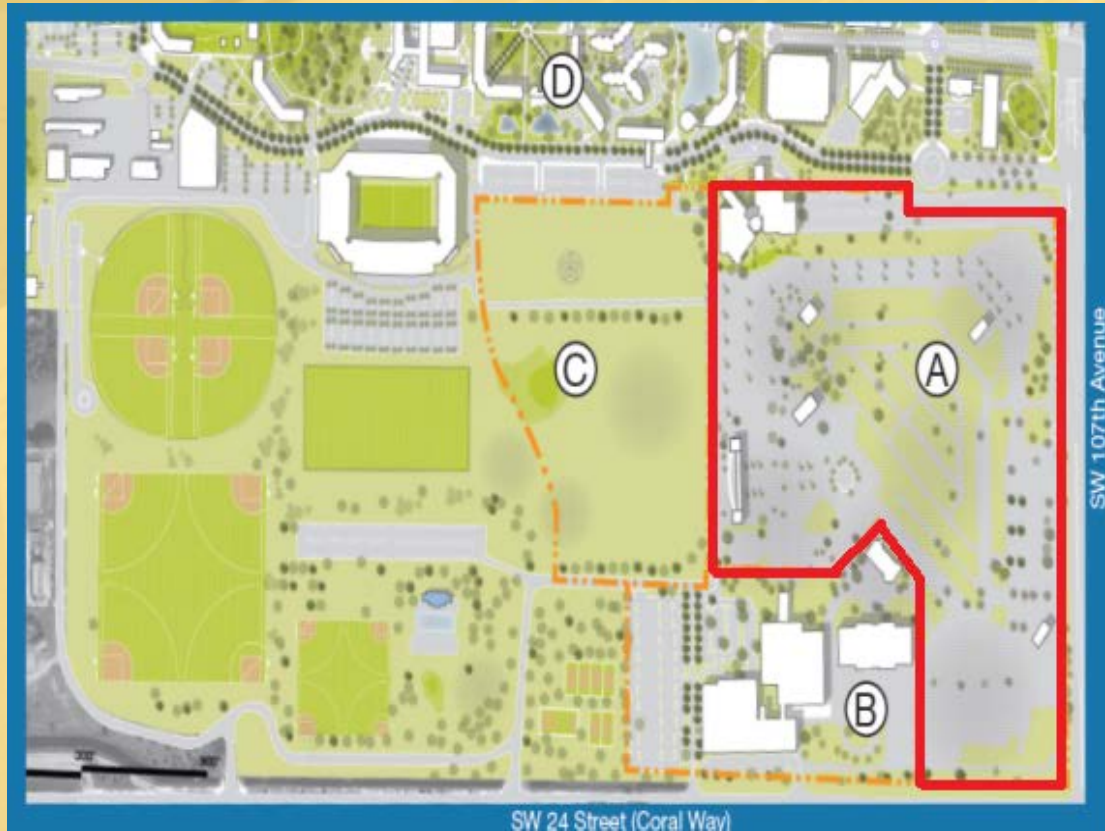




# How Will Students and the Community Benefit?

- Increase bachelors and graduate degrees in STEM – increase new graduates from the College of Engineering from 1150 to 1500 each year: 350 additional engineers annually, 550 new jobs in South Florida and \$78 million infusion into the economy.
- Increase number of STEM graduates employed in Florida.
- Improve student retention and graduate rates through expanded industry partnerships and internships.
- Increase research expenditures and jobs.
- Increase patents, licenses and start-up companies.
- Total economic impact estimated at over \$541 million annually.
- More classroom space.

# FIU Expansion Site Plan/Map



Current Tamiami Park  
and fairgrounds map

A. 64 acres currently  
occupied by the Fair

B. 22 acres remaining  
with the county or Fair/  
park for exposition  
space

C. 26 acres of  
undeveloped land  
adjacent to the  
Fair site (now used  
for parking) would  
become available for  
park development

D. 342 acres current  
FIU campus (406 acres  
with expansion)