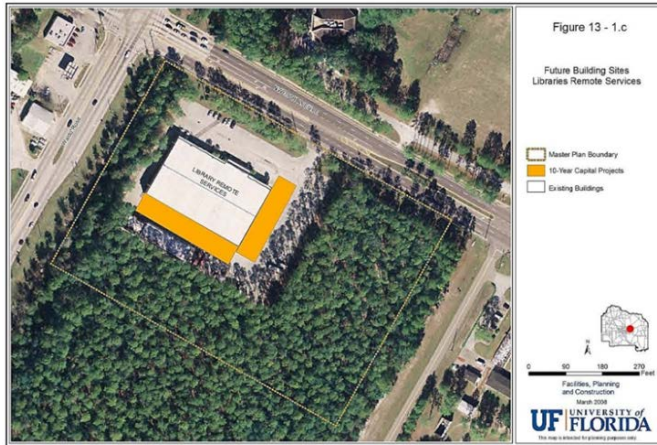




SUS JOINT USE LIBRARY STORAGE FACILITY – MANAGED BY UF

\$28.1m





SUS JOINT USE LIBRARY STORAGE FACILITY – MANAGED BY UF

\$28.1m

RETURN ON INVESTMENT (ROI)

- ✓ This project is a high-density **“Shared Services” facility** which will provide archival storage for 5.2M volumes of library materials for benefit of **all** state universities (12) and state colleges (28).
- ✓ This project creates opportunities for removal of **low circulation books** and journals from all SUS libraries while ensuring continued access.
- ✓ Savings are realized because the SUS would need to retain only **one hard copy** of an item to ensure availability to users throughout the SUS and Florida College System.



SUS JOINT USE LIBRARY STORAGE FACILITY – MANAGED BY UF

\$28.1m

RETURN ON INVESTMENT (ROI)

- ✓ Over 5.8 million additional books in SUS campus libraries could be relocated to storage or discarded based on volumes already in storage, allowing an **estimated 230,000 square feet** to be repurposed for **collaboration and study space for over 12,000 students** and other high demand library services.
- ✓ Efficiencies result from operating a single shared storage facility versus multiple individual facilities.



SUS JOINT USE LIBRARY STORAGE FACILITY – MANAGED BY UF

\$28.1m

DEMAND METRICS

- ✓ The **SUS shared collection** is officially created as the **FLorida Academic REpository (FLARE)**. The collection already contains over **2.2 million volumes** that will be moved into the new facility when it opens.
- ✓ Lease for the **Interim Storage Facility (ILF)** has been extended through March 2018. ILF only has capacity for 400,000 to 600,00 additional volumes (2 years growth).
- ✓ Managing relatively low-use, but valuable, print items centrally is consistent with Best Practices regionally and nationally. **FLARE is an active participant in a regional print journal archiving initiative** with the Association of Southeastern Research Libraries (ASERL) to ensure members access to titles retained by other libraries in the Southeast, thus eliminating the need for the SUS to retain every journal.



SUS JOINT USE LIBRARY STORAGE FACILITY – MANAGED BY UF

\$28.1m

CONSTRUCTION DETAILS

- ✓ The Joint-Use Facility consists of 2 parts: 42,000 GSF of renovated space and 40,000 GSF of new space.
- ✓ Originally funded in 2010, **design is complete** through 100% Construction Documents and all internal and external (GRU, SFM) reviews are complete.
- ✓ Anticipated construction start date: **August 2017**.
- ✓ Estimated completion: **18 to 24 months** after construction begins.



SUS JOINT USE LIBRARY STORAGE FACILITY – MANAGED BY UF

\$28.1m

Request

- ✓ Total project budget: \$28.1M

- Prior Funding: 2010-2011 \$2.0M
- Current Request: 2017-2018 18.0M
- Remaining Need: 2018-2019 \$6.7M
- 2019-2020 \$1.4M

- ✓ This project is “Shovel Ready.”



BOARD *of* GOVERNORS

State University System of Florida

www.flbog.edu