

Board of Governors Facilities Workshop

EOAS, IRCB, COLLEGE OF BUSINESS, AND UNION BUILDINGS

OCTOBER 18, 2016 ■ PRESIDENT JOHN THRASHER

Earth, Ocean and Atmospheric Science Building

\$29 Million



Proposed Site



Sitework Begins



North Elevation

Earth, Ocean and Atmospheric Science Building

\$29 Million

Demand Metrics

- Increase the # of STEM degrees and increase external funding
- Merged 3 departments to save money, provide innovation in teaching, and increase research potential
- The # of undergraduate majors in EOAS has increased by 52% since 2010, making it the fastest growing program in Arts and Sciences
- Contributes to the success of over 35,000 additional degrees over the projected life of the building
- Huge research opportunities - \$12 million in annual external funding, expected to at least double
 - Geophysical Fluid Dynamics Lab
 - Center for Oceanic-Atmospheric Prediction Studies

Earth, Ocean and Atmospheric Science Building

\$29 Million

ROI

- Over \$12 million annually awarded in contracts and grants – expect to grow significantly with growth in faculty
- Graduated 158 students last year which will result in more than 6,900 students over the life of the building
- Bureau of Labor Statistics – job growth in EOAS fields will increase “faster than average” – 10% in geosciences, 9% meteorology, 7% hydrologists, and 11% in environmental science
- Considerable demand within Florida (climate and weather forecasting)
- BOG Economic Impact Study – 1,451 construction jobs created
- Raises the stature of a very strong program to the position of an elite program in the nation

Earth, Ocean and Atmospheric Science Building

\$29 Million

Total Project Budget: \$69.85 Million

Total Funding Request: \$29 Million

Appropriated 2012-13 \$3.85 M

Appropriated 2014-15 \$20.00 M

Appropriated 2015-16 \$5.00 M

Appropriated 2016-17 \$12.00 M

Requested 2017-18 \$29.00 M

Project Size:

Floor: 6

Footprint: 23,000 gsf

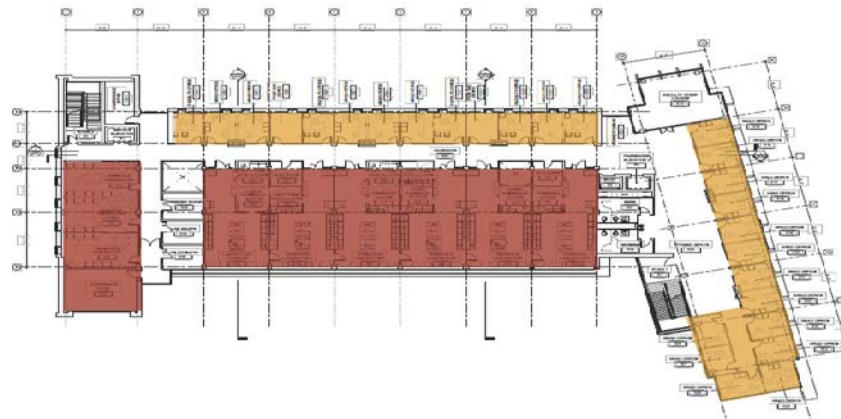
Total Area: 135,860 gsf

Project Schedule:

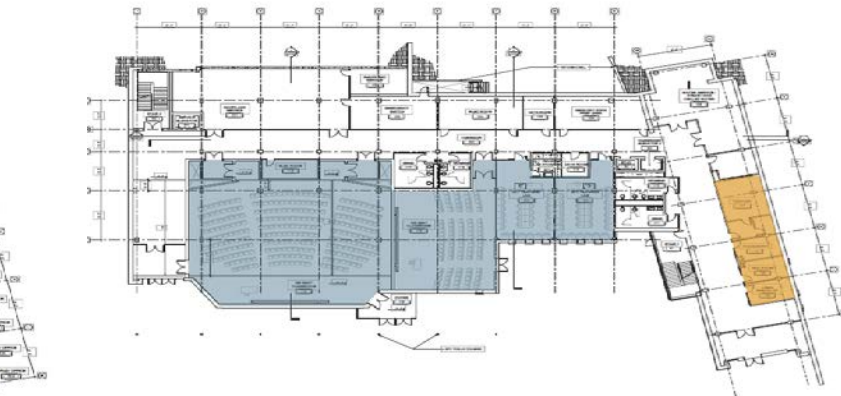
Construction Start Date: January 2017

Anticipated Completion Date: December 2018

Projected PO&M Costs: \$1.4 M



Research

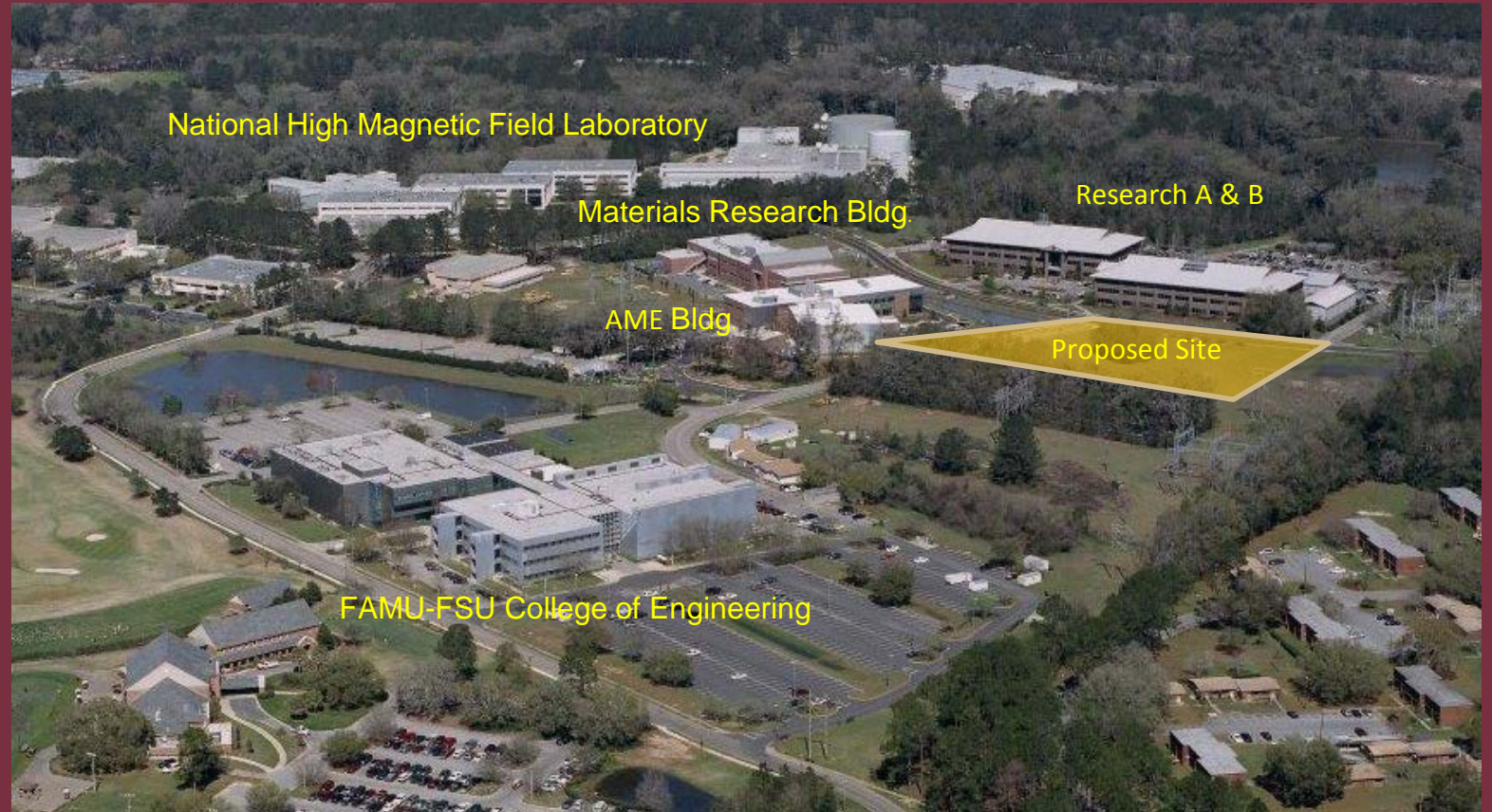


Office

Instructional

Interdisciplinary Research & Commercialization Building

\$31 Million



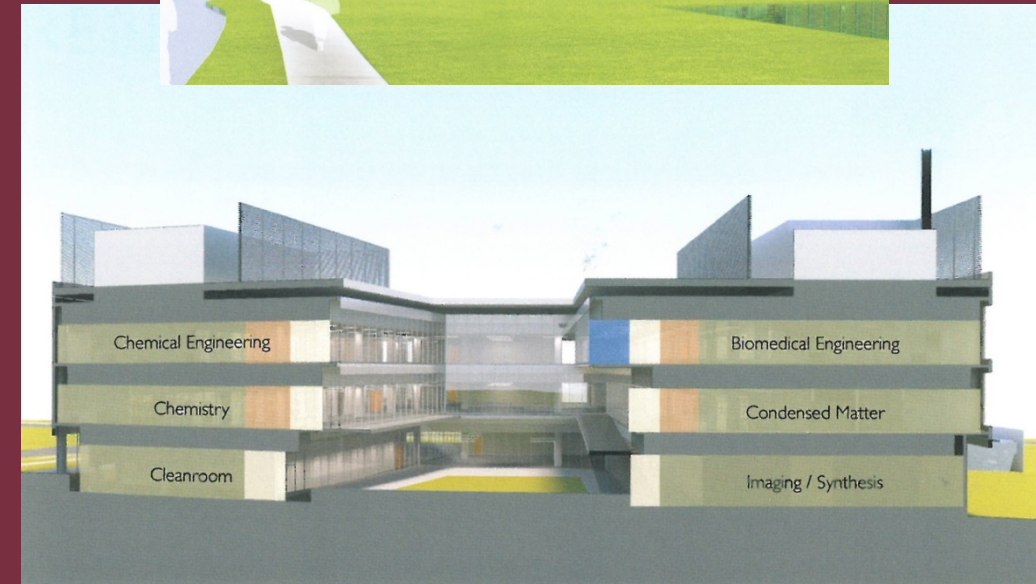
FSU Southwest Campus

IRCB is a research facility for faculty in the physical sciences, engineering and “hard” biology to coalesce into collaborative groups.

Interdisciplinary Research & Commercialization Building

\$31 Million

- Leverages private funds that will house 24 faculty groups from as many as seven different academic units
- Will house new faculty hires in interdisciplinary physical sciences & engineering
- Shared core facilities
- Provides incubator space for development of spin-off companies



Interdisciplinary Research & Commercialization Building

\$31 Million

ROI

Creates a unique research experience learning environment for undergraduate and graduate students in STEM ***Programs of Strategic Emphasis*** (BOG) including engineering disciplines, chemistry, physics and computational sciences and provides space necessary to recruit and house new faculty hires in these key areas

- 24 new faculty groups
- 26 postdoctoral fellows
- 136 graduate students (15-20 additional STEM graduate degrees per year)
- 72 undergraduate researchers per year (contribute to 20-25 undergraduate degrees per year)
- Facilitates employment opportunities of students through interactions with private sector users of core facilities and incubator space
- BOG Economic Impact Study – 1,900 construction jobs created

Increased productivity

- \$8-9M per year in additional contract & grant awards per year which equates to more than \$320,000,000 over the projected life of the building
- 48 additional invention disclosures per year
- 12-13 additional patents per year
- Potential spin-off companies from new Intellectual Property

Interdisciplinary Research & Commercialization Building

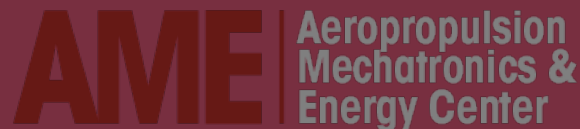
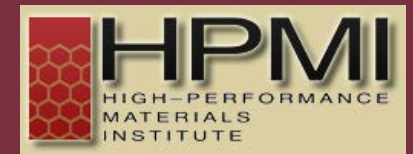
\$31 Million

ROI

Provides a new model for research lab space that is open, flexible, and has the ability to grow and change over the anticipated lifespan of the building

Leverages adjacencies

- National High Magnetic Field Laboratory
- Applied Superconductivity Center
- High Performance Materials Institute
- Aero-Propulsion Mechatronics & Energy Center
- Center for Advanced Power Systems



Interdisciplinary Research & Commercialization Building

\$31 Million

Total Project Budget:

\$85 M = \$41 M State + \$44 M Private Funds

(107% match of State funds)

Total Funding Request: \$41M

Request for 2017-2018 \$ 31 M

Request for 2018-2019 \$ 10 M

Projected PO&M Costs: \$1.8 M

Projected Schedule:

Anticipated Construction Start Date: September 2017

Anticipated Construction Completion Date: July 2019

Projected Size: 118,000 gsf

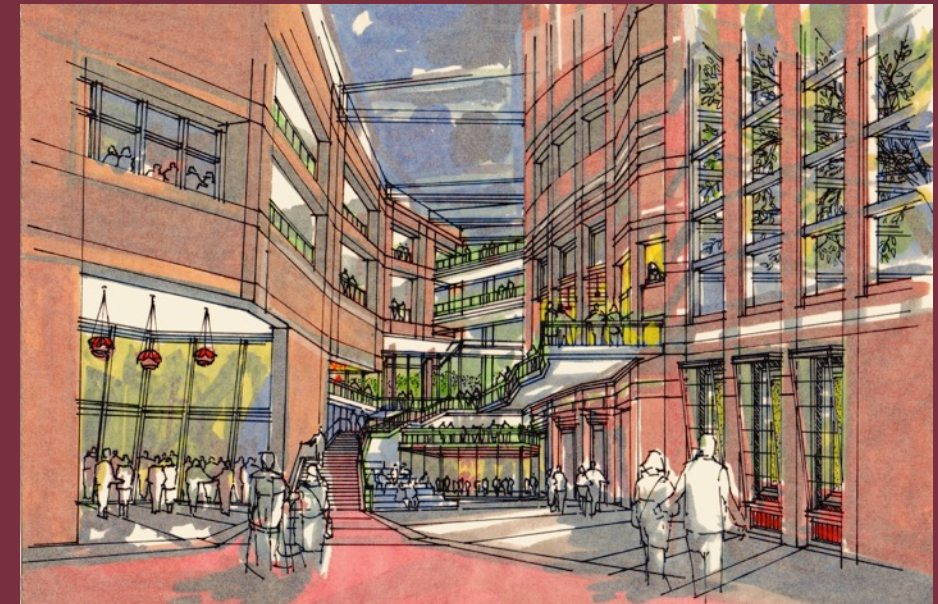
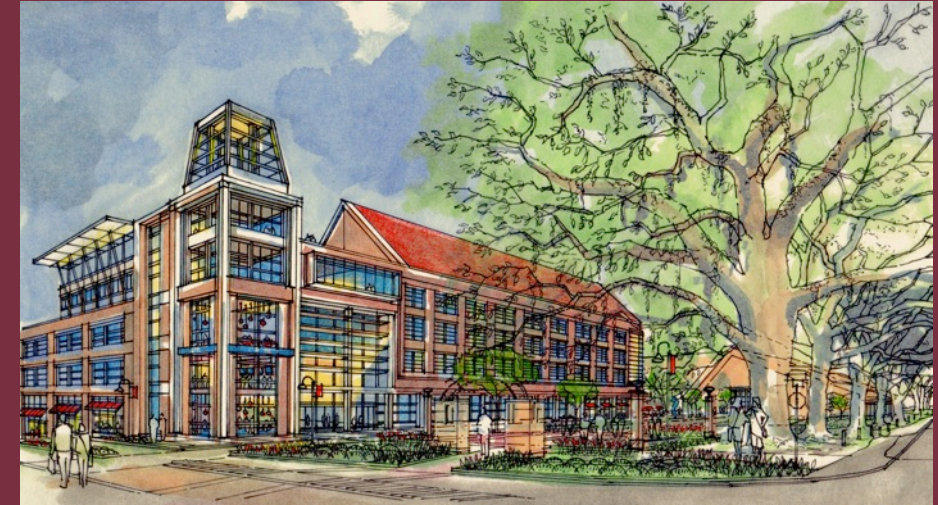


College of Business

\$15 Million

Legacy Hall

- Seven departments, including the Dedman School of Hospitality
- Eleven centers and institutes
- 6,000+ students, faculty, and staff
- Entrepreneurial space along active edges
- Anchors the SE corner of campus; Beginning and ending of Legacy Walk
- Helps to connect FSU with business and government communities



College of Business

\$15 Million

ROI

Leverages funds provided through private donations that will increase enrollments in high demand programs such as entrepreneurship, professional sales, finance, and accounting

Enhances degree production in *Programs of Strategic Emphasis* including accounting, finance, banking, human resources, and insurance. Graduated 1,693 students last year which will result in more than 66,000 students over the projected life of the building

The Bureau of Labor Statistics projects substantial job growth in Business fields that range from 13% to 26% over the next ten years. Job growth projections for actuaries are up 26.1%, management analysts up 18.6%, financial analysts up 15.5%, human resource managers up 13.2% and accountants up 13.1%

Provides a 44% increase in instructional, collaborative, and entrepreneurial space to accommodate advanced networking and career development opportunities, which will enhance start-up creation, corporate recruiting activities, job placement, and starting salaries.

\$15 Million

\$15 Million

Creates incubator space that ties in with other entrepreneurial spaces on campus and in the community – all with the goal of enhancing start-up creation and economic development.

Creates a full-service internship and professional development program by creating space that does not exist.

Allows the COB's centers and institutes to create new programs and research activities that will draw in the business community exposing students to both executives and government agencies.

Creates incredible synergies with a new conference hotel and conference center in the Arena District, which, along with the College of Law, creates a major professional and innovation hub for the region.



College of Business

\$15 Million

Total Project Budget:

\$88 M = \$44 M State + \$44 M Private Donations
(100% match of State funds)

Total Funding Request: \$44 M

Request for 2017-2018	\$ 15.00 M
Request for 2018-2019	\$ 25.65 M
Request for 2019-2020	\$ 3.35 M

Projected PO&M Costs: \$ 2.1M

Project Schedule:

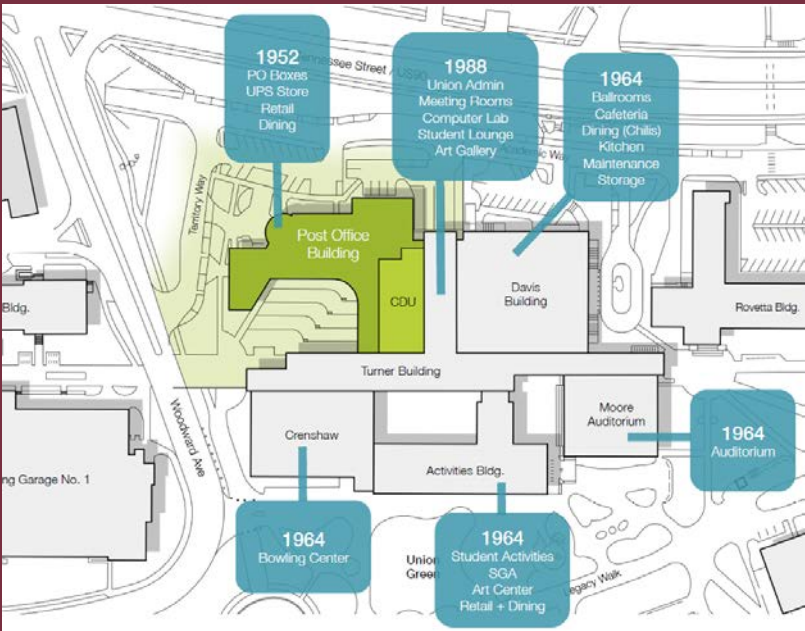
Anticipated Construction Start Date: November 2017

Anticipated Construction Completion Date: June 2019

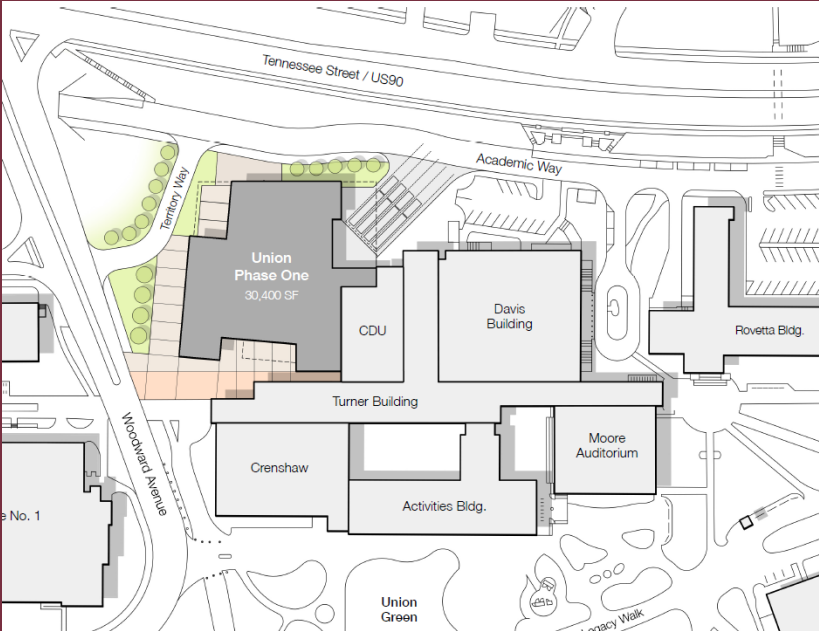
Project Size: 216,000 gsf



Oglesby Union Phase I



Existing Site Plan



Proposed Site Plan



Bird's Eye View



West Elevation

Oglesby Union Phase I

Demand Metrics

- Over **2.8 million** people visited the Oglesby Union complex in the past year
- Over 22 million square feet of space is reserved by students, faculty, staff in each of the past 10 years
- Many of our larger spaces (Union ballrooms) are booked solidly 6-12 months in advance
- Most of the Oglesby Union is over 50 years old, being originally built in 1964, when our student enrollment was 15,000
- Our programs and activities had over **250,000** attendees in fiscal year 2015-16 (combination of visits to events sponsored by the Askew Student Life Center Cinema, Club Downunder, Union Productions, Flying High Circus, Art Center, Crenshaw Lanes)
- We hosted **17,000 events** in our union facilities in fiscal year 2015-16
- We have grown to over 750 Recognized Student Organizations in 2016

Oglesby Union Phase I

ROI

- Opportunity to partner/support the new Jim Moran School of Entrepreneurship by creating a learning community space which helps prepare students to understand and engage in successful innovation and entrepreneurial activity across all disciplines, career fields, and civic engagements.
- Create a new gateway (along with EOAS) into Florida State University's Main Campus
- Graduating seniors who were involved in one or more student organizations are 1.5 times as likely to indicate they plan on giving back financially to the University.
- Graduating seniors who are members of fraternities and sororities are 2.1 times as likely to indicate they plan on giving back financially to the University

Oglesby Union Phase I

Total Project Budget:

\$50 M = \$22 M CITF Funding + **\$28 M Other Funding Sources**

Project Schedule:

Anticipated Construction Start Date: April 2018

Anticipated Construction Completion Date: August 2020

Project Size: estimated 100,000 gsf

Board of Governors Facilities Workshop

EOAS, IRCB, COLLEGE OF BUSINESS, AND UNION BUILDINGS

OCTOBER 18, 2016 ■ PRESIDENT JOHN THRASHER