

# Joint Meeting of BOG Facilities and Innovation & Online Committees

**Ralph C. Wilcox**

*Provost and Executive Vice President*

**Calvin Williams**

*Vice President for Administrative Services*

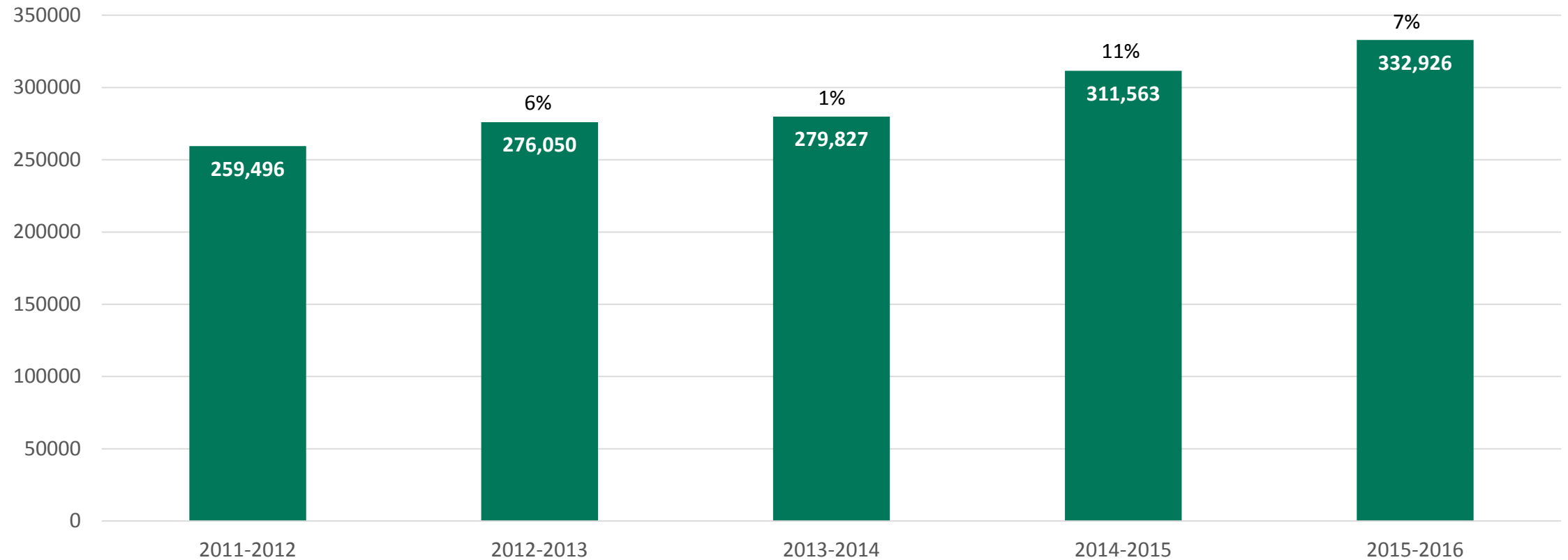
---

Florida Gulf Coast University | May 12, 2016



# USF SCH Online Growth by Year

5 Year Academic Online SCH Growth Trend



# By the Numbers 2015-16

**19%**

of USF all degree programs are fully online

**15**

fully online undergraduate degree programs and concentrations\*

**100%**

of USF general education requirements can be completed online

**66%**

of all USF students take at least one course online

**27%**

of total USF FTE is delivered online

fully online graduate certificates

**55**

fully online graduate degree programs\*

**51**

**2,814**

online sections delivered at USF through 1,233 classes, including Maymester and Winter Session

**112,994**

enrollments in online classes

*\*Degree programs reflect a duplicated count*

# Distance Learning FTE\* (3% Annual Growth)

3% Projected Growth	Actual 2010-11	Actual 2014-15	Planned 2018-19	Planned 2021-22
<b>Undergraduate</b>				
State fundable	4,968	6,437	7,245	7,916
Non-state fundable	116	122	137	150
<b>Total</b>	<b>5,084</b>	<b>6,559</b>	<b>7,382</b>	<b>8,066</b>
<b>Graduate</b>				
State fundable	1,157	1,287	1,449	1,583
Non-state fundable	82	251	282	309
<b>Total</b>	<b>1,239</b>	<b>1,538</b>	<b>1,731</b>	<b>1,892</b>

\*Florida definition of FTE, which divides undergraduate credit hours by 40 and graduate credit hours by 32.

# Online Support Personnel

## Leadership Team (6)

### Digital Learning (49)

Instructional Designers  
ID Project Managers (PM)  
Asst. Director, Course Design  
Sr. Cinematographer/PM  
Cinematographer Editor  
Audio Production  
Art Director  
Multimedia Designers  
GA/TA Course Support

### Shared Support (44.5)\*

IT Support  
Academic/Student Support  
Course Coordinators (COM)

### Digital Recruitment (16.5)

Digital Technology  
Market Research  
Digital Production  
Digital Recruitment  
Admission Support  
Program Development

### Administrative Support (5)

Tech Support  
Human Resources  
Receptionist & Support

### Finance (3.5)

Budgeting & Forecasting  
Pricing & Modeling  
Audit & Compliance

### Other (10)

State Authorizations  
and USF System Reporting  
Instructional Effectiveness and  
Learning Outcomes  
Interession (online)  
Online Faculty Development  
Online Graduate Certificates

*\*campus personnel estimate*

# Services offered in support of online programs

---

Market research & analysis

Lead generation

Financial modeling

Recruitment

Program development

Admissions support

Course conversion & refreshes

Authentication & testing

Online faculty development

BOG, legislative & SACS compliance

ADA compliance

Student support services

# Unique Space Requirements for Online Support



**USF Tampa**

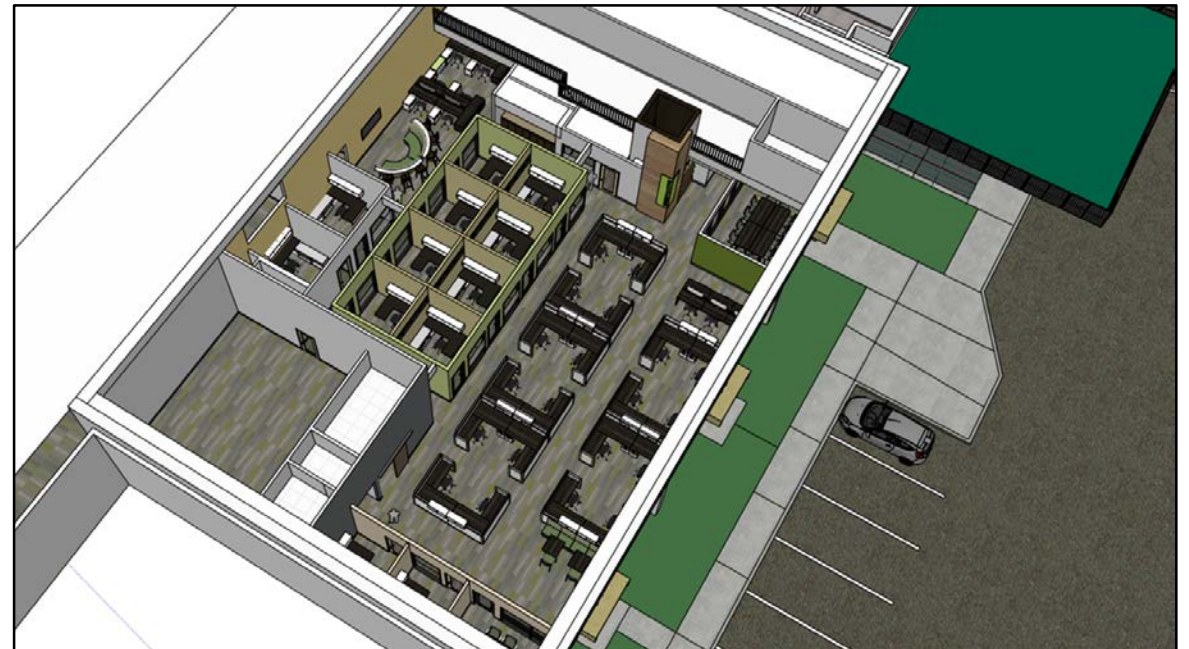
21,005 Sq. Ft.

**USF St. Petersburg**

6,500 Sq. Ft.

**USF Sarasota-Manatee**

455 Sq. Ft.





# Current planning process:

How have online enrollment trends shaped your institution's recent capital funding requests?

- Reduction in traditional classroom capacity due to learning space redesign of smart classrooms to facilitate active and collaborative learning for enhanced student success.
- Collaborative study space is in high demand.
- Students enrolled exclusively in online education reduces demand for parking and other amenities.
- Differentiated needs for instructional space across the USF System with growth in online and traditional enrollment at USFSP and USFSM.
- FTE formula-based space need calculations for the Classroom space category are reduced by Distance Learning FTE for the Educational Plant Survey project recommendations.



# SMART Lab & Expanded Learning Commons

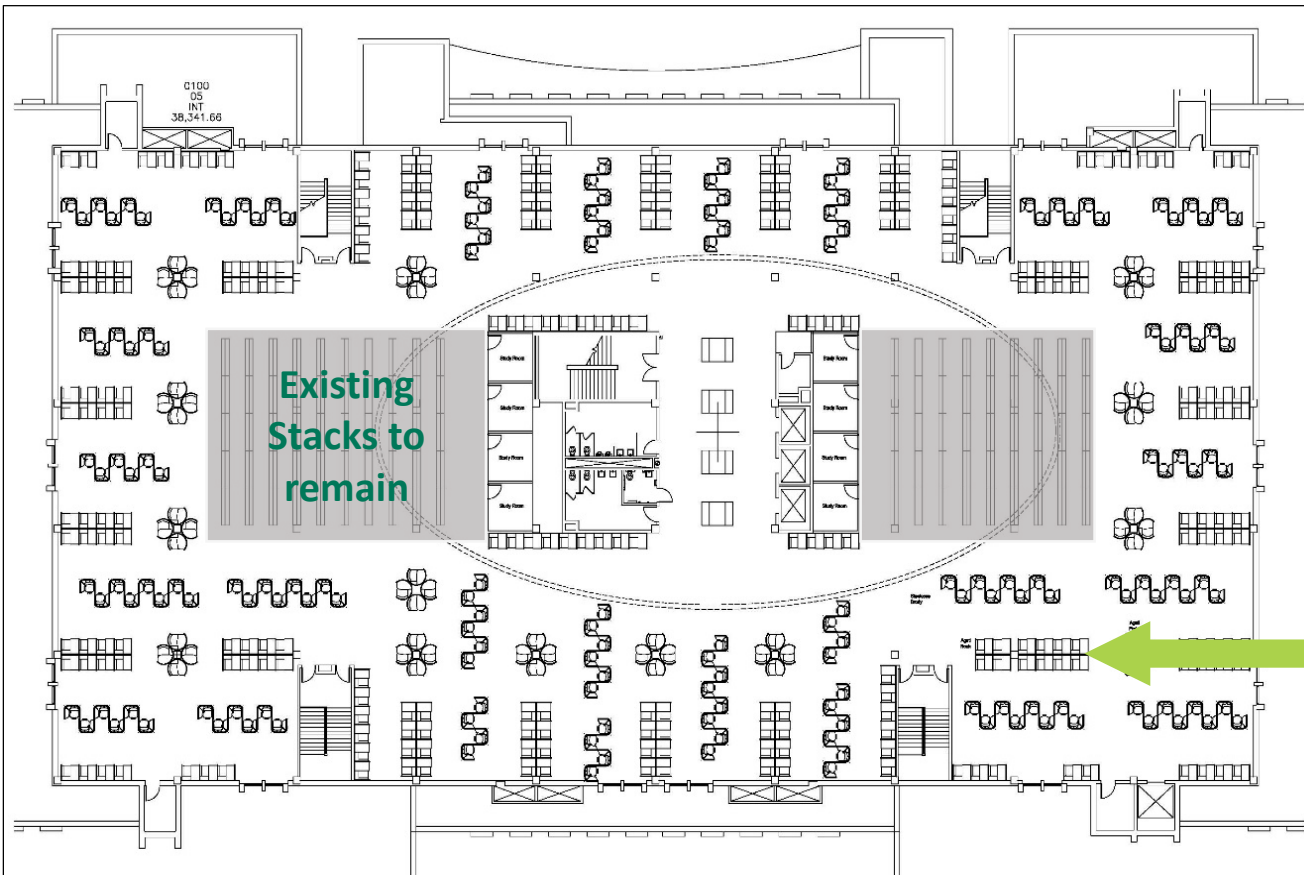
## Library 2nd Floor



- Complete renovation and repurpose
- Relocation of existing book stacks from the more than 33,000 sq. ft. space
- Learning Commons expanded to include: collaborative media stations, study booths around perimeter, movable tables and chairs with up-to-date power connections
- Smart Lab includes over 300 computer stations with integrated software for mathematics, science, research and technology

# Proposed Study Space

Increase seating from 60-400 seats



Remove Stacks around perimeter to create study space and relocate to compact shelving in basement

Proposed Study Carrels



Proposed Group Study



# Suggestions for the BOG in light of online growth

---

- Funding for smart classrooms, digital technologies, and e-resources – real-time student/faculty interaction and virtual meeting spaces, as well as online career counseling and e-advising
- Increase the classroom space need formula for non-DL students to reflect the need for flexible classroom configurations that encourage active discussion based learning
- Funding for the repurposing of space for collaborative learning
- Consideration of the different space needs from the four Florida approved definitions: Fully distance learning course, primarily distance learning course, hybrid course and primarily classroom course



The University of South Florida System (USF) has made significant strides in developing high-quality online learning for USF students. We are committed to supporting the *SUS 2025 Strategic Plan for Online Education* and expanding our online portfolio of educational program and course offerings with a focus on access, affordability, and quality and student success. The key will be that our university communities have to support state-of-the-art learning environments and other academic technology-rich learning support spaces, allowing our students to engage synchronously with students around the world with supplementary digital content and, most particularly, the integration of technology for enhanced STEMM learning *and* research.

---

*Thank You*

---

