



BOARD *of* GOVERNORS

State University System of Florida

Facilities Space Needs Formula - the Inexplicable Explained

Chris Kinsley, Finance and Facilities Assistant Vice Chancellor
May 12, 2016

www.flbog.edu



Facilities Space Needs Formula

- Started with California - “Space standards began in 1947 to serve as guides for planners (applied to classrooms only)”. Florida adopted in the early 1960s in the early years of the Board of Regents.
- Classroom space standards are based on the theory that an appropriate minimum amount of space can be rationally determined from a few simple assumptions.



FSU Conradi Building – Completed in 1956; now demolished

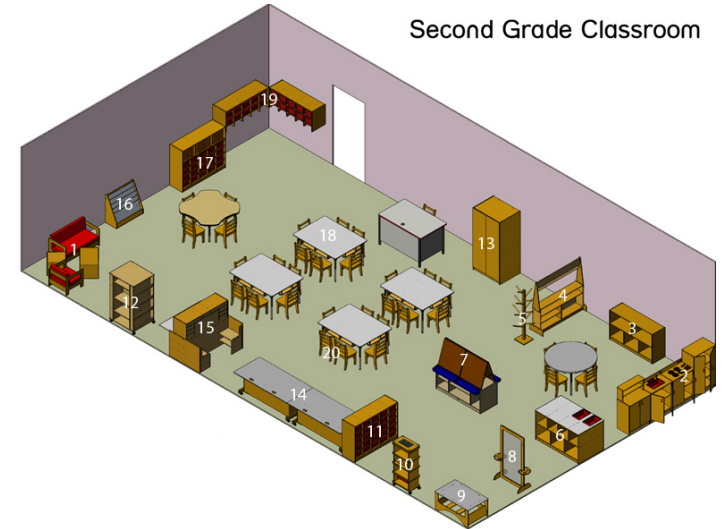


Facilities Space Needs Formula

Elementary (School) Example

- 1 Teacher
- 18 Primary Students (K-3rd grade)
- 49 Net Square Feet of Core Educational Space per Student

- Results in a 1,000 GSF classroom (32X32)



Traditional thinking is - “We have too many trailers, we need more classrooms”



Facilities Space Needs Formula

New thinking ; Students need space that improves learning outcomes

Learning Spaces: an e-book collection Diana G. Oblinger EDUCAUSE

“Students blend the physical and virtual worlds, moving seamlessly between living and learning environments.When they have a problem to solve or assignment to complete, the steps are integrated rather than sequential. Colleges and universities can model spaces after students’ integrative behavior. “



Photos from FIU’s Parking Garage 6



Facilities Space Needs Formula

Universities - a more complicated equation



- 1 credit hour = 1 “real” hour ?
- Semesters
- Longer hours of operation - 8 am to 10 pm
- Labs and study spaces may be 24/7

- Multiple Faculty Types/Interdisciplinary
- Multiple student levels, FTIC through post-doc.
- Multiple buildings on multiple sites





Facilities Space Needs Formula

The Florida SUS Space Needs Formula

3 Key Inputs

- Florida Fundable FTE
- 9 Space Type "Factors"
- Current Inventory

Output

- Relative Space Need by Space Type

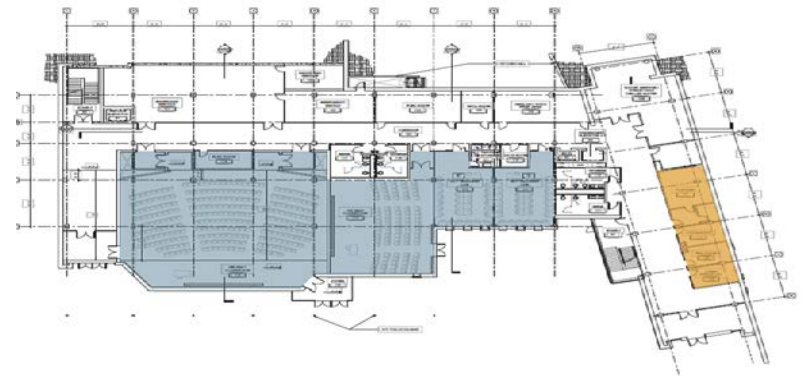
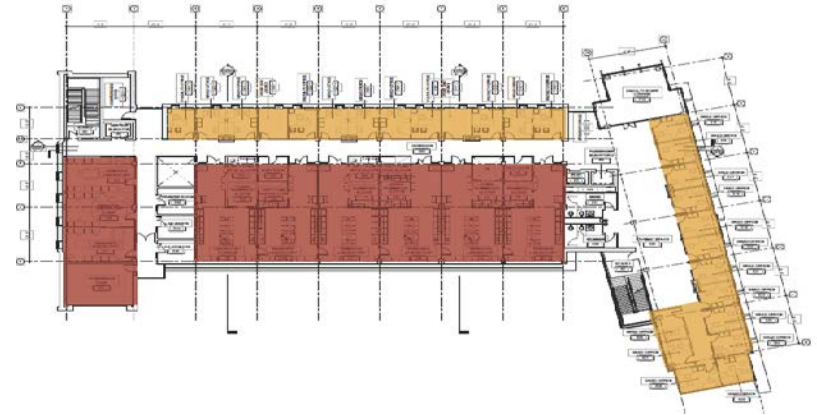




Facilities Space Needs Formula

The 9 E&G Space types by NSF

•Classroom	2,404,807
•Teaching Lab	3,318,011
•Study	2,513,808
•Research Lab	5,886,000
•Office	11,513,442
•Auditorium/Exhibition	1,442,581
•Instructional Media	175,470
•Gymnasium	1,692,918
•Support Services - Parking (14,000,000 +)	16,748,946
•System Total	45,774,980



■ Research ■ Office ■ Instructional



Facilities Space Needs Formula

Online Education may impact all 3 key formula inputs: Current Space Formula Factors; FTE and Space Inventory Classification.

Current Inventory – Circulation space becoming study space; example from FSU’s Johnson Building



FTE – Fundable vs. non-fundable
Florida FTE vs. US FTE

- Classroom 12 NSF for each traditional FTE; 0 for distance-learning FTE
- Teaching Lab 15 NSF per FTE
- Study Space 20 NSF per FTE average
- Instructional Media 2 NSF per FTE





Facilities Space Needs Formula

Space management is a Higher Education Policy hot topic, as illustrated by a few recent conference seminar titles:

Innovations in Space Management

Campus of the Future: Anticipating How Far, How Fast Will Changes in Instructional Delivery, Multidisciplinary Research, and Student Enrollment Patterns Impact Space Needs?

Space Utilization Excellence: What Design Features, Allocation Processes, and Budget Incentives Most Improve Space Utilization and Help Redeploy Under-Utilized Space?

Find the Hidden Space on Your High Density Campus



BOARD *of* GOVERNORS

State University System of Florida

www.flbog.edu