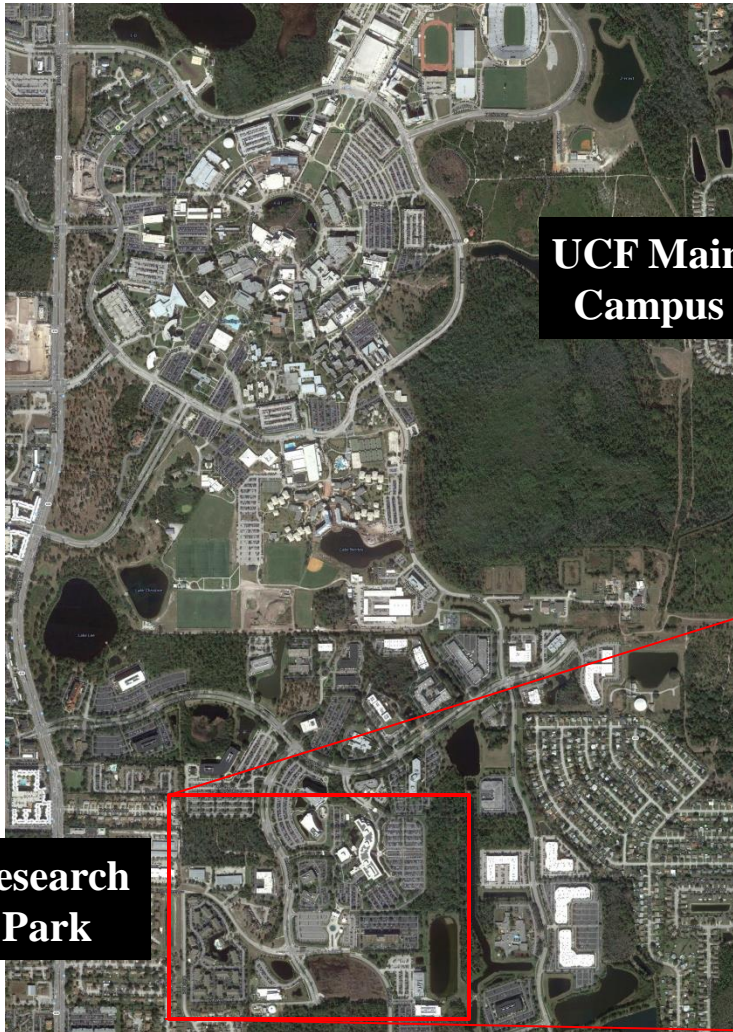




# UNIVERSITY OF CENTRAL FLORIDA

## UCF – Partnership IV \$14M



**UCF Main  
Campus**

**Research  
Park**





## UCF – Partnership IV \$14M

### ROI

- ✓ Preserves a nearly \$5 billion Modeling and Simulation industry in Central Florida that has statewide impact
  - 60,700 jobs (direct, indirect, induced) throughout Florida at almost 3 times the Orange County median earnings
  - 1,000+ Florida companies and organizations and 2,800 military and civilian personnel
  - More than \$4.8B in Gross State Product and nearly \$8B in state sales (economic output) activity
- ✓ Supports UCF's state charter as the Center of Excellence in Simulation and Training
- ✓ Enhances UCF-DoD partnership for simulation and training
- ✓ Eliminates costly leases that could drive DoD cost-cutting decisions and personnel reductions affecting Florida



## UCF – Partnership IV \$14M

### DEMAND METRICS

- ✓ Avoids potential loss of strategic national programs and dollars to the region and to the state
- ✓ Creates classified labs for both the military and UCF
- ✓ Satisfies the demand from local Modeling, Simulation, and Training employers for UCF students trained in advanced technologies
- ✓ Status:
  - Building 1 (86,000 GSF) under contract, pending Governor and Cabinet approval
  - Necessary building modifications; Furniture, Fixtures, and Equipment purchases; force protection installation; and additional property acquisition to be undertaken with remaining and future funds
- ✓ Milestones:
  - Anticipated construction and acquisition start date: December 2015
  - Anticipated completion date: June 2017



## UCF – Partnership IV \$14M

### BUDGET

#### REQUEST

<u>Total project budget:</u>	<u>\$42,000,000</u>
Prior funding	\$28,000,000
Request for 2016-2017	\$14,000,000

Plant Operations and Maintenance (Annual Estimate): \$2,700,000





## UCF – Engineering Building I \$14.8M





## UCF – Engineering Building I \$14.8M

### ROI

- ✓ Bolsters UCF's existing engineering program, which produces 1,645 Florida STEM graduates a year, with top entry-level incomes surpassing \$65k
- ✓ Increases annual research expenditures by \$700,000 (13% increase over current amounts)
- ✓ Extends the life of a 30-year old building, avoiding high costs of demolition and new construction (estimated to be \$66M)
- ✓ Eliminates deferred maintenance through capital investment, in accordance with best practices
- ✓ Lowers operating costs through energy efficiency and reduced maintenance



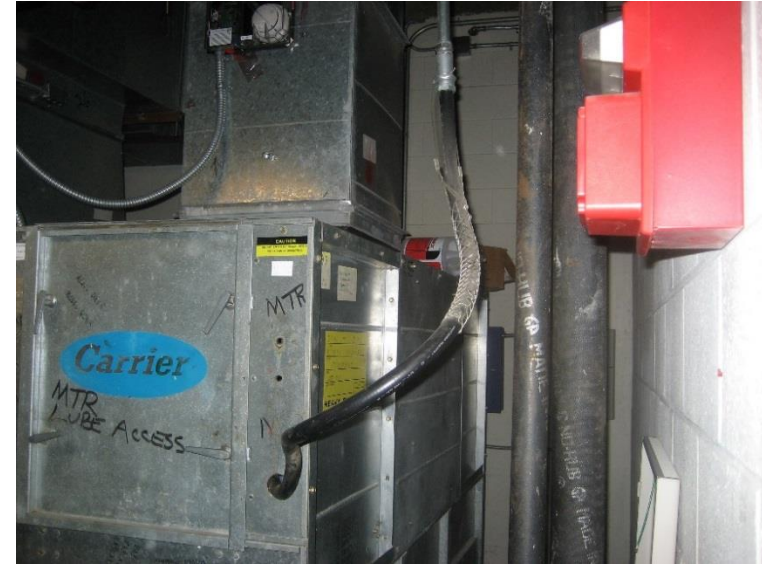




## UCF – Engineering Building I \$14.8M

### DEMAND METRICS

- ✓ Supports the preeminent College of Engineering and Computer Science, with 8,278 undergraduate students and 1,339 graduate students: the largest college of its kind in Florida and the 9<sup>th</sup> largest in the nation
- ✓ Creates and upgrades classrooms, instructional and research labs, clean rooms, and ancillary spaces
- ✓ Addresses issues identified by independent study:
  - Mechanical, electrical, plumbing (MEP) systems beyond end-of-life
  - Life safety and Americans with Disabilities Act (ADA) deficiencies





## UCF – Engineering Building I \$14.8M

### DEMAND METRICS

- ✓ Status:
  - In design: previously appropriated funds only enough to cover partial MEP scope
  - Balance of budget request required to complete MEP, perform life safety and ADA upgrades, and renovate classrooms, labs, offices, restrooms, and common areas
  
- ✓ Milestones:
  - Anticipated construction start date: April 2016
  - Anticipated completion date: April 2018





## UCF – Engineering Building I \$14.8M

### BUDGET

#### REQUEST

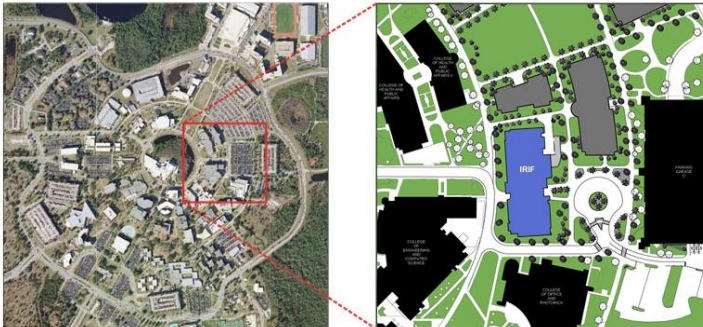
<u>Total project budget:</u>	<u>\$19,404,660</u>
Prior funding	\$3,620,723
Request for 2016-2017	\$14,802,697
Request for 2017-2018	\$981,240



## UCF – Interdisciplinary Research Facility \$6M



Conceptual Rendering



Site Map



## UCF – Interdisciplinary Research Facility \$6M

### ROI

- ✓ Supports UCF's ranking as a "very high research activity" university by the Carnegie Foundation
- ✓ Supports programs with \$26M in external funding and increases research funding by \$20M per year
- ✓ Increases number of Florida STEM graduates 41% (1,000 additional per year over 2,620 in 2014-15)
- ✓ Provides economic impact to local economy from business incubation
  - More than \$2.5 billion in first 15 years
  - Over 150 current incubator clients and more than 100 graduated companies
  - Thousands of jobs (currently 3,698 in Central Florida), with salaries averaging \$67,541
- ✓ Enables UCF to continue to excel in patent production (ranked 13<sup>th</sup> in the world among universities for U.S. patents granted in 2014)



## UCF – Interdisciplinary Research Facility \$6M

### DEMAND METRICS

- ✓ Provides critically needed space to support research activities; UCF's 407,000 net assignable research square feet is **one-half** the space needed, as calculated by the state's formula
- ✓ Building size: 99,360 GSF – new space will compensate for 20% of the space deficit
- ✓ Supports programs in nano-science technology, advanced materials processing and analysis, optics and lasers, energy research, and the incubator program
- ✓ Creates 57 research and incubator labs, 23 material characterization rooms, lecture halls, conference rooms, offices, and ancillary spaces
- ✓ Positions UCF for large research projects and partnerships
- ✓ Milestones:
  - Anticipated construction start date: July 2016
  - Anticipated completion date: December 2017





## UCF – Interdisciplinary Research Facility \$6M

### BUDGET

#### REQUEST

<u>Total project budget:</u>	<u>\$46,614,853</u>
Request for 2016-2017	\$6,042,667
Request for 2017-2018	\$34,529,519
Request for 2018-2019	\$6,042,667

Plant Operations and Maintenance (Annual Estimate): \$1,490,400



## UCF – Downtown Building 1 \$20M



Site Map



## UCF – Downtown Building 1 \$20M

### ROI

- ✓ Provides access to 4,300 students
- ✓ Includes 6 programs of strategic emphasis
- ✓ Results in 1,300 degrees awarded annually
- ✓ Increases access to student internships and learning opportunities
- ✓ Leverages nearly \$5 in private, philanthropic, and city resources for every \$1 invested by the state



## UCF – Downtown Building 1 \$20M

### DEMAND METRICS

- ✓ Supports high-skill, high-wage occupations with projected demand through 2022
- ✓ Builds on existing presence in downtown Orlando, strengthening location-based education in Central Florida
- ✓ Creates lower-cost pathways to higher education through new partnerships with Valencia College and Orange County Public Schools
- ✓ Provides students with more opportunities to engage in these settings via experiential learning and internships, leading to higher graduation and retention rates and increased job placement
- ✓ Integrates SUS and state college system for increased access
- ✓ Leverages city and private investment in urban core
- ✓ Builds on our location-based successes at Rosen College of Hospitality Management and College of Medicine at Lake Nona Medical City
- ✓ Milestones:
  - Anticipated construction start date: May 2017
  - Anticipated completion date: July 2018





## UCF – Downtown Building 1 \$20M

### BUDGET

#### REQUEST

<u>Total project budget:</u>	<u>\$60,000,000</u>
Request for 2016-2017	\$20,000,000

Plant Operations and Maintenance (Annual Estimate): \$2,475,000