

FLORIDA INTERNATIONAL UNIVERSITY

Strategic FIU Expansion Modesto A. Maidique Campus



Current



Vision

Why is the FIU Expansion Needed?

- To meet the needs of the ever-growing South Florida community, FIU is looking at ways to expand its physical space and grow strategically
- FIU's main campus is the second smallest in size and has the highest FTE and Headcount per acre

Institution	Acres	Headcount/Acre	FTE/Acre
FIU	342	104	59
UF	2050	24	13
UWF	1666	7	4
USF	1493	24	16
UCF	1415	42	22
UNF	1170	14	8
FGCU	765	18	11
FAU	746	41	20
FSU	447	92	59
FAMU	423	29	18
NCF	119	7	6

- FIU has the highest space utilization rate in the SUS, achieving 160 percent of statutory requirements; has the largest percentage of classes with 30+ students; the smallest percentage of classes with less than 30 students; and has the second highest percentage of classes with 100+ students

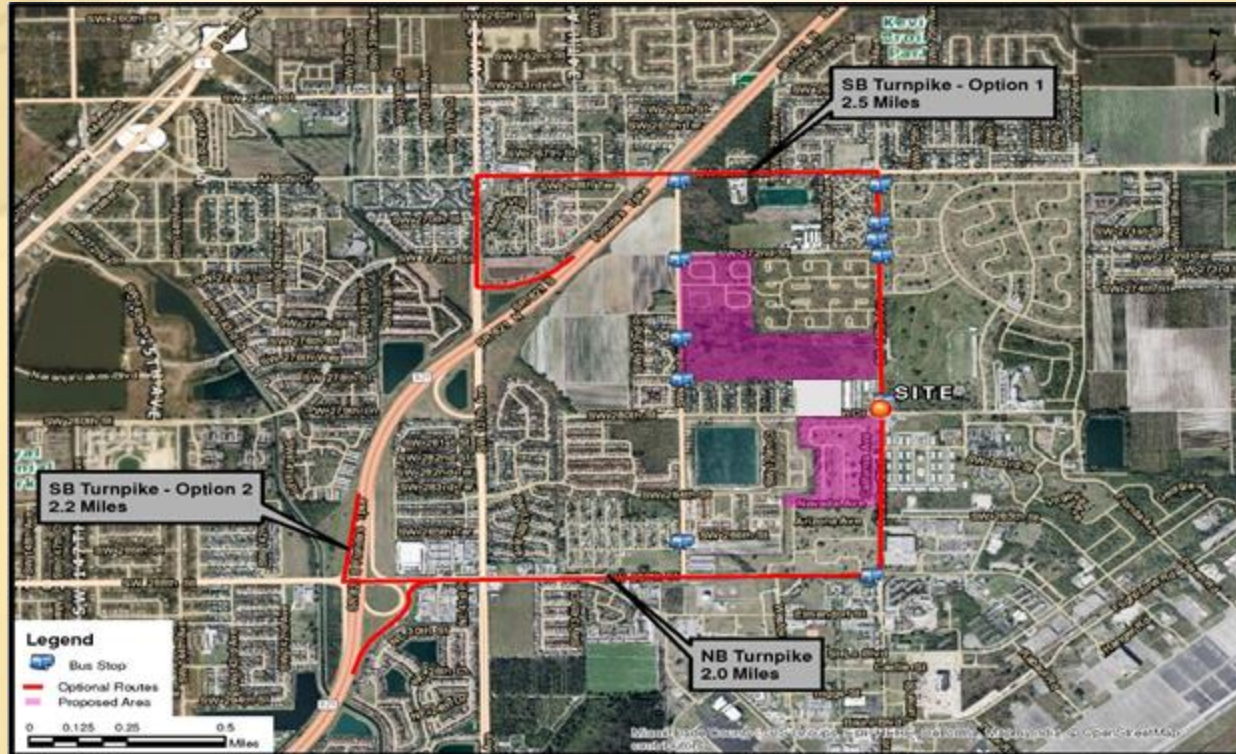
How Will the Funds Be Used?

- FIU, Miami-Dade County, and the Fair have been working together since 2010 to develop FIU's expansion and Fair relocation plans
- Total expansion cost of \$50 million will be used for relocation and replacement costs of the Fair, land acquisition and improvements
- 64 acres located contiguous to campus, currently used by the Miami-Dade County Fair and Expo, will become part of FIU's campus (342+64= 406 acres)
- \$10 million was appropriated in 2014-15; \$5 million appropriated in 2015-16 (Governor vetoed because project total costs not defined); \$40 million remaining
- On September 3, 2014, the Miami-Dade County Commission approved a framework for FIU acquisition of the site as well as a resolution for voter approval of the acquisition
- On the November 4, 2014 general election, Miami-Dade County voters overwhelmingly approved FIU's expansion onto the County land currently leased by the Fair; 65% of 500,000 voters in favor
- Over 27 possible sites have been reviewed

Homestead Site

- Project location, site improvements and building improvements have been quantified for a total project cost of \$50 million
- Approximately 127 acres will be provided by Miami-Dade County
- Site development costs (site work, parcel assembly, utilities, paving and parking) estimated at \$30 million
- Fair relocation replacement costs of \$20 million for exhibition space, operations, maintenance and offices

Homestead Site



Rendering of New Fairgrounds



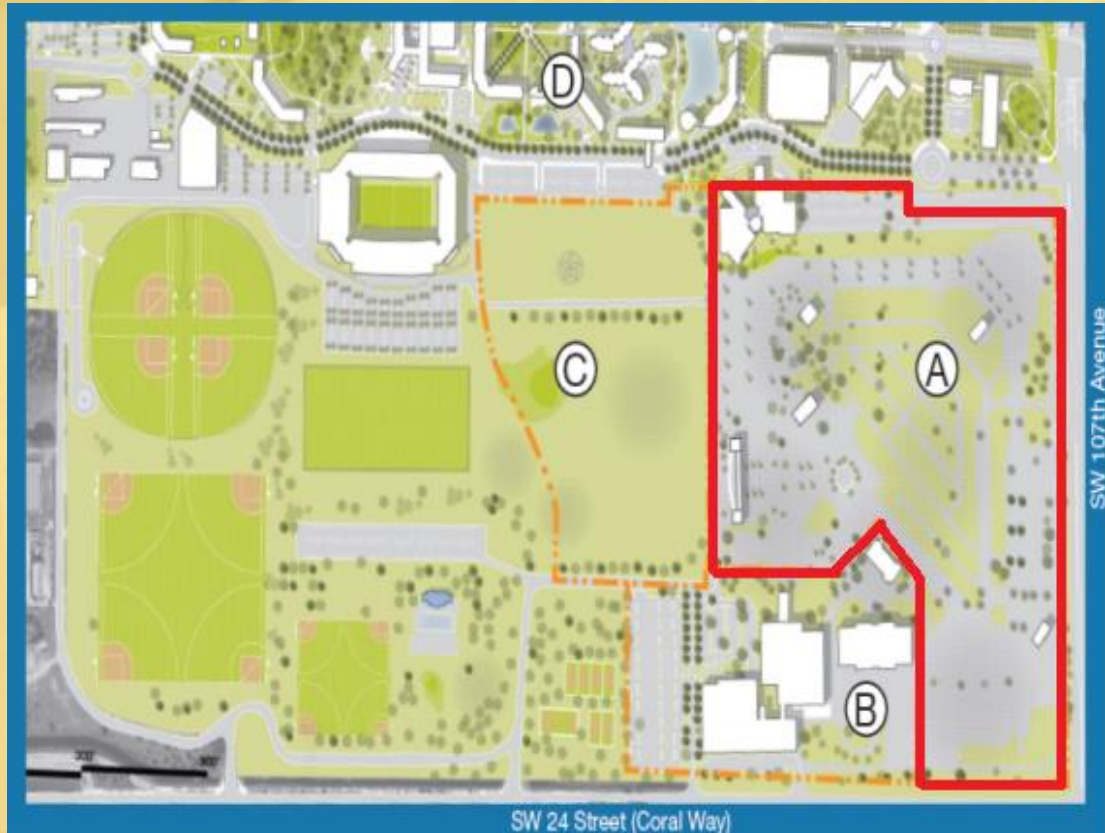
What is the Vision for the Acquired Land?

- **ACADEMIC AND RESEARCH SPACE**
 - Classrooms; teaching, research and technology labs; faculty and staff offices
 - Emphasis on facilities that support and expand programs in science, technology, engineering and mathematics (STEM)
 - Expansion of research capacity for Medicine, Nursing, Public Health and Social Work
- **INCUBATOR, ENTREPRENEURSHIP AND DATA CENTER**
 - Innovation and entrepreneurship space to focus on community economic development
 - University research incubator
 - Data center to support university research and teaching technology
- **LOWER DIVISION STUDENT HOUSING FACILITIES**
 - 2,000 additional beds with meeting rooms and study space
- **SUPPORT SPACE**
 - Exercise, health, wellness, and recreational facilities for students
 - Food service facilities, student services, and pedestrian pathways and green space

How Will Students and the Community Benefit

- Increase bachelors and graduate degrees in STEM
- Increase number of STEM graduates employed in Florida
- Improve student retention and graduate rates through expanded industry partnerships and internships
- Increase research expenditures and jobs
- Increase patents, licenses and start-up companies
- Total economic impact estimated at over \$541 million annually

FIU Expansion Site Plan/Map



Current Tamiami Park
and fairgrounds map

A. 64 acres currently
occupied by the Fair

B. 22 acres remaining
with the county or Fair/
park for exposition
space

C. 26 acres of
undeveloped land
adjacent to the
Fair site (now used
for parking) would
become available for
park development

D. 342 acres current
FIU campus (406 acres
with expansion)

Satellite Chiller Plant Continuation Funding



Why is the Satellite Chiller Plant Needed?

- The Satellite Chiller Plant on the Modesto A. Maidique Campus (MMC) has been a priority LBR request since 2007-08 because chilled water used to cool buildings is at full capacity with zero redundancy and no emergency generator back-up
- From 2009-10 to 2014-15, Gross Square Feet of buildings has increased from 5.4 million to 8.2 million, an increase of 52 percent
- High cooling need buildings added to MMC from 2009-10 include the College of Nursing (AHC 3), the Science Classroom Building (AHC 4), and the Stempel College of Public Health and Social Work (AHC 5), all focusing on STEM instruction and research labs

How Will the Funds Be Used?

- Continuation funding request of \$7.1 million will allow the build-out of the remaining three chillers and cooling towers and two generators to provide emergency back-up chilled water to essential/critically needed facilities, such as vivarium and labs, in the event of a power outage
- Upon completion of the project, chilling capacity will be sufficient to support new facilities underway and provide some redundancy in the event of a chiller failure

Current and Historical Funding Requests/ Vetoes

• Total Project Cost:	\$16,425,000		
• Funding Received:	\$ 1,110,000	2007-08	Appropriated
	\$ 6,000,000	2008-09	Appropriated
	\$ 2,252,959	2015-16	Appropriated
• Funding Requested/Vetoed:	\$ 7,000,000	2009-10	BOG 3-Year PECO List
	\$ 7,000,000	2010-11	Appropriated/Vetoed
	\$ 6,000,000	2011-12	Appropriated/Vetoed
	\$ 7,000,000	2012-13	BOG 3-Year PECO List
	\$ 7,000,000	2013-14	BOG 3-Year PECO List
• Current Request:	\$ 7,062,041	2016-17	BOG LBR

Project Description

- **Project Size:** 13,200 Gross Square Feet Concrete Facility
- **Architect/Engineer:** SGM Engineering
- **Construction Manager:** Poole and Kent
- **Facility Completion:** February 2013 – Structure
- **Chillers Installed:** 2-1500 Ton Chillers and Cooling Towers
- **Chillers Needed:** 3-1500 Ton Chillers and Cooling Towers
- **Generators Needed:** 2-provides 3000 ton capacity during power outages and emergencies, 365 x 24 x 7 capability

Photographs / Renderings



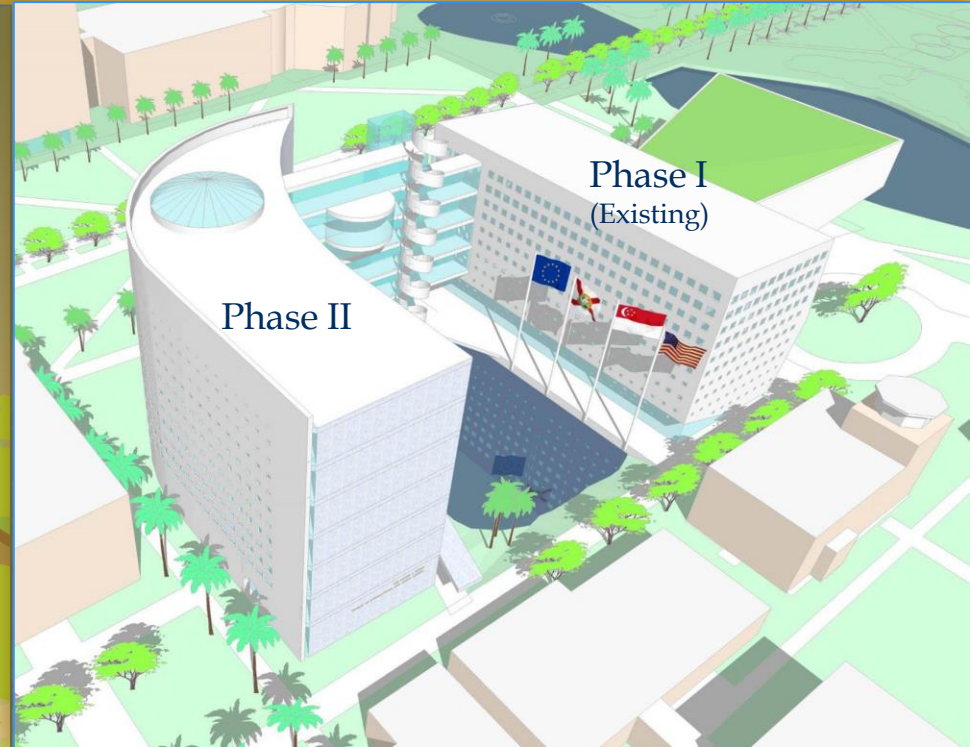
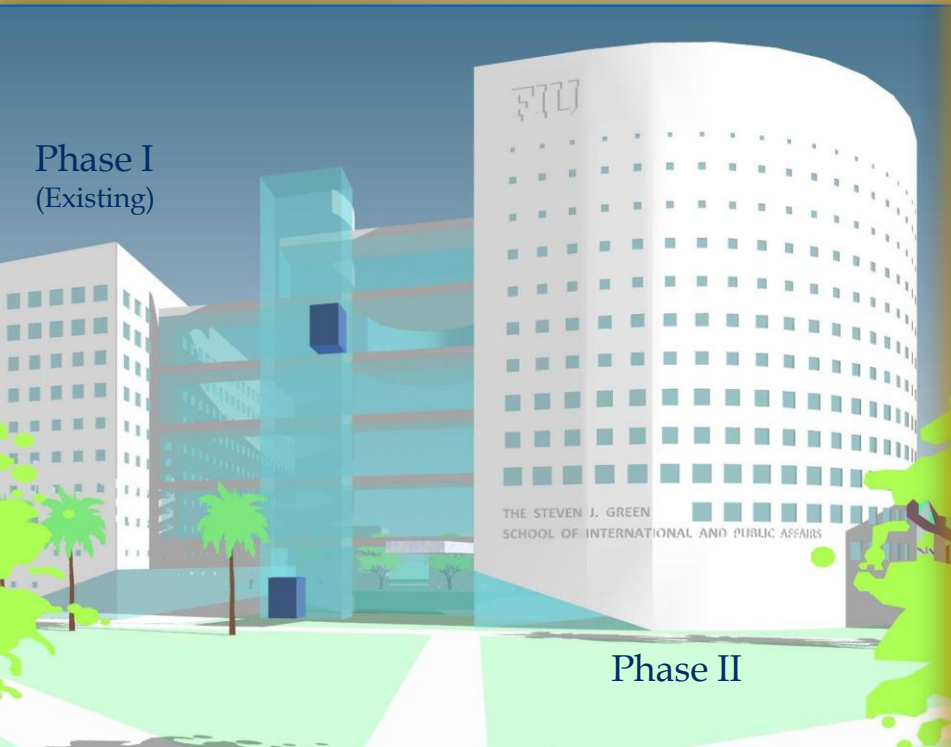
Satellite Chiller Plant Facility Partially Completed February 2013

Photographs / Renderings



Additional Need for 3 Chillers, 3 Cooling Towers and 2 Generators

Steven J. Green School of International and Public Affairs Phase II



Steven J. Green School of International and Public Affairs

- The FIU School of International and Public Affairs (SIPA) aspires to be a globally recognized, top five school of international and public affairs, committed to innovative education with professional programs in global governance, human security, disaster preparedness, risk management and corporate citizenship
- SIPA serves over 6,000 students with nearly 200 full-time faculty members. Its eight departments and 17 interdisciplinary centers, institutes, and programs are scattered throughout campus
- In the Academic Year 2013-14, SIPA awarded 1,867 degrees (1,549 bachelor's, 295 master's, and 23 research doctorates) and 194 undergraduate and graduate certificates.

Why is the SIPA Phase II Building Needed?

- SIPA Phase II will allow six departments and 15 centers to move into one space. Innovation solutions are found between disciplines – clustering multidisciplinary programs will allow students and faculty to better collaborate.
- SIPA Phase II will improve student success. Combined strategy of active learning classrooms, better collaboration space along with ability to house advisors will increase retention (from 75% to 85%) and graduation rates (from 64% to 74%) by 2020.
- SIPA Phase II will allow FIU to Capitalize on job placement in region's growing needs in trained experts to combat serious issues like drug and human trafficking, money laundering and cyber security breaches.
- SIPA Phase II will allow FIU to offer more training to local workforce in disaster mitigation and management as well as expansion of graduate degrees in this area.

Local Economic Development

- SIPA will provide a workforce that is diverse and has linguistic and cultural competence that give Miami and Florida a competitive edge to attract foreign companies in areas such as trade and logistics, manufacturing and innovation, tourism and travel, and investment.
- SIPA will build more relationships with global businesses. There are over 1,100 multi-national companies in South Florida, over 600 of which are from Latin America. Countries wishing to do business in Latin America or Latin American businesses wishing to do business in the United States, choose to set up offices in Miami.
- SIPA's Latin American and Caribbean Center (LACC) is a Title VI grant designated U.S. national resource center for this national strategic priority. Partnering with local economic development organizations, SIPA is a beacon for those wishing to do business in Latin America and the Caribbean.

How Will Students Benefit?

- Expansion would give SIPA the critically needed square footage to unite its students and faculty in an innovative teaching-learning environment
- Collaborative space at SIPA will create an environment most conducive to critical investigation of the biggest challenges facing our community and the world and will allow our students to solve problems in our state
- The new SIPA building will provide students with hands-on policy oriented education opening the door to diverse internship opportunities at the local, state and federal level
- Expansion of career services will ensure our students graduate faster and are employed in high paying jobs with graduates of Public Policy degrees earning \$47,000 to \$81,000 annually (www.payscale.com)

Transformative Gift

- Steven J. Green, along with his wife Dorothea Green, daughter Kimberly Green and the [Green Family Foundation](#), have made a \$20 million gift to help propel the Steven J. Green School of International and Public Affairs forward as one of the world's top academic centers dedicated to international understanding, economic development, peace, disaster management and security.
- \$15 million of the Steven J. Green gift is earmarked to fund the expansion of the School of International and Public Affairs
- Completion of the SIPA Phase II building will greatly enhance the ability to attract additional private dollars through partnerships and philanthropy
- Additional money will be used to attract top faculty with research funding, provide unique internships for our students and better train our students to create and fill the jobs of tomorrow

Regional Beacon with Global Focus

- Greatly enhance SIPA's goal is to achieve full membership in the prestigious Association of Professional Schools of International and Public Affairs (APSIA). APSIA represents the best schools of international and public affairs in the world.
- APSIA designation will provide Florida with the only school of this distinction and only 40 schools of international and public affairs in the world, attracting the best students, faculty and guests to this region.
- Our students enter the workforce in mid-level and leadership positions in NGOs, government agencies, non-profit and for profit organizations specializing in international and public affairs – future leaders and policy makers that have an affinity for Florida.
- Many students also contribute to the community's economy as they start their own companies while still in school and forge strategic partnerships, growing their companies or starting new ones

Project Funding Overview

- **Project Cost:** \$ 30,000,000
- **Funding Received from Private Source:** \$ 15,000,000
- **Funding Requested:** \$ 15,000,000
- **Project Details:**
 - Project Size:** 77,000 Gross Square Feet
 - Architect/Engineer:** To Be Determined
 - Construction Manager:** To Be Determined
 - Facility Completion:** 2017
 - Features:**
 - Faculty Offices
 - Classrooms
 - Language Labs
 - Technology Labs
 - Conference Facilities
 - Negotiation & Mediation Facilities
 - Experiential Teaching Space

Photographs / Renderings



SIPA Phase II