

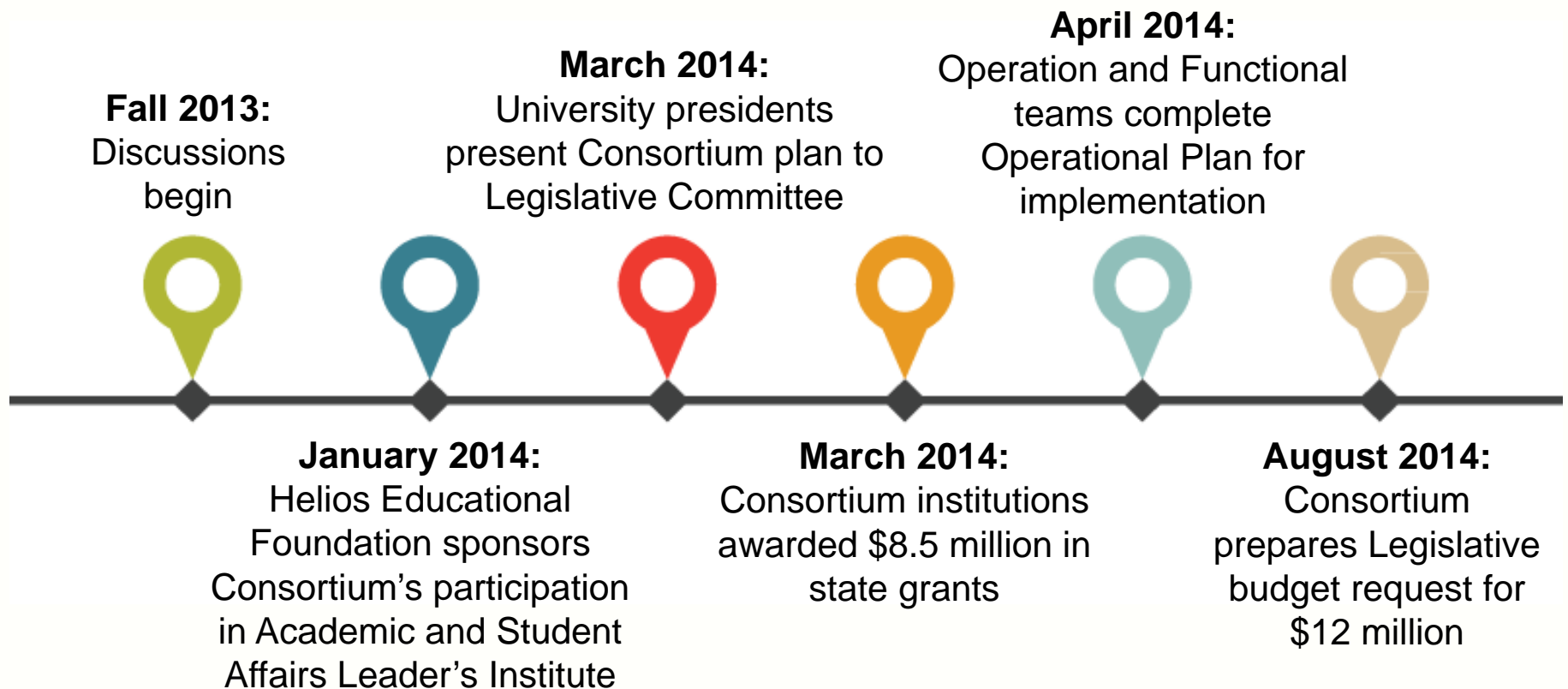


**FLORIDA CONSORTIUM  
OF METROPOLITAN  
RESEARCH UNIVERSITIES**

Florida International University • University of Central Florida • University of South Florida

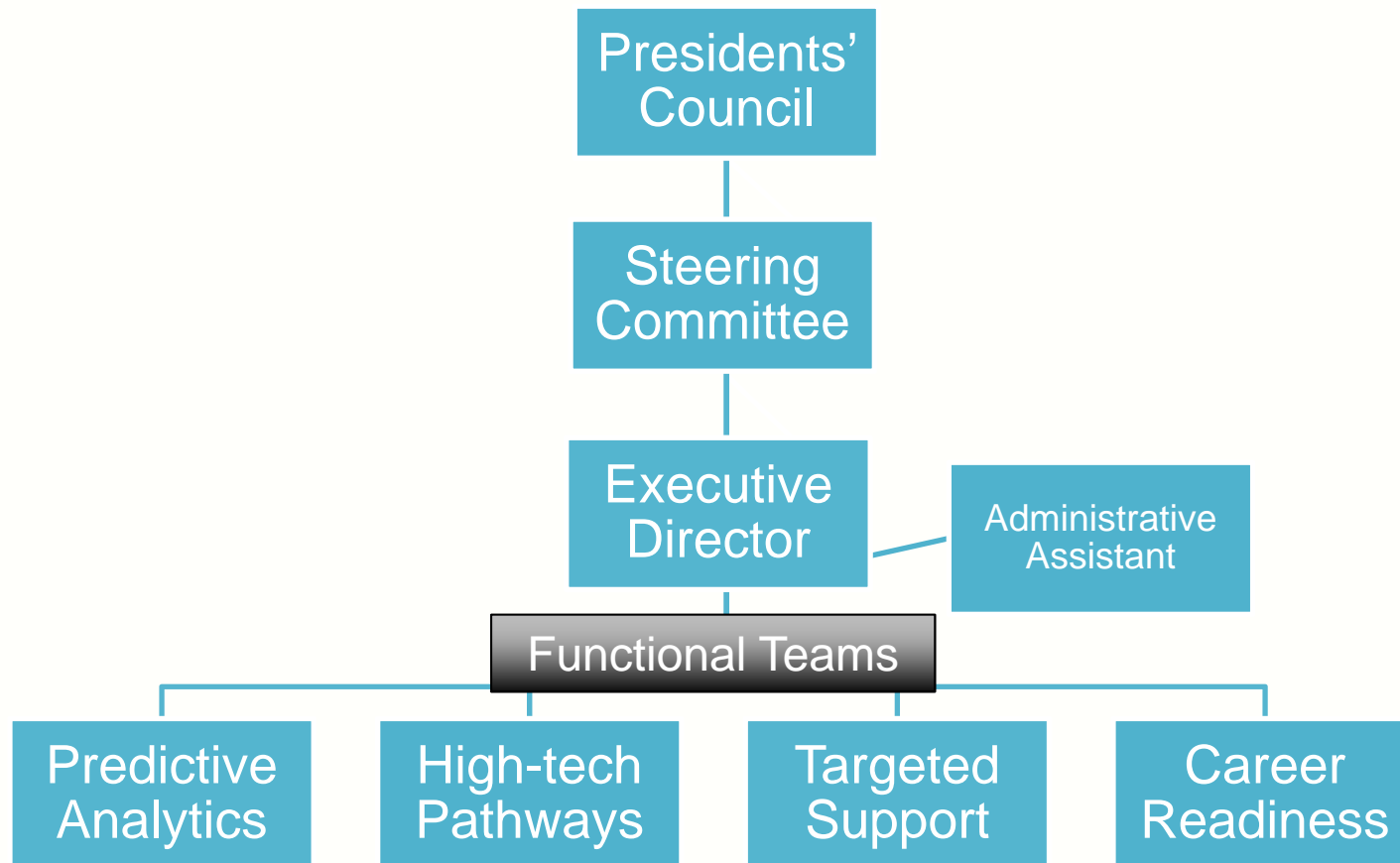


# Work-to-date





# Our structure





# Activities

- Predictive Analytics
- High-tech Pathways
- Targeted Support
- Career Readiness





# Our budget

|                      | FIU                | UCF                | USF                | TOTAL               |
|----------------------|--------------------|--------------------|--------------------|---------------------|
| Predictive Analytics | \$347,188          | \$337,088          | \$339,375          | \$1,023,651         |
| High-tech Pathways   | \$930,763          | \$912,900          | \$921,764          | \$2,765,427         |
| Targeted Support     | \$995,600          | \$993,000          | \$999,000          | \$2,987,600         |
| Career Readiness     | \$1,743,000        | \$1,743,000        | \$1,743,000        | \$5,229,000         |
| <b>TOTAL</b>         | <b>\$4,016,551</b> | <b>\$3,985,988</b> | <b>\$4,003,139</b> | <b>\$12,005,678</b> |

# Our Commitment



- The number of baccalaureate degrees **by 12% (+3,311)**
- The 6-year graduation rate of minority students by 4% (59.8%)
- The number of graduates employed in Florida by 3% (71%)
- The salaries that our graduates earn in the workplace by 10% (\$37,458)

*All projected increases for 2015-16 with funding*