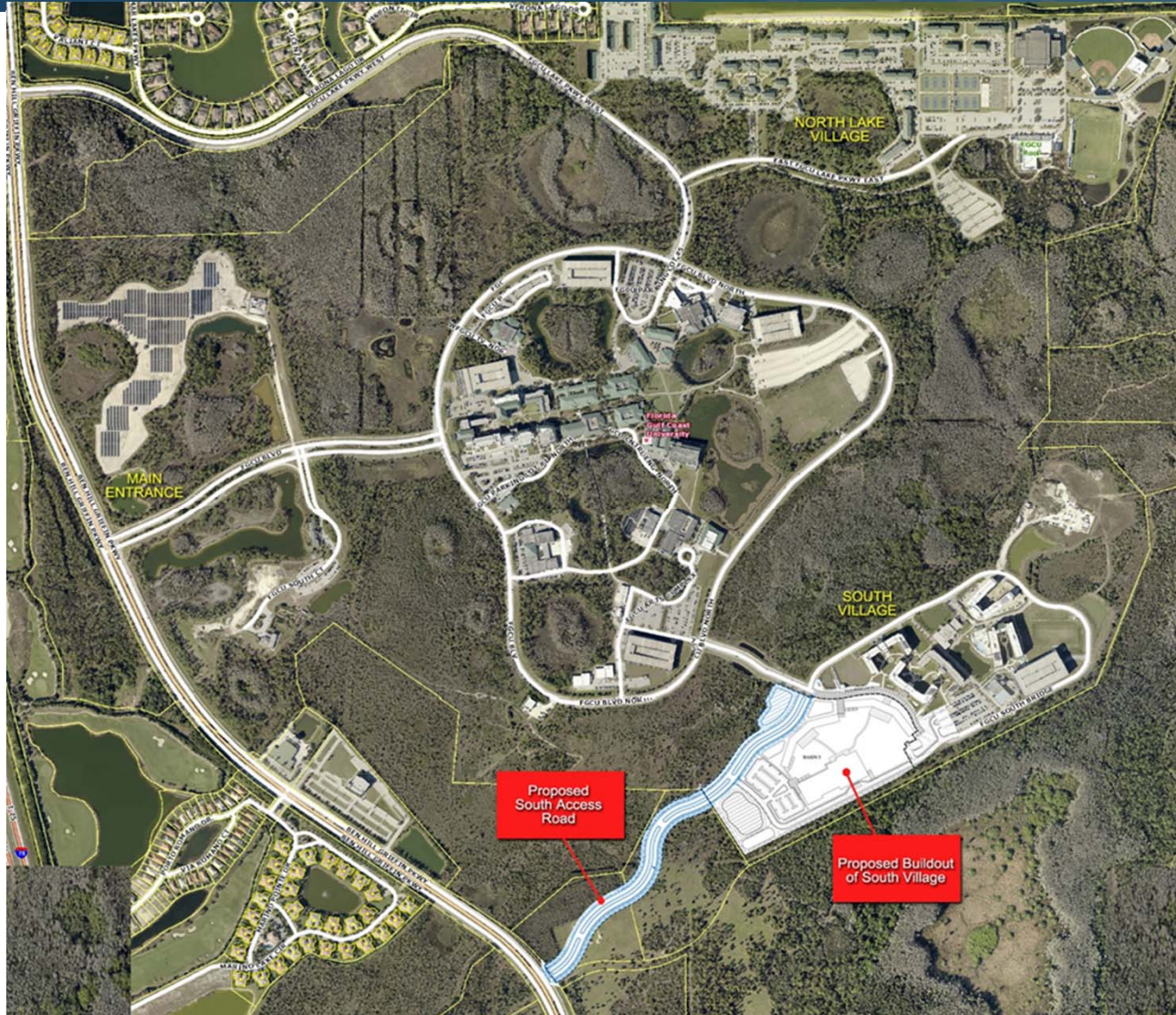




# Florida Gulf Coast University – South Access Road \$4 M





# Florida Gulf Coast University – South Access Road \$4 M





## Florida Gulf Coast University – South Access Road \$4 M

### DEMAND METRICS

- Additional campus evacuation route & emergency first-responder access for high concentration of on-campus student housing
- Student housing population in South Village: 2271 students
- Provides additional infrastructure redundancy for power (FPL), water and sewer (Lee County Utilities), fire protection (Estero Fire Rescue), and data connectivity
- Multi-modal campus access
- Length of access road: 0.53 mile
  
- Anticipated construction start date: December 2015
- Estimated completion date: August 2016



## Florida Gulf Coast University – South Access Road \$4 M

### ROI

- ✓ Added safety for FGCU students, faculty, and staff
- ✓ Provides additional utility services for more stable University operation
- ✓ Supports Public/Private partnerships (P<sup>3</sup>)
- ✓ Supports local businesses
- ✓ Directly connects FGCU students to employment opportunities
- ✓ Directly connects FGCU faculty, staff, and students to affordable housing



## Florida Gulf Coast University – South Access Road \$4 M

### REQUEST

Total project budget:	<u>\$4 M</u>
Appropriated 2013-14	0 M
Appropriated 2014-15	0 M
Request for 2015-16	4 M

Plant Operations and Maintenance (Annual Estimate): \$16,000



# Florida Gulf Coast University – Central Energy Plant Expansion Phase 3 \$9 M





# Florida Gulf Coast University – Central Energy Plant Expansion Phase 3 \$9 M





# Florida Gulf Coast University – Central Energy Plant Expansion Phase 3 \$9 M

## DEMAND METRICS

- Due to the existing plant being at currently capacity, this allows for Academic Building 9 and potential additional buildings
- Increase ice storage capacity by 86 tanks and 17,200 ton hours
- Install chilled water lines from existing plant to Academic Building 9 site at an estimated cost between \$1.5 and \$2 M
- Remainder of facility at an estimated cost of \$7 M
- Anticipated construction start date: August 2015
- Estimated completion date: March 2016





# Florida Gulf Coast University – Central Energy Plant Expansion Phase 3 \$9 M

## ROI

- ✓ Utilizes a **chilled water system** for efficient cooling and reduced energy costs
- ✓ Save energy costs: off-peak energy usage rates with **ice storage tanks**
- ✓ Support Academic Building 9
- ✓ Efficient and sustainable design



# Florida Gulf Coast University – Central Energy Plant Expansion Phase 3 \$9 M

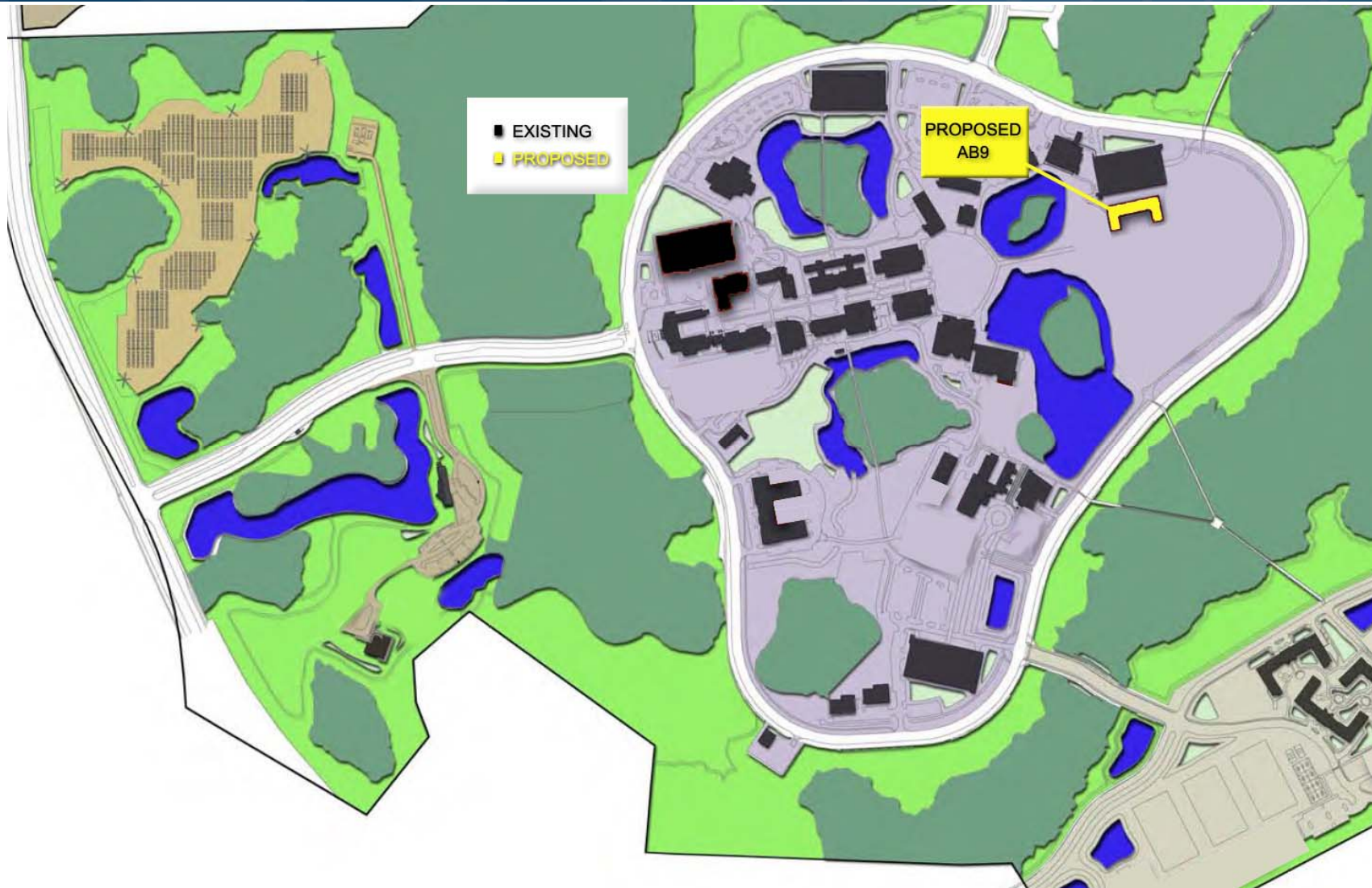
## REQUEST

Total project budget:	<u>\$9 M</u>
Appropriated 2013-14	0 M
Appropriated 2014-15	0 M
Request for 2015-16	9 M

Plant Operations and Maintenance (Annual Estimate): \$0.6 M



# Florida Gulf Coast University – Academic Building 9 - \$44.7 M





# Florida Gulf Coast University – Academic Building 9 - \$44.7 M





# Florida Gulf Coast University – Academic Building 9 - \$44.7 M

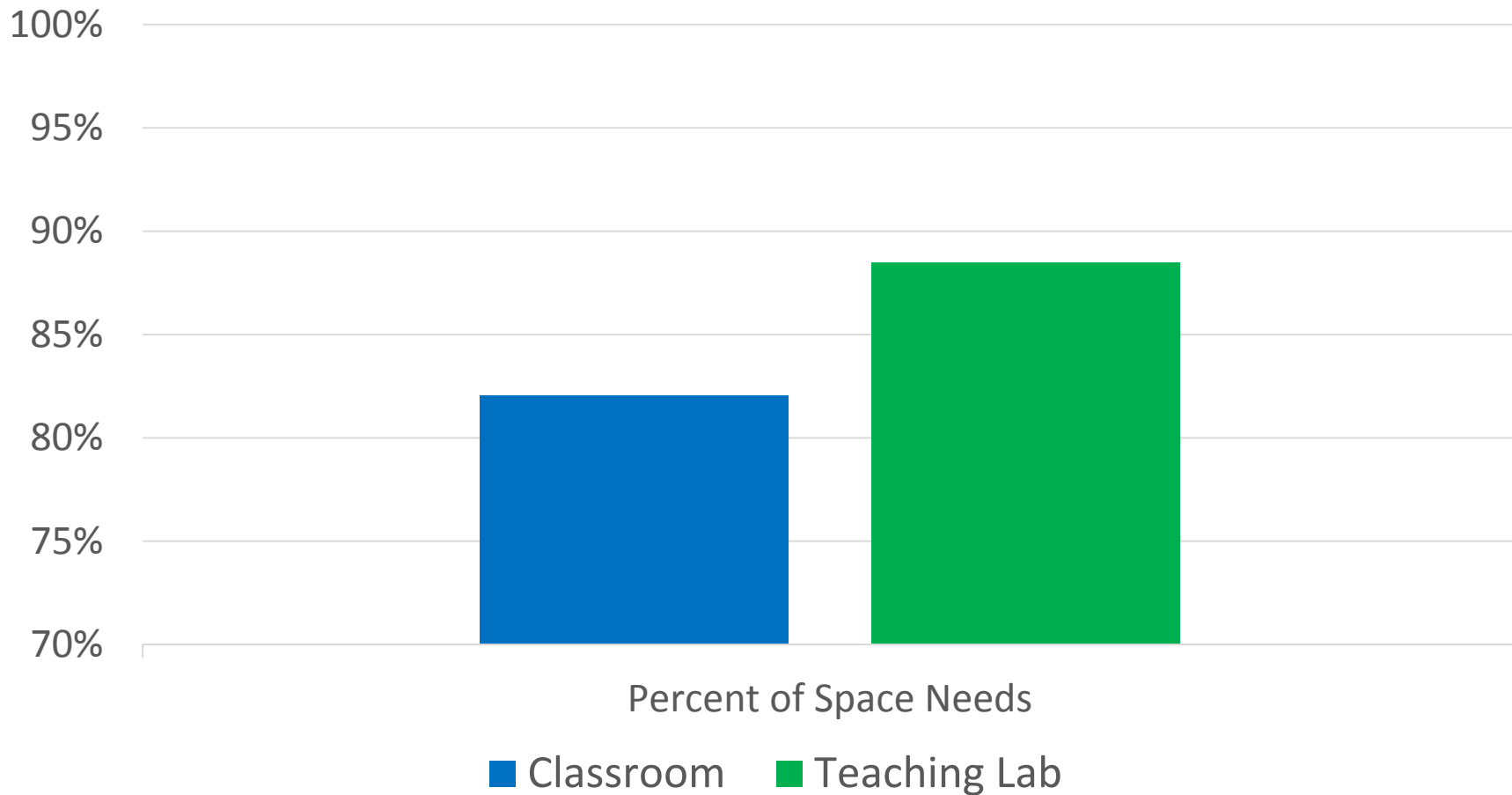
## DEMAND METRICS

- 116,505 gross/77,670 net square feet
- Reduce FGCU current deficit of STEM labs and classroom space
- Promote STEM, critical emphasis area enrollments, and degree production
- Maintain ABET accreditation in engineering
- Obtain ACS accreditation in chemistry
  
- Anticipated construction start date: November 2016
- Estimated completion date: January 2018



# Florida Gulf Coast University – Academic Building 9 - \$44.7 M

## Florida Gulf Coast University Current Form B Need





# Florida Gulf Coast University – Academic Building 9 - \$44.7 M

## DEMAND METRICS

- 116,505 gross/77,670 net square feet
- Reduce FGCU current deficit of STEM labs and classroom space
- Promote STEM, critical emphasis area enrollments, and degree production
- Maintain ABET accreditation in engineering
- Obtain ACS accreditation in chemistry
- Anticipated construction start date: November 2016
- Estimated completion date: January 2018



## Florida Gulf Coast University – Academic Building 9 - \$44.7 M

### ROI

- ✓ The STEM building is essential because it will house “bench” courses and research in the lab sciences which demand hands-on components for learning and scholarly attainment
- ✓ Over the last several years, we have increased our percentage of baccalaureate degrees in programs of strategic emphasis from 31% to 44% as compared to all baccalaureate degrees to provide an educated workforce that drives economic development
- ✓ A new co-op education/internship office will create stronger connections between the world of work and our STEM disciplines, while equipping students with the general and technical skills in greatest demand by corporate and business leaders
- ✓ Academic Building 9 is integral to FGCU maintaining its number one ranking in the state for employment and/or continuing education of our graduates





# Florida Gulf Coast University – Academic Building 9 - \$44.7 M

## REQUEST

Total project budget:	<u>\$44.7 M</u>
Appropriated 2013-14	0 M
Appropriated 2014-15	0 M
Request for 2015-16	3.8 M
Request for 2016-17	36.3 M
Request for 2017-18	4.5 M

Plant Operations and Maintenance (Annual Estimate): \$1.5 M