

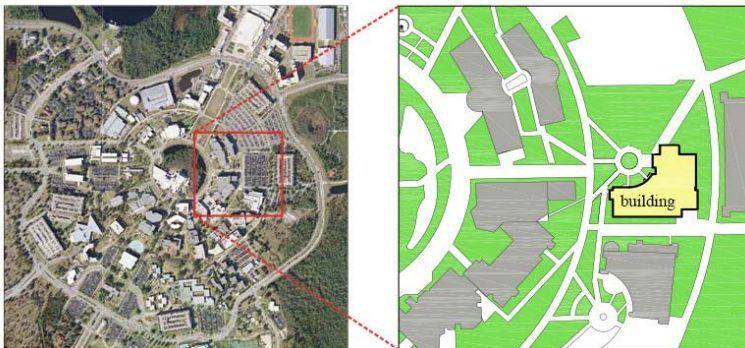


UNIVERSITY OF CENTRAL FLORIDA

UCF – Interdisciplinary Research Facility \$6.1 M



Conceptual Rendering



Site Map



ROI

- ✓ Supports programs with \$26M in external funding and increases research funding by \$20M per year
- ✓ Increases number of Florida STEM graduates 41% (1,000 additional per year over 2,429 in 2013/14)
- ✓ Provides economic impact to local economy
 - **Year 1:** \$10,800,274 46 construction jobs, 35 other sectors
 - **Year 2:** \$61,715,839 262 construction jobs, 202 other sectors
 - **Year 3:** \$10,800,274 46 construction jobs, 35 other sectors
 - Business incubator impact to the region of more than \$2.5 billion in first 15 years
 - Creates thousands of jobs from incubator program, with salaries averaging \$67,541
- ✓ Enables UCF to continue to excel in patent production (ranked 9th in nation for new patents produced in 2012). Each \$1M in research funding produces approximately one new patent per year
- ✓ Supports UCF's ranking as a "very high research activity" University by the Carnegie Foundation
- ✓ Over 150 current incubator clients and more than 100 companies have graduated
- ✓ Incubator companies currently account for 3,698 jobs in Central Florida



DEMAND METRICS

- ✓ Supports programs in nano-science technology, advanced materials processing and analysis, optics and lasers, energy research, and the incubator program
- ✓ Creates 27 research labs, 19 material characterization rooms, 21 incubator labs, lecture halls, conference rooms, offices, and ancillary spaces
- ✓ Positions UCF for large research projects and partnerships
- ✓ Provides critically needed space to support research activities; UCF's 407,000 net assignable research square feet is **one-half** the space needed, as calculated by the state's formula
- ✓ Building size: 118,014 gsf – new space will compensate for 20% of the space deficit
- ✓ Anticipated construction start date: April 2016
- ✓ Anticipated completion date: October 2017



UNIVERSITY OF CENTRAL FLORIDA

UCF – Interdisciplinary Research Facility \$6.1 M

REQUEST

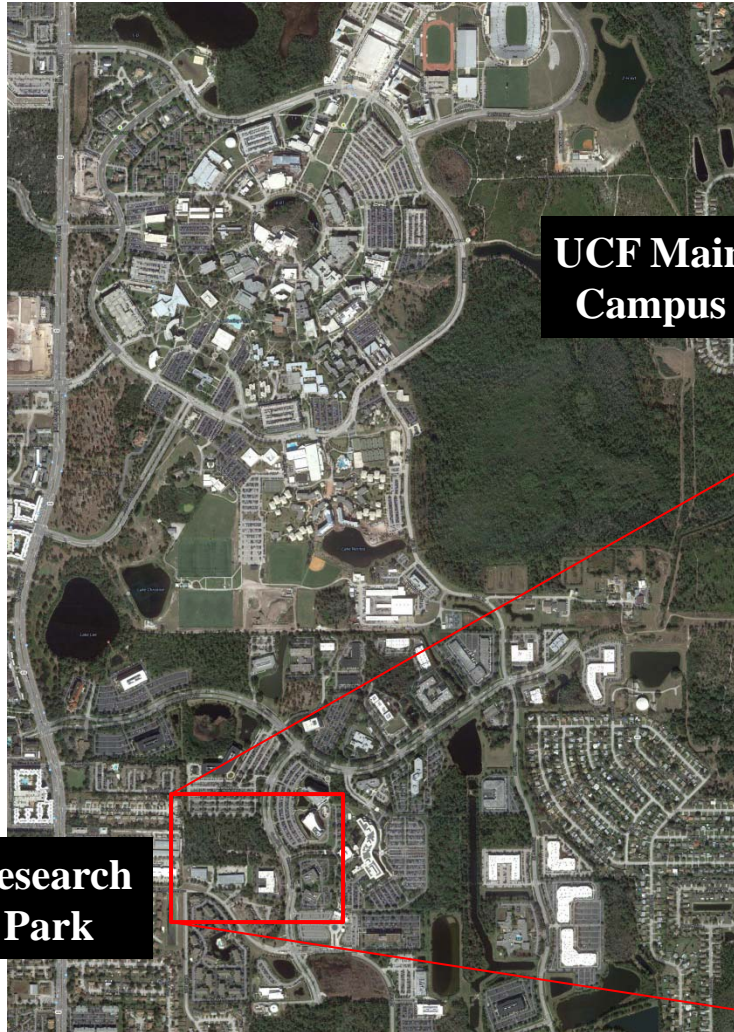
<u>Total project budget:</u>	\$46,614,853
Request for 2015-2016	\$6,042,667
Request for 2016-2017	\$34,529,519
Request for 2017-2018	\$6,042,667

Plant Operations and Maintenance (Annual Estimate): \$1,632,900



UNIVERSITY OF CENTRAL FLORIDA

UCF – Partnership IV \$46.9 M



**UCF Main
Campus**

**Research
Park**





ROI

- ✓ Supports UCF's state charter as the Center of Excellence in Simulation and Training
- ✓ Enhances UCF - DOD partnership for Simulation and Training
- ✓ Lessens the likelihood of Base Realignment and Closure (BRAC) action
- ✓ Increases economic impact to local economy
 - **Year 1:** \$83,861,787 355 construction jobs, 276 other sectors
 - **Year 2:** \$10,938,494 46 construction jobs, 36 other sectors



ROI

- ✓ Modeling, Simulation and Training (MS&T) economic impact:
 - More than \$4.8B to Florida's Gross State Product
 - Nearly \$8.0B in state sales (economic output) activity
 - 1,000+ Florida companies and organizations involved
 - Direct employment in the sector of more than 27,000 Floridians
 - Approximate average annual salary of \$69,797

- ✓ Research Park economic impact:
 - Average salary \$82,000+
 - 2,800 military and civilian personnel in MS&T

- ✓ Florida employment impact: 60,700 jobs (direct, indirect, induced)



DEMAND METRICS

- ✓ Creates classified labs for both the Military and UCF
- ✓ Satisfies the demand from local MS&T employers for UCF students trained in advanced technologies
- ✓ Eliminates costly leases that could drive BRAC decisions
- ✓ Provides space in Research Park to support Army and Air Force presence and potential growth
- ✓ Avoids potential loss of strategic national programs and dollars to the region and to the state
- ✓ Building sizes:
 - Technology 1 – 31,520 gsf (existing building to be acquired)
 - Technology 2 – 30,828 gsf (existing building to be acquired)
 - New Development – 167,000 gsf
- ✓ Anticipated construction start date: December 2015
- ✓ Anticipated completion date: June 2017



UNIVERSITY OF CENTRAL FLORIDA

UCF – Partnership IV \$46.9 M

REQUEST

<u>Total project budget:</u>	<u>\$53,040,000</u>
Prior Funding	\$8,000,000
Request for 2015-2016	\$46,920,000
Request for 2016-2017	\$6,120,000

Plant Operations and Maintenance (Annual Estimate): \$2,505,000



UNIVERSITY OF CENTRAL FLORIDA

UCF – Downtown Presence \$57.8 M





UNIVERSITY OF CENTRAL FLORIDA

UCF – Downtown Presence \$57.8 M

CREATIVE VILLAGE

- ✓ Approximately 65 acres, comprising the old Amway Arena site, Bob Carr Theater, and the UCF Center for Emerging Media
- ✓ City Task Force calls for a “Work, Learn, Play” development, with Education as a key anchor
- ✓ A high-energy visualization arts, communications, and service learning hub that will serve UCF and the community



before



after



UNIVERSITY OF CENTRAL FLORIDA

UCF – Downtown Presence \$57.8 M

ROI

- ✓ Changes the complexion and vibrancy of the downtown area, with a large University presence; increases economic activity for the City of Orlando
- ✓ Further strengthens Orlando as a high tech digital media destination; the City's existing digital media companies already make up one of the top ten digital media clusters in the United States
- ✓ Embeds UCF into the Orlando community, as thousands of students will live and study in the district
- ✓ Enriches our successful partnership with Valencia College, as they will bring complimentary programs to the downtown site
- ✓ Creates opportunities for small business development in support of the new student population
- ✓ Compares to the University of Buffalo Gates Vascular Institute, which generated \$68.5M per year in economic impact and 700 new permanent jobs





ROI

- ✓ Promotes “next generation” industries other than tourism to create a more diverse and dynamic economy to ensure the City of Orlando’s long-term health
- ✓ Supports an economically depressed, low-income neighborhood through targeted redevelopment activities
- ✓ Creative Village’s economic impact to local economy
 - Generates more than \$10M in annual property tax revenue to support City services
 - Creates more than 8,000 permanent and related jobs
 - Represents \$800M - \$1B in full build-out of new development
 - Produces \$296M annually in post-construction local economy earnings
- ✓ UCF’s economic impact to local economy
 - **Year 1:** \$103,218,631 437 construction jobs, 340 other sectors
 - **Year 2:** \$138,906,943 589 construction jobs, 456 other sectors
 - **Year 3:** \$51,890,821 220 construction jobs, 171 other sectors
 - **Year 4:** \$75,362,738 319 construction jobs, 248 other sectors



UNIVERSITY OF CENTRAL FLORIDA

UCF – Downtown Presence \$57.8 M

DEMAND METRICS

- ✓ Full-service campus for UCF, comprising 22 of 65 total acres (1/3 of development)
- ✓ Five year projection: 7,000 to 10,000 UCF students and 2,000 Valencia students
- ✓ Academic departments near the businesses that students want to join after graduation
- ✓ Tuition waivers for low-income, local Community School students
- ✓ Public affairs embedded in the community
- ✓ Enhancement of existing downtown Orlando electronic arts and media industry and education



before



after



UNIVERSITY OF CENTRAL FLORIDA

UCF – Downtown Presence \$57.8 M

REQUEST

<u>Total project budget:</u>	\$206,664,675
Request for 2015-2016	\$57,750,000
Request for 2016-2017	\$77,717,325
Request for 2017-2018	\$29,032,500
Request for 2018-2019	\$42,164,850

Plant Operations and Maintenance (Annual Estimate): \$4,098,150



UNIVERSITY OF CENTRAL FLORIDA

UCF – Colbourn Hall Renovation \$2.0 M





UNIVERSITY OF CENTRAL FLORIDA

UCF – Colbourn Hall Renovation \$2.0 M

ROI

- ✓ Prevents costly, stop-gap repair measures to antiquated building systems
- ✓ Prevents the need to demolish the building and displace hundreds of building occupants
- ✓ Provides long-term energy efficiency
- ✓ Increases economic impact to local economy
 - **Year 1:** \$3,489,692 15 construction jobs, 11 other sectors
 - **Year 2:** \$27,917,544 118 construction jobs, 92 other sectors
 - **Year 3:** \$3,489,692 15 construction jobs, 11 other sectors



towers



tower waterproofing – deteriorating and not consistently applied, no vapor barrier, no insulation



UNIVERSITY OF CENTRAL FLORIDA

UCF – Colbourn Hall Renovation \$2.0 M

DEMAND METRICS

- ✓ Extends the useful life of an iconic, 40 year old, 84,000 gsf, structure
- ✓ Independent study identified:
 - Structural defects
 - Water intrusion issues
 - Mechanical systems past life-span
 - Life Safety deficiencies
 - Building needs to be gutted to structure and rebuilt to current building codes
- ✓ Remediates structural concerns and failing building systems, which are forcing the relocation of existing faculty
- ✓ Allows housing new faculty lines that are being hired from performance funding , resulting in an improved faculty to staff ratio, from 32:1 to 28:1
- ✓ Anticipated construction start date: May 2016
- ✓ Anticipated completion date: August 2017



main building



deteriorating substrate, flashing,
no insulation, no vapor barrier



UNIVERSITY OF CENTRAL FLORIDA

UCF – Colbourn Hall Renovation \$2.0 M

EXISTING MECHANICAL SYSTEMS





UNIVERSITY OF CENTRAL FLORIDA

UCF – Colbourn Hall Renovation \$2.0 M

REQUEST

<u>Total project budget:</u>	\$19,524,553
Request for 2015-2016	\$1,952,455
Request for 2016-2017	\$15,619,643
Request for 2017-2018	\$1,952,455



UNIVERSITY OF CENTRAL FLORIDA

UCF – Engineering Building I \$13.9M





UNIVERSITY OF CENTRAL FLORIDA

UCF – Engineering Building I \$13.9M

ROI

- ✓ Prevents costly, stop-gap repair measures to antiquated building systems
- ✓ Provides long-term energy efficiency
- ✓ Allows UCF to continue producing 1,535 Florida STEM graduates per year in Engineering
- ✓ Increases annual research expenditures by \$700,000 (13% increase over current amounts)
- ✓ Increases economic impact to local economy
 - **Year 1:** \$24,940,976 106 construction jobs, 82 other sectors
 - **Year 2:** \$1,653,285 7 construction jobs, 5 other sectors





DEMAND METRICS

- ✓ Extends the life of a 29 year old building to support world-class engineering programs
- ✓ Houses the preeminent College of Engineering and Computer Science, with 7,554 undergraduate students and 1,327 graduate students: the largest in Florida and the 9th largest in the nation
- ✓ Independent study identified:
 - Mechanical systems past life-span
 - Building needs to be upgraded to meet current building codes
- ✓ Creates and upgrades classrooms, instructional and research labs, clean rooms, and ancillary spaces
- ✓ Building size: 130,885 gsf
- ✓ Anticipated construction start date: December 2015
- ✓ Anticipated completion date: August 2017





UNIVERSITY OF CENTRAL FLORIDA

UCF – Engineering Building I \$13.9M





UNIVERSITY OF CENTRAL FLORIDA

UCF – Engineering Building I \$13.9M

REQUEST

<u>Total project budget:</u>	<u>\$18,500,000</u>
Prior Funding	\$3,620,723
Request for 2015-2016	\$13,954,277
Request for 2016-2017	\$925,000



UNIVERSITY OF CENTRAL FLORIDA

UCF – Mathematical Sciences \$9.4M





UNIVERSITY OF CENTRAL FLORIDA

UCF – Mathematical Sciences \$9.4M

ROI

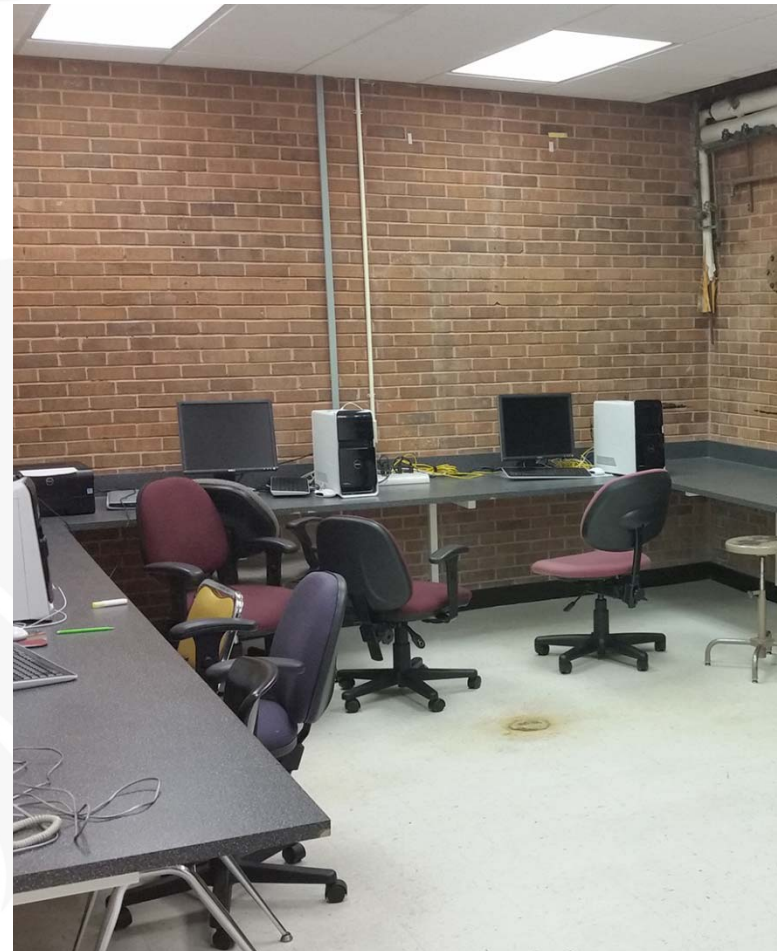
- ✓ Prevents costly, stop-gap repair measures to antiquated building systems
- ✓ Provides long-term energy efficiency
- ✓ Allows UCF to continue producing over 7,500 Florida STEM graduates per year in Mathematical Sciences
- ✓ Increases economic impact to local economy
 - Year 1:** \$16,840,464 71 construction jobs, 56 other sectors
 - Year 2:** \$1,251,135 5 construction jobs, 4 other sectors





DEMAND METRICS

- ✓ Extends the useful life of this 44 year old building
- ✓ Provides classroom and labs for 15,787 students annually for Mathematics and Sciences
- ✓ Independent study identified:
 - Mechanical systems past life-span
 - Building needs to be upgraded to meet current building codes
- ✓ Creates and upgrades classrooms, teaching labs, research labs, study rooms, and ancillary spaces
- ✓ Building size: 106,523 gsf
- ✓ Anticipated construction start date: December 2015
- ✓ Anticipated completion date: August 2017





UNIVERSITY OF CENTRAL FLORIDA

UCF – Mathematical Sciences \$9.4M





UNIVERSITY OF CENTRAL FLORIDA

UCF – Mathematical Sciences \$9.4M

REQUEST

<u>Total project budget:</u>	<u>\$14,000,000</u>
Prior Funding	\$3,877,895
Request for 2015-2016	\$9,422,105
Request for 2016-2017	\$700,000