

The background of the slide is a dark purple color with a subtle, repeating pattern of interconnected dots and lines, resembling a molecular or network structure. The text is white and centered.

FLORIDA --- POLYTECHNIC UNIVERSITY

Update for the Select Committee

Randy K. Avent
17 September 2014

pivot



- **Raised \$3.6M for scholarships**

LAUNCH



- **Governor Rick Scott**
- **Commissioner Putnam**
- **Honorable J.D. Alexander**
- **Representative Seth McKeel**
- **Governor Wendy Link**

**FLORIDA
POLY**

Opening Week



“The only surprise was there were no surprises”

Overview

- Introduction
- **By the numbers**
- **Infrastructure**
- **Summary**

Inaugural Class

- **Student enrollment**
 - Total Headcount = **554**
 - Undergraduate = **528**
 - Graduate = **26**
- **Demographics**
 - **97%** from Florida
 - **71%** First Time In College (FTIC)
 - **66%** prefer on-campus housing (**44%** live on campus)
 - **84%** male, **80%** white
- **Inquiries for 2015**
 - Class of 2015 = **12,384**
 - Class of 2016 = **7,594**
 - Class of 2017 = **2,403**

Enrollment

	DEPARTMENT	STUDENTS	FACULTY
ENGINEERING	COMPUTER ENGINEERING	78	1
	ELECTRICAL ENGINEERING	70	2
	MECHANICAL & INDUSTRIAL ENGINEERING	124	3
	GRADUATE	8	3
INNOVATION & TECHNOLOGY	ADVANCED TECHNOLOGY	32	2
	TECHNOLOGY MANAGEMENT	15	3
	COMPUTER SCIENCE	185	1
	GRADUATE	16	5
	GENERAL EDUCATION		32

- 129 of the 231 active courses offered this fall semester
- Average class size is 24

Overview

- Introduction
- By the numbers
- **Infrastructure**
- **Summary**

Bricks and Mortar

Innovation, Science & Technology



- **Classroom capacity 2,625**
- **Laboratories**
- **Office Space**

Housing



- **241 Students**

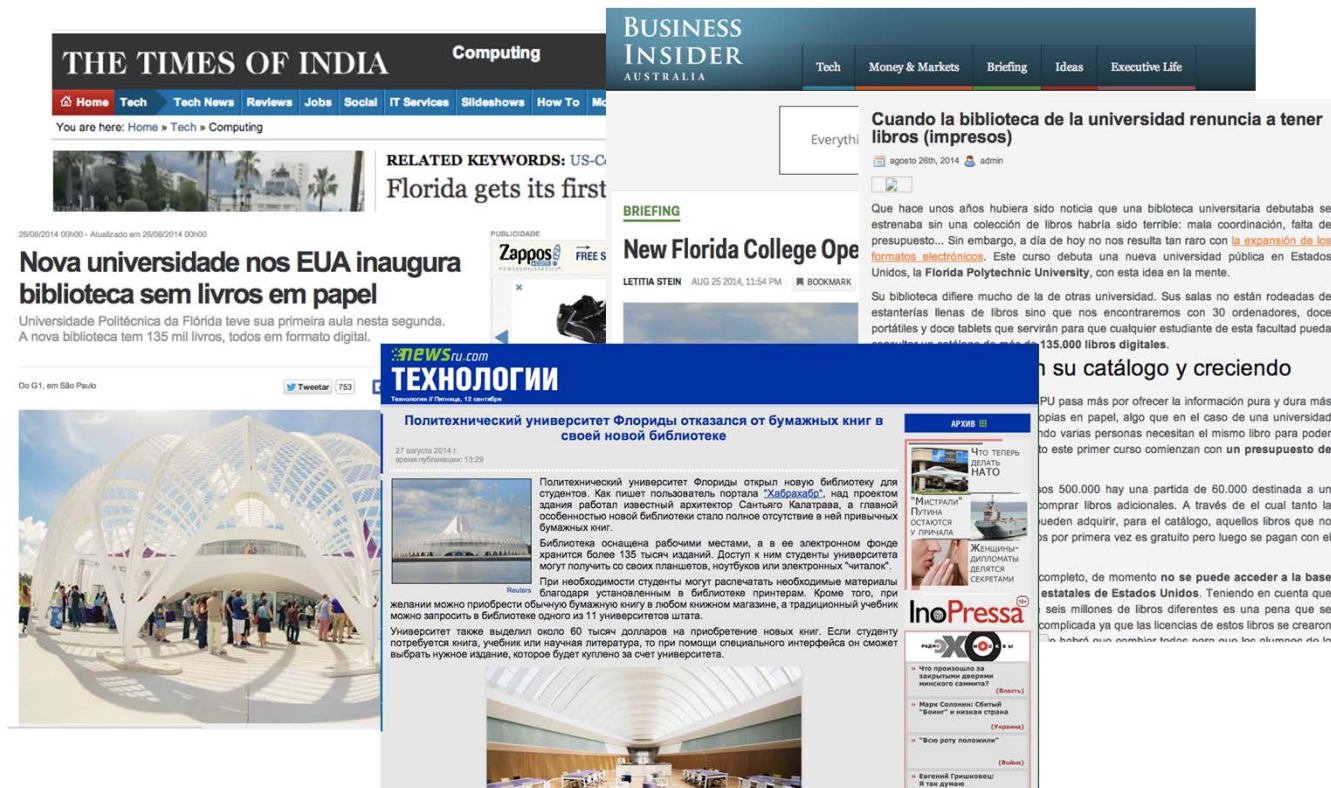
Wellness Center



- **Cafeteria**
- **Health Clinic**
- **Bookstore**
- **Gym**
- **Student Services**

Five-Year Capital Improvement

- **Applied Research Center**
- **Student Achievement Center**
- **Faculty/Staff Office Building**
- **Housing Units (~1100 beds)**

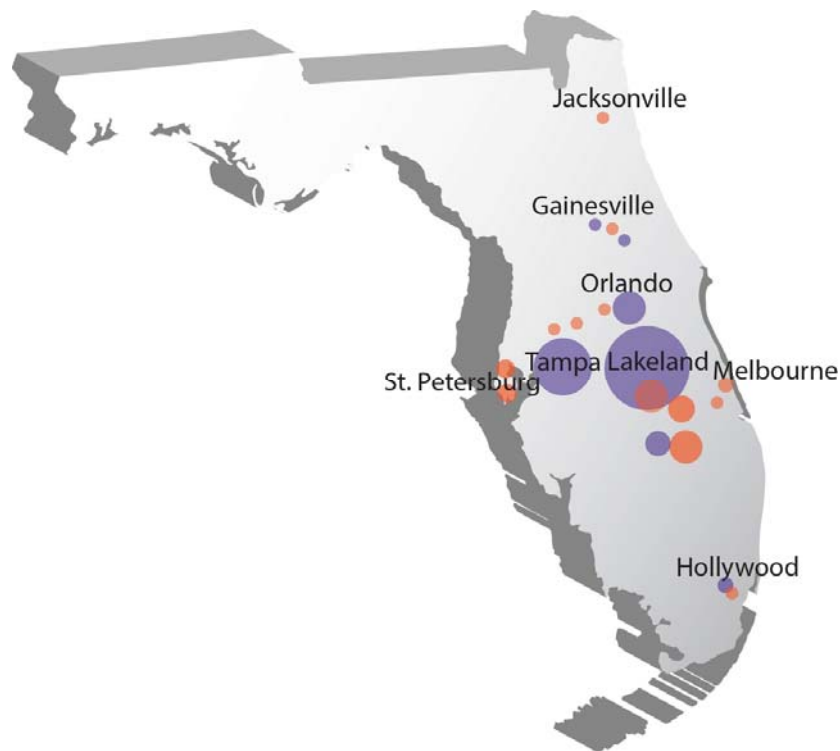


- Personalized libraries for all students and faculty
- Library & research skills taught to all students
- Academic Success Center

- **Student Research (RFPs)**
 - Energy harvesting for backpacking
 - Full capacity WiFi environment
 - Robust materials for unattended outdoor sensor housing
 - Acoustic management of malechoic architecture
 - Conversational user interface
 - Patient knowledge enhancement system
- **National competitions**
 - Pumpkin Chunkin
 - Rube Goldberg Machine Contest
- **Faculty Research Centers**
 - Health Care Informatics
 - Context-based Decision Support
 - Role of core STEM in Catalyzing Economic Development

Industry Partnerships

- Total industry partnerships = **76**
- Florida industry partnerships = **63**



- Advocacy = **76**
- Internships = **68**
- Advisory Board = **41**
- Sponsored R&D = **23**
- Joint Teaching = **19**
- Foundation = **18**

**Industry Partner Summit 2.0 scheduled for
February 26, 2015**

Business Units

- **Administrative**

- Construction & Facilities
- Campus Police
- Business Services
- Information Technology
- Library
- Industry Partnerships
- Communications & Marketing
- Finance
- General Counsel
- Programs & Curriculum
- External Relations
- Advancement
- Government Relations
- Ombudsperson
- Institutional Research
- Registrar
- Enrollment Services
- Financial Aid
- Student Affairs
- Human Resources

- **Academic**

- College of Innovation & Technology
- College of Engineering
- FIPR
- Computer Engineering
- Electrical Engineering
- Mechanical & Industrial Engineering
- Advanced Technology
- Science & Technology Management
- Computer Science
- Graduate Engineering
- Graduate Innovation Technology




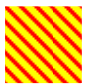


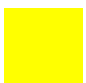
- **Shared Services**

- Resident Life
- Payroll/Benefits
- Purchasing
- Fiscal Systems
- Bookstore
- Dining Services

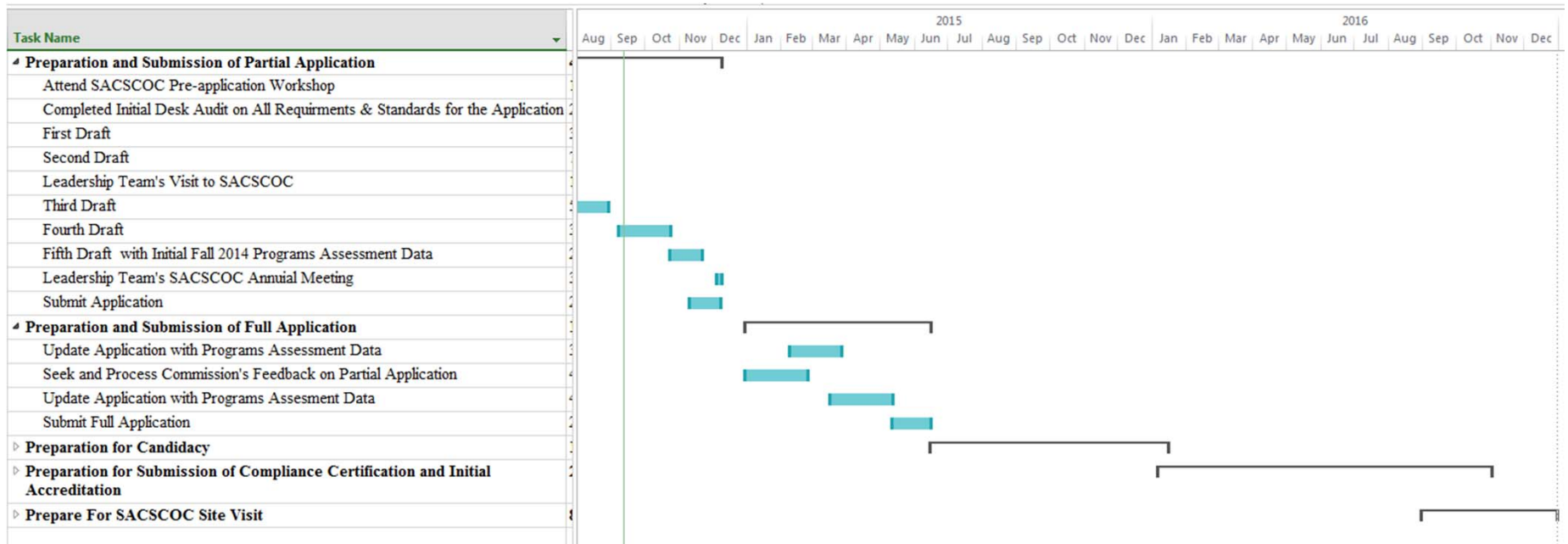
Overview

- Introduction
- By the numbers
- Infrastructure
- **Summary**

Statutory Requirements

CRITERIA	ISSUES	COMPLETED	PROGRESS
STEM ACADEMIC PROGRAMS	5	5	
STUDENT ENROLLMENT	4	2	
ADMINISTRATIVE CAPABILITY	2	2	
ACCREDITATION	5	1	
DISCIPLINE SPECIFIC ACCREDITATION	1		
FACILITIES & CONSTRUCTION	3	2	
TOTAL	20	12	

Regional Accreditation



- **Regional Accreditation**
 - Anticipated application submission December 2014
 - Anticipated Accreditation decision December 2016
 - Strong working relationship with an advisor to stay on schedule
- **Discipline-specific Accreditation not yet applicable**

Summary

- **Become regionally and nationally recognized for STEM education**
- **Achieve projected student enrollment by developing responsive programs and services**
- **Build infrastructure that inspires technology-rich environments for innovation**
- **Create campus environment that nurtures collaborative research, learning and economic outreach**
- **Establish sound financial growth, stability and administrative practices**