



**Herbert Wertheim
College of Medicine**

**Green Family Foundation
NeighborhoodHELP™**

**Beyond Traditional Medical Education
Preparing Students for the
Realities of the Future**

John A. Rock, M.D.
FOUNDING DEAN AND
SENIOR VICE PRESIDENT FOR HEALTH AFFAIRS

BACKGROUND

Created in 2007 to:



Address community healthcare challenges by educating physicians to be socially responsible and expertly trained



Prepare physicians for the new millennium where a national and regional physician shortage is projected

Curriculum

Five thematic integrated strands in four years of study:

Human Biology
(Core sciences)

Disease, Illness and Injury
(Pathology)

Clinical Medicine
(Doctor-patient communication, physical exam)

Professional Development

Medicine and Society

Medicine and Society Strand

Period I:	Ethical Foundation	Socio-Economic and Cultural Aspects	Interdisciplinary Professional Approaches
Period II:	Community Engaged Physician I		
Period III:	Community Engaged Physician II	Family Medicine Clerkships	
Period IV:	Community Engaged Physician III	Community Medicine Practicum	

THE WHY

An **obligation to address health concerns**, which consists of seven competencies:

Medical Knowledge

Patient Care

Interpersonal Communication Skills

Professional Development

System-Based Practice

Practice-Based Learning and Improvement

Social Responsibility



THE How

Designed a new structure and education model

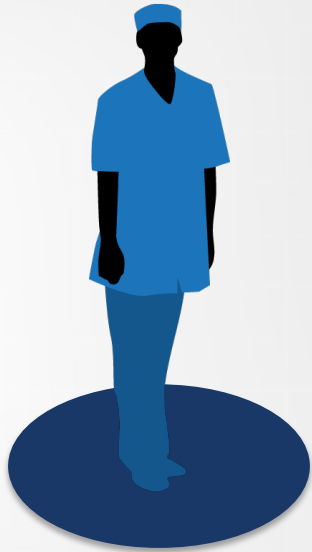
Green Family Foundation NeighborhoodHELP™:

A community-based medical education program woven throughout the curriculum that trains 21st century health professionals and addresses health needs

Panther Learning Communities:

An educational and social structure that promotes a sense of community and unity within the medical school environment

Educational Objectives:



Interdisciplinary teams connect to a household in the community for hands on learning about



- > **SOCIAL DETERMINANTS OF HEALTH**
- > **CULTURAL DIVERSITY**
- > **INTERDISCIPLINARY TEAM SKILLS**
- > **COMPREHENSIVE APPROACH TO HEALTH ISSUES**
- > **FRAMEWORK TO MANAGE ETHICAL ISSUES**



Develop socially responsible, community engaged physicians and healthcare professionals

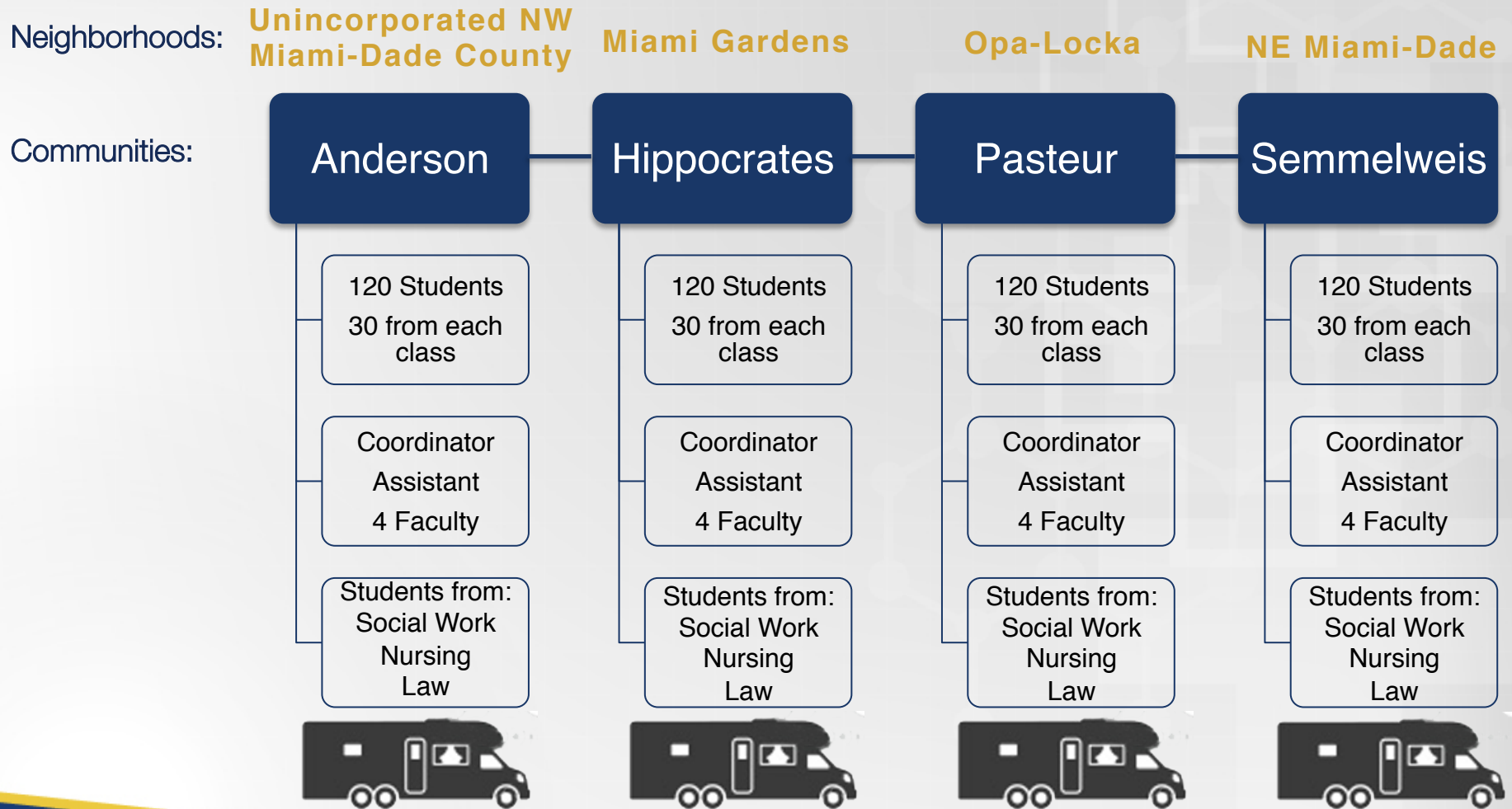
WHAT IS NEIGHBORHOODHELP?

An interdisciplinary health education learning model that:

- ✓ Educates future physicians while engaging them with the community
- ✓ Provides services to medically underserved communities
- ✓ Exposes students to social determinants of health
- ✓ Brings together teams of medical, nursing, social work and law students
- ✓ Develops collaborative solutions with the community and university partners
- ✓ Is long-term and sustainable, not episodic
- ✓ Is a signature program in the Medicine and Society strand of the curriculum



PANTHER LEARNING COMMUNITIES



THE Impact

September 2010 – June 2014, 677 FIU medical, social, nursing, and law students conducted **3,255 visits** to **512 households** with **1202 household members**

Data showed a **decrease** in the use of **emergency room visits** as a regular place of care for household members, from **61% to 26%**

In a study completed by Trip-Umbach over the last two years, it was estimated that for **every dollar invested** in NeighborhoodHELP, the **state receives eight dollars in return**



THE FUTURE

An innovative curriculum that
prepares medical students to
lead the delivery of healthcare in
the new millennium and
simultaneously improves health
outcomes in communities
and families

INTEGRATING MEDICAL EDUCATION AND HEALTHCARE DELIVERY



Leverage what
we have
learned to



- > EDUCATE FUTURE HEALTH PROFESSIONALS
- > IMPLEMENT INTERDISCIPLINARY HOUSEHOLD-CENTERED CARE
- > INTEGRATE WITH COMMUNITY-BASED SERVICES
- > IMPROVE HEALTH OUTCOMES
- > LOWER HEALTHCARE COSTS
- > INCREASE PATIENT SATISFACTION



Develop a new
health care delivery
model that carves
the path to the 21st
century



**Herbert Wertheim
College of Medicine**

**Green Family Foundation
NeighborhoodHELP™**

**Beyond Traditional Medical Education
Preparing Students for the
Realities of the Future**

John A. Rock, M.D.
FOUNDING DEAN AND
SENIOR VICE PRESIDENT FOR HEALTH AFFAIRS