



STATE
UNIVERSITY
SYSTEM
of FLORIDA
Board of Governors

Innovation and Online Committee
Agenda and Meeting Materials
May 8, 2014

Cohen Center Ballroom
Florida Gulf Coast University
10501 FGCU Boulevard South
Ft. Myers, Florida 33965



ACTIVITIES

BOARD OF GOVERNORS MEETINGS

**Cohen Center Ballroom
Florida Gulf Coast University
10501 FGCU Boulevard South
Ft. Myers, Florida 33965
May 8, 2014**

**By Telephone Conference Call
Dial-in Number: 888-670-3525
Participant Code: 4122150353# (listen only)**

Thursday, May 8, 2014

8:30 a.m. - 4:00 p.m.	Innovation and Online Committee Chair: Mr. Ned Lautenbach; Vice Chair: Mr. Ed Morton Members: Beard, Chopra, Colson, Kuntz, Link, Stewart, Tripp
----------------------------------	---

Please note that this schedule may change at the Chair's privilege.



AGENDA
Innovation and Online Committee
Cohen Center Ballroom
Florida Gulf Coast University
Fort Myers, Florida
May 8, 2014
8:30 a.m. – 4:00 p.m. (or upon adjournment)

Chair: Ned Lautenbach; Vice Chair: Ed Morton
Members: Beard, Chopra, Colson, Kuntz, Link, Stewart, Tripp

1. Call to Order and Opening Remarks **Governor Ned Lautenbach**

2. University Online Education Presentations

8:40 a.m. **Florida Gulf Coast University** **Dr. Ronald Toll,**
*Provost and Vice President
for Academic Affairs*

9:10 a.m. **University of West Florida** **Dr. Pam Northrup,**
*Associate Provost of Academic
Innovation*

9:40 a.m. **Florida Atlantic University** **Dr. Victoria Brown,**
Assistant Provost of eLearning

10:10 a.m. **Break**

10:30 a.m. **Florida Agricultural & Mechanical
University** **Ms. Franzetta Fitz,**
*Director,
Instructional Technology*

11:00 a.m.	University of South Florida	Dr. Ralph Wilcox, <i>Provost and Executive Vice President</i>
11:30 a.m.	University of Florida	Dr. Joseph Glover, <i>Provost and Senior Vice President for Academic Affairs</i>
12:00 noon	Lunch	
12:45 p.m.	Florida International University	Dr. Douglas Wartzok, <i>Provost and Executive Vice President</i>
1:15 p.m.	University of Central Florida	Dr. Joel Hartman, <i>Vice Provost for Information Technologies & Resources</i>
1:45 p.m.	Break	
2:15 p.m.	Florida State University	Dr. Susann Rudasill, <i>Director, Office of Distance Learning</i>
2:45 p.m.	University of North Florida	Dr. Len Roberson, <i>Assistant Vice President of Technology</i>
3:15 p.m.	Florida Polytechnic University	Dr. Ghazi Darkazalli <i>Vice President of Academic Affairs</i>
3:35 p.m.	New College of Florida	Dr. Stephen Miles, <i>Provost and Vice President for Academic Affairs</i>

3. Closing Remarks and Adjournment

Governor Lautenbach

**STATE UNIVERSITY SYSTEM OF FLORIDA
BOARD OF GOVERNORS
Innovation and Online Committee
May 8, 2014**

SUBJECT: Universities' Presentations on Online Education

PROPOSED COMMITTEE ACTION

For information

AUTHORITY FOR BOARD OF GOVERNORS ACTION

Article IX, Section 7, Florida Constitution

BACKGROUND INFORMATION

Each university will present its current and planned program for online education.
Each presentation will include answers to the following questions:

1. What is the current state of online education at the university?
 - a. ADMINISTRATION: What is the organizational structure of the university's program for online education?
 - b. PROGRAMS: How many - and what percentage - of your programs are offered fully online now, by level? Can all fully online programs be taken from a distance, or do some require on-campus work?
 - c. PROGRAMS: What process do you use to determine which programs will be offered online?
 - d. PROGRAMS: What process do you use to determine which online programs will be state-funded and which will be self-sustaining?
 - e. TUITION AND FEES: What is the difference in the university's policies regarding tuition and fees for online courses and those for face-to-face courses?
 - f. TRAINING: Are faculty and teaching assistants required to undergo training before developing or teaching an online course?
 - g. PERFORMANCE: What performance measures are used to determine the success of the university's program for online education?
 - h. OTHER: Please include any other information about your online programs that you think the Committee should know.

2. What are the university's goals for online education, and what will need to happen for the university to fully realize those goals?

Supporting Documentation Included: E-Learning data from the Board's 2011-12 and 2012-13 Annual Accountability Reports

Facilitators/Presenters: Governor Lautenbach

ANNUAL ACCOUNTABILITY REPORT 2011-2012



STATE UNIVERSITY SYSTEM of FLORIDA
Board of Governors

E-LEARNING

About half of all students in the System (52% or 170,901) took at least one distance education course in 2011-12. The number of students enrolled in only distance learning courses for the same reporting period was 27,028, with 14,055 of those pursuing a baccalaureate degree.

The number of degree programs offered fully through distance education has steadily grown during the past ten years, and it has been dominated by graduate-level degree programs and post-baccalaureate certificate programs. However, there has recently been a surge in baccalaureate program development. The Florida Distance Learning Consortium conducted a university program survey for Fall of 2011 that identified 127 baccalaureate programs (up from 60 in 2009-10) offered primarily through distance education. These mostly targeted workforce areas such as business, information technology, healthcare, paralegal studies and emergency management. At the graduate level, 172 master's programs and 16 doctorates were offered primarily through distance education. An additional 337 post-baccalaureate certificate programs were offered primarily through distance education.

2011-12 Distance Learning Enrollment (by State Fundable Full-Time Equivalent)

In 2011-12, the System enrolled 15% of all FTE in a distance learning class, and several institutions (FGCU, UCF, USF, UWF) have more than 25% of all master's level instruction administered via distance learning.

	FAMU	FAU	FGCU	FIU	FSU	NCF	UCF	UF	UNF	USF	UWF	SUS
Lower Division	13	144	607	1,274	409	0	1,817	1,391	167	1,607	420	7,849
<i>% of Lower Total</i>	0%	2%	15%	13%	4%	0%	15%	14%	4%	16%	16%	11%
Upper Division	2	913	493	3,650	434	0	6,699	2,110	390	3,821	1,142	19,653
<i>% of Upper Total</i>	0%	10%	15%	25%	4%	0%	31%	16%	7%	25%	31%	19%
Master's (Grad I)	18	417	169	434	293	.	1,084	367	83	1,034	426	4,326
<i>% of Master's Total</i>	3%	23%	28%	13%	11%	.	33%	10%	10%	26%	52%	20%
Doctoral (Grad II)	0	35	19	14	35	.	133	279	8	62	32	617
<i>% of Doctoral Total</i>	0%	9%	18%	1%	1%	.	14%	5%	6%	4%	39%	4%
Total	33	1,509	1,287	5,371	1,171	0	9,733	4,148	648	6,525	2,020	32,445
<i>% of Total FTE</i>	0%	9%	16%	19%	4%	0%	26%	13%	6%	21%	26%	15%

Note: Table 3B in this System report, and each university report, provide more detailed information. This data was provided by each university for this report and does not come from the State University Database System (SUDS).

ANNUAL ACCOUNTABILITY REPORT
2012-2013STATE UNIVERSITY SYSTEM of FLORIDA
Board of Governors

DISTANCE LEARNING

Distance Learning Programs

The Florida Distance Learning Consortium conducted a university program survey for Fall of 2011 that identified programs offered primarily through distance education. According to this survey, 127 baccalaureate programs, 172 master's programs and 16 doctorates were offered primarily through distance education. An additional 337 post-baccalaureate certificate programs were offered primarily through distance education.

Distance Learning (& Hybrid) Course Sections

	FAMU	FAU	FGCU	FIU	FSU	NCF	UCF	UF	UNF	USF	UWF	SYSTEM
2012-13	2%	12%	15%	13%	7%	0%	20%	15%	9%	13%	39%	14%

Note: Distance Learning is a course in which at least 80 percent of the direct instruction of the course is delivered using some form of technology when the student and instructor are separated by time or space, or both (per 1009.24(17), F.S.). Hybrid is a course where 50% to 79% of the instruction is delivered using some form of technology, when the student and instructor are separated by time or space, or both (per SUDS data element 2052).

Distance Learning (FTE) Enrollment

In 2012-13, 21% of the System's instructional activity (FTE) occurred in a distance learning or hybrid course. Two institutions (UCF, UWF) had more than one-third of all FTE delivered using technology at least 50% of the time to bridge students and instructors who are separated by time or space.

2012-13 Distance Learning FTE as a Percentage of Total FTE by Level

	FAMU	FAU	FGCU	FIU	FSU	NCF	UCF	UF	UNF	USF	UWF	SYS
UNDERGRADUATE												
DISTANCE LEARNING	1%	9%	15%	21%	6%	0%	27%	19%	8%	23%	29%	18%
HYBRID	0%	6%	2%	2%	1%	0%	7%	2%	1%	2%	13%	3%
COMBINED	1%	15%	17%	23%	7%	0%	34%	21%	10%	25%	42%	21%
MASTER'S												
DISTANCE LEARNING	0%	25%	27%	14%	12%	.	32%	22%	14%	28%	58%	23%
HYBRID	0%	2%	10%	1%	5%	.	12%	1%	7%	3%	9%	4%
COMBINED	0%	27%	37%	15%	18%	.	44%	22%	21%	32%	67%	28%
DOCTORAL												
DISTANCE LEARNING	0%	10%	17%	2%	1%	.	13%	16%	5%	4%	39%	9%
HYBRID	0%	1%	16%	2%	0%	.	7%	4%	5%	0%	21%	3%
COMBINED	0%	11%	34%	4%	2%	.	20%	20%	10%	5%	60%	12%
TOTAL												
DISTANCE LEARNING	0%	11%	16%	20%	6%	0%	27%	19%	9%	23%	32%	18%
HYBRID	0%	6%	3%	2%	2%	0%	7%	2%	2%	2%	12%	3%
COMBINED	0%	16%	19%	21%	8%	0%	34%	21%	11%	25%	44%	21%

Note: Distance Learning is a course in which at least 80 percent of the direct instruction of the course is delivered using some form of technology when the student and instructor are separated by time or space, or both (per 1009.24(17), F.S.). Hybrid is a course where 50% to 79% of the instruction is delivered using some form of technology, when the student and instructor are separated by time or space, or both (per SUDS data element 2052).

ANNUAL ACCOUNTABILITY REPORT
2012-2013STATE UNIVERSITY SYSTEM of FLORIDA
Board of Governors**Distance Learning (FTE) Enrollment Trends**

At the System level, distance learning and hybrid FTE have increased for each level for the past three years – increasing from 17% of total FTE to 21% across all levels. Notably, two institutions (FAU and UF) increased their share of distance learning and hybrid FTE the most – with FAU moving from 8% to 16%, and with UF increasing 14% to 21%.

Distance Learning & Hybrid FTE as a Percentage of Total FTE [3-Year Trends]

	FAMU	FAU	FGCU	FIU	FSU	NCF	UCF	UF	UNF	USF	UWF	SYS
UNDERGRADUATE												
2010-11	0%	6%	19%	18%	3%	0%	30%	15%	5%	21%	56%	17%
2012-13	1%	15%	17%	23%	7%	0%	34%	21%	10%	25%	42%	21%
MASTER'S												
2010-11	0%	24%	42%	12%	18%	.	44%	14%	15%	30%	77%	25%
2012-13	0%	27%	37%	15%	18%	.	44%	22%	21%	32%	67%	28%
DOCTORAL												
2010-11	0%	9%	22%	2%	2%	.	19%	10%	4%	4%	66%	7%
2012-13	0%	11%	34%	4%	2%	.	20%	20%	10%	5%	60%	12%
TOTAL												
2010-11	0%	8%	21%	16%	5%	0%	31%	14%	6%	22%	59%	17%
2012-13	0%	16%	19%	21%	8%	0%	34%	21%	11%	25%	44%	21%

2013 Initiatives Related to Distance Learning

The 2013 Legislature created the Complete Florida program for the purpose of recruiting, recovering, and retaining adult learners until degree completion. The program is to be led by the University of West Florida, in coordination with other public and private postsecondary institutions in the state and is to be implemented by the end of the 2013-2014 academic year.

The 2013 Legislature also established the preeminent state research university institute for online learning. The institute, which was later named UF Online, was directed to begin offering high-quality, fully online baccalaureate degree programs in January 2014.

The Board of Governors directed the Chancellor to create a task force to determine ways in which services and online degree programs can be better coordinated to ensure state and student needs are being met in a cost-efficient and effective manner. The Task Force on Postsecondary Online Education in Florida has members from the SUS, the Florida College System, private institutions, the Florida Department of Economic Opportunity, and the Florida Virtual Campus. Its report will be submitted to the Chancellor in December 2013 for subsequent consideration by the Board of Governors.

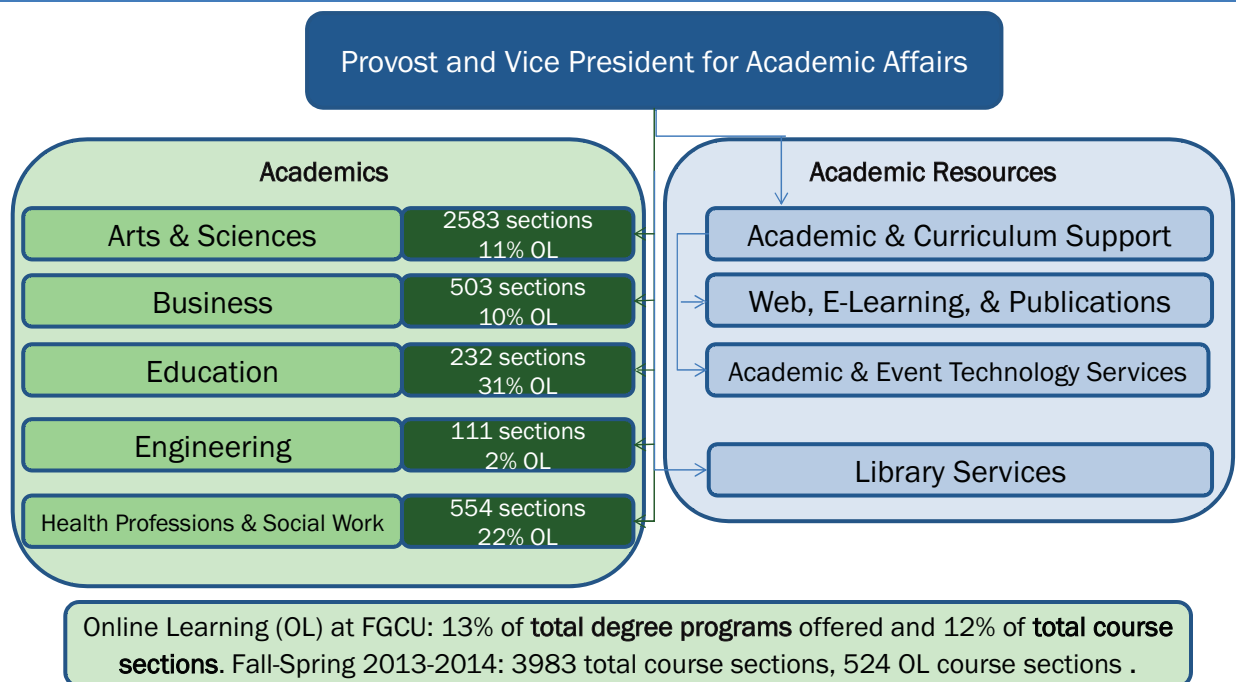


Online Learning at FGCU

Presentation to the Innovation and Online Committee, Florida Board of Governors
Provost and Vice President for Academic Affairs Ron Toll
May 8, 2014

10

Organization of Online Offerings



2

PROGRAMS, CERTIFICATES, AND COURSES AVAILABLE THROUGH ONLINE LEARNING

All of the courses necessary to complete:

MBA (Master's in Business Administration)
MPA (Master's in Public Administration)
Master of Science in Health Science
MA/MEd in Curriculum & Instruction
MEd in Special Education
Transitional Doctor of Physical Therapy (t-DPT)

Annual
Average
Total #
Degrees
Awarded:
60

All of the upper division courses required to complete a:

Bachelor of Science in Criminal Justice
Bachelor of Science in Health Science
Bachelor of Science in Legal Studies

Annual
Average
Total #
Degrees
Awarded:
50



Certificate Program

Health Services Administration Certificate

3

12

PROGRAMS, CERTIFICATES, AND COURSES AVAILABLE THROUGH ONLINE LEARNING

Online Learning courses offered in Fall 2013

College of Arts & Sciences

Ethics in the Crim Justice Sys
Ethics Criminal Justice Sys
Philosophy Human Communication
Introduction to Philosophy
Philosophy through Film
Logic and Disputation
Media Law and Ethics
Writing Theory & Practice
Professional Writing
Intro to Forensic Studies
Theories of Criminal Behavior
Forensic Behavioral Analysis
Meth Criminal Justice Research
Criminal Justice Data Analysis
Adv Forensic Behavioral Analysis
ST in CJ: Hate Crimes
ST in CJ: Terrorism
Senior Sem (Criminal Justice)
General Psychology
Experimental Psychology
Principles of Development
Psych Tests & Measurements
Sem in Program Plan & Evaluat
Public Policy/State & Local Politics & Admin
Capstone Seminar
Criminal Justice Policy
Methods of Offender Treatment
Juvenile Justice System
Constitutional Crim. Procedure
Substantive Criminal Law
Introduction to Law
Torts
Business Organizations
Professional Ethics
Legal Research & Writing
Wills, Trusts, and Estates
Real Estate Transactions
Am. Jurisprudence Capstone
Intro to Geography
US History to 1877
US History Since 1877
Modern Florida
African-Amer History to 1865

Social Organization of Work

Intro to Sociology
Social Problems
Comp Sociology-Global Issues
Introduction to Gender Studies
Sociology of Sport
Environmental Health
College Algebra
College Algebra - Lab
Intermediate Algebra
Intermediate Algebra Lab
Environmental Philosophies
Environmental Policy/Law
Statistical Methods
Human Genetics
Intro to Anthropology
Cultural Anthropology
Comparative Justice
Strategic Planning
Contracts
Intro to Indus/Organiz Psych
Comparative Politics
Politics of Developing Nations
Global Studies
State & Local Govt & Politics
Amer. Political Institutions
The Modern Presidency
Introduction to Theatre
History of the Visual Arts II
World Civilization since 1815
Underst Visual & Perform Arts
Global Population
Western Tradition, Part I
Directed Independent Study
College of Business
Marketing Management
Computer Software & Technology
Information Systems
Management Info Systems
Statistical Methods for Mgt
The Challenge of Leadership
Global Organization Issues
Contemporary Mgt Concepts
Analysis of Investments

College of Education

Intro to Teach Prof
Intro to Diversity for Educ
Classroom Org & Management
Learning Principles
Instructional Design
Foundations of Educ Research
Instructional Strategies
Capstone Seminar
Student Develop and Learning
Human Resources Development
Intro to Tech in Educ.
Intro to Educational Technology
Technology for School Leaders
Web Design and Development
Teaching in Virtual Settings
Children's Literature
Developmental Reading
Methods, Cur, and Instr Effect
Sec Lang Acquis Comm & Culture
University Colloquium
Work w/Fam: Pluralistic Persp
Foundations of Special Educ
Practicum for Ed Tech Prof
Directed Research
ST in Reading
Trends in Science Instruction
Individual Study in Counsel Ed
School Finance
Measurement Eval in Classroom
Assessment & Action Research
Foundation of Measurement
Seminar: Child/Youth Studies
TIP Practicum
Found. of Curriculum & Instr.
Career Development
Compreh., Cogn., Cont Area Rdg
Sports Economics
Resort & Hosp Mgmt Accounting
Resort & Rec Facilities Mgt.
Intro to Club & Spa Management
College of Engineering
Software Engrg Fundamentals
Software Proj Comp Networks

College of Health Professions & Social

Work Issues in Healthy/Mental Health
ST: Spirituality & Social Work
Introduction to Gerontology
Prins of Health Services Admin
US Health Care Systems
Health Care Info Systems
HR Mgmt in Health Svcs Orgs.
Health Svcs Mgmt & Operations
Managerial Epidemiology
Nutri Human Health & Wellness
Teach & Learn in Health Profs
Medical Terminology
Health Persp & Assessment
Epidemiology
Teaching Meth for Health Profs
Health Profs. Capstone Project
Shaping Hlthcare in 21st Cent.
Legal & Ethical Princ of HC
Mgmt. & Leadership in HlthCare
Research Methods in HealthCare
Senior Seminar
Statistical Analysis for HP
Research in Health Professions
Molecular Diagnostics
Hematology/Hemostasis
Immunohematology & Transfusion
Social Welfare and History
MDP I: Intro to Pharm & Imaging
Prof Writing & Lit. Review
PDS II: Teaching and Learning
PDS III: Sociocultural Influence
MDP IV: Diagnostic Testing
Chemical Dependency
Clinical Exercise Physiology
Pharm & Ergo Aids Sport & HP
Personal Fitness & Wellness
Human Perf and Energy Supplies
Adv. Diag. Reason. & Assess.
Acute Care II
Community Health Practicum
PDS VI-Legal/Ethical HC Policy

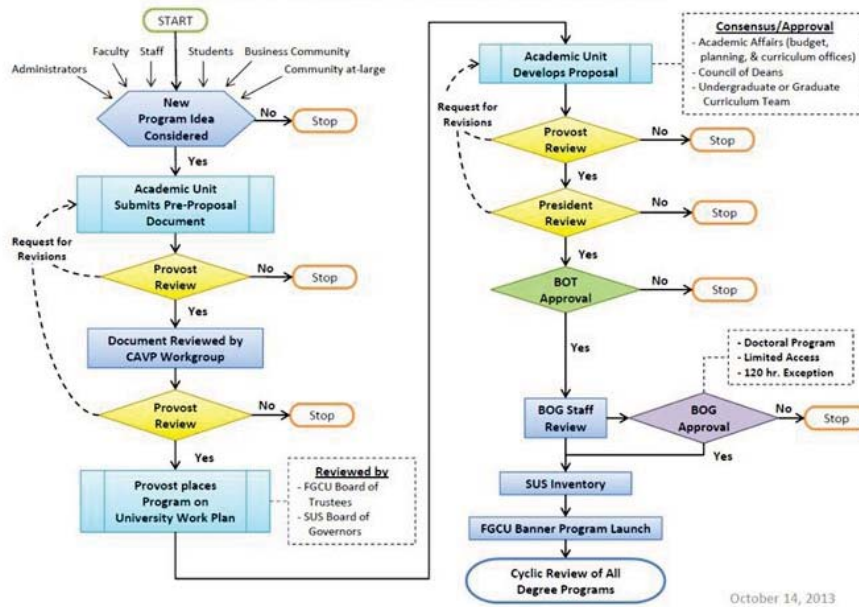
4

13

Process for Program Approval

Process for program approval follows criteria set in Board of Governors Regulation (B.O.G. Reg.) 8.011 and market rate programs follow criteria in B.O.G. Reg. 7.001

FGCU New Degree Program Approval Process



5

14

Tuition & Fees

There are no additional fees related to Online Learning

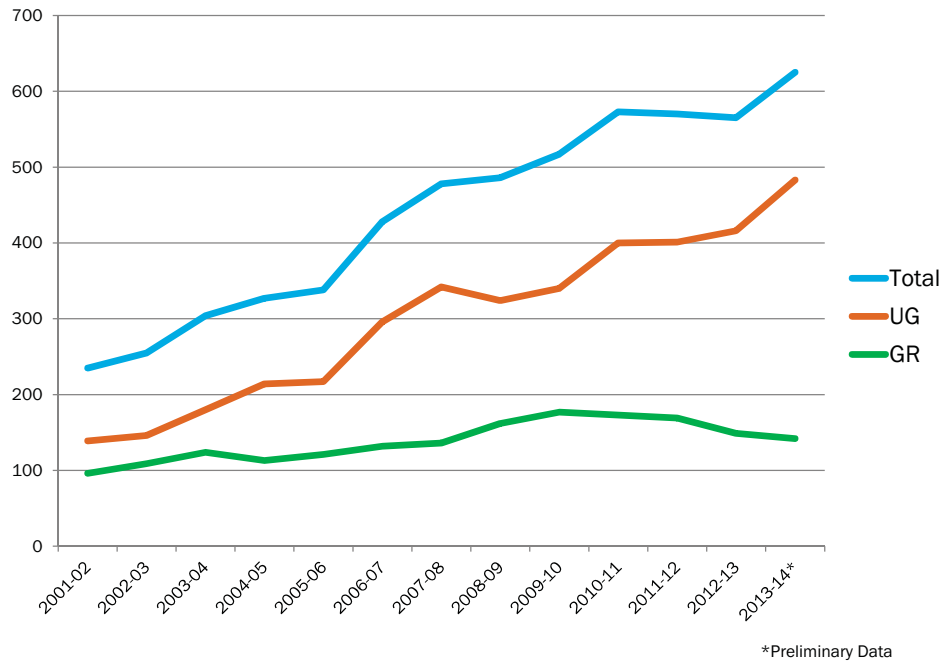
*Current Tuition and Fees	
In State Undergraduate	In State Graduate
\$6,318	\$6,732
*Tuition based on undergraduate 15 hours per semester and graduate 9 hours per semester.	

6

15

ONLINE LEARNING AT FGCU

Number of Online Learning Sections by Level

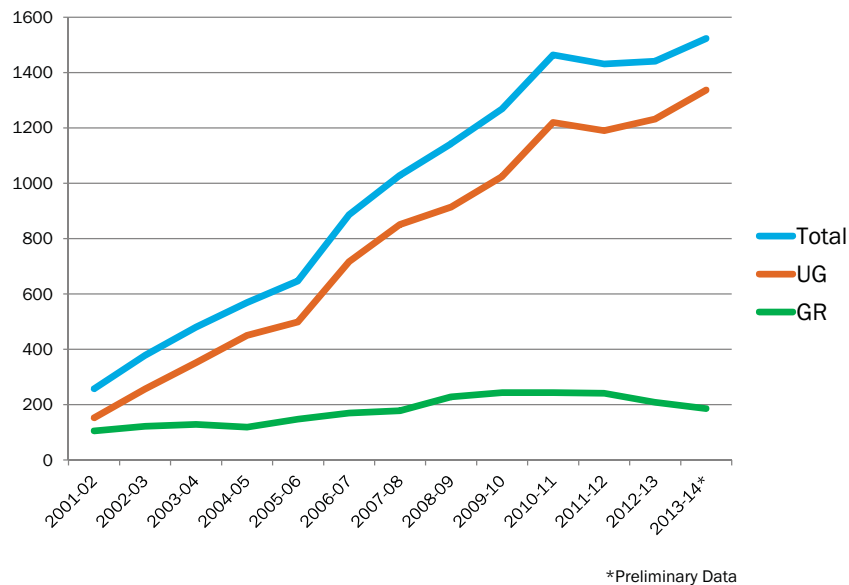


7

16

ONLINE LEARNING AT FGCU

Online Learning Full Time Equivalent (FTE) Students by Level

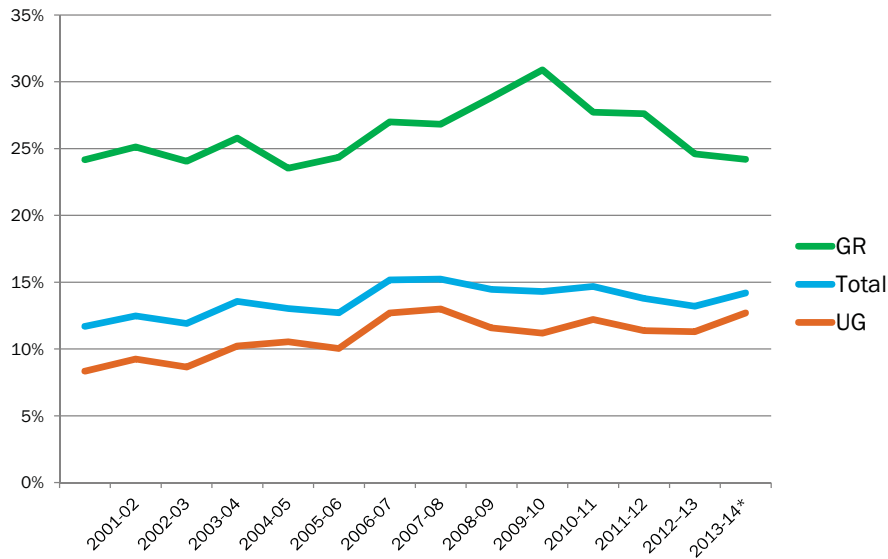


8

17

ONLINE LEARNING AT FGCU

Percent (%) Online Learning Course Sections by Level



*Preliminary Data

9

18

QUALITY ASSURANCE AND CONTINUOUS IMPROVEMENT FOR OUR ONLINE LEARNING OFFERINGS

1. Specialized accreditation of programs

- Master's in Public Administration
 - NASPAA accredited in 2008
- Master's in Special Education
 - NCATE accredited
- Master's in Curriculum and Instruction-Educational Technology
 - NCATE accredited
- Master's in Business Administration
 - AACSB accredited

2. Regional accreditor SACS monitors

- Use of full-time faculty
- Use of good practices
- Success of students
- Student satisfaction

3. Internal audit

- 2012 highlighted the quality of our offerings in terms of
 - Number of courses taught by full-time faculty
 - Size of courses
 - Grades earned by students

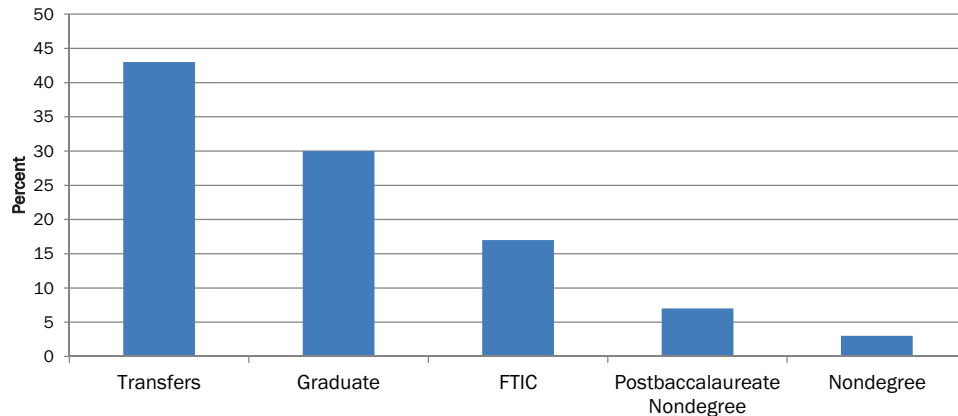
4. Review of academic support services

- Sloan Online Scorecard

WHO ARE OUR ONLINE ONLY LEARNING STUDENTS?

- Most live off campus
- Ages range from 16-63 years
- About 85% are part time
- Almost entirely Florida residents

Percent of Student Types Comprising Online Only Learning
2013-2014



11

20

THE FUTURE OF ONLINE LEARNING AT FGCU

- A new Learning Management System (Canvas) to support Online Learning purchased in 2012 and fully implemented in 2013
- Pending BOG/SUS options, where does FGCU fit in with these plans?
 - Complete Florida
 - FL Virtual Campus
- Continuing pressure on traditional bricks and mortar with space at a premium
- Strategic Plan for Online Learning



12

21

TRAINING

Training for both online course development and teaching an online course is available, but not required.

- Instructional Designers (ID) regularly review online courses.
- e-Learning staff participate in numerous activities (workshops, consultations, meetings, etc.) that create opportunities to engage faculty in conversations about online course design and teaching.

<i>Position (#)</i>	<i>Attended LMS Basics Workshop # (%)</i> *	<i>Attended Other DL Training # (%)</i> *
Faculty (86)	64 (74%)	70 (81%)
Adjunct (29)	7 (24%)	13 (45%)

*It is common for newly hired faculty as well as adjuncts to have received training from a previous institution, and therefore elect not attend training at FGCU.

13

22

Technology in Faculty Development

Course Design Academy

Flipped Classroom Faculty Learning Community



Online Innovation Faculty Learning Community

14

23

...and More Technology in Faculty Development

Course Design Academy II

SPARCT Academy

New Faculty Academy



15

24

Lucas Center for Faculty Development

\$2 Million Gift Pledged by David Lucas

The Lucas Center for Faculty Development will focus on offering faculty training in a range of areas: instructional design, classroom management, learning theory, assessment, and teaching techniques. It also will expand the training offered so that it will be relevant to all stages in a faculty member's teaching career. The Center will actively engage and promote online learning pedagogy.



16

25

On the Horizon

Pedagogy Academy for faculty members at FGCU for 1-5 years. One goal will be to explore best practice in online teaching among other pedagogy skills.
Launch Spring 2015.

Adjunct Academy with goals similar to the Pedagogy Academy. Launch Fall 2015.

Online Teaching Academy to focus entirely on online teaching: how to set up your syllabus, types of activities, evidenced-based practices to engage students in multiple ways, building community, organization, and managing the course.
Launch AY 2015-2016.



17

26

Complete Florida

- State initiative to recruit, recover and retain Florida adults who have stopped out of college and assist them in completing an associate or baccalaureate degree aligned to high-wage, high-skill workforce needs.
- 2.2 million adult learners, 25% of the workforce in Florida have earned some college credit, but due to various circumstances, have been unable to complete their degree.
- Partnership of 11 schools, including 4 SUS: FGCU/FIU/UCF/UWF, along with FLVC, who have online programs which can be offered in a degree-completion format.
- Complete Florida will offer over 45 degree-programs.
- FGCU programs participating effective Fall 2014: Bachelor of Science in Criminal Justice; Bachelor of Science in Health Sciences.

18

27

Strategic Planning for Online Learning at FGCU

- Process began two years ago with review of status of online learning.
 - Provided an internal environmental scan on Infrastructure supporting online learning.
- Task Force of faculty and staff meeting since January to develop a strategic plan
- Draft recommendations to focus on advancing online learning by
 - Creating a clear organizational locus for coordinating our efforts
 - Featuring online learning in the university's mission statement
 - Funding commensurate with goals
 - Infrastructure and support
 - Quality assurance
 - Policy development as a framework for quality assurance and periodic review



19

28



29



UNIVERSITY of WEST FLORIDA INNOVATION INSTITUTE

Distance Learning Update

Dr. Pam Northrup, Associate
Provost/Academic Innovation

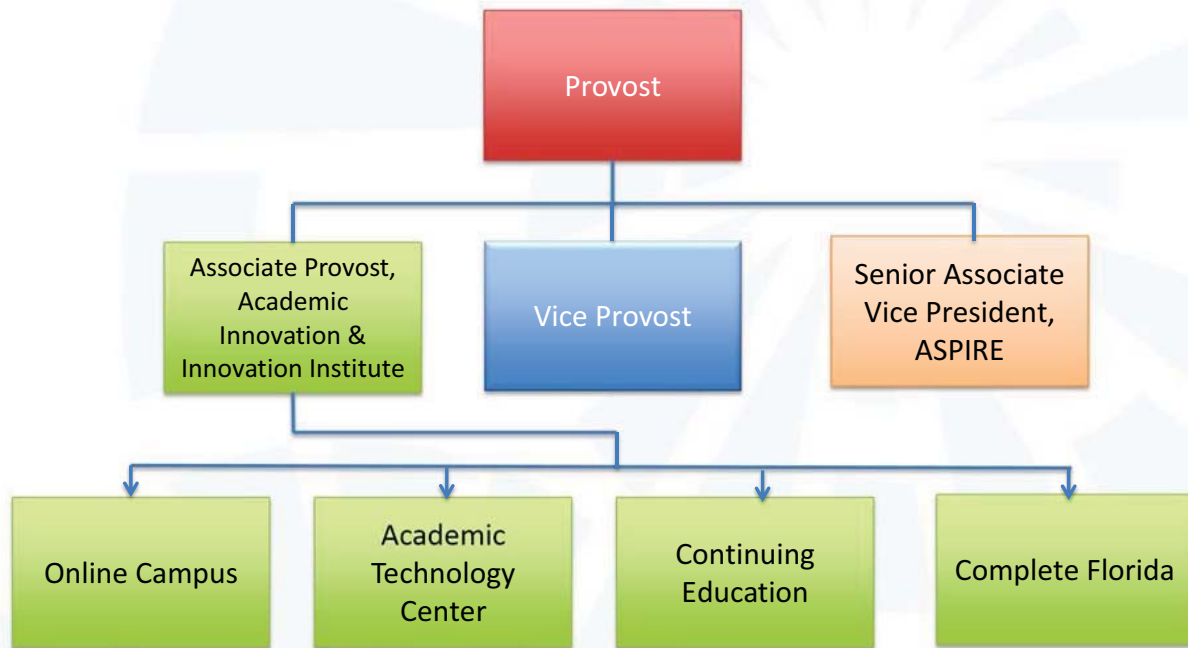
30

UWF's Model for Distance Learning



31

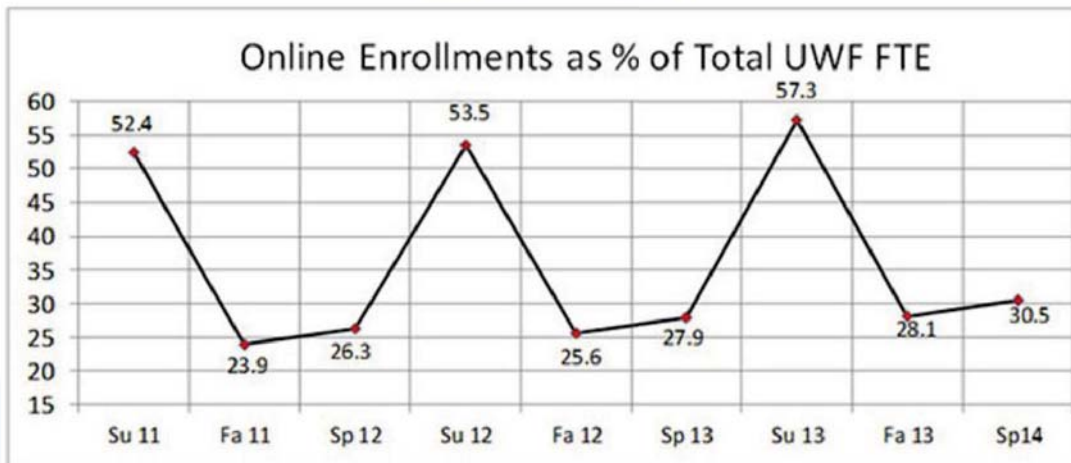
Administration



32

Fully Online Programs

Online Course Statistics (OLC coded courses)



Source: ENS000012
end of drop/add

TE

33

16% of all UWF Bachelors Programs are Fully Online



- Engineering Technology, B.S. - Information Engineering Technology
- Exceptional Student Education, B.A.
- Health Sciences, B.S.
- Information Technology, Interdisciplinary, B.S. - Networking & Telecommunications
- Maritime Studies, B.A.
- Nursing: RN-BSN
- Workforce and Program Development, B.S.



34

44% of all Masters Programs are Fully Online

- Administration, M.S.A.
- Computer Science, M.S.
- Curriculum & Instruction, M.Ed.
- Educational Leadership, M.Ed.
- Exceptional Student Education Comprehensive, M.A.
- Instructional Technology, M.Ed.
- Mathematics, M.S.
- Nursing, M.S.N.
- Political Science, M.A.
- Public Health, M.P.H.
- Reading, M.Ed.

Doctoral Program

- Ed.D. in Curriculum and Instruction



35

Online Certificate Programs

Rapidly meeting industry demands



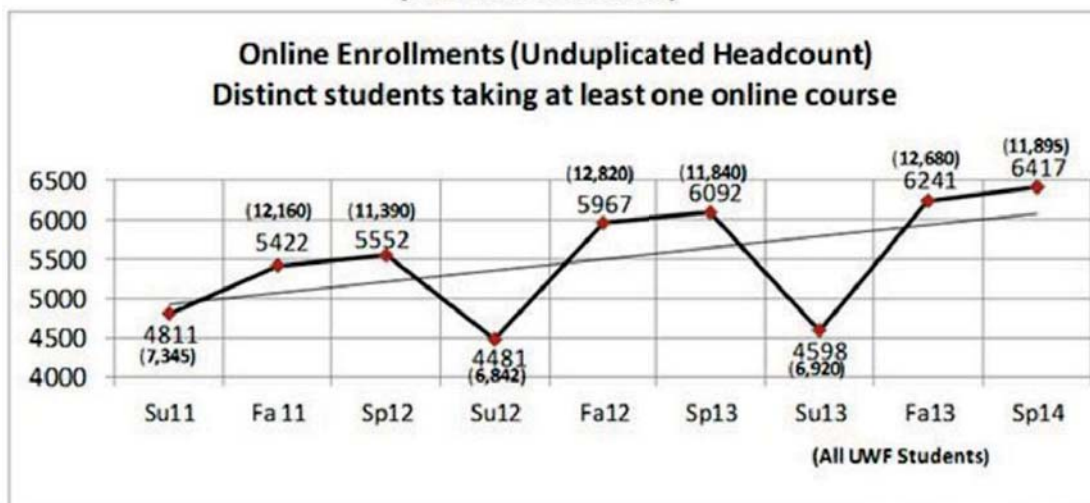
Partners with industry to build and implement Intelligence Analysis

- Intelligence Analysis
- Professional Accountancy
- Arabic Language and Culture
- Civics Educator
- Database Systems
- Geographic Information Systems (GIS)
- Human Performance Technology
- Medical Informatics
- Not-For-Profit Administration
- Public Health
- Teacher Ready
- Technology Systems Support
- Workforce and Program Development



36

Online Course Statistics (OLC coded courses)



Source: RP060R01
end of drop/add



37

Number of Graduates by Level

Level	Fall 09	Fall 10	Fall 11	Fall 12	Fall 13
Upper	22	28	56	115	126
Masters	168	194	262	249	263



Program Costs

	Hours	Tuition and Fees	Total Tuition and Fees	Books and Materials	Grand Total
Undergraduate Programs					
Exceptional Student Education	132	\$218.87	\$28,890.84	\$4,000	\$32,890.84
Engineering Technology	120	\$218.87	\$26,264.40	\$4,000	\$30,264.40
Health Sciences	120	\$218.87	\$26,264.40	\$4,000	\$30,264.40
IT, Interdisciplinary	120	\$218.87	\$26,264.40	\$4,000	\$30,264.40
Maritime Studies	120	\$218.87	\$26,264.40	\$4,000	\$30,264.40
Nursing	124	\$265.63	\$32,938.12	\$4,000	\$36,938.12
Workforce and Program Development	120	\$218.87	\$26,264.40	\$4,000	\$30,264.40
Graduate Programs					
MSA	36	\$379.91	\$13,676.76	\$2,000	\$15,676.76
Computer Science	32	\$379.91	\$12,157.12	\$2,000	\$14,157.12
Curriculum and Instruction	36	\$379.91	\$13,676.76	\$2,000	\$15,676.76
Ed Leadership	36	\$379.91	\$13,676.76	\$2,000	\$15,676.76
Exceptional Student Education	36	\$379.91	\$13,676.76	\$2,000	\$15,676.76
Instructional Technology	36	\$379.91	\$13,676.76	\$2,000	\$15,676.76
Mathematics	41	\$379.91	\$15,576.31	\$2,000	\$17,576.31
Nursing	39	\$379.91	\$14,816.49	\$2,000	\$16,816.49
Political Science	42	\$379.91	\$15,956.22	\$2,000	\$17,956.22
Public Health	36	\$379.91	\$13,676.76	\$2,000	\$15,676.76



Program Selection

- **Selecting fully online programs**
 - Determination of demand
 - Determination if resources are available to support conversion of traditional to online programs
 - Agreement that faculty will participate in training and support activity
- **State funding vs. self sustaining**
 - Unique market demand exists, primarily non-traditional and out of state
 - Program scalability
 - Determination if market will bear program costs
 - Determination of how earned revenue can be used to support broader academic needs (programs and support)



Tuition and Fees

- Through Complete Florida UWF is studying the options for reduced costs for distance learning
- Distance Learning Fee: \$15.00 per semester hour





Faculty Training

- Training courses include:
 - Designing a Quality Online Course
 - Teaching a Quality Online Course
 - Quality Online Instructor Certificate
 - Fast Track Courses
 - Mini-conferences
 - Webinars



Quality Matters used as measure of quality for online course implementation



Foundational Quality Indicators: Performance Measures

Quality Goal	Metric
Institutional Alignment	Cost Growth/Enrollments/Demographics Partnerships Alignment to Work Plan
Quality Curriculum	Comparable educational experience Academic Integrity Course Completion Rates
Faculty Support	Training Support Quality Matters
Student Experience	Identical resources to support online students (labs, support, services, etc.) Quality of instruction indicators
Continuous Improvement	Continuous review of metrics, monitoring national trends

At the University of West Florida, we...

Provide transformational experiences for distance learning students at all levels while crystalizing a climate for high quality teaching and learning



44

Goals for Distance Learning

Goals	Indicators
Increase distance learning enrollments to 50% in fully online programs	Complete Florida, adult learner Graduate enrollments Certificates
Test transformative models that support reduced costs	Competency-based programs Prior Learning Assessment Academic Coaching Models Accelerated Starts
Provide an excellent student experience	Streamlined admissions Concierge-based coaching Online Doctoral Support Center
Connect online student graduates to the workforce	Connect graduates to careers Partner with employers
Maintain excellence in all online programs and courses	Continue quality framework Recognize excellent programs Incentives to 'faculty innovators'

For more information, contact

Dr. Pam Northrup
University of West Florida
pnorthru@uwf.edu





47

FLORIDA ATLANTIC UNIVERSITY

Organizational Structure

- Center of eLearning Center
 - ❑ Located in the Provost office
 - ❑ Provides
 - Professional development
 - Support
 - eDesign services
- Online degrees are managed by the Colleges



Making Waves

48

Courses Offered by Delivery Method

	Total		Lower		Upper		Graduate	
Distance	1268	11%	79	3%	653	14%	546	16%
Hybrid	322	3%	226	8%	53	1%	43	1%
On campus	9501	86%	2544	89%	4047	85%	2910	83%
Total	11091		2849		4743		3499	

Institutional Effectiveness and Analysis

49

Online Programs

- Bachelors
 - 10.7% online
- Masters
 - .08% online
 - 23% are >50% online
- .04% Doctorate programs with >50% online
- 17% of courses taken in a distance format



Making Waves

Graduates of Online Programs

	2010-2011	2011-2012	2012-2013
Bachelors	40	20	41
Masters	10	11	7
Total	50	31	48

- BBA: Accounting, Management, Marketing
- Master: Social Foundation Instructional Technology

Institutional Effectiveness and Analysis

51

Online Degree First Time: Fall 2014

- MBA: Accounting & Taxation
- Masters: Exercise Science and Health Promotion
- Masters: School Leaders
- Masters: Curriculum and Instruction
- Bachelors: Geomatics Engineering
- Bachelors: Public Safety Administration



Making Waves

52

Program Development

- Program assessment: feasibility
- CeL and department partnership
- Marketing!



Making Waves

53

Self-Sustaining Programs

- Currently, market-based application.
- Exploring options for other self-sustaining programs.



Making Waves

54

Tuition and Fees

- Online student population taking campus courses.
- All students pay campus fees
- Online courses pay distance fees
- Revisiting fee policy more online programs becoming available Self-Sustaining Programs



Making Waves

55

Student Fees

Undergraduate Comparison

	Per Credit Hour	12 Credit Hours
On Campus Course	\$ 199.54	\$ 2,394.48
Online courses not enrolled in fully online program	\$ 236.54	\$ 2,838.48
Fully Online degree seeking students BBA Program (Self-Sustaining)	\$ 259.54	\$ 3,114.48

Graduate Comparison

On Campus	\$ 369.82	\$ 4,437.84
On Campus taking online courses	\$ 406.82	\$ 4,881.84

56

Training

- 4 levels of training
 - Theories course
 - Facilitator course
 - Designer courses
 - Advance technology electives
- Moving towards a badging system
- Transitioning from training faculty to designing courses for faculty



Making Waves

57

Performance Measures

- BOG Measures
 - Number of courses offered online
 - Number of programs offered online
 - Number of student enrolled in online courses
- Productivity Measures
 - Conducted a survey of courses offered to ensure students access to courses
 - Number of courses produced by the center
 - Number of faculty accessing services
- Quality Measures
 - Evaluation of Quality through Student Perception of Teaching (SPOT) completed in all Courses
 - Exit student survey of the quality of courses
 - Student learning outcomes assessed during program evaluations



Making Waves

58

Other Information

- FAU's Center for Learning and Student Success (CLASS)
 - 2013 Frank L. Christ Outstanding Learning Center award winner
 - Research center developing innovative technological solutions



Making Waves

59

Other Information

- Launching one-stop student
 - Promotes student identity
 - Provides student services.



Making Waves

60

Other Information

- Launching research based communities of practice
 - Developing best practice instructional strategies
 - Using emerging distance learning
 - Involving students through QEP process (Distinction through Discovery)



Making Waves

61

University Goals for Online

- To leverage online learning to promote student success through increase access to courses, advisors, and university support systems
- To provide access to a world renown university faculty for non-traditional students
- To create a research focused Center of eLearning to develop innovative best practices for emerging technologies
- To increase support services and technologies that promote eLearning initiatives



Making Waves

62

What We Need

- Hybrid as a stepping stone
 - Improving classroom technologies
 - Hybrid allows faculty to experiment with ideas
 - Maximizes the best of both online and on campus
 - Allows a gradual development process which leads to better online courses
 - Serves as a transition to completely online
- Ability to charge a fee
 - We can provide extensive support
 - We can design the online interactive components



Making Waves

63

What We Need

- A New Quality Certification Process
 - Quality Matters not appropriate for all courses
 - A different system that acknowledges quality for research based institutions could be developed
- Build partnerships with other SUS
 - Process to share FTE
 - Protect intellectual property



Making Waves

64

In Summary

- FAU has a rich history in distance learning
- We are engaging in research to improve the delivery of instruction using emerging technologies



Making Waves

Distance Learning Update



Florida A&M University
Board of Governors Meeting May 8, 2014
Innovation and Online Committee

Presenter: Franzetta D. Fitz
Director, Office of Instructional Technology

elearning.famu.edu



"Your Online Connection to Excellence with Caring"

66



Florida A&M University

ADMINISTRATION

PROGRAMS

TUITION & FEES

TRAINING

PERFORMANCE

About FAMU



Your Online Connection To "Excellence With Caring"

67



Florida A&M University

ADMINISTRATION

PROGRAMS

TUITION & FEES

TRAINING

PERFORMANCE

FAMU Online



Strategic Plan Goal 1.1 (Enhance Access to the University)

Your Online Connection To "Excellence With Caring"

68



Florida A&M University

ADMINISTRATION

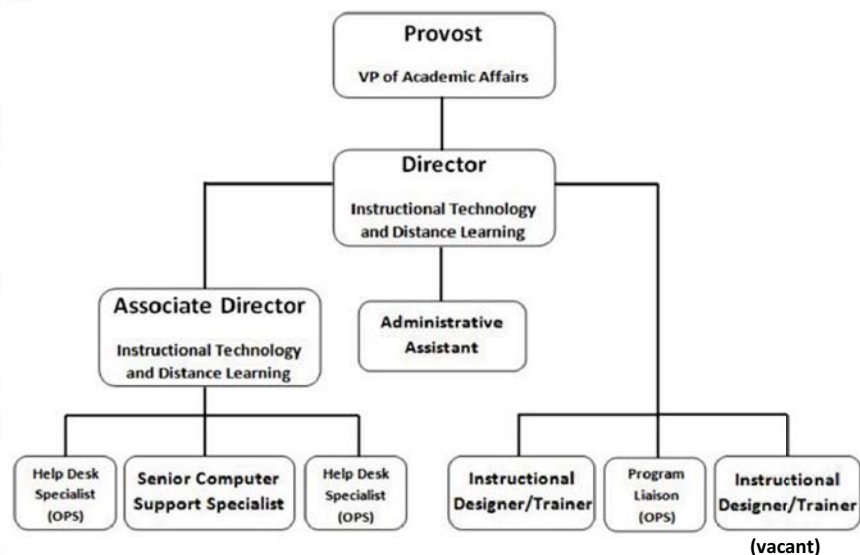
PROGRAMS

TUITION & FEES

TRAINING

PERFORMANCE

Organizational Structure



Your Online Connection To "Excellence With Caring"

69



Organizational Structure

ADMINISTRATION

PROGRAMS

TUITION & FEES

TRAINING

PERFORMANCE

Online Learning Representatives

Academic

- School of Graduate Studies and Research
- School of Business and Industry
- Institute of Public Health
- School of Nursing
- College of Science and Technology
- College of Social Sciences, Arts and Humanities
- Library Services

Administrative

- Financial Aid Office
- IT Help Desk
- Registrar's Office

Your Online Connection To "Excellence With Caring"

70



Justification

ADMINISTRATION

PROGRAMS

TUITION & FEES

TRAINING

PERFORMANCE

- **Expand Access to Lifelong Learning**
 - **Graduate Programs**
 - Increase Student Enrollment
 - Workforce Demand
 - Conveniently Enhance Career Opportunities
 - **Undergraduate Courses**
 - General Education Courses
 - Increase Graduation Rates
- **S.T.E.M. Disciplines**
- **Expand FAMU's Brand**

Your Online Connection To "Excellence With Caring"

71



Florida A&M University

ADMINISTRATION

PROGRAMS

TUITION & FEES

TRAINING

PERFORMANCE

Portfolio

- **Current Online Degree Programs**
 - Master of Business Administration (MBA)



Your Online Connection To "Excellence With Caring"

72



Florida A&M University

ADMINISTRATION

PROGRAMS

TUITION & FEES

TRAINING

PERFORMANCE

Portfolio

- **Current Online Degree Programs**
 - Master of Public Health (MPH)
 - Master of Science in Nursing (MSN)
- **Number of Students Enrolled in Online Degree Programs Since Fall 2011**
 - 142
- **Number of Graduates in Online Degree Programs Since Fall 2011**
 - 48
- **Total Number of Enrollments in Undergraduate Online Courses Since Spring 2012**
 - 1,526
- **Percent of Undergraduate Courses Online**
 - 2%

Your Online Connection To "Excellence With Caring"

73



Florida A&M University

ADMINISTRATION

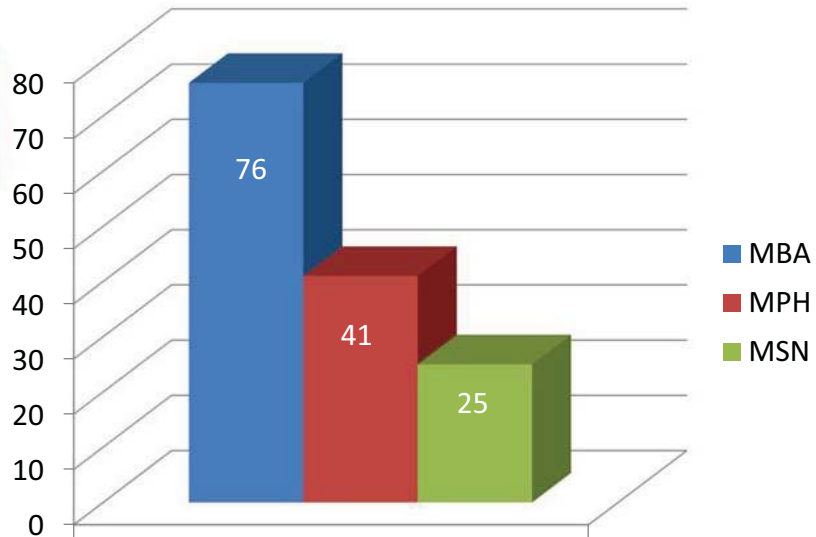
PROGRAMS

TUITION & FEES

TRAINING

PERFORMANCE

Portfolio



Enrolled Students

Your Online Connection To "Excellence With Caring"

74



Florida A&M University

ADMINISTRATION

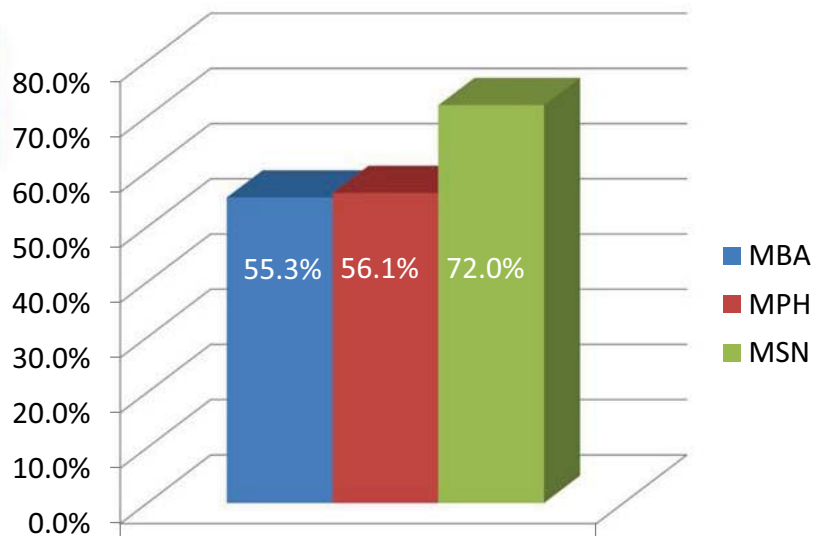
PROGRAMS

TUITION & FEES

TRAINING

PERFORMANCE

Portfolio



Retention Rate

Your Online Connection To "Excellence With Caring"

75



Florida A&M University

ADMINISTRATION

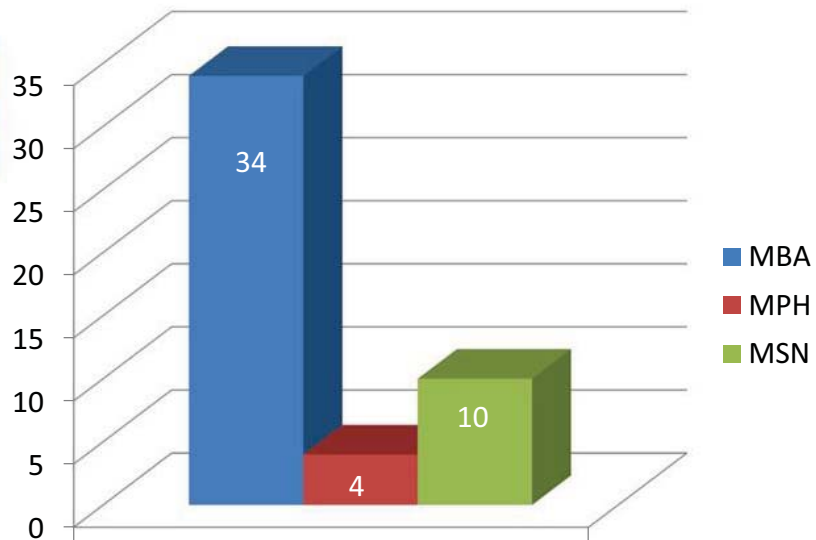
PROGRAMS

TUITION & FEES

TRAINING

PERFORMANCE

Portfolio



Graduated Students

Your Online Connection To "Excellence With Caring"

76



Florida A&M University

ADMINISTRATION

PROGRAMS

TUITION & FEES

TRAINING

PERFORMANCE

Online Graduates



Your Online Connection To "Excellence With Caring"

77



Florida A&M University

ADMINISTRATION

PROGRAMS

TUITION & FEES

TRAINING

PERFORMANCE

Funding Models

- **Current Tuition Model for the Online Graduate Degree Programs**

- **MBA** - \$34,850.00 (Self Supportive)
- **MPH** - \$32,500.00 (Self Supportive)
- **MSN** - \$30,750.00 (Self Supportive)

Your Online Connection To "Excellence With Caring"

78



Florida A&M University

ADMINISTRATION

PROGRAMS

TUITION & FEES

TRAINING

PERFORMANCE

Funding Models

- **Undergraduate Course Offerings**

- State Funded (E&G)
 - In-state - \$151.78
 - Out-of-state - \$549.80

- **Tuition Model for the Proposed Online Undergraduate Degree Programs and future Graduate Degree Programs**

Your Online Connection To "Excellence With Caring"

79



ADMINISTRATION

PROGRAMS

TUITION & FEES

TRAINING

PERFORMANCE

Tuition and Fees

- The current online graduate program tuition assessment is based on BOG Continuing Education Regulation 8.002.
- The online undergraduate courses follow the same tuition and fee schedule as the traditional courses based on FAMU BOT Regulation 3.017 Schedule of Tuition and Fees.

Your Online Connection To "Excellence With Caring"

80



ADMINISTRATION

PROGRAMS

TUITION & FEES

TRAINING

PERFORMANCE

Faculty Development

- **Online Program Components**
 - Learning Management System (LMS)
 - Pedagogy
 - Student Services
 - Test Proctoring
 - Teaching Practicum
- **Recertification for online instruction**
 - Every two years

Your Online Connection To "Excellence With Caring"

81



Florida A&M University

Key Performance Indicators

ADMINISTRATION

PROGRAMS

TUITION & FEES

TRAINING

PERFORMANCE

- **Enrollment**
- **Retention**
- **Graduation Rates**
- **Feedback**
- **Career Advancement**

Your Online Connection To "Excellence With Caring"

82



Florida A&M University

University's Goals

- **Launch Undergraduate Online Degree Programs**
- **Increase Undergraduate Online Courses**
- **Join the Complete Florida Initiative**

Your Online Connection To "Excellence With Caring"

83



Florida A&M University

Mobile Student Services

- Increase Engagement via FAMU MOBILE



Your Online Connection To "Excellence With Caring"

84



Florida A&M University

Mobile Student Services



- ▶ **LIBRARY:** Search through the complete catalog, check item availability, and contact a librarian directly for additional information.



Your Online Connection To "Excellence With Caring"

85



Florida A&M University

Mobile Student Services



▶ **iRATTLER MOBILE:**

Provides real-time access to important student academic information in our Peoplesoft SIS.



Your Online Connection To "Excellence With Caring"

86



Florida A&M University

Mobile Student Services



▶ **BLACKBOARD MOBILE LEARN:**

Takes interactive teaching and learning mobile, giving students and educators access to their courses, content and organizations.



Your Online Connection To "Excellence With Caring"

87



University's Goals

- **Launch New Graduate Online Degree Programs**
- **Provide Opportunities for our Veterans**
- **Increase Graduation Rates**
- **Decrease Student Debt**

Your Online Connection To "Excellence With Caring"

88



Testimonial



Jasmine Barnett

School of Business and Industry
Spring 2013 Graduate

Florida A&M University (FAMU) Online is kicking off its fourth academic year this fall.

For Jasmine Barnett, an operations representative at Accenture in the Murray Hill office in New Jersey, the flexibility of the program has assisted her with the management of her career, her course work and her personal life without feeling overwhelmed.

Barnett, who earned her master's in business administration from FAMU Online, is a proud graduate from one of three flagship master's programs: business, public health and nursing.

Your Online Connection To "Excellence With Caring"

89




Florida A&M University

It's Possible to Balance It All

FLORIDA **A&M** UNIVERSITY
REGISTER TODAY
www.FAMUONLINE.com
1(855)777-FAMU

Your Online Connection To "Excellence With Caring"

90



FLORIDA **A&M** UNIVERSITY
ONLINE DEGREE PROGRAM

It's Possible To Balance It All...

Family + Career + Education

Apply now for the online master's degree programs in
BUSINESS ADMINISTRATION, NURSING and PUBLIC HEALTH.

www.FAMUonline.com

Thank You!

1-855-777-FAMU (3268)

91



Florida A&M University

Questions



Franzetta D. Fitz

Director, Office of Instructional Technology

franzetta.fitz@famu.edu

850-599-3460

Your Online Connection To "Excellence With Caring"

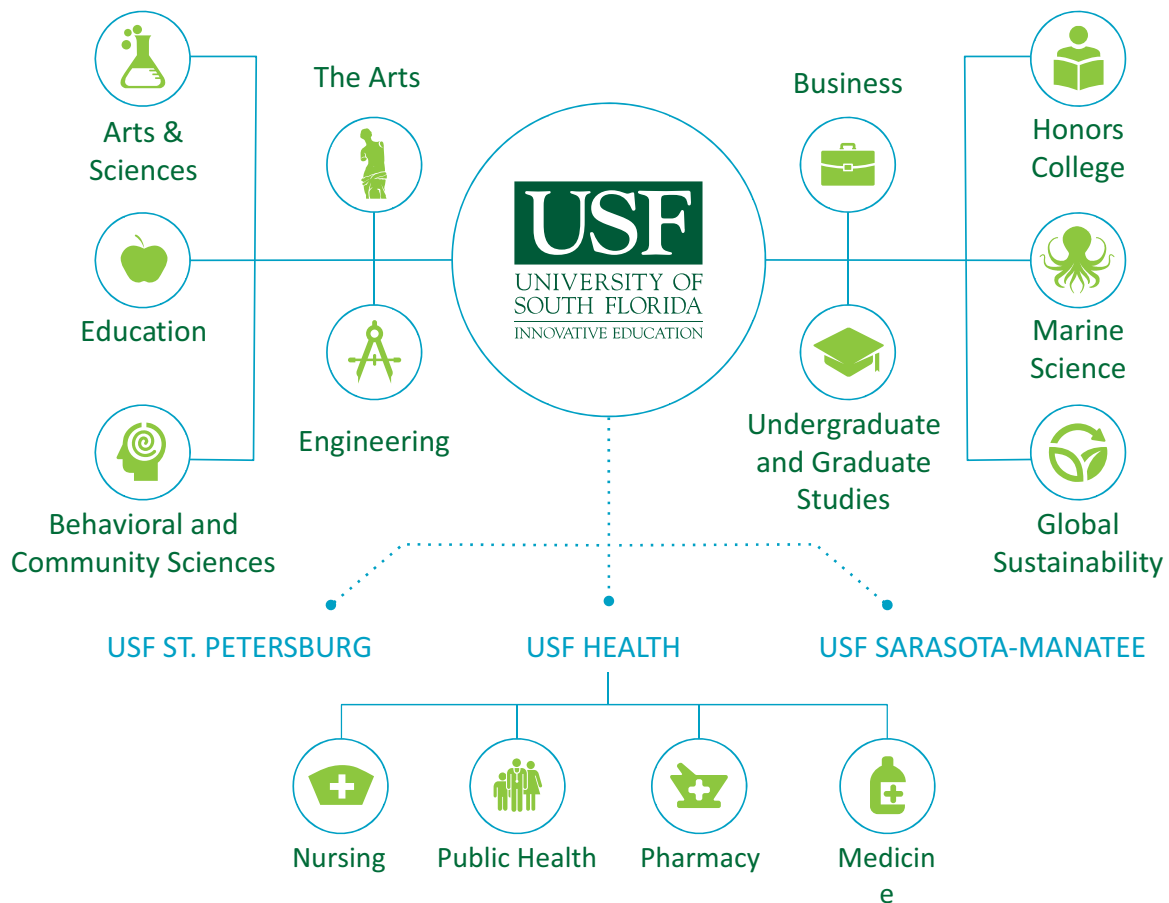
Innovative Education @USF

BOG INNOVATION & ONLINE
COMMITTEE WORKSHOP

Florida Gulf Coast University
May 8, 2014



93



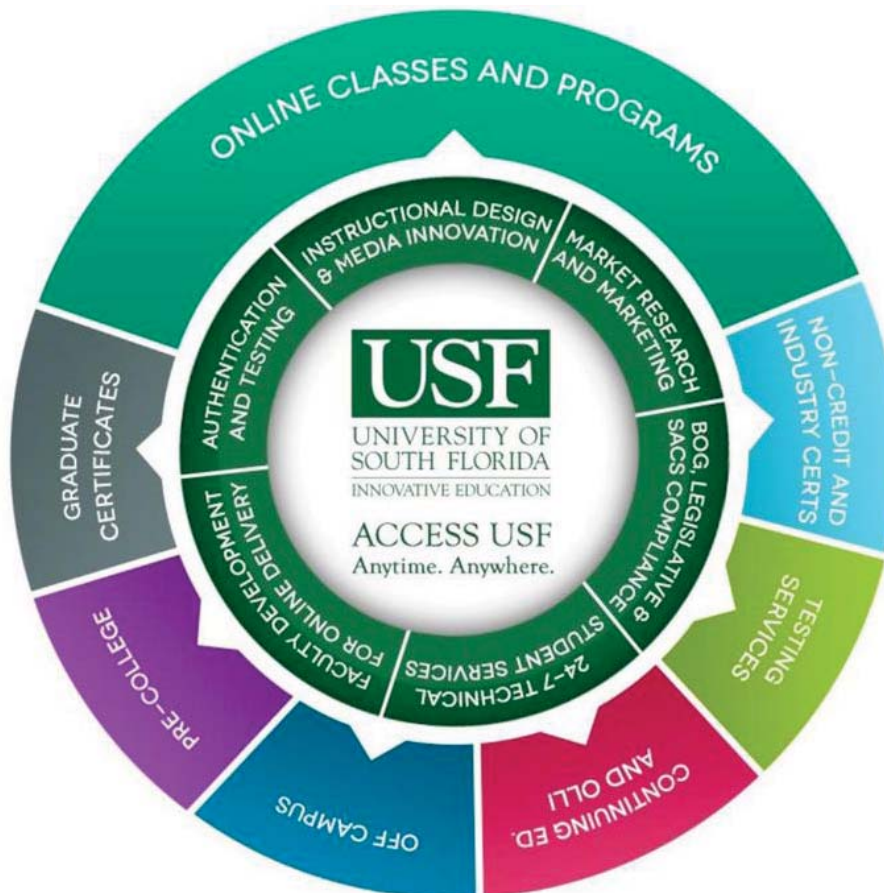
94



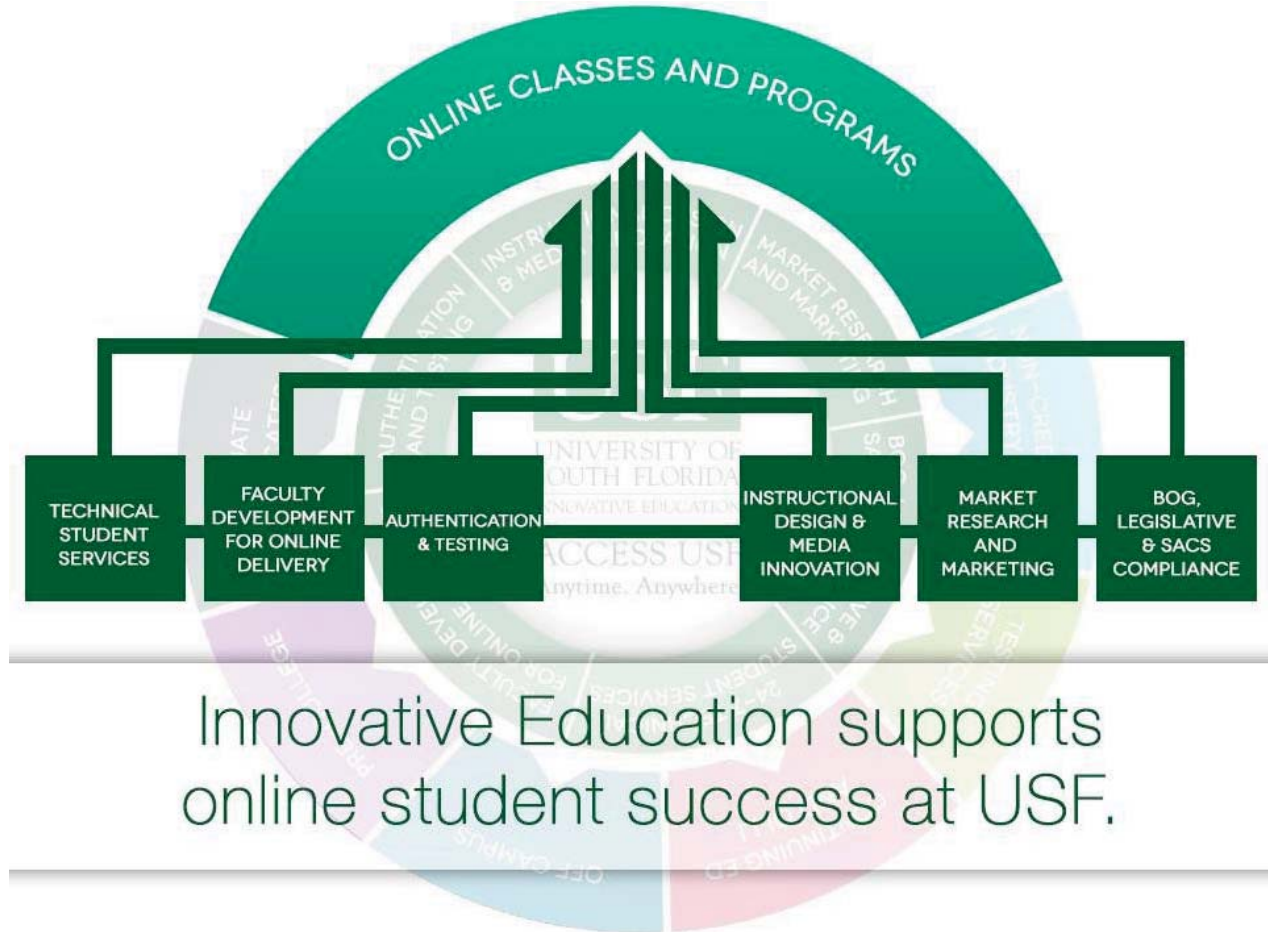
Expanding
the reach of USF
to meet the goals
of learners
Anytime, Anywhere.



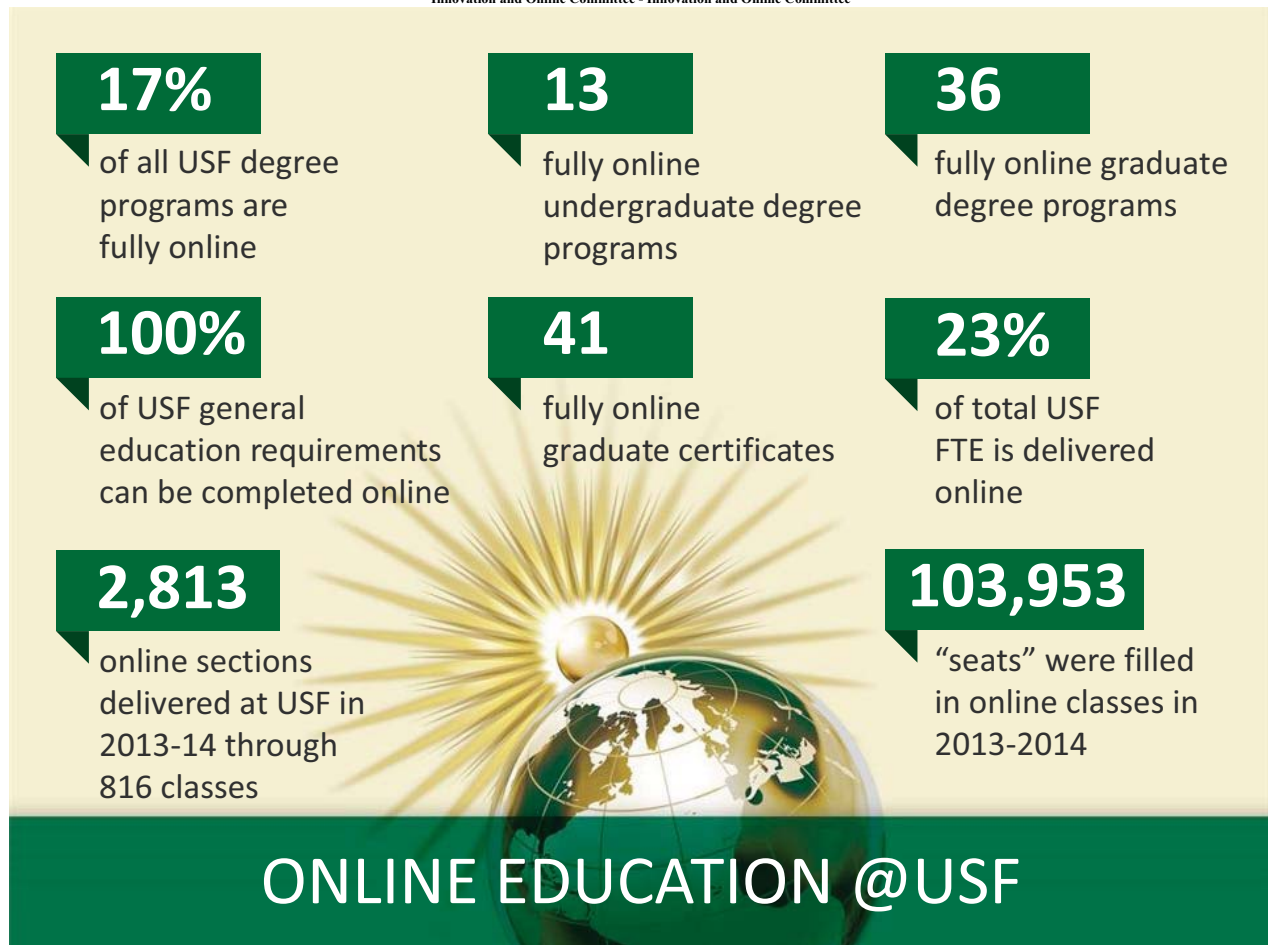
95



96

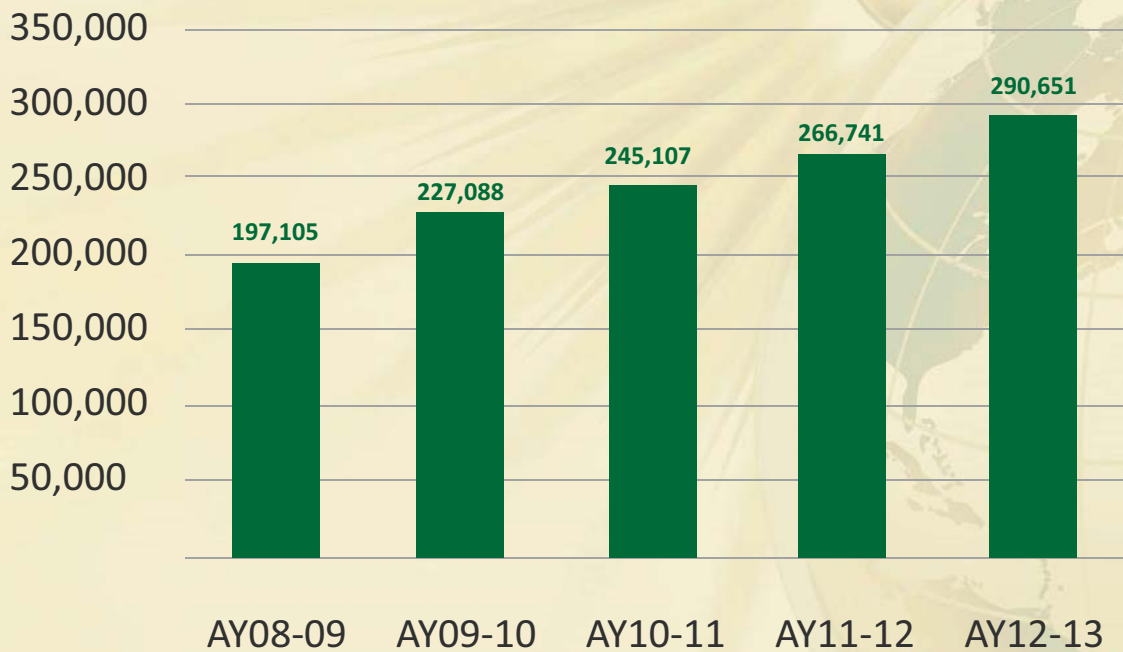


97



98

USF SCH Online Growth by Year



99

USF Online Earns Recognition



Best Online Programs

#36 USF Tampa Graduate Education Program

#26 USF Tampa Graduate Engineering Program

#91 USF ST. Petersburg Graduate Business Program



#25 Best Overall - top nonprofit and for-profit schools (2013)



#40 Top 100 Best Buy Colleges (2012)



Top 75 Best College Values (2014)

Online program development



Individual classes

Analyze unmet demand to ensure student access, progression and degree completion.

Gauge faculty expertise and department capabilities in adding high-demand online classes.

Provide instructional design, media, and technology support to create and launch online classes.



Full programs

Analyze the market to identify workforce gaps in online program offerings.

Determine USF's ability to create programs that meet market demands.

Create and launch programs in partnership with faculty and departments.

Continually evaluate performance to ensure long-term success.

101

State Funded vs. Self Sustaining



State Funded

- Can be delivered within existing E&G resource capacity



Self-Sustaining

- Will require additional resources beyond existing E&G support
- Must meet an identified market demand
- Must establish a feasible price point to cover full cost of design, development, instructional delivery, and assessment
- Must meet criteria for a positive financial return within an acceptable time frame

102

Tuition & Fees

Tuition & Fees for face-to-face and online classes are identical, with the exception of the added Distance Learning Fee



E&G Tuition & fees/SCH
Traditional delivery UG resident

\$211.19

E&G Tuition & fees/SCH
Traditional delivery GR resident

\$431.43

E&G Tuition & fees/SCH
Online delivery UG resident

\$261.19

E&G Tuition & fees/SCH
Online delivery GR resident

\$481.43

103

Training and Faculty Support



Teaching Online 101

- Certifying faculty for online instruction



In-Person Workshops

- Utilizing effective online teaching methods
- Using Canvas (LMS)



24/7 Technology Support

- Providing cutting-edge tools for online learning



104

Performance Measurements

Innovative Education @USF Assessment of Online Learning	Does not meet criteria	Meets some criteria	Meets most criteria	Meets all criteria
Class/program access				✓
Student learning outcomes				✓
Student success/performance				✓
Student satisfaction				✓
Instructor certified to teach online				✓
Instructional effectiveness				✓
Meets online class quality rubric				✓
Effective use of online teaching technologies				✓
Class/program material updated regularly				✓
Financial health of fully online programs				✓

105

Innovative Education: Moving Forward



Mobile-ready
classes

Creating global
classrooms



Proctoring pilot

Flexible,
modular delivery
improves time to
completion



Massive Open
Online classes
(MOOCs)





Current State of Online Education at UF

Joe Glover

Provost and Senior Vice President for Academic Affairs
University of Florida

Andy McCollough

Associate Provost for Teaching and Technology
University of Florida

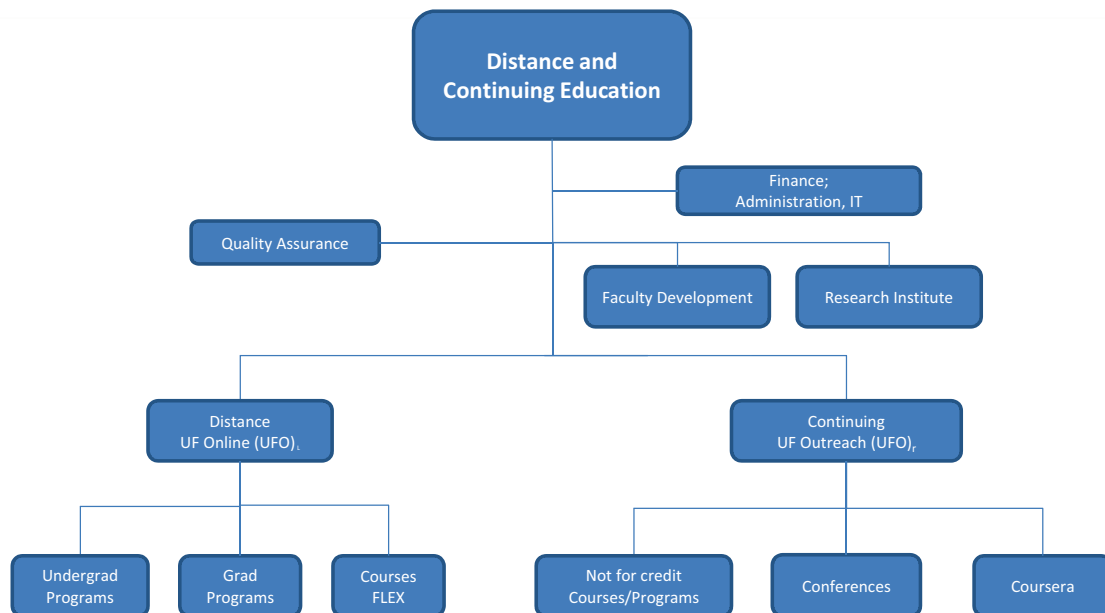
May 2014

Office of the Provost



108

Distance and Continuing Education



Office of the Provost



109

UF Programs Offered Fully Online Statistics

	#*	%	Requires on-campus work
UG	11	10.3	No
Master's	33	18.2	No
Doctoral	4	3.8	No
Prof	3	27.5	No
Total	51	12.5	

*These are unique degrees (CIPs). If the count was extended to major/specializations the total would be 94

Office of the Provost



110

Undergraduate Programs (UF Online)

- ▶ **Number of Programs: 11***
- ▶ **Number of Students: 100****
- ▶ **History:**
 - 1st Term, Spring 2014; migrated existing 2+2 programs
 - 24,000+ students in ten years

*5 of the total begin in August 2014

**1st term, 10 year forecast – 24,000



Office of the Provost



111

Majors (UF Online)

Become Available as Follows

- **Academic Year 2013-14**
 - Business Administration
 - Criminology & Law
 - Health Education & Behavior
 - Environmental Management
 - Sport Management
- **Academic Year 2014-15**
 - Biology
 - Computer Science
 - Geology
 - Psychology
 - Telecommunications
- **Academic Year 2015-16**
 - Accounting
 - Industrial Engineering
 - Geography
 - Nursing
 - Political Science
 - Sociology
- **Academic Year 2016-17**
 - Microbiology & Cell Science
 - Physiology & Kinesiology
 - Mechanical Engineering
 - Civil Engineering
 - Public Relations
 - Elementary Education

Lower Division Opportunities

- ▶ Most of the General Ed curriculum needed to satisfy state requirements is available fully online
 - To minimize duplication, these courses can be made available to students at all SUS and FCS institutions
- ▶ High School Dual enrollment opportunity
- ▶ Leveraging the learning objects (courses) created for UF Online
 - Comprehensive
 - High quality
 - User tested

Graduate / Professional Online Programs

- ▶ **Number of programs**
83
- ▶ **Number of students enrolled**
7063
- ▶ **Revenues last year – from self-funded graduate programs**
\$82 million (2013-14)

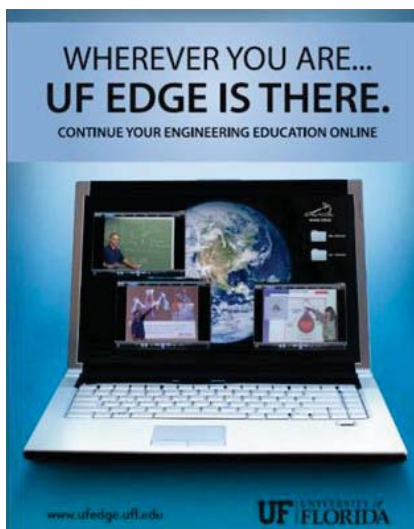
Online Graduate Programs

Working Professional (Internet) MBA (402)

The UF MBA Program was one of the first schools to offer a fully-accredited online degree. The UF MBA is regarded as one of the world's best by *The Economist* and *U.S. News & World Report*.



Online Graduate Programs



Engineering (EDGE) (656)

The UF College of Engineering is ranked as one of the top 25 in the nation by *U.S. News and World Report*. UF EDGE provides worldwide, online delivery of high quality, downloadable course lectures from our UF research active engineering professors

Office of the Provost



116

Online Graduate Programs

Forensic Science Online Master's (1546)

Winner of the Award of Excellence in Distance Education, the University of Florida provides online master's degrees, certificates and continuing education courses in the forensic sciences. Now in its second decade, the University of Florida's award winning Forensic Science Master's Program is the world's largest and most prestigious forensic science program, with over 1,000 graduates.



Office of the Provost



117

Online Graduate Programs

Pharm. D. Program (1015)

The UF College of Pharmacy is currently ranked among the top colleges and schools of pharmacy in the nation, by *US News & World Report*. The University of Florida's Working Professional Doctor of Pharmacy distance-learning program leverages the latest in multimedia technology to make distance-learning possible.



Office of the Provost

UF UNIVERSITY of FLORIDA

118

Recognitions

Internet MBA

Financial Times ranked as #2 in the world.

Best Online Bachelor's Programs

Recognized by *U.S. News and World Report* as #5 in the country.

Distance Programs (Best Online Colleges)

Ranked as #2 in the country by TBS and Yahoo Finance in 2014.

"Most people don't realize the University of Florida, highly regarded for its campus-based programs, has a substantial offering of online degree programs especially online master's degrees." James Barham, General Editor of *TheBestSchools.org*

Office of the Provost

UF UNIVERSITY of FLORIDA

119

What programs will be offered online?

Considerations

- **Viability of program**
 - Market research (Pearson Learning)
 - Student Demand
 - Cost recovery
 - Work Force needs

Tuition and Fees: Undergraduate

- The online undergraduate program (UF Online) is state funded, and tuition and fees are prescribed by statute.
- Tuition cannot exceed 75% of tuition (including tuition differential) for resident students.
 - UF resident undergraduates pay \$208.77 per SCH in tuition and fees. (Nonresidents pay \$951.34 per SCH)
 - UF Online students pay \$126.57 per SCH. (Nonresidents pay market rate determined by program.)

Tuition and Fees: Graduate

- Fully online graduate degree programs are self-funded. This is dictated by limited state funding and incentivized by UF RCM budgeting system.
- Tuition generally established on a cost recovery basis. Eighteen (18) Programs have moved to market rate tuition after review and approval by BOG
- Currently tuition per credit hour ranges from \$310 [PhD in Audiology] to \$1462 [MBA]

Training

- Substantial training and assistance in instructional design provided centrally
- Faculty creating a course funded through central administration are required to participate in training
- Faculty Development – Established a Faculty Institute and a Teaching Assistant Institute, consists of 10 modular online workshops which must be completed prior to course development and/or delivery

Performance Measures

- Graduation Rates
- Student Performance (SLOs)
- Cost Recovery/Excess Revenue (grad/prof)
- Quality Assurance Review
- Student Success Post - Graduation



FIU Online

FIU | Online
FLORIDA INTERNATIONAL UNIVERSITY
Connect Confidently.

126

Student Credit Hours in FIU Online



127



Milestones

- 1998 First online courses offered
- 2003 Online Master in Hospitality Management launched
- 2004 First fully online undergraduate degree program launched – RN to BSN
- 2005 FIU Online established
- 2005 All courses required for BBA available online including core curriculum
- 2009 Fully Online MBA launched
- 2009 Student Recruitment Call Center established
- 2013 13 undergraduate and 18 graduate fully online degree programs available
- 2014 FIU is selected to participate in Complete Florida

128

41%

of FIU students took
online classes in
2012-2013



13

Annual Faculty
Development Conferences

31

degree programs online
(18 graduate 13 undergraduate)



20%

of SCHs online
Fall 2013

681

FIU faculty taught
online classes in
2012-2013



915

Unique online
courses since
Fall 2012

129



Top Rankings

U.S. News World Report

- # 27 – Best Online Graduate Business Programs (2013)
- # 41 – Best Online Graduate Engineering Programs (2013)

Financial Times

Top 48 – Business Schools Offering Online Programs (2013)

TheBestSchools.org

21 – Best Online Colleges (2014)

GetEducated.com

16 – Best Affordable Masters in Management Online (2014)

BusinessMBA.org

9 – Top 25 Best Value Online MBA Programs (2013)

Fully Online Undergraduate Degree Programs 2013-2014

Rank	University	Degrees
1	Florida International University	13
2	University of West Florida	11
3	University of Florida	10
4	University of Central Florida	5
5	Florida State University	4
6	University of South Florida	3
7	University of North Florida	1
Total		47

Source: Florida Virtual Campus - <https://www.flvc.org/home>

FIU Online Organizational Structure



Staffing
(as of Spring 2014)

A&P	USPS	OPS	Total
77	14	41	132

132

Fully Online Undergraduate Degree Programs

Currently Available

Communication Arts
Criminal Justice
Early Childhood Education
Finance
Hospitality Management
Human Resources Management
Interdisciplinary Studies
International Business
Management
Marketing
Nursing
Psychology
Recreational Therapy

Will Launch Fall 2014

Health Services Administration
Management Information
Systems
Public Administration
Religious Studies
Sociology

Planned for Fall 2015

International Relations
Political Sciences
Elementary Education
History
Accounting

19% of undergraduate degree programs are offered fully online.

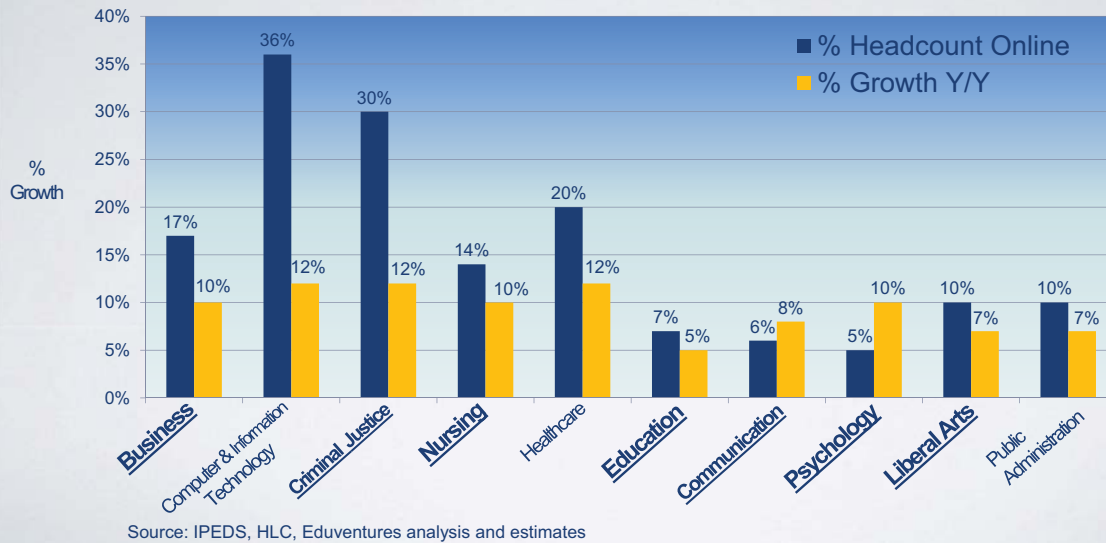
All fully online undergraduate degree programs do not require on-campus residency.

946 students enrolled in fully online undergraduate degree programs.

Most fully online undergraduate degree programs offered through Complete Florida.

All fully online undergraduate degree programs are state-funded.

Criteria for Selecting Fully Online Undergraduate Degree Programs



134

Undergraduate Cost Comparison

	Per Credit	Cost for 12 Credit Hours
Regular On Campus Course	\$203.59	\$2,592.35
Online Course for students not enrolled in a fully online degree program	\$256.92	\$3,232.31
Fully Online Degree Seeking Student (Semester fees of health, athletics and parking waived for students in fully online degree programs)	\$215.94	\$2,591.28

135

Fully Online Graduate Degree Programs Currently Available

State-Funded

MS in Criminal Justice
MS in Music Education
MS in Adult Education & Human
Resource Development
Master in Public Administration
Doctor of Nursing Practice*

Self-Sustaining

MS in Computer Engineering
Network Security
MS in Curriculum Instruction –
Curriculum Development
MS in Special Education
MS in Engineering Management

Market Rate

Corporate MBA
Healthcare MBA*
Master in International Business
MS in International Real Estate
MS in Human Resource
Management
MS in Hospitality Management
Executive MS in Hospitality
Management
MS in Construction Management
MS in Mass Communication:
Global Strategic Communications

20% of graduate degree programs are offered online.

Most of the fully online graduate degree programs are self-sustaining or market rate. All new versions or new offerings of fully online graduate degree programs are self-sustaining or market rate.

New online modality or new offerings of fully online graduate degree programs require feasibility study and Faculty Senate approval.

* Require on campus residency

Performance Measures

Undergraduate

- Retention rate
- Graduation rate
- Student satisfaction
- Enrollment targets
- Similar outcome assessment results

Graduate

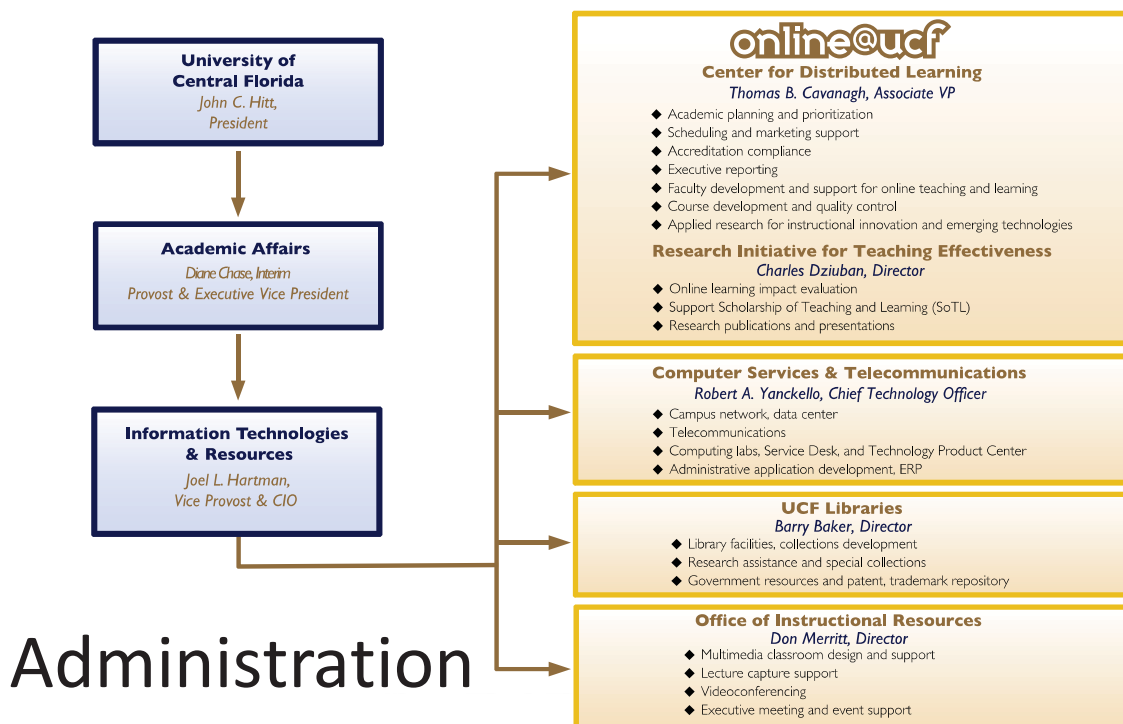
- Retention rate
- Graduation rate
- Student satisfaction
- Enrollment targets
- Similar outcome assessment results

University Goals

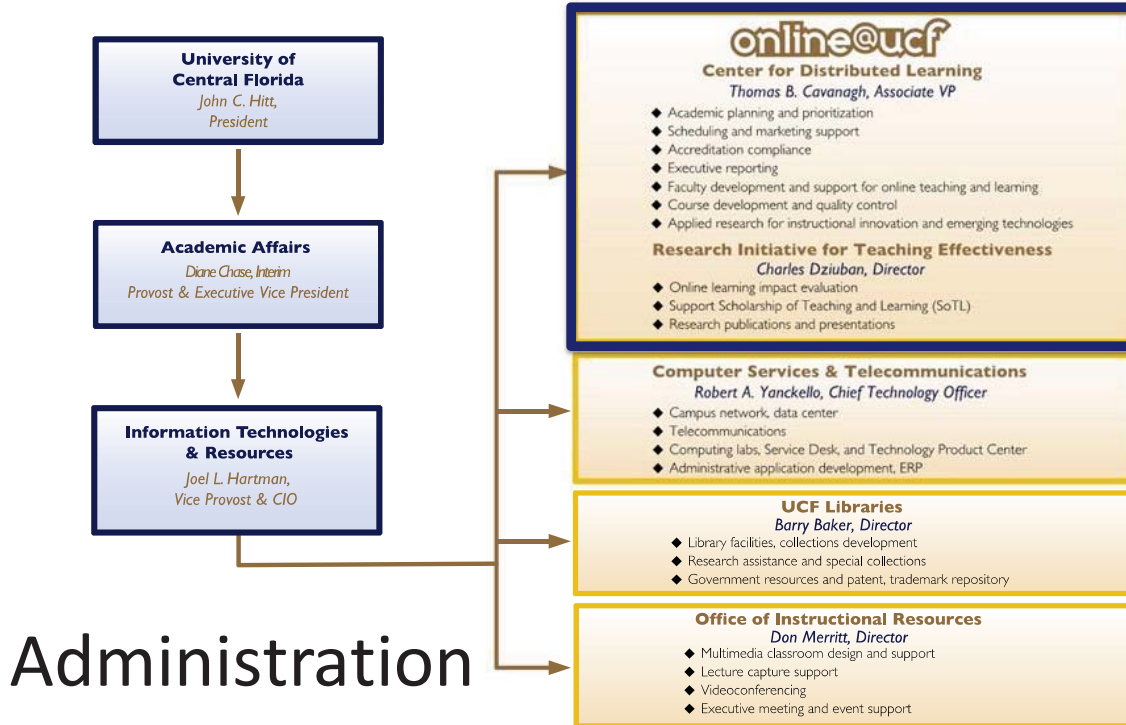
University Goal	Current Measure	2019-2020 Goal
% SCHs offered online	20.9%	40%
# of fully online undergraduate degree programs	13	50% of degree programs offered
# of fully online graduate degree programs	18	33% of degree programs offered



139



140



141

Online@UCF Personnel



142



Fully Online Programs

- Undergraduate degrees: 15 of 91 (16.5%)
- Graduate degrees: 24 of 86 (28%)
- Graduate certificates: 30 of 61 (49%)
- Undergraduate certificates: 2 of 36 (5%)
- Undergraduate minors: 17
- All Gen Ed requirements available online
- 1,657 fully online courses offered to date

143



Programs In Development

Undergraduate Programs

B.A.B.A Business Administration - 98%
 B.A. Humanities - (Philosophy, Religion, & Pop Culture Track) - 82%
 B.S.B.A Accounting - 72%
 B.S.B.A General Business - 72%
 B.S.B.A. Management - 72%
 B.A. Sociology - 71%
 B.S.B.A Marketing - 69%
 B.S.B.A. Finance - 68%
 B.S.B.A Real Estate - 68%
 B.A. Human Communication - 64%
 B.S. Health Informatics and Information Management - 64%
 B.S. Health Sciences 62 B.S.B.A Economics, Business - 61%
 B.S. English Language Arts Education - 61%
 B.S. Mathematics Education - 53%
 B.A. Art - 53%
 B.A. Philosophy - 50%
 B.S. Social Science Education - 50%

Graduate Programs

M.A. Exceptional Student Education - 100%
 PH.D Modeling and Simulation - 100%
 PH.D. Environmental Engineering - 100%
 MSEM Engineering Management - 100%
 M.S.E.E Electrical Engineering - 100%
 M.S.P.E Computer Engineering - 100%
 PH.D. Civil Engineering - 100%
 PH.D. Materials Science and Engineering - 95%
 M.ED. Elementary Education - 86%
 M.S. Modeling and Simulation – (1 Track) - 75%
 ED.S. Education - 75%
 PH.D. Computer Engineering - 75%
 M.P.A Public Administration – (2 Tracks) - 73%
 M.ED. Education Leadership - 73%
 D.N.P Nursing – (1 Track) - 70%
 ED.S. Educational Leadership - 67%
 PH.D. Industrial Engineering - 63%
 PH.D. Electrical Engineering - 63%
 M.S. Optics - 50%

144



Blended Learning Courses

- Blended learning combines fully online and classroom-based learning
- Typically 1/2 to 2/3 online, with reduced face-to-face classroom attendance
- 1,531 courses offered to date in blended format

UNIVERSITY OF CENTRAL FLORIDA

145



Enhanced Classroom Courses

- 47.6% of regular classroom courses are enhanced through use of online tools and techniques using the Learning Management System
(2,568 of 5,395 course sections for spring 2014)

UNIVERSITY OF CENTRAL FLORIDA

146

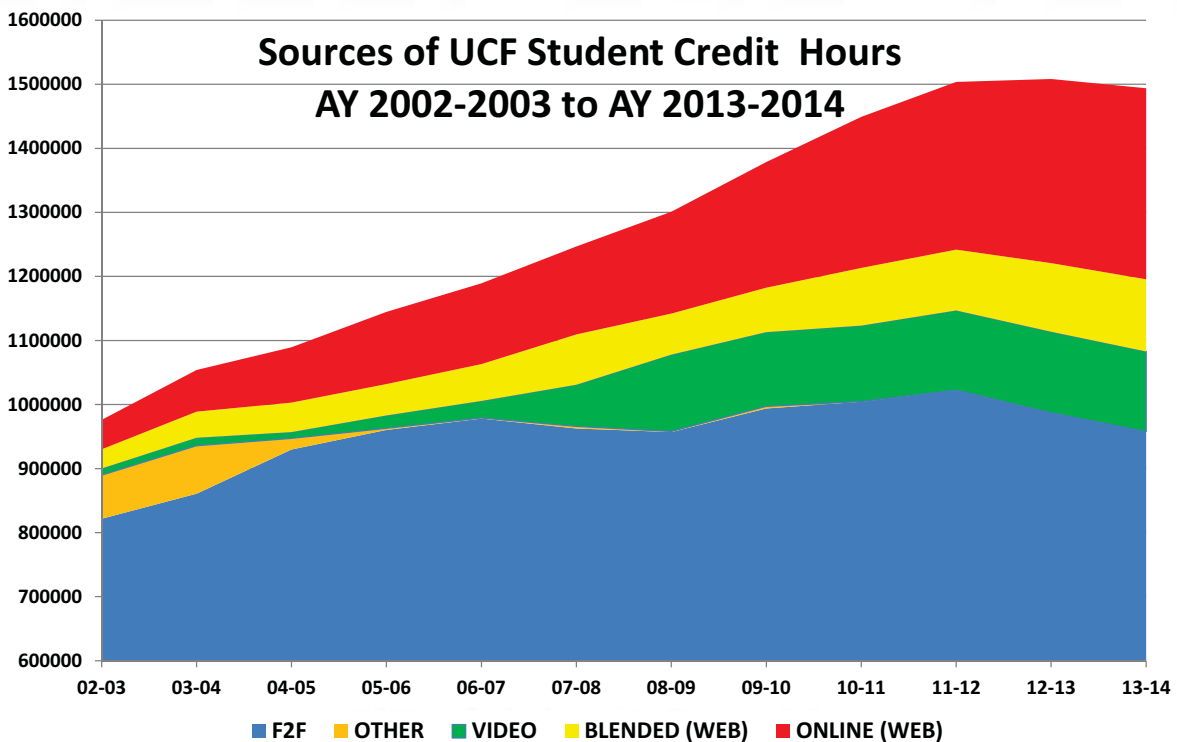


AY 2013-2014

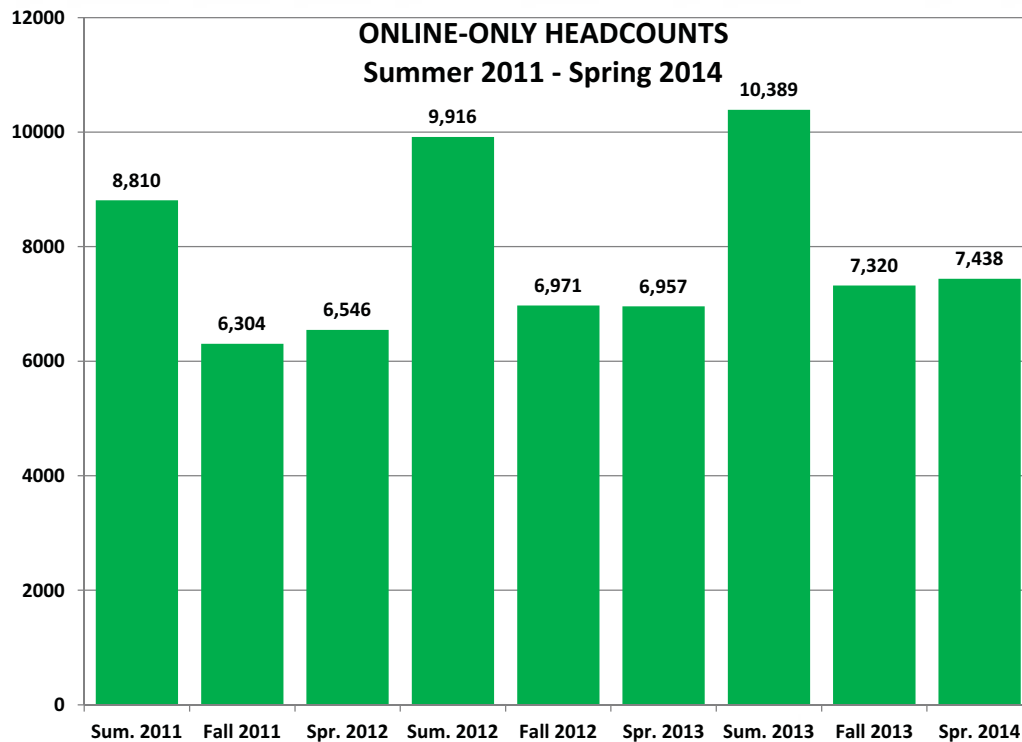
- 35.9% of total university SCH generated online
- 76.2% of all students took at least one fully online or blended learning course
 - 78.3% of all undergraduates (47,116)
 - 62.8% of all graduate students (6,469)

UNIVERSITY OF CENTRAL FLORIDA

147



148



149



Online Program Development

- Online program decisions are made by the respective colleges and departments
- I and my team hold planning meetings with every college dean and staff each fall and spring
- Each college has an online strategy, which is coordinated and supported centrally



College Engagement*

Colleges Over 50% SCH

- Nursing (62%)
- Grad (61.5%)
- UG Studies (58.6%)
- Health & Public Affairs (54%)
- Business Admin (51.7%)

Colleges Over 25% SCH

- Hospitality Mgmt (49.7%)
- Arts & Humanities (34.2%)
- Sciences (28.8%)
- Education (27.7%)

UNIVERSITY OF CENTRAL FLORIDA

*AY 2013-2014

151



Online Program Development

- Nearly all online programs are supported through regular tuition and state support
- Five are offered through UCF Continuing Education on a cost-recovery basis by request of the respective academic departments - Academic Affairs approval is required

UNIVERSITY OF CENTRAL FLORIDA

152



Online Tuition & Fees

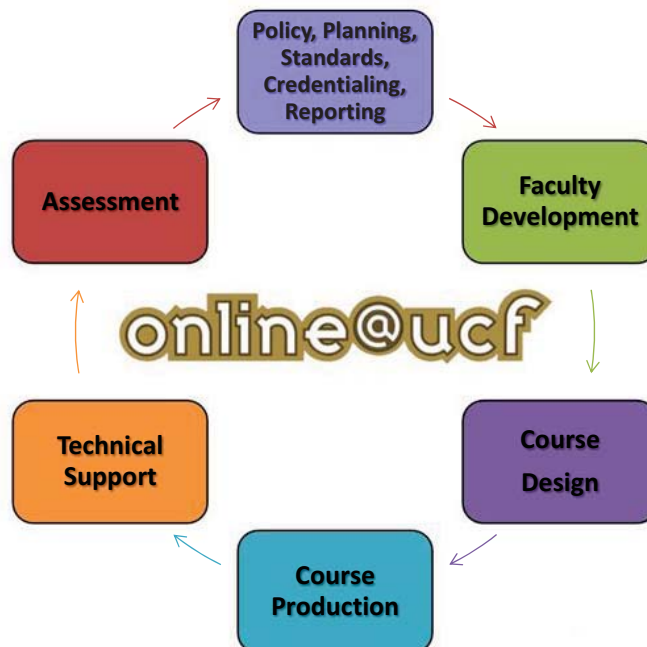
- Tuition and fees for online courses are identical to those for face-to-face courses with the exception that fully online courses carry a distance learning course fee

UNIVERSITY OF CENTRAL FLORIDA

153



UCF Online Quality Cycle



154



Faculty Development

- All faculty and teaching assistants are required to participate in extensive faculty development
- Each faculty member is assigned an instructional designer and supported by an extensive team of online learning specialists

UNIVERSITY OF CENTRAL FLORIDA

155



Faculty Development

Web Essentials	IDV Essentials	ADL5000	IDL6543
Available to faculty teaching “Web-enhanced” face-to-face courses	<u>Required</u> to teach lecture-capture video streaming courses	<u>Required</u> to teach existing online or blended courses	<u>Required</u> to design and teach original online or blended courses
Technology focus	Design and delivery Focus	Pedagogy, logistics, technology focus	Deeper design, delivery, and teaching focus
5 hrs.	8 hrs.	35 hrs.	80 hrs.

Ad hoc training, open labs, JIT resources, and advanced topics sessions



Core Performance Measures

- Quality (quality courses, excellent teaching, student success outcomes)
- Access (growth, convenience, flexibility)
- Student and faculty satisfaction
- Cost-effectiveness and scalability

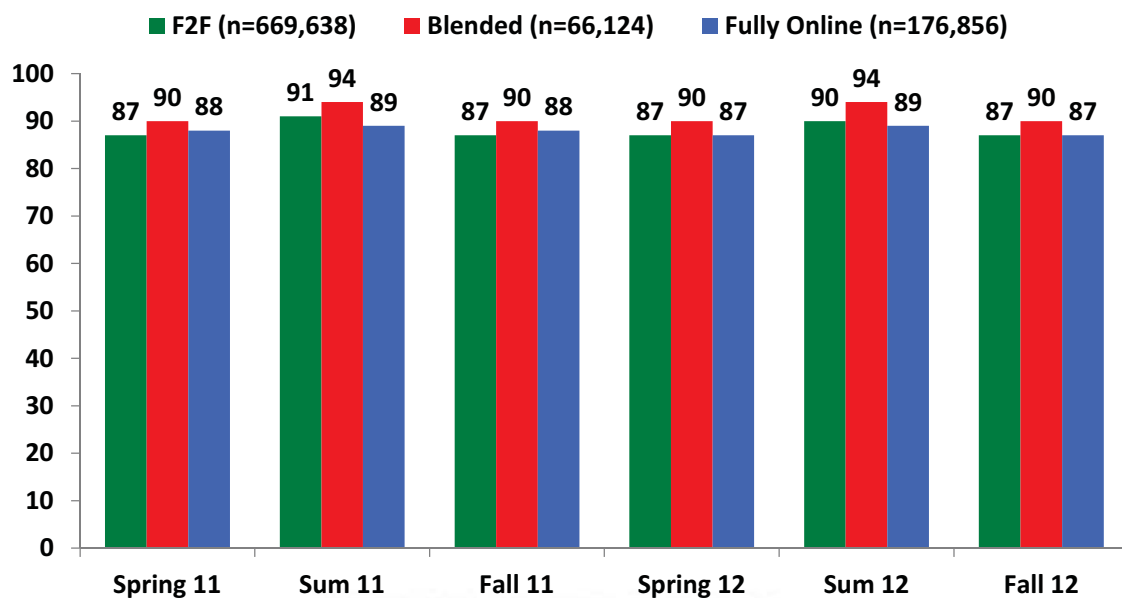
UNIVERSITY OF CENTRAL FLORIDA

157

Innovation and Online Committee - Innovation and Online Committee



Student Success



158



Online Learning Research

- UCF's Research Institute for Teaching Effectiveness (RITE) has been assessing online learning since 1996
- RITE staff have produced 2 books, 20 book chapters, 28 journal articles, and 66 global presentations; 100s of faculty journal articles
- Over 5,000 citations in professional literature

UNIVERSITY OF CENTRAL FLORIDA

159



A Platform for Innovation

- Adaptive, mastery-based learning
- Predictive analytics ("Big Data")
- Alternative credentialing (badges)
- National offerings
- Non-traditional scheduling
- MOOCs

UNIVERSITY OF CENTRAL FLORIDA

160



MOOCs

UCF FREE

International Health Systems: Incorporating Sustainability...

This course will explore the different dimensions of sustainability in healthcare and ways to incorporate those ideas into the managerial and quality improvement...

Bernardo Ramirez, M.D., M.B.A.
Professor of International Health System Management

[Learn More](#)

UCF FREE

Tourism Industry Analysis

This course examines basic and broad knowledge of economic impact modeling and Tourism Satellite Accounts. Participants will be guided through...

Dr. Tadayuki Hara
Associate Dean of Finance and Administration

[Learn More](#)

UNIVERSITY OF CENTRAL FLORIDA

161



EDUCAUSE

Search

RESEARCH
AND PUBLICATIONS

CONFERENCES
AND EVENTS

CAREER
DEVELOPMENT

FOCUS AREAS
AND INITIATIVES

CONNECT
AND CONTRIBUTE

ABOUT
EDUCAUSE

[Home](#) > [Focus Areas and Initiatives](#) > [Teaching and Learning](#) > [EDUCAUSE Learning Initiative](#) > [Events](#) > [UCF/EDUCAUSE BlendKit 2014](#)

ELI

UCF/EDUCAUSE BLENDKIT 2014

 Five-Week Course
 Beginning April 21, 2014

BlendKit 2014: Becoming a Blended Learning Designer MOOC

Blended learning (the strategic combination of face-to-face and online learning experiences) is growing in popularity within higher education and K-12 settings around the world. The goal of the BlendKit2014: Becoming a Blended Learning Designer MOOC is to provide facilitated assistance to faculty members and instructional designers in developing and designing blended courses through (1) a consideration of key issues related to blended learning and (2) practical step-by-step guidance in producing materials for a blended course (e.g., developing design documents, creating content pages, and receiving peer review feedback at one's own institution).

History

A Next Generation Learning Challenges (NGLC) grant in 2011 leveraged the University of Central Florida's expertise to create the Blended Learning Toolkit as a free, open resource for educational institutions interested in developing or expanding their blended learning initiatives. The American Association of State Colleges and Universities (AASCU), UCF's grant partner, agreed to use its membership to distribute the toolkit and support new course models. The BlendKit course emerged from the grant to assist educators in designing blended courses and has supported two open, online cohorts since 2012.

BlendKit 2014 MOOC

The next offering of the free MOOC, BlendKit 2014: Becoming a Blended Learning Designer, begins on April 21 and lasts five weeks. The open course will be offered at no cost.

Certification

REGISTER

FACILITATORS

Dr. Kelvin Thompson
Associate Director, UCF Center for Distributed Learning and Graduate Faculty Scholar, UCF College of Education and Human Performance

Dr. Linda Futch
Department Head, Course Design and Delivery, UCF Center for Distributed Learning

Blendkit 2014: a partnership of
EDUCAUSE and the University of
Central Florida.

UCF

162



Online@UCF Recognition

- Sloan Consortium

- Excellence in Institution-Wide Online Education Award (2012)
- Mayadas Leadership Award (2011)
- Excellence in Online Teaching Award (2009)
- Excellence in Online Teaching Award (2008)
- Ralph E. Gomory Award for Quality Online Education (2008)
- Outstanding Achievement in Online Education by an Individual (2005)
- Excellence in Faculty Development for Online Teaching (2003)

UNIVERSITY OF CENTRAL FLORIDA

163



Online@UCF Recognition

- Tegrity McGraw-Hill

- President's Award for Vision and Leadership (2012)

- EDUCAUSE

- Teaching & Learning Award for Online Program (2005)

- USDLA

- Excellence in Distance Learning Program Award (2000)

- APQC

- Faculty Development Award for Teaching w/ Technology (1998)

UNIVERSITY OF CENTRAL FLORIDA

164

online@ucf

BOG Innovation & Online Committee – May 8, 2014



UNIVERSITY OF CENTRAL FLORIDA



OFFICE OF DISTANCE LEARNING
FLORIDA STATE UNIVERSITY

Distance.fsu.edu

Dr. Susann Rudasill, Director
Office of Distance Learning



166

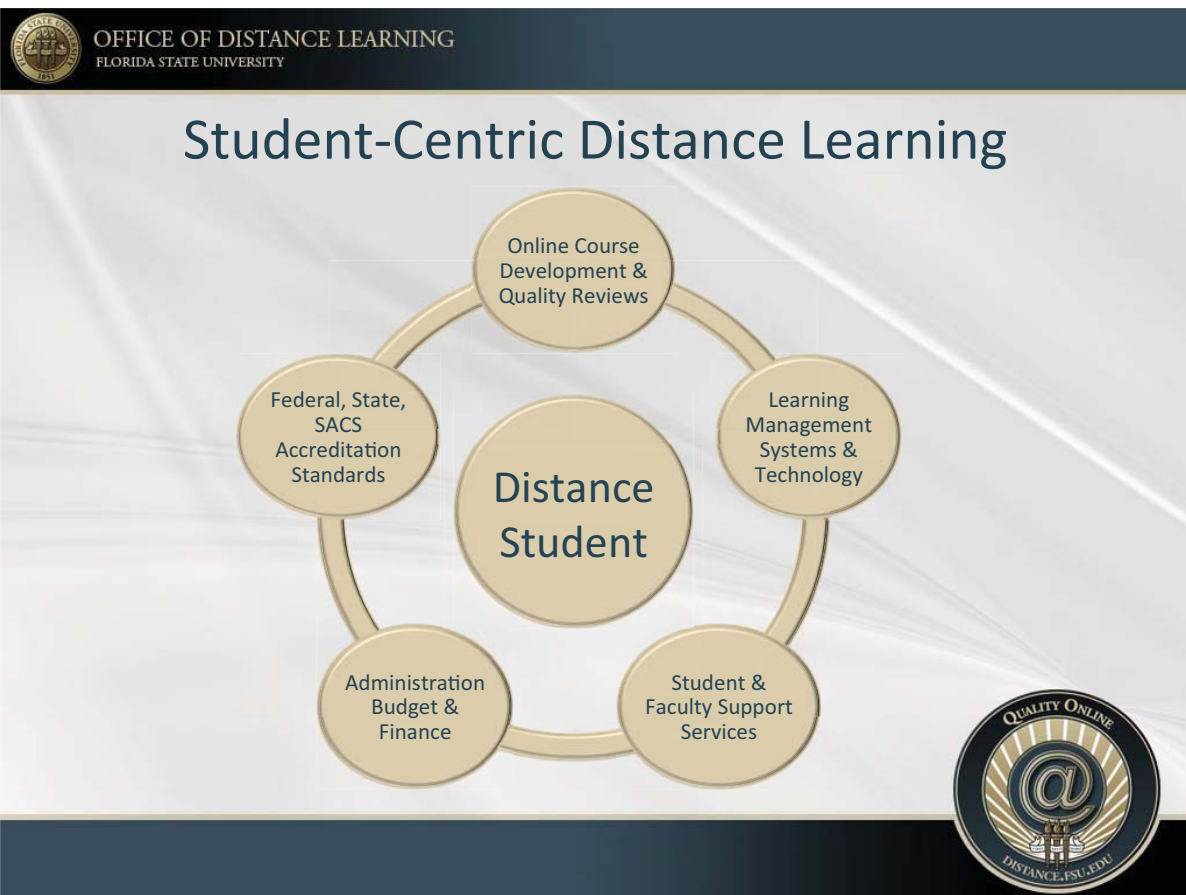


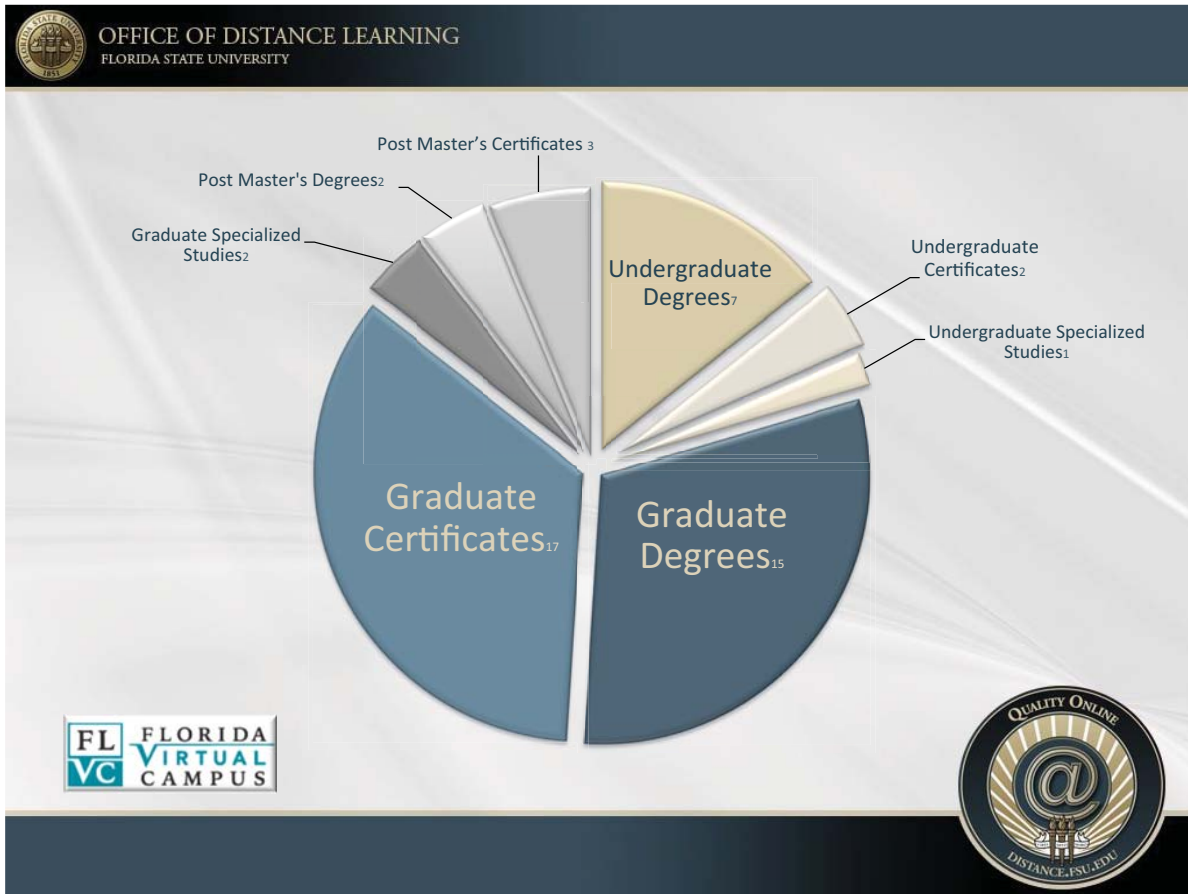
OFFICE OF DISTANCE LEARNING
FLORIDA STATE UNIVERSITY

FLORIDA STATE UNIVERSITY ONLINE
QUALITY, CONTENT & COMMUNITY

[Live Link](#)

167





170

OFFICE OF DISTANCE LEARNING
FLORIDA STATE UNIVERSITY

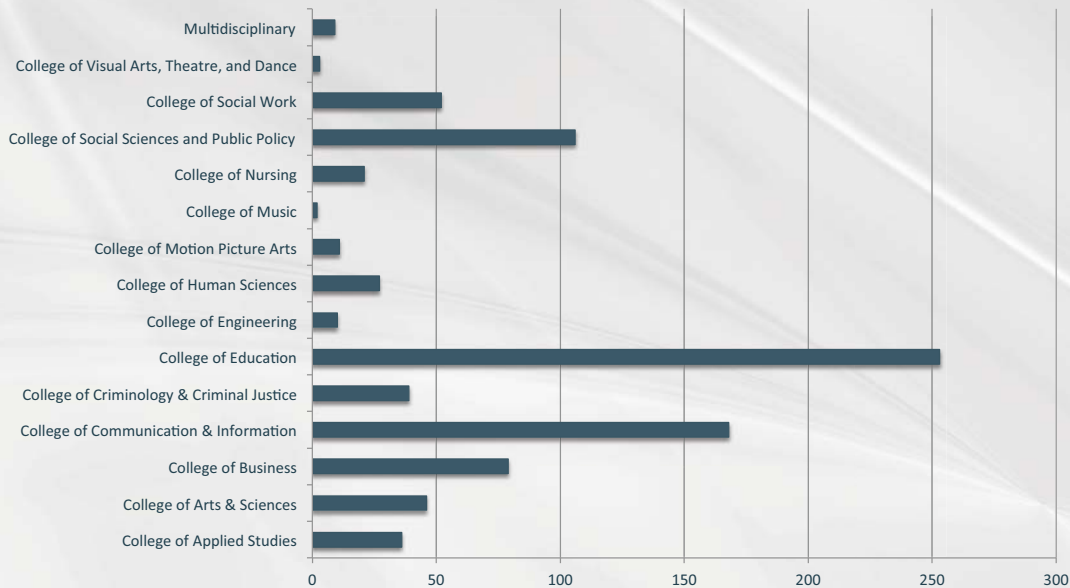
Fully Online Distance Programs

<p>Undergraduate Degrees: Computer Science, BA, BS Criminology, BS Interdisciplinary Social Science, BS Public Safety & Security, BS major in Law Enforcement Intelligence Public Safety & Security, BS major in Law Enforcement Operations Public Safety & Security, BS major in Police Science</p> <p>Undergraduate Certificates: Emergency Management Multicultural Marketing</p> <p>Undergraduate Specialized Studies: Criminology</p> <p>Graduate Degrees: Business Administration, MBA Communication & Science Disorders, MS Criminology, MS Educational Leadership, MS Information Technology, MS MS major in Instructional Design MS major in Open & Distance Learning MS major in Performance Improvement & HR Development Library and Information Studies, MS Management, MS Management Information Systems, MS Nurse Educator, MS Nurse Leader, MS Social Work, MSW Special Education, MS</p>	<p>Graduate Certificates: Coaching Communication Science and Disorders Bridge Emergency Management Event Management Geographic Information Systems Human Performance Technology Information Architecture Institutional Research Leadership and Management Leadership in Executive and Administrative Development Multicultural Marketing Online Instructional Development Project Management Reference Services Sales Management School Library and Media Leadership Youth Services</p> <p>Graduate Specialized Studies: Blended and Online Learning and Technology (BOLT) Business Professional Specialization</p> <p>Post Master's Degrees: Educational Leadership, Specialist Library and Information Studies, Specialist</p> <p>Post Master's Certificates: Modified Program in Educational Leadership/Administration Nurse Educator Nursing Leadership</p>
--	---

171



862+ Courses across 15 Colleges



172



70+ Courses Currently in Development

Foundation Engineering	Practicum in Family & Child	History of Florida
Traffic Engineering	Sciences Concepts of Management	Adulthood & Aging
Civil Engineering	Organizational Behavior	Nutrition and Sports
Entrepreneurial Practices	Theories & Methods of Offender	The Science of Nutrition
Environmental Engineering	Treatment	Intro To Educational Technology
Chemistry	Sport and Film	Nineteenth Century Europe
Digital History	World Cities	Recreation, Activities Leadership
International Dev. & Social Change	Pavement Engineering,	Recreation Program Design
Commercial Rec. & Tourism	Community Correction	Criminal Justice Administration
Sociology of Religion	Religion and Crime	The Individual and Society & Drugs
Politics & Society	Religion of South Asia	Drug Users and Justice System
Leadership & Supervision	Bioethics	Comparative Criminology
Managing Special Events	Analysis of Economic Data	Intro to Political Philosophy
Sport History	Economics of Art and Culture	Intro to Philosophy
Contemporary Art	Learning Through Game Design	Philosophy of Race, Class, &
Entering the Public Sphere	Basic Market Concepts	Gender Contexts for Middle
Courts and Social Policy	Multinational Business Operations	Childhood & Adolescents
Introduction to World Religions	Coral Reef Ecology	Web Presentations
Social Problems	Bridge Engineering	Art Appreciation
Sports and Society	Timber Design	Family Problems & Cities in Society
Diffusion of Sustainable Design	Nature of Florida	

173



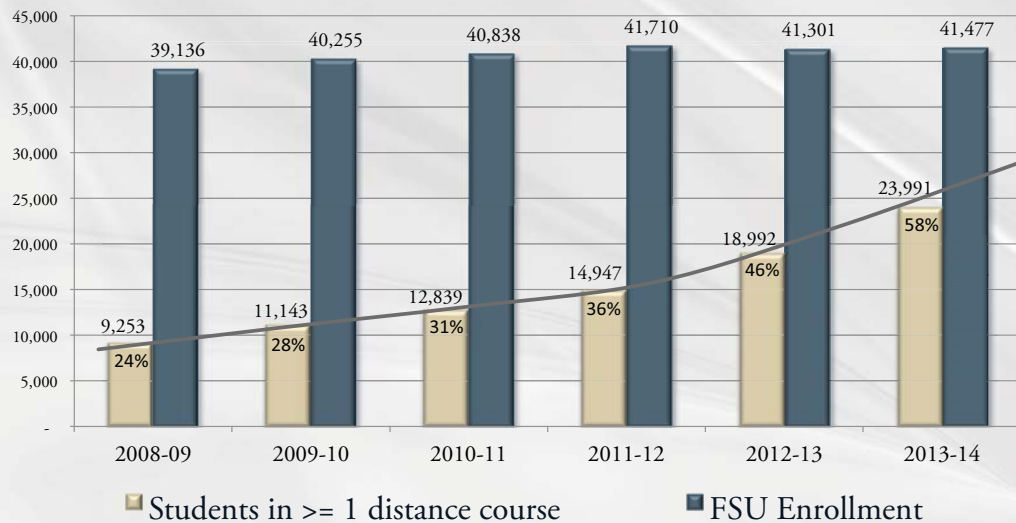
Distance Student Credit Hours Growth



174



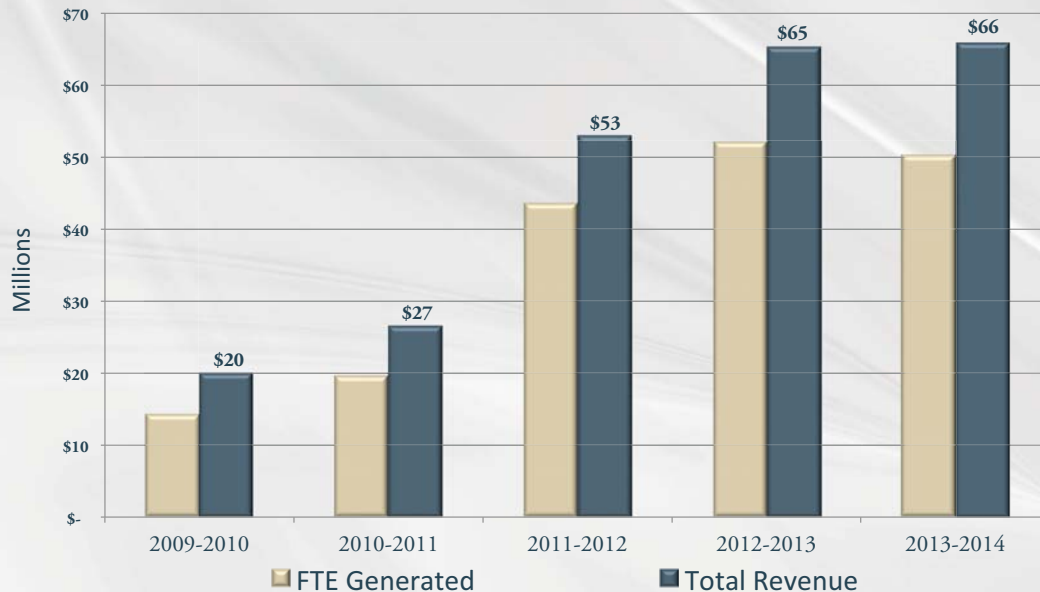
FSU Distance Enrollment Growth



175



Distance Revenue Growth



176



Determinates of Funding Type

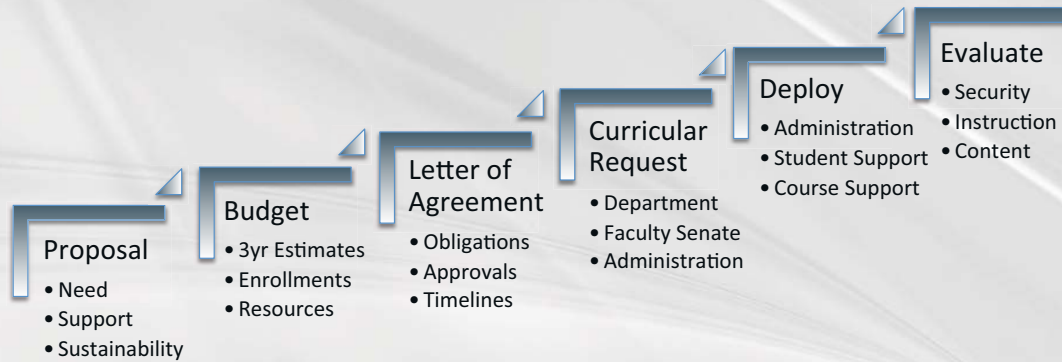
- ✓ Statutory Requirements
- ✓ Distance Learning Policy
- ✓ Budget Office Guidelines
- ✓ Auxiliary Committee Review
- ✓ External & Internal Audits
- ✓ Annual Review of DL Fees



177



Development Process



178



Policies Regarding Tuition and Fees

- ✓ Fundable tuition is credited to the department
- ✓ Distance fees are deposited into auxiliary accounts centrally managed by Academic Affairs and ODL
- ✓ Expenditures from DL auxiliary accounts must be related to the program or course for which the fees were collected
- ✓ DL fees must not exceed the cost to develop and maintain the DL program or course



179



FSU Tuition and Fees (per credit hour)

Undergraduate	On-Campus	Online	Graduate	On-Campus	Online
State Fees			State Fees		
Tuition	\$105.07	\$105.07	Tuition	\$403.51	\$403.51
Financial Aid	\$5.25	\$5.25	Financial Aid	\$20.17	\$20.17
Capital Improvement Trust Fund	\$4.76	\$4.76	Capital Improvement Trust Fund	\$4.76	\$4.76
Total State Fees	\$115.08	\$115.08	Total State Fees	\$428.44	\$428.44
Local Fees			Local Fees		
Athletics	\$7.90	\$0.69	Athletics	\$7.90	\$0.69
Activities & Services	\$12.86	\$9.88	Activities & Services	\$12.86	\$9.88
Student Health	\$13.97	\$-	Student Health	\$13.97	\$-
Total Local Fees	\$34.73	\$10.57	Total Local Fees	\$34.73	\$10.57
Other Mandatory Fees			Other Mandatory Fees		
Tuition Differential	\$49.59	\$49.59	Tuition Differential	\$0.00	\$0.00
Transportation Access	\$8.90	\$-	Transportation Access	\$8.90	\$-
Student Facilities Use Fee	\$2.00	\$-	Student Facilities Use Fee	\$2.00	\$-
Technology	\$5.25	\$5.25	Technology	\$5.25	\$5.25
Total Mandatory Fees	\$65.74	\$54.84	Total Mandatory Fees	\$16.15	\$5.25
Total Resident Fees	\$215.55	\$180.49	Total Resident Fees	\$479.32	\$444.26
Distance Learning Fee*		variable	Distance Learning Fee*		variable
Per Semester - Student Facilities Use Fee		\$20.00	Per Semester - Student Facilities Use Fee		\$20.00
Nonresident			Nonresident		
Total Resident Fees	\$215.55	\$180.49	Total Resident Fees	\$479.32	\$444.26
Nonresident Fee	\$481.48	\$481.48	Nonresident Fee	\$601.34	\$601.34
Nonresident Student Financial Aid Fee	\$24.07	\$24.07	Nonresident Student Financial Aid Fee	\$30.06	\$30.06
Distance Learning Fee*		variable	Distance Learning Fee*		variable
Per Semester - Student Facilities Use Fee		\$20.00	Per Semester - Student Facilities Use Fee		\$20.00

*Distance learning fees vary by program/course

180



Examples of Distance Fees by Program

Undergraduate Programs/Courses Fundable Distance Learning Fees Per Credit Hour

Undergraduate Degree Programs	2011-12	2012-13	2013-14
Computer Science PCC	\$100.00	\$90.00	\$90.00
Interdisciplinary Social Science	\$70.00	\$70.00	\$90/\$70
Nursing Baccalaureate Clinical	\$100.00	\$100.00	\$100.00
Public Safety & Security PCC	\$45.00	\$45.00	\$45.00
School of Teacher Education	\$70.00	\$40.00	\$40.00
Graduate Degree Programs			
Civil/Environmental Engineering		\$83.00	\$83.00
Communication Science & Disorders	\$75.00	\$73.00	\$73.00
Educational Leadership	\$80.00	\$80.00	\$70.00
Higher Education General Administration	\$70.00	\$70.00	\$70.00
Industrial Engineering		\$108.00	\$108.00
Instructional Systems	\$70.00	\$72.00	\$70.00
Library & Information Studies	\$88.00	\$88.00	\$88.00
Master's in Criminal Justice	\$100.00	\$110.00	\$120.00

181



OFFICE OF DISTANCE LEARNING
FLORIDA STATE UNIVERSITY

Market Tuition Rate Graduate Programs

Graduate Degree Programs	2011-12	2012-13	2013-14
CCI Project Management		\$795.00	\$795.00
Criminal Justice Master's		\$513.34	\$553.70
Instructional Systems		\$544.00	\$544.00
Library & Information Studies	\$515.00	\$530.00	\$513.00
Business Administration (MBA)	\$700.00	\$750.00	\$750.00
Master's Information Systems (MIS)	\$700.00	\$750.00	\$750.00
Risk Management Insurance (RMI)	\$700.00	\$600.00	\$600.00
Communication Science Disorders (SCSD)		\$463.00	\$463.00
Master's Social Work	\$625.00	\$625.00	\$594.82



OFFICE OF DISTANCE LEARNING
FLORIDA STATE UNIVERSITY

Faculty, Mentor, Student Training

ONLINE MENTOR TRAINING COURSE
Do you want to be a good online mentor?
Are you looking for a training opportunity for your online mentor?
The Office of Distance Learning offers a 4-week self-paced online training course for online mentors at Florida State University. This training provides online mentoring strategies, addresses FSU policies, and provides guidance and best practices for using Blackboard™ tools.

myCampus Blackboard Upgrade Center
¿Por Qué FSU En Linea?

ONLINE INSTRUCTOR TRAINING LEVEL 1
The Office of Distance Learning provides support for Florida State University faculty who are teaching for the first time online courses. This training course provides basic information to help new online professors. A certificate of completion will be issued when you successfully pass the quizzes for all units.

LESSONS
Introduction to Online Mentoring
• The Mentor Role
• Characteristics of Online Students
• Successful Online Students
• FSU Policies

Managing Online Communication & Discussion
• Establishing Communication & Interaction
• Selecting Proper Communication Modes
• Using Email and Managing Email
• Utilizing and Managing Discussion Boards
• Facilitating Online Work and Collaboration

UNITS
Online Instructor Qualities
• Online Instructor Role
• Time Management
• Blackboard Training

Managing Online Communication
• Communication Modes
• Communication Styles
• Advanced Strategies
• Discussion Boards
• Group Collaboration

Testing and Assessment
• The Assignment Tool
• Rubrics and Surveys
• Quiz Center
• Blackboard
• LTI Exams

distance.fsu.edu





Performance Measures

- ✓ Online Instructor & Mentor Certification
- ✓ Quality Matters™ reviews of instruction
- ✓ Student and faculty surveys
- ✓ Faculty workshops and consultations
- ✓ Student success – completion & placement



Comparison of Online to On-Campus Completion Rates

															% Passed "C" or Better
Fall 2011	A	A-	B	B+	B-	C	C+	C-	D	D+	D-	F			
Distance Learning	1851	524	316	308	121	51	64	33	28	13	1	121	94.3%	3.9% higher	
FSU Main Campus	44731	17624	23707	14550	10017	10536	6684	4112	2794	1124	808	4764	90.4%		
Spring 2012	A	A-	B	B+	B-	C	C+	C-	D	D+	D-	F			
Distance Learning	1795	532	242	319	90	66	69	31	13	10	4	104	95.1%	4.0% higher	
FSU Main Campus	45476	16858	23211	13406	9276	9752	6091	3689	2457	991	736	4371	91.0%		
Summer 2012	A	A-	B	B+	B-	C	C+	C-	D	D+	D-	F			
Distance Learning	1472	373	229	270	66	60	37	23	6	8	4	41	96.8%	5.1% higher	
FSU Main Campus	13423	4971	6476	3910	2717	2762	1690	1027	732	275	158	1055	91.7%		
Fall 2012	A	A-	B	B+	B-	C	C+	C-	D	D+	D-	F			
Distance Learning	1997	557	275	323	114	75	60	30	18	11	9	96	95.4%	4.5% higher	
FSU Main Campus	45940	17648	24488	14162	9719	10477	6433	3986	2784	1087	755	4274	90.9%		
Spring 2013	A	A-	B	B+	B-	C	C+	C-	D	D+	D-	F			
Distance Learning	1706	536	298	335	103	88	65	30	20	8	6	118	94.5%	3.7% higher	
FSU Main Campus	45022	16323	22134	13061	8702	9495	5927	3593	2500	1010	661	4491	90.8%		
Summer 2013	A	A-	B	B+	B-	C	C+	C-	D	D+	D-	F			
Distance Learning	1293	410	248	219	70	65	53	15	14	9	5	67	95.5%	3.9% higher	
FSU Main Campus	12563	4708	6418	3928	2586	2696	1708	1089	665	262	164	996	91.6%		

Data Source: FSU Institutional Research



Goals & Resources for Growth

- ✓ Support growth with DL fees and E&G allocations
- ✓ Support new technology with Tech fees
- ✓ Continue QM certification of faculty reviewers
- ✓ Grant Tuition waivers to attract & support GS mentors
- ✓ Expand student services to improve student success
- ✓ Secure private funding for innovative instruction
- ✓ Collaborate & partner with other institutions

Presented to the
Innovation and Online Committee

Len Roberson

187



2

Online Education at UNF

Guiding Principles



3

189

Organizational Structure for Distance / Online Education

Academic Affairs / Provost

Associate Vice President of Academic
Technology & Innovation

Office of Distance
Education

Center for Instruction &
Research Technology



4

190

Distance Programs

Bachelors (2%)	Masters (14%)	Doctorate (33%)	Certificate (33%)
RN-BSN (26)	M. Ed., Autism +	DNP (20)	Early Childhood (Gr)
	M.Ed., Instructional Technology (26)		Sports Management (Gr)
	MS Nutrition & Dietetics +		TESOL (GR)
	MS, ASL-English Interpreting * (15)		

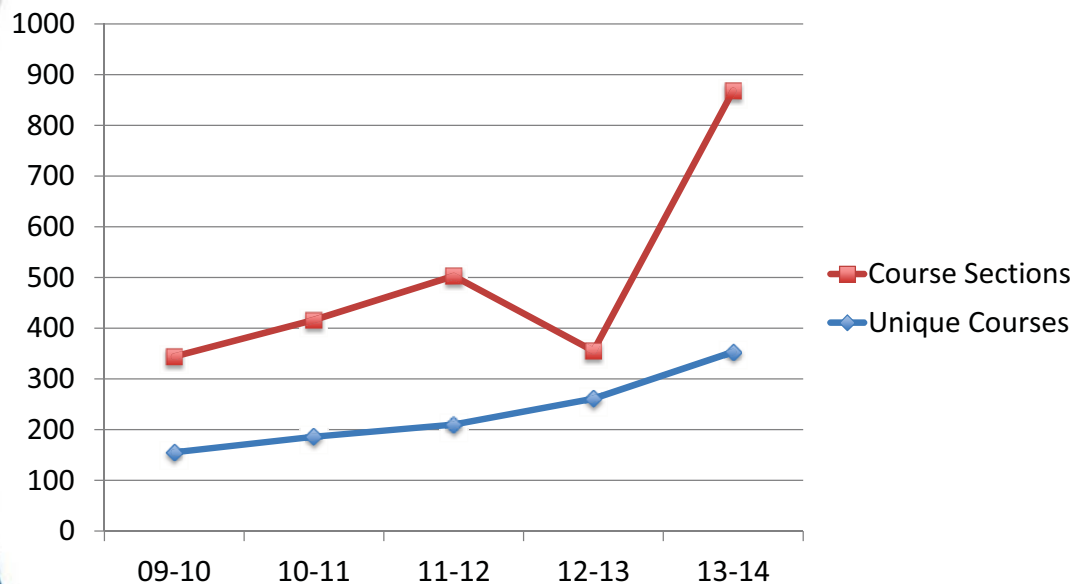
* = Some face-to-face required

(# represents total # of graduates) + = new program, no graduates to date

5

191

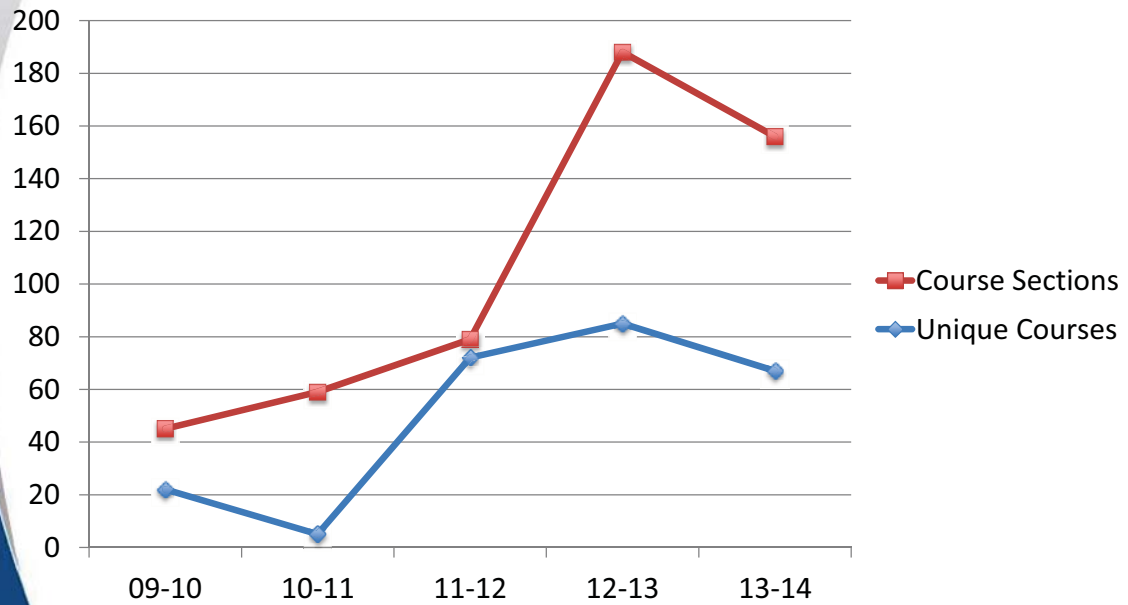
DL Courses at UNF



6

192

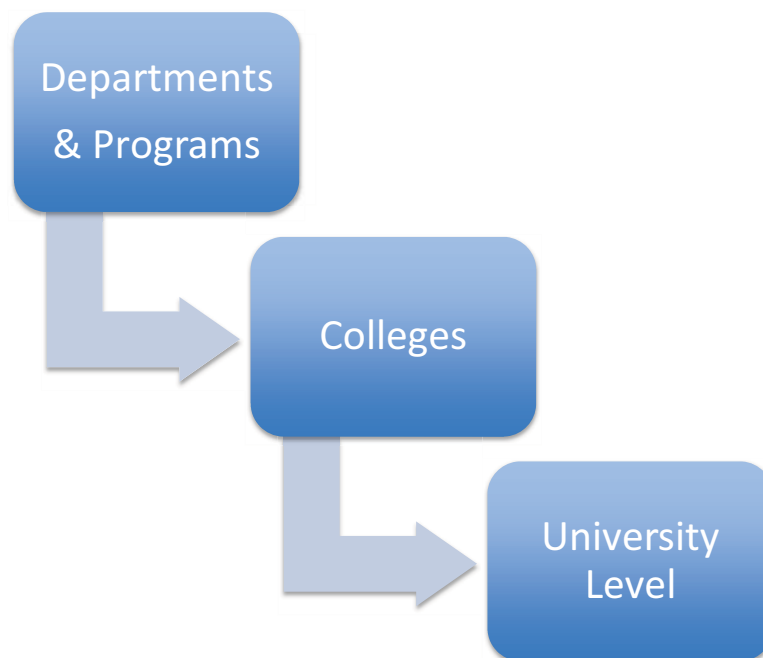
Hybrid/Blended Courses at UNF



7

193

Programs & Funding - Process



8

194

Tuition

Currently no unique policies regarding Online tuition & fees.

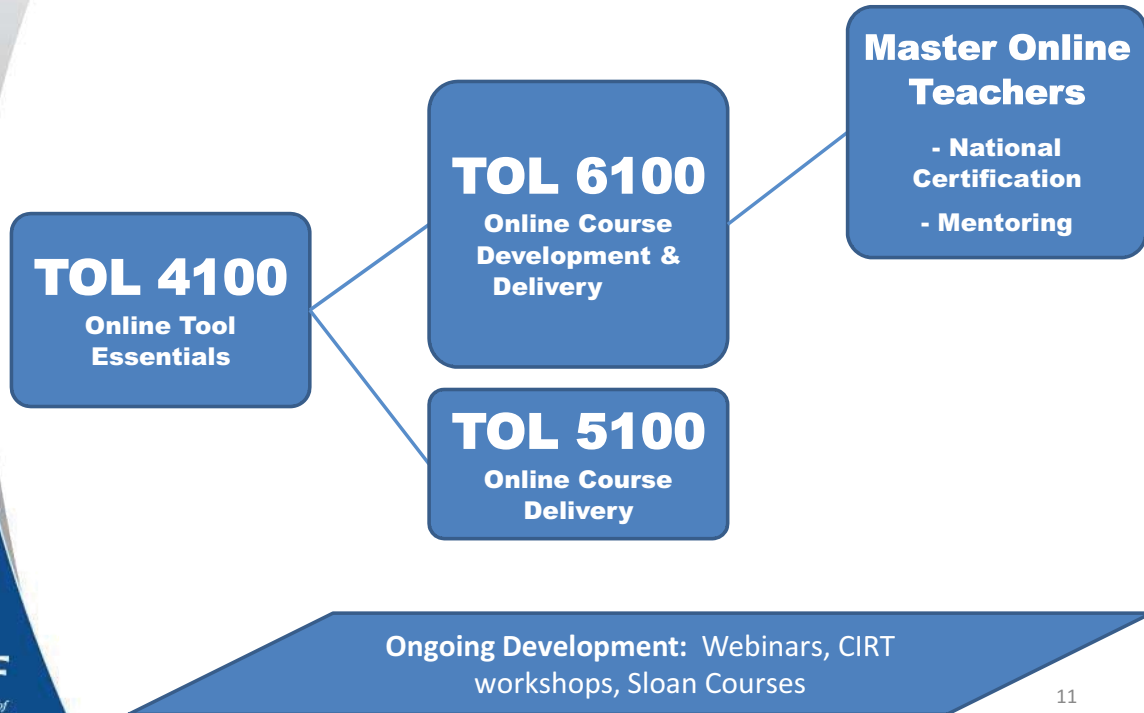
Programs	Tuition
DNP (state-funded), Interpreting	Unique Program Tuition + fees (including DL fee)
M.Ed. Autism, MS Nutrition, DNP	Market Rate Tuition + DL fee + select fees
Certificates, M.Ed. Instructional Technology	Traditional Tuition + fees (including DL fee)
RN-BSN	Cost Recovery

Tuition

Programs	Tuition, Online	Tuition, On Campus
DNP (state-funded)	\$558.41 Unique Program Tuition + fees (including DL fee)	\$523.41 (No DL fee)
M.Ed. Autism, (Market Rate)	\$435.44 Market Rate Tuition + DL fee + select fees	\$492.30
MS Nutrition & DNP(Market Rate)	\$525.74 Market Rate Tuition + DL fee + select fees	\$492.30 – Nutrition \$523.41 - DNP
Certificates, M.Ed. Instructional Tech., M.S. Interpreting	\$527.30 Traditional Tuition + fees (including DL fee)	\$492.30 (No DL fee)
RN-BSN	\$285.00 Cost Recovery	\$211.75

Faculty Development & Training

Currently, faculty are not required to undergo training.



11

197

Performance

- Use standard performance measures
 - Student Course Evaluations
 - Department Evaluations
- Began a DL Student Satisfaction Survey in Fall 2013
- Number and percentage of courses, sections, and programs offered at a distance are metrics also used.

12

198

DL Student Satisfaction Data

- 1st survey, 726 responses (10% response rate)
 - 80% were very satisfied or generally satisfied with their DL courses.
 - DL courses were chosen for flexibility & convenience of access and scheduling.
 - *“I’m so grateful to be able to take classes online! If it wasn’t an option, I wouldn’t be able to go back to school. It enables me to continue working full-time, save money, so that I can transition to a new career seamlessly.”*



13

199

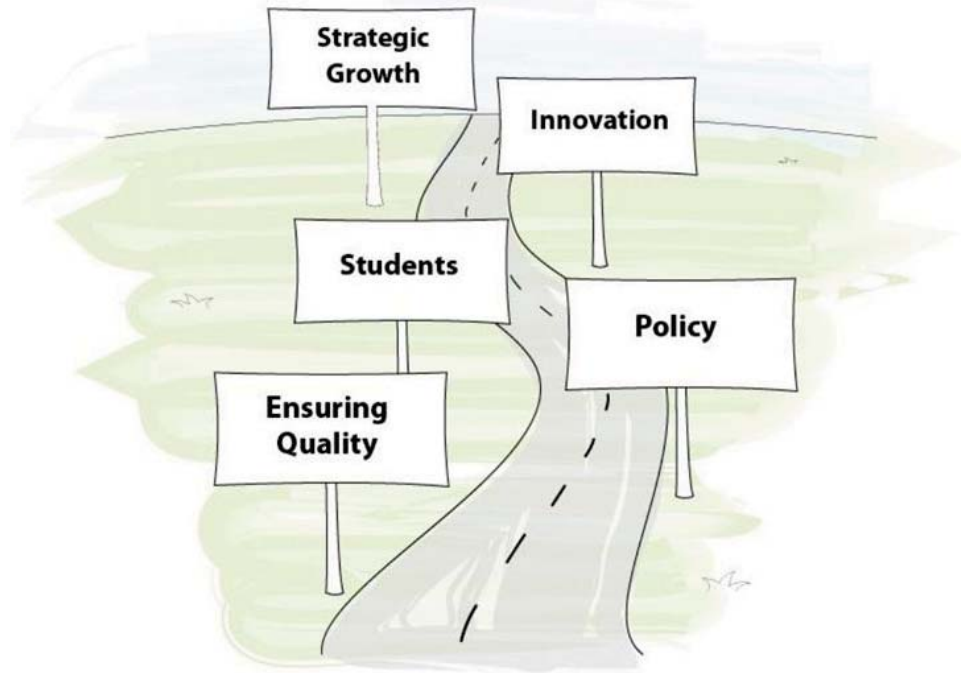
Recent (2011-2014) Achievements

- Trained more than 175 faculty via the ***Teaching OnLine (TOL)*** program.
- Developed a **“Transition to DL”** program – 7+ programs
- Developed **full instructional design model**
- Developed a more robust **DL support model** for faculty and students
- Increased focus on **student services for online students**



14

200



Future Considerations / Goals

ONLINE EDUCATION @ UNF



15

201



STRATEGIC PLAN FOR
DISTANCE LEARNING

2012-2017

University of North Florida

http://www.unf.edu/distancelearning/Distance_Learning_Strategic_Plan_Home.aspx



16

202

DL Strategic Plan – 9 Key Areas (goals/needs)

- **INCREASE** DL courses, programs,
- **ENSURE** quality of courses, delivery, programs
- **REVISE** DL Policy
- **EDUCATE** campus community
- **TRAINING** of all faculty who teach DL
- **BROADEN ACCESS** to DL at UNF
- **INTEGRATE** quality review procedures
- **OFFER** full range of student support services
- **PROVIDE** robust technical support and systems





STATE UNIVERSITY SYSTEM of FLORIDA
Board of Governors

Innovation and Online Committee

FLORIDA
POLYTECHNIC
UNIVERSITY

FloridaPolytechnic.org

Online Learning

FGCU 5/8/2014

Technology. Engineering. Applied Research.

204

Outline

- **About Florida Polytechnic University**
- **Florida Poly's Online Plans / Strategies**
 - **Development & Implementation Plans**
- **Questions & Answers**

FloridaPolytechnic.org

FLORIDA
POLYTECHNIC
UNIVERSITY

205

Classes start August 2014 (500+ Students)

2 Colleges. 6 Bachelor degrees. 2 Master degrees. 19 Cutting-edge concentrations.

COLLEGE OF ENGINEERING	COLLEGE OF INNOVATION & TECHNOLOGY
Bachelor of Science Degrees	Bachelor of Science Degrees
COMPUTER ENGINEERING <i>with one of the following concentrations</i> Digital Logic Design Embedded System Design Machine Intelligence	ADVANCED TECHNOLOGY <i>with one of the following concentrations</i> Big Data Analytics Cloud Virtualization Health Informatics
ELECTRICAL ENGINEERING <i>with one of the following concentrations</i> Control Systems Digital & Hybrid Systems Electrodynamics Magnetics Semiconductors	COMPUTER SCIENCE & INFORMATION TECHNOLOGY <i>with one of the following concentrations</i> Cyber Gaming Information Assurance & Cyber Security
MECHANICAL & INDUSTRIAL ENGINEERING <i>with one of the following concentrations</i> Geometric Dimensioning & Tolerancing Motion Intelligence Multifunctional Materials Nanotechnology	SCIENCE & TECHNOLOGY MANAGEMENT <i>with one of the following concentrations</i> Logistics Materials & Supply Chain
Master of Science Degree	Master of Science Degree
ENGINEERING	INNOVATION & TECHNOLOGY

FloridaPolytechnic.org

FLORIDA
POLYTECHNIC
UNIVERSITY

206

Key Timeline



FloridaPolytechnic.org

FLORIDA
POLYTECHNIC
UNIVERSITY

207

Florida Poly's Online Education

“Online education will be one of our pillars in delivering undergraduate & graduate curriculum”.

Plans for Courses Offering:

- **Classroom:**
 - ✓ Face-to-face, use of advanced learning spaces on campus, instructor-led.
- **Hybrid:**
 - ✓ Blended, mixed-mode combination online/in person
- **Online:**
 - ✓ Online access, asynchronous instructor-guided, flexible schedule, technology driven.
- **Massive Open Online Courses (MOOCs):**
 - ✓ May be used initially to supplement educational content and/or to prepare students for degree programs or specific courses.

Florida Poly's Online Strategy

- Apply lessons learned from peers.
 - Students will be encouraged to take advantage of the wide array of courses made available including Florida Virtual Campus.
 - ✓ Ensure that the courses taken are integrate in students' overall degree plans.

Florida Poly's Online Strategy

- **Phase I:**
 - ✓ Use Florida Virtual Campus
- **Phase II:**
 - ✓ Hybrid
 - Selected Courses
- **Phase III:**
 - ✓ Transitioning potential courses and/or programs to fully online options.

Q & A



FloridaPolytechnic.org

FLORIDA
POLYTECHNIC
UNIVERSITY