



Distance.fsu.edu

Dr. Susann Rudasill, Director
Office of Distance Learning





OFFICE OF DISTANCE LEARNING
FLORIDA STATE UNIVERSITY

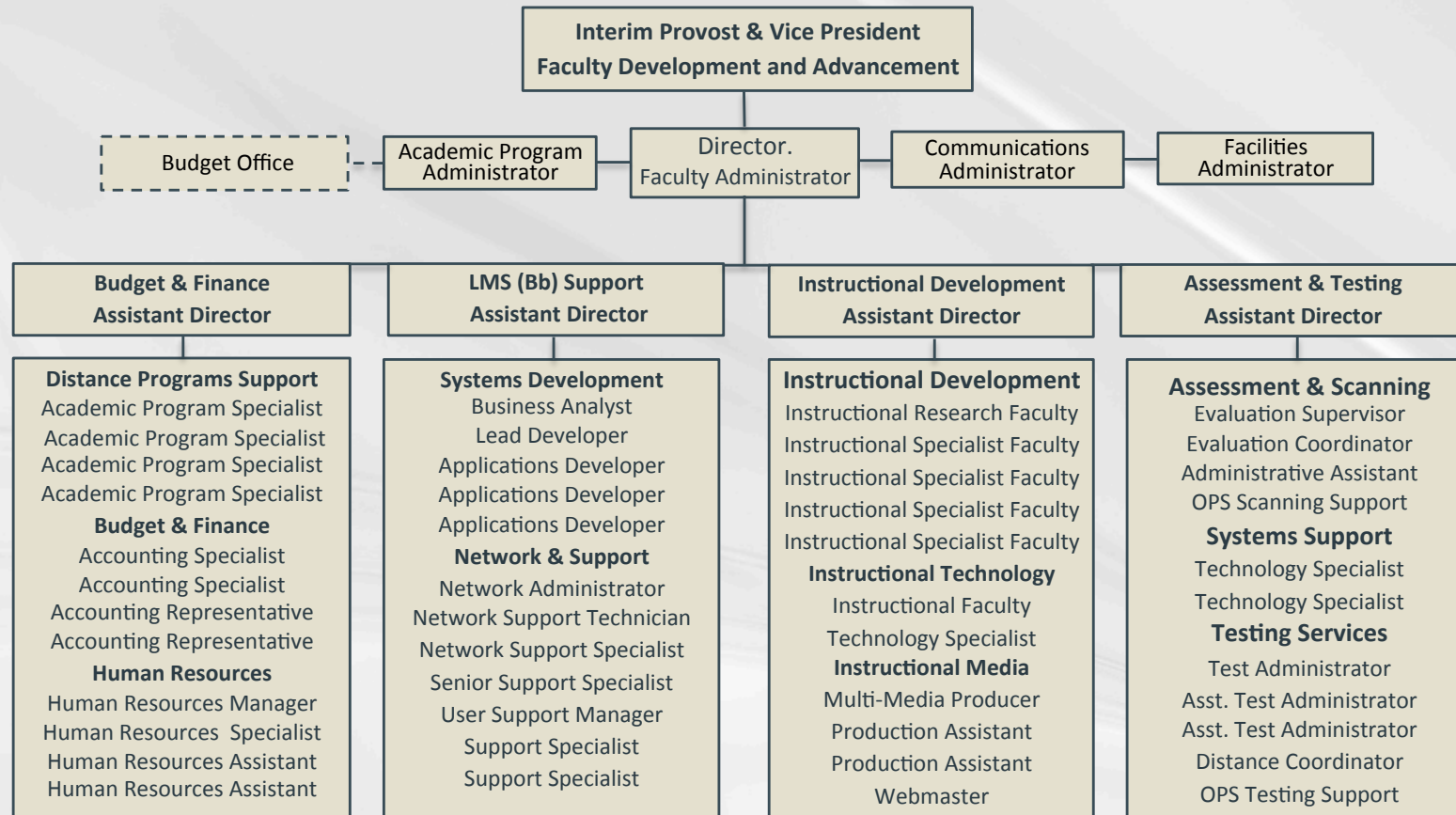
FLORIDA STATE UNIVERSITY ONLINE

QUALITY, CONTENT & COMMUNITY

[Live Link](#)

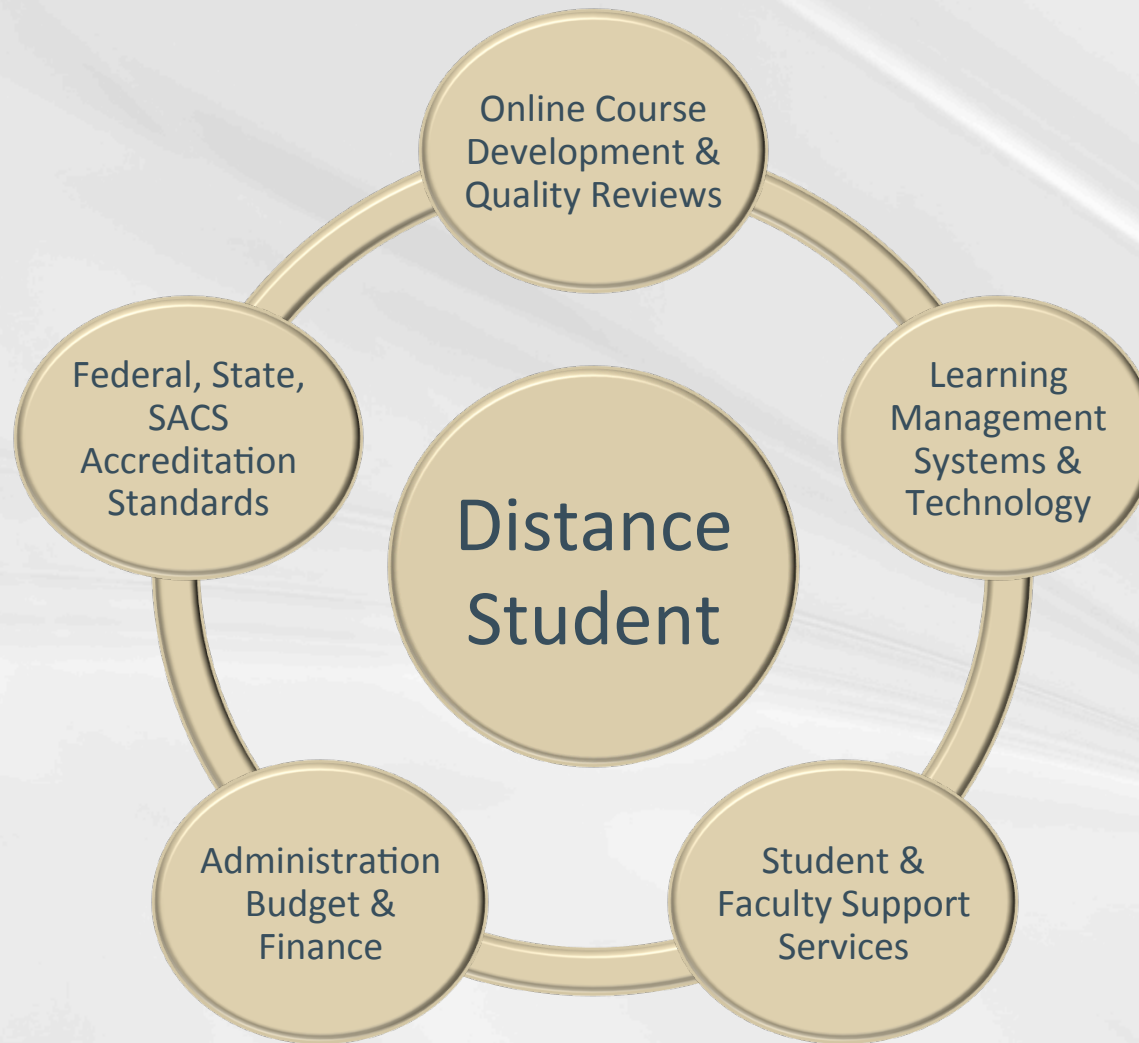


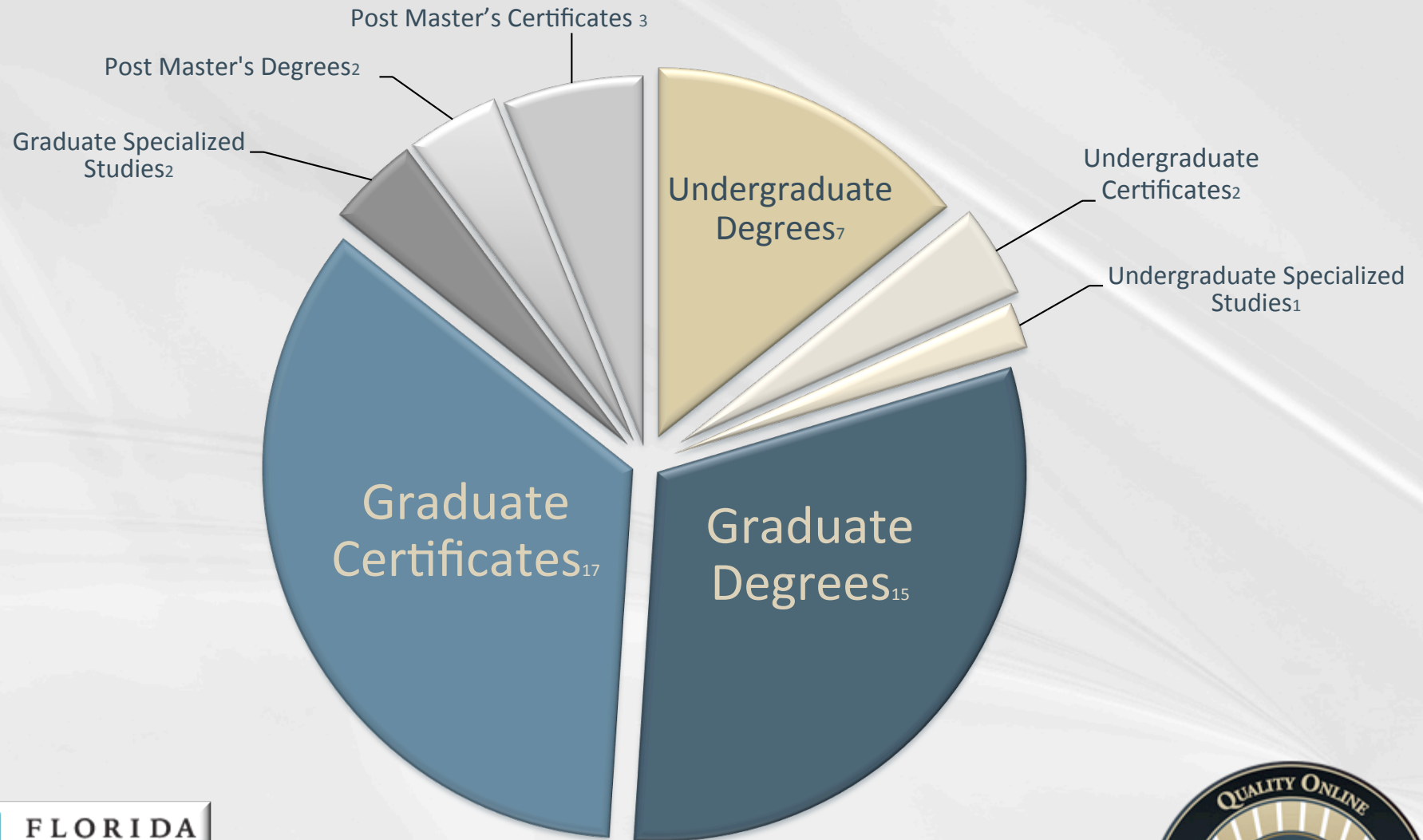
Organizational Structure





Student-Centric Distance Learning







Fully Online Distance Programs

Undergraduate Degrees:

Computer Science, BA, BS
Criminology, BS
Interdisciplinary Social Science, BS
Public Safety & Security, BS major in Law Enforcement Intelligence
Public Safety & Security, BS major in Law Enforcement Operations
Public Safety & Security, BS major in Police Science

Undergraduate Certificates:

Emergency Management
Multicultural Marketing

Undergraduate Specialized Studies:

Criminology

Graduate Degrees:

Business Administration, MBA
Communication & Science Disorders, MS
Criminology, MS
Educational Leadership, MS
Information Technology, MS
MS major in Instructional Design
MS major in Open & Distance Learning
MS major in Performance Improvement & HR Development
Library and Information Studies, MS
Management, MS
Management Information Systems, MS
Nurse Educator, MS
Nurse Leader, MS
Social Work, MSW
Special Education, MS

Graduate Certificates:

Coaching
Communication Science and Disorders Bridge
Emergency Management
Event Management
Geographic Information Systems
Human Performance Technology
Information Architecture
Institutional Research
Leadership and Management
Leadership in Executive and Administrative Development
Multicultural Marketing
Online Instructional Development
Project Management
Reference Services
Sales Management
School Library and Media Leadership
Youth Services

Graduate Specialized Studies:

Blended and Online Learning and Technology (BOLT)
Business Professional Specialization

Post Master's Degrees:

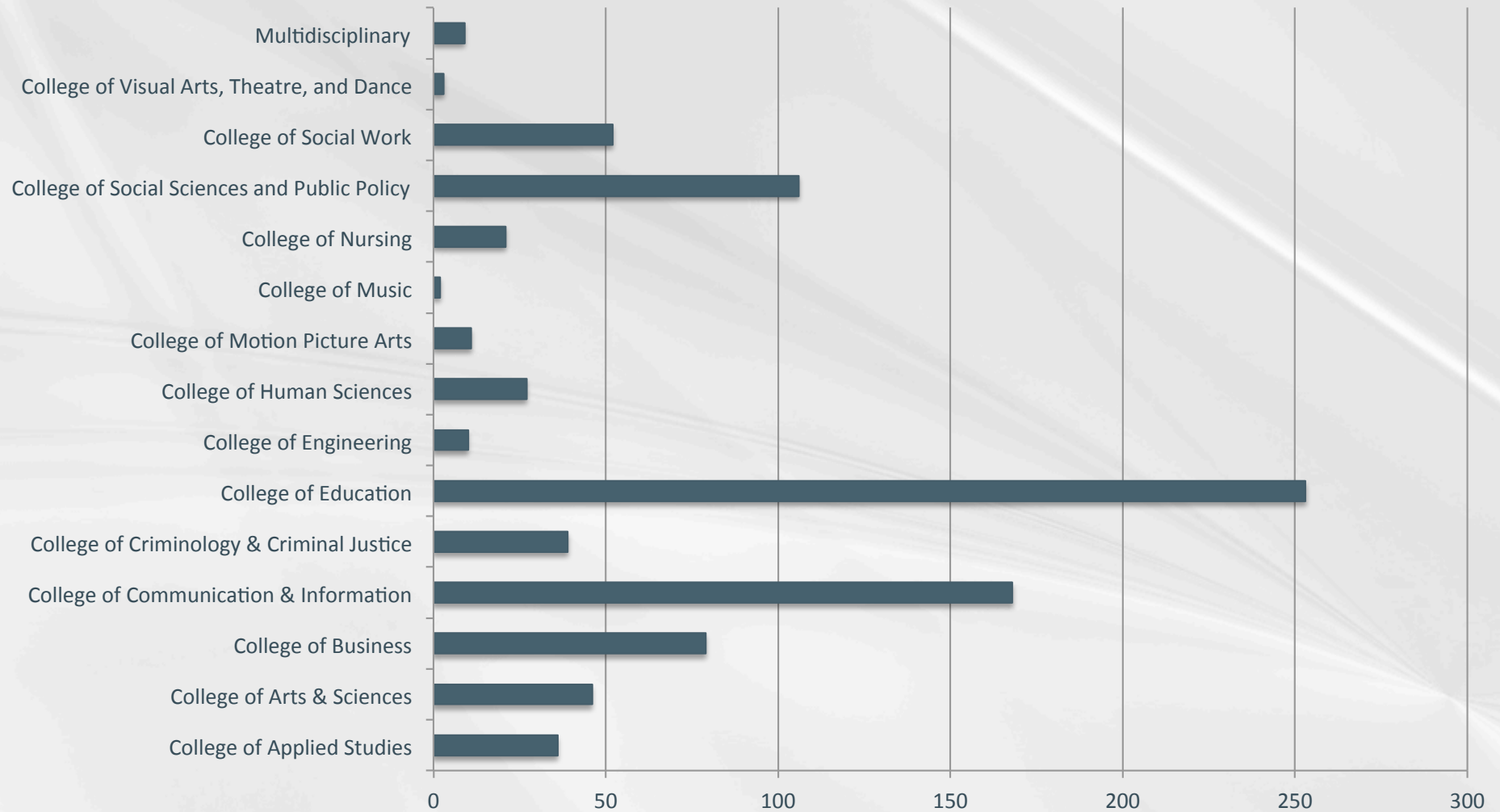
Educational Leadership, Specialist
Library and Information Studies, Specialist

Post Master's Certificates:

Modified Program in Educational Leadership/Administration
Nurse Educator
Nursing Leadership



862+ Courses across 15 Colleges





70+ Courses Currently in Development

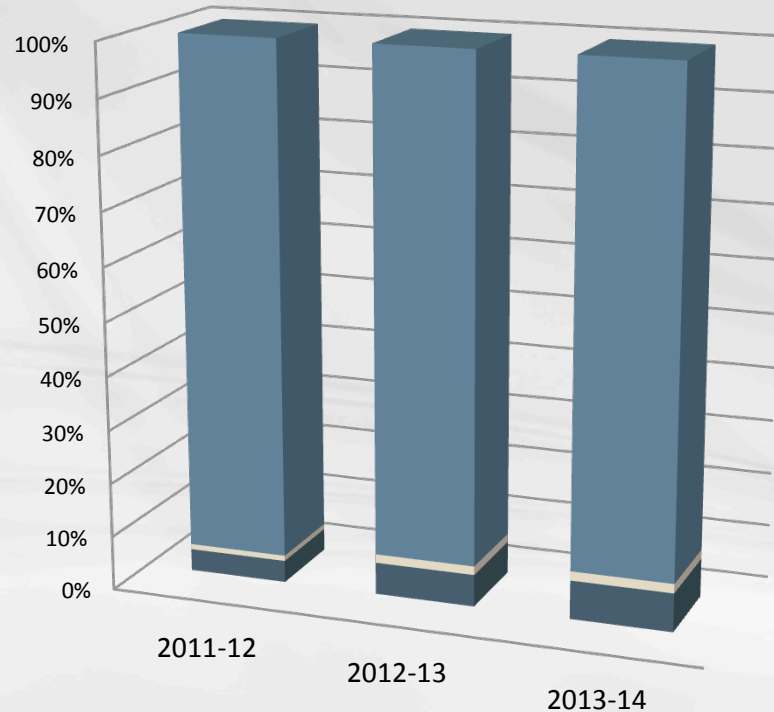
Foundation Engineering
Traffic Engineering
Civil Engineering
Entrepreneurial Practices
Environmental Engineering
Chemistry
Digital History
International Dev. & Social Change
Commercial Rec. & Tourism
Sociology of Religion
Politics & Society
Leadership & Supervision
Managing Special Events
Sport History
Contemporary Art
Entering the Public Sphere
Courts and Social Policy
Introduction to World Religions
Social Problems
Sports and Society
Diffusion of Sustainable Design

Practicum in Family & Child
Sciences Concepts of Management
Organizational Behavior
Theories & Methods of Offender
Treatment
Sport and Film
World Cities
Pavement Engineering,
Community Correction
Religion and Crime
Religion of South Asia
Bioethics
Analysis of Economic Data
Economics of Art and Culture
Learning Through Game Design
Basic Market Concepts
Multinational Business Operations
Coral Reef Ecology
Bridge Engineering
Timber Design
Nature of Florida

History of Florida
Adulthood & Aging
Nutrition and Sports
The Science of Nutrition
Intro To Educational Technology
Nineteenth Century Europe
Recreation, Activities Leadership
Recreation Program Design
Criminal Justice Administration
The Individual and Society & Drugs
Drug Users and Justice System
Comparative Criminology
Intro to Political Philosophy
Intro to Philosophy
Philosophy of Race, Class, &
Gender Contexts for Middle
Childhood & Adolescents
Web Presentations
Art Appreciation
Family Problems & Cities in Society

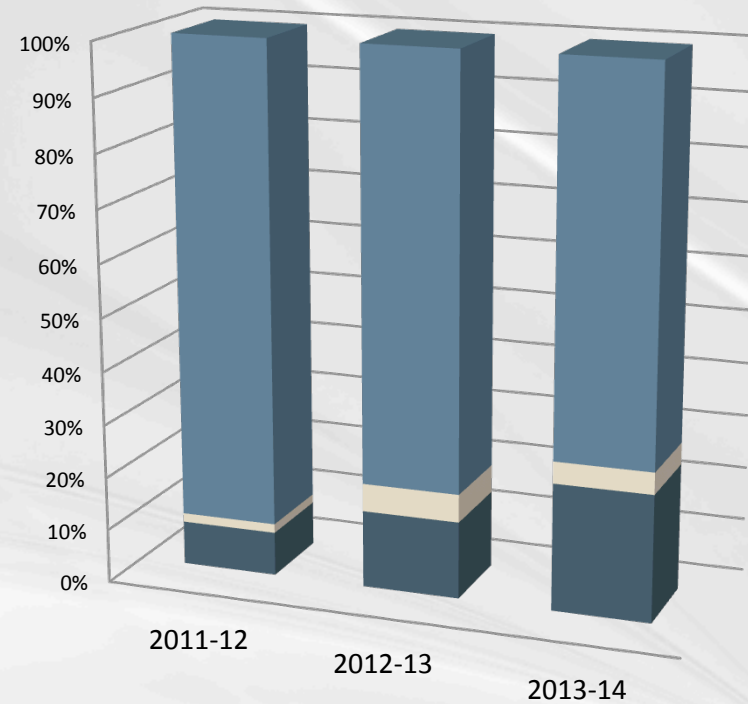


Distance Student Credit Hours Growth



Fundable

	2011-12	2012-13	2013-14
Traditional	1,033,350	991,766	970,923
Hybrid	10,894	17,205	18,376
Distance Learning	44,210	63,689	76,386
	4%	6%	7%

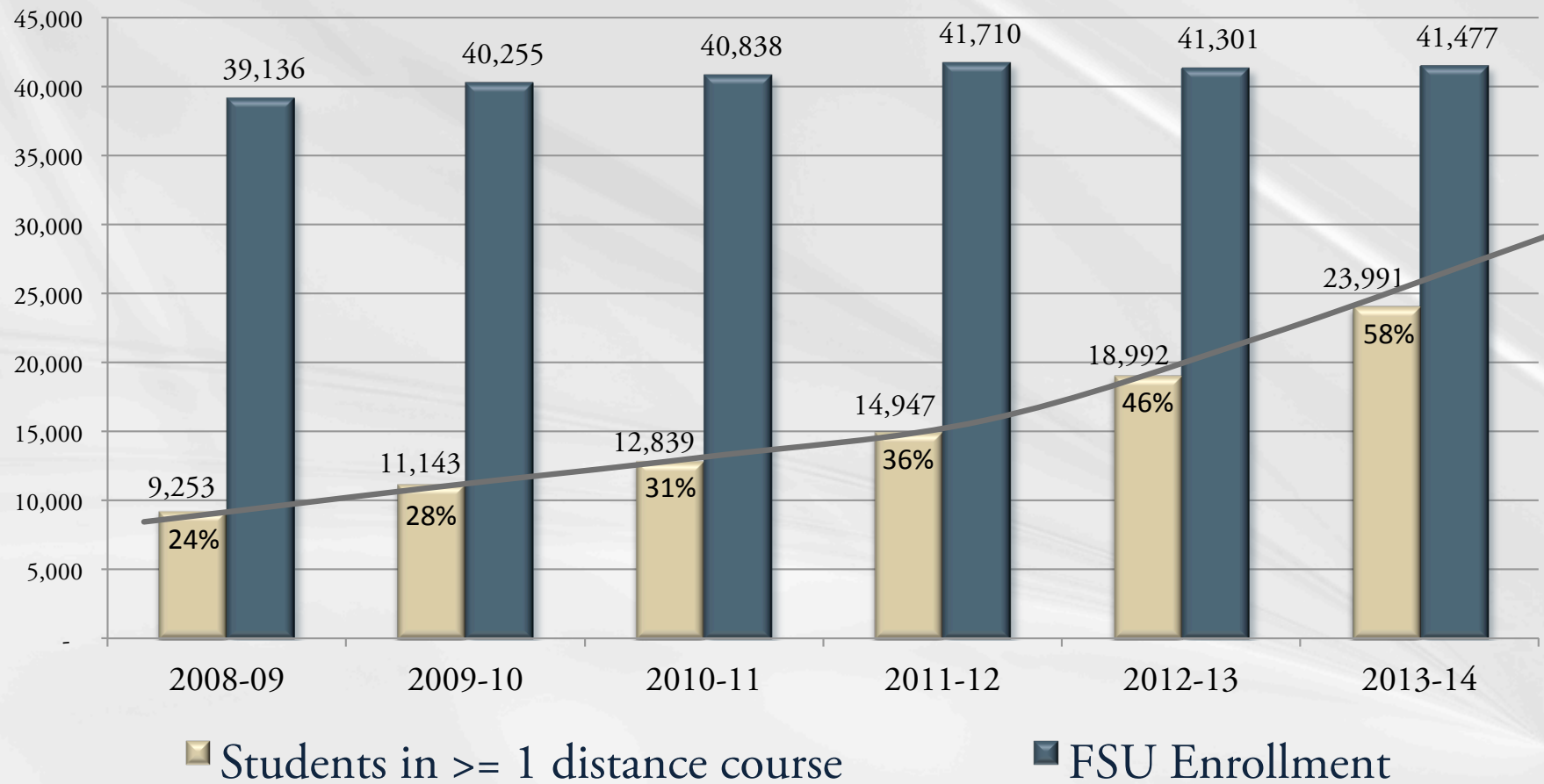


Non-Fundable

	2011-12	2012-13	2013-14
Traditional	67,094	63,671	61,799
Hybrid	1,233	4,144	3,504
Distance Learning	6,104	11,495	20,461
	8%	14%	24%

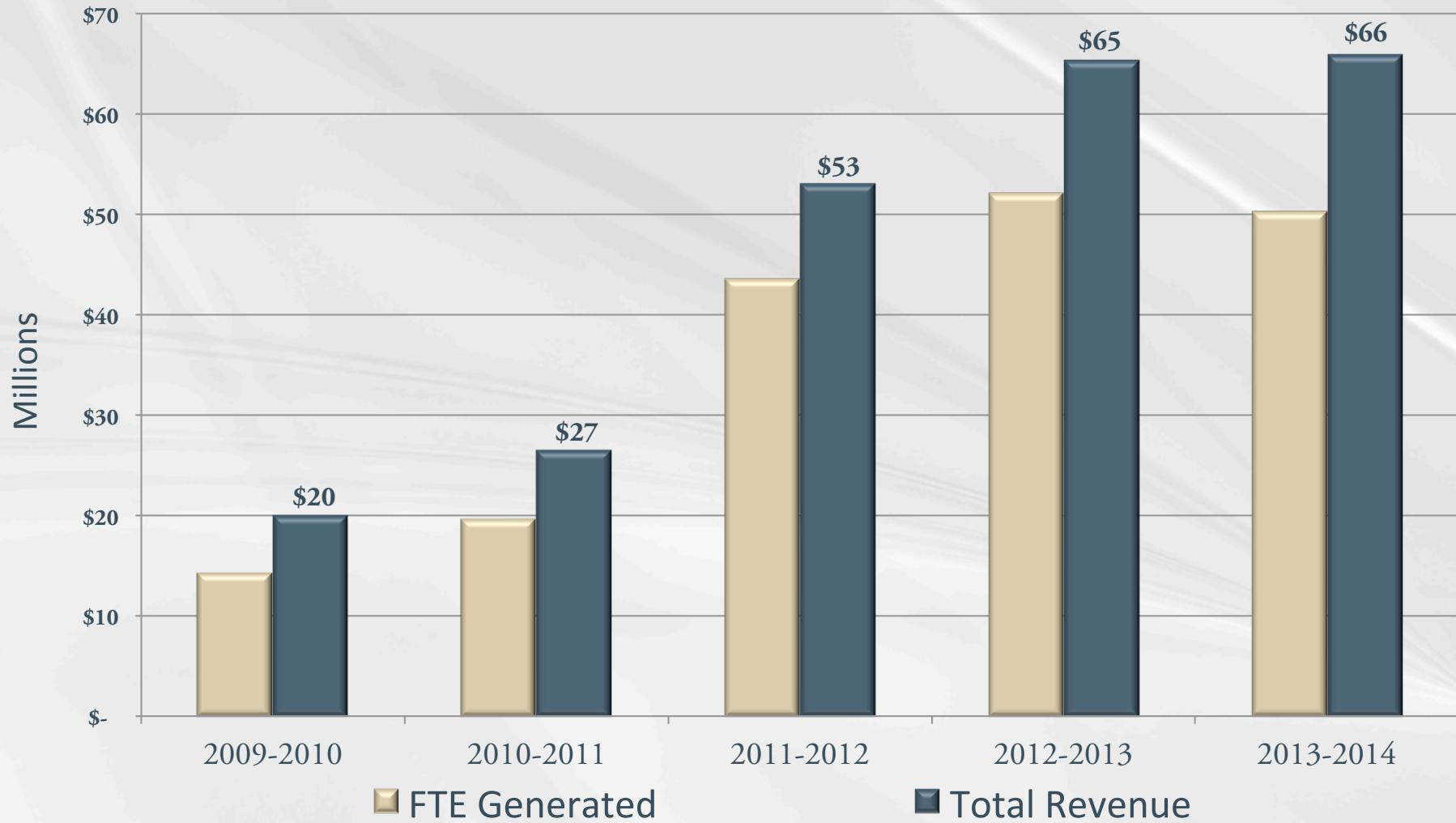


FSU Distance Enrollment Growth





Distance Revenue Growth





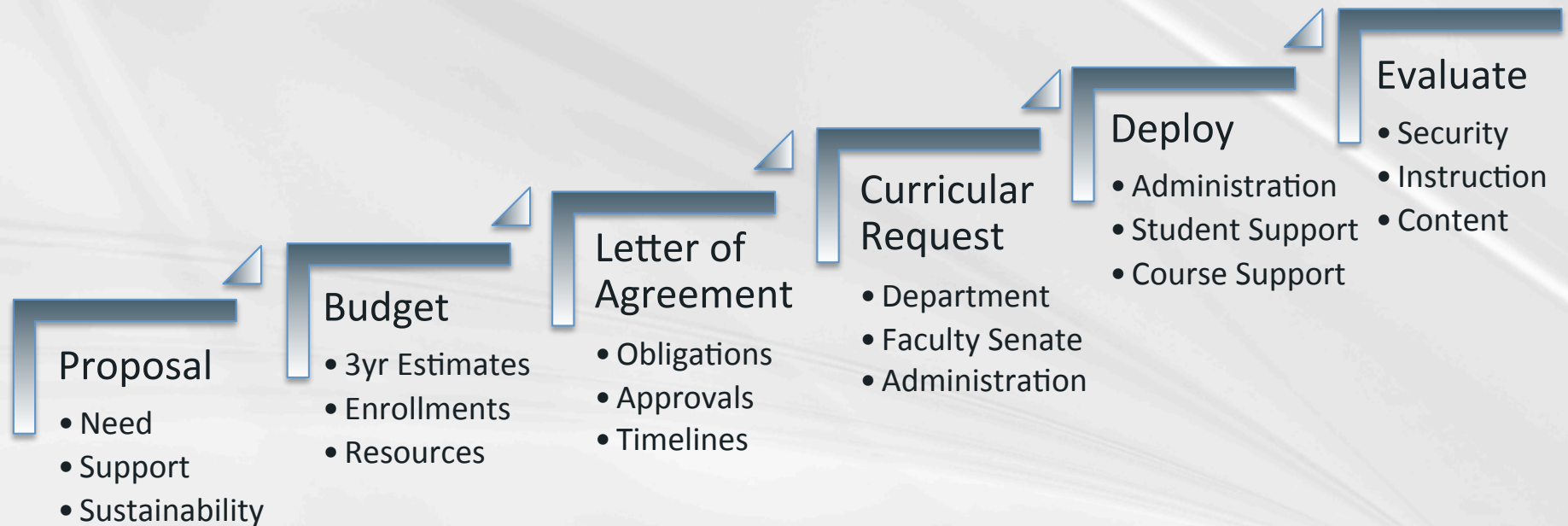
Determinates of Funding Type

- ✓ Statutory Requirements
- ✓ Distance Learning Policy
- ✓ Budget Office Guidelines
- ✓ Auxiliary Committee Review
- ✓ External & Internal Audits
- ✓ Annual Review of DL Fees





Development Process





Policies Regarding Tuition and Fees

- ✓ Fundable tuition is credited to the department
- ✓ Distance fees are deposited into auxiliary accounts centrally managed by Academic Affairs and ODL
- ✓ Expenditures from DL auxiliary accounts must be related to the program or course for which the fees were collected
- ✓ DL fees must not exceed the cost to develop and maintain the DL program or course





FSU Tuition and Fees (per credit hour)

Undergraduate	On-Campus	Online	Graduate	On-Campus	Online
<u>State Fees</u>			<u>State Fees</u>		
Tuition	\$105.07	\$105.07	Tuition	\$403.51	\$403.51
Financial Aid	\$5.25	\$5.25	Financial Aid	\$20.17	\$20.17
Capital Improvement Trust Fund	\$4.76	\$4.76	Capital Improvement Trust Fund	\$4.76	\$4.76
Total State Fees	\$115.08	\$115.08	Total State Fees	\$428.44	\$428.44
<u>Local Fees</u>			<u>Local Fees</u>		
Athletics	\$7.90	\$0.69	Athletics	\$7.90	\$0.69
Activities & Services	\$12.86	\$9.88	Activities & Services	\$12.86	\$9.88
Student Health	\$13.97	\$-	Student Health	\$13.97	\$-
Total Local Fees	\$34.73	\$10.57	Total Local Fees	\$34.73	\$10.57
<u>Other Mandatory Fees</u>			<u>Other Mandatory Fees</u>		
Tuition Differential	\$49.59	\$49.59	Tuition Differential	\$0.00	\$0.00
Transportation Access	\$8.90	\$-	Transportation Access	\$8.90	\$-
Student Facilities Use Fee	\$2.00	\$-	Student Facilities Use Fee	\$2.00	\$-
Technology	\$5.25	\$5.25	Technology	\$5.25	\$5.25
Total Mandatory Fees	\$65.74	\$54.84	Total Mandatory Fees	\$16.15	\$5.25
Total Resident Fees	\$215.55	\$180.49	Total Resident Fees	\$479.32	\$444.26
Distance Learning Fee*		variable	Distance Learning Fee*		variable
Per Semester - Student Facilities Use Fee		\$20.00	Per Semester - Student Facilities Use Fee		\$20.00
Nonresident			Nonresident		
Total Resident Fees	\$215.55	\$180.49	Total Resident Fees	\$479.32	\$444.26
Nonresident Fee	\$481.48	\$481.48	Nonresident Fee	\$601.34	\$601.34
Nonresident Student Financial Aid Fee	\$24.07	\$24.07	Nonresident Student Financial Aid Fee	\$30.06	\$30.06
Distance Learning Fee*		variable	Distance Learning Fee*		variable
Per Semester - Student Facilities Use Fee		\$20.00	Per Semester - Student Facilities Use Fee		\$20.00

**Distance learning fees vary by program/course*



Examples of Distance Fees by Program

Undergraduate Programs/Courses Fundable Distance Learning Fees Per Credit Hour

Undergraduate Degree Programs	2011-12	2012-13	2013-14
Computer Science PCC	\$100.00	\$90.00	\$90.00
Interdisciplinary Social Science	\$70.00	\$70.00	\$90/\$70
Nursing Baccalaureate Clinical	\$100.00	\$100.00	\$100.00
Public Safety & Security PCC	\$45.00	\$45.00	\$45.00
School of Teacher Education	\$70.00	\$40.00	\$40.00
Graduate Degree Programs			
Civil/Environmental Engineering		\$83.00	\$83.00
Communication Science & Disorders	\$75.00	\$73.00	\$73.00
Educational Leadership	\$80.00	\$80.00	\$70.00
Higher Education General Administration	\$70.00	\$70.00	\$70.00
Industrial Engineering		\$108.00	\$108.00
Instructional Systems	\$70.00	\$72.00	\$70.00
Library & Information Studies	\$88.00	\$88.00	\$88.00
Master's in Criminal Justice	\$100.00	\$110.00	\$120.00



Market Tuition Rate Graduate Programs

Graduate Degree Programs	2011-12	2012-13	2013-14
CCI Project Management		\$795.00	\$795.00
Criminal Justice Master's		\$513.34	\$553.70
Instructional Systems		\$544.00	\$544.00
Library & Information Studies	\$515.00	\$530.00	\$513.00
Business Administration (MBA)	\$700.00	\$750.00	\$750.00
Master's Information Systems (MIS)	\$700.00	\$750.00	\$750.00
Risk Management Insurance (RMI)	\$700.00	\$600.00	\$600.00
Communication Science Disorders (SCSD)		\$463.00	\$463.00
Master's Social Work	\$625.00	\$625.00	\$594.82



Faculty, Mentor, Student Training

FLORIDA STATE UNIVERSITY
OFFICE OF DISTANCE LEARNING

ONLINE MENTOR TRAINING COURSE

Do you want to be a good online mentor?
Are you looking for a training opportunity for your online mentors?

The Office of Distance Learning offers a 4-week self-paced online training course for online mentors at Florida State University. This training provides online mentoring strategies, addresses FSU policies, and provides guidance and best practices for using Blackboard™ tools.

Four weeks of self-paced online training modules

LESSONS

- Introduction to Online Mentoring**
 - The Mentor Role
 - Characteristics of Online Students
 - Successful Online Students
 - FSU Policies
- Obtaining Assistance with Blackboard**
 - What is Blackboard?
 - Blackboard Tools
 - Other Resources
- Managing Online Communication & Discussion**
 - Promoting Communication & Interaction
 - Selecting Proper Communication Modes
 - Using Good Netiquette
 - Utilizing and Managing Email
 - Managing Discussion Boards
 - Facilitating Group Work & Collaboration

A certificate of completion will be issued when mentors successfully complete discussion assignments.

For more information please contact:
Dr. Tami Im
Instructional Development Faculty
Office of Distance Learning
Florida State University
T: 850-644-7536 | E: t.im@campus.fsu.edu

distance.fsu.edu

FLORIDA STATE UNIVERSITY
OFFICE OF DISTANCE LEARNING

ONLINE INSTRUCTOR TRAINING LEVEL 1

The Office of Distance Learning provides support to Florida State University faculty who are teaching online academic courses. This training course provides basic information to help instructors prepare for their first online class.

A certificate of completion will be issued when you successfully pass the quizzes for all units.

UNITS

- Online Instructor Readiness**
 - Online Instructor Role
 - Online Instructor Responsibilities
 - Time Management
 - Blackboard User
- Managing Online Communication**
 - Communication Climate
 - Good Netiquette
 - Internet-Based Correspondence
 - Discussion Boards
 - Group Collaboration
- Grading and Assessment**
 - The Assignment Tool
 - Grade Center
 - Statistics Tracking
 - Red Exams
- 4**
- 5**

distance.fsu.edu

myCampus FLORIDA STATE UNIVERSITY
Blackboard Upgrade Center

¿Por Qué FSU En Linea?





Performance Measures

- ✓ Online Instructor & Mentor Certification
- ✓ Quality Matters™ reviews of instruction
- ✓ Student and faculty surveys
- ✓ Faculty workshops and consultations
- ✓ Student success – completion & placement



Comparison of Online to On-Campus Completion Rates

														% Passed "C" or Better	
Fall 2011	A	A-	B	B+	B-	C	C+	C-	D	D+	D-	F			
Distance Learning	1851	524	316	308	121	51	64	33	28	13	1	121	94.3%	3.9% higher	
FSU Main Campus	44731	17624	23707	14550	10017	10536	6684	4112	2794	1124	808	4764	90.4%		
Spring 2012	A	A-	B	B+	B-	C	C+	C-	D	D+	D-	F			
Distance Learning	1795	532	242	319	90	66	69	31	13	10	4	104	95.1%	4.0% higher	
FSU Main Campus	45476	16858	23211	13406	9276	9752	6091	3689	2457	991	736	4371	91.0%		
Summer 2012	A	A-	B	B+	B-	C	C+	C-	D	D+	D-	F			
Distance Learning	1472	373	229	270	66	60	37	23	6	8	4	41	96.8%	5.1% higher	
FSU Main Campus	13423	4971	6476	3910	2717	2762	1690	1027	732	275	158	1055	91.7%		
Fall 2012	A	A-	B	B+	B-	C	C+	C-	D	D+	D-	F			
Distance Learning	1997	557	275	323	114	75	60	30	18	11	9	96	95.4%	4.5% higher	
FSU Main Campus	45940	17648	24488	14162	9719	10477	6433	3986	2784	1087	755	4274	90.9%		
Spring 2013	A	A-	B	B+	B-	C	C+	C-	D	D+	D-	F			
Distance Learning	1706	536	298	335	103	88	65	30	20	8	6	118	94.5%	3.7% higher	
FSU Main Campus	45022	16323	22134	13061	8702	9495	5927	3593	2500	1010	661	4491	90.8%		
Summer 2013	A	A-	B	B+	B-	C	C+	C-	D	D+	D-	F			
Distance Learning	1293	410	248	219	70	65	53	15	14	9	5	67	95.5%	3.9% higher	
FSU Main Campus	12563	4708	6418	3928	2586	2696	1708	1089	665	262	164	996	91.6%		

Data Source: FSU Institutional Research



Goals & Resources for Growth

- ✓ Support growth with DL fees and E&G allocations
- ✓ Support new technology with Tech fees
- ✓ Continue QM certification of faculty reviewers
- ✓ Grant Tuition waivers to attract & support GS mentors
- ✓ Expand student services to improve student success
- ✓ Secure private funding for innovative instruction
- ✓ Collaborate & partner with other institutions