



UNIVERSITY *of* WEST FLORIDA
INNOVATION INSTITUTE

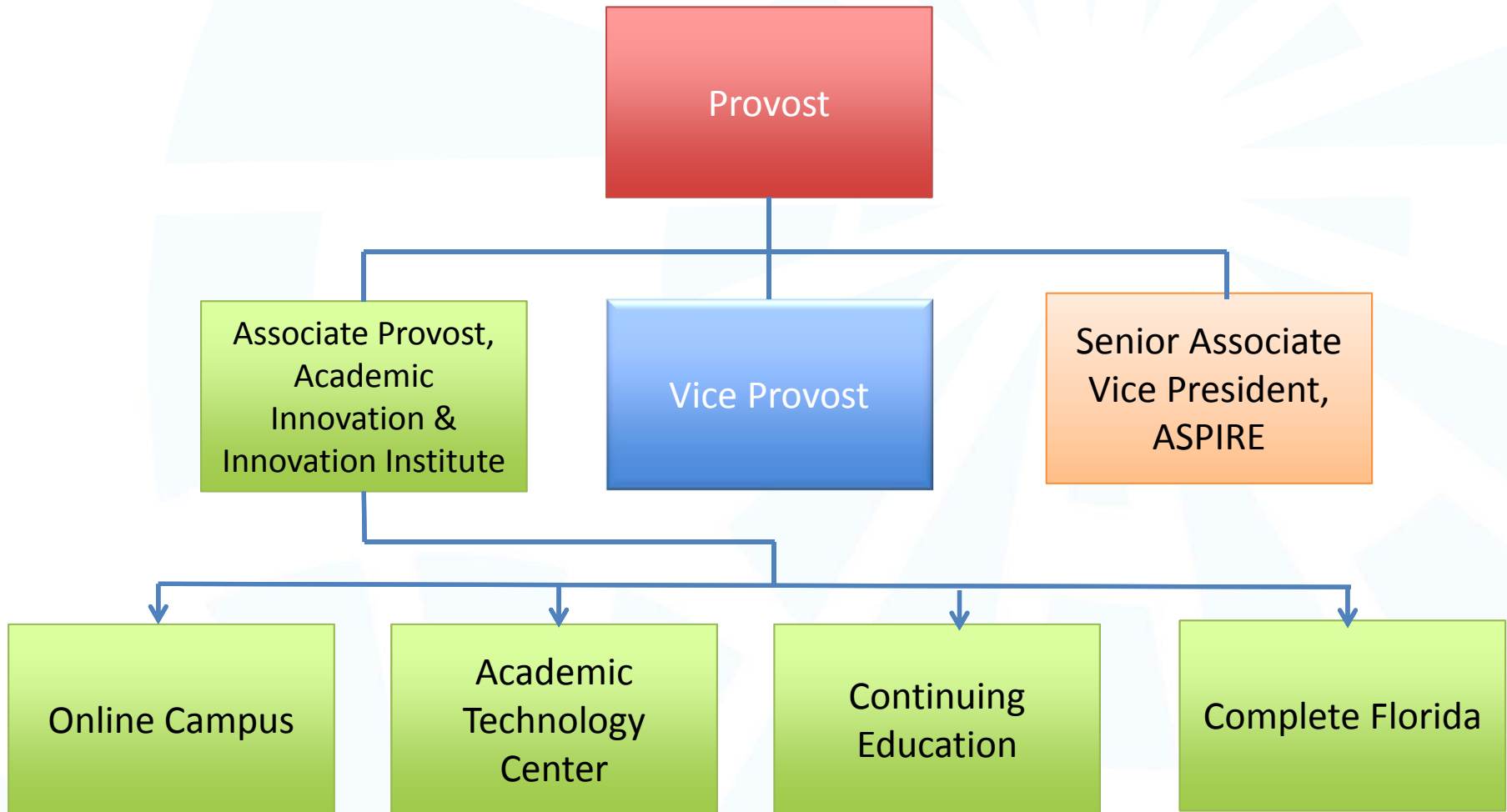
Distance Learning Update

Dr. Pam Northrup, Associate
Provost/Academic Innovation

UWF's Model for Distance Learning

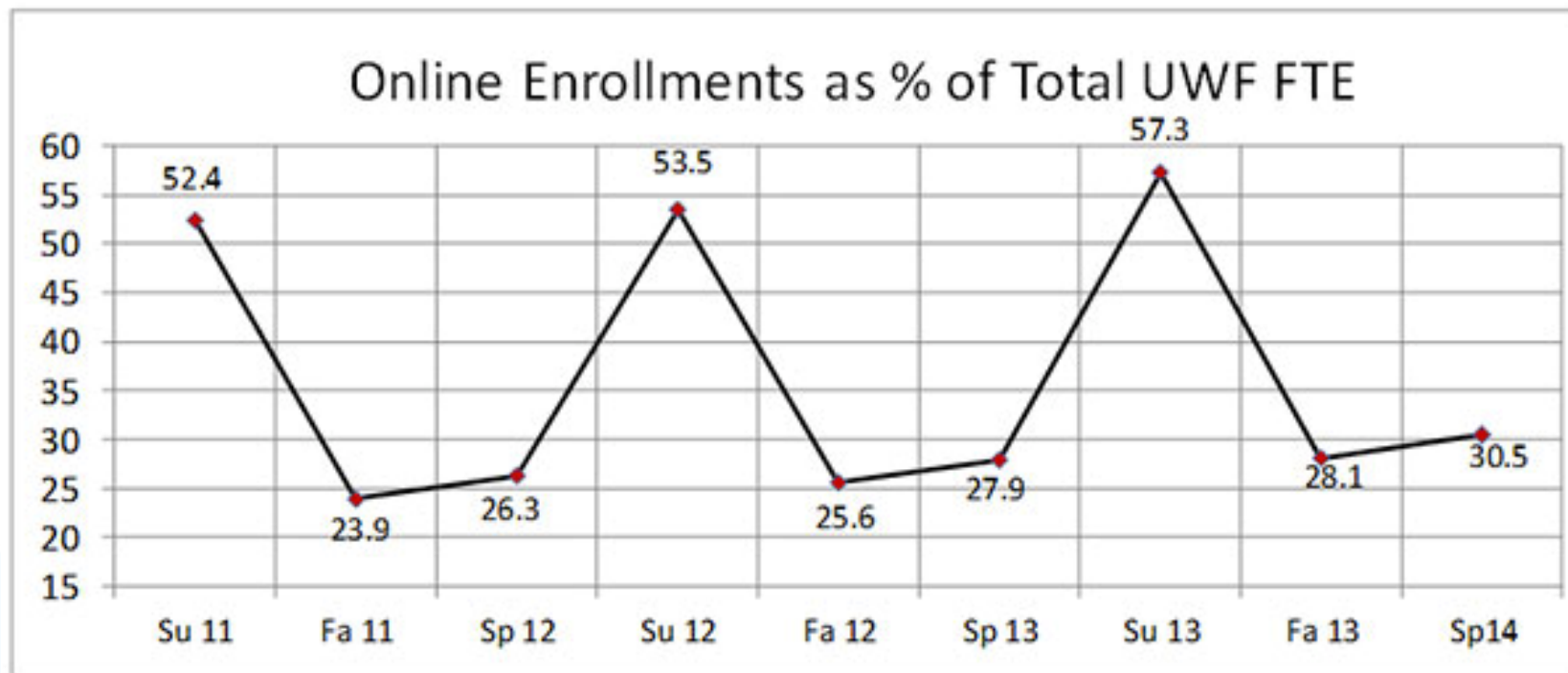


Administration



Fully Online Programs

Online Course Statistics (OLC coded courses)



Source: ENS000012
end of drop/add

16% of all UWF Bachelors Programs are Fully Online



- Engineering Technology, B.S. - Information Engineering Technology
- Exceptional Student Education, B.A.
- Health Sciences, B.S.
- Information Technology, Interdisciplinary, B.S. - Networking & Telecommunications
- Maritime Studies, B.A.
- Nursing: RN-BSN
- Workforce and Program Development, B.S.

44% of all Masters Programs are Fully Online

- Administration, M.S.A.
- Computer Science, M.S.
- Curriculum & Instruction, M.Ed.
- Educational Leadership, M.Ed.
- Exceptional Student Education Comprehensive, M.A.
- Instructional Technology, M.Ed.
- Mathematics, M.S.
- Nursing, M.S.N.
- Political Science, M.A.
- Public Health, M.P.H.
- Reading, M.Ed.

Doctoral Program

- Ed.D. in Curriculum and Instruction

Online Certificate Programs

Rapidly meeting industry demands

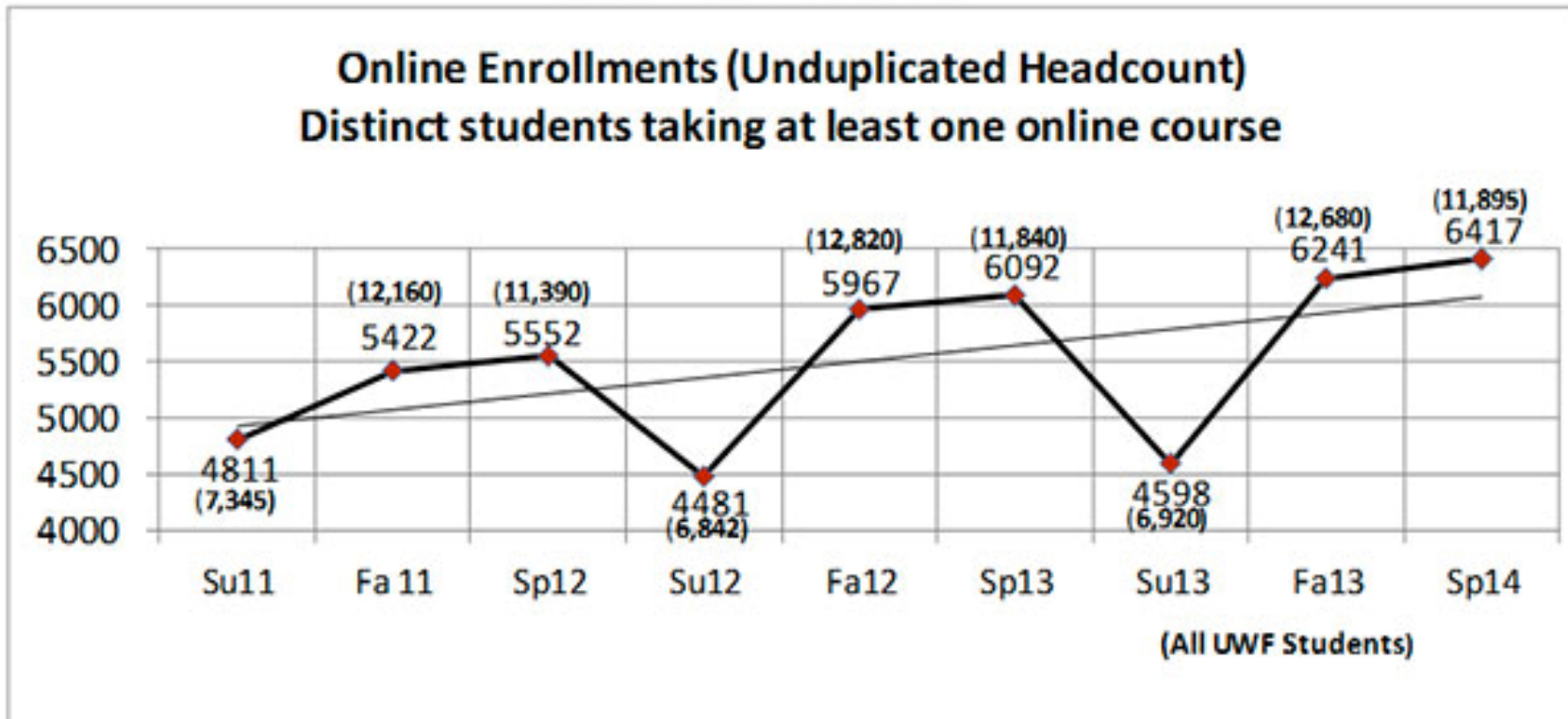


Partners with industry to build and implement Intelligence Analysis

- Intelligence Analysis
- Professional Accountancy
- Arabic Language and Culture
- Civics Educator
- Database Systems
- Geographic Information Systems (GIS)
- Human Performance Technology
- Medical Informatics
- Not-For-Profit Administration
- Public Health
- Teacher Ready
- Technology Systems Support
- Workforce and Program Development

Online Course Statistics

(OLC coded courses)



Source: RP06OR01
end of drop/add

Number of Graduates by Level

Level	Fall 09	Fall 10	Fall 11	Fall 12	Fall 13
Upper	22	28	56	115	126
Masters	168	194	262	249	263

Program Costs

	Hours	Tuition and Fees	Total Tuition and Fees	Books and Materials	Grand Total
Undergraduate Programs					
Exceptional Student Education	132	\$218.87	\$28,890.84	\$4,000	\$32,890.84
Engineering Technology	120	\$218.87	\$26,264.40	\$4,000	\$30,264.40
Health Sciences	120	\$218.87	\$26,264.40	\$4,000	\$30,264.40
IT, Interdisciplinary	120	\$218.87	\$26,264.40	\$4,000	\$30,264.40
Maritime Studies	120	\$218.87	\$26,264.40	\$4,000	\$30,264.40
Nursing	124	\$265.63	\$32,938.12	\$4,000	\$36,938.12
Workforce and Program Development	120	\$218.87	\$26,264.40	\$4,000	\$30,264.40
Graduate Programs					
MSA	36	\$379.91	\$13,676.76	\$2,000	\$15,676.76
Computer Science	32	\$379.91	\$12,157.12	\$2,000	\$14,157.12
Curriculum and Instruction	36	\$379.91	\$13,676.76	\$2,000	\$15,676.76
Ed Leadership	36	\$379.91	\$13,676.76	\$2,000	\$15,676.76
Exceptional Student Education	36	\$379.91	\$13,676.76	\$2,000	\$15,676.76
Instructional Technology	36	\$379.91	\$13,676.76	\$2,000	\$15,676.76
Mathematics	41	\$379.91	\$15,576.31	\$2,000	\$17,576.31
Nursing	39	\$379.91	\$14,816.49	\$2,000	\$16,816.49
Political Science	42	\$379.91	\$15,956.22	\$2,000	\$17,956.22
Public Health	36	\$379.91	\$13,676.76	\$2,000	\$15,676.76

Program Selection

- **Selecting fully online programs**
 - Determination of demand
 - Determination if resources are available to support conversion of traditional to online programs
 - Agreement that faculty will participate in training and support activity
- **State funding vs. self sustaining**
 - Unique market demand exists, primarily non-traditional and out of state
 - Program scalability
 - Determination if market will bear program costs
 - Determination of how earned revenue can be used to support broader academic needs (programs and support)

Tuition and Fees

- Through Complete Florida UWF is studying the options for reduced costs for distance learning
- Distance Learning Fee: \$15.00 per semester hour

- Training courses include:
 - Designing a Quality Online Course
 - Teaching a Quality Online Course
 - Quality Online Instructor Certificate
 - Fast Track Courses
 - Mini-conferences
 - Webinars



Quality Matters used as measure of quality for online course implementation

Foundational Quality Indicators: Performance Measures

Quality Goal	Metric
Institutional Alignment	Cost Growth/Enrollments/Demographics Partnerships Alignment to Work Plan
Quality Curriculum	Comparable educational experience Academic Integrity Course Completion Rates
Faculty Support	Training Support Quality Matters
Student Experience	Identical resources to support online students (labs, support, services, etc.) Quality of instruction indicators
Continuous Improvement	Continuous review of metrics, monitoring national trends

At the University of West Florida, we...

Provide transformational experiences for distance learning students at all levels while crystalizing a climate for high quality teaching and learning



Distance Learning



Goals for Distance Learning

Goals	Indicators
Increase distance learning enrollments to 50% in fully online programs	Complete Florida, adult learner Graduate enrollments Certificates
Test transformative models that support reduced costs	Competency-based programs Prior Learning Assessment Academic Coaching Models Accelerated Starts
Provide an excellent student experience	Streamlined admissions Concierge-based coaching Online Doctoral Support Center
Connect online student graduates to the workforce	Connect graduates to careers Partner with employers
Maintain excellence in all online programs and courses	Continue quality framework Recognize excellent programs Incentives to 'faculty innovators'

For more information, contact

Dr. Pam Northrup
University of West Florida
pnorthru@uwf.edu