

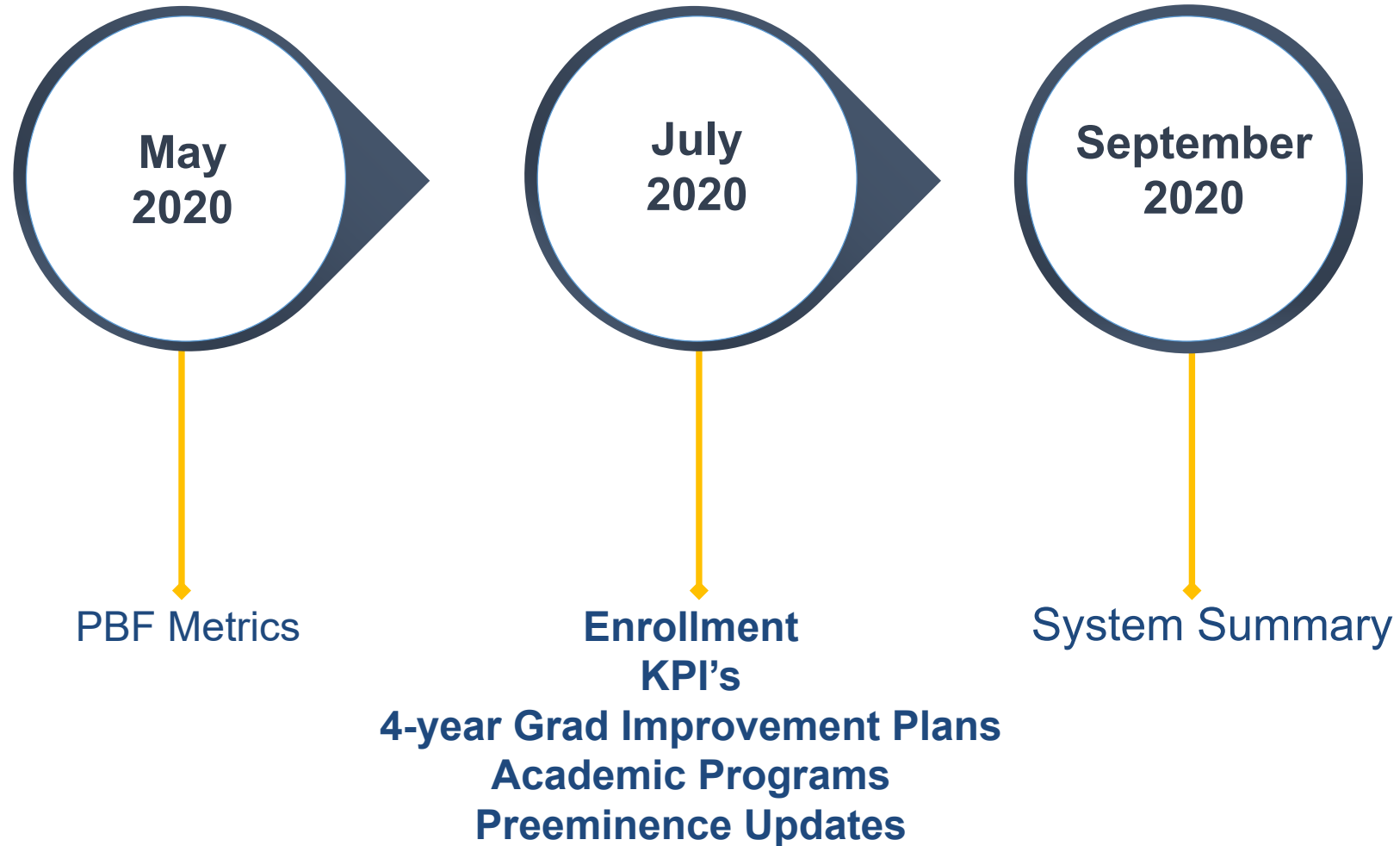


2020 Accountability Plans Institutional Performance

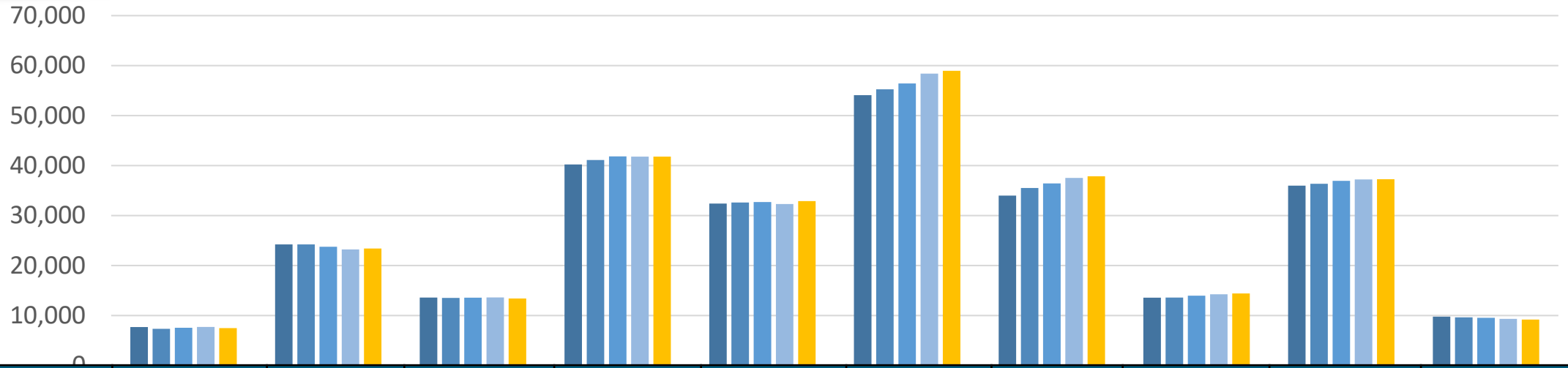
**Dr. Christy England
Vice Chancellor for Academic and Student Affairs
July 21, 2020**

www.flbog.edu

2020 Accountability Plans

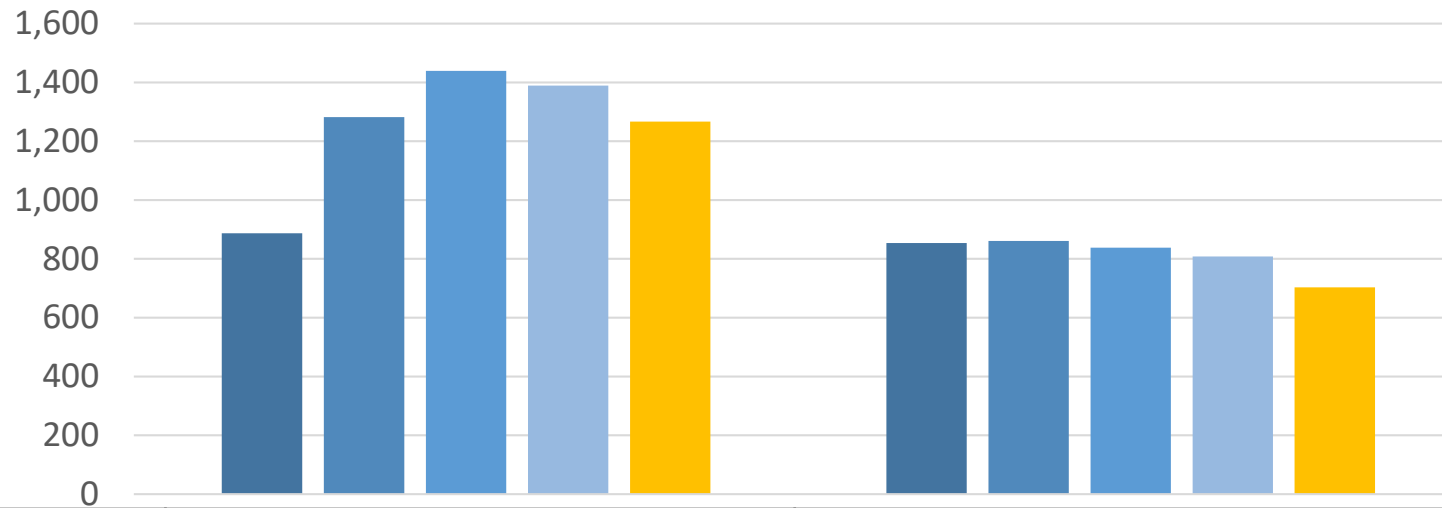


Undergraduate Enrollment: Trends



| YEAR | FAMU | FAU | FGCU | FIU | FSU | UCF | UF | UNF | USF | UWF |
|-------------|-------|--------|--------|--------|--------|--------|--------|--------|--------|-------|
| FALL 2015 | 7,705 | 24,229 | 13,604 | 40,231 | 32,408 | 54,075 | 34,002 | 13,590 | 35,990 | 9,787 |
| FALL 2016 | 7,364 | 24,225 | 13,544 | 41,111 | 32,628 | 55,253 | 35,518 | 13,597 | 36,373 | 9,644 |
| FALL 2017 | 7,554 | 23,766 | 13,582 | 41,852 | 32,718 | 56,424 | 36,436 | 13,987 | 36,955 | 9,549 |
| FALL 2018 | 7,724 | 23,238 | 13,624 | 41,796 | 32,316 | 58,402 | 37,527 | 14,256 | 37,235 | 9,355 |
| FALL 2019 | 7,499 | 23,424 | 13,426 | 41,794 | 32,909 | 58,962 | 37,872 | 14,419 | 37,284 | 9,192 |
| 1-YR CHANGE | -3% | 1% | -1% | 0% | 2% | 1% | 1% | 1% | 0% | -2% |
| 5-YR CHANGE | -3% | -3% | -1% | 4% | 2% | 9% | 11% | 6% | 4% | -6% |

NCF & Poly Undergraduate Enrollment



| YEAR | Poly | NCF |
|-------------|-------|------|
| FALL 2015 | 887 | 854 |
| FALL 2016 | 1,282 | 861 |
| FALL 2017 | 1,439 | 838 |
| FALL 2018 | 1,389 | 808 |
| FALL 2019 | 1,267 | 703 |
| 1-YR CHANGE | -9% | -13% |
| 5-YR CHANGE | 43% | -18% |

Enrollment: New FTIC, Returning Students, & FCS AA Transfer 2015-2019



| | 5-year Trends | | | |
|------|---------------|----------|-----------|-----------------|
| | Overall | New FTIC | Returning | FCS AA Transfer |
| FAMU | ↓ -3% | ↓ -17% | ↓ -12% | ↑ 40% |
| FAU | ↓ -3% | ↓ -5% | ↑ 6% | ↓ -13% |
| FGCU | ↓ -1% | ↑ 3% | ↓ -5% | ↑ 3% |
| FIU | ↑ 4% | ↓ -10% | ↑ 8% | ↑ 5% |
| POLY | ↑ 43% | ↓ -29% | ↑ 149% | ↑ 103% |
| FSU | ↑ 2% | ↑ 16% | ↑ 1% | ↓ -17% |
| NCF | ↓ -18% | ↓ -44% | ↓ -6% | ↓ -14% |
| UCF | ↑ 9% | ↑ 12% | ↑ 12% | ↓ -1% |
| UF | ↑ 11% | ↑ 2% | ↑ 7% | ↑ 15% |
| UNF | ↑ 6% | ↑ 67% | ↑ 14% | ↓ -27% |
| USF | ↑ 4% | ↑ 14% | ↑ 6% | ↑ 2% |
| UWF | ↓ -6% | ↓ -12% | ↓ -13% | ↓ -8% |

Undergraduate Enrollment: Takeaways



Increasing Enrollment

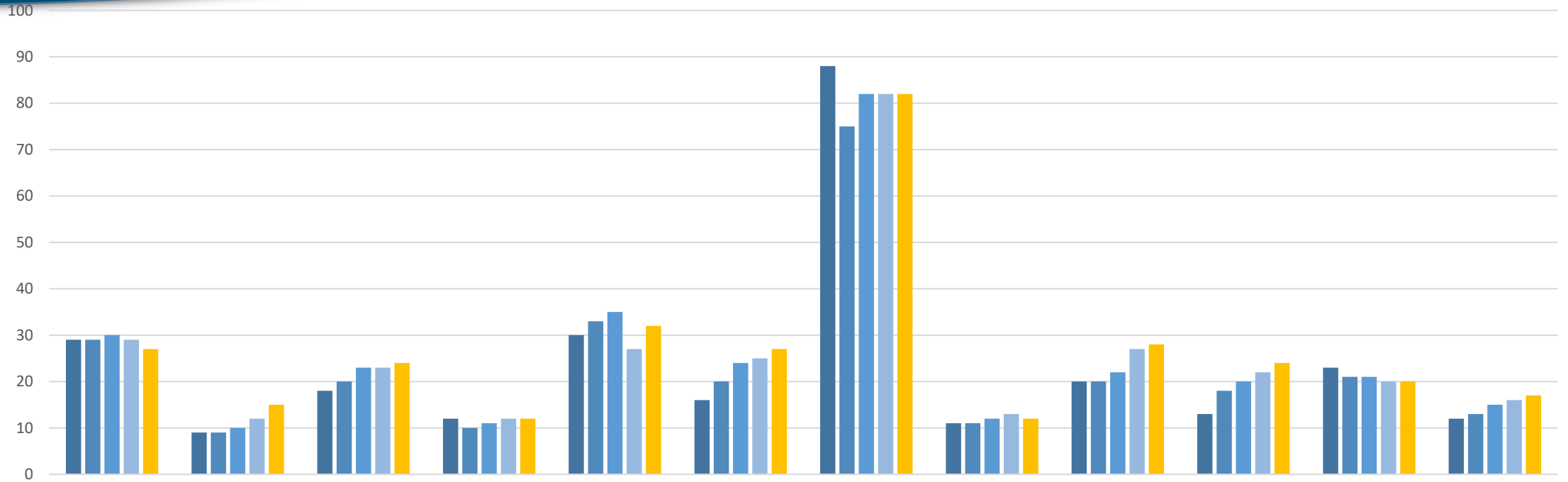
Decreasing Enrollment

| | 5-yr % Trend | Subgroup Trends |
|-----|--------------|---|
| UF | 11% | +7% RETURN +12% TRANSFER |
| UCF | 9% | +12% FTIC* +12% RETURN |
| UNF | 6% | +67% FTIC +14% RETURN -27% TRANSFER |

| | 5-yr % Trend | Subgroup Trends |
|------|--------------|--|
| NCF | -18% | -44% FTIC -6% RETURN |
| UWF | -6% | -12% FTIC -13% RETURN -8% TRANSFER |
| FAMU | -3% | -17% FTIC -12% RETURN |
| FAU | -3% | -5% FTIC -13% TRANSFER |

*FTIC enrollment growth was 1% in the last year

% of Undergraduates Completing 15 Credits



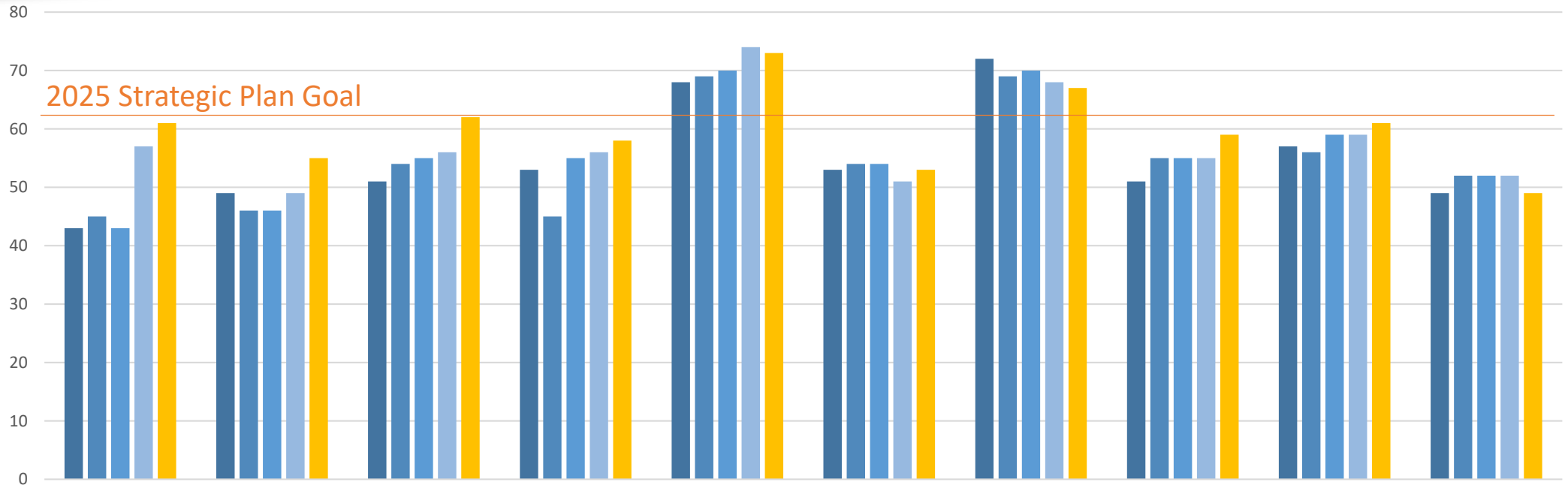
| | FAMU | FAU | FGCU | FIU | FPU | FSU | NCF | UCF | UF | UNF | USF | UWF |
|-------------|-----------|-----------|-----------|-----------|-----------|-----------|-----------|-----------|-----------|-----------|-----------|-----------|
| FALL 2015 | 29 | 9 | 18 | 12 | 30 | 16 | 88 | 11 | 20 | 13 | 23 | 12 |
| FALL 2016 | 29 | 9 | 20 | 10 | 33 | 20 | 75 | 11 | 20 | 18 | 21 | 13 |
| FALL 2017 | 30 | 10 | 23 | 11 | 35 | 24 | 82 | 12 | 22 | 20 | 21 | 15 |
| FALL 2018 | 29 | 12 | 23 | 12 | 27 | 25 | 82 | 13 | 27 | 22 | 20 | 16 |
| FALL 2019 | 27 | 15 | 24 | 12 | 32 | 27 | 82 | 12 | 28 | 24 | 20 | 17 |
| 1-YR CHANGE | -2 | 3 | 1 | 0 | 5 | 2 | 0 | -1 | 1 | 2 | 0 | 1 |
| 5-YR CHANGE | -2 | 6 | 6 | 0 | 2 | 11 | -6 | 1 | 8 | 11 | -3 | 5 |
| GOAL | 30 | 13 | 24 | 13 | 34 | 26 | 83 | 14 | 28 | 24 | 20 | 17 |

Overall KPI Performance Goals Met



| | FAMU | FAU | FIU | FGCU | FPOLY | FSU | NCF | UCF | UF | UNF | USF | UWF |
|---|-------------|-------|-------|-------|-------|-------|-------|-------|-------|-------|-------|-------|
| KPI#1: Public University National Ranking | Red | Green | Red | Green | Green | Green | Red | Red | Green | Green | Green | Red |
| KPI#2: Freshmen in Top 10% of High School Class | Red | White | Green | Green | Green | Green | Red | Green | Green | Red | Red | Red |
| KPI#3: Time to Degree for FTICs in 120hr programs | Red | Green | Green | Red | Green | Green | Green | Green | Green | Green | Green | Green |
| KPI#4: Six-Year FTIC Graduation Rates (full-& part-time students) | Green | Red | Green | Red | White | Green | Green | Green | Red | Green | Green | Red |
| KPI#5: FCS AA Transfer Three-Year Graduation Rate | New metrics | | | | | | | | | | | |
| KPI#6: Pell Recipient Four-Year Graduation Rate (for Full-Time FTIC) | | | | | | | | | | | | |
| KPI#7: Bachelor's Degrees Awarded (First Majors Only) | Red | Red | Green | Green | Red | Red | Green | Green | Green | Red | Green | Red |
| KPI#8: Graduate Degrees Awarded (First Majors Only) | Red | Red | Green | Red | Red | Red | Green | Green | Green | Red | Green | Red |
| KPI#9: Bachelor's Degrees Awarded to African-American & Hispanic Students | Red | Green | Green | Red | Red | Green | Red | Green | Green | Green | Green | Green |
| KPI#10: Percentage of Adult (Aged 25+) Undergraduates Enrolled | Red | Red | Red | Red | Red | Red | Green | Red | Green | Red | Red | Red |
| KPI#11: Percent of Undergraduate FTE in Online Courses | Green | Green | Green | Red | Green | Green | Green | Green | Green | Green | Red | Green |
| KPI#12: Percent of Bachelor's Degrees in STEM & Health | Green | Green | Red | Red | Red | Red | Red | Red | Green | Red | Green | Green |
| KPI#13: Percent of Graduate Degrees in STEM & Health | Red | Green | Red | Red | Green | Green | Green | Red | Green | Green | Green | Green |
| KPI#15: National Academy Memberships | Red | Red | Red | Red | Green | Green | Green | Green | Red | Green | Green | Green |
| KPI#16: Faculty Awards | Red | Green | Red | Green | Green | Green | Green | Red | Red | Green | Red | Green |
| KPI#17: Total Research Expenditures (\$M) | Green | Red | Green | Red | Green | Green | Red | Red | Green | Green | Red | Green |
| KPI#18: Research Expenditures Funded from External Sources | New metric | | | | | | | | | | | |
| KPI#19: Utility Patents Awarded (from the USPTO) | Red | Green | Green | Red | Green | Green | Green | Green | Green | Red | Green | Green |
| KPI#20: Number of Licenses/Options Executed Annually | Green | Green | Green | Green | Green | Green | Green | Red | Red | Red | Green | Green |
| KPI#21: Number of Start-up Companies Created | Red | Green | Red | Green | Green | Red | Green | Red | Green | Green | Green | Green |

3-Year Grad Rates: FCS-AA Degree Transfers

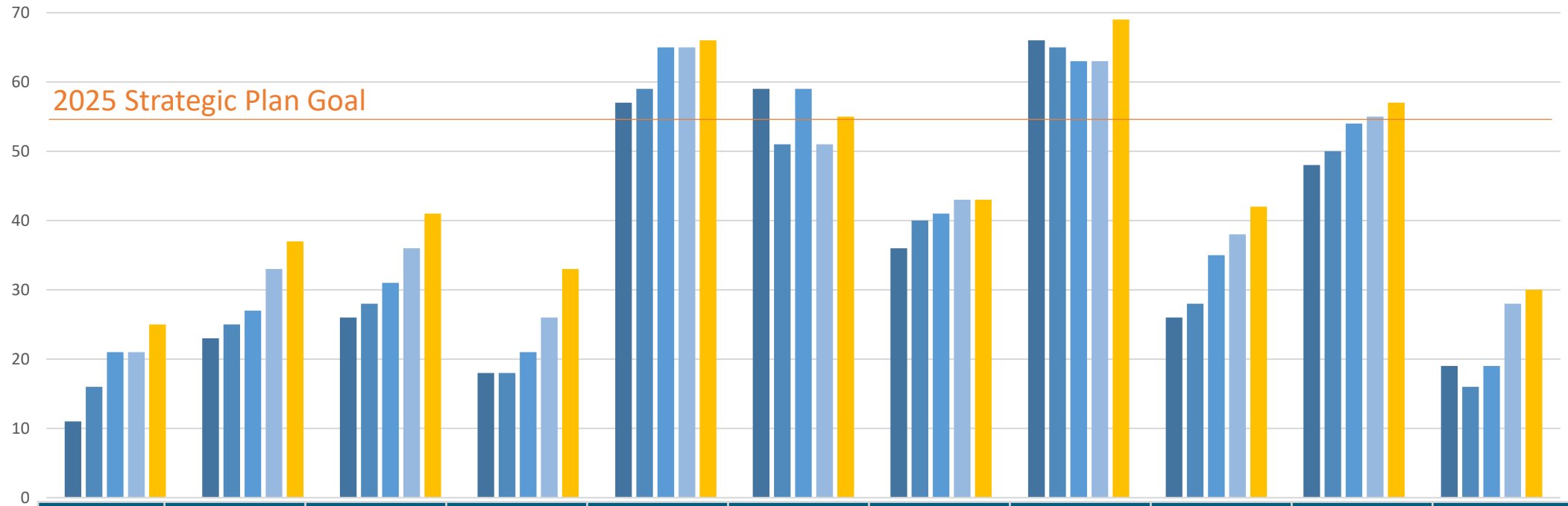


| | FAMU | FAU | FIU | FGCU | FSU | UCF | UF | UNF | USF | UWF |
|-------------|------|-----|-----|------|-----|-----|----|-----|-----|-----|
| 2012-15 | 43 | 49 | 51 | 53 | 68 | 53 | 72 | 51 | 57 | 49 |
| 2013-16 | 45 | 46 | 54 | 45 | 69 | 54 | 69 | 55 | 56 | 52 |
| 2014-17 | 43 | 46 | 55 | 55 | 70 | 54 | 70 | 55 | 59 | 52 |
| 2015-18 | 57 | 49 | 56 | 56 | 74 | 51 | 68 | 55 | 59 | 52 |
| 2016-19 | 61 | 55 | 62 | 58 | 73 | 53 | 67 | 59 | 61 | 49 |
| 1-YR CHANGE | 4 | 6 | 6 | 2 | -1 | 2 | -1 | 4 | 2 | -3 |

*This metric was approved by the Board October 30, 2019 and therefore did not have goals for last year.

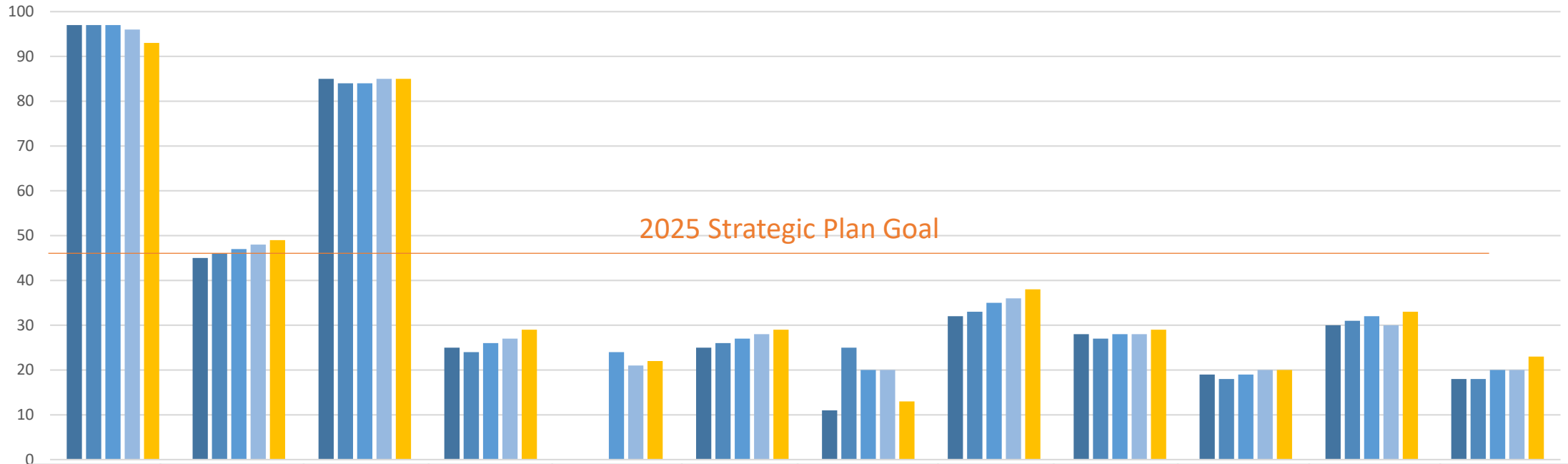
**NCF and Poly had fewer than 20 students in their cohorts.

4-Year Grad Rates: FTIC Pell Students



| | FAMU | FAU | FIU | FGCU | FSU | NCF | UCF | UF | UNF | USF | UWF |
|----------------|-----------|-----------|-----------|-----------|-----------|-----------|-----------|-----------|-----------|-----------|-----------|
| 2011-15 | 11 | 23 | 26 | 18 | 57 | 59 | 36 | 66 | 26 | 48 | 19 |
| 2012-16 | 16 | 25 | 28 | 18 | 59 | 51 | 40 | 65 | 28 | 50 | 16 |
| 2013-17 | 21 | 27 | 31 | 21 | 65 | 59 | 41 | 63 | 35 | 54 | 19 |
| 2014-18 | 21 | 33 | 36 | 26 | 65 | 51 | 43 | 63 | 38 | 55 | 28 |
| 2015-19 | 25 | 37 | 41 | 33 | 66 | 55 | 43 | 69 | 42 | 57 | 30 |
| 1-YR CHANGE | 4 | 4 | 5 | 7 | 1 | 4 | 0 | 6 | 4 | 2 | 2 |

% of Bachelor's Degrees Awarded to African-American & Hispanic Students



| | FAMU | FAU | FIU | FGCU | FPOLY | FSU | NCF | UCF | UF | UNF | USF | UWF |
|----------------|-----------|-----------|-----------|-----------|-----------|-----------|-----------|-----------|-----------|-----------|-------------|-----------|
| 2014-15 | 97 | 45 | 85 | 25 | 0 | 25 | 11 | 32 | 28 | 19 | 30 | 18 |
| 2015-16 | 97 | 46 | 84 | 24 | 0 | 26 | 25 | 33 | 27 | 18 | 31 | 18 |
| 2016-17 | 97 | 47 | 84 | 26 | 24 | 27 | 20 | 35 | 28 | 19 | 32 | 20 |
| 2017-18 | 96 | 48 | 85 | 27 | 21 | 28 | 20 | 36 | 28 | 20 | 30 | 20 |
| 2018-19 | 93 | 49 | 85 | 29 | 22 | 29 | 13 | 38 | 29 | 20 | 33 | 23 |
| 1-YR CHANGE | -3 | 1 | 0 | 2 | 1 | 1 | -7 | 2 | 1 | 0 | 3 | 3 |
| GOAL | 95 | 49 | 83 | 27 | 25 | 29 | 22 | 37 | 28 | 20 | 32.4 | 23 |

Licensure Exam Pass Rate: 2020 Summary



Licensure Exams in the Accountability Plans (# of institutions)*

Nursing (10)
Physical Therapy (7)

Pharmacy (3)
Medicine (5)

Veterinary (1)
Dentistry (1)

Law (4)

| | FAMU | FAU | FGCU | FIU | FSU | UCF | UF | UNF | USF | UWF |
|-------------|------|-----|------|-----|-----|-----|----|-----|-----|-----|
| ABOVE/TIED | 0 | 3 | 2 | 5 | 3 | 5 | 8 | 2 | 4 | 1 |
| BELOW | 4 | 1 | 0 | 1 | 2 | 0 | 2 | 0 | 2 | 0 |
| 1-YR CHANGE | - | - | - | - | -1 | - | -2 | - | -1 | - |

= 5 pts or more below benchmark

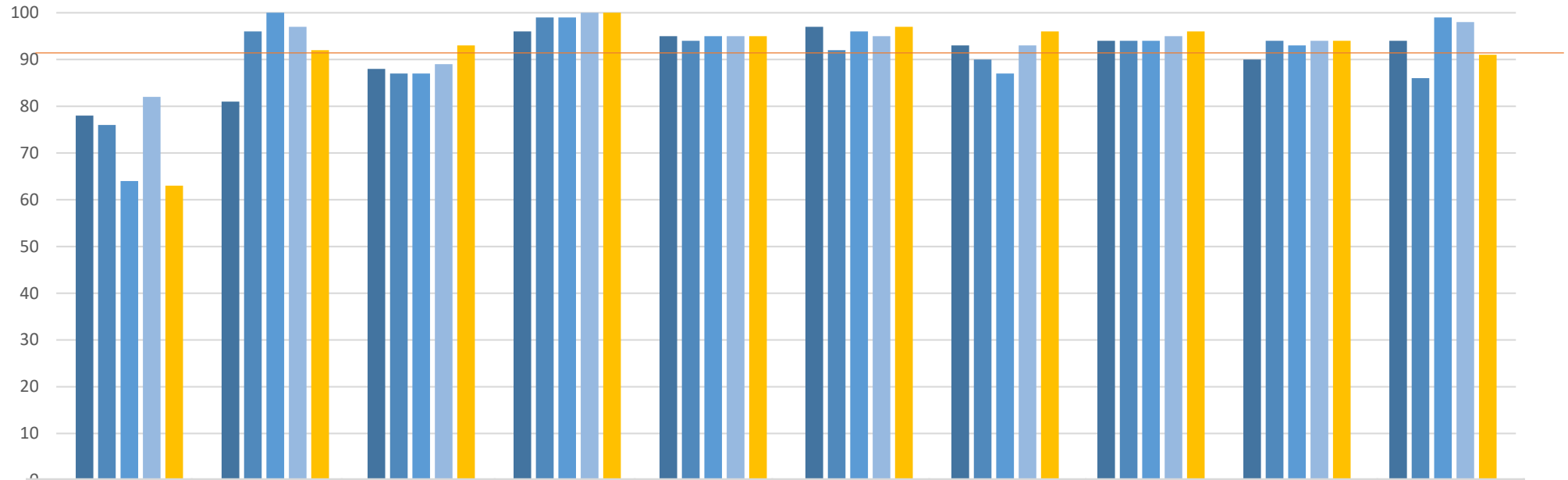
= less than 5 pts below benchmark

*Poly & NCF do not have programs that require licensure exams.

Exam Pass Rates: Nursing



2019
Benchmark

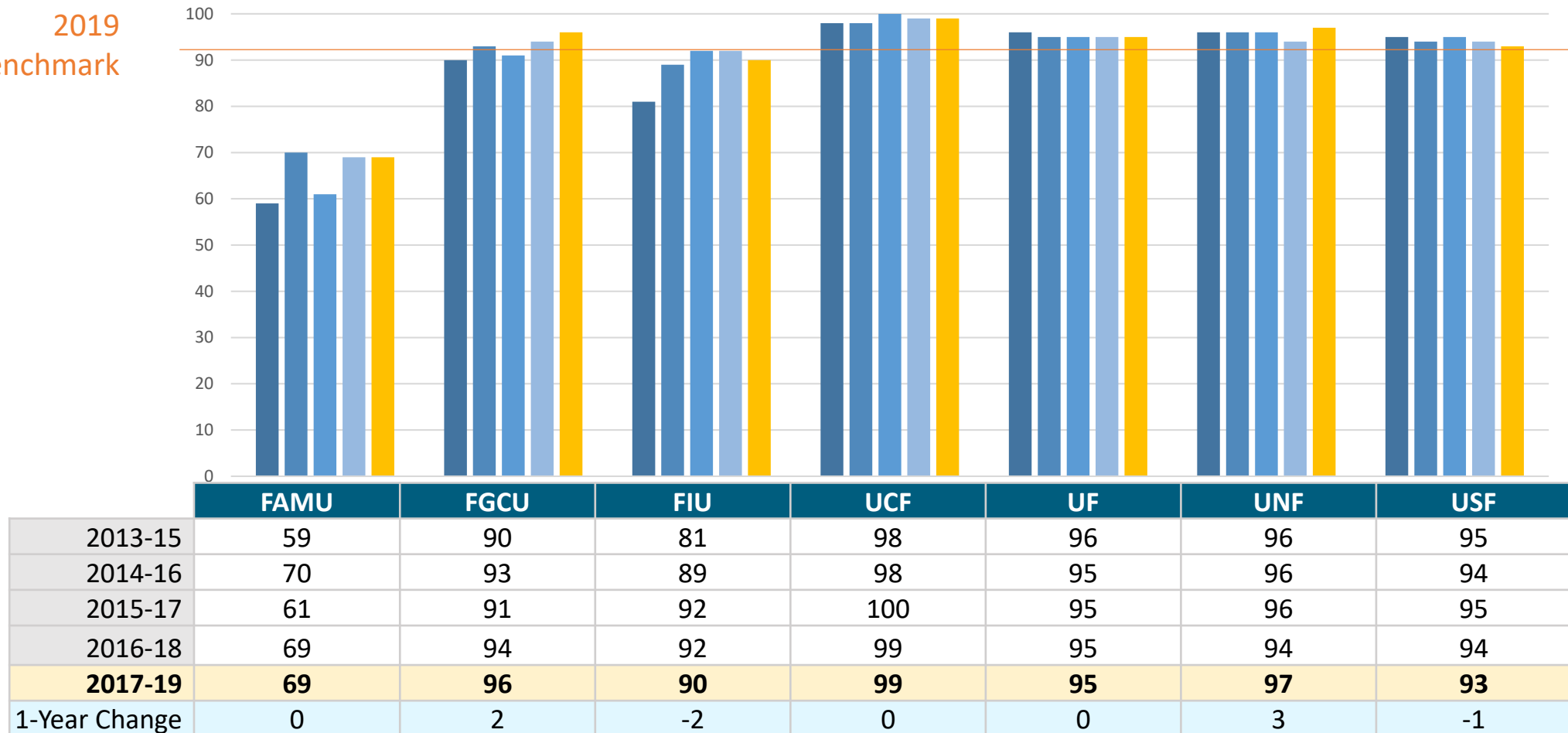


| | FAMU | FAU | FIU | FGCU | FSU | UCF | UF | UNF | USF | UWF |
|---------------|-----------|-----------|-----------|------------|-----------|-----------|-----------|-----------|-----------|-----------|
| 2015 | 78 | 81 | 88 | 96 | 95 | 97 | 93 | 94 | 90 | 94 |
| 2016 | 76 | 96 | 87 | 99 | 94 | 92 | 90 | 94 | 94 | 86 |
| 2017 | 64 | 100 | 87 | 99 | 95 | 96 | 87 | 94 | 93 | 99 |
| 2018 | 82 | 97 | 89 | 100 | 95 | 95 | 93 | 95 | 94 | 98 |
| 2019 | 63 | 92 | 93 | 100 | 95 | 97 | 96 | 96 | 94 | 91 |
| 1-Year Change | -19 | -5 | 4 | - | - | 2 | 3 | 1 | - | -7 |

Exam Pass Rate: Physical Therapy



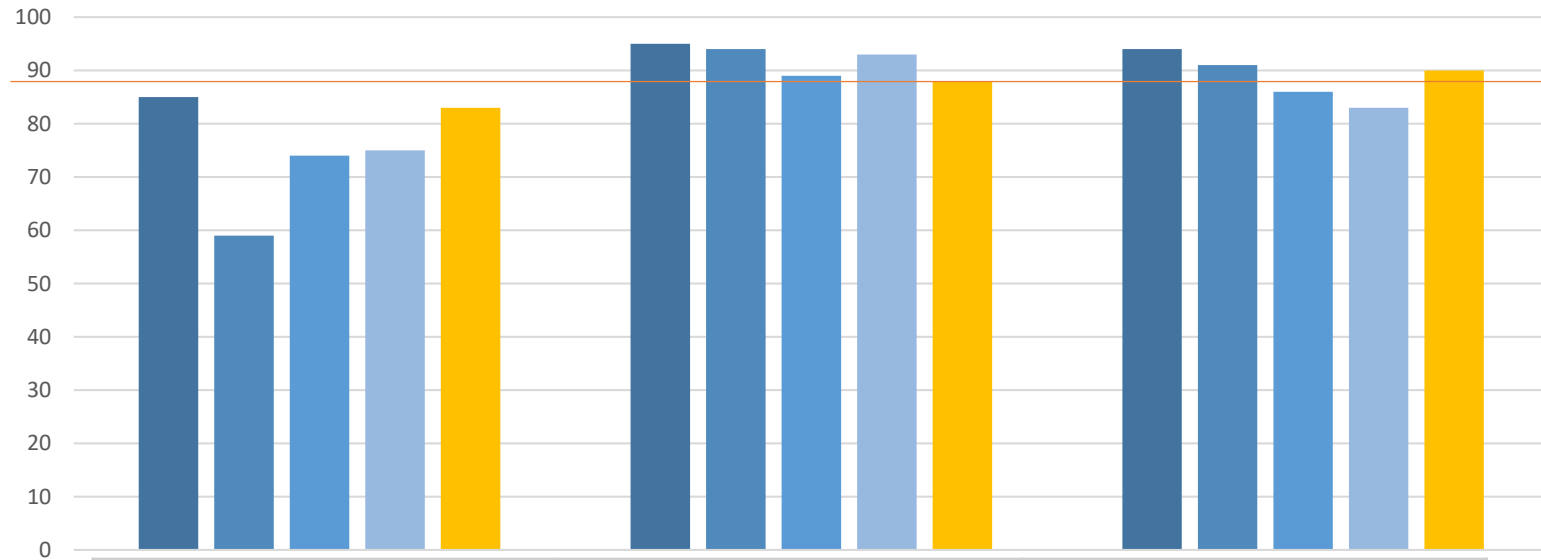
2019
Benchmark



Exam Pass Rate: Pharmacy



2019
Benchmark

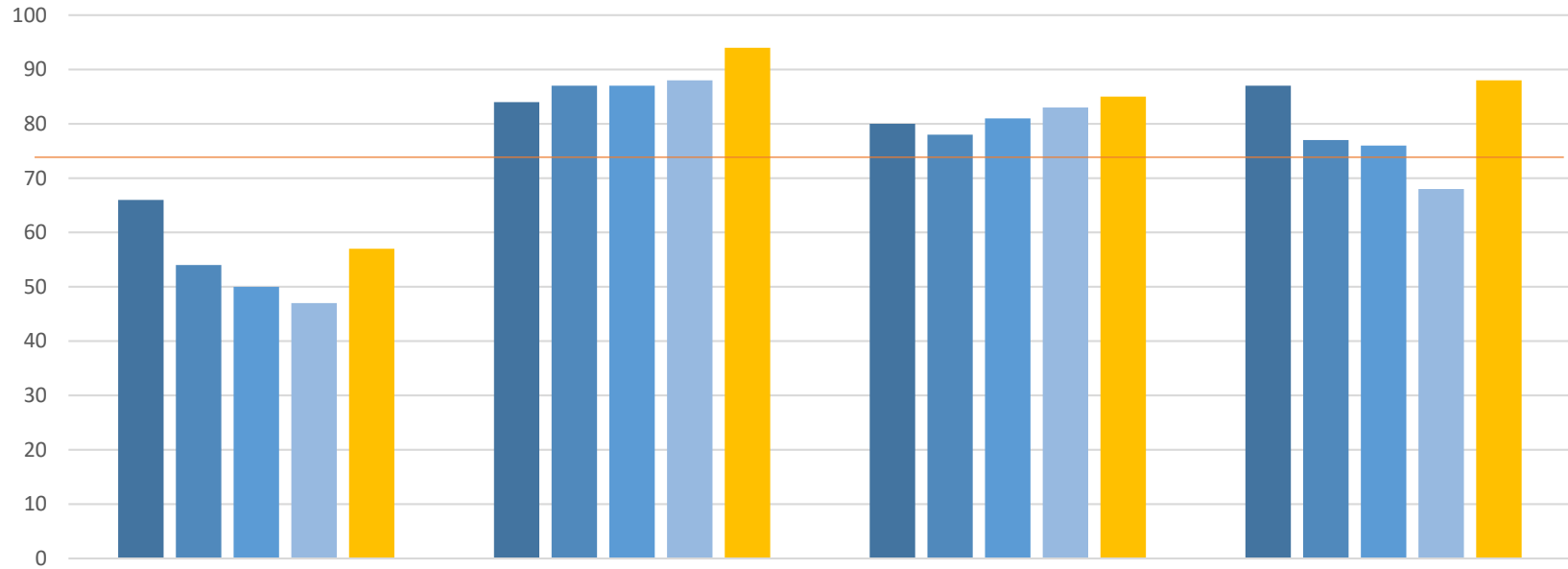


| | FAMU | UF | USF |
|---------------|-----------|-----------|-----------|
| 2015 | 85 | 95 | 94 |
| 2016 | 59 | 94 | 91 |
| 2017 | 74 | 89 | 86 |
| 2018 | 75 | 93 | 83 |
| 2019 | 83 | 88 | 90 |
| 1-Year Change | 8 | -5 | 7 |

Exam Pass Rate: Law



2019
Benchmark



| | FAMU | FIU | FSU | UF |
|---------------|-----------|-----------|-----------|-----------|
| 2015 | 66 | 84 | 80 | 87 |
| 2016 | 54 | 87 | 78 | 77 |
| 2017 | 50 | 87 | 81 | 76 |
| 2018 | 47 | 88 | 83 | 68 |
| 2019 | 57 | 94 | 85 | 88 |
| 1-Year Change | 10 | 6 | 2 | 20 |

Overall KPI Performance

Year-Over-Year Change




| | FAMU | FAU | FIU | FGCU | FPOLY | FSU | NCF | UCF | UF | UNF | USF | UWF |
|---|--------|--------|--------|--------|--------|--------|--------|--------|--------|--------|--------|--------|
| KPI#1: Public University National Ranking | Yellow | Yellow | Green | Yellow | Yellow | Green | Red | Red | Yellow | Yellow | Green | Yellow |
| KPI#2: Freshmen in Top 10% of High School Class | Green | Green | Green | Green | Yellow | Green | Red | Green | Green | Red | Green | Red |
| KPI#3: Time to Degree for FTICs in 120hr programs | Green | Green | Green | Green | Red | Green | Green | Yellow | Yellow | Green | Yellow | Green |
| KPI#4: Six-Year FTIC Graduation Rates [full- & part-time students] | Green | Red | Green | Green | Yellow | Yellow | Green | Yellow | Red | Green | Green | Green |
| KPI#5: FCS AA Transfer Three-Year Graduation Rate | Green | Green | Green | Green | Red | Red | Yellow | Green | Red | Green | Green | Red |
| KPI#6: Pell Recipient Four-Year Graduation Rate (for Full-Time FTIC) | Green | Green | Green | Green | Yellow | Green | Green | Yellow | Green | Green | Green | Green |
| KPI#7: Bachelor's Degrees Awarded [First Majors Only] | Green | Red | Green | Green | Green | Red | Green | Green | Green | Green | Green | Green |
| KPI#8: Graduate Degrees Awarded [First Majors Only] | Red | Red | Green | Green | Yellow | Red | Green | Green | Red | Green | Green | Red |
| KPI#9: Bachelor's Degrees Awarded to African-American & Hispanic Students | Red | Green | Yellow | Green | Green | Green | Red | Green | Green | Yellow | Green | Green |
| KPI#10: Percentage of Adult (Aged 25+) Undergraduates Enrolled | Yellow | Red | Yellow | Yellow | Red | Red | Yellow | Yellow | Yellow | Red | Red | Red |
| KPI#11: Percent of Undergraduate FTE in Online Courses | Green | Green | Green | Red | Yellow | Green | Yellow | Green | Green | Green | Yellow | Green |
| KPI#12: Percent of Bachelor's Degrees in STEM & Health | Green | Green | Red | Green | Yellow | Yellow | Red | Green | Green | Yellow | Green | Green |
| KPI#13: Percent of Graduate Degrees in STEM & Health | Red | Green | Green | Green | Yellow | Yellow | Yellow | Red | Yellow | Green | Green | Green |
| KPI#15: National Academy Memberships | Yellow | Yellow | Green | Yellow | Yellow | Yellow | Yellow | Green | Yellow | Yellow | Green | Yellow |
| KPI#16: Faculty Awards | Yellow | Yellow | Red | Yellow | Yellow | Green | Yellow | Red | Green | Red | Red | Yellow |
| KPI#17: Total Research Expenditures (\$M) | Green | Green | Green | Green | Green | Green | Green | Green | Green | Green | Green | Green |
| KPI#18: Research Expenditures Funded from External Sources | Green | Green | Green | Green | Green | Green | Green | Green | Green | Yellow | Red | Green |
| KPI#19: Utility Patents Awarded [from the USPTO] | Yellow | Green | Red | Yellow | Yellow | Green | Yellow | Green | Green | Yellow | Green | Yellow |
| KPI#20: Number of Licenses/Options Executed Annually | Green | Green | Green | Yellow | Yellow | Green | Yellow | Red | Red | Yellow | Green | Yellow |
| KPI#21: Number of Start-up Companies Created | Yellow | Green | Red | Yellow | Yellow | Yellow | Yellow | Red | Green | Green | Yellow | Yellow |


Academic Programs 2020-21





| | FAMU | FAU | FGCU | FIU | POLY | FSU | New College | UCF | UF | UNF | USF | UWF | Total |
|------------------|----------|----------|----------|----------|----------|----------|-------------|-----------|----------|----------|----------|----------|-----------|
| Bachelors | 1 | 4 | 3 | 4 | 1 | 2 | 1 | 1 | - | 5 | 2 | 1 | 25 |
| Masters | 1 | 1 | 3 | 3 | 3 | 4 | 1 | 5 | 4 | 3 | - | 1 | 29 |
| Doctoral | 1 | 1 | - | 1 | - | - | - | 5 | - | - | - | - | 8 |
| Total | 3 | 6 | 6 | 8 | 4 | 6 | 2 | 11 | 4 | 8 | 2 | 2 | 62 |


79%
Programs of Strategic Emphasis

 **Education** **4**

 **Gap** **2**

 **Global** **3**

 **Health** **6**

 **STEM** **34**

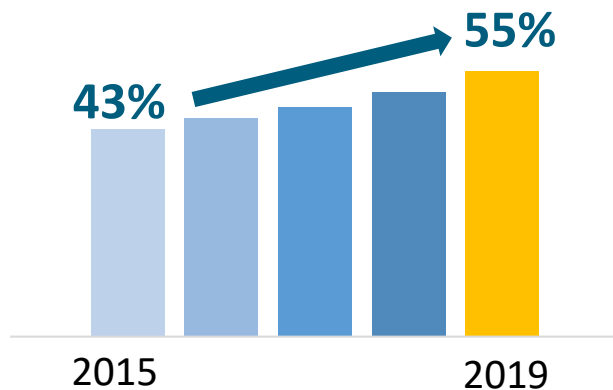
TBD **5**

Graduation Rate Improvement Plans: Annual Update



- ✓ Required in Statute beginning June 2018
- ✓ Identify initiatives for timely graduation
- ✓ Implement financial aid program to support students taking 15 credit hours

System 4-yr grad rates continue to increase



Common Themes in Plans

- ↑ More financial aid to support on-time graduation
- ↑ More offerings of in-demand courses
- 📈 Focus on 15 hrs
- 📚 Improved student support: advising, mentoring, & tutoring

Unique Initiatives

FGCU ↑6.9%
Expanded honors college increased 4-year grad rates for those students

UNF ↑6.0%
Launched program for students challenged with degree progression

FAMU ↑5.2%
Created academic progression grants & awarded 1,800

Preeminent Research Universities



| METRICS | | Preeminent | | |
|-----------------------|--------------------------|------------|-----------|-----------|
| | | FSU | UF | USF-T |
| A | GPA and SAT Score | ● | ● | ● |
| B | National Rankings | ● | ● | ● |
| C | Freshman Retention | ● | ● | ● |
| D | 4yr Graduation Rate | ● | ● | ● |
| E | Nat. Academy Members | ● | ● | ● |
| F | Total R&D Expenditures | ● | ● | ● |
| G | Non-Health Sciences R&D | ● | ● | ● |
| H | Nat. Ranking in R&D | ● | ● | ● |
| I | Patents Awarded | ● | ● | ● |
| J | Doctoral Degrees | ● | ● | ● |
| K | Post-Doctoral Appointees | ● | ● | ● |
| L | Endowment Size (\$M) | ● | ● | ● |
| BENCHMARKS MET | | 12 | 12 | 12 |

| Emerging Preeminent | |
|---------------------|----------|
| UCF | FIU |
| ● | ● |
| ● | |
| ● | |
| | |
| ● | ● |
| | |
| ● | ● |
| ● | ● |
| ● | ● |
| ● | ● |
| | ● |
| | |
| 8 | 7 |

System Summary Preview



- System performance on PBF metrics
- Degrees awarded
- Research metrics
- System enrollment trends



www.flbog.edu