



BOARD *of* GOVERNORS

State University System of Florida

Research Dashboard

Dr. Jan Ignash, Vice Chancellor for Academic and Student Affairs
March 28, 2018

www.flbog.edu



Recent Efforts to Strengthen SUS Research

SUS Progress

- Vice Presidents for Research meet several times a year, 2014 – present
- Annual Federal R&D Workshops with Funding Agencies
- Shared/common IRB approved 2015
- Approval of dashboard March 2017
- Board of Governors major focus on research, including LBRs, since 2016

Number of Dashboard Metrics

Categories	Existing	New	Total
Grants & Contracts	5	1	6
Innovation	3	3	6
People	3	1	4
ROI	0	3	3
TOTAL	11	8	19



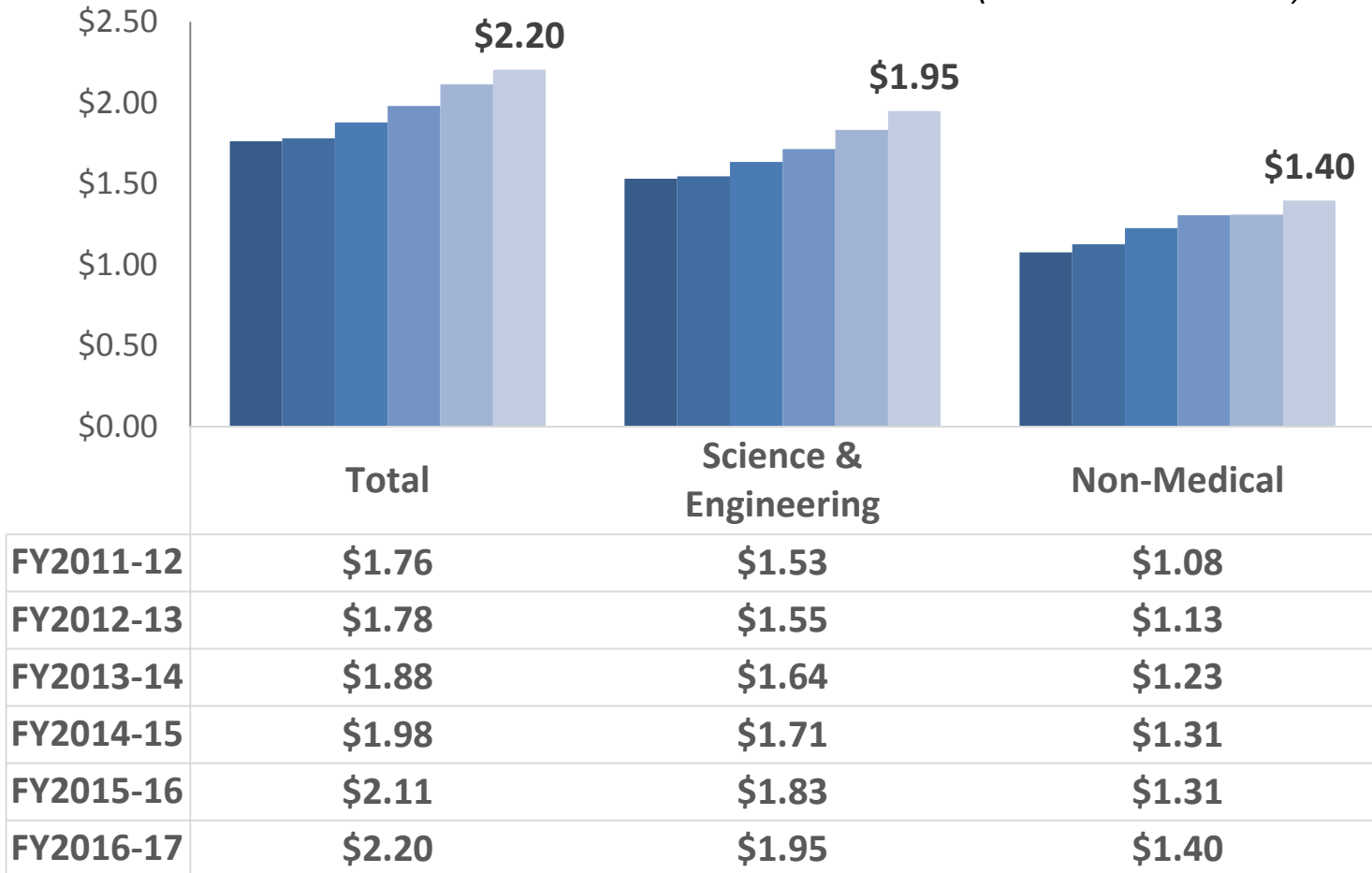
Research Dashboard: Grants & Contracts

	METRICS	FY	SUS
1	Total R&D Expenditures	2016-17	\$2.21 B
2	Federal R&D Expenditures	2016-17	\$948 M
3	Science & Engineering R&D Expenditures	2016-17	\$1.95 B
4	Non-Medical R&D Expenditures	2016-17	\$1.4 B
5	Number of Grants/Contracts between Two or More SUS Institutions	2016-17	IN-PROGRESS



Research Dashboard: Grants & Contracts Details

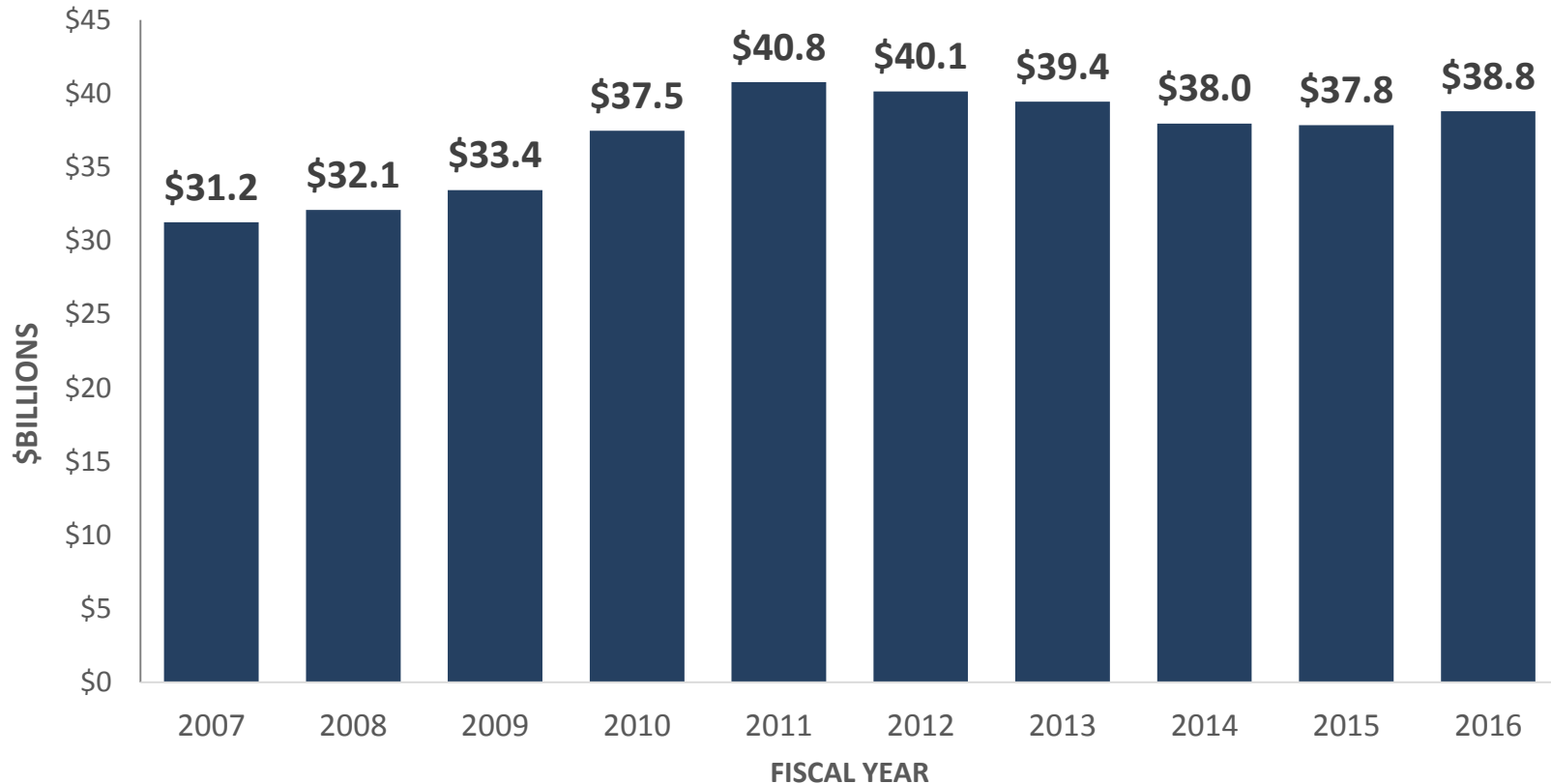
R&D Expenditures within the SUS
(Dollars in Billions)





Federal R&D Expenditures in All Universities in U.S.

(Dollars in Billions, actual, not adjusted for inflation)



During this same time, SUS expenditures from external sources increased by 8%.

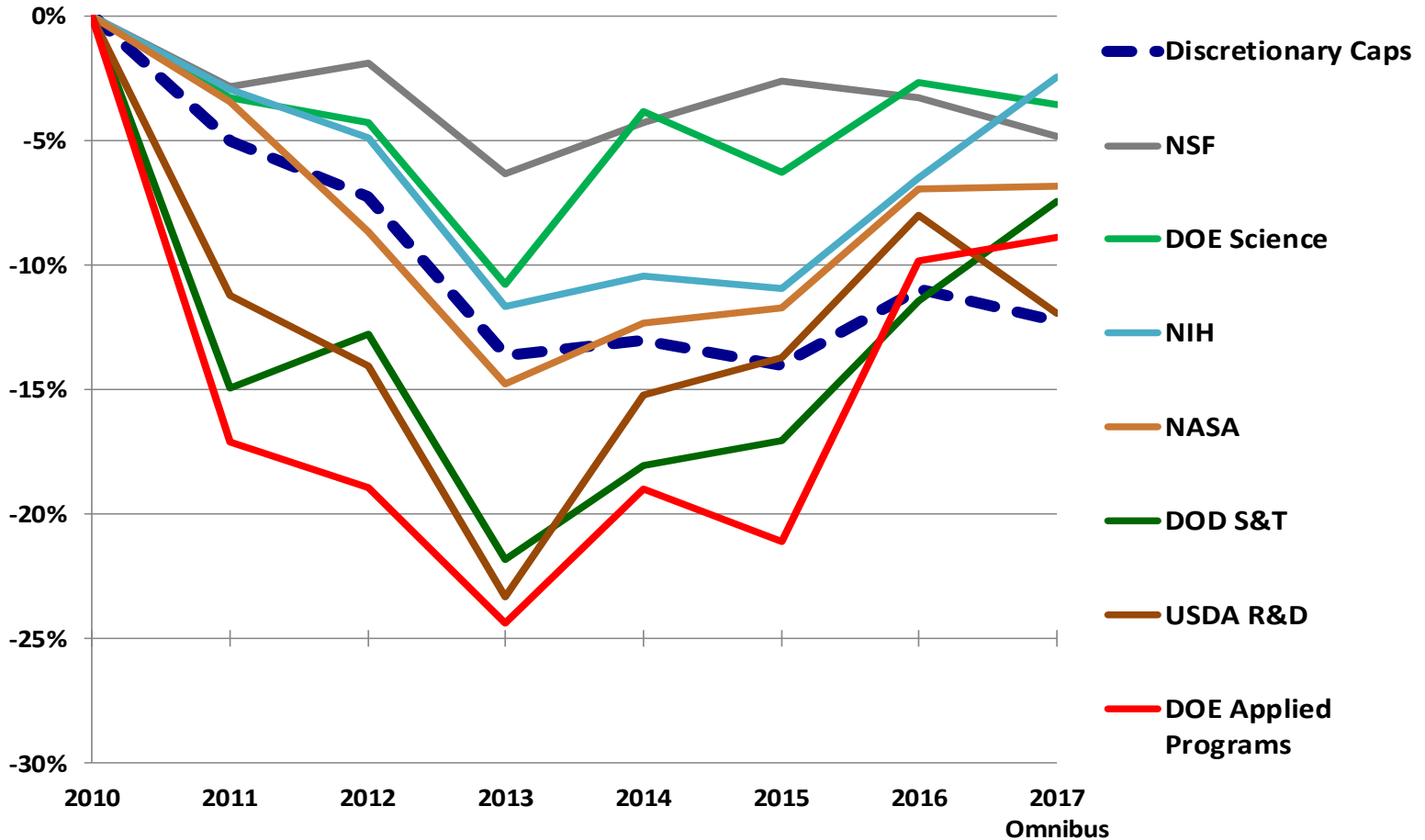


Trends in Federal Funding of Research

Federal S&T Spending Since FY 2010

Percent change from FY10 levels, constant dollars

%
Decrease in Federal
Funding



Based on AAAS analyses of historical OMB, agency, and appropriations data. © 2017 AAAS



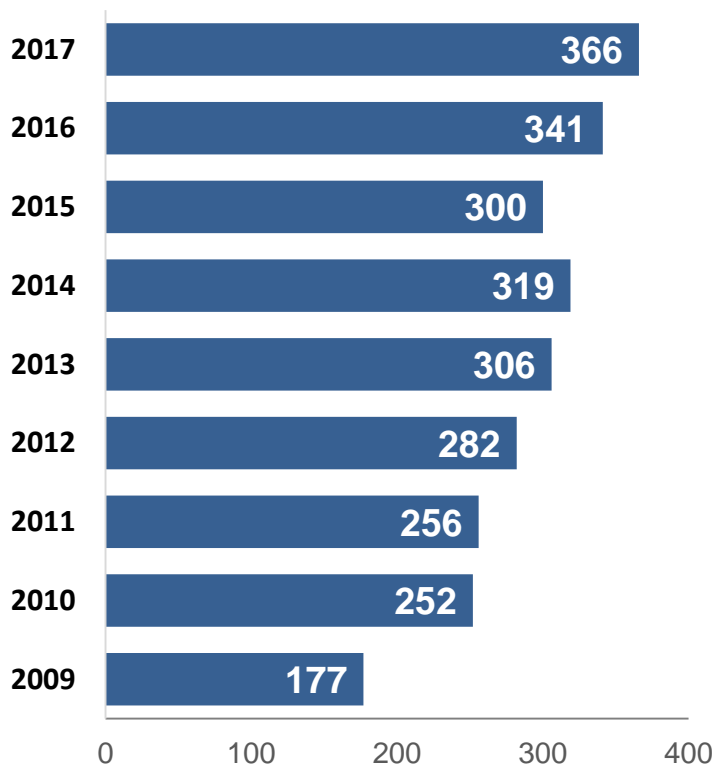
Research Dashboard: Innovation

	METRICS	YEAR	SUS
6	Patents Awarded (over 3-year period)	2015-2017	1,007
7	Number of Industry-related Grants and Contracts	FY2016-17	4,646
8	Industry Related R&D Expenditures (\$ Millions)	FY2016-17	\$192.5 M
9	Number of Startups	2014-15	54
10	Number of National Academy of Inventors Fellows	2017	63
11	Number of I-Corps teams	FY2014-16	38
12	Number of Licenses and Options Executed	2014-15	441

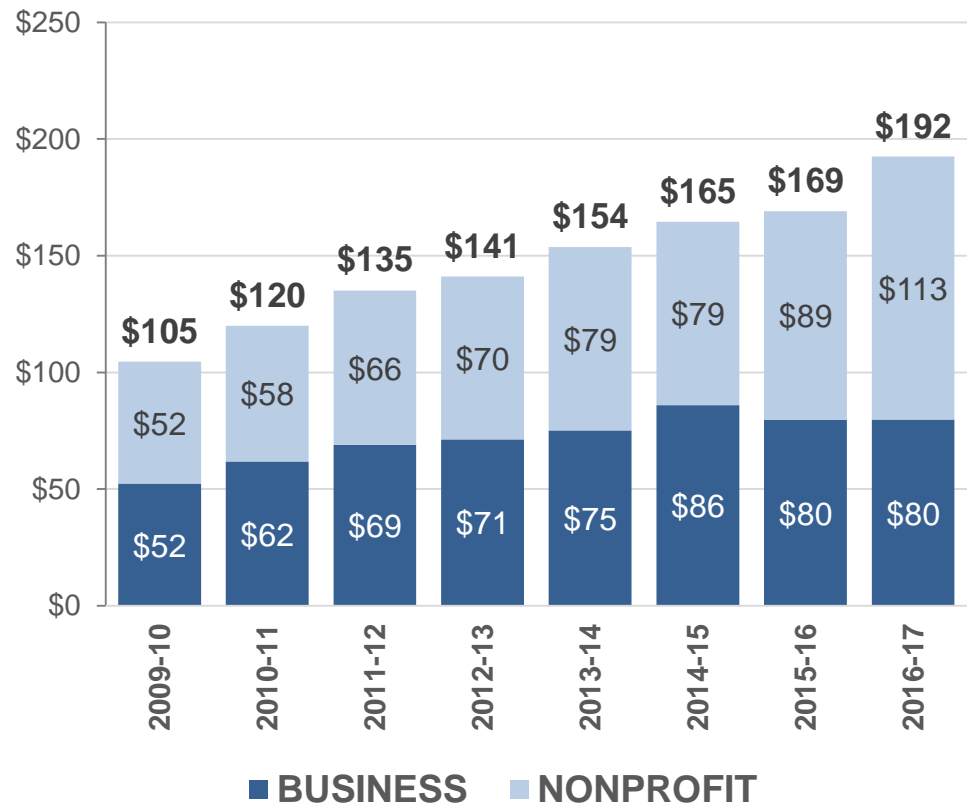


Research Dashboard: Innovation Details

Number of Utility Patents Awarded to the SUS Annually
(by USPTO)



Industry-Related R&D Expenditures





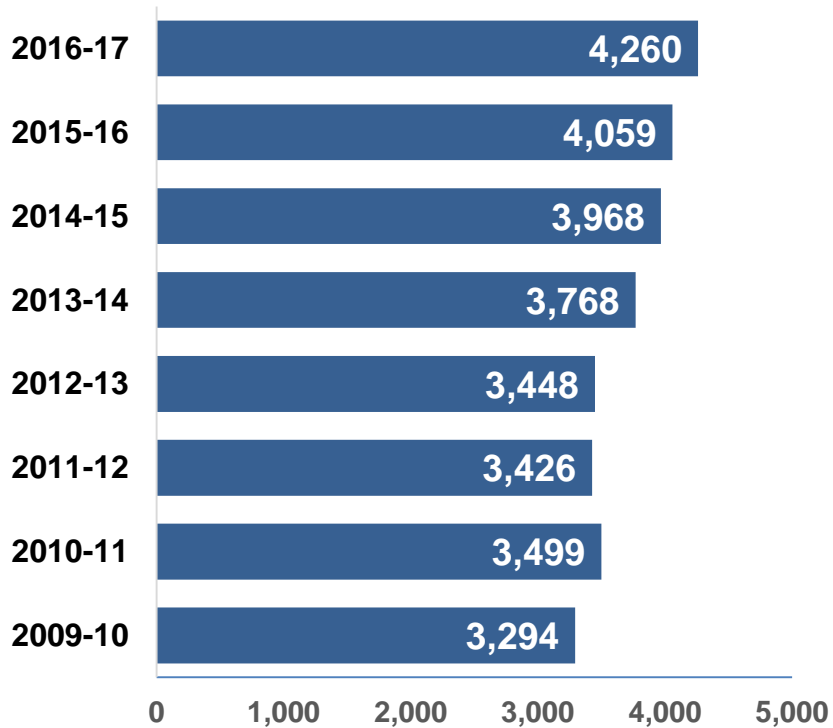
Research Dashboard: People

	METRICS	YEAR	SUS
13	Number of Undergraduate Students Engaged in Research	TO BE DETERMINED	
14	Doctoral Degrees Awarded	AY2016-17	4,260
15	Number of Postdoctoral Appointees	Fall 2016	1,475
16	National Academy Members (NAS, NAE, NAM)	2017	58

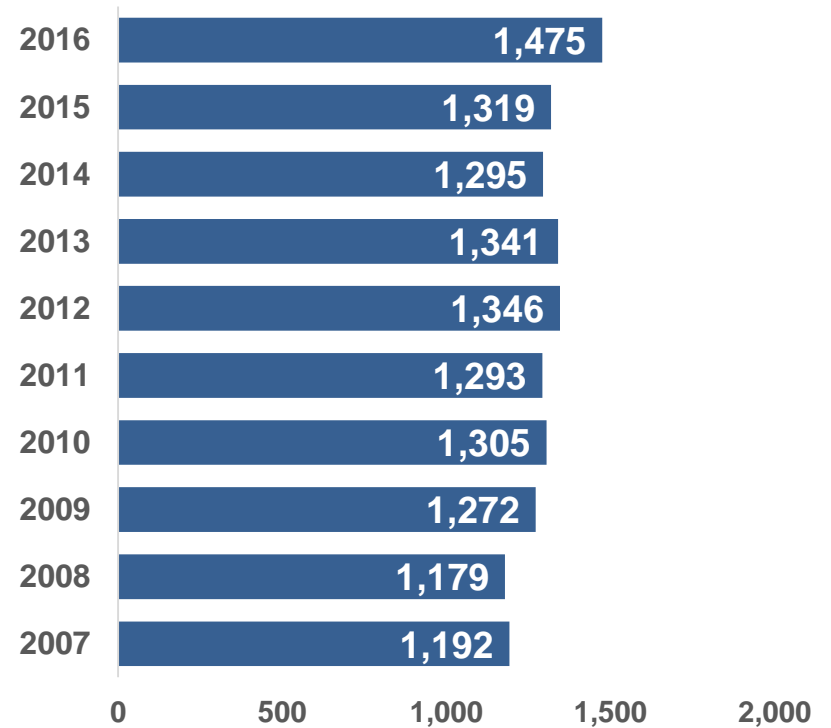


Research Dashboard: People Details

Number of Doctoral Degrees Awarded within the SUS Annually
(includes Professional Health Degrees)



Number of Post-Doctoral Appointees within the SUS
(Fall terms only)





Research Dashboard: Return on Investment

	METRICS	FY	SUS
17	Total number of jobs supported from external funding	2016-17	18,920
18	Economic Impact of State Funding (\$ Million)	2016-17	\$636.5 M
19	Economic Impact of Federal Funding (\$ Billion)	2016-17	\$2.84 B



Research Dashboard: Return on Investment Comparison with Ten Largest States

STATE	ECONOMIC ACTIVITY \$M	NIH AWARDS \$M	RETURN ON INVESTMENT (ROI)	JOBS PER \$1M NIH AWARDS
TEXAS	\$3,820.5	\$1,160.6	3.29	15.683
FLORIDA	\$2,006.7	\$649.9	3.09	15.946
CALIFORNIA	\$11,031.2	\$3,946.4	2.80	13.477
OHIO	\$2,047.0	\$754.3	2.71	13.548
MICHIGAN	\$1,835.9	\$707.7	2.59	13.567
PENN.	\$4,235.8	\$1,672.9	2.53	12.439
N. CAROLINA	\$3,095.0	\$1,245.8	2.48	14.599
NEW YORK	\$5,905.6	\$2,386.0	2.48	10.535
MASSACHUSETTS	\$6,353.8	\$2,716.7	2.34	11.490
MARYLAND	\$3,742.6	\$1,611.9	2.32	12.130



Key Take-Aways

1. In a tough economic climate, SUS research has grown 25% over the last 5 years.
 - During FY2017, the total expenditures for the SUS climbed to \$2.2 BILLION dollars.
 - This is good news as the System is on pace to reach the 2025 System Strategic Plan goal of \$2.29B.
2. We're making progress on the innovation metrics, too, with patents and industry-related R&D expenditures increasing.
3. We are a very efficient state, showing excellent return for the research dollars invested. We are 2nd among the 10 largest states on ROI for economic activity divided by the amount of NIH awards and our jobs ratio is the highest.



BOARD *of* GOVERNORS

State University System of Florida

www.flbog.edu