



New College
THE HONORS COLLEGE of Florida

“Amazing Minds, Limitless Possibilities”

Board of Governors Meeting
University Work Plan Presentation
June 19, 2013
University of South Florida

Themes for 2013-14 Work Plan



Themes for 2013-14 Work Plan

Doing even better what we already do well



Themes for 2013-14 Work Plan

Doing even better what we already do well

Contributing to the Florida SUS in new ways

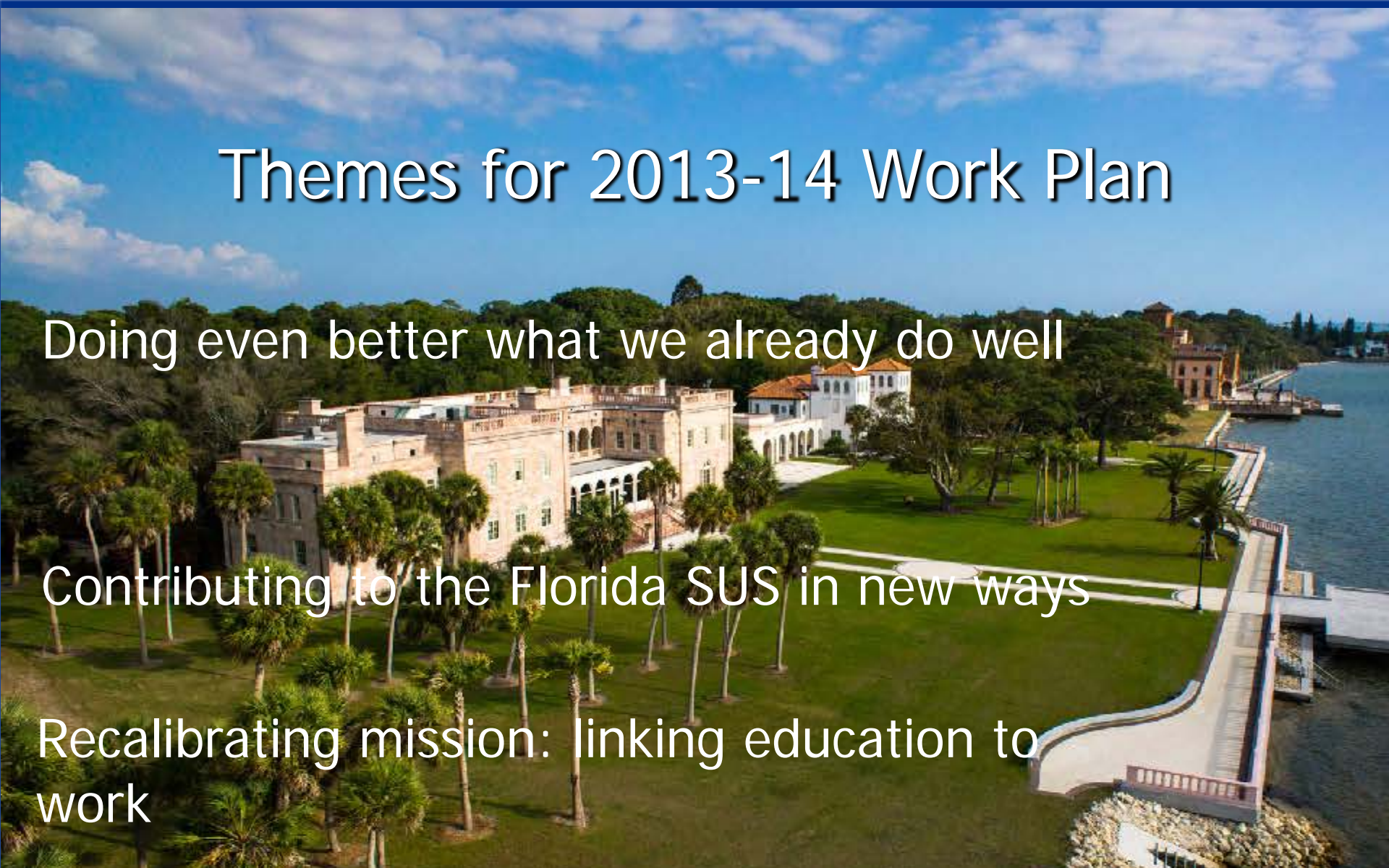


Themes for 2013-14 Work Plan

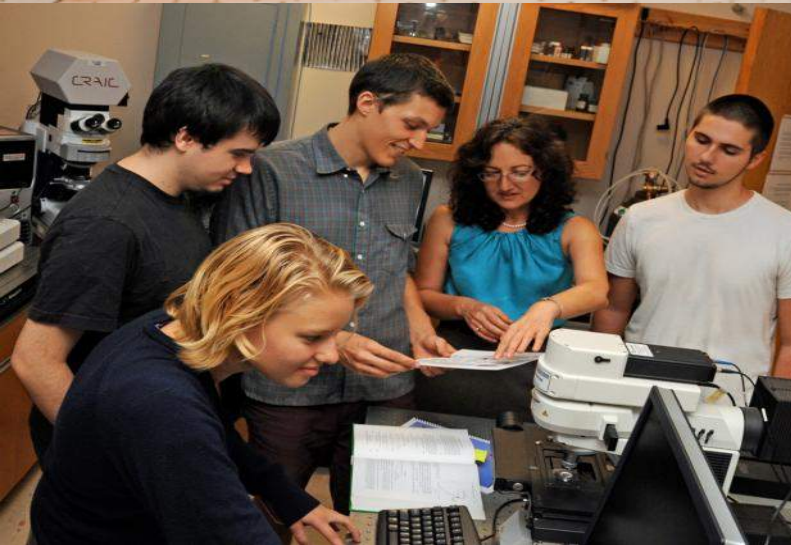
Doing even better what we already do well

Contributing to the Florida SUS in new ways

Recalibrating mission: linking education to work



NCF is in the tiniest sector
of US education



A map of the United States showing state boundaries. The map is light gray with dark gray outlines for each state. In the bottom left corner, there is an inset for Alaska and Hawaii. In the bottom right corner, there is a small legend box with three entries: a gray square, a white square, and a white square with a gray border.

21 M students

4589 Institutions



21 M students

4589 Institutions

Res 1's, Metropolitan/Doc, Regional Comps,
Masters, Baccalaureate, Community Colleges,
Special Focus, Tribal, For Profits

Distinctively American Institutions:



Research 1

(Multiversity)

Liberal Arts College

(Residential Undergraduate Arts & Sciences College)

Distinctively American Institutions:

Research 1's

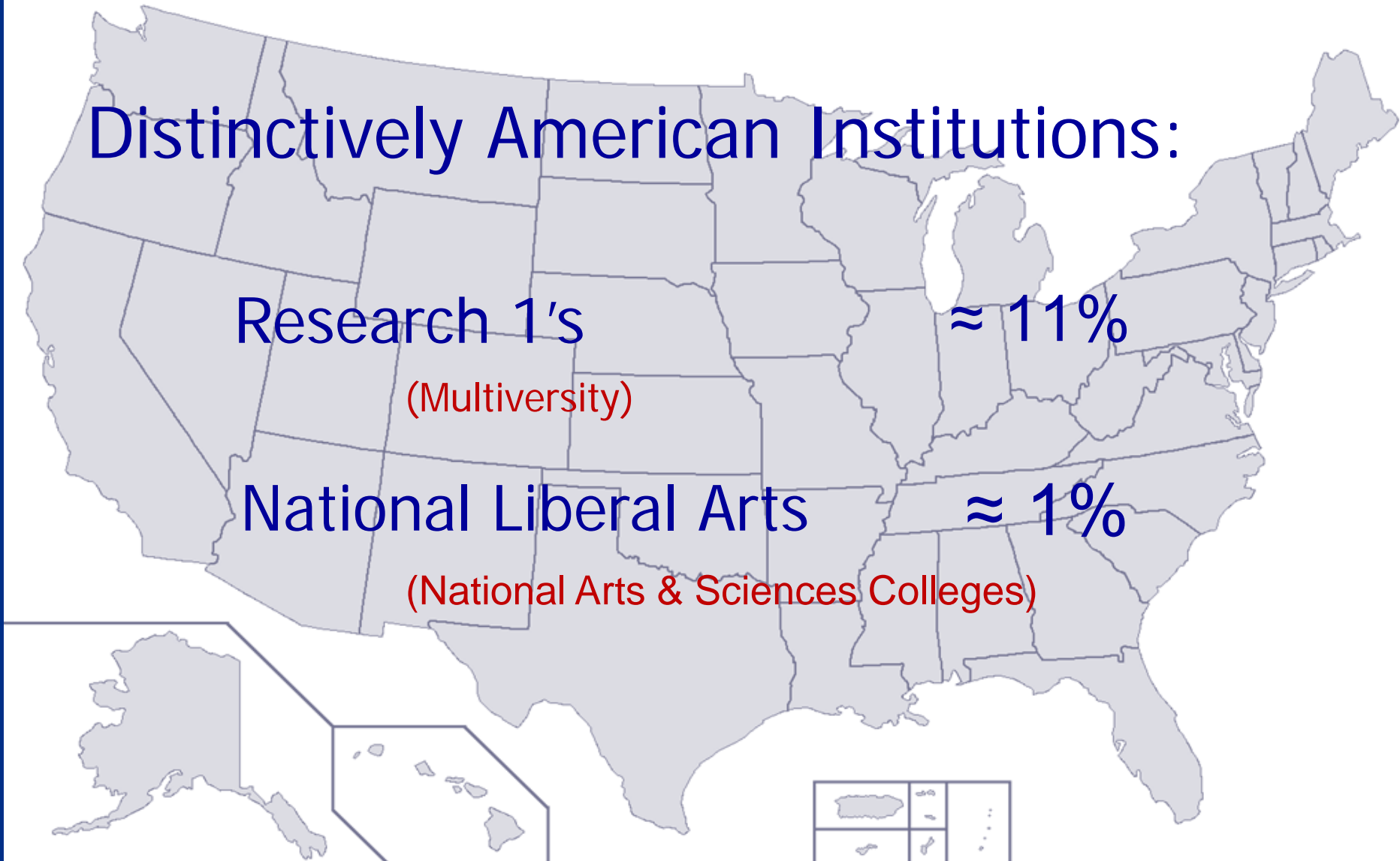
(Multiversity)

≈ 11%

National Liberal Arts

(National Arts & Sciences Colleges)

≈ 1%



Distinctively American Institutions:

Research 1's

(Multiversity)

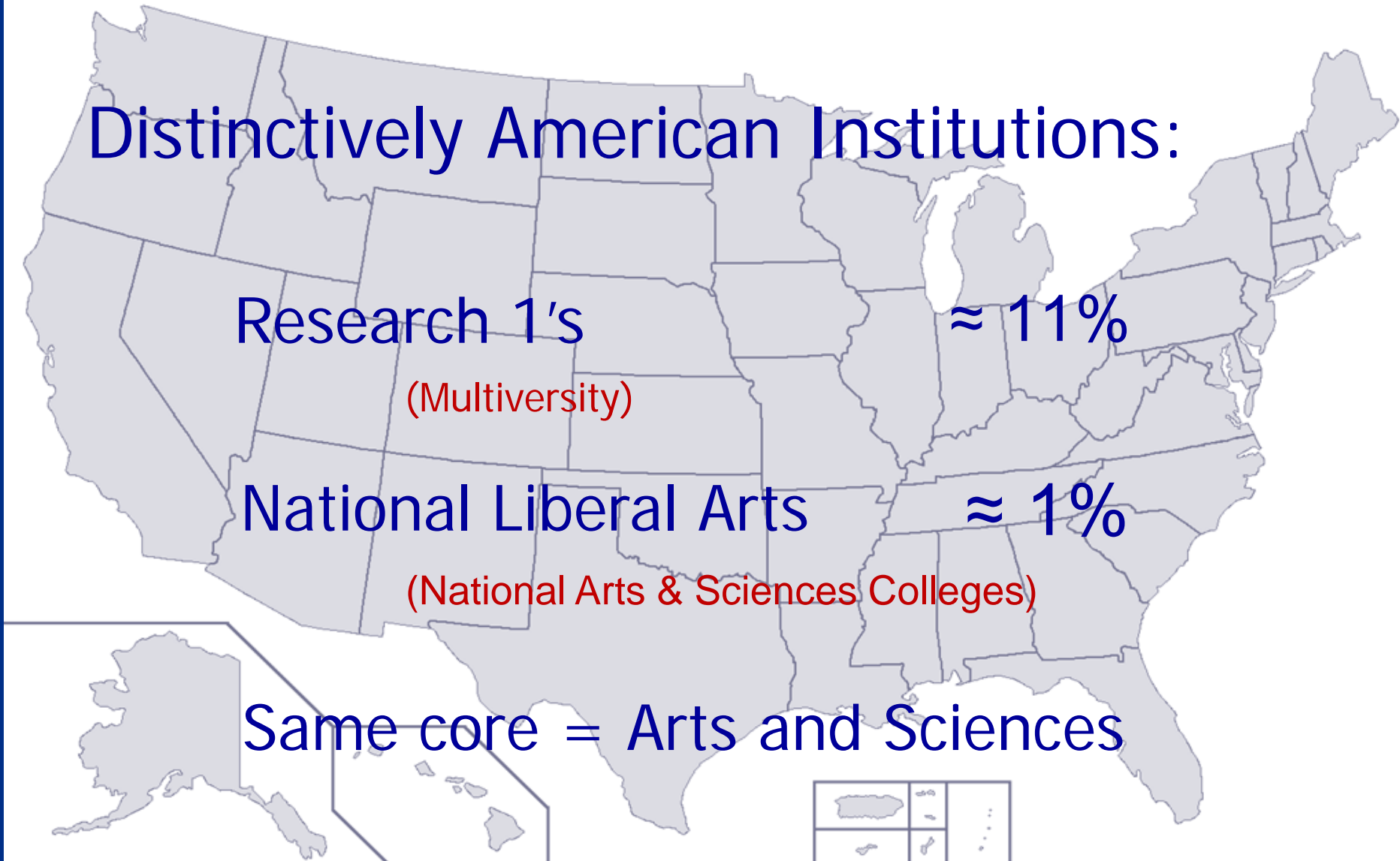
≈ 11%

National Liberal Arts

≈ 1%

(National Arts & Sciences Colleges)

Same core = Arts and Sciences



Nat'l Arts & Science Colleges

- Not for everyone
- Superb faculty & students
- Close interactions
- Faculty + students = curr
- Outrageous outcomes



Best education

- anywhere
- at any price

Challenges

- Cost
- Knowledge Explosion
- Recession & push for training
- Skepticism



- Smallest sector
- Most diverse

New College – no exception

Shares strengths

- State's designated honors college
- High touch
- Outrageous outcomes = state's hedge fund



Shares challenges

- visibility
- cost

Exemplary and Nationally Recognized:

- Ranked #3 Best Value in Public Higher Education by the *Princeton Review/USA Today* in 2013
- Ranked #5 among all Public Liberal Arts Colleges by *U.S. News & World Report* in 2013
- Ranked #5 in Pell Grant students graduating at higher rates than overall students. (*USA News* Oct. 4, 2012).

❖ Evidence suggests mindfulness is an attentional self-regulatory skill. Concentrative attention is focusing on a single object¹. Receptive attention is expanding awareness to receive experiences without avoidance or absorption².

❖ Receptive attention may be mediated by the dorsal network and the ventral network³. Concentrative attention may be mediated by the dorsal network³.

Fig 1. The dorsal and ventral frontoparietal networks³



METHODS

Experimental Design:

- ❖ Archival data
- ❖ 5 depressed patients, 6 healthy controls
- ❖ Kentucky Inventory of Mindfulness Skills⁴
- ❖ 3 conditions: incongruent, congruent, baseline
- ❖ Participants pressed a button to indicate when they detected a change in the central face, valence was neutral or negative

Selective Attention

CONCLUSION

- ❖ The results support an attentional conceptualization of mindfulness.
- ❖ The network hypothesis was partially supported.
- ❖ Receptive attention scores did correlate positively with the magnitude of activity in the dorsal and ventral networks in controls.
- ❖ Concentrative attention scores did not correlate with magnitude of activity in the dorsal and ventral networks in controls.

DISCUSSION

Receptive attention is the primary mindfulness skill. Mindfulness training should focus on teaching receptive attention skills. Future research should include mindfulness training to participants and see if it correlates with increased activity in attentional networks.

FMRI ACQUISITION

NATALIE PAUL
B.S. Psychology
2012 Graduate

Outsized Outcomes



2013: 6 Fulbrights 2 Goldwaters 1 Truman

68 Fulbrights since 2001

Distinctive Yet Integral in the SUS

- Academic rigor, deep engagement as measured by National Survey of Student Engagement
- Demonstrated mastery
- Highly valued public liberal arts option for Florida's top undergraduates



Strategy: Strengthen our position in recruitment of top students

Outperform our competitors in academic rigor, intellectual exploration, and customized student experience.

- Transform high achieving high school students into academic entrepreneurs.
- Negotiate semester contracts and develop tutorials
- Narrative evaluations focus on strengths and weaknesses, not a simple grade
- Every student completes a senior project, and recruits a committee of 3 faculty for their oral baccalaureate exam.



Strategy: Cultivate an entrepreneurial spirit throughout the College

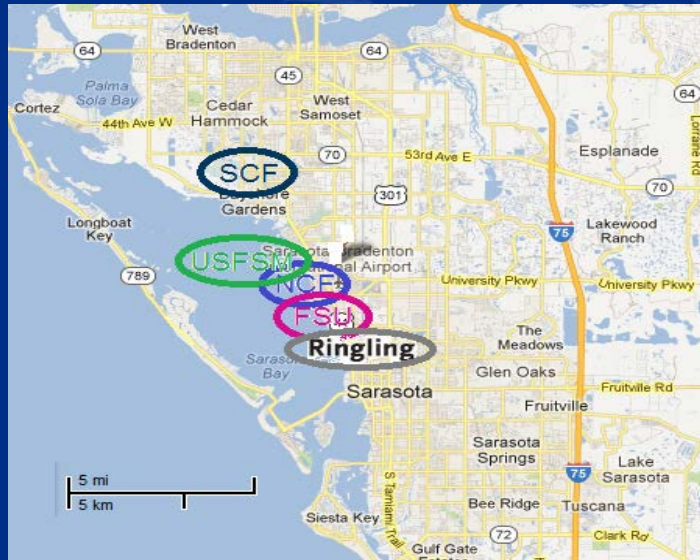
- Gain real mastery and prepare for graduate studies and professions
- Entrepreneurial academics require integration of student support into an effective whole
- Faculty innovate in pedagogy and research that connects with region

Strengths



- Clarity of mission
- World-class academic program
- Faculty committed to teaching
- 100% undergraduate research participation
- National partnerships for liberal arts

Opportunities



- Incremental growth without loss of quality
- Leverage community and region
- Add master programs in selected areas
- Partner with other area institutions

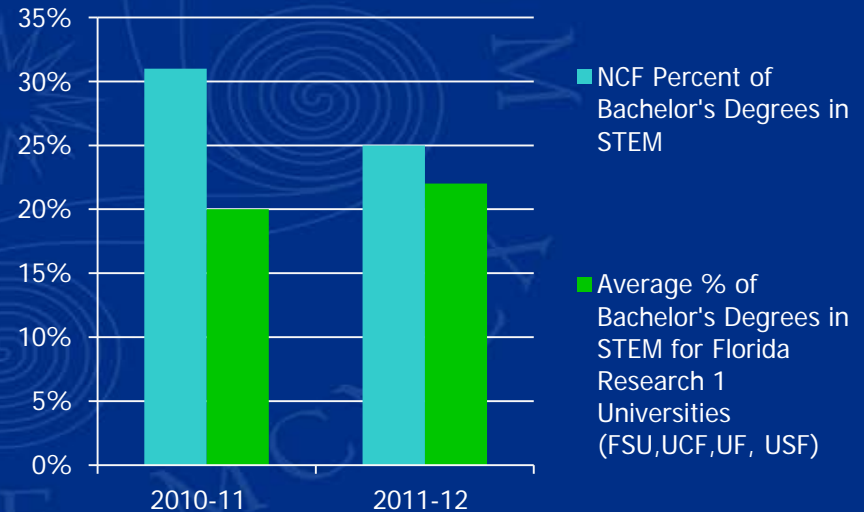
Three Key Initiatives

1. Strengthen student preparation for senior research and creative work through improved teaching and advising (*Academic Quality*)
2. Increase 1st year retention and 6-year graduation rates (*Improve Efficiency*)
3. Launch data science and analytics initiative and increase % of students in STEM fields (*Return on Investment*)

Key Performance Indicators

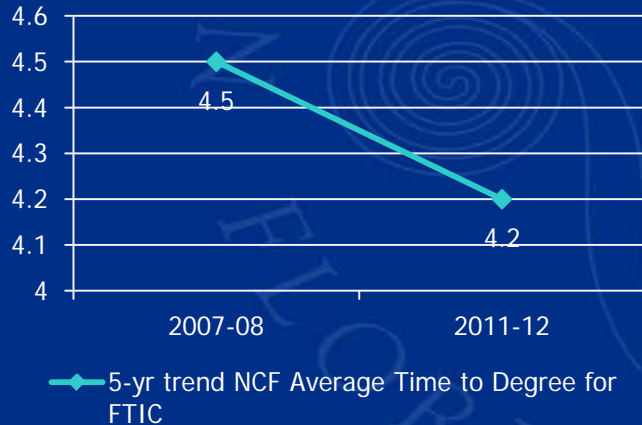
Percent of Bachelor's Degrees in STEM

- Second highest % in the SUS in 2011-12
- Higher than the average % at Florida Research 1 Universities

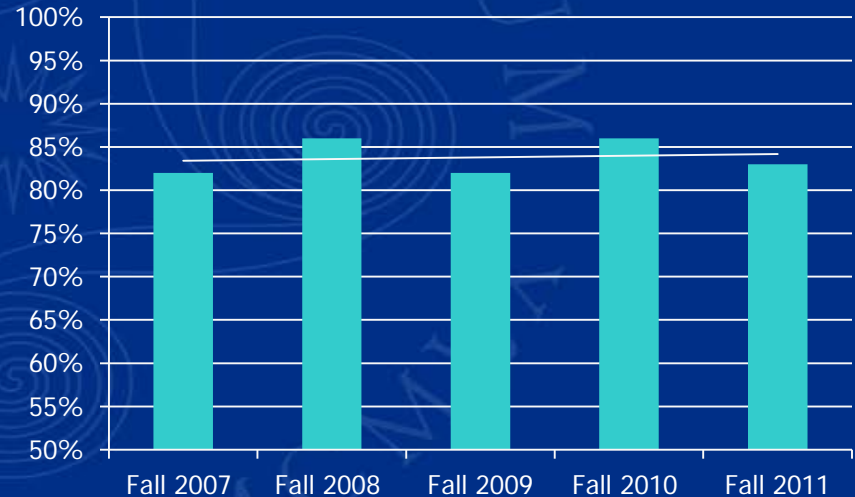


Key Performance Indicators

**5-yr trend NCF
Average Time to
Degree for FTIC**

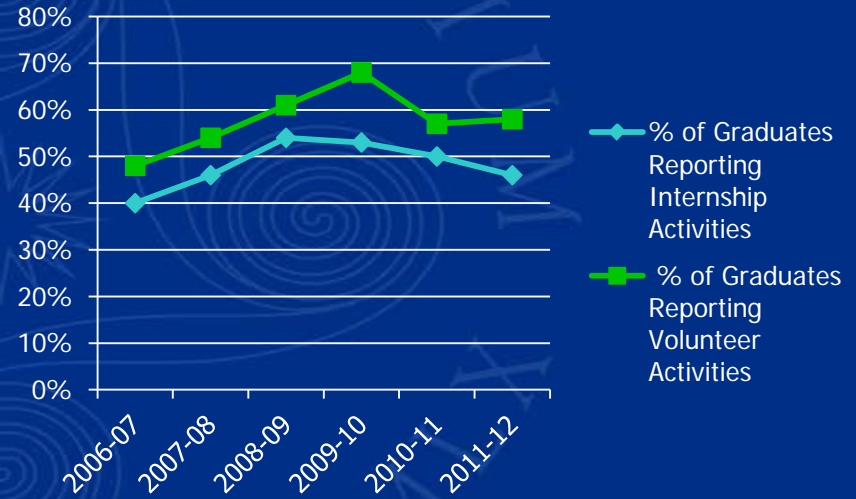


FTIC Retention Rate



Internships, Community and Business Engagement

- 46% students complete internships
- 58% volunteer
- Emerging priority in planning discussions with Trustees



Capital Improvement Fee for 2013-14

- Documented capital renewal and deferred maintenance needs in excess of \$3 million
- Students and Student Fee Committee voted to recommend \$2/CH fee increase, \$6.14 → \$8.14



Capital Improvement Fee for 2013-14

- \$125,697 cash or \$602,147 cash + bond will address capital renewal and deferred maintenance priorities



Tuition for 2013-14

- NCF will comply with 1.7% tuition increase required by statute. This will generate \$50,000
- New tuition revenue will support enhanced internship program
- NCF 2012-13 Florida resident tuition & fees are lowest in the SUS (main campuses)
- NCF graduates have low average debt compared to the SUS average

In Conclusion:

Themes for 2013-14 Work Plan

- Doing even better what we already do well
- Contributing to the Florida SUS in new ways
- Recalibrating mission: linking education to work