

BOARD of GOVERNORS State University System of Florida

Accountability Framework

Budget & Finance Committee
January 17, 2013

www.flbog.edu



Building a Better System

2010 - Regulations updated to align with the Governance Agreement

- Provided greater flexibilities to universities over certain fees
- Further clarified roles and responsibilities of Board of Governors and Boards of Trustees

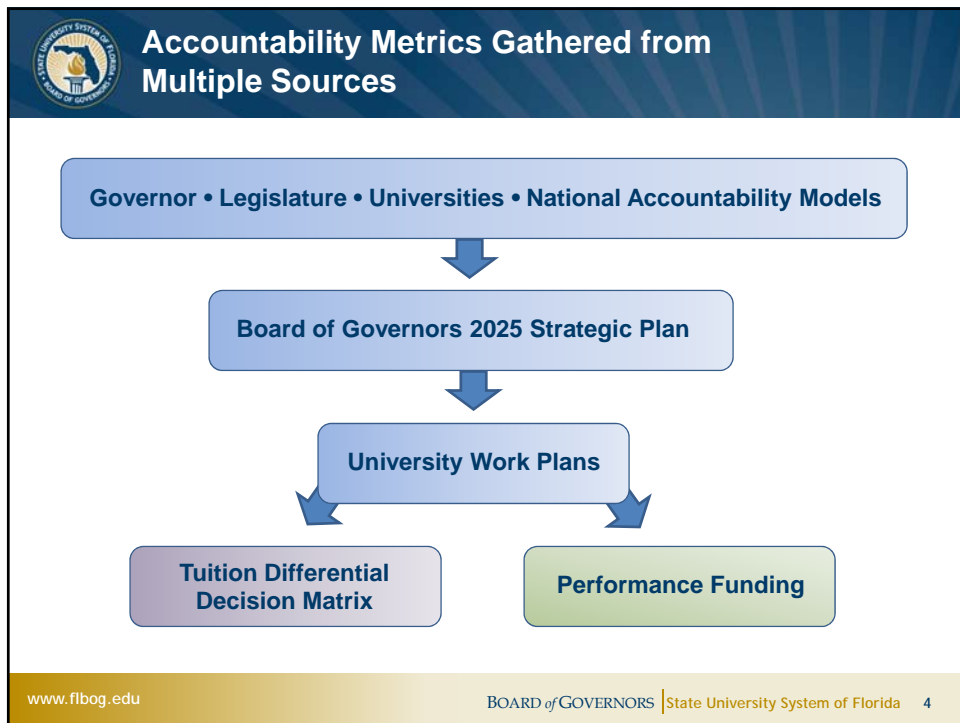
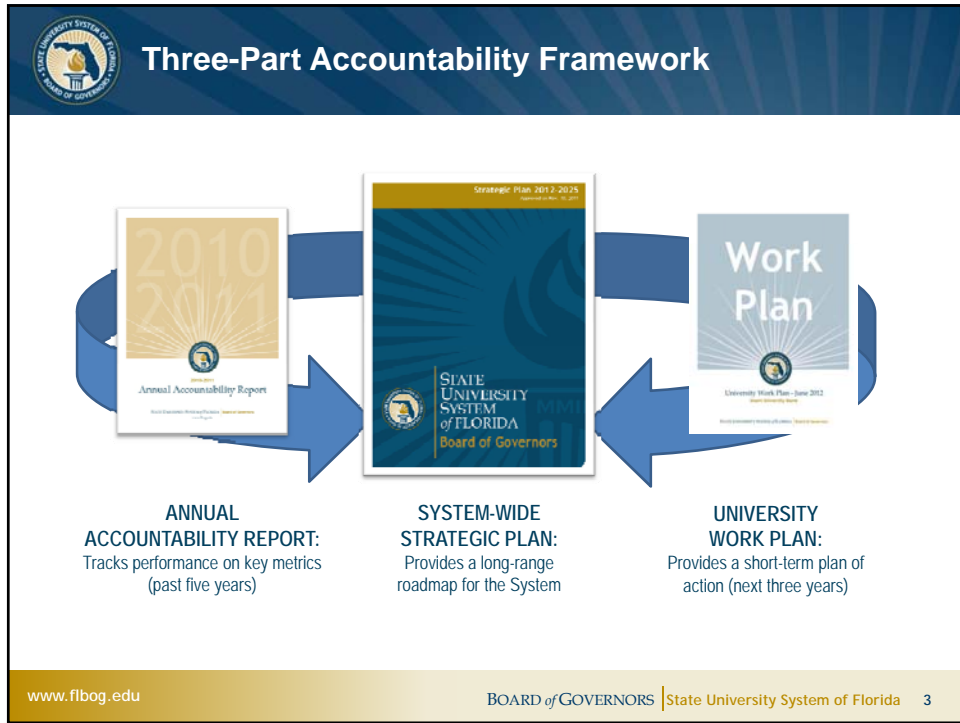
2011 - Regulations updated to align with new legislative authority


- Provided greater flexibilities to universities over market-rate and block tuition options

2012 - Regulations updated to enhance accountability and system collaboration

- Provided greater clarity regarding the opening and closing of campuses
- Created "rules of the road" when universities propose programs in other geographic areas
- Established processes for new degree program vetting to reduce unnecessary duplication and ensure the System is meeting the State's needs

www.flbog.edu BOARD of GOVERNORS | State University System of Florida 2





Tuition Differential Metrics

Metrics used to evaluate both Excellence and Improvement will guide the Board's decision on potential tuition differential increases:

STANDARD METRICS:

- Retention Rates
- Graduation Rates
- Post-Graduation Success (Employment, Average Salary, Continued Education)
- Excess Hours
- Bachelor's Degrees in Areas of Strategic Emphasis
- Access Rate (Financial Aid)


+

MISSION-DRIVEN METRICS:

- 1 Institution-Specific Metric (Board Choice)
- 1 Institution-Specific Metric (University Choice)
- Performance on All Other Metrics
- Budget & Finance Committee Discretion

As of November 8, 2012

www.flbog.edu
BOARD of GOVERNORS | State University System of Florida
5



Performance Funding

Metrics used to evaluate both Excellence and Improvement are tied to the goals outlined in each university work plan:

STANDARD METRICS:

- Retention Rates
- Graduation Rates
- Post-Graduation Success (Employment, Average Salary, Continued Education)
- Excess Hours
- Bachelor's Degrees in Areas of Strategic Emphasis
- Master's Degrees in Areas of Strategic Emphasis
- Access Rate (Financial Aid)


+

MISSION-DRIVEN METRICS:

- 2 Institution-Specific Metric (Board Choice)
- 2 Institution-Specific Metric (University Choice)
- Research Expenditures
- Doctoral Degrees in STEM
- Budget & Finance Committee Discretion (e.g. Affordability, ROI)

As of November 8, 2012


www.flbog.edu
BOARD of GOVERNORS | State University System of Florida
6


Draft Performance Funding Model (revised January 11, 2013)

DRAFT

Points	EXCELLENCE <i>(Achieving System Goals)</i>			IMPROVEMENT <i>(Recognizing Annual Improvement)</i>		
	3	2	1	3	2	1
Key Metrics Common to All Universities Plus 2 Institution Specific Metrics						
1 Percent of Bachelor's Graduates Employed and/or Continuing their Education Further	90%	80%	70%	3%	2%	1%
2 Cost per Undergraduate Degree <i>(calculation TBD)</i>	TBD	TBD	TBD	TBD	TBD	TBD
3 Average Wages of Employed Undergraduates <i>(source of information TBD)</i>	TBD	TBD	TBD	TBD	TBD	TBD
4 Six Year Graduation Rate <i>Full-time and Part-time FTIC</i>	70%	65%	60%	3%	2%	1%
5 Academic Progress Rate <i>2nd Year Retention with GPA Above 2.0</i>	90%	85%	80%	3%	2%	1%
6 Bachelor's Degrees Awarded in Areas of Strategic Emphasis <i>(includes STEM)</i>	50%	40%	30%	3%	2%	1%
7 University Access Rate <i>Percent of UG with Pell & Percent of Pell Students Whose Gift Aid Exceeds Tuition & Fees</i>	75%	70%	65%	3%	2%	1%
8 Master's Degrees Awarded in Areas of Strategic Emphasis <i>(includes STEM)</i>	50%	40%	30%	3%	2%	1%
Institution-Specific Metrics						
9 Board of Governors choice	TBD	TBD	TBD	TBD	TBD	TBD
10 UBOTs choice	TBD	TBD	TBD	TBD	TBD	TBD

www.flbog.edu
BOARD of GOVERNORS | State University System of Florida
7


Next Steps

- **Predictable fund source (New funds or % of base)**
- **Weights (Should some metrics be a higher priority)**
- **Metric sources and calculations**
- **Rubric (What level of success determines Excellence or Improvement. Should Improvement be based on 1 year change or an average of 3 years.)**
- **Implementation period**
- **Board discretionary option**

www.flbog.edu
BOARD of GOVERNORS | State University System of Florida
8