

# ONE FACULTY MEMBER'S PERSPECTIVE ON UNIVERSITY CLASSROOM UTILIZATION

Dr. Charles E. Frazier  
Vice Provost and Senior Associate Vice President &  
Professor of Criminology

# Keeping Up With Discipline Requirements

- The greater the number of degrees and programs, the greater the challenges
- Accreditation associations and professional associations specifications – e.g., class size, hands-on materials, labs, skills, etc.
- Pedagogies – e.g., fixed versus movable desks/chairs, special equipment, proximities to samples, etc.





# Keeping Up With Large Enrollment

- Large lectures/discussion model.
  - Large lectures are necessary for very large enrollment.
  - Break-out discussion sessions are necessary to provide quality education.
  - This model takes lots of rooms and complicates pattern efficiencies.





# Keeping Up With Changes In Student Interests and Needs

- Popularity of majors and demand for courses change faster than classroom inventory – e.g. social sciences over last ten years, and need for some core sciences (e.g., chemistry way up)





## Keeping Up With Compatibility Issues

- Some rooms are in places that make them incompatible with some uses (e.g. chemical smells don't bother science majors but are hard for arts and humanities majors and College of Law is relatively isolated from rest of University campus.)



# Keeping Up With Schedule/Time and Distance Issues

- Students with 4 or 5 courses, some of which also have labs has to not only get the classes in a non-conflicting schedule, but they must be able to walk or ride their bicycles between one class and another in the designated time between classes.
- If they have labs in the afternoon, they have to get most of their classes in the morning. Departments have to juggle these things constantly.

# Keeping Up With Technology Needs

- Not all classrooms are full multimedia
- There is more demand than facilities can accommodate. Thus, transport of video and computing equipment is sometimes necessary. While we have equipment stored and managed in zones, it still sometimes requires going outside and contending with weather and elements.
- Faculty tend to think they should not have to depend on weather or location to get the equipment they need. So they demand rooms with multimedia or inside building transport.





# Keeping Up With Renovation and Major Maintenance Requirements


- During the OPPAGA period of analysis, UF had 22 rooms out of service .
- Some rooms must wait a long time before we can afford to take them out of service. The older the room, the harder it is to schedule.



The left side of the slide features a vertical stack of four images. From top to bottom: a blue clock with black hands on a blue background; a red clock with black hands on a red background; a green book with white pages on a green background; and a blue book with white pages on a blue background.

# Keeping Up With Multiple Demands on Students and Faculty

- “If you schedule it,” it doesn’t mean “...they will come”.
- Students work (7000 on campus, others work off-campus)
- Student Government participation on residential campuses is time intensive
- Approximately 800 student clubs
- Volunteer hours (students contribute hundreds of thousands of hours per year)



# Keeping Up With Multiple Demands on Students and Faculty

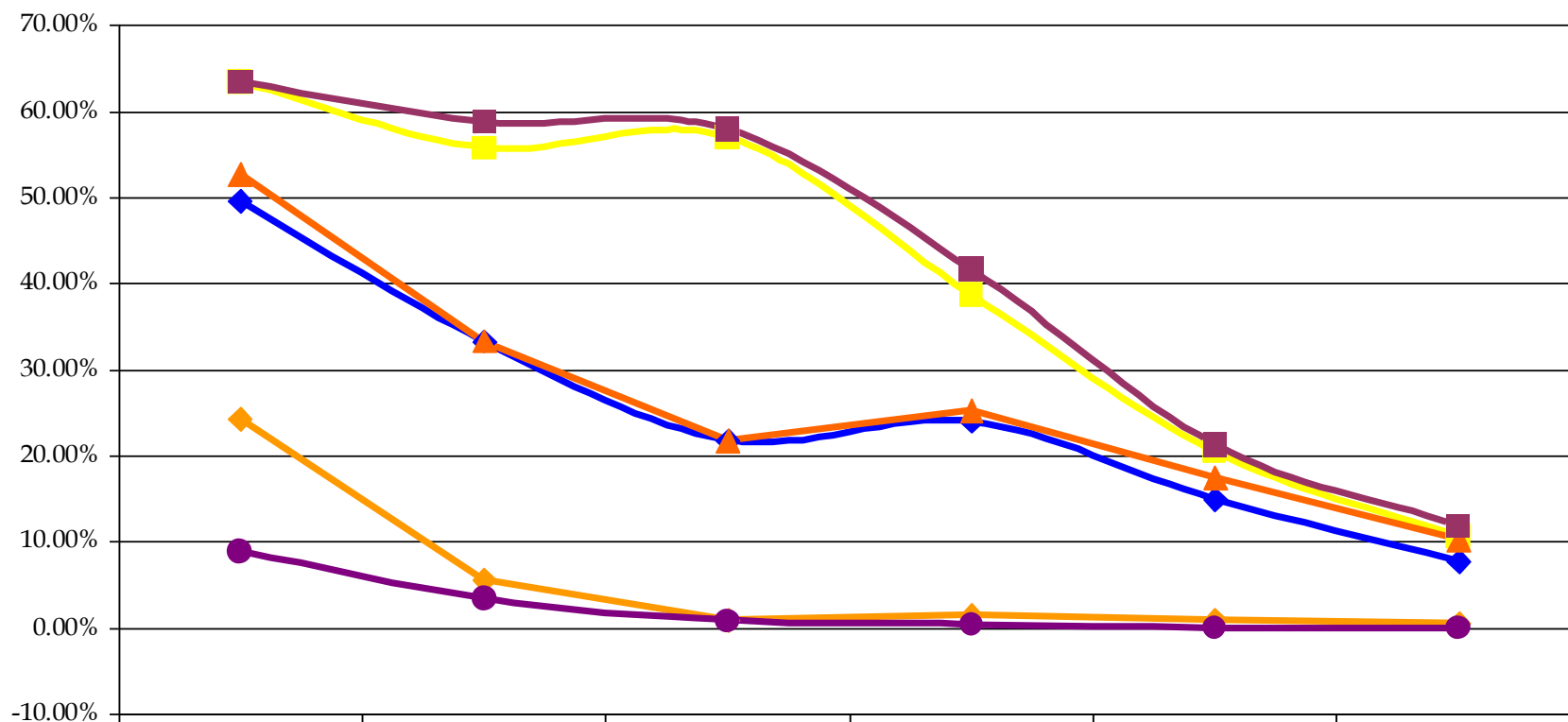
- Internship and practicum experiences require blocks of time – often afternoons
- Faculty time with graduate students is fundamental to graduate education (non-class hours with Ph.D. and MA students is large and faculty members need blocks of time for quality work)
- Graduate students who teach must also attend their own classes, study for those classes and do their own research.
- Graduate classes tend to be in the afternoons and evenings. Many are not regularly scheduled and therefore not shown as using space.



# Space Utilization Based on Mission

UF and FSU BOTH HAVE  
STATEWIDE SERVICE AREAS,  
GRADUATE RESEARCH  
MISSIONS, AND ARE NOT IN  
LARGE POPULATION CENTERS

## UF v. FSU Late Afternoon



	4:00 PM	5:00 PM	6:00 PM	7:00 PM	8:00 PM	9:00 PM
UF MON	49.53%	33.33%	21.81%	23.99%	14.95%	7.79%
FSU MON	63.40%	55.74%	57.02%	38.72%	20.43%	10.64%
UF WED	52.65%	33.33%	21.81%	25.23%	17.45%	10.28%
FSU WED	63.40%	58.72%	57.87%	41.70%	21.28%	11.91%
UF FRI	24.30%	5.61%	0.93%	1.56%	0.93%	0.62%
FSU FRI	8.94%	3.40%	0.85%	0.43%	0.00%	0.00%



# IF MISSIONS ARE SIMILAR, WHY ARE UTILIZATIONS DIFFERENT?

## ■ Some Suggestions

- FSU has a large influx of State employees taking courses after work to take advantage of a free State benefit. FSU has petitioned Legislature for funds to teach these students for many years. Gainesville has no large concentration of State employees.
- UF is largest employer in Gainesville. Next largest is Publix. No large source of after work students.





# USAGE CONCLUSIONS

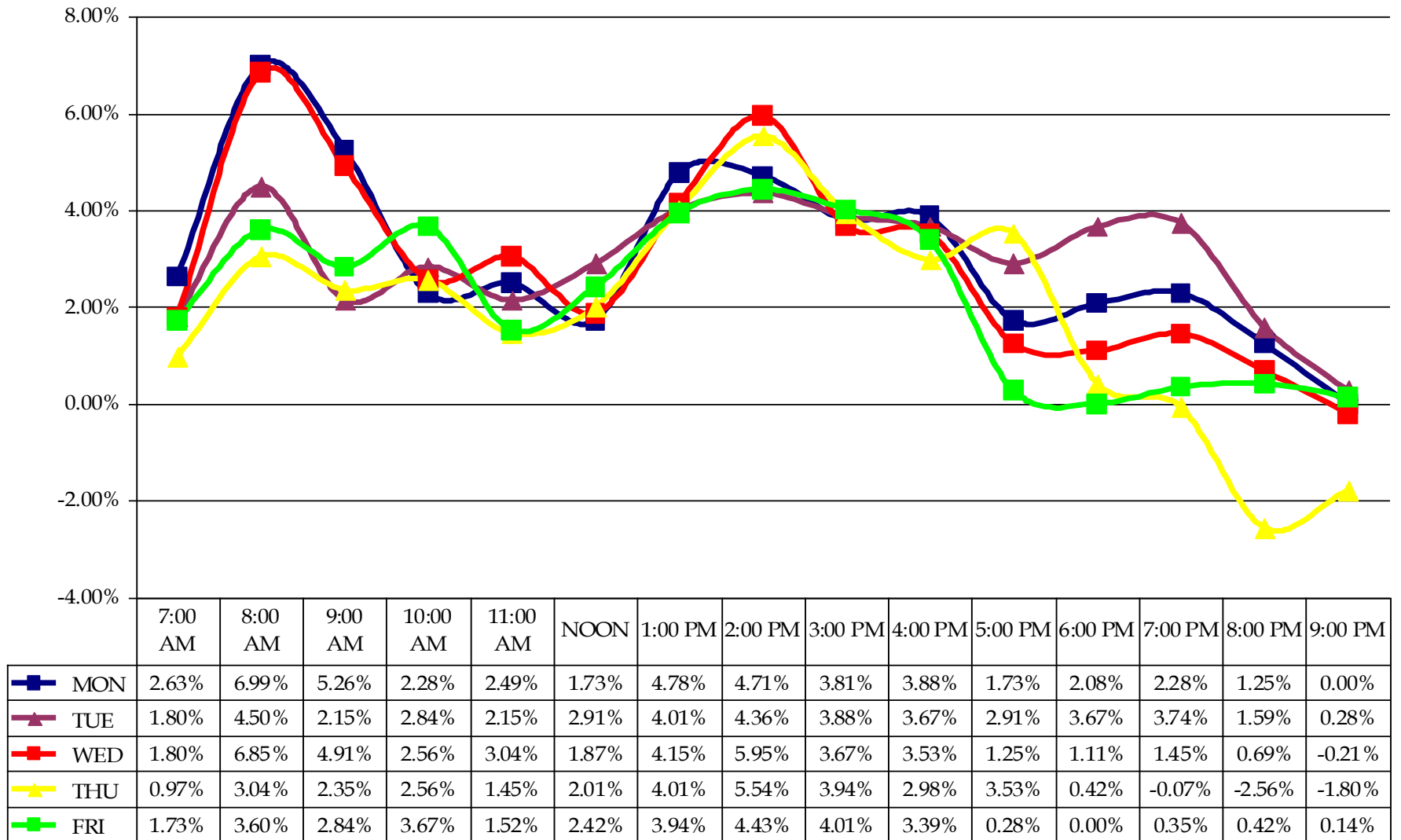
- EACH UNIVERSITY'S UTILIZATION STATISTICS HAS TO BE REVIEWED IN RELATION TO IT'S
  - MISSION
  - POPULATION SERVED
  - SERVICE AREA OF POPULATION
- CONCLUSIONS SHOULD NOT BE DRAWN FROM SUS DATA



# OPPAGA DATA

- OPPAGA Used Spring Semester 2001 Data
- Fall Percentages 2-5% Higher
  - Fall has highest admission class
  - Number of graduates for fall > number of admits for spring.

# SUS DIFFERENCE BETWEEN FALL 2003 and SPRING 2004



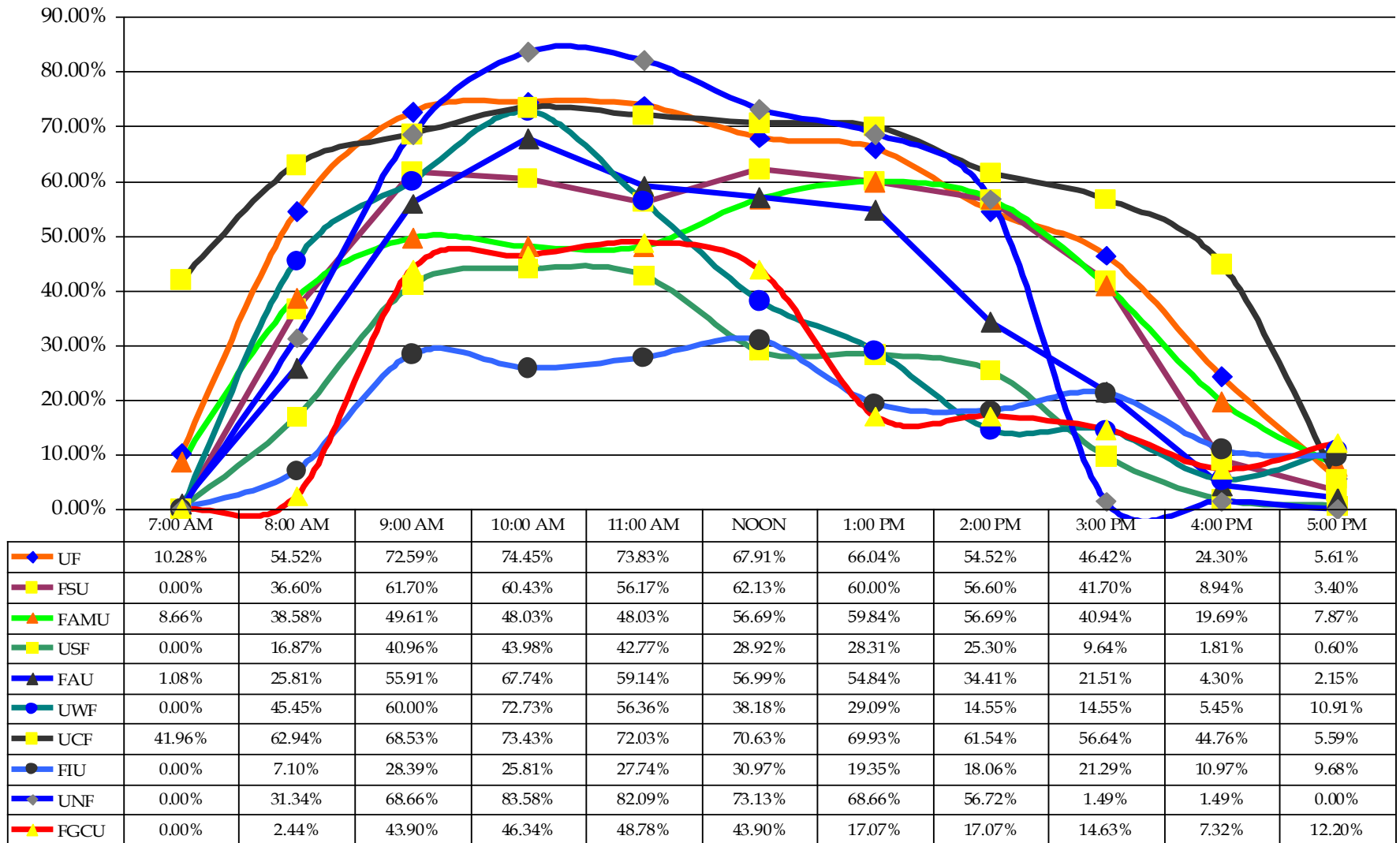


# THE FRIDAY ISSUE

- 5 universities are above 50% at 2PM
- 4 universities are above 50% at 3 PM
- 6 universities are above 50% between 9 AM and 1PM
- At least 4 universities are at greater than 60% between 9 AM and NOON.
- Not many individuals work past 5 on Fridays or want classes?



## FRIDAY UTILIZATION FALL 2003



# QUESTIONS AND HOPEFULLY ANSWERS

Dr. Chuck Frazier  
233 Tigert Hall  
PO Box 113075  
Gainesville FL 32611-3075

Email me at: [cfrazier@aa.ufl.edu](mailto:cfrazier@aa.ufl.edu)  
Call me at 352-392-1301  
Suncom 622-1301

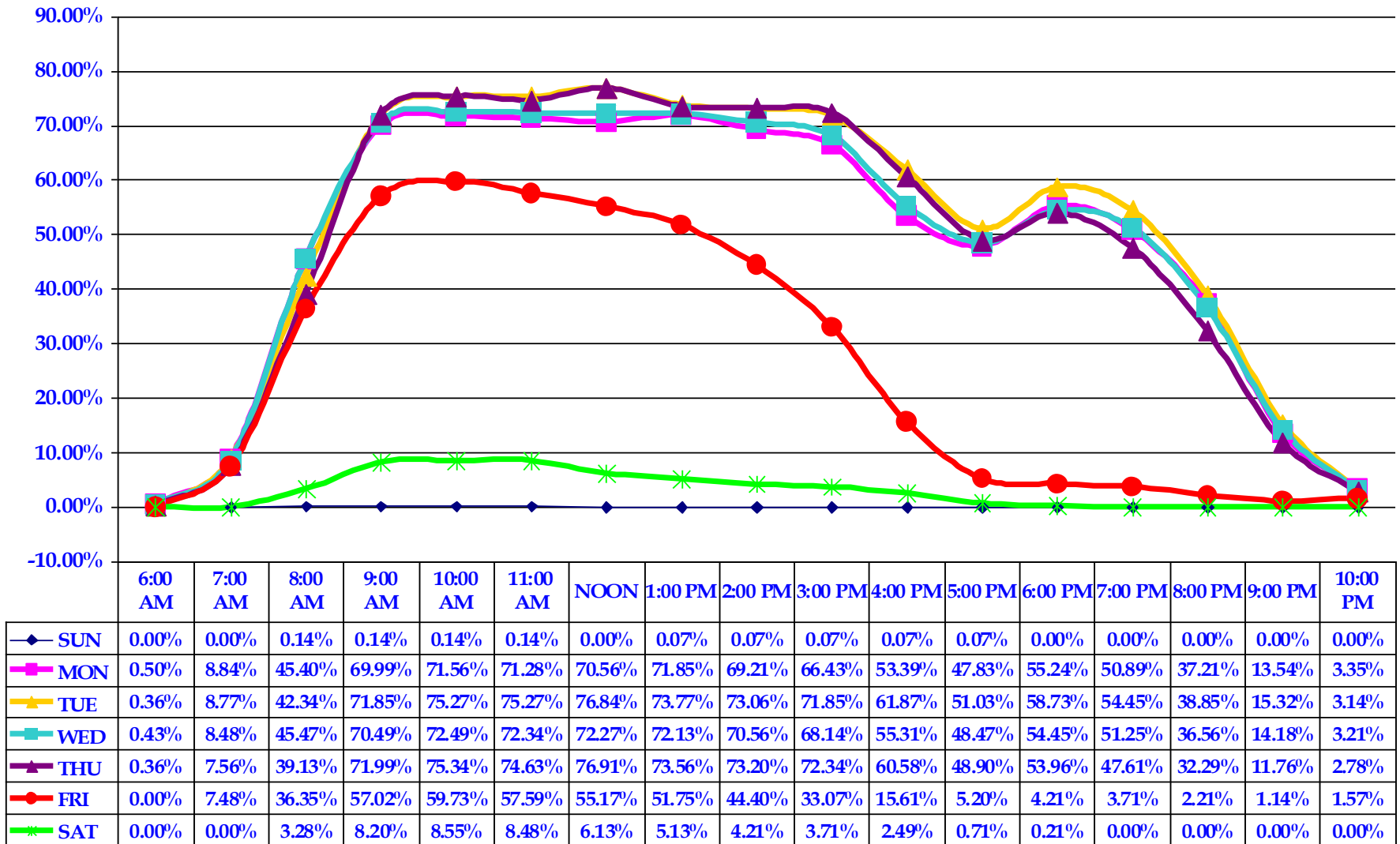


# UNIVERSITY FALL SEMESTER CLASSROOM UTILIZATION CHARTS

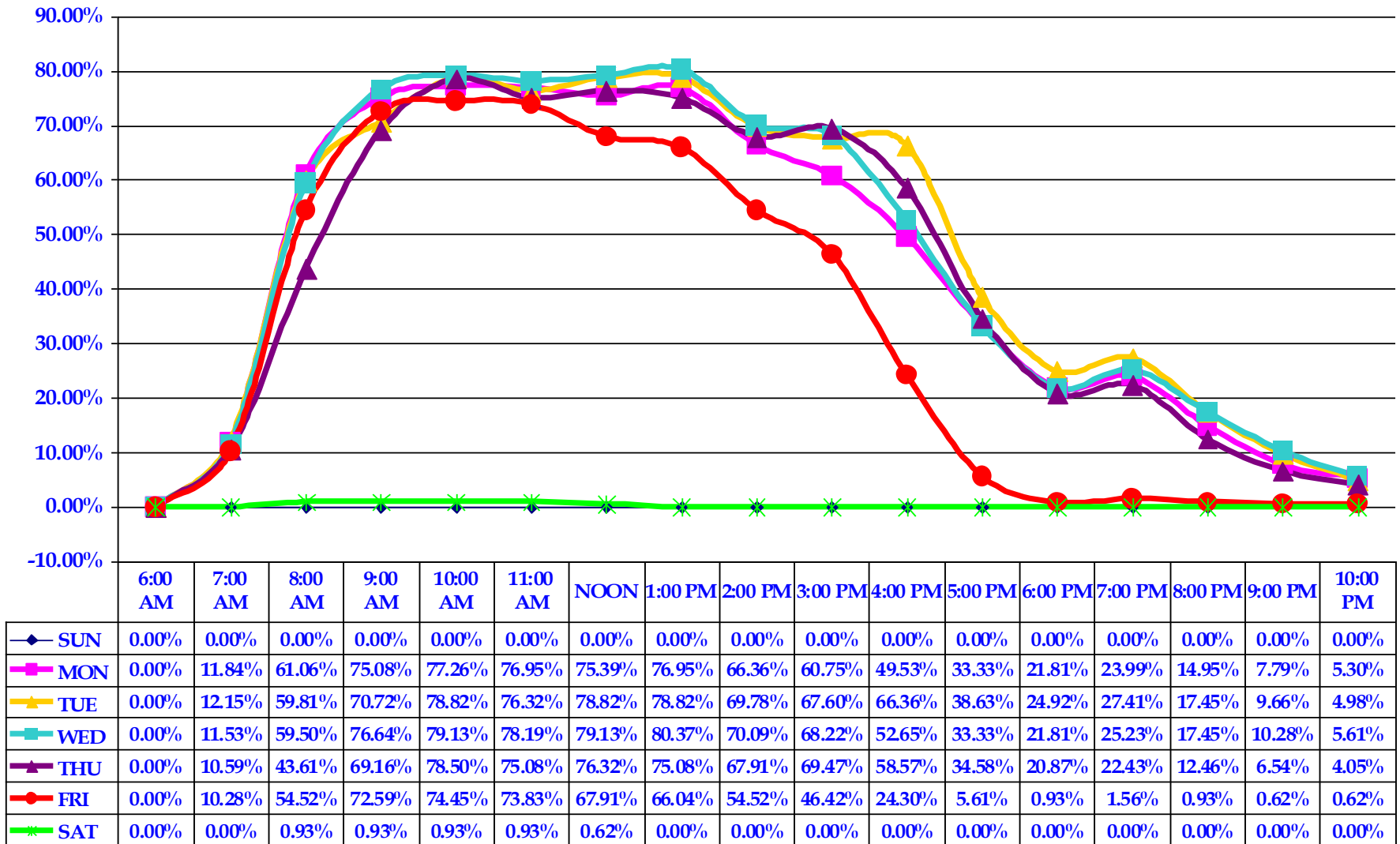




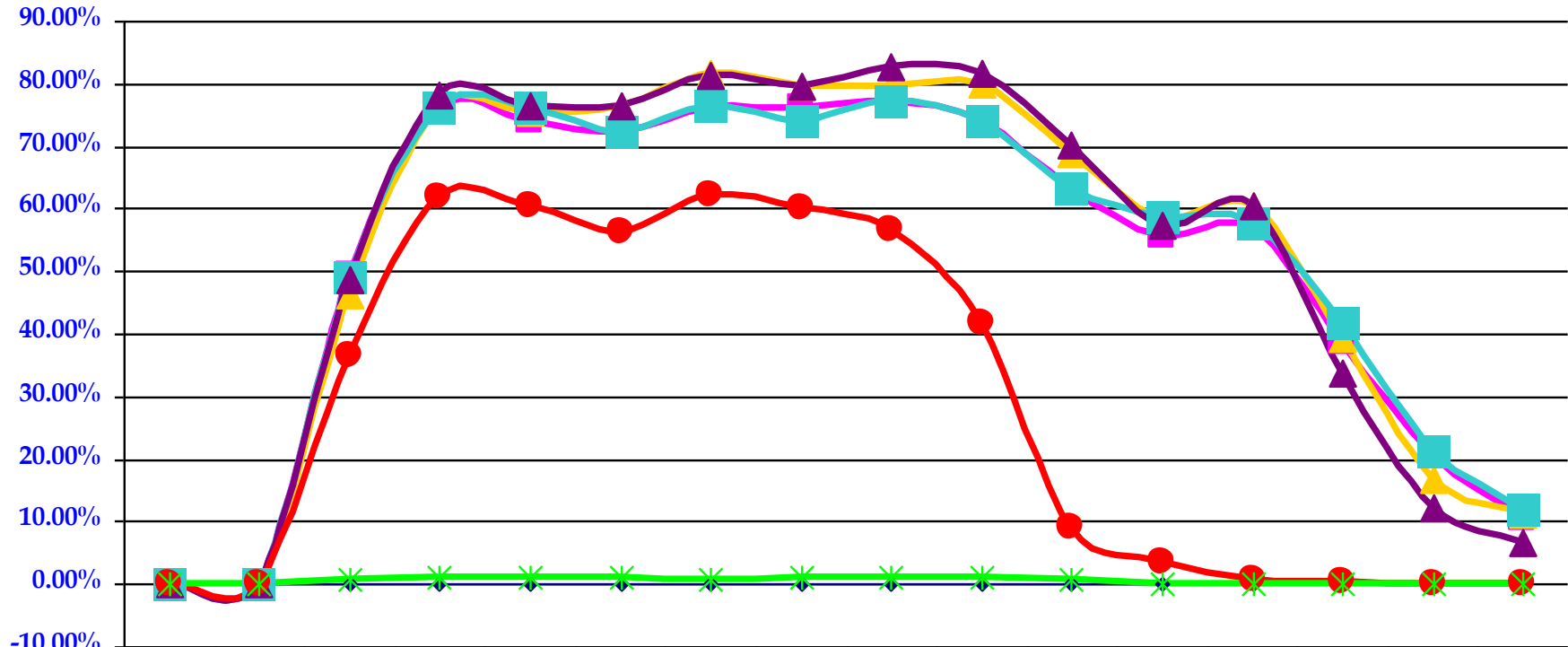
## SUS CLASSROOM UTILIZATION FALL SEMESTER 2003



## UF CLASSROOM UTILIZATION FALL SEMESTER 2003

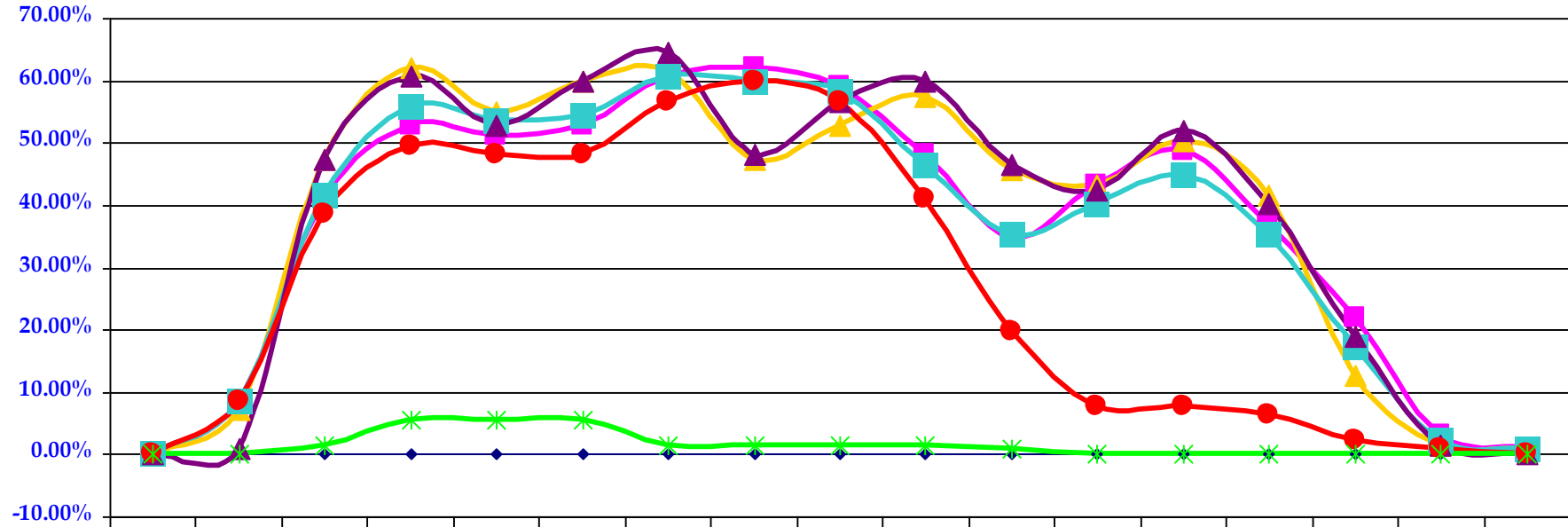


# FSU CLASSROOM UTILIZATION FALL SEMESTER 2003



	6:00 AM	7:00 AM	8:00 AM	9:00 AM	10:00 AM	11:00 AM	NOON	1:00 PM	2:00 PM	3:00 PM	4:00 PM	5:00 PM	6:00 PM	7:00 PM	8:00 PM	9:00 PM
FSU SUN	0.00%	0.00%	0.00%	0.00%	0.00%	0.00%	0.00%	0.00%	0.00%	0.00%	0.00%	0.00%	0.00%	0.00%	0.00%	0.00%
FSU MON	0.00%	0.00%	49.36%	76.17%	74.04%	72.34%	76.17%	76.17%	77.02%	74.04%	63.40%	55.74%	57.02%	38.72%	20.43%	10.64%
FSU TUE	0.00%	0.00%	46.38%	76.17%	75.32%	76.60%	81.70%	79.57%	79.57%	80.00%	68.94%	58.30%	60.43%	39.15%	16.60%	11.06%
FSU WED	0.00%	0.00%	48.94%	76.17%	76.17%	72.34%	76.60%	74.04%	77.02%	74.04%	63.40%	58.72%	57.87%	41.70%	21.28%	11.91%
FSU THU	0.00%	0.00%	48.51%	78.30%	76.60%	76.60%	81.28%	79.57%	82.55%	81.70%	70.21%	57.45%	60.43%	33.62%	12.34%	6.81%
FSU FRI	0.00%	0.00%	36.60%	61.70%	60.43%	56.17%	62.13%	60.00%	56.60%	41.70%	8.94%	3.40%	0.85%	0.43%	0.00%	0.00%
FSU SAT	0.00%	0.00%	0.85%	1.28%	1.28%	1.28%	0.85%	1.28%	1.28%	1.28%	0.85%	0.00%	0.00%	0.00%	0.00%	0.00%

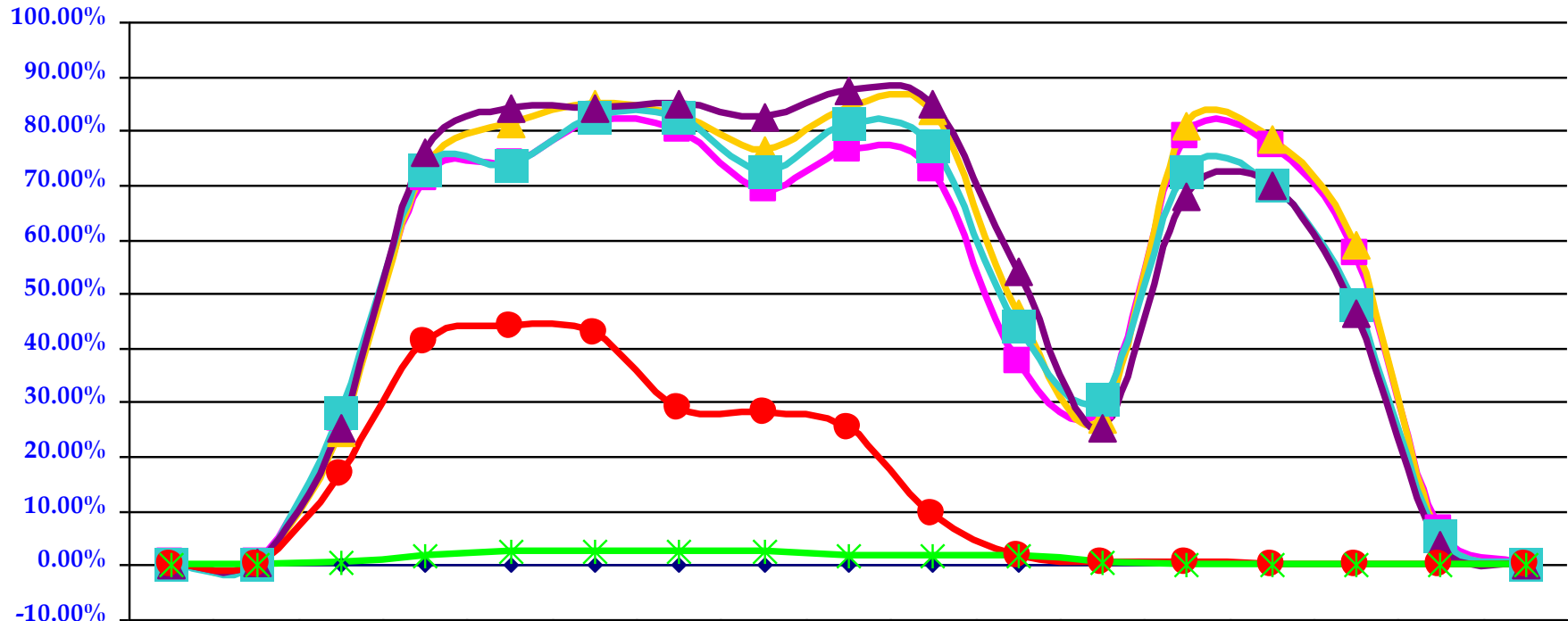
## FAMU CLASSROOM UTILIZATION FALL SEMESTER 2003



	6:00 AM	7:00 AM	8:00 AM	9:00 AM	10:00 AM	11:00 AM	NOON	1:00 PM	2:00 PM	3:00 PM	4:00 PM	5:00 PM	6:00 PM	7:00 PM	8:00 PM	9:00 PM	10:00 PM
—◆— FAMU SUN	0.00%	0.00%	0.00%	0.00%	0.00%	0.00%	0.00%	0.00%	0.00%	0.00%	0.00%	0.00%	0.00%	0.00%	0.00%	0.00%	0.00%
—■— FAMU MON	0.00%	8.66%	40.94%	52.76%	51.18%	52.76%	60.63%	62.20%	59.06%	48.03%	34.65%	43.31%	48.82%	37.01%	22.05%	3.15%	0.79%
—▲— FAMU TUE	0.00%	7.09%	47.24%	62.20%	55.12%	59.84%	61.42%	47.24%	52.76%	57.48%	45.67%	43.31%	50.39%	41.73%	12.60%	1.57%	0.79%
—■— FAMU WED	0.00%	8.66%	41.73%	55.91%	53.54%	54.33%	60.63%	59.84%	58.27%	46.46%	35.43%	40.16%	44.88%	35.43%	17.32%	2.36%	0.79%
—▲— FAMU THU	0.00%	0.79%	47.24%	60.63%	52.76%	59.84%	64.57%	48.03%	56.69%	59.84%	46.46%	42.52%	51.97%	40.16%	18.90%	1.57%	0.00%
—●— FAMU FRI	0.00%	8.66%	38.58%	49.61%	48.03%	48.03%	56.69%	59.84%	56.69%	40.94%	19.69%	7.87%	7.87%	6.30%	2.36%	0.79%	0.00%
—*— FAMU SAT	0.00%	0.00%	1.57%	5.51%	5.51%	5.51%	1.57%	1.57%	1.57%	1.57%	0.79%	0.00%	0.00%	0.00%	0.00%	0.00%	0.00%

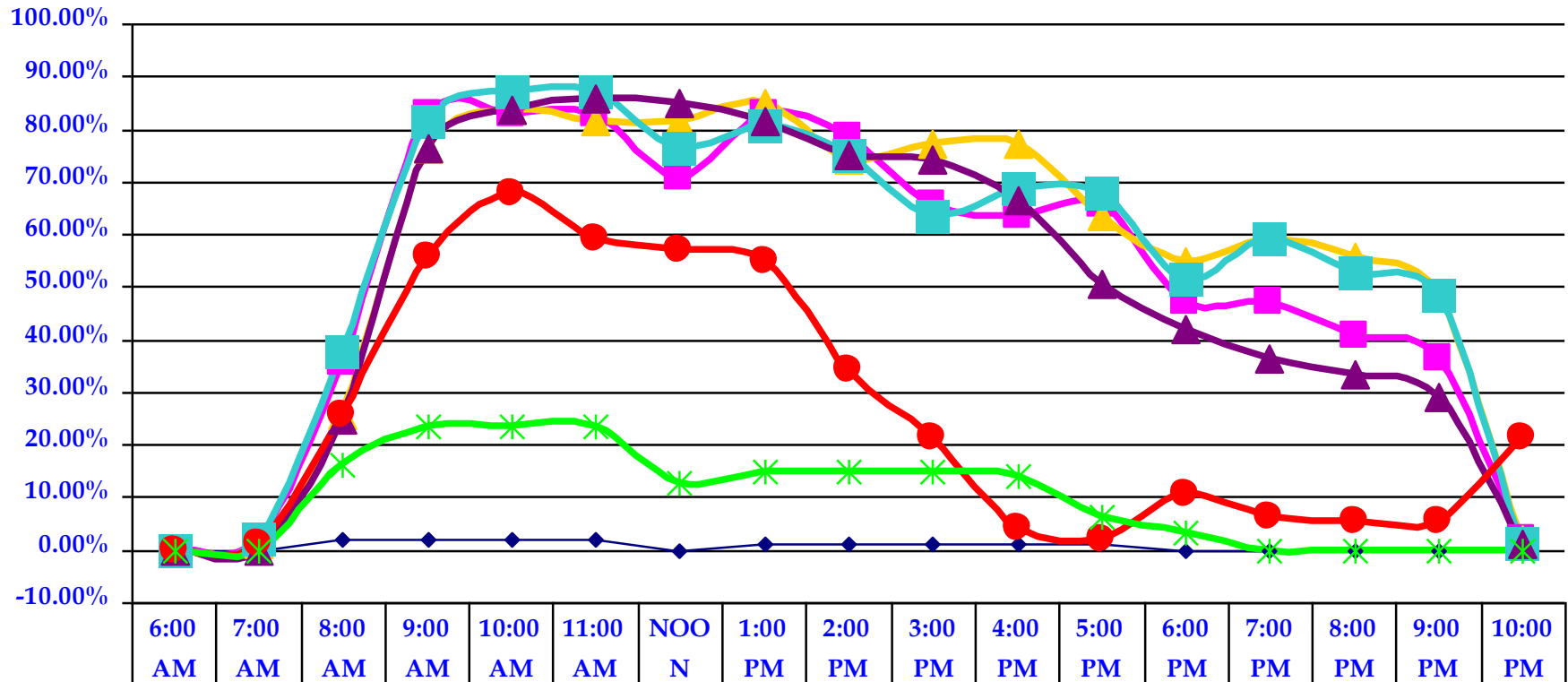


# USF CLASSROOM UTILIZATION FALL SEMESTER 2003



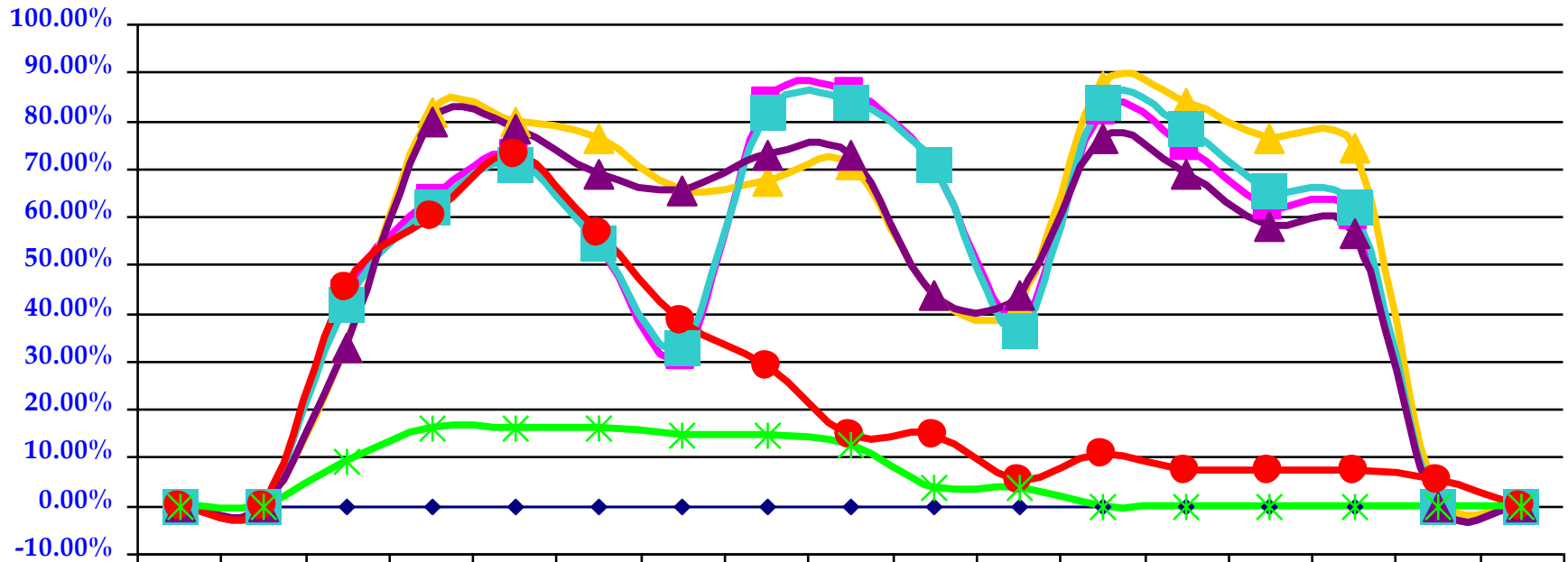
	6:00 AM	7:00 AM	8:00 AM	9:00 AM	10:00 AM	11:00 AM	NOO N	1:00 PM	2:00 PM	3:00 PM	4:00 PM	5:00 PM	6:00 PM	7:00 PM	8:00 PM	9:00 PM	10:00 PM
—◆— USF SUN	0.00%	0.00%	0.00%	0.00%	0.00%	0.00%	0.00%	0.00%	0.00%	0.00%	0.00%	0.00%	0.00%	0.00%	0.00%	0.00%	0.00%
—■— USF MON	0.60%	0.60%	27.11%	71.08%	74.10%	81.93%	80.12%	69.28%	76.51%	72.89%	37.35%	28.92%	78.92%	77.11%	57.23%	6.63%	0.00%
—▲— USF TUE	0.00%	0.00%	24.70%	72.89%	81.33%	84.94%	83.13%	76.51%	84.34%	83.73%	46.39%	27.11%	80.72%	78.31%	59.04%	5.42%	0.00%
—■— USF WED	0.00%	0.00%	28.31%	72.89%	73.49%	82.53%	82.53%	72.29%	81.33%	77.11%	43.98%	30.72%	72.29%	69.88%	48.19%	5.42%	0.00%
—▲— USF THU	0.00%	0.60%	25.30%	75.90%	84.34%	84.34%	84.94%	82.53%	87.35%	84.94%	54.22%	25.30%	68.07%	69.88%	46.39%	3.61%	0.00%
—●— USF FRI	0.00%	0.00%	16.87%	40.96%	43.98%	42.77%	28.92%	28.31%	25.30%	9.64%	1.81%	0.60%	0.60%	0.00%	0.00%	0.00%	0.00%
—✱— USF SAT	0.00%	0.00%	0.60%	1.81%	2.41%	2.41%	2.41%	2.41%	1.81%	1.81%	1.81%	0.60%	0.00%	0.00%	0.00%	0.00%	0.00%

# FAU CLASSROOM UTILIZATION FALL SEMESTER 2003



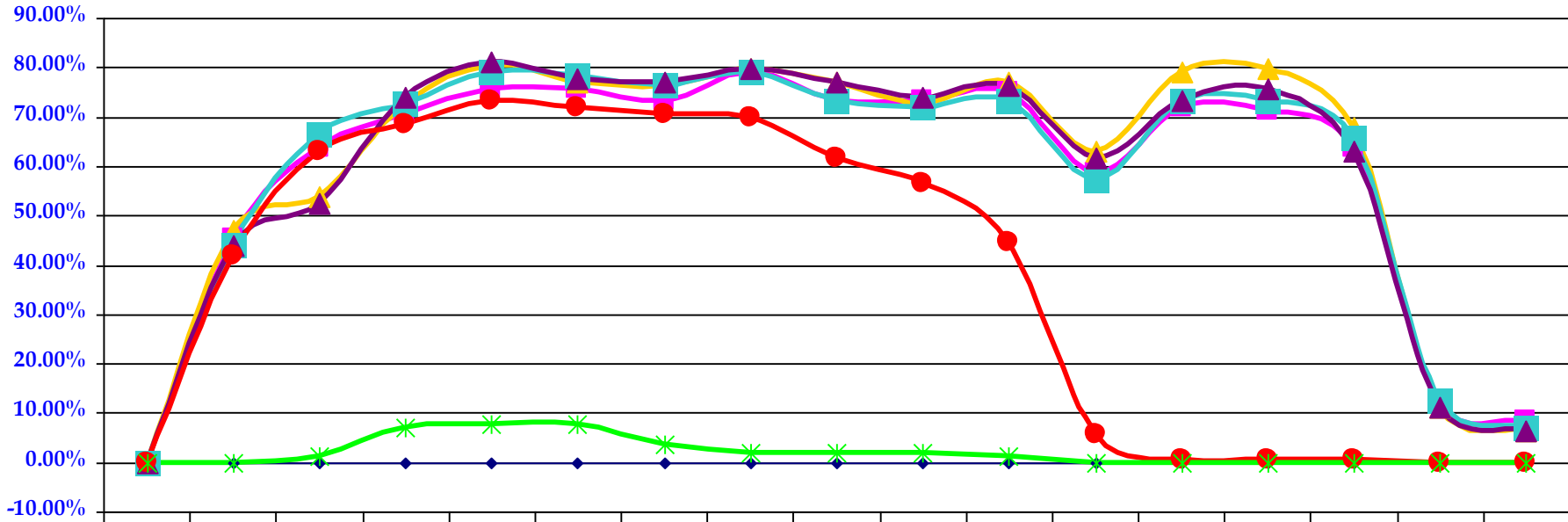
—◆— FAU SUN	0.00%	0.00%	2.15%	2.15%	2.15%	2.15%	0.00%	1.08%	1.08%	1.08%	1.08%	1.08%	0.00%	0.00%	0.00%	0.00%	0.00%
—■— FAU MON	0.00%	2.15%	35.48%	82.80%	82.80%	82.80%	70.97%	82.80%	78.49%	65.59%	63.44%	65.59%	47.31%	47.31%	40.86%	36.56%	2.15%
—▲— FAU TUE	0.00%	1.08%	25.81%	76.34%	83.87%	81.72%	81.72%	84.95%	74.19%	77.42%	77.42%	63.44%	54.84%	59.14%	55.91%	48.39%	2.15%
—■— FAU WED	0.00%	2.15%	37.63%	81.72%	87.10%	87.10%	76.34%	80.65%	75.27%	63.44%	68.82%	67.74%	51.61%	59.14%	52.69%	48.39%	1.08%
—▲— FAU THU	0.00%	0.00%	24.73%	76.34%	83.87%	86.02%	84.95%	81.72%	75.27%	74.19%	66.67%	50.54%	41.94%	36.56%	33.33%	29.03%	1.08%
—●— FAU FRI	0.00%	1.08%	25.81%	55.91%	67.74%	59.14%	56.99%	54.84%	34.41%	21.51%	4.30%	2.15%	10.75%	6.45%	5.38%	5.38%	21.51%
—✱— FAU SAT	0.00%	0.00%	16.13%	23.66%	23.66%	23.66%	12.90%	15.05%	15.05%	15.05%	13.98%	6.45%	3.23%	0.00%	0.00%	0.00%	0.00%

## UWF CLASSROOM UTILIZATION FALL SEMESTER 2003



	6:00 AM	7:00 AM	8:00 AM	9:00 AM	10:00 AM	11:00 AM	NOO N	1:00 PM	2:00 PM	3:00 PM	4:00 PM	5:00 PM	6:00 PM	7:00 PM	8:00 PM	9:00 PM	10:00 PM
—◆— UWF SUN	0.00%	0.00%	0.00%	0.00%	0.00%	0.00%	0.00%	0.00%	0.00%	0.00%	0.00%	0.00%	0.00%	0.00%	0.00%	0.00%	0.00%
—■— UWF MON	0.00%	0.00%	43.64	63.64	72.73	54.55	30.91	83.64	85.45	70.91	38.18	81.82	74.55	61.82	60.00	0.00%	0.00%
—▲— UWF TUE	0.00%	0.00%	32.73	81.82	80.00	76.36	65.45	67.27	70.91	43.64	41.82	87.27	83.64	76.36	74.55	1.82%	0.00%
—■— UWF WED	0.00%	0.00%	41.82	61.82	70.91	54.55	32.73	81.82	83.64	70.91	36.36	83.64	78.18	65.45	61.82	0.00%	0.00%
—▲— UWF THU	0.00%	0.00%	32.73	80.00	78.18	69.09	65.45	72.73	72.73	43.64	43.64	76.36	69.09	58.18	56.36	0.00%	0.00%
—●— UWF FRI	0.00%	0.00%	45.45	60.00	72.73	56.36	38.18	29.09	14.55	14.55	5.45%	10.91	7.27%	7.27%	7.27%	5.45%	0.00%
—*— UWF SAT	0.00%	0.00%	9.09%	16.36	16.36	16.36	14.55	14.55	12.73	3.64%	3.64%	0.00%	0.00%	0.00%	0.00%	0.00%	0.00%

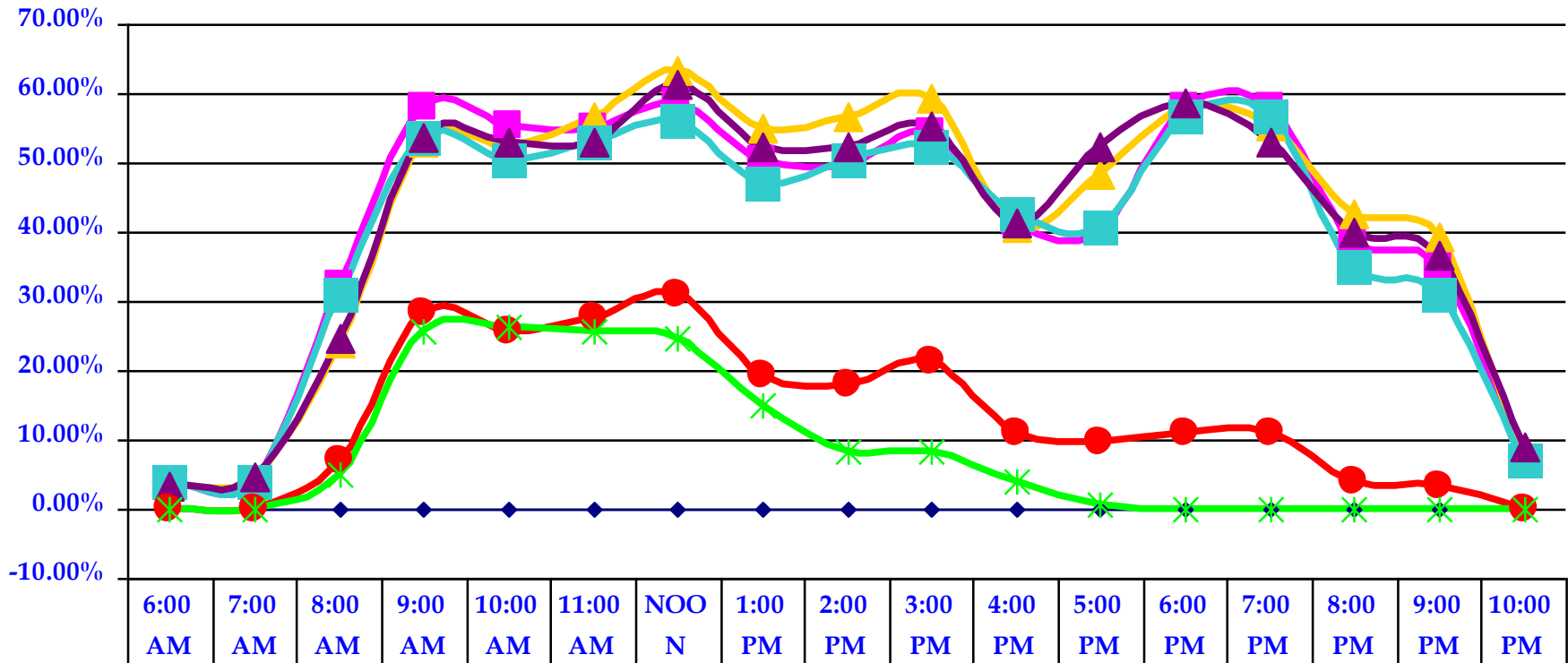
## UCF CLASSROOM UTILIZATION FALL SEMESTER 2003



	6:00 AM	7:00 AM	8:00 AM	9:00 AM	10:00 AM	11:00 AM	NOON	1:00 PM	2:00 PM	3:00 PM	4:00 PM	5:00 PM	6:00 PM	7:00 PM	8:00 PM	9:00 PM	10:00 PM
UCF SUN	0.00%	0.00%	0.00%	0.00%	0.00%	0.00%	0.00%	0.00%	0.00%	0.00%	0.00%	0.00%	0.00%	0.00%	0.00%	0.00%	0.00%
UCF MON	0.00%	45.45%	63.64%	70.63%	75.52%	75.52%	73.43%	79.02%	73.43%	73.43%	74.83%	58.74%	72.03%	71.33%	63.64%	11.89%	8.39%
UCF TUE	0.00%	46.85%	53.85%	72.73%	80.42%	76.92%	76.22%	79.72%	76.92%	72.73%	76.92%	62.94%	79.02%	79.72%	67.83%	11.19%	6.29%
UCF WED	0.00%	44.06%	66.43%	72.73%	79.02%	78.32%	76.22%	79.02%	73.43%	72.03%	73.43%	57.34%	73.43%	73.43%	65.73%	12.59%	6.99%
UCF THU	0.00%	44.06%	52.45%	74.13%	81.12%	77.62%	76.92%	79.72%	76.92%	74.13%	76.22%	61.54%	73.43%	75.52%	62.94%	11.19%	6.29%
UCF FRI	0.00%	41.96%	62.94%	68.53%	73.43%	72.03%	70.63%	69.93%	61.54%	56.64%	44.76%	5.59%	0.70%	0.70%	0.70%	0.00%	0.00%
UCF SAT	0.00%	0.00%	1.40%	6.99%	7.69%	7.69%	3.50%	2.10%	2.10%	2.10%	1.40%	0.00%	0.00%	0.00%	0.00%	0.00%	0.00%

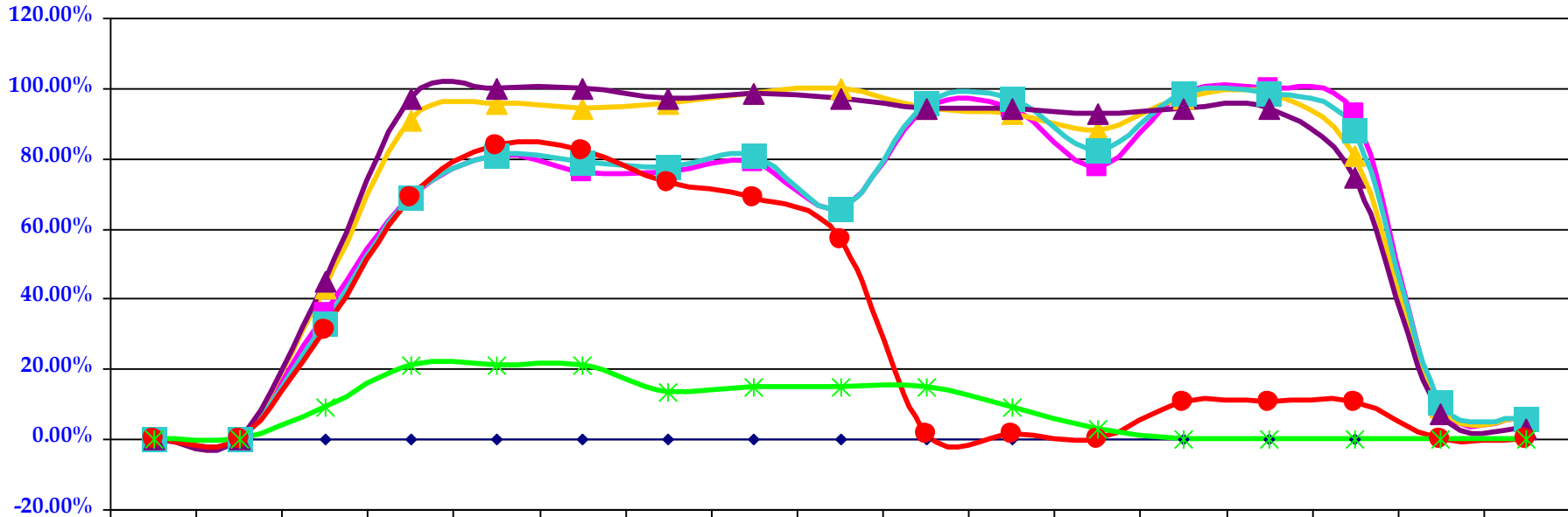


# FIU CLASSROOM UTILIZATION FALL SEMESTER 2003



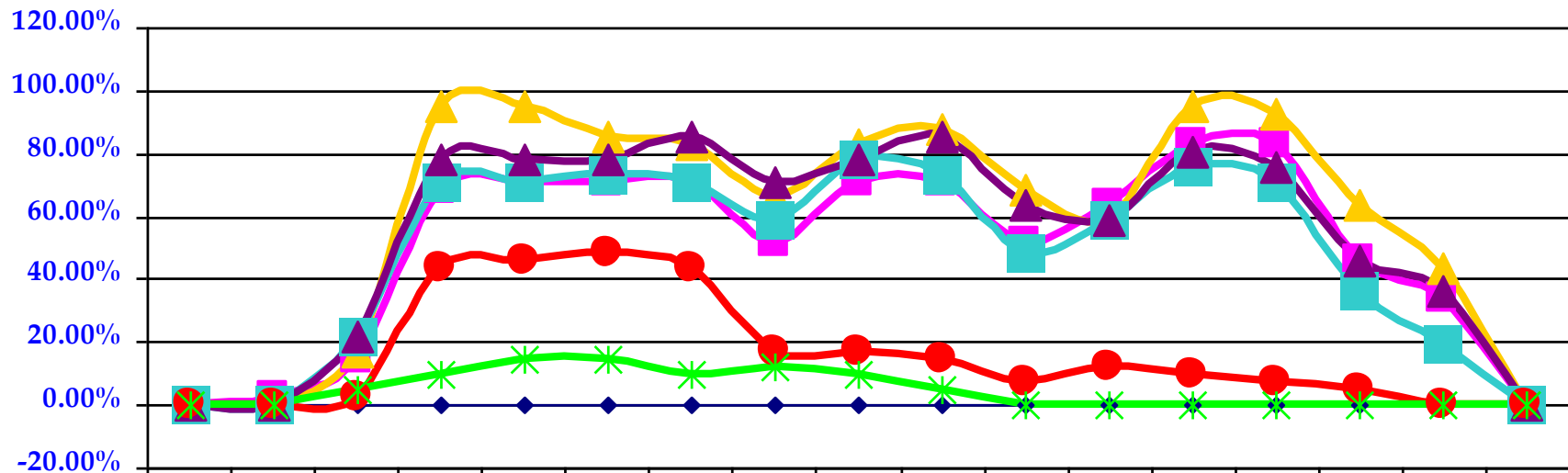
	6:00 AM	7:00 AM	8:00 AM	9:00 AM	10:00 AM	11:00 AM	NOO N	1:00 PM	2:00 PM	3:00 PM	4:00 PM	5:00 PM	6:00 PM	7:00 PM	8:00 PM	9:00 PM	10:00 PM
FIU SUN	0.00%	0.00%	0.00%	0.00%	0.00%	0.00%	0.00%	0.00%	0.00%	0.00%	0.00%	0.00%	0.00%	0.00%	0.00%	0.00%	0.00%
FIU MON	3.87%	3.87%	32.26	58.06	55.48	54.84	58.71	50.32	49.68	54.19	41.29	40.00	58.06	58.06	38.71	34.84	7.10%
FIU TUE	3.23%	4.52%	23.87	52.90	52.26	56.77	63.23	54.84	56.77	59.35	40.65	48.39	58.06	55.48	42.58	39.35	7.10%
FIU WED	3.87%	3.87%	30.97	53.55	50.32	52.90	56.13	47.10	50.32	52.26	42.58	40.65	56.77	56.77	34.84	30.97	7.10%
FIU THU	3.23%	4.52%	24.52	53.55	52.90	52.90	61.29	52.26	52.26	55.48	41.29	52.26	58.71	52.90	40.00	36.77	9.03%
FIU FRI	0.00%	0.00%	7.10%	28.39	25.81	27.74	30.97	19.35	18.06	21.29	10.97	9.68%	10.97	10.97	3.87%	3.23%	0.00%
FIU SAT	0.00%	0.00%	5.16%	25.81	26.45	25.81	24.52	14.84	8.39%	8.39%	3.87%	0.65%	0.00%	0.00%	0.00%	0.00%	0.00%

## UNF CLASSROOM UTILIZATION FALL SEMESTER 2003



	6:00 AM	7:00 AM	8:00 AM	9:00 AM	10:00 AM	11:00 AM	NOON	1:00 PM	2:00 PM	3:00 PM	4:00 PM	5:00 PM	6:00 PM	7:00 PM	8:00 PM	9:00 PM	10:00 PM
UNF SUN	0.00%	0.00%	0.00%	0.00%	0.00%	0.00%	0.00%	0.00%	0.00%	0.00%	0.00%	0.00%	0.00%	0.00%	0.00%	0.00%	0.00%
UNF MON	0.00%	0.00%	35.82%	68.66%	80.60%	76.12%	76.12%	79.10%	65.67%	94.03%	94.03%	77.61%	98.51%	100.00%	92.54%	8.96%	5.97%
UNF TUE	0.00%	0.00%	43.28%	91.04%	95.52%	94.03%	95.52%	98.51%	100.00%	94.03%	92.54%	88.06%	97.01%	98.51%	80.60%	8.96%	5.97%
UNF WED	0.00%	0.00%	32.84%	68.66%	80.60%	79.10%	77.61%	80.60%	65.67%	95.52%	97.01%	82.09%	98.51%	98.51%	88.06%	10.45%	5.97%
UNF THU	0.00%	0.00%	44.78%	97.01%	100.00%	100.00%	97.01%	98.51%	97.01%	94.03%	94.03%	92.54%	94.03%	94.03%	74.63%	7.46%	2.99%
UNF FRI	0.00%	0.00%	31.34%	68.66%	83.58%	82.09%	73.13%	68.66%	56.72%	1.49%	1.49%	0.00%	10.45%	10.45%	10.45%	0.00%	0.00%
UNF SAT	0.00%	0.00%	8.96%	20.90%	20.90%	20.90%	13.43%	14.93%	14.93%	14.93%	8.96%	2.99%	0.00%	0.00%	0.00%	0.00%	0.00%

## FGCU CLASSROOM UTILIZATION FALL SEMESTER 2003



	6:00 AM	7:00 AM	8:00 AM	9:00 AM	10:00 AM	11:00 AM	NOO N	1:00 PM	2:00 PM	3:00 PM	4:00 PM	5:00 PM	6:00 PM	7:00 PM	8:00 PM	9:00 PM	10:00 PM
FGCU SUN	0.00%	0.00%	0.00%	0.00%	0.00%	0.00%	0.00%	0.00%	0.00%	0.00%	0.00%	0.00%	0.00%	0.00%	0.00%	0.00%	0.00%
FGCU MON	0.00%	2.44%	14.63	68.29	70.73	70.73	70.73	51.22	70.73	70.73	51.22	63.41	82.93	82.93	46.34	34.15	0.00%
FGCU TUE	0.00%	0.00%	17.07	95.12	95.12	85.37	82.93	65.85	82.93	87.80	68.29	58.54	95.12	92.68	63.41	43.90	0.00%
FGCU WED	0.00%	0.00%	21.95	70.73	70.73	73.17	70.73	58.54	78.05	73.17	48.78	58.54	75.61	70.73	36.59	19.51	0.00%
FGCU THU	0.00%	0.00%	21.95	78.05	78.05	78.05	85.37	70.73	78.05	85.37	63.41	58.54	80.49	75.61	46.34	36.59	0.00%
FGCU FRI	0.00%	0.00%	2.44%	43.90	46.34	48.78	43.90	17.07	17.07	14.63	7.32%	12.20	9.76%	7.32%	4.88%	0.00%	0.00%
FGCU SAT	0.00%	0.00%	4.88%	9.76%	14.63	14.63	9.76%	12.20	9.76%	4.88%	0.00%	0.00%	0.00%	0.00%	0.00%	0.00%	0.00%