



**ENLACE:** ENGaging LATino Communities for Education



# ***ENLACE FLORIDA***

## **A Statewide Network Supporting Best Practice and Policy Development/Advocacy for Enhancing College Readiness, Access and Success for Hispanic Students**

**Joint Meeting of the Florida Board of Governors' Student Affairs Committee  
and the Governor's Access and Diversity Commission**

**Tallahassee  
March 22, 2006**

**Presented by  
FAU, FIU, UCF, USF**



W. K. Kellogg Foundation's National Initiative

*ENLACE* Phase I and II (2000-2005)

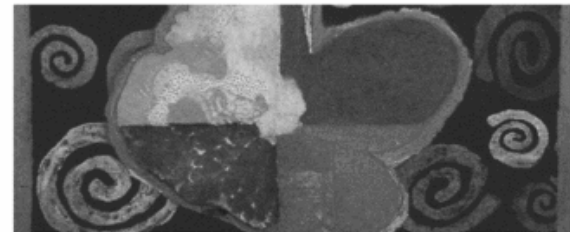
Mission:

*To increase the number of Latino students  
completing high school and attaining four-year  
degrees.*

- Hispanics are this nation's largest ethnic group, and one of the fastest growing population segments,
- The Hispanic population is characterized by a youthful age structure; [and] a large number of foreign-born, including many "undocumented",
- Hispanics are highly diverse,
- "The significance of Hispanics' high school dropout rates, low enrollment rates in 4-year colleges, and the need to master English cannot be overstated because the fastest growing and best-paying jobs now require at least some postsecondary education".

*Multiple Origins, Uncertain Destinies: Hispanics and the American Future*, National Research Council, March 2006.

# Multiple Origins, Uncertain Destinies



## Hispanics and the American Future

Panel on Hispanics in the United States

Marta Tienda and Faith Mitchell, Editors

Committee on Population

Division of Behavioral and Social Sciences and Education

NATIONAL RESEARCH COUNCIL  
OF THE NATIONAL ACADEMIES

THE NATIONAL ACADEMIES PRESS  
Washington, D.C.  
[www.nap.edu](http://www.nap.edu)





## Kellogg's Keys to Success

- Create Seamless Pathways to College
- Strengthen Family and Student Support
- Enhance Educational Institutions' Capacity

## Via Seamless Pre-K-20/Community Partnerships

Students  
PreK-12 Schools  
Community Colleges

Families  
Community  
Universities



**PHASE I:** 18 planning grants awarded (1 year), 2000.

**PHASE II:** 13 of 18 sites funded (4 years), 2001.

In Arizona, California, Florida, Illinois, New Mexico, New York, and Texas

The Kellogg Foundation has already invested \$3+ m in *ENLACE* programs at FIU and USF.

**PHASE III:** California and New Mexico are currently funded (3 years), 2005.

The W. K. Kellogg Foundation has invited Florida to submit a statewide *ENLACE* proposal – with a focus on expanding the scope of implementation and public policy development/advocacy...

- Statewide funding proposal to be submitted next month.





# **Phase II**

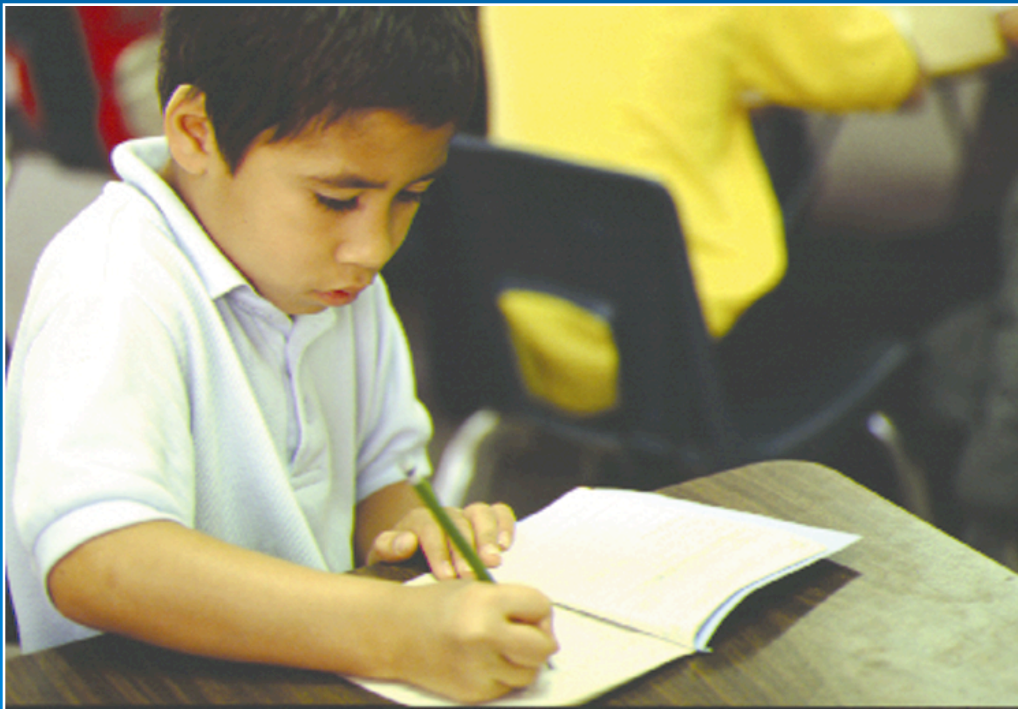
## **Implementation at FIU and USF**

**4 years (2001-2005)**

**Program Development and Service Delivery**  
**Evaluation, Modification, Sustainability**

# Strengthening the PreK-16 Pathway

## Elementary to Middle School



### *ENLACE Miami*

In Miami, elementary schools that are part of a cluster serving a concentrated Latino student population offer special training to parents so that they can be stronger advocates, while students receive special attention in science, math, and reading. It is sustained through public and private sources.



# Strengthening the PreK-16 Pathway

## Middle School to High School



### **ENLACE Tampa Bay**

*Hispanic Hometown Heroes, Nursing Professionals of the Future & the Museum of Science and Industry's Meet the Scientist Day* give middle school students positive exposure to role models and college/career opportunities. It is sustained through funding from USF and MOSI.

# Strengthening the PreK-16 Pathway

## High School to College



### *ENLACE Tampa Bay*

To increase academic success, USF students mentor and tutor high school students for 10 weeks each semester. *ENLACE Day* brings 9<sup>th</sup>-10<sup>th</sup> and 11<sup>th</sup>-12<sup>th</sup> graders to the USF campus for a visit. Students are helped with studies and demystifying college access. Federal work-study funded mentors ensure cost-effectiveness.



# Strengthening the PreK-16 Pathway

## Community College Transfer



### *ENLACE Tampa Bay*

A Lumina Foundation grant awarded to USF and Hillsborough Community College facilitates student transition from high school to HCC, and from HCC to USF through targeted counseling, advising, mentoring, linkages to key offices, and other assistance. Program will be sustained by HCC.

# Strengthening the PreK-16 Pathway

## University Success



### *ENLACE Tampa Bay*

*El Centro* was designed in response to Hispanic student input. It is a place where any student can find culturally-sensitive counseling, help in demystifying bureaucratic processes and information about internships, financial aid, scholarships, GRE-prep, etc. The office also coordinates the DAR TUTOR-MENTOR program. It is sustained by USF.



# *ENLACE Miami and ENLACE Tampa Bay*

## *- Key Accomplishments -*

- Strong PreK-20/community partnerships forged, reaffirmed and sustained through MOUs,
- Positive impact on participating students and families,
- Increased institutional and community awareness of needs,
- Sustainability of core programs and best practices, and
- Invitation to apply for Phase III funding.

# Phase III - *ENLACE FLORIDA*



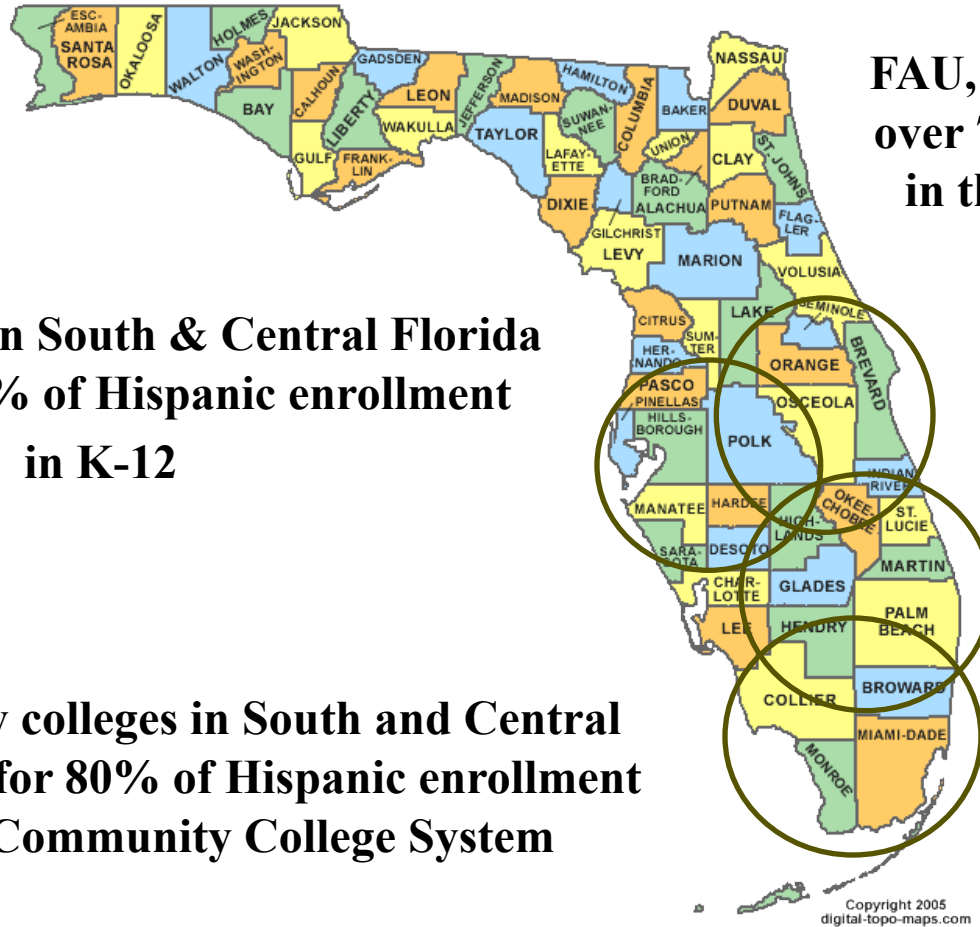
# MISSION & GOALS



- To build a statewide network of universities, community colleges, school districts, community organizations, students, and parents (regional clusters) to enhance state educational initiatives that positively impact Hispanics and other demographic groups that are underrepresented in Florida higher education.
- To extend the scope of *ENLACE* statewide through implementing best practices developed, and proven by *ENLACE Miami*, *ENLACE Tampa Bay*, and other *ENLACE* programs nationwide.
- To effect meaningful and sustainable policy change and development to overcome barriers and enhance college readiness, access, and success for Hispanics and other students in the State of Florida.



# THE *ENLACE FLORIDA* NETWORK



**FAU, FIU, USF, UCF, account for  
over 75% of Hispanic enrollment  
in the State University System**

**School districts in South & Central Florida  
account for 90% of Hispanic enrollment  
in K-12**

**Five community colleges in South and Central  
Florida account for 80% of Hispanic enrollment  
in the State Community College System**

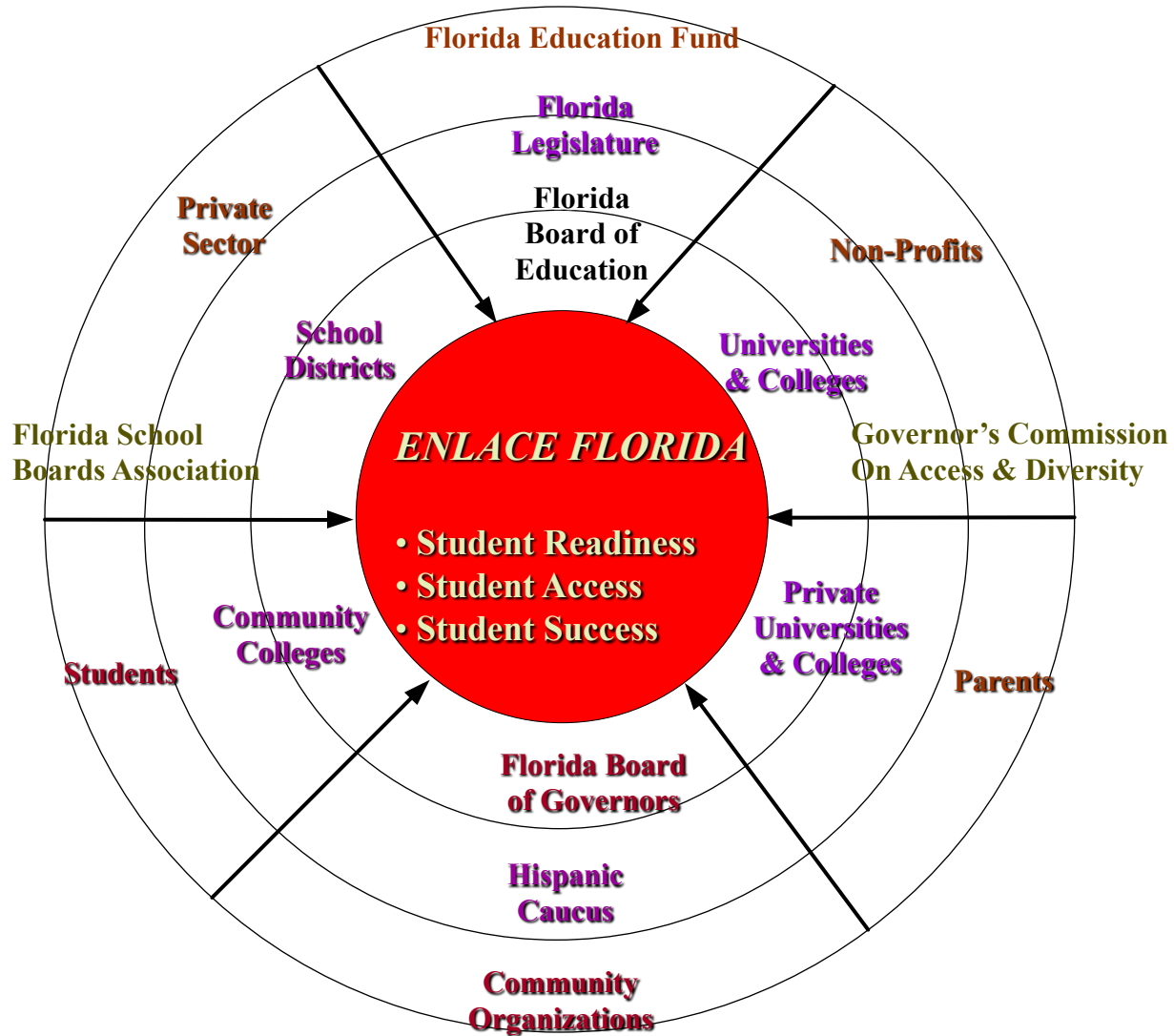
# CORE VALUES



- **Democracy**
- **Inclusiveness**
- **Respect**
- **Dialogue driven**
- **Accountability: measurable outcomes and benchmarking, cost effective, sustainable, replicable**
- **Action oriented: focused on students & families**
- **Unity: strength through collaboration**

# *ENLACE FLORIDA*

## An Interdependent Network





# **OBJECTIVE: To create a sustainable ENLACE FLORIDA network**



OUTCOMES	STRATEGIES	POTENTIAL PARTNERS	MEASURES OF SUCCESS
<ul style="list-style-type: none"> <li>▪ Pre K-20 collaboration</li> <li>▪ ENLACE FLORIDA</li> </ul>	<ol style="list-style-type: none"> <li>1. Strengthen existing regional clusters</li> <li>2. Build new regional clusters</li> <li>3. Disseminate data</li> <li>4. Regional workshops</li> <li>5. State forum</li> <li>6. Testimony</li> <li>7. Policy analysis</li> <li>8. Participate in the national ENLACE effort</li> <li>9. Plan to sustain funding</li> </ol>	<ul style="list-style-type: none"> <li>▪ Chamber of Commerce</li> <li>▪ School Board</li> <li>▪ LULAC</li> <li>▪ ASPIRA</li> <li>▪ FL Education Fund</li> <li>▪ FBOE K-20 Office of Equity and Access</li> <li>▪ Student groups</li> <li>▪ Parent Groups</li> <li>▪ Private Corporations</li> <li>▪ NCCEP</li> </ul>	<ol style="list-style-type: none"> <li>1. MOUs in clusters</li> <li>2. Support from partner organizations</li> <li>3. Participant evaluations</li> <li>4. Data and testimony</li> <li>5. Reports and policy briefs</li> <li>6. Public and private funding</li> </ol>

# **OBJECTIVE: Improve College Readiness of Hispanic Students**



OUTCOMES	STRATEGIES	POTENTIAL PARTNERS	MEASURES OF SUCCESS
<p><b>Increased number of college-ready Hispanic high school graduates</b></p>	<ol style="list-style-type: none"> <li>1. Benchmark data</li> <li>2. Best Practices</li> <li>3. School counselors</li> <li>4. CROP, AP, Dual Enrollment, and Honors courses</li> <li>5. GEAR-UP programs</li> <li>6. State programs, such as Edificando Mejores Lectores en Familia</li> <li>7. Hispanic family involvement in K-12</li> </ol>	<ul style="list-style-type: none"> <li>• FBOE K-20 Office of Equity and Access</li> <li>• Access &amp; Diversity Commission</li> <li>• Bureau of Family &amp; Community Outreach</li> <li>• NCCEP</li> <li>• College Board</li> <li>• Student groups</li> <li>• Parent groups</li> <li>• School Board</li> <li>• LULAC</li> <li>• ASPIRA</li> <li>• Media</li> </ul>	<ol style="list-style-type: none"> <li>1. Hispanics in college prep curriculum, Dual Enrollment, AP, &amp; Honors</li> <li>2. Hispanics in CROP</li> <li>3. GEAR-UP grants</li> <li>4. Hispanic graduation rates</li> <li>5. Hispanic test scores</li> <li>6. Hispanic family participation, 21<sup>st</sup> Century Learning Centers, Families Building Better Readers, &amp; <i>ENLACE</i> conferences</li> </ol>

# **OBJECTIVE: Improve Hispanic College Access**



OUTCOMES	STRATEGIES	POTENTIAL PARTNERS	MEASURES OF SUCCESS
<b>1. Increased Hispanic enrollment in community colleges &amp; universities</b> <b>2. Increased # of Hispanic students applying for &amp; receiving financial aid</b>	<b>1. Benchmark data on Hispanic application and acceptance rates</b> <b>2. Disseminate <i>Best Practices</i></b> <b>3. Increase student and family involvement in outreach programs</b> <b>4. Governor's Access and Diversity initiative</b> <b>5. Legislation for undocumented students</b> <b>6. Support FLA Education Fund/Hispanic Recruitment bill</b>	<ul style="list-style-type: none"><li>• K-20 Equity &amp; Access</li><li>• Access &amp; Diversity Commission</li><li>• Florida Immigrant Advocacy Center</li><li>• Florida Interstate Migrant Program</li><li>• Sallie Mae Fund</li><li>• FL Education Fund</li><li>• Hispanic Scholarship Fund</li><li>• Students &amp; Parents</li><li>• Fla. Chamber</li><li>• Non-profits</li><li>• Corporations</li><li>• Media</li></ul>	<b>1. Hispanics enrolled in community colleges and universities</b> <b>2. Hispanics receiving financial aid &amp; scholarships</b> <b>3. Hispanic families participating in college outreach programs</b> <b>4. In-state tuition for undocumented students</b> <b>5. Budget Access &amp; Diversity Initiative</b>

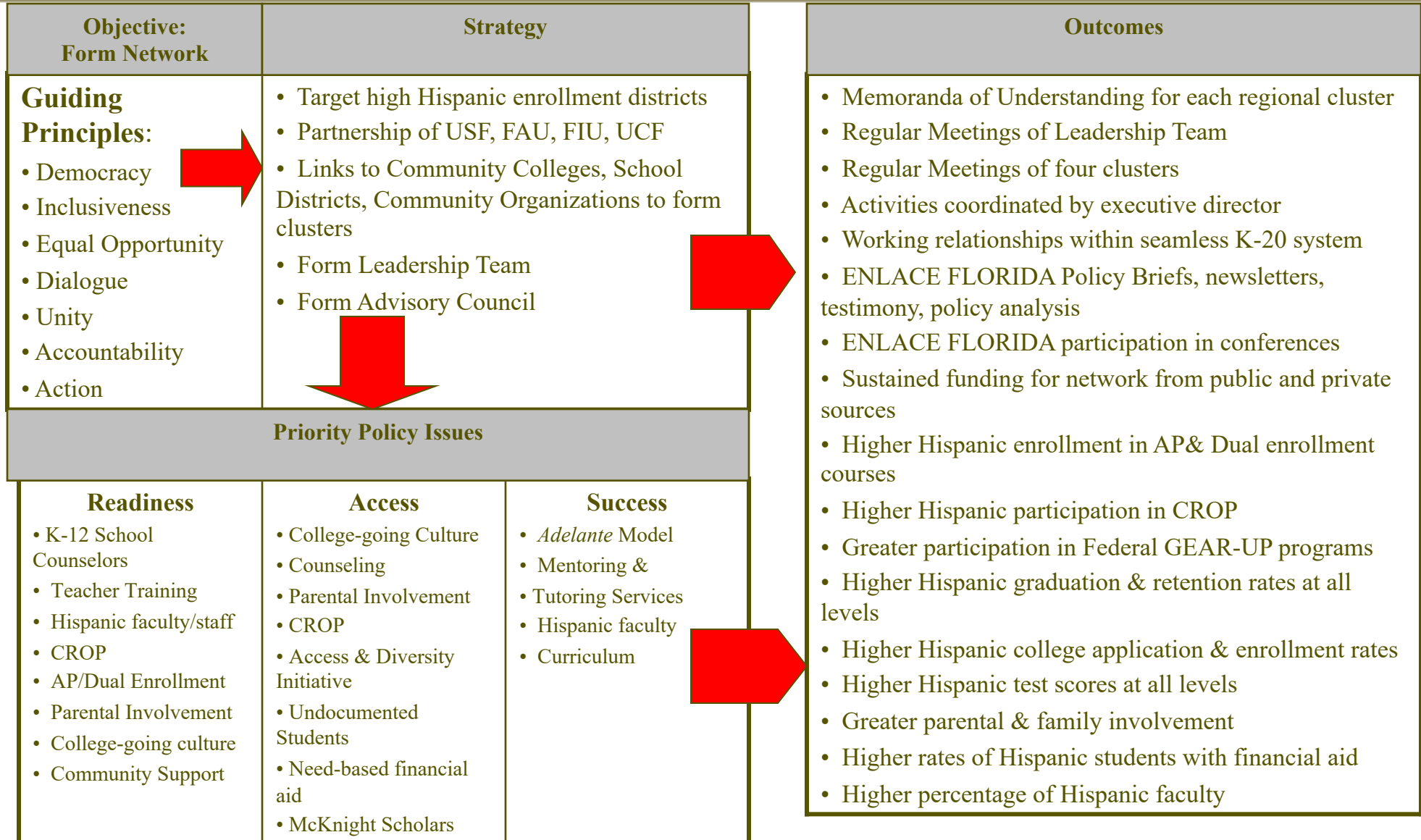


# **OBJECTIVE: Improve Hispanic College Success**



<b>TARGETED OUTCOMES</b>	<b>STRATEGIES</b>	<b>POTENTIAL PARTNERS</b>	<b>MEASURES OF SUCCESS</b>
<b>1. Increased Hispanic 4-year degree completion rates</b>	<b>1. Benchmark data 2. Disseminate best practices based on Lumina <i>Adelante</i> model 3. Disseminate best practices based on ENLACE USF model to facilitate student retention 4. Mentoring &amp; tutoring, based on ENLACE II models 5. Hispanic faculty and administrators 6. Curricula</b>	<b>• Florida Chamber Foundation • Student groups • Local business groups • LULAC • ASPIRA</b>	<b>1. 2-year to 4-year Hispanic student transfers 2. Hispanic completing 4-year degree 3. Hispanic retention rates 4. Number of Hispanic faculty and administrators in SUS system</b>

# ENLACE FLORIDA POLICY DEVELOPMENT AND SUSTAINABILITY



# ***ENLACE FLORIDA***

## **Priority Policy Issues**



- **Legislation to enable undocumented students to attend state colleges or universities at in-state tuition rates (HB 119; SB 366)**
- **Legislation to enable undocumented students to qualify for proposed First Generation in College scholarships (HB 795; SB 1750)**
- **Promoting and Funding Governor's Access & Diversity Initiative**
- **Increase in CROP funding**
- **Florida Education Fund/Hispanic Recruitment bill**



# ENLACE FLORIDA: A SUMMARY



- ***ENLACE FLORIDA* programs focus on student readiness, access, and success,**
- **Programs leverage existing resources,**
- **Programs extract best practices and seeks to replicate them statewide to enhance performance of under-represented student groups,**
- **Strength rests on collaborative partnerships in regional clusters,**
- **Seed funding from W. K. Kellogg Foundation (to build four regional clusters and effect policy change) sustained by public and private sources,**
- **Plans to embrace all SUS institutions and sustain regional clusters, and**
- **Establishes empirical benchmarks and embraces accountability.**



