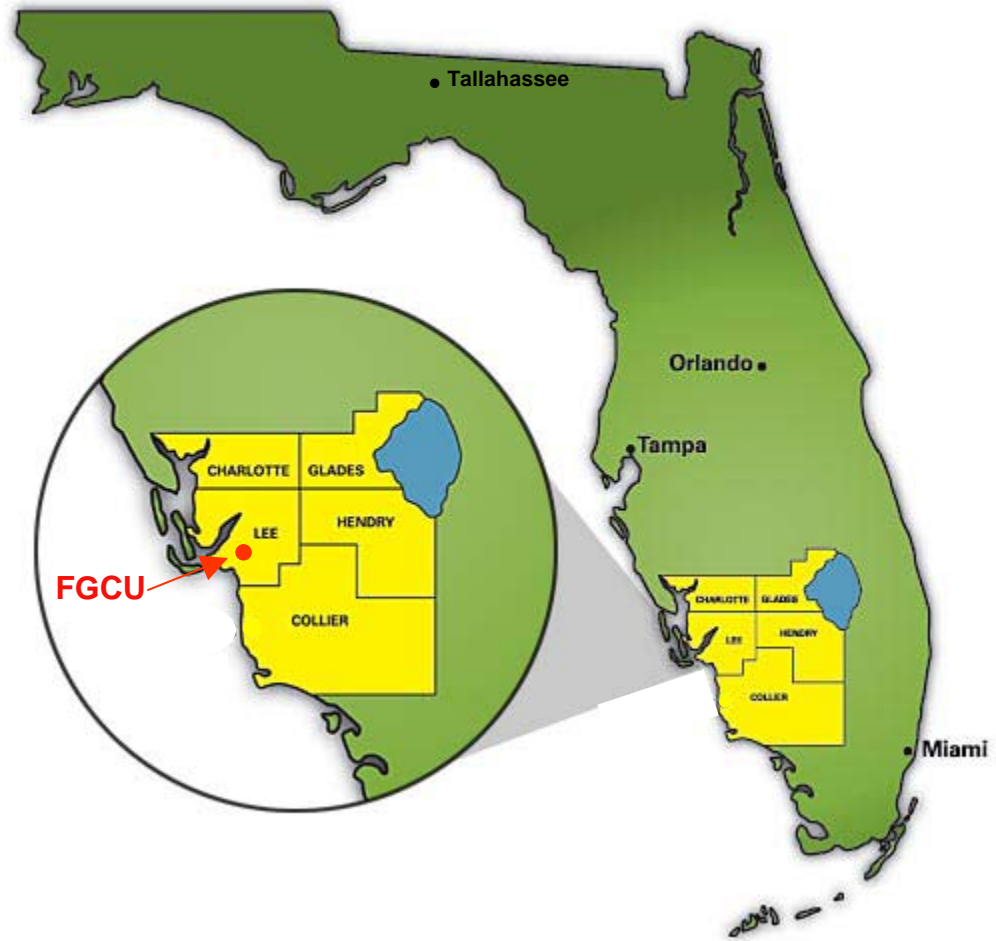
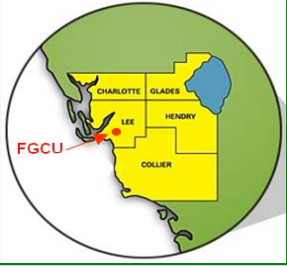


# Florida Gulf Coast University

*Strategic Planning to Meet Future Demands in Southwest Florida*





# A New University for the 21<sup>st</sup> Century

Interdisciplinary approach to undergraduate education.

Use of instructional technology and distance learning

Required civic engagement for students

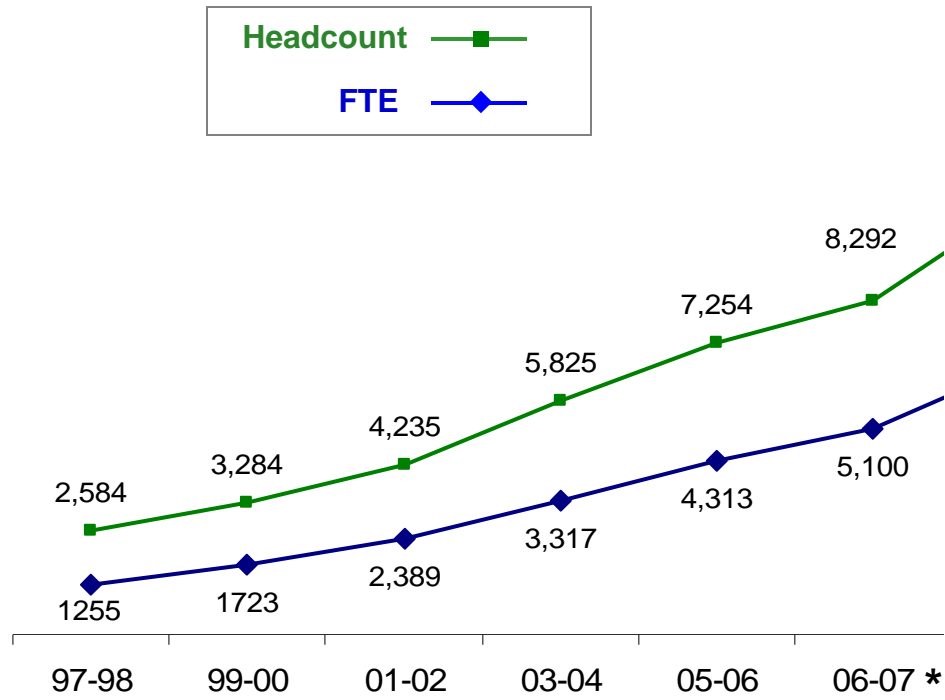


Multi-year contracts for faculty as an alternative to tenure

Ecological sustainability

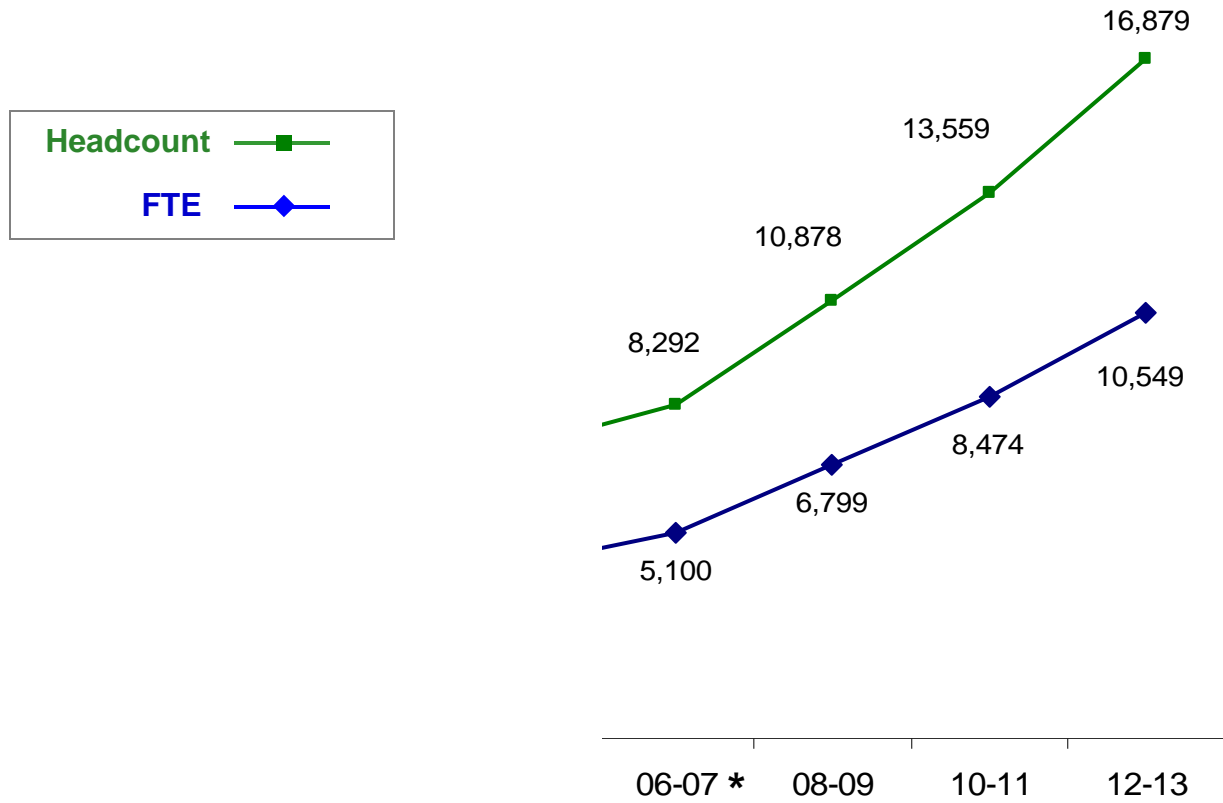
FGCU has grown from 2,584 to 8,292 students, from 398 faculty and staff to 1,181, from 8 to 59 buildings, and from 26 to 64 degree programs in less than 10 yrs.

# Enrollment Growth 1997-2006



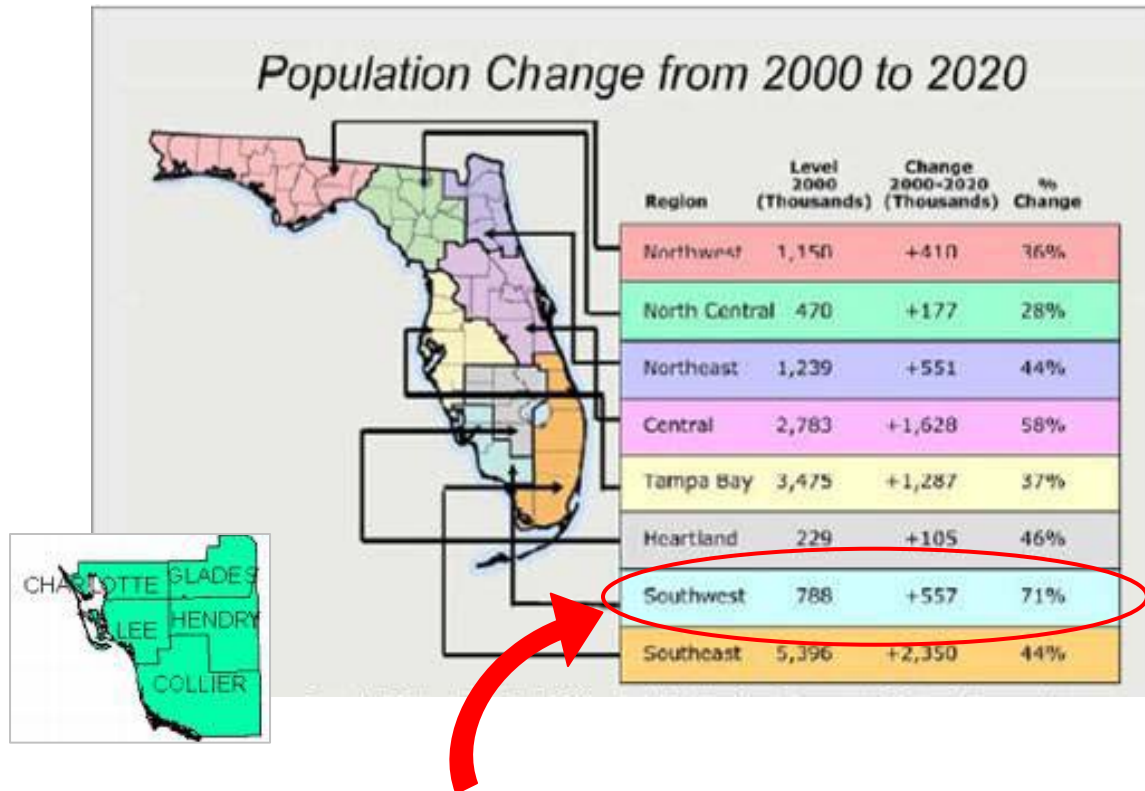
\* Current Estimate

# Enrollment Growth Projections



\* Current Estimate

# Southwest Florida Growth Projections



- Southwest Florida is growing at a faster rate than the rest of the state

Source: Enterprise Florida, Florida's Strategic Plan for Economic Development, Florida Office of Economic & Demographic Research 2000 Forecast, and US Census Bureau 2000 Forecast



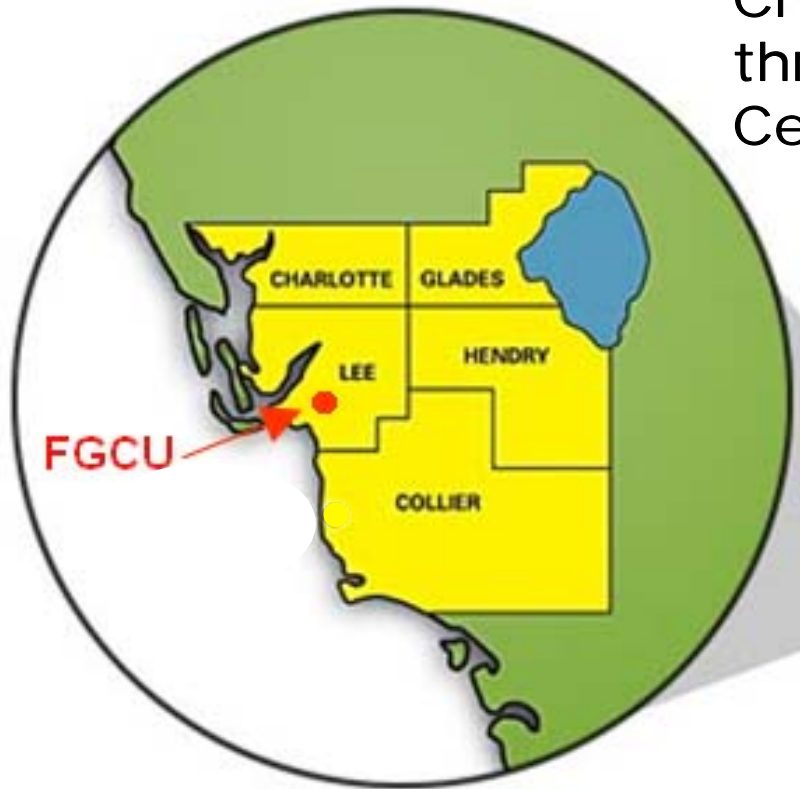
## Campus and Facilities Growth

- Building space available on FGCU campus: 3.6 million square feet
- Already built: 1.2 million square feet
- Estimated date campus will be built out: 2016 - 2017
- Estimated enrollment at "built-out" date: 20,000 – 25,000 students

# FGCU Dual Strategies to Address Future Regional Demand

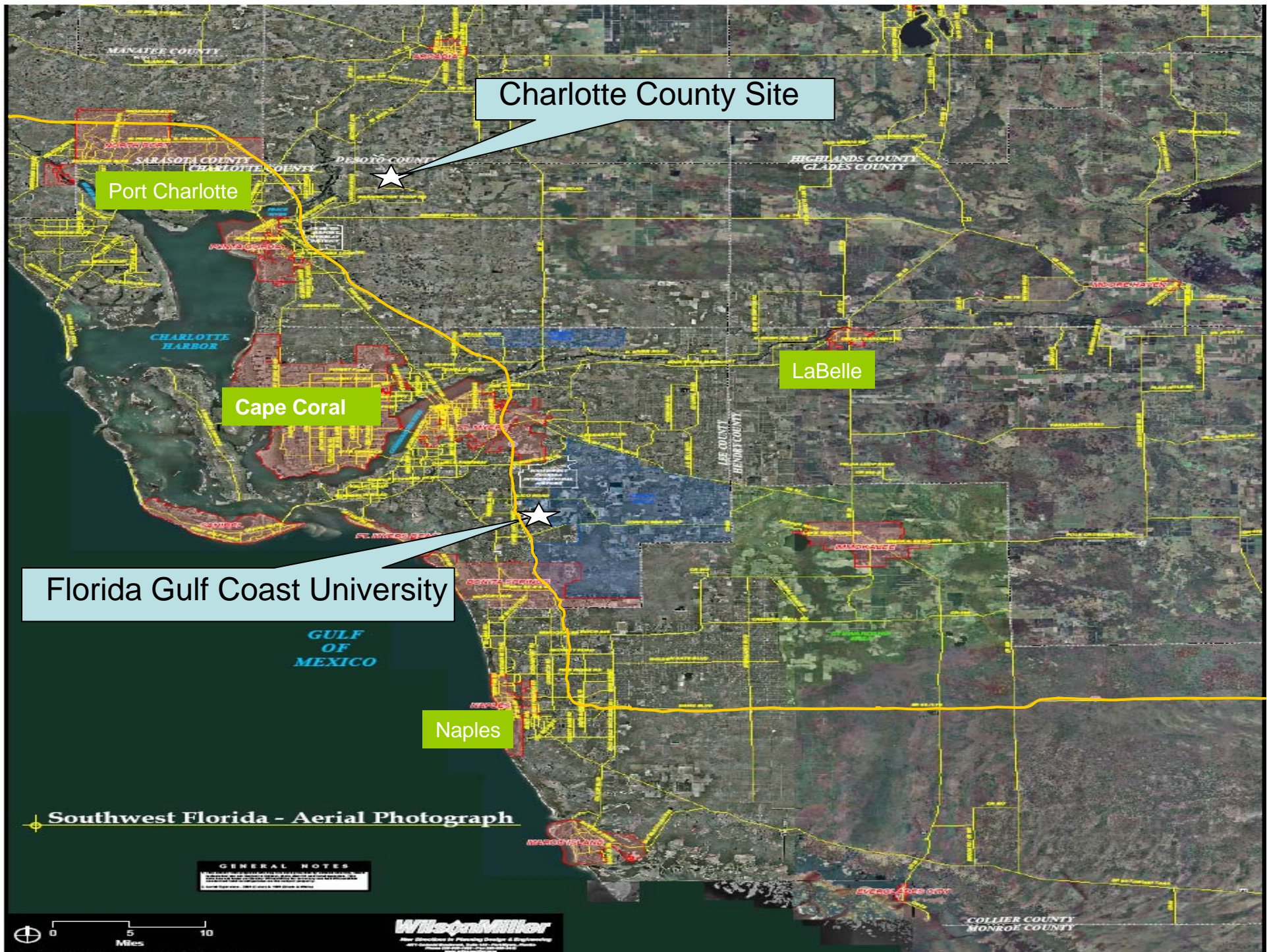
- On Campus:
  - Taller buildings and more dense campus
  - Replacing surface parking with parking garages
  - Increased Distance Learning offerings
- Off Campus:
  - Acquisition of sites for future growth to develop satellite centers in high growth/demand locales

## Challenges to be Addressed through Regional Satellite Centers



- \* Diminishing availability of land
- \* Soaring land and construction costs
- \* High fuel prices for commuting students
- \* Inadequate transportation infrastructure





Charlotte County Site

Port Charlotte

Cape Coral

LaBelle

Florida Gulf Coast University

Naples

Southwest Florida - Aerial Photograph

GENERAL NOTES

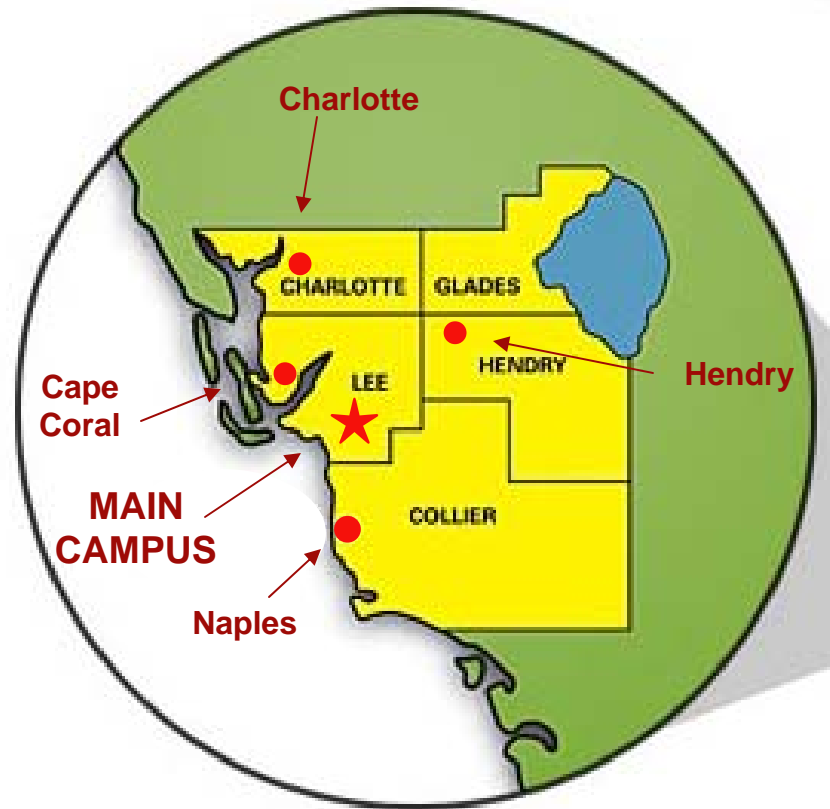


Wilson Miller

COLLIER COUNTY  
MONROE COUNTY

## FGCU Satellite Centers: Planned Locations in SW Florida

Each location is  
45 minutes to 1 hour  
driving time from the  
FGCU main campus





**Proposed University Village**  
2458 Acres

# Hudson Sun-River Proposal

**Potential Value to FGCU, Region, State and SUS:**

**\$ 70 million**

**Some key elements:**

**150 acres of buildable land**

**\$5 million for first building**

**\$750,000 per year**

**Construction of initial buildings, facilities and other infrastructure**