



# SUS Graduates Continue Their Education

## Class of 2015

30%

16,272 graduates pursued more education within one year after completing a bachelor's degree\*

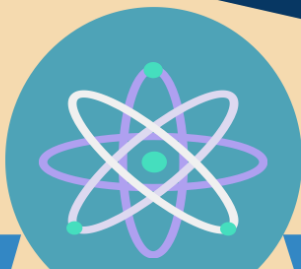
\*Includes graduates who worked at the same time



### By Field of Study

Fields with the highest percent of graduates pursuing additional education one year after graduation

1



Physical  
Sciences

53%

2



Biological  
Sciences

53%

3



Public  
Administration

49%

graduates enrolled in further education  
one year after graduation\*

Agriculture	246	49%
Architecture	72	40%
Biological Sciences	2,082	53%
Business & Marketing	2,072	21%
Communication & Journalism	433	15%
Computer & Information Sciences	196	15%
Cultural Studies	45	41%
Education	646	22%
Engineering	697	21%
Engineering Technician	14	10%
English & Literature	435	27%
Family & Consumer Sciences	169	39%
Health Professions	2,220	34%
History	181	32%
Interdisciplinary Studies	260	26%
Languages & Linguistics	188	40%
Legal Studies	155	44%
Liberal Arts & Sciences	175	26%
Mathematics & Statistics	147	40%
Natural Resources	110	27%
Philosophy & Religious Studies	100	41%
Physical Sciences	307	53%
Psychology	1,900	42%
Public Administration	516	49%
Recreation & Fitness Studies	345	39%
Security & Protective Services	675	30%
Social Sciences	1,606	33%
Visual & Performing Arts	280	18%

\*Percent is of the total number of graduates in the study with degrees in that field

State University System of Florida  
Board of Governors  
325 W. Gaines Street  
Tallahassee, Florida 32399  
850.245.0466



Full Report:  
[flbog.edu/forstudents/gfs/](http://flbog.edu/forstudents/gfs/)



FAU



FIU

FLORIDA  
POLYTECHNIC  
UNIVERSITY



UCF

UF



USF  
UNIVERSITY OF  
SOUTH FLORIDA

UWF